

**AECOM**

2540 Kensington Road NW, Calgary, AB, Canada T2N 3S3  
T 403.270.9200 F 403.270.0399 www.aecom.com

January 21, 2009

Project Number: 0171-142-01-08

John Craig  
Assistant Land Administrator  
Indian and Northern Affairs Canada  
Land Administration  
P.O. Box 100, Bldg. 918  
Iqaluit, NU X0A 0H0

Dear John:

**Re: Quarry Permit Returns for 2008QP0017-0028 in Association with LUP #N2008X0003, and New Quarry Permit Application**

AECOM is submitting the following information regarding the above-noted quarry permits issued for the clean up of the former DYE-M, Cape Dyer Island DEW Line site. The information is being submitted on behalf of Defence Construction Canada and the Department of National Defence.

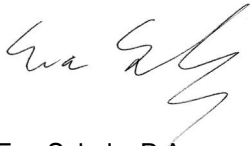
A summary of the quantity of granular materials extracted in 2008 is presented in the following table.

Borrow Area	Quantity Extracted in 2008 (m <sup>3</sup> )
1 (2008QP0017)	38,500
2 (2008QP0018)	19,100
3 (2008QP0019)	69,400
4 (2008QP0020)	6,200
6 (2008QP0021)	0
7 (2008QP0022)	0
9 (2008QP0023)	0
10 (2008QP0024)	0
11 (2008QP0025)	4,600
12 (2008QP0026)	0
13 (2008QP0027)	20,400
14 (2008QP0028)	0
<b>Total</b>	<b>158,200</b>

An application for work in the 2009 season is attached, as the current permits expire on March 27, 2009.

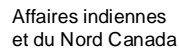
We trust the information provided is sufficient for you to process the application. Please feel free to contact the undersigned if you have any questions or comments.

Sincerely,  
**AECOM Canada Ltd.**

A handwritten signature in black ink, appearing to read 'Eva Schulz', with a stylized flourish at the end.

Eva Schulz, P.Ag.  
[Eva.Schulz@aecom.com](mailto:Eva.Schulz@aecom.com)

Encl. Quarry Permit Application  
cc: Douglas Craig, DCC





I enclose the required fees as indicated below:

QUARRY PERMIT FEE .....	\$150.00	TOTAL \$	<u>N/A</u>
ROYALTIES ON SAND, GRAVEL LOAM			
Per cubic metre: .....	\$1.50	TOTAL \$	<u>N/A</u>
ROYALTIES ON OTHER BUILDING MATERIALS			
Per cubic metre: .....	\$1.25	TOTAL \$	<u>N/A</u>
TOTAL FEES:		\$	<u>N/A</u>

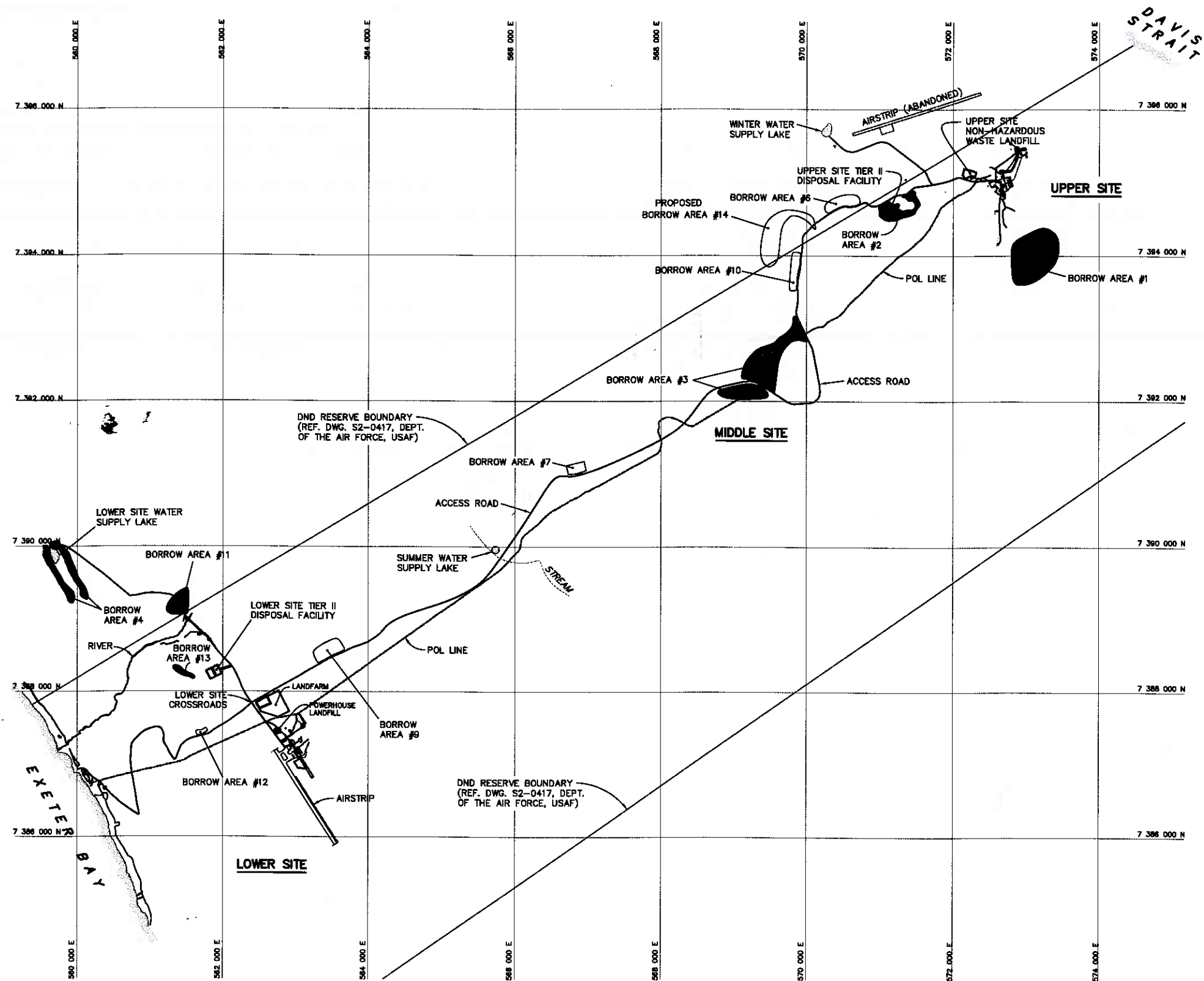
DATE: January 21 2009  
SIGNATURE OF APPLICANT: \_\_\_\_\_

  
For Douglas Craig

**Estimated Quantities of Granular Material Required at DYE-M, Cape Dyer**


Borrow Area	Quantity (cubic metres)
1	162,000
2	35,000
3	155,000
4	84,000
6	31,000
7	21,000
8	81,000
10	34,000
11	25,000
13	33,000
14	63,000
<b>Total</b>	<b>724,000</b>

C:\Estimation\Drafting\DIVISIONS\1010\Projects\10995027\008\ACAD\10995027008\_FIG 1.dwg [Figure 1] December 03, 2008 - 4:45pm Helbert



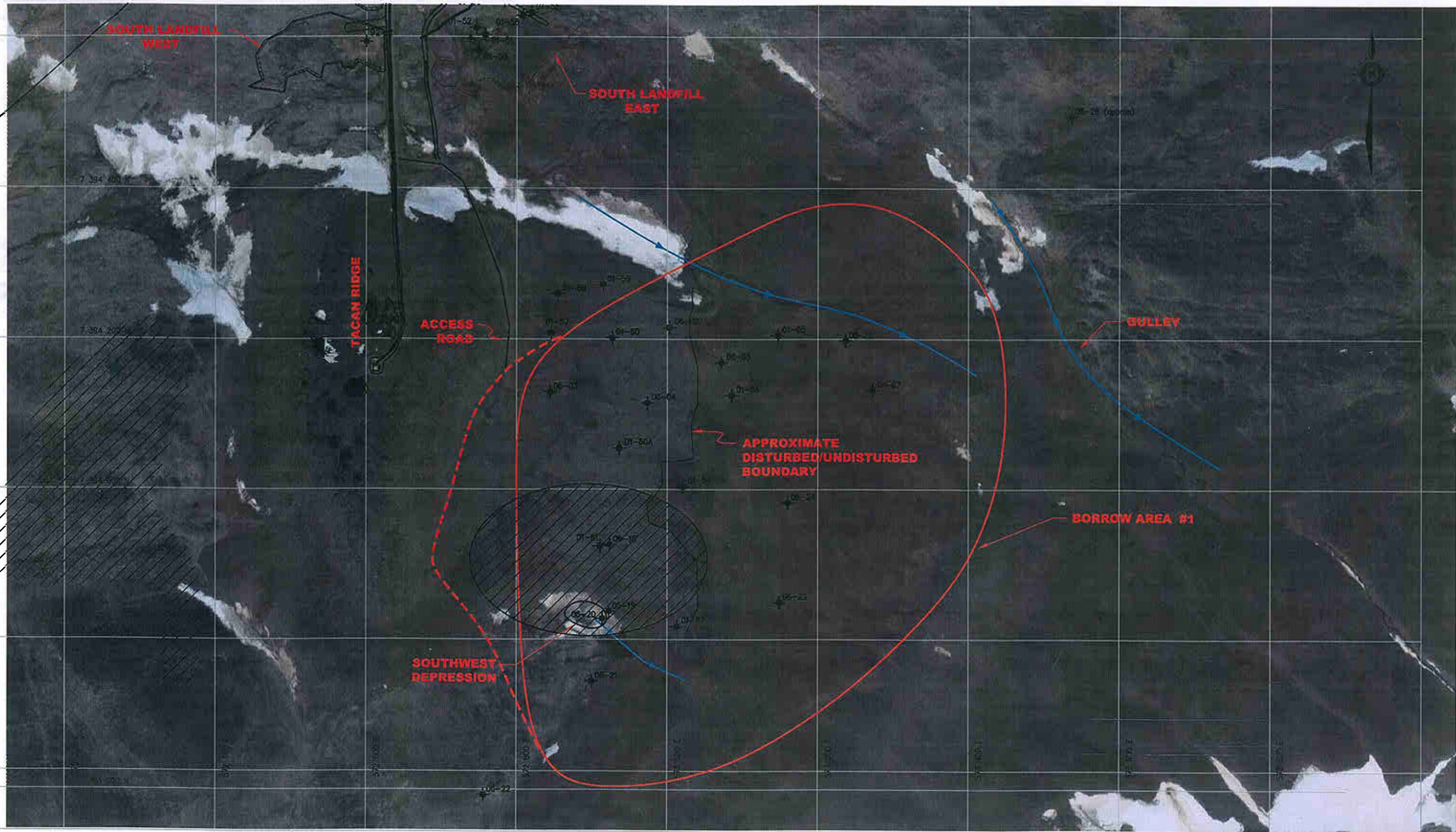
LEGEND:  
● - WORKED BORROW AREAS

NOTE: DRAWING NOT TO SCALE

CLIENT		DYE-M DEW Line Clean Up Project Cape Dyer, Nunavut			
AECOM		General Site Plan and 2008 Borrow Development			
EBA Engineering Consultants Ltd. 	PROJECT NO./FILE NO. 10995027.008	OWN DBD	CRD WTH	REV 1	FIGURE 1
		OFFICE EBA-EDM	DATE November 2008		



Q:\Environ\Drilling\DIVISIONS\0101\IP\projects\10995027\008\10995027008\_FIG 2-3.dwg [Figure 2] December 03, 2008 - 4:46pm thebert



NOTE: BACKGROUND IMAGERY PROVIDED COURTESY OF GOOGLE EARTH AND IS FOR VISUAL REPRESENTATION ONLY

LEGEND:

- DRAINAGE
- SPECIFIED BORROW LIMITS
- POTENTIAL BORROW EXPANSION/DEVELOPMENT

0 250  
Scale: 1: 5000 (metres)

- APPROXIMATE 2008 BORROW DEVELOPMENT AREA
- PREVIOUS TESTPIT (EXCAVATION YEAR DENOTED BY FIRST TWO DIGITS OF TESTPIT ID)

CLIENT

AECOM

DYE-M DEW Line Clean Up Project  
Cape Dyer, Nunavut

Borrow Area #1  
Borrow Plan

EBA Engineering  
Consultants Ltd.



PROJECT NO./FILE NO. 10995027.008	DWR DBD	CKD WTH	REV 1
OFFICE EBA-EDM	DATE November 2008		

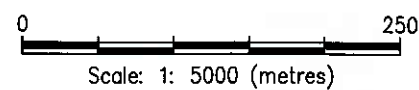
Figure 2






NOTE: BACKGROUND IMAGERY PROVIDED COURTESY OF GOOGLE EARTH AND IS FOR VISUAL REPRESENTATION ONLY

- LEGEND:**
- DRAINAGE
  - SPECIFIED BORROW LIMITS
  - POTENTIAL BORROW EXPANSION/DEVELOPMENT

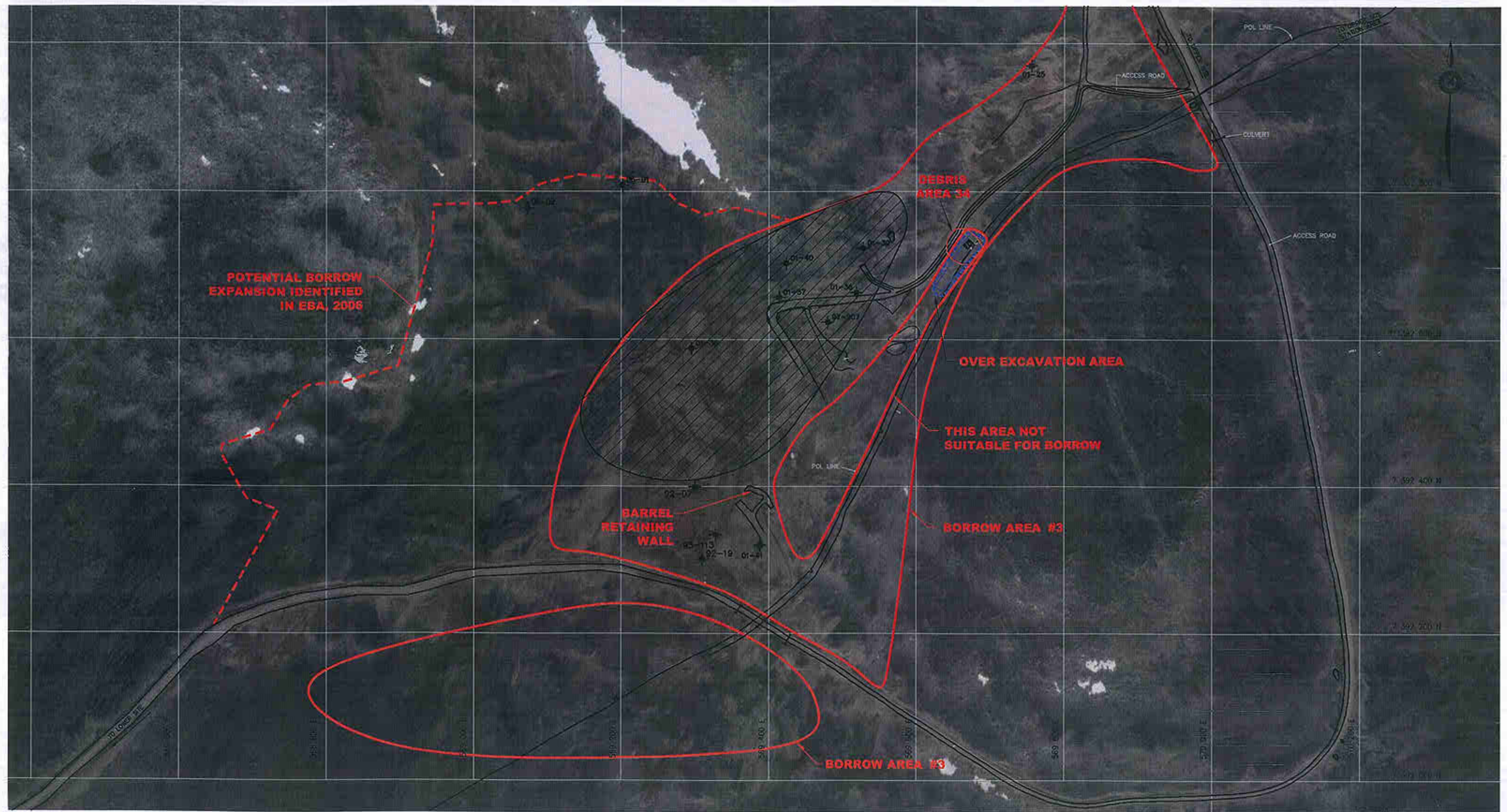


- RESTRICTED DEVELOPMENT
- APPROXIMATE 2008 BORROW DEVELOPMENT AREA
- PREVIOUS TESTPIT (EXCAVATION YEAR DENOTED BY FIRST TWO DIGITS OF TESTPIT ID)
- GROUND TEMPERATURE LOCATION

CLIENT	DYE-M DEW Line Clean Up Project Cape Dyer, Nunavut				Figure 3
	Borrow Area #2 Borrow Plan				
AECOM	PROJECT NO./REV. NO. 10995027.008	DWN DBD	CKD WTH	REV 1	
EBA Engineering Consultants Ltd. 	OFFICE EBA-EDM	DATE December, 2007			



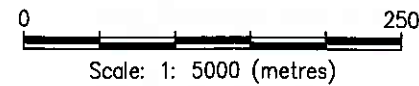
C:\Edmonton\Drainage\DIVISIONS\010\Projects\10995\10995-027\008A\CAD\10995-027\008A-FIG 4.dwg [Figure 4] December 04, 2008 - 7:27am Hubert



NOTE: BACKGROUND IMAGERY PROVIDED COURTESY OF GOOGLE EARTH AND IS FOR VISUAL REPRESENTATION ONLY

- LEGEND:
- DRAINAGE
  - SPECIFIED BORROW LIMITS
  - POTENTIAL BORROW EXPANSION/DEVELOPMENT

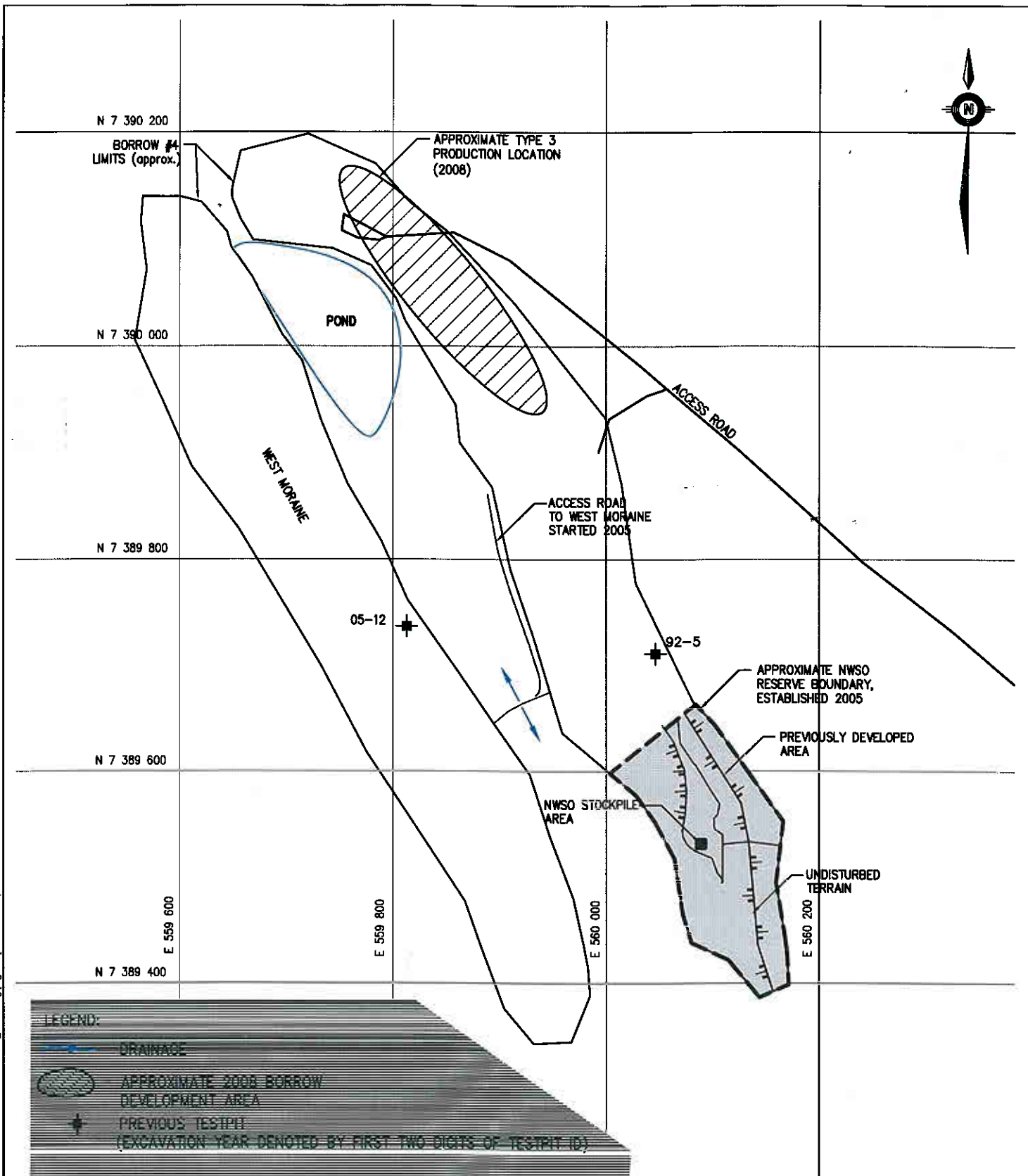
- APPROXIMATE 2008 BORROW DEVELOPMENT AREA
- PREVIOUS TESTPIT (EXCAVATION YEAR DENOTED BY FIRST TWO DIGITS OF TESTPIT ID)



CLIENT		DYE-M DEW Line Clean Up Project Cape Dyer, Nunavut			
AECOM		Borrow Area #3 Borrow Plan			
EBA Engineering Consultants Ltd.		PROJECT NO./FILE NO. 10995027.008	DWG DBD	CRD WTH	REV 1
		OFFICE EBA-EDM	DATE November 2008	Figure 4	



C:\Edmonton\Drilling\DIVISION\ONS0101\Projects\10995\10995-02\7008\ACAD\10995027008\_FIG 5.dwg [Figure 5] December 04, 2008 - 7:29am rhobert



0 250  
Scale: 1: 5 000 (metres)

CLIENT

AECOM

**EBA Engineering  
Consultants Ltd.**



**DYE-M DEW Line Clean Up Project  
Cape Dyer, Nunavut**

**Borrow Area #4  
Borrow Plan**

PROJECT NO./FILE NO.  
10995027.008

OFFICE  
EBA-EDM

DWN  
DBD

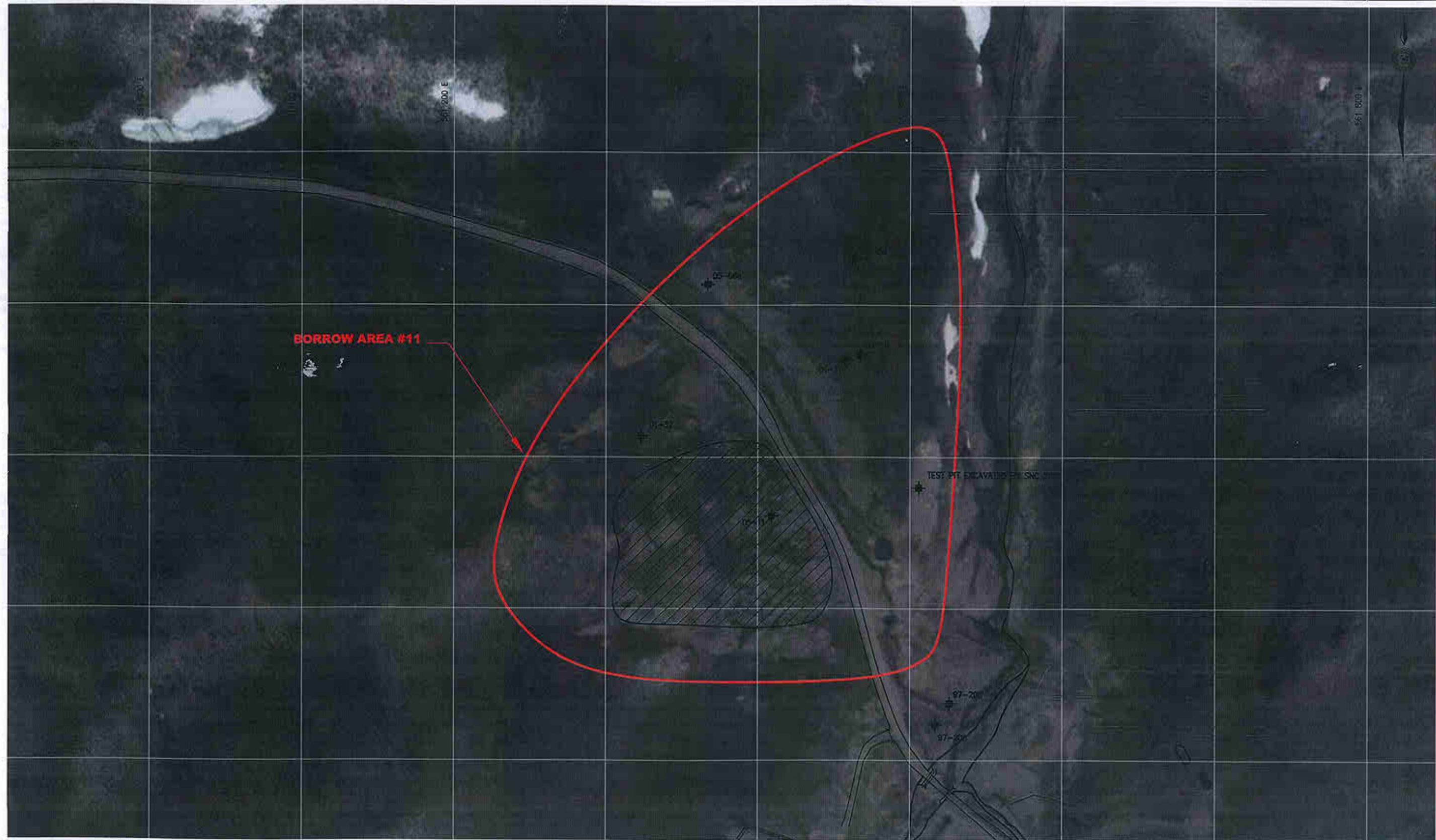
CKD  
WTH

REV  
0

DATE  
November 2008

**Figure 5**

C:\Edmonton\Drafting\DIVISIONS\0101\Projects\10995\10995.027\008\A\CAD\10995027008\_FIG 6.dwg [Figure 6] December 04, 2008 - 7:30am rhobart



NOTE: BACKGROUND IMAGERY PROVIDED COURTESY OF GOOGLE EARTH AND IS FOR VISUAL REPRESENTATION ONLY

LEGEND:

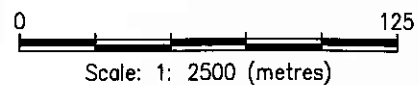
- DRAINAGE
- DEFINED BORROW LIMITS



- APPROXIMATE 2008 BORROW DEVELOPMENT AREA



- PREVIOUS TESTPIT  
(EXCAVATION YEAR DENOTED BY FIRST TWO DIGITS OF TESTPIT ID)



CLIENT

AECOM

EBA Engineering  
Consultants Ltd.



DYE-M DEW Line Clean Up Project  
Cape Dyer, Nunavut

Borrow Area #11  
Borrow Plan

PROJECT NO./FILE NO. 10995027.008	DW# DBD	CKD WTH	REV 1
OFFICE EBA-EDM	DATE November 2008		

Figure 6





NOTE: BACKGROUND IMAGERY PROVIDED COURTESY OF GOOGLE  
MAPS AND IS FOR VISUAL REPRESENTATION ONLY.  
BASE DRAWING PROVIDED BY UMA, DYE-M CAPE DYER TENDER DRAWINGS, DATED DECEMBER 2003

LEGEND:

-  - MONITORING WELL LOCATION
-  - GROUND TEMPERATURE LOCATION
-  - APPROXIMATE 2008 BORROW DEVELOPMENT AREA

0 100  
Scale: 1: 2 500 (metres)

CLIENT

AECOM

EBA Engineering  
Consultants Ltd.



DYE-M DEW Line Clean Up Project  
Cape Dyer, Nunavut

Borrow Area #13 and Lower Site Tier II DF  
Borrow Plan and GTC Locations

PROJECT NO. 10995027.008	DWN RH	CKD RK	REV 0
OFFICE EBA	DATE November 2008		

Figure 7