

FORUM URANIUM CORPORATION
WILDLIFE MITIGATION MEASURES
JANUARY 2008

INTRODUCTION

Forum Uranium Corp. (Forum) is a Vancouver-based energy company committed to the exploration and development of uranium resources within Canada. Forum's activity has previously been focused on Saskatchewan's Athabasca Basin. The geological similarity between the Athabasca and Thelon Basins has prompted Forum, and Joint Venture Partner Superior Diamonds Inc. (Superior) to develop and apply to undertake an exploration program for uranium on almost 100,000 hectares in the Schultz Lake area west of Baker Lake, Nunavut.

Applications have been submitted to the Nunavut Water Board (water licence), Indian and Northern Affairs Canada (land use permit) and the Kivalliq Inuit Association (land use licence). This project has already undergone a conformity screening with the Nunavut Planning Commission and is now being screened by the Nunavut Impact Review Board.

All employees and contractors of Forum will be trained in Forum's internal policies, procedures and made familiar with the Terms and Conditions of the project's licences and permits. Training will include, but not be limited to:

- Spill response
- Bear safety
- Safety
- Environmental policies
- Wildlife mitigation measures

Regional wildlife biologists, community members of Baker Lake, the Government of Nunavut, INAC and the Beverly and Qamanirjuaq Caribou Management Board (BQCMB) have identified areas in proximity of the Thelon as being important for wildlife, especially caribou as well as for historical/archaeological sites. This area supports a variety of wildlife. Forum Uranium recognizes the significance of this area and is committed to working closely with all interested stakeholders to ensure the continued protection of this important natural resource. The following describes the efforts that Forum Uranium will undergo to provide best management practices toward the protection and mitigations against disturbances to wildlife and sensitive areas.

INTERNAL POLICIES

Approaching and feeding wildlife is prohibited. There are absolutely no exceptions to this rule. If wildlife are present in the area, Forum employees and contractors are to avoid any contact with wildlife. These policies/regulations will be strictly enforced. Any employee or contractor who is found to be violating any of these rules will find their employment terminated and removed from site immediately.

Harassment and disturbance of wildlife is prohibited. If Forum employees and contractors are approaching a work site and wildlife are in the area, this work site will be avoided until the animals have moved on a distance of 1km from the site. If den sites or nests are discovered during exploration activities, these locations will be recorded and avoided until they are no longer in use. The locations are to be provided to the KIA and the regional biologist. Nests and/or eggs are not to be moved or disturbed.

Wildlife are not to be pursued for any reason. Any harassment of wildlife (including pursuing wildlife for photo opportunities) will result in immediate termination and removal from site.

Hunting of wildlife is prohibited. While conducting business on behalf of Forum, hunting is strictly forbidden. There are no exceptions to this rule.

Low-level aircraft and helicopter flights will be kept to a minimum. Low-level aircraft and helicopter flights will make efforts to avoid areas which are crucial migration, nesting and denning habitats. In the event of bad weather or an emergency when low-level flights are required, these instances will be recorded and reported to the KIA.

Airborne Geophysical Surveys - Prior to conducting any low-level airborne geophysical surveys the Kivalliq Inuit Association and the Baker Lake HTO's will be contacted and the following information will be provided; dates of surveys, location of surveys, how long the surveys will take to complete. Locally hired wildlife monitors will be required to conduct a survey of the area to ensure that there are no wildlife present and will monitor for wildlife during the survey from a high vantage point. If caribou and/or muskox are seen in the area, the geophysical survey will not be flown until they have moved a safe distance (at least 5 km) from the area to be surveyed. The KIA caribou monitors and the HTO will be invited to provide to monitor during low-level airborne geophysical programs to provide additional monitoring and support. At least two weeks notice will be provided prior to any airborne geophysical surveys.

Drilling will cease when wildlife are present. Wildlife monitors will monitor for wildlife from the highest vantage point during the drill program. When wildlife are seen approaching the area of the drill, the wildlife monitors will notify the camp and the drill crew and alert them to the potential need to shut down. When wildlife are within 1 km of the drill, the drill crew will shut down the drill and go on "quiet" standby. The wildlife monitors will notify the drill crew once the wildlife have moved a safe distance from the

work area and are definitely continuing to move away from the activity area (at least 1 km). Only then will drilling resume.

Helicopter flights will respect the recommended elevation. The helicopter will fly at a minimum of the recommended 300m elevation above ground level (or higher) whenever caribou are encountered during the course of a flight. The helicopter will not take off or land if there is wildlife present. A visual scan of the area will be conducted prior to any take offs and landings.

Camp will go on “quiet” when wildlife is present. If caribou, muskox and/or bears are present and within 1 km of the camp, the camp will go on “quiet” (no helicopter, no snowmachines and no ATV’s) until the camp area is clear.

Caribou Protection Measures are to be strictly followed. Special caribou protection measures are required for areas of Nunavut so as to avoid disturbance of migrating and calving herds. These are found in the DIAND Caribou Protection Measures. These measures include timing restrictions and safe distances for activities.

Bear Safety Training will be provided. Forum employees and contractors will receive Bear Safety Training. Bear safety information and material will be kept in a binder on site. All human-bear interactions are to be reported immediately to the KIA, the Government of Nunavut Department of Environment, Environment Canada, HTO’s and the Government of Nunavut Wildlife Biologist.

Sightings of wildlife will be recorded. Sightings of wildlife will be recorded by all Forum employees and contractors on the wildlife sightings sheets provided by Forum (approved by the KIA). This information will be reported in monthly reports to the Kivalliq Inuit Association and the regional biologist and will also be reported in the annual reports provided to various regulatory agencies. A copy of these wildlife sighting sheets is found in the Appendix.

Waste will be managed properly. Proper food storage and handling of cooking wastes will prevent problems with attracting wildlife. Nuisance wildlife will be reported immediately. All wastes will be removed from work areas immediately.

Firearms will only be carried for safety reasons. Firearms may be carried for safety reasons, but only if such firearms are properly registered and stored in accordance with applicable legislation. All firearm discharges must be reported to the Project Manager.

Archaeological sites will be recorded and are not to be disturbed. If any archaeological sites are discovered they are not to be disturbed, the GPS coordinates will be recorded and reported to the Government of Nunavut and the Kivalliq Inuit Association immediately.

Communication and cooperation are critical toward successfully mitigating against wildlife concerns. Forum Uranium will continue to work closely with the KIA caribou monitors in 2008. Forum fully supports this program and will continue to provide assistance to the KIA to guarantee the continued success of the caribou monitoring

initiative. Forum will also work with the Government of Nunavut Wildlife Biologists by providing the 2008 Work Plan and discussing additional mitigation measures which the company can implement. Forum will be traveling to the communities in the very near future (February 2008) to discuss the upcoming field program. While in the communities, Forum will meet with the HTO's to discuss wildlife concerns and the mitigation measures proposed within this plan. Forum will continue to communicate openly with the HTO's, the KIA and the GN Wildlife Biologists throughout the year. An annual report will be provided with a section on the wildlife monitoring and mitigation measures.

Overland Transport. Every effort will be made to ensure that overland transport of fuel and supplies is done prior to the arrival of any caribou.

Overland transport will be completed prior to any snow melt.

MITIGATION MEASURES

CARIBOU

A one (1) km buffer will be used as a measure of a safe distance for working in areas where caribou are present. If caribou come within 1km of any work site, work activities will cease until the caribou have moved safely beyond (1km) of the area.

Helicopter flights will maintain a 300m altitude whenever possible. Absolutely no landings will be allowed in areas where caribou are present. Helicopter and aircraft pilots will be instructed that they are not to fly over the caribou calving grounds on their way to or from the project area.

Crossings – Between May 15 and September 1, no fuel cache will be established, and no blasting is to occur within 10km of a “designated caribou crossing”. As well, no drilling is to be conducted within 5km. Absolutely no activities will act as a block or in any way cause a diversion to migration of caribou.

Airborne Geophysical Surveys – Prior to conducting any low-level airborne geophysical surveys the Kivalliq Inuit Association will be contacted and the following information will be provided; dates of surveys, location of surveys, how long the surveys will take to complete. As well, the locally hired wildlife monitors will be required to conduct a survey of the area to ensure that there are no wildlife present and will monitor for wildlife during the survey. If caribou and/or muskox are seen in the area, the geophysical survey will not be flown until they have moved a safe distance (at least 1 km) from the area to be surveyed.

Forum has contacted the Beverly and Qamanirjuaq Caribou Management Board to discuss this project and the potential impacts to caribou in the area.

BEARS AND OTHER CARNIVORES

Known dens will be avoided. Any new dens discovered will be reported to the regional wildlife biologist and the KIA and avoided.

If bears are present in the area, work will cease until the bears have moved safely out of the area.

All human-bear interactions will be reported immediately.

APPENDIX I
CARIBOU PROTECTION MEASURES

DIAND Caribou Protection Measures

1. (a) The Permittee shall not, without approval, conduct any activity between May 15 and July 15 within the Caribou Protection Areas depicted on the map certified by the Engineer as the “Caribou Protection Map” and annexed to this Land Use Permit.
- (b) A Permittee may, upon approval by the Land Use Inspector, operate within the said Caribou Protection Areas beyond the May 15 deadline set out in 1(a), provided that, when monitoring information indicates that caribou cows are approaching the area of operation, the Permittee will implement 1(c).
- (c) On cessation of activities pursuant to 1(a) or 1(b), the Permittee will remove from the zone all personnel who are not required for the maintenance and protection of the camp facilities and equipment, unless otherwise directed by the Land Use Inspector.
- (d) The Permittee may commence or resume activities prior to July 15 within those parts of the Caribou Protection Areas released by the Land Use Inspector for the reason that caribou cows are not expected to use those parts for calving or post-calving (note 1).
2. (a) In the event that caribou cows calve outside of the Caribou Protection Areas, the Permittee shall suspend operations within the area(s) occupied by cows and/or calves between May 15 and July 15.
- (b) In the event that caribou cows and calves are present, the permittee shall suspend:
 - (i) blasting;
 - (ii) overflights by aircraft at any altitude of less than 300 meters above ground level; and
 - (iii) the use of snowmobiles and ATVs (all-terrain vehicles) outside the immediate vicinity of the camp.

NOTE

1. The Land Use Inspector’s decision will be based on the existing caribou information.
2. Concentrations of caribou should be avoided by low-level aircraft at all times.

3. (a) During migration of caribou, the Permittee shall not locate any operation so as to block or cause substantial diversion to migration.
 - (b) The Permittee shall cease activities that may interfere with migration, such as airborne geophysics surveys or movement of equipment, until the migrating caribou have passed.
4. (a) The Permittee shall not, between May 15 and September 1, construct any camp, cache any fuel, or conduct any blasting within 10 kilometres of any “Designated Crossing” as outlined on the map certified by the Engineer as the “Caribou Protection Map” and annexed to this Land Use Permit.
 - (b) The Permittee shall not, between May 15 and September 1, conduct any diamond drilling operation within 5 kilometres of any “Designated Crossing” as outlined on the map certified by the Engineer as the “Caribou Protection Map” and annexed to this Land Use Permit.

KIA Sample Land Use Permit Caribou and Muskox Protection Conditions

35. The Permittee is given permission to conduct the approved land use operations between May 15 and July 15, provided that when caribou and muskox cows are approaching the area of operation, the Permittee shall cease blasting, overflights by aircraft at any altitude less than 300 meters above ground level, and the use of snowmobiles and ATVs (all-terrain vehicles) outside the immediate vicinity of the camp. Other activities shall also be suspended if caribou approach the immediate vicinity of the specific operation and the monitoring work (described in another clause) indicates that there is stress on the animals.
36. During the presence of caribou and muskox within sight and sound of a camp, all personnel will remain quietly in camp.
37. The Permittee may resume activities prior to July 15 if the caribou and muskox cows have ceased to use the area for calving and post-calving.
39. The Permittee shall not locate any operation so as to block or cause substantial diversion to migration of caribou.

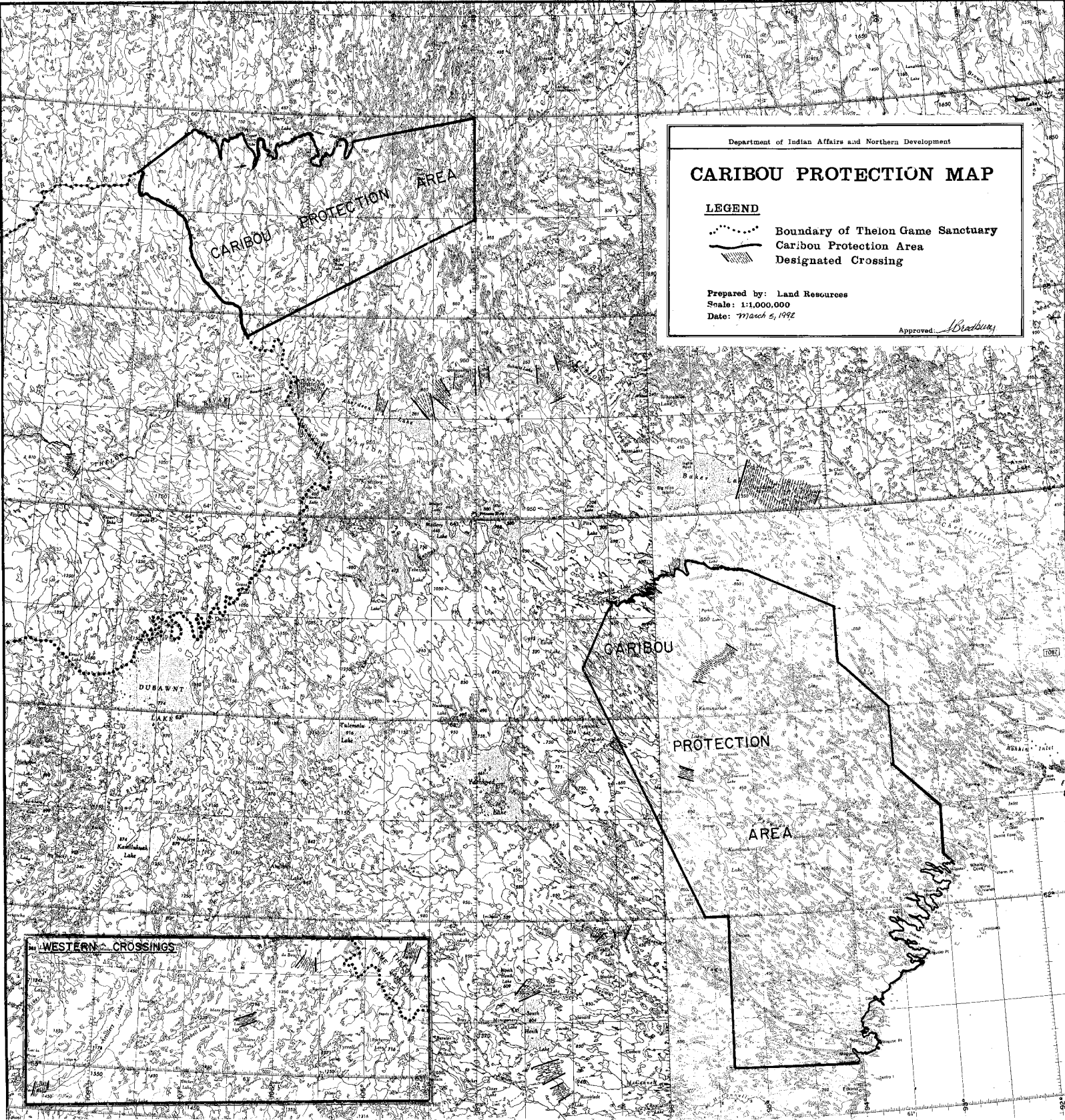
40. The Permittee shall cease activities that may interfere with migration or calving, such as airborne geophysics surveys or movement of equipment, until the migrating caribou have passed.

41. The Permittee shall not conduct any operation within 5 km of any “Designated Crossing” as outlined on the map annexed to this Land Use Permit.

From KIA Land Use Permit BHP 197C141

APPENDIX II

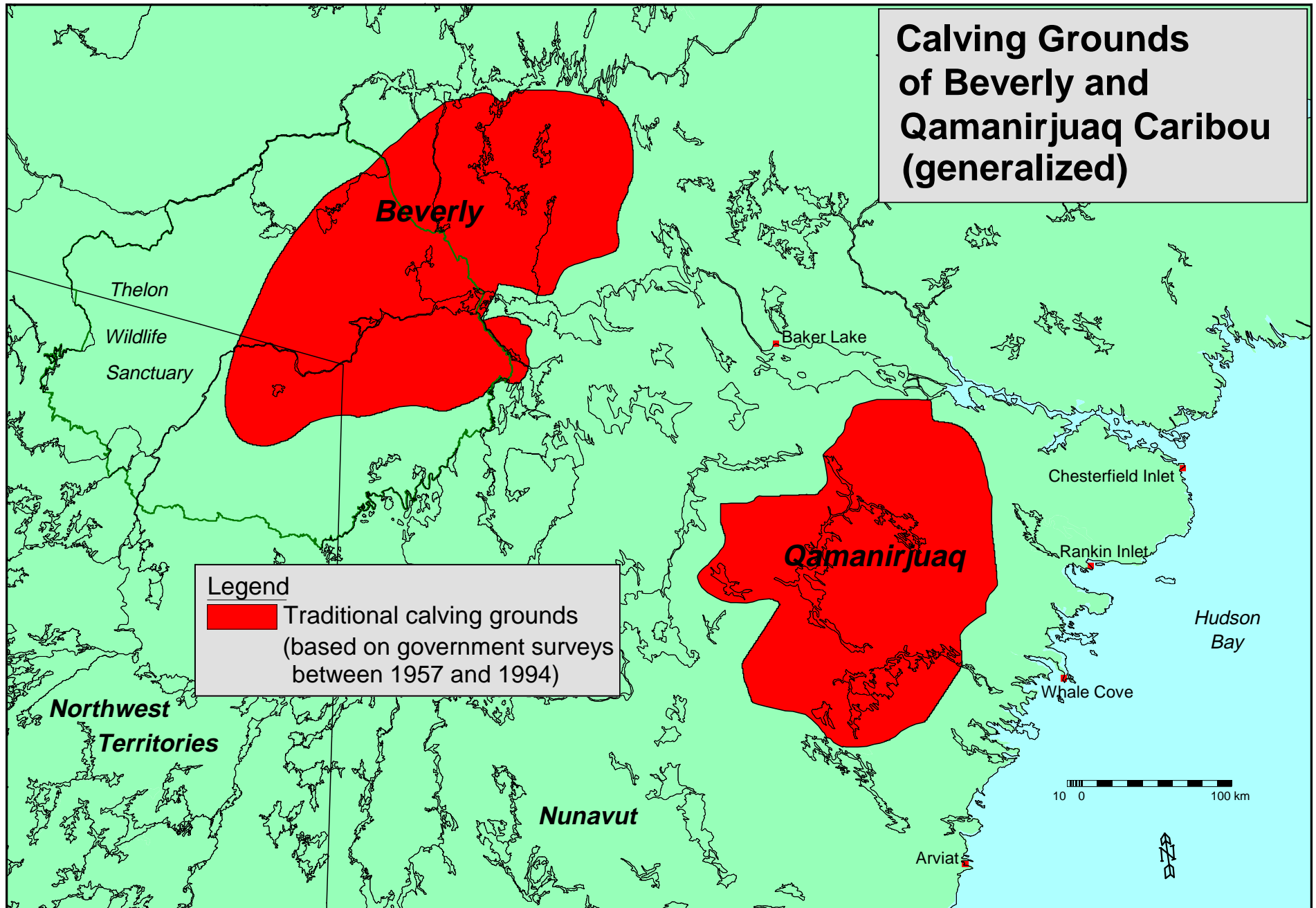
MAP OF CARIBOU PROTECTION AREAS



APPENDIX III

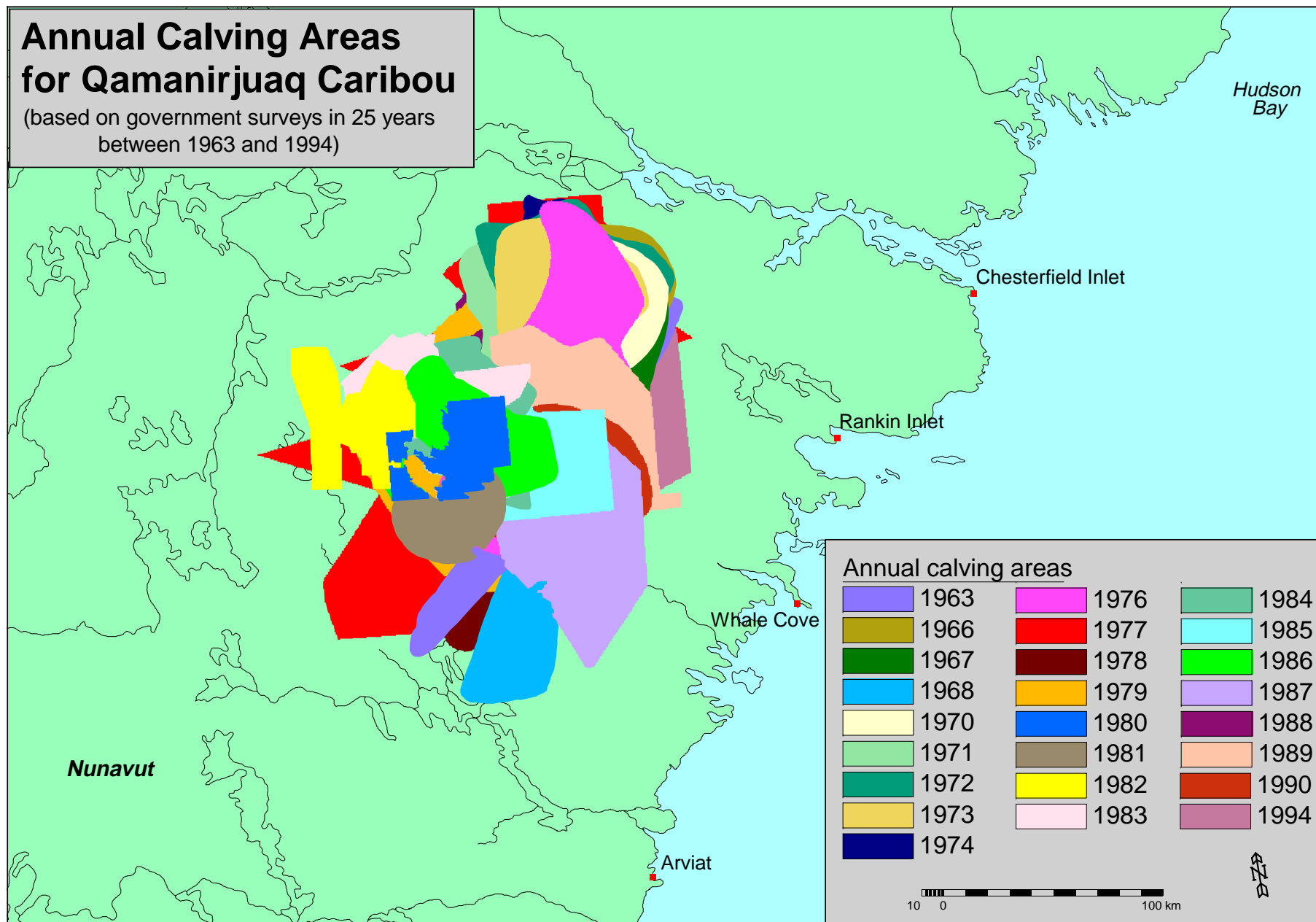
**MAPS FROM THE BEVERLY AND
QAMANIRJUAQ CARIBOU MANAGEMENT
BOARD**

Calving Grounds of Beverly and Qamanirjuaq Caribou (generalized)



Annual Calving Areas for Qamanirjuaq Caribou

(based on government surveys in 25 years
between 1963 and 1994)



APPENDIX IV
WILDLIFE SIGHTING SHEETS

WILDLIFE SIGHTINGS FOR CAMP

[illegible]

	A	B	E	F	H	I	J	K
1	WILDLIFE SIGHTINGS FOR DRILL							
2								
3	Species	Age (Adult, calf)	Drill Hole	Direction	Date	Time		
4								
5								
6								
7								
8								
9								
10								
11								
12								
13								
14								
15								
16								
17								
18								
19								
20								
21								
22								
23								
24								
25								
26								
27								
28								
29								
30								
31								
32								
33								
34								
35								
36								
37								
38								
39								
40								
41								
42								
43								
44								
45								
46								
47								
48								

WILDLIFE SIGHTINGS FOR FIELD CREWS

Please fill in as much information as possible. If you don't know, please use a "U" for Unknown.

1. Animal sighted? _____
2. How many? _____
3. Age? ☐ Adult ☐ Calf/cub/pup ☐ Unknown
4. Sex? ☐ Male ☐ Female ☐ Unknown
5. What is the animal doing?

6. Date? Time
7. Your location at time of sighting?
GPS coordinate:
8. Approximate distance to the animal? _____
9. Direction the animal is from your location? _____
10. Observed by?
11. What task was being performed in the area of the sighting?

WILDLIFE SIGHTINGS FOR HELICOPTER PILOTS

1. Animal sighted? _____
 2. How many? (approx.) _____
 3. Date? Time
 4. Your location at time of sighting?
GPS coordinate:
 5. Direction the animal is from your location? _____
-

1. Animal sighted? _____
 2. How many? (approx.) _____
 3. Date? Time
 4. Your location at time of sighting?
GPS coordinate:
 5. Direction the animal is from your location? _____
-

1. Animal sighted? _____
2. How many? (approx.) _____
3. Date? Time
4. Your location at time of sighting?
GPS coordinate:
5. Direction the animal is from your location? _____