

N2015C0014
2020 CIRNAC LAND USE ANNUAL REPORT

FOR THE ASTON BAY PROPERTY
(ALSO KNOWN AS THE STORM PROPERTY)
NUNAVUT, CANADA

Prepared For:



Aston Bay Holdings Ltd.
204-80 Richmond Street West
Toronto, ON M5H 2A4

Prepared By:

APEX Geoscience Ltd.
100-11450 160 St NW
Edmonton AB, T5M 3Y7

March 2021

Table of Contents

1	Summary	3
2	Introduction	4
3	Land Use Area Description and Location	4
4	2020 Exploration	7
5	Personnel	7
6	Land Use Considerations.....	7
6.1	Camp & Waste.....	7
6.2	Fuel Storage.....	9
6.3	Flights	9
6.4	Drilling.....	9
6.5	Inuit Owned Land	11
7	Wildlife and Environment	11
8	Reclamation Work.....	11
9	Waste Disposal.....	11
10	Inspections	11
11	2021 Work Plan.....	11

Tables

Table 1 Storm Camp Remaining Structures August 25, 2018	8
Table 2 Storm Camp Remaining Equipment August 25, 2018	8
Table 3 Storm Camp Fuel Inventory August 25, 2018	9
Table 4 Remaining Drill Equipment August 25, 2018	10
Table 5 Remaining Drill Consumables August 25, 2018.....	10

Figures

Figure 1 Aston Bay Property Location.....	5
Figure 2 Aston Bay Property Mineral Tenure Map.....	6

Appendices

Appendix 1 - 2020 Aston Bay Property Mineral Claims and Prospecting Permits.....	13
Appendix 2 - 2018 Aston Bay Property Photos.....	16

1 Summary

CIRNAC Land Use Permit Number: N2015C0014

NWB Water Licence Number: 2BE-STO1520

Work Completed: None

Dates Work Completed: N/A

Property Location: NTS 058B14, 058B15, 058C02, 058C03, 058C06, 058C07, 058C10, 058C11, 058C13, 058C14, 058F02, 058F03 and 058F04; Somerset Island, Nunavut, Canada

Storm Camp Location: 73°39'23" N latitude; 94°27'07" W longitude

2 Introduction

The Aston Bay Property (the Property) is located on northern Somerset Island, Nunavut in the Canadian Arctic Archipelago (Figure 1). The nearest community is the hamlet of Qausuittuq (Resolute Bay), located 112 km north of the Property, on Cornwallis Island. The Property is approximately 1,500 km northwest of Iqaluit, and about 1,500 km northeast of Yellowknife, Northwest Territories. The Aston Bay Property includes the Seal Zinc prospect and multiple copper-silver showings, collectively known as the Storm Copper prospect.

During 2020, no exploration work was completed on the Property. All details within the report pertain to the structures, fuel, and equipment that remain on site from the 2018 program.

3 Land Use Area Description and Location

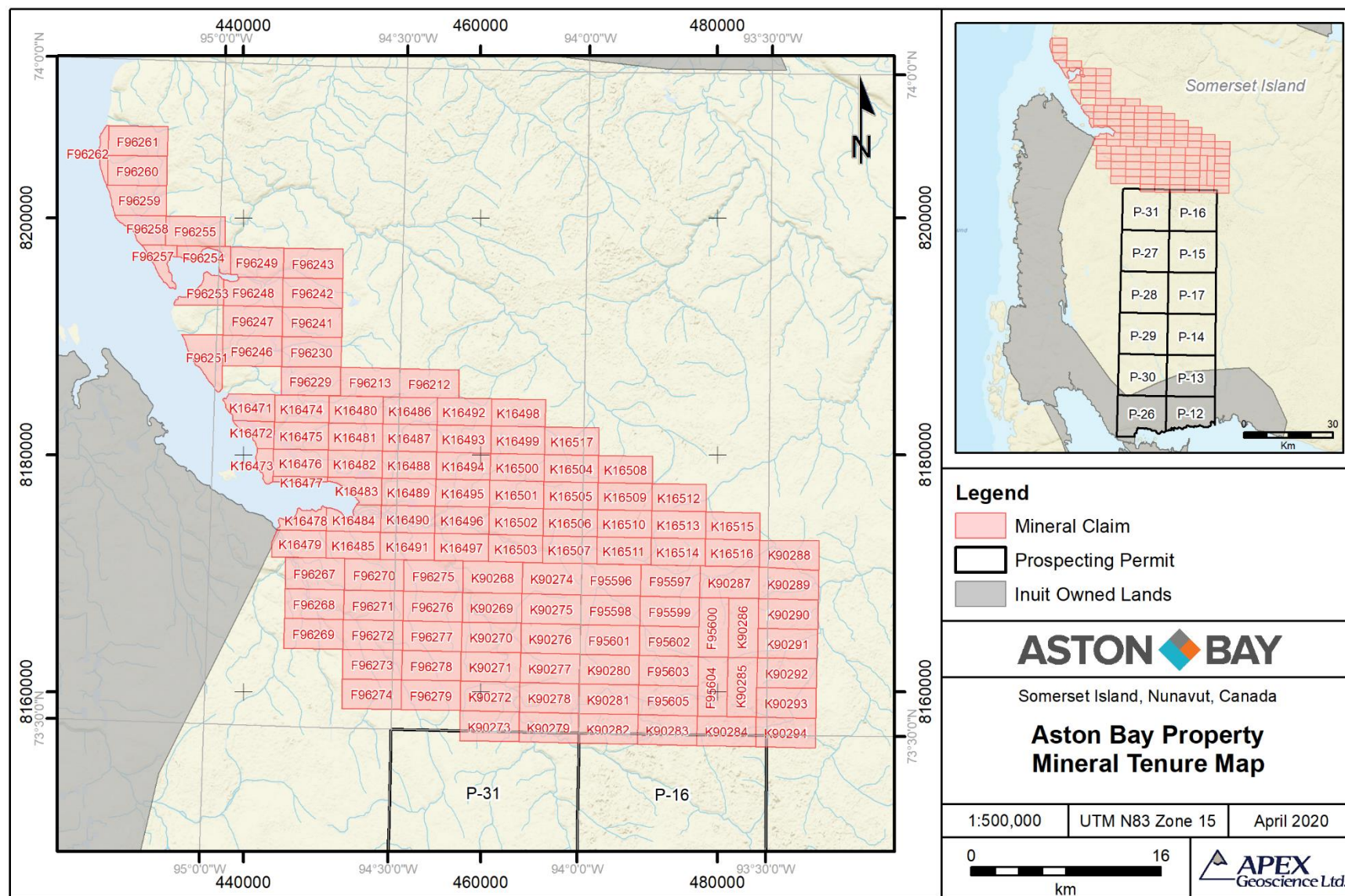
The Aston Bay Property is situated in the Qikiqtaaluk Region of Nunavut, within the 1:50,000 scale National Topographic System (NTS) maps 058B14 and 15, 058C02, 03, 06, 07, 10, 11, 13 and 14 and 058F02, 03 and 04. The Property comprises one hundred eighteen contiguous mineral claims and twelve prospecting permits (Figure 2; Appendix 1). The mineral claims and prospecting permits are 100% owned by Aston Bay.

The Aston Bay Property covers a combined area of approximately 391, 483 ha and is bound by latitudes 72°45' N and 73°56' N, and longitudes 93°20' W and 95°20' W and is centered at approximately 73°20' N latitude and 94°30' W longitude.

Figure 1 Aston Bay Property Location



Figure 2 Aston Bay Property Mineral Tenure Map



4 2020 Exploration

No work was completed in 2020.

5 Personnel

No work was completed in 2020.

6 Land Use Considerations

No work was completed during the 2020 season; therefore, no water was used, nor waste deposited. The camp stands as it was left at the end of the 2018 season, including structures, a small cache of fuel, and drilling equipment. All that remains on site is described below.

A water licence renewal/amendment was approved on July 16, 2020 and the new licence number is 2BE-STO2025. An application for a new Land Use Permit is currently under review with CIRNAC.

6.1 Camp & Waste

The Storm Camp is located along the Aston River at approximately 73°39'23" N latitude and 94°27'07" W longitude. The camp site is located on an elevated gravel bar in the river valley. It includes an airstrip suitable for landing a Twin Otter. A staging area was established at the east end of the airstrip, approximately 600 metres west of Storm Camp.

Eighteen structures were constructed during 2018, in addition to the four existing plywood structures already on site (Pacto toilet shack, storage shack, water tank shack, generator shack). With the exception of the kitchen and core cutting shack, the new structures were all insulated Weatherport tents, built upon existing wooden floors. The kitchen was constructed using dimensional lumber and plywood, upon an existing wooden floor.

Upon completion of the 2018 program, all tents and plywood buildings were left in place for future use. Electronics and communications gear were removed from site. Most other camp equipment was stored on site inside of the tents or plywood buildings. All remaining lumber was stacked at the east end of camp for future use. Tables 1 and 2 list the structures and major equipment left on site at the close of the season on August 25, 2018. Camp photos are included in Appendix 2.

Table 1 Storm Camp Remaining Structures August 25, 2018

Quantity	Item
1	16'x32' plywood kitchen building.
1	14'x32' plywood floor for core shack.
1	12'x20' plywood latrine shack. Includes 5 Pacto toilets.
1	10'x16' plywood storage shack.
1	10'x12' plywood generator shack. Includes exhaust piping, etc.
1	12'x12' plywood core cutting shack.
11	14'x16' insulated Weatherport tents on plywood floor to serve as sleeper tents. Includes plywood beds, tables, chairs etc.
3	14'x16' insulated Weatherport tents on plywood floors to serve as dries. Includes shower stalls, sink, plumbing, etc.
2	14'x16' insulated Weatherport tents on plywood floors to serve as office and first aid tent. Includes tables, chairs, etc.

Table 2 Storm Camp Remaining Equipment August 25, 2018

Quantity	Item
2	Water tanks (350gal & 250gal)
2	Hot water tanks
2	Water supply pumps with fish screen and hose line
2	Water pressure pumps
1	14 kVA diesel generator with 5 kW gas backups (x2)
1	Electrified bear fence (taken down at end of season)
1	Dual chamber-controlled air incinerator
4	Refrigerators
3	Chest freezers
2	Cooking stoves
1	Dishwasher
3	Washing machines
3	Dryers
17	Toyotomi heating stoves
4	Oil drip stoves
5	Pacto toilets
3	Containment berms for fuel cache & drill equipment
20	Mini berms for tent drums and fuel transfer
	Heavy electrical cables and panel boxes
	Various lumber (stacked by generator shack)
	Various office, camp and medical supplies

6.2 Fuel Storage

During the 2018 program, the existing fuel cache was used, located adjacent to Storm Camp at approximately 73° 39' 23" N latitude and 94° 26' 58" W longitude. A small amount of fuel remains at the cache (Table 3). All remaining fuel is stored in covered secondary containment berms. Jet fuel is stored separately from diesel and gas. Remaining propane cylinders were secured to one of the plywood buildings.

Table 3 Storm Camp Fuel Inventory August 25, 2018

Material	Container	Quantity on Site
Diesel	205 L Drum	17 Drums
Jet Fuel (Jet A)	205 L Drum	26 Drums
Gasoline	205 L Drum	2 Drums
Propane	100 lb Cylinder	7 Cylinders

The fuel cache is located more than 31 metres from the normal high-water mark of any water bodies. No damaged or leaking drums were identified during inspection prior to the end of the 2018 season. Drums were stored in an organized manner with the bungs at the 9 o'clock and 3 o'clock positions. There are no empty fuel drums stored on site.

6.3 Flights

No work was completed in 2020.

6.4 Drilling

One Multi Power Products Discovery II drill and one Zinex A-5 drill, including most of the ancillary equipment and consumables, were left on site for subsequent drill programs. All equipment was drained of fuel and oil for off-season storage. Tables 4 and 5 list the drilling equipment and consumables left on site at the close of the season on August 25, 2018.

Table 4 Remaining Drill Equipment August 25, 2018

Quantity	Item
1	Zinex A-5 diamond drill with engine, feed frame, control panel, drill head, foot clamp, wireline and drill shack
1	MPP Discovery II diamond drill with engine, feed frame, control panel, drill head, foot clamp, wireline and drill shack
1	Spare engine
1	Spare rotation motor
1	Spare drill head
2	Spare feed cylinders
2	Spare foot clamps
2	Spare winch and pump drive motors
1	Spare main hydraulic pump
1	Spare wireline winch (2 spare rolls of wireline)
6	5 kW gas generators
2	Welders
5	Supply pumps (1 spare transmission)
4	Trash pumps
3	Spare down hole pumps
2	Mud separators
6	Mud tanks
8	Coil stoves
3	Diesel heaters
6	Fuel tanks
2	Fly baskets
266	3m NQ drill rods
90	1.5m casing
16	Outer tubes
18	Inner tubes
75	200 psi water line
75	400 psi water line
4	Spill kits
2	Survival shacks
	Various fittings & tooling

Table 5 Remaining Drill Consumables August 25, 2018

Quantity	Item
112	Various drill muds (5 gal pails)
23	Motor oil (5 gal pails)
30	Hydraulic oil (5 gal pails)
36	Antifreeze
140	Calcium Chloride (50lb bags)

6.4 Archaeological Sites

No work was completed in 2020.

6.5 Inuit Owned Land

No work was completed in 2020.

7 Wildlife and Environment

No work was completed in 2020.

8 Reclamation Work

No work was completed in 2020.

9 Waste Disposal

No work was completed in 2020.

10 Inspections

An inspection was performed by CIRNAC Water Resource Officer Joseph Monteith on September 7, 2020. The spill appears to be from a 5 gallon container of a non-hazardous drilling additive, but as it cannot be definitively determined from the pictures, the Spill Report case will be left open until such time it can be identified and rectified. The spill is contained within the berm. Due to the remote location, difficulty accessing the site, time of year and the fact the spill is contained within a berm, cleanup is anticipated to be completed during the next site visit. Inspection Report completed by Mr. Monteith is still pending.

11 2021 Work Plan

The 2021 Aston Bay Property exploration program is anticipated to include a diamond drilling program of 5,000 to 10,000 metres (m), utilizing one or two drills. The average hole depth is expected to be approximately 250 m, up to a maximum anticipated length of 700 m. Additional exploration work may include soil and rock sampling, mapping and geophysical surveys. The 2021 exploration program is projected to start as early as June and continue until as late as September. Similar programs are anticipated for 3 to 4 subsequent years.

All exploration activities will be helicopter supported and based out of Storm Camp, located along the Aston River at approximately 73°39'23" N latitude and 94°27'07" W longitude. The camp site is located on an elevated gravel bar in the Aston River valley. It includes an airstrip suitable for

landing a Twin Otter. Camp infrastructure includes six plywood buildings and sixteen Weatherport tents, built upon wooden platforms.

A fuel cache of approximately 80,000 L (~400 drums) will be established at the current fuel cache location, adjacent to camp. The cache will be primarily diesel and jet fuel, with small quantities of gasoline and propane. All fuel will be stored within secondary containment. All fuel caches will be located a minimum distance of 31 metres from the normal high-water mark of any water body.

With proper design and execution, environmental impacts of the proposed exploration program are expected to be minimal. Plans are continuously being updated for storage and handling of fuel, waste management, reclamation, and wildlife management, all with the goal of ensuring minimal impact on the environment.

Appendix 1 - 2020 Aston Bay Property Mineral Claims and Prospecting Permits

Mineral Claims						
Claim Name	Claim Number	Claim Status	Issue Date	Anniversary Date	Area (Ha)	Owner Name
AB 1	K16471	ACTIVE	2012-09-12	2023-09-12	905.28	Aston Bay Holdings Inc. (100%)
AB 2	K16472	ACTIVE	2012-09-12	2023-09-12	538.64	Aston Bay Holdings Inc. (100%)
AB 3	K16473	SUSPENDED	2012-09-12	2023-09-12	362.27	Aston Bay Holdings Inc. (100%)
AB 4	K16474	ACTIVE	2012-09-12	2023-09-12	1,045.10	Aston Bay Holdings Inc. (100%)
AB 5	K16475	ACTIVE	2012-09-12	2023-09-12	1,045.10	Aston Bay Holdings Inc. (100%)
AB 6	K16476	ACTIVE	2012-09-12	2023-09-12	1,045.10	Aston Bay Holdings Inc. (100%)
AB 7	K16477	SUSPENDED	2012-09-12	2023-09-12	222.86	Aston Bay Holdings Inc. (100%)
AB 8	K16478	SUSPENDED	2012-09-12	2023-09-12	609.46	Aston Bay Holdings Inc. (100%)
AB 9	K16479	SUSPENDED	2012-09-12	2023-09-12	1,029.92	Aston Bay Holdings Inc. (100%)
AB 10	K16480	SUSPENDED	2012-09-12	2022-09-12	1,045.10	Aston Bay Holdings Inc. (100%)
AB 11	K16481	ACTIVE	2012-09-12	2023-09-12	1,045.10	Aston Bay Holdings Inc. (100%)
AB 12	K16482	ACTIVE	2012-09-12	2023-09-12	1,045.10	Aston Bay Holdings Inc. (100%)
AB 13	K16483	SUSPENDED	2012-09-12	2023-09-12	672.18	Aston Bay Holdings Inc. (100%)
AB 14	K16484	SUSPENDED	2012-09-12	2023-09-12	885.86	Aston Bay Holdings Inc. (100%)
AB 15	K16485	SUSPENDED	2012-09-12	2023-09-12	1,045.10	Aston Bay Holdings Inc. (100%)
AB 16	K16486	SUSPENDED	2012-09-12	2023-09-12	1,045.10	Aston Bay Holdings Inc. (100%)
AB 17	K16487	SUSPENDED	2012-09-12	2023-09-12	1,045.10	Aston Bay Holdings Inc. (100%)
AB 18	K16488	ACTIVE	2012-09-12	2023-09-12	1,045.10	Aston Bay Holdings Inc. (100%)
AB 19	K16489	SUSPENDED	2012-09-12	2023-09-12	1,045.10	Aston Bay Holdings Inc. (100%)
AB 20	K16490	SUSPENDED	2012-09-12	2023-09-12	1,045.10	Aston Bay Holdings Inc. (100%)
AB 21	K16491	ACTIVE	2012-09-12	2023-09-12	1,045.10	Aston Bay Holdings Inc. (100%)
AB 22	K16492	SUSPENDED	2012-09-12	2022-09-12	1,045.10	Aston Bay Holdings Inc. (100%)
AB 23	K16493	SUSPENDED	2012-09-12	2023-09-12	1,045.10	Aston Bay Holdings Inc. (100%)
AB 24	K16494	SUSPENDED	2012-09-12	2023-09-12	1,045.10	Aston Bay Holdings Inc. (100%)
AB 25	K16495	ACTIVE	2012-09-12	2023-09-12	1,045.10	Aston Bay Holdings Inc. (100%)
AB 26	K16496	ACTIVE	2012-09-12	2023-09-12	1,045.10	Aston Bay Holdings Inc. (100%)
AB 27	K16497	ACTIVE	2012-09-12	2023-09-12	1,045.10	Aston Bay Holdings Inc. (100%)
AB 28	K16498	SUSPENDED	2012-09-12	2023-09-12	1,045.10	Aston Bay Holdings Inc. (100%)
AB 29	K16499	SUSPENDED	2012-09-12	2023-09-12	1,045.10	Aston Bay Holdings Inc. (100%)
AB 30	K16500	SUSPENDED	2012-09-12	2023-09-12	1,045.10	Aston Bay Holdings Inc. (100%)
AB 31	K16501	ACTIVE	2012-09-12	2023-09-12	1,045.10	Aston Bay Holdings Inc. (100%)
AB 32	K16502	ACTIVE	2012-09-12	2023-09-12	1,045.10	Aston Bay Holdings Inc. (100%)
AB 33	K16503	ACTIVE	2012-09-12	2023-09-12	1,045.10	Aston Bay Holdings Inc. (100%)
AB 34	K16504	SUSPENDED	2012-09-12	2023-09-12	1,045.10	Aston Bay Holdings Inc. (100%)
AB 35	K16505	SUSPENDED	2012-09-12	2023-09-12	1,045.10	Aston Bay Holdings Inc. (100%)
AB 36	K16506	SUSPENDED	2012-09-12	2023-09-12	1,045.10	Aston Bay Holdings Inc. (100%)
AB 37	K16507	SUSPENDED	2012-09-12	2023-09-12	1,045.10	Aston Bay Holdings Inc. (100%)
AB 38	K16508	SUSPENDED	2012-09-12	2023-09-12	1,045.10	Aston Bay Holdings Inc. (100%)
AB 39	K16509	SUSPENDED	2012-09-12	2023-09-12	1,045.10	Aston Bay Holdings Inc. (100%)
AB 40	K16510	SUSPENDED	2012-09-12	2023-09-12	1,045.10	Aston Bay Holdings Inc. (100%)

N2015C0014 - 2020 CIRNAC Land Use Annual Report for the Aston Bay Property

Mineral Claims						
Claim Name	Claim Number	Claim Status	Issue Date	Anniversary Date	Area (Ha)	Owner Name
AB 41	K16511	ACTIVE	2012-09-12	2023-09-12	1,045.10	Aston Bay Holdings Inc. (100%)
AB 42	K16512	SUSPENDED	2012-09-12	2023-09-12	1,045.10	Aston Bay Holdings Inc. (100%)
AB 43	K16513	SUSPENDED	2012-09-12	2023-09-12	1,045.10	Aston Bay Holdings Inc. (100%)
AB 44	K16514	ACTIVE	2012-09-12	2023-09-12	1,045.10	Aston Bay Holdings Inc. (100%)
AB 45	K16515	SUSPENDED	2012-09-12	2023-09-12	1,045.10	Aston Bay Holdings Inc. (100%)
AB 46	K16516	SUSPENDED	2012-09-12	2023-09-12	1,045.10	Aston Bay Holdings Inc. (100%)
AB 47	K16517	SUSPENDED	2012-09-12	2023-09-12	1,045.10	Aston Bay Holdings Inc. (100%)
AB 49	F96212	SUSPENDED	2016-07-26	2021-07-26	1,250.00	Aston Bay Holdings Inc. (100%)
AB 50	F96213	SUSPENDED	2016-07-26	2021-07-26	1,250.00	Aston Bay Holdings Inc. (100%)
AB 56	F96229	SUSPENDED	2016-07-26	2021-07-26	1,250.00	Aston Bay Holdings Inc. (100%)
AB 57	F96230	SUSPENDED	2016-07-26	2021-07-26	1,250.00	Aston Bay Holdings Inc. (100%)
AB 58	F96241	SUSPENDED	2016-08-09	2021-08-09	1,250.00	Aston Bay Holdings Inc. (100%)
AB 59	F96242	SUSPENDED	2016-08-09	2021-08-09	1,250.00	Aston Bay Holdings Inc. (100%)
AB 60	F96243	SUSPENDED	2016-08-09	2022-08-09	1,250.00	Aston Bay Holdings Inc. (100%)
AB 63	F96246	SUSPENDED	2016-07-26	2022-07-26	1,250.00	Aston Bay Holdings Inc. (100%)
AB 64	F96247	SUSPENDED	2016-07-26	2021-07-26	1,250.00	Aston Bay Holdings Inc. (100%)
AB 65	F96248	SUSPENDED	2016-08-09	2021-08-09	1,194.57	Aston Bay Holdings Inc. (100%)
AB 66	F96249	SUSPENDED	2016-08-09	2022-08-09	1,118.04	Aston Bay Holdings Inc. (100%)
AB 68	F96251	SUSPENDED	2016-07-26	2021-07-26	1,030.01	Aston Bay Holdings Inc. (100%)
AB 70	F96253	SUSPENDED	2016-07-26	2022-07-26	660.66	Aston Bay Holdings Inc. (100%)
AB 71	F96254	SUSPENDED	2016-07-26	2022-07-26	466.60	Aston Bay Holdings Inc. (100%)
AB 72	F96255	SUSPENDED	2016-07-26	2022-07-26	1,250.00	Aston Bay Holdings Inc. (100%)
AB 74	F96257	SUSPENDED	2016-07-26	2023-07-26	550.28	Aston Bay Holdings Inc. (100%)
AB 75	F96258	SUSPENDED	2016-07-26	2021-07-26	793.00	Aston Bay Holdings Inc. (100%)
AB 76	F96259	SUSPENDED	2016-07-26	2021-07-26	1,173.24	Aston Bay Holdings Inc. (100%)
AB 77	F96260	SUSPENDED	2016-07-26	2021-07-26	1,250.00	Aston Bay Holdings Inc. (100%)
AB 78	F96261	SUSPENDED	2016-07-26	2021-07-26	1,250.00	Aston Bay Holdings Inc. (100%)
AB 79	F96262	SUSPENDED	2016-07-26	2022-07-26	289.38	Aston Bay Holdings Inc. (100%)
AB 84	F96267	SUSPENDED	2016-08-09	2021-08-09	1,250.00	Aston Bay Holdings Inc. (100%)
AB 85	F96268	SUSPENDED	2016-08-10	2027-08-10	1,250.00	Aston Bay Holdings Inc. (100%)
AB 86	F96269	SUSPENDED	2016-08-10	2021-08-10	1,250.00	Aston Bay Holdings Inc. (100%)
AB 87	F96270	ACTIVE	2016-08-10	2027-08-10	1,250.00	Aston Bay Holdings Inc. (100%)
AB 88	F96271	ACTIVE	2016-08-10	2027-08-10	1,250.00	Aston Bay Holdings Inc. (100%)
AB 89	F96272	ACTIVE	2016-08-10	2027-08-10	1,250.00	Aston Bay Holdings Inc. (100%)
AB 90	F96273	SUSPENDED	2016-08-10	2027-08-10	1,250.00	Aston Bay Holdings Inc. (100%)
AB 91	F96274	SUSPENDED	2016-08-10	2021-08-10	1,250.00	Aston Bay Holdings Inc. (100%)
AB 92	F96275	ACTIVE	2016-08-09	2027-08-09	1,250.00	Aston Bay Holdings Inc. (100%)
AB 93	F96276	ACTIVE	2016-08-09	2027-08-09	1,250.00	Aston Bay Holdings Inc. (100%)
AB 94	F96277	SUSPENDED	2016-08-09	2027-08-09	1,250.00	Aston Bay Holdings Inc. (100%)
AB 95	F96278	SUSPENDED	2016-08-09	2025-08-09	1,250.00	Aston Bay Holdings Inc. (100%)
AB 96	F96279	SUSPENDED	2016-08-09	2021-08-09	1,250.00	Aston Bay Holdings Inc. (100%)
AB 98	K90268	ACTIVE	2016-08-09	2027-08-09	1,250.00	Aston Bay Holdings Inc. (100%)

N2015C0014 - 2020 CIRNAC Land Use Annual Report for the Aston Bay Property

Mineral Claims						
Claim Name	Claim Number	Claim Status	Issue Date	Anniversary Date	Area (Ha)	Owner Name
AB 99	K90269	SUSPENDED	2016-08-09	2027-08-09	1,250.00	Aston Bay Holdings Inc. (100%)
AB 100	K90270	SUSPENDED	2016-08-09	2027-08-09	1,250.00	Aston Bay Holdings Inc. (100%)
AB 101	K90271	SUSPENDED	2016-08-09	2025-08-09	1,250.00	Aston Bay Holdings Inc. (100%)
AB 102	K90272	SUSPENDED	2016-08-09	2022-08-09	1,250.00	Aston Bay Holdings Inc. (100%)
AB 103	K90273	SUSPENDED	2016-08-10	2022-08-10	1,250.00	Aston Bay Holdings Inc. (100%)
AB 104	K90274	SUSPENDED	2016-08-09	2027-08-09	1,250.00	Aston Bay Holdings Inc. (100%)
AB 105	K90275	SUSPENDED	2016-08-09	2027-08-09	1,250.00	Aston Bay Holdings Inc. (100%)
AB 106	K90276	SUSPENDED	2016-08-09	2027-08-09	1,250.00	Aston Bay Holdings Inc. (100%)
AB 107	K90277	ACTIVE	2016-08-09	2027-08-09	1,250.00	Aston Bay Holdings Inc. (100%)
AB 108	K90278	SUSPENDED	2016-08-09	2022-08-09	1,250.00	Aston Bay Holdings Inc. (100%)
AB 109	K90279	SUSPENDED	2016-08-10	2021-08-10	1,250.00	Aston Bay Holdings Inc. (100%)
AB 110	K90280	SUSPENDED	2016-08-09	2027-08-09	1,250.00	Aston Bay Holdings Inc. (100%)
AB 111	K90281	SUSPENDED	2016-08-09	2022-08-09	1,250.00	Aston Bay Holdings Inc. (100%)
AB 112	K90282	ACTIVE	2016-08-09	2020-08-09	1,250.00	Aston Bay Holdings Inc. (100%)
AB 113	K90283	SUSPENDED	2016-08-09	2021-08-09	1,250.00	Aston Bay Holdings Inc. (100%)
AB 114	K90284	ACTIVE	2016-08-09	2027-08-09	1,250.00	Aston Bay Holdings Inc. (100%)
AB 115	K90285	ACTIVE	2016-08-09	2027-08-09	1,250.00	Aston Bay Holdings Inc. (100%)
AB 116	K90286	SUSPENDED	2016-08-09	2024-08-09	1,250.00	Aston Bay Holdings Inc. (100%)
AB 117	K90287	ACTIVE	2016-08-09	2027-08-09	1,250.00	Aston Bay Holdings Inc. (100%)
AB 118	K90288	SUSPENDED	2016-08-09	2022-08-09	1,250.00	Aston Bay Holdings Inc. (100%)
AB 119	K90289	ACTIVE	2016-08-09	2027-08-09	1,250.00	Aston Bay Holdings Inc. (100%)
AB 120	K90290	SUSPENDED	2016-08-09	2022-08-09	1,250.00	Aston Bay Holdings Inc. (100%)
AB 121	K90291	SUSPENDED	2016-08-09	2022-08-09	1,250.00	Aston Bay Holdings Inc. (100%)
AB 122	K90292	SUSPENDED	2016-08-09	2022-08-09	1,250.00	Aston Bay Holdings Inc. (100%)
AB 123	K90293	SUSPENDED	2016-08-09	2022-08-09	1,250.00	Aston Bay Holdings Inc. (100%)
AB 124	K90294	SUSPENDED	2016-08-09	2022-08-09	1,250.00	Aston Bay Holdings Inc. (100%)
ASTON 1	F95596	ACTIVE	2014-09-02	2025-09-02	1,250.00	Aston Bay Holdings Inc. (100%)
ASTON 2	F95597	ACTIVE	2014-09-02	2025-09-02	1,250.00	Aston Bay Holdings Inc. (100%)
ASTON 3	F95598	ACTIVE	2014-09-02	2025-09-02	1,250.00	Aston Bay Holdings Inc. (100%)
ASTON 4	F95599	SUSPENDED	2014-09-02	2025-09-02	1,250.00	Aston Bay Holdings Inc. (100%)
ASTON 5	F95600	ACTIVE	2014-09-02	2025-09-02	1,250.00	Aston Bay Holdings Inc. (100%)
ASTON 6	F95601	ACTIVE	2014-09-02	2025-09-02	1,250.00	Aston Bay Holdings Inc. (100%)
ASTON 7	F95602	SUSPENDED	2014-09-02	2025-09-02	1,250.00	Aston Bay Holdings Inc. (100%)
ASTON 8	F95603	SUSPENDED	2014-09-02	2025-09-02	1,250.00	Aston Bay Holdings Inc. (100%)
ASTON 9	F95604	SUSPENDED	2014-09-02	2025-09-02	1,250.00	Aston Bay Holdings Inc. (100%)
ASTON 10	F95605	SUSPENDED	2014-09-02	2025-09-02	1,250.00	Aston Bay Holdings Inc. (100%)

Total Area: 130,761.15

Appendix 2 - 2018 Aston Bay Property Photos



Photo 1: Storm Camp during operations - aerial (looking northeast)



Photo 2: Storm Camp during demobilization – south side of camp (looking west)



Photo 3: Storm Camp during demobilization – main street (looking west)



Photo 4: Storm Camp during demobilization – main street (looking east)



Photo 5: Storm Camp jet fuel cache after shutdown (looking east)



Photo 6: Storm Camp diesel/gas fuel cache after shutdown (looking east)