

N2021C0004
2021 CIRNAC LAND USE ANNUAL REPORT

**FOR THE ASTON BAY PROPERTY
(ALSO KNOWN AS THE STORM PROPERTY)
NUNAVUT, CANADA**

Prepared For:

Aston Bay Holdings Ltd.
204-80 Richmond Street West
Toronto, ON M5H 2A4

Prepared By:

APEX Geoscience Ltd.
410-800 West Pender Street
Vancouver, BC V6C 2V6

March 2022

Table of Contents

1	Summary	1
2	Introduction	2
3	Land Use Area Description and Location	2
4	2021 Exploration Program	5
5	Personnel	5
6	Land Use.....	8
6.1	Camp & Waste	8
6.2	Fuel Storage	10
6.3	Flights	10
6.4	Drilling	11
6.5	Archaeological Sites	12
6.6	Inuit Owned Land	12
7	Wildlife and Environment	12
8	Reclamation Work.....	13
9	Waste Disposal.....	13
10	Inspections	13
11	2022 Work Plan.....	14

Tables

Table 1	Storm Camp Remaining Structures August 22, 2021	8
Table 2	Storm Camp Remaining Equipment August 22, 2021	9
Table 3	Storm Camp Fuel Inventory August 22, 2021	10
Table 4	Remaining Drill Equipment August 22, 2021	11
Table 5	Remaining Drill Consumables August 22, 2021.....	12

Figures

Figure 1	Aston Bay Property Location.....	3
Figure 2	Aston Bay Property Mineral Tenure Map	4
Figure 3	Seal Zinc Deposit TDEM Survey.....	6
Figure 4	Storm Copper TDEM Survey.....	7

Appendices

Appendix 1	2021 Aston Bay Property Mineral Claims and Prospecting Permits.....	15
Appendix 2	2021 Field Personnel.....	18
Appendix 3	2021 Aston Bay Property Photos	19
Appendix 4	2021 Storm Camp Water Usage	24

1 Summary

CIRNAC Land Use Permit Number: **N2021C0004**

NWB Water Licence Number: **2BE-STO2025**

Work Completed: Ground Electromagnetic Geophysical Surveys

Dates Work Completed: July 22, 2021 to August 22, 2021

Property Location: NTS 058B14, 058C03, 058C06, 058C10, 058C11, 058C13, 058C14; Somerset Island, Nunavut, Canada

Storm Camp Location: 73°39'23" N latitude; 94°27'07" W longitude

2 Introduction

The Aston Bay Property is located on northern Somerset Island, Nunavut in the Canadian Arctic Archipelago (Figure 1). The nearest community is the hamlet of Resolute Bay, located 112 km north of the Property, on Cornwallis Island. The Property is approximately 1,500 km northwest of Iqaluit, the capital of Nunavut, and about 1,500 km northeast of Yellowknife, Northwest Territories. The Aston Bay Property includes the Seal Zinc prospect and multiple copper-silver showings, collectively known as the Storm Copper prospect.

From July 22 to August 22 2021, geophysical contractor Initial Exploration Services Inc. (“Initial Exploration”) completed ground electromagnetic geophysical surveys at the Aston Bay Property. The 2021 exploration program comprised of 94.4 line-kilometres (945 survey stations) of fixed loop, time-domain electromagnetic (TDEM) surveys. Surveying was carried out in the central Storm Copper area and over the Seal Zinc deposit, within claims 100054, 100085, 100086, 100088, 100089 and 100090. The program was supervised by personnel from Aston Bay Holdings Ltd. (“Aston Bay”) and APEX Geoscience Ltd. (“APEX”). All personnel were based out of Storm Camp located at approximately 73°39’23” N latitude and 94°27’07” W longitude.

3 Land Use Area Description and Location

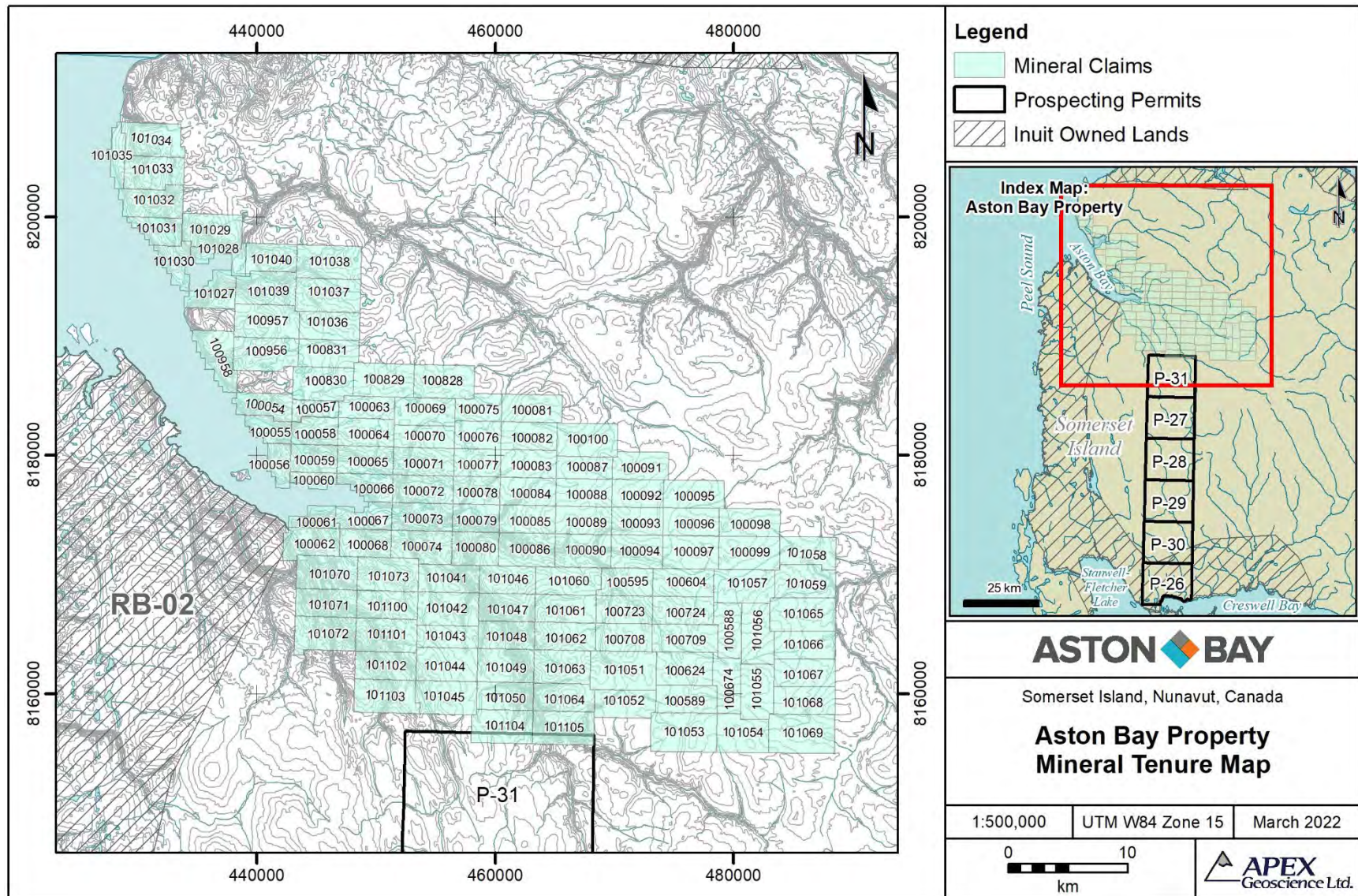
The Aston Bay Property is situated in the Qikiqtaaluk Region of Nunavut, within the 1:50,000 scale NTS (National Topographic System) map sheets 058B14 and 15, and 058C02, 03, 06, 07, 10, 11, 13 and 14. The Property comprises 117 contiguous mineral claims and 6 prospecting permits (Figure 2; Appendix 1). The mineral claims and prospecting permits are 100% owned by Aston Bay.

The Aston Bay Property covers a combined area of approximately 302,765.2 ha. The Property is bound by latitudes 72°45’ N and 73°57’ N, and longitudes 93°21’ W and 95°21’ W, and is centered at approximately 73°20’ N latitude and 94°20’ W longitude.

Figure 1 Aston Bay Property Location



Figure 2 Aston Bay Property Mineral Tenure Map



4 2021 Exploration Program

The 2021 exploration program was completed between July 22 and August 22, 2021. A notice of commencement was sent to CIRNAC at aadnc.landmining.aandc@canada.ca on July 15, 2021.

All exploration work was conducted within mineral claims 100054, 100085, 100086, 100088, 100089 and 100090. All field activities were helicopter supported and based out of Storm Camp, located at approximately 73°39'23" N latitude and 94°27'07" W longitude. The 2021 program was managed by Aston Bay and APEX personnel, and executed by Initial Exploration of Langley, BC. A Bell 206L3 helicopter was contracted from Custom Helicopters Ltd. of St. Andrews, MB. Fixed-wing support was provided by Kenn Borek Air Ltd. of Calgary, AB. Camp services and logistical support was provided by South Camp Enterprises of Resolute Bay, NU, Atco Structures & Logistics of Resolute Bay, NU, Complete Safety Services Inc. of Fort St. John, BC, and Discovery Mining Services Ltd. of Yellowknife, NT.

The exploration program comprised of 94.4 line-kilometres of TDEM surveys that were carried out over the Seal Zinc deposit (Figure 3) and central Storm Copper area (Figure 4). 3 lines with a total of 27 stations were completed at Seal Zinc. 50 lines with a total of 918 stations were completed at the Storm Copper Area. The Storm TDEM surveys covered the 4100 Zone, 2750N Zone and 2200N Zone showings.

5 Personnel

Personnel associated with the 2021 exploration program are listed in Appendix 2.

Figure 3 Seal Zinc Deposit TDEM Survey

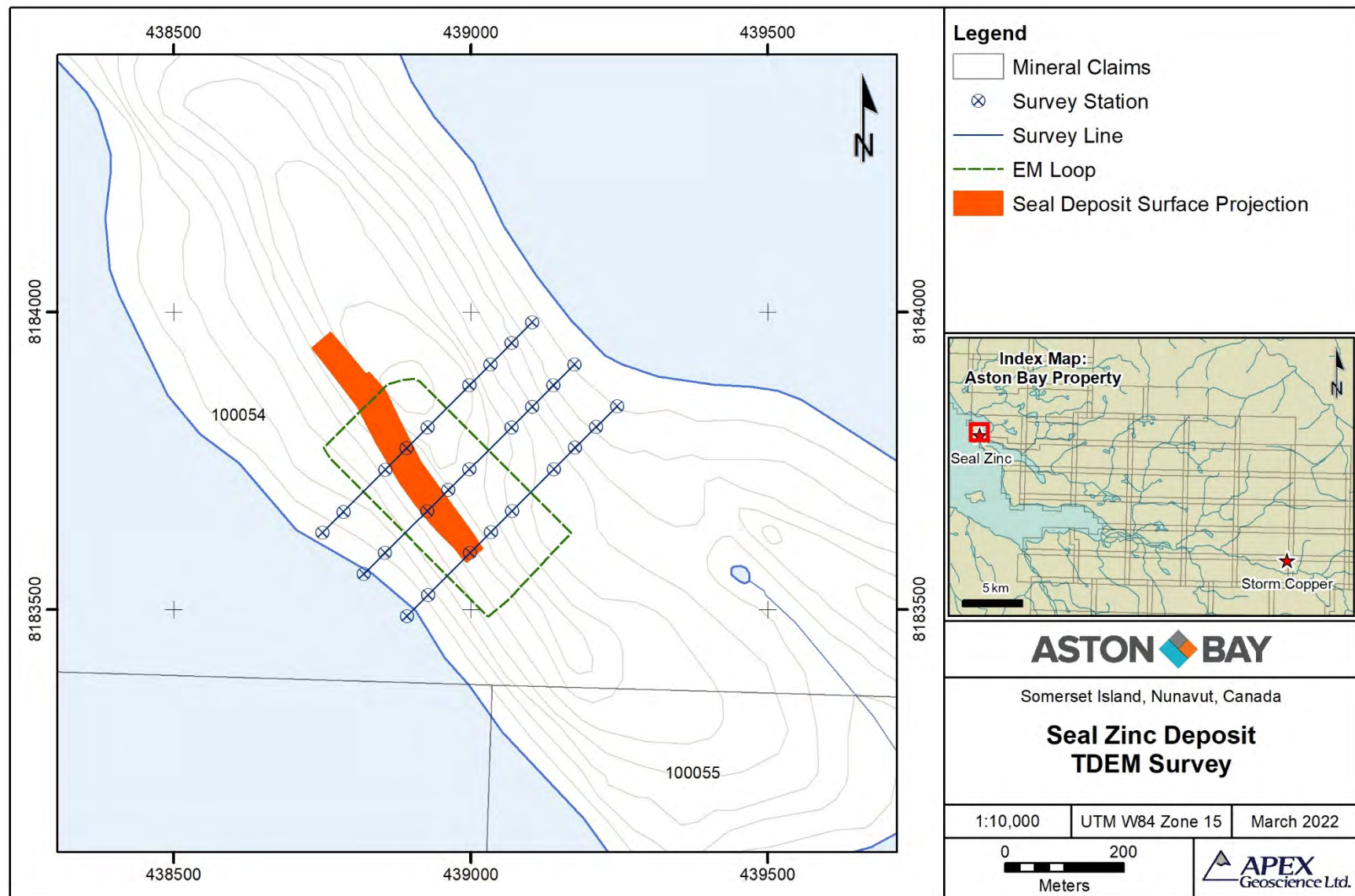
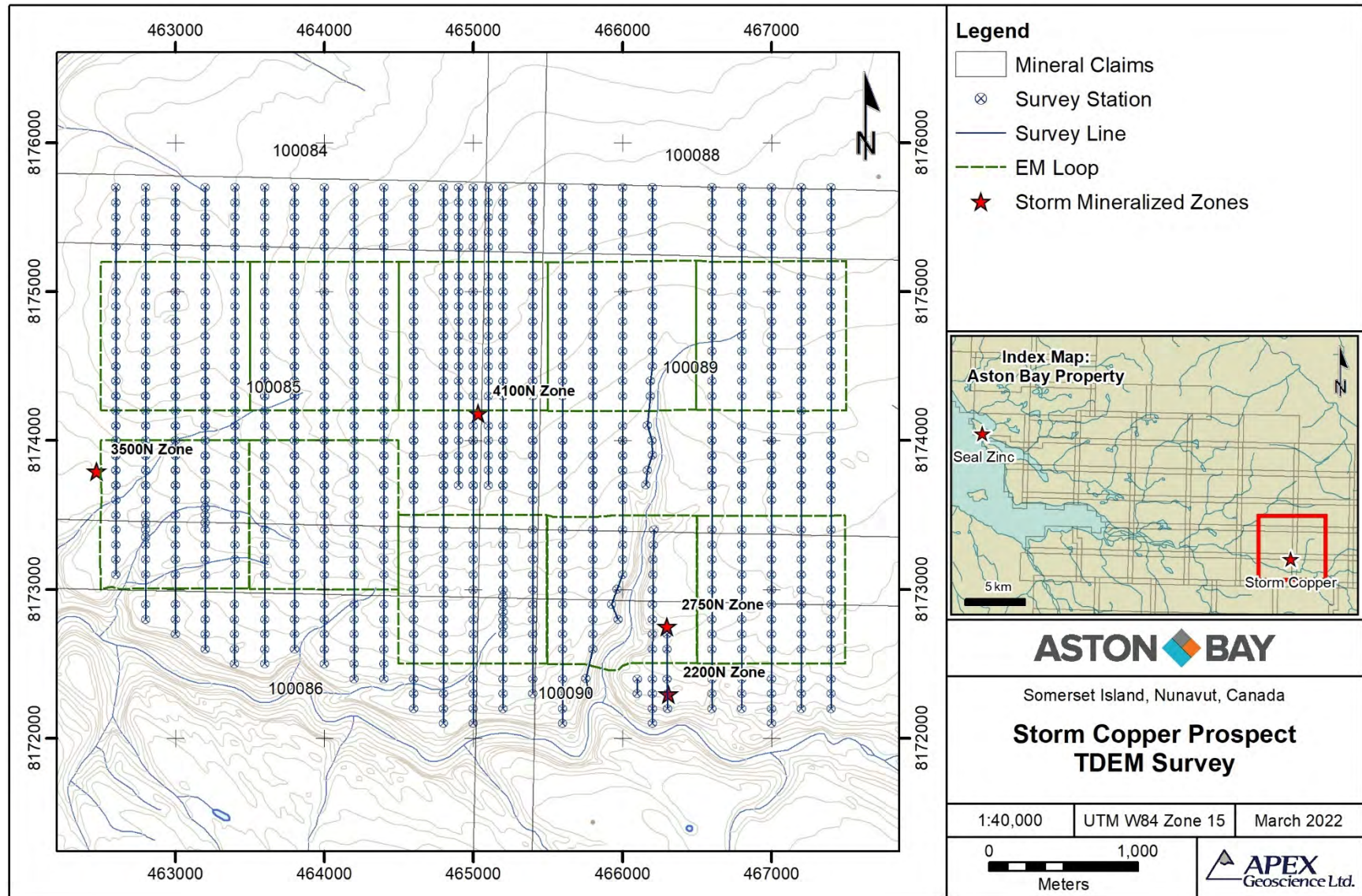


Figure 4 Storm Copper TDEM Survey



6 Land Use

6.1 Camp & Waste

The Storm Camp is located along the Aston River at approximately 73°39'23" N latitude and 94°27'07" W longitude. The camp site is located on an elevated gravel bar in the river valley. It includes an airstrip suitable for landing a Twin Otter. A staging area was established at the east end of the airstrip, approximately 600 metres west of Storm Camp.

Storm Camp was constructed prior to the 2018 season and was used to support exploration during subsequent years. The camp comprises 22 structures including 16 insulated Weatherport tents built upon wooden floors and 6 plywood structures. No additional buildings were constructed, and no additional equipment was left on site during 2021. All tents and plywood buildings remain in place for future use.

Upon seasonal closure, electronics and communications gear were removed from site. Most other camp equipment was stored on site inside of the tents or plywood buildings. All remaining lumber was stacked at the east end of camp for future use. Tables 1 and 2 list the structures and major equipment left on site at the close of the season on August 22, 2021. Camp photos are included in Appendix 3.

Table 1 Storm Camp Remaining Structures August 22, 2021

Quantity	Item
1	16'x32' plywood kitchen building.
1	14'x32' plywood floor for core shack.
1	12'x20' plywood latrine shack. Includes 5 pacto toilets.
1	10'x16' plywood storage shack.
1	10'x12' plywood generator shack. Includes exhaust piping, etc.
1	12'x12' plywood core cutting shack.
11	14'x16' insulated Weatherport tents on plywood floor to serve as sleeper tents. Includes plywood beds, tables, chairs etc.
3	14'x16' insulated Weatherport tents on plywood floors to serve as dries. Includes shower stalls, sink, plumbing, etc.
2	14'x16' insulated Weatherport tents on plywood floors to serve as office and first aid tent. Includes tables, chairs, etc.

Table 2 Storm Camp Remaining Equipment August 22, 2021

Quantity	Item
2	Water tanks (350gal & 250gal)
2	Hot water tanks
2	Water supply pumps with fish screen and hose line
2	Water pressure pumps
1	14 kVA diesel generator with 5 kW gas backups (x2)
1	Electrified bear fence (taken down at end of season)
1	Dual chamber-controlled air incinerator
4	Refrigerators
3	Chest freezers
2	Cooking stoves
1	Dishwasher
3	Washing machines
3	Dryers
17	Toyotomi heating stoves
4	Oil drip stoves
5	Pacto toilets
3	Containment berms for fuel cache & drill equipment
20	Mini berms for tent drums and fuel transfer
	Heavy electrical cables and panel boxes
	Various lumber (stacked by generator shack)
	Various office, camp and medical supplies

Camp water was drawn from the Aston River for cooking and cleaning. Drinking water was purchased and flown in from Yellowknife/Resolute in 5 gallon jugs. A total of 11.73 m³ of water was drawn from the Aston River for camp use between July 22 and August 22, 2021, averaging 0.37 m³ per day. During this time running water, laundry and showers were available in camp. Water was drawn from the river using a 5.5 HP gas powered pump or an electric trash pump. The pump intake hose was equipped with a mesh screen to ensure fish were not entrained. When in use, during fueling or in transit, the pump was placed in a plastic spill tray. When not in use, the pump was stored in camp within secondary containment. No fuel was stored at the pump site and all fueling was completed in camp. Water volumes were measured using markings on the water storage tanks at 50 gallon increments. The volumes were recorded in a daily log by the camp foreman (Appendix 4).

6.2 Fuel Storage

During the 2021 program, the existing fuel cache was used, located adjacent to Storm Camp at approximately 73° 39' 23" N latitude and 94° 26' 58" W longitude. A small fuel cache remains at the Property (Table 3). All remaining fuel is stored in covered secondary containment berms. Jet fuel is stored separately from diesel and gas. Remaining propane cylinders were secured to one of the plywood buildings.

Table 3 Storm Camp Fuel Inventory August 22, 2021

Material	Container	Quantity on Site
Diesel	205 L Drum	25 Drums
Jet Fuel (Jet A)	205 L Drum	36 Drums
Gasoline	205 L Drum	25 Drums
Propane	100 lb Cylinder	7 Cylinders

During the 2021 program, a temporary fuel cache was established adjacent to the camp airstrip at 73° 39' 24" N latitude, 94° 28' 20" W longitude. Drums were stored temporarily and moved to the main camp fuel cache on an ongoing basis as they were delivered. A notice of temporary fuel cache establishment was also to Joseph Monteith, Water Resources Officer for CIRNAC, on July 15, 2021.

All fuel caches are located a minimum of 31 metres from the normal high-water mark of any water bodies. No damaged or leaking drums were identified during inspection prior to the end of the 2021 season. Drums were stored in an organized manner with the bungs at the 9 o'clock and 3 o'clock positions. 59 empty drums and 2 empty propane cylinders remain on site.

6.3 Flights

All field work completed during 2021 was helicopter supported, using Storm Camp as a base. A Bell 206L3 helicopter was contracted from Custom Helicopters Ltd. for the duration of the program. Personnel and gear were transported to and from the field daily using the Bell 206L3. Pilots were instructed, when possible, to avoid landing in areas with soft ground to avoid rutting. Helicopter pads at the camp were situated on firm, level ground a safe distance from work sites.

A fixed wing Twin Otter aircraft based in Resolute Bay, NU was chartered from Kenn Borek Air Ltd. as needed. The Twin Otter was used to move personnel, fuel and supplies between Resolute Bay and the Storm Camp airstrip.

6.4 Drilling

One Multi Power Products Discovery II drill and one Zinex A-5 drill, including most of the ancillary equipment and consumables, remain on site for future drill programs. All equipment was drained of fuel and oil for off-season storage. Tables 4 and 5 list the drilling equipment and consumables left on site at the close of the season on August 22, 2021.

Table 4 Remaining Drill Equipment August 22, 2021

Quantity	Item
1	Zinex A-5 diamond drill with engine, feed frame, control panel, drill head, foot clamp, wireline and drill shack
1	MPP Discovery II diamond drill with engine, feed frame, control panel, drill head, foot clamp, wireline and drill shack
1	Spare engine
1	Spare rotation motor
1	Spare drill head
2	Spare feed cylinders
2	Spare foot clamps
2	Spare winch and pump drive motors
1	Spare main hydraulic pump
1	Spare wireline winch (2 spare rolls of wireline)
6	5 kW gas generators
2	Welders
5	Supply pumps (1 spare transmission)
4	Trash pumps
3	Spare down hole pumps
2	Mud separators
6	Mud tanks
8	Coil stoves
3	Diesel heaters
6	Fuel tanks
2	Fly baskets
266	3m NQ drill rods
90	1.5m casing
16	Outer tubes
18	Inner tubes
75	200 psi water line
75	400 psi water line
4	Spill kits
2	Survival shacks
	Various fittings & tooling

Table 5 Remaining Drill Consumables August 22, 2021

Quantity	Item
112	Various drill muds (5 gal pails)
23	Motor oil (5 gal pails)
30	Hydraulic oil (5 gal pails)
36	Antifreeze
140	Calcium Chloride (50lb bags)

6.5 Archaeological Sites

No new or known archaeological sites were encountered during the 2021 exploration program.

6.6 Inuit Owned Land

Aston Bay Prospecting Permit P-26 and portions of P-30 lie within Inuit Owned Land (IOL) parcel RB-02. No work was completed on IOL during the 2021 Aston Bay Property exploration program.

7 Wildlife and Environment

As a general rule, any interaction with wildlife was discouraged; however, all personnel were instructed on the appropriate action to take when encountering wildlife in the field. Whenever possible, the helicopter pilot was instructed to maintain a minimum altitude of 610 metres above ground level and, when necessary, alter course to avoid disturbing any wildlife spotted during flight. Prior to, and after dropping off field crews, the pilot conducted high altitude (>610 m) reconnaissance in order to identify and locate any wildlife in the area.

A number of preventative measures were employed to avoid wildlife interaction in camp. Storm Camp was equipped with an electrified “bear fence” as a wildlife deterrent and each tent was equipped with an air horn and bear spray. The site supervisors and camp foreman had access to firearms in case of emergency. All food wastes were stored in appropriate bear proof containers and incinerated daily to remove attractants. Personnel were instructed to avoid bringing food into sleeper tents and to remove waste regularly. The bear fence wire was taken down at the end of the 2021 season to avoid wildlife entanglements.

No wildlife sightings were recorded during the 2021 exploration program. No environmental studies were conducted in 2021.

8 Reclamation Work

Progressive reclamation included keeping work areas clean and removing wastes from work sites daily. All wastes were stored in appropriate containers for later incineration or removal. The camp was inspected by the site supervisors for cleanliness and any sign of contamination prior to the close of the field program. All sites were deemed acceptable.

9 Waste Disposal

All combustible wastes were incinerated on site using a batch feed dual-chamber controlled air incinerator. Any residual waste (ash) was sealed in 5 gallon metal pails.

Grey water from the kitchen and each dry was piped to excavated sumps behind the buildings and over 100 m from the nearest water body. A grease trap was used for the kitchen sump. The trap was emptied as needed and the contents were sealed in 5 gallon pails. The grease trap was removed from site at the end of the 2021 program. No leaks or overflows were observed in any of the sumps.

Pacto toilets were used to collect sewage. All pacto bags were incinerated on site using a batch feed dual-chamber controlled air incinerator.

10 Inspections

Aston Bay is not aware of any inspections completed during 2021.

An inspection was performed by CIRNAC Water Resource Officer Joseph Monteith on September 7, 2020. During the inspection Mr. Monteith noted a spill that appeared to be from a 5 gallon container of a non-hazardous drilling additive, but it could not be definitively determined from the pictures. The spill was contained within the berm. Due to the remote location, difficulty accessing the site, time of year and the fact the spill was contained within a berm, the cleanup was performed during the 2021 exploration program.

The spill was determined to be from a single 5 gallon container of non-hazardous, non-toxic drilling fluid manufactured by AMC called CR 650. All of the liquid within the berm was pumped into empty drums and allowed to settle. The water was then siphoned out into a natural sump and the settled drill fluids were burned on site in the incinerator. Photos and details of the cleanup were sent to Mr. Monteith via email on September 21, 2021. The photos are included in Appendix 3 of this annual report.

11 2022 Work Plan

The 2022 Aston Bay Property exploration program is anticipated to include a diamond drilling program of 3,000 metres, utilizing one or two drills. The program will focus on the Storm graben area and should time and budget permit, additional drilling could be completed at Seal. The average hole depth is expected to be approximately 250m, up to a maximum anticipated length of 700m. Additional exploration work may include soil and rock sampling, mapping, and geophysical surveys. The 2022 exploration program is projected to start as early as June and continue until as late as September. Similar programs are anticipated for three to four subsequent years.

All exploration activities will be helicopter supported and based out of storm Camp, located along the Aston River at approximately 73°39'23" N latitude and 94°27'07" W longitude. The camp site is located on an elevated gravel bar in the Aston River valley. It includes an airstrip suitable for landing a Twin Otter. Camp infrastructure includes 6 plywood buildings and 16 Weatherport tents, built upon wooden platforms.

A fuel cache of approximately 80,000 L (~400 drums) will be established at the current fuel cache location, adjacent to camp. The cache will be primarily diesel and jet fuel, with small quantities of gasoline and propane. All fuel will be stored within secondary containment. All fuel caches will be located a minimum distance of 31 metres from the normal high-water mark of any water body.

With proper design and execution, environmental impacts of the proposed exploration program are expected to be minimal. Plans are continuously being updated for storage and handling of fuel, waste management, reclamation, and wildlife management, all with the goal of ensuring minimal impact on the environment.

Appendix 1 2021 Aston Bay Property Mineral Claims and Prospecting Permits

Mineral Claims		
Tenure Number	Area (ha)	Owner Name
100054	1,163.3	Aston Bay Holdings Inc. (100%)
100055	800.6	Aston Bay Holdings Inc. (100%)
100056	637.8	Aston Bay Holdings Inc. (100%)
100057	1,181.5	Aston Bay Holdings Inc. (100%)
100058	1,255.6	Aston Bay Holdings Inc. (100%)
100059	1,311.8	Aston Bay Holdings Inc. (100%)
100060	510.5	Aston Bay Holdings Inc. (100%)
100061	913.4	Aston Bay Holdings Inc. (100%)
100062	1,408.1	Aston Bay Holdings Inc. (100%)
100063	1,417.5	Aston Bay Holdings Inc. (100%)
100064	1,419.3	Aston Bay Holdings Inc. (100%)
100065	1,421.1	Aston Bay Holdings Inc. (100%)
100066	1,039.6	Aston Bay Holdings Inc. (100%)
100067	1,223.8	Aston Bay Holdings Inc. (100%)
100068	1,316.6	Aston Bay Holdings Inc. (100%)
100069	1,417.5	Aston Bay Holdings Inc. (100%)
100070	1,419.3	Aston Bay Holdings Inc. (100%)
100071	1,421.1	Aston Bay Holdings Inc. (100%)
100072	1,422.8	Aston Bay Holdings Inc. (100%)
100073	1,424.6	Aston Bay Holdings Inc. (100%)
100074	1,426.3	Aston Bay Holdings Inc. (100%)
100075	1,308.5	Aston Bay Holdings Inc. (100%)
100076	1,310.1	Aston Bay Holdings Inc. (100%)
100077	1,311.8	Aston Bay Holdings Inc. (100%)
100078	1,313.4	Aston Bay Holdings Inc. (100%)
100079	1,315.0	Aston Bay Holdings Inc. (100%)
100080	1,316.6	Aston Bay Holdings Inc. (100%)
100081	1,417.5	Aston Bay Holdings Inc. (100%)
100082	1,419.3	Aston Bay Holdings Inc. (100%)
100083	1,421.1	Aston Bay Holdings Inc. (100%)
100084	1,422.8	Aston Bay Holdings Inc. (100%)
100085	1,424.6	Aston Bay Holdings Inc. (100%)
100086	1,426.3	Aston Bay Holdings Inc. (100%)
100087	1,421.1	Aston Bay Holdings Inc. (100%)
100088	1,422.8	Aston Bay Holdings Inc. (100%)
100089	1,424.6	Aston Bay Holdings Inc. (100%)
100090	1,426.3	Aston Bay Holdings Inc. (100%)
100091	1,311.8	Aston Bay Holdings Inc. (100%)
100092	1,313.4	Aston Bay Holdings Inc. (100%)
100093	1,315.0	Aston Bay Holdings Inc. (100%)
100094	1,316.6	Aston Bay Holdings Inc. (100%)
100095	1,422.8	Aston Bay Holdings Inc. (100%)
100096	1,424.6	Aston Bay Holdings Inc. (100%)
100097	1,426.3	Aston Bay Holdings Inc. (100%)

N2021C0004 - 2021 CIRNAC Land Use Annual Report for the Aston Bay Property

Mineral Claims		
Tenure Number	Area (ha)	Owner Name
100098	1,424.6	Aston Bay Holdings Inc. (100%)
100099	1,426.3	Aston Bay Holdings Inc. (100%)
100100	1,419.3	Aston Bay Holdings Inc. (100%)
100588	1,541.4	Aston Bay Holdings Inc. (100%)
100589	1,546.4	Aston Bay Holdings Inc. (100%)
100595	1,721.3	Aston Bay Holdings Inc. (100%)
100604	1,794.5	Aston Bay Holdings Inc. (100%)
100624	1,801.6	Aston Bay Holdings Inc. (100%)
100674	1,435.0	Aston Bay Holdings Inc. (100%)
100708	1,542.2	Aston Bay Holdings Inc. (100%)
100709	1,542.2	Aston Bay Holdings Inc. (100%)
100723	1,540.3	Aston Bay Holdings Inc. (100%)
100724	1,540.3	Aston Bay Holdings Inc. (100%)
100828	1,524.7	Aston Bay Holdings Inc. (100%)
100829	1,415.7	Aston Bay Holdings Inc. (100%)
100830	1,724.5	Aston Bay Holdings Inc. (100%)
100831	1,522.8	Aston Bay Holdings Inc. (100%)
100956	1,722.3	Aston Bay Holdings Inc. (100%)
100957	1,520.8	Aston Bay Holdings Inc. (100%)
100958	1,396.4	Aston Bay Holdings Inc. (100%)
101027	1,103.1	Aston Bay Holdings Inc. (100%)
101028	848.4	Aston Bay Holdings Inc. (100%)
101029	1,514.8	Aston Bay Holdings Inc. (100%)
101030	848.8	Aston Bay Holdings Inc. (100%)
101031	1,063.9	Aston Bay Holdings Inc. (100%)
101032	1,566.8	Aston Bay Holdings Inc. (100%)
101033	1,690.6	Aston Bay Holdings Inc. (100%)
101034	1,490.7	Aston Bay Holdings Inc. (100%)
101035	575.2	Aston Bay Holdings Inc. (100%)
101036	1,520.8	Aston Bay Holdings Inc. (100%)
101037	1,771.9	Aston Bay Holdings Inc. (100%)
101038	1,516.7	Aston Bay Holdings Inc. (100%)
101039	1,717.7	Aston Bay Holdings Inc. (100%)
101040	1,408.3	Aston Bay Holdings Inc. (100%)
101041	1,794.5	Aston Bay Holdings Inc. (100%)
101042	1,540.3	Aston Bay Holdings Inc. (100%)
101043	1,542.2	Aston Bay Holdings Inc. (100%)
101044	1,801.6	Aston Bay Holdings Inc. (100%)
101045	1,527.9	Aston Bay Holdings Inc. (100%)
101046	1,794.5	Aston Bay Holdings Inc. (100%)
101047	1,540.3	Aston Bay Holdings Inc. (100%)
101048	1,542.2	Aston Bay Holdings Inc. (100%)
101049	1,801.6	Aston Bay Holdings Inc. (100%)
101050	1,546.4	Aston Bay Holdings Inc. (100%)
101051	1,801.6	Aston Bay Holdings Inc. (100%)
101052	1,546.4	Aston Bay Holdings Inc. (100%)

N2021C0004 - 2021 CIRNAC Land Use Annual Report for the Aston Bay Property

Mineral Claims		
Tenure Number	Area (ha)	Owner Name
101053	1,806.5	Aston Bay Holdings Inc. (100%)
101054	1,677.5	Aston Bay Holdings Inc. (100%)
101055	1,416.6	Aston Bay Holdings Inc. (100%)
101056	1,559.7	Aston Bay Holdings Inc. (100%)
101057	1,794.5	Aston Bay Holdings Inc. (100%)
101058	1,499.6	Aston Bay Holdings Inc. (100%)
101059	1,611.4	Aston Bay Holdings Inc. (100%)
101060	1,757.9	Aston Bay Holdings Inc. (100%)
101061	1,430.2	Aston Bay Holdings Inc. (100%)
101062	1,432.0	Aston Bay Holdings Inc. (100%)
101063	1,673.0	Aston Bay Holdings Inc. (100%)
101064	1,435.9	Aston Bay Holdings Inc. (100%)
101065	1,540.2	Aston Bay Holdings Inc. (100%)
101066	1,799.4	Aston Bay Holdings Inc. (100%)
101067	1,544.4	Aston Bay Holdings Inc. (100%)
101068	1,546.3	Aston Bay Holdings Inc. (100%)
101069	1,806.5	Aston Bay Holdings Inc. (100%)
101070	1,794.5	Aston Bay Holdings Inc. (100%)
101071	1,540.3	Aston Bay Holdings Inc. (100%)
101072	1,578.9	Aston Bay Holdings Inc. (100%)
101073	1,666.3	Aston Bay Holdings Inc. (100%)
101100	1,430.2	Aston Bay Holdings Inc. (100%)
101101	1,432.0	Aston Bay Holdings Inc. (100%)
101102	1,672.9	Aston Bay Holdings Inc. (100%)
101103	1,472.7	Aston Bay Holdings Inc. (100%)
101104	1,548.2	Aston Bay Holdings Inc. (100%)
101105	1,437.7	Aston Bay Holdings Inc. (100%)
Claims Total:	169,610.0	

Prospecting Permits		
Permit Number	Area (ha)	Owner Name
P-26	20,564.8	Aston Bay Holdings Inc. (100%)
P-27	22,348.0	Aston Bay Holdings Inc. (100%)
P-28	22,510.2	Aston Bay Holdings Inc. (100%)
P-29	22,672.3	Aston Bay Holdings Inc. (100%)
P-30	22,834.3	Aston Bay Holdings Inc. (100%)
P-31	22,185.6	Aston Bay Holdings Inc. (100%)
Permit Total:	133,115.2	

Appendix 2 2021 Field Personnel

Company	Position	Name	Dates Involved*
Aston Bay Holdings	CEO / Project Manager	Tom Ullrich	July 29 – August 14
APEX Geoscience	Senior Geologist / Project Manager	Chris Livingstone	July 22 – August 1
Complete Safety Services	Cook / OFA	Yvonne Doonan	July 23 – August 14
Custom Helicopters	Helicopter Pilot	Arthur Reimer	July 26 – August 13
Discovery Mining Services	Camp Foreman	David Scott	July 23 – August 21
Discovery Mining Services	Camp Builder	Tookie McLeod	July 23 – July 26
Initial Exploration Services	Geophysics Foreman	Scott Smith	July 25 – August 14
Initial Exploration Services	Geophysics Crew	Brett Denomey	July 25 – August 14
Initial Exploration Services	Geophysics Crew	Rebecca Pearce	July 25 – August 14
Initial Exploration Services	Geophysics Crew	Jeffrey Zurek	July 25 – August 14
Initial Exploration Services	Geophysics Crew	Andrew Blagdon	July 25 – August 14
Initial Exploration Services	Geophysics Crew	Dennis Palos	July 25 – August 22
Initial Exploration Services	Geophysics Crew	Brandon Palos	July 25 – August 14
Initial Exploration Services	Geophysics Crew	Juan Roberto Ruiz	July 25 – August 14

*Includes travel days

Appendix 3 2021 Aston Bay Property Photos



Photo 1. Storm Camp during operations (looking east).



Photo 2. Storm Camp during operations (looking east).



Photo 3. Storm Camp jet fuel cache (looking northeast).

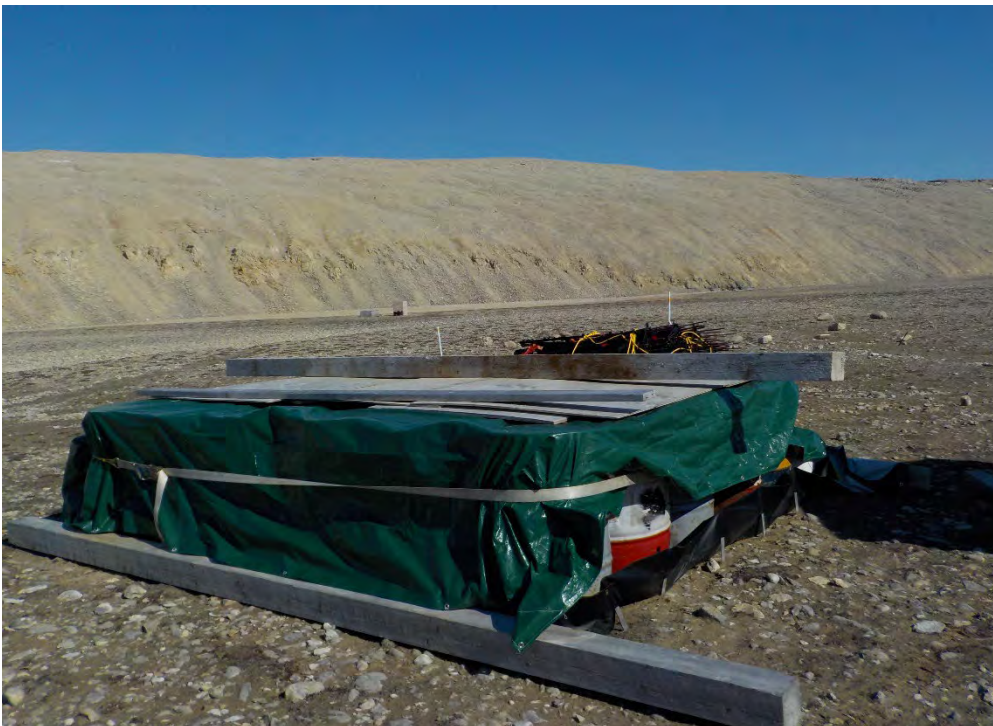


Photo 4. Storm Camp diesel/gas fuel cache (looking northeast).



Photo 5. Temporary fuel cache site at Storm Camp airstrip (looking east-northeast). All drums and berm removed at end of 2021 program.



Photo 6. Storm Camp during operations (looking west).



Photo 7. Photo captured by Mr. Monteith during the 2020 inspection. A 5 gallon container of non-hazardous, non-toxic drilling fluid (AMC CR 650) spilled and was contained within the berm.



Photo 8. Spill site after the liquid was pumped out of the berm and properly disposed of.

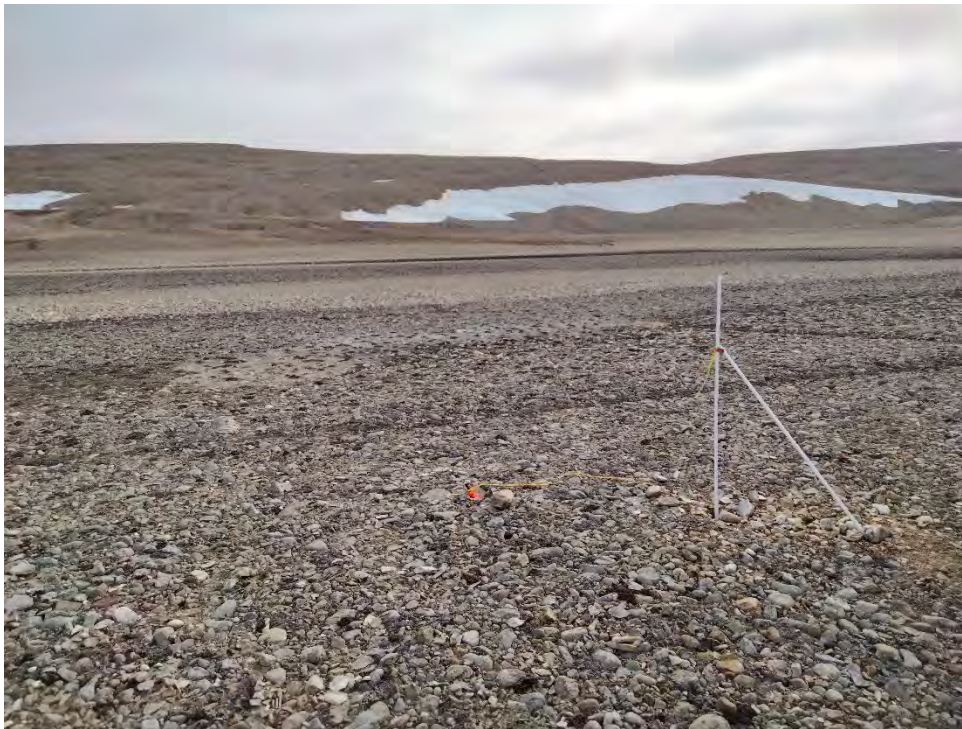


Photo 9. Natural sump area for siphoned water.



Photo 10. Source product of spill (CR-650). The product is listed as non-toxic, non-hazardous and a non-dangerous good.

Appendix 4 2021 Storm Camp Water Usage

Date	Water Utilized from Tank 1 (250 gal)	Water Utilized from Tank 2 (350 gal)
23-Jul-21		
24-Jul-21	100	350
25-Jul-21		
26-Jul-21	200	200
27-Jul-21		
28-Jul-21		
29-Jul-21	150	150
30-Jul-21		
31-Jul-21	150	100
01-Aug-21		
02-Aug-21	100	200
03-Aug-21		
04-Aug-21		
05-Aug-21	150	200
06-Aug-21		150
07-Aug-21		
08-Aug-21	100	150
09-Aug-21		
10-Aug-21		
11-Aug-21	100	200
12-Aug-21		
13-Aug-21	150	200
Total/tank:	1200	1900
Total used:	3,100 gal / 11.73 m³	