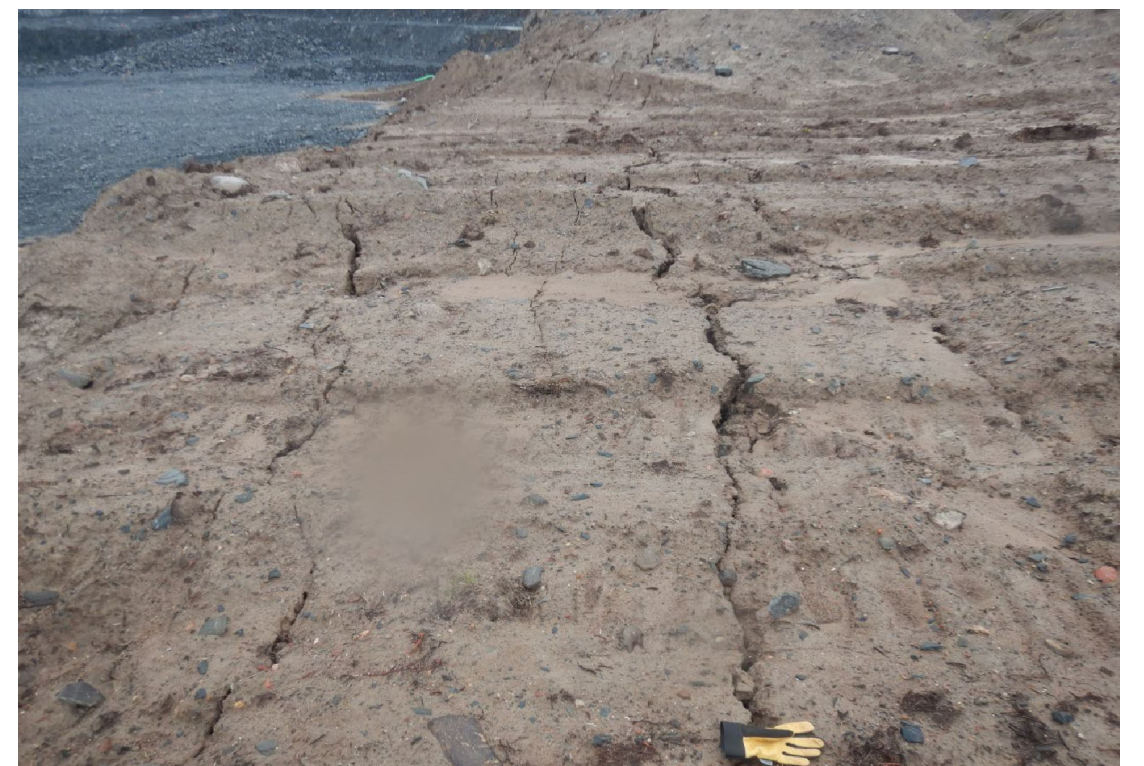


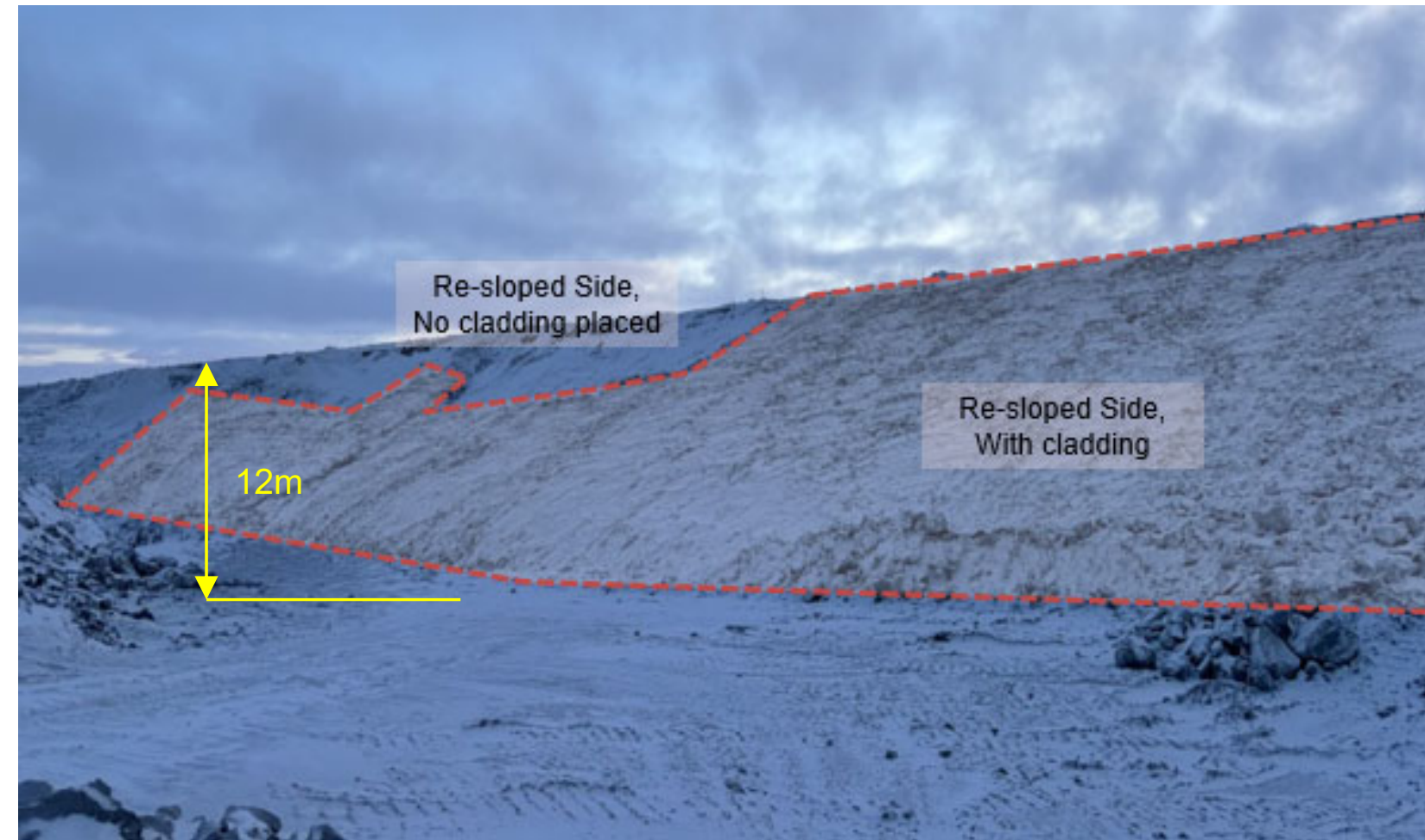
Photos from Sept 1st, 2023

The southern wall of the pit is formed in overburden material presented by fine sand (up to 80%) with well-graded gravel (up to 15%) and boulders (up to 5%). The slopes are oversteepened. Series erosion paths were formed along the wall. The fine sand erosion (fans) are observed at the slope toe. Note that these portions of the pit slopes were further cut back at the start of 2024.



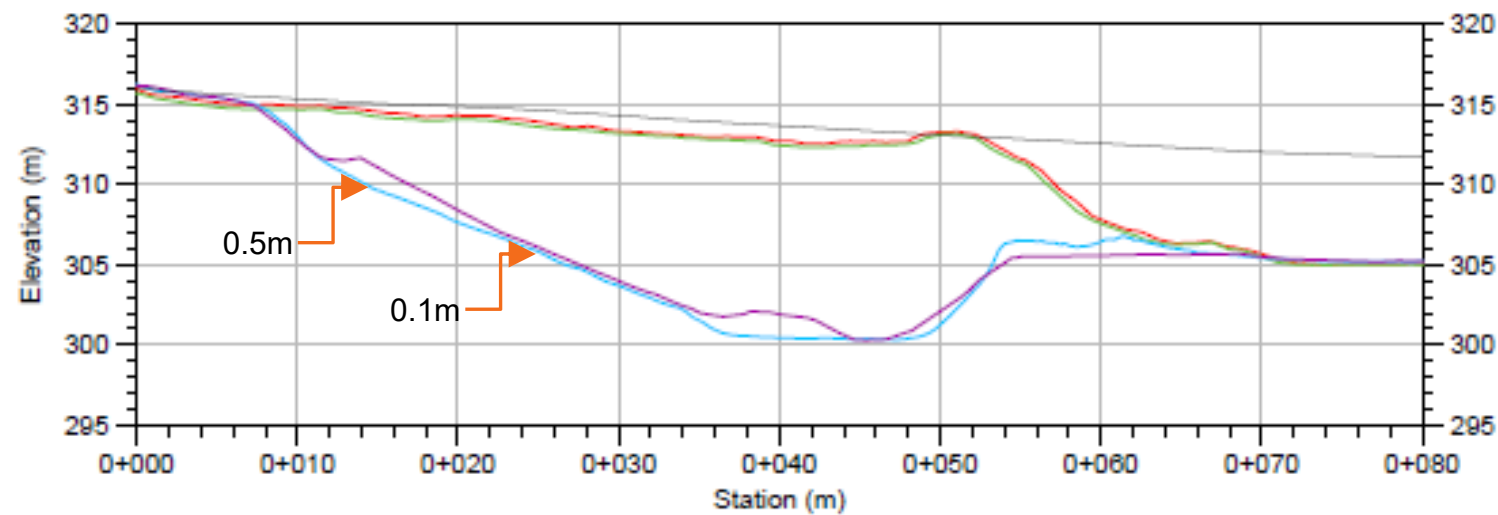
Photos from Jan 18th, 2024

SSW wall of the Echo Pit

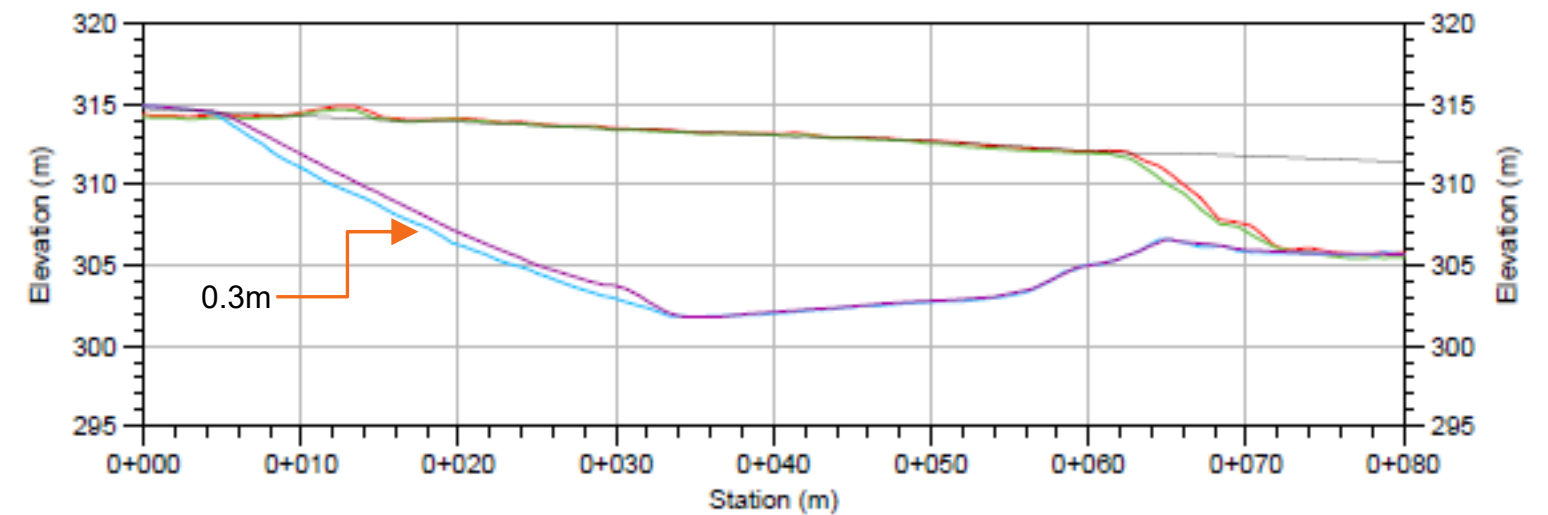


In January 2024, the SSW wall was re-sloped, and rock cladding placement was initiated (Photos were taken by SRK on Jan 18th, 2024).

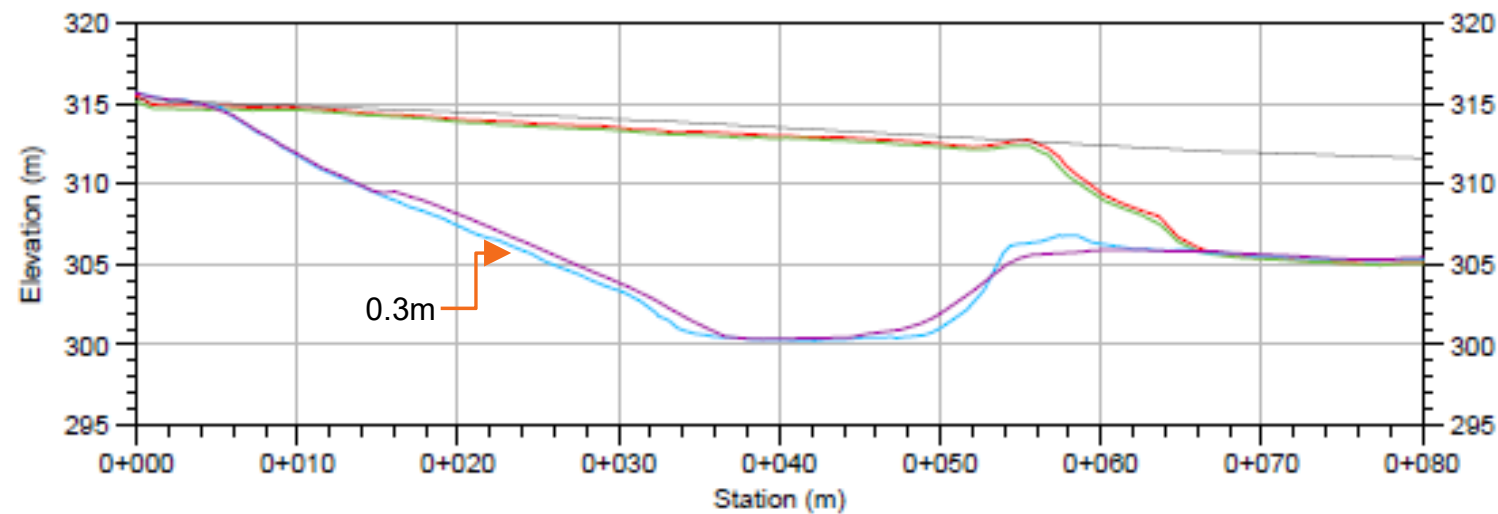
Cladding Thickness (as of Jan 07th, 2024)



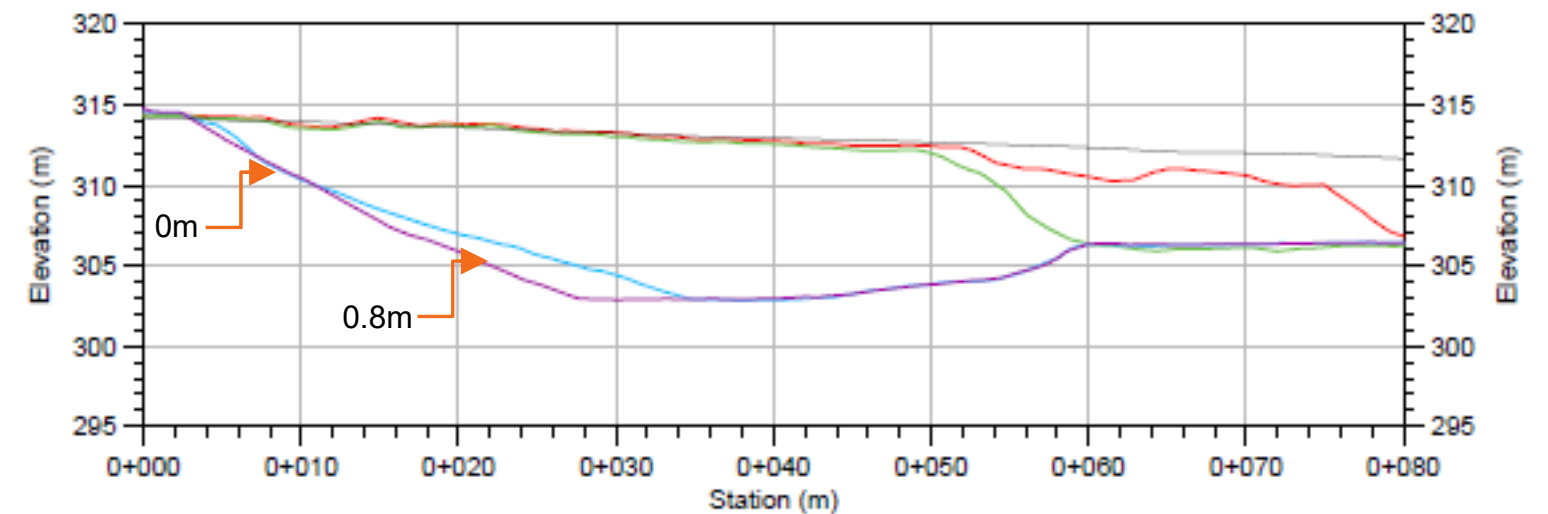
E



F



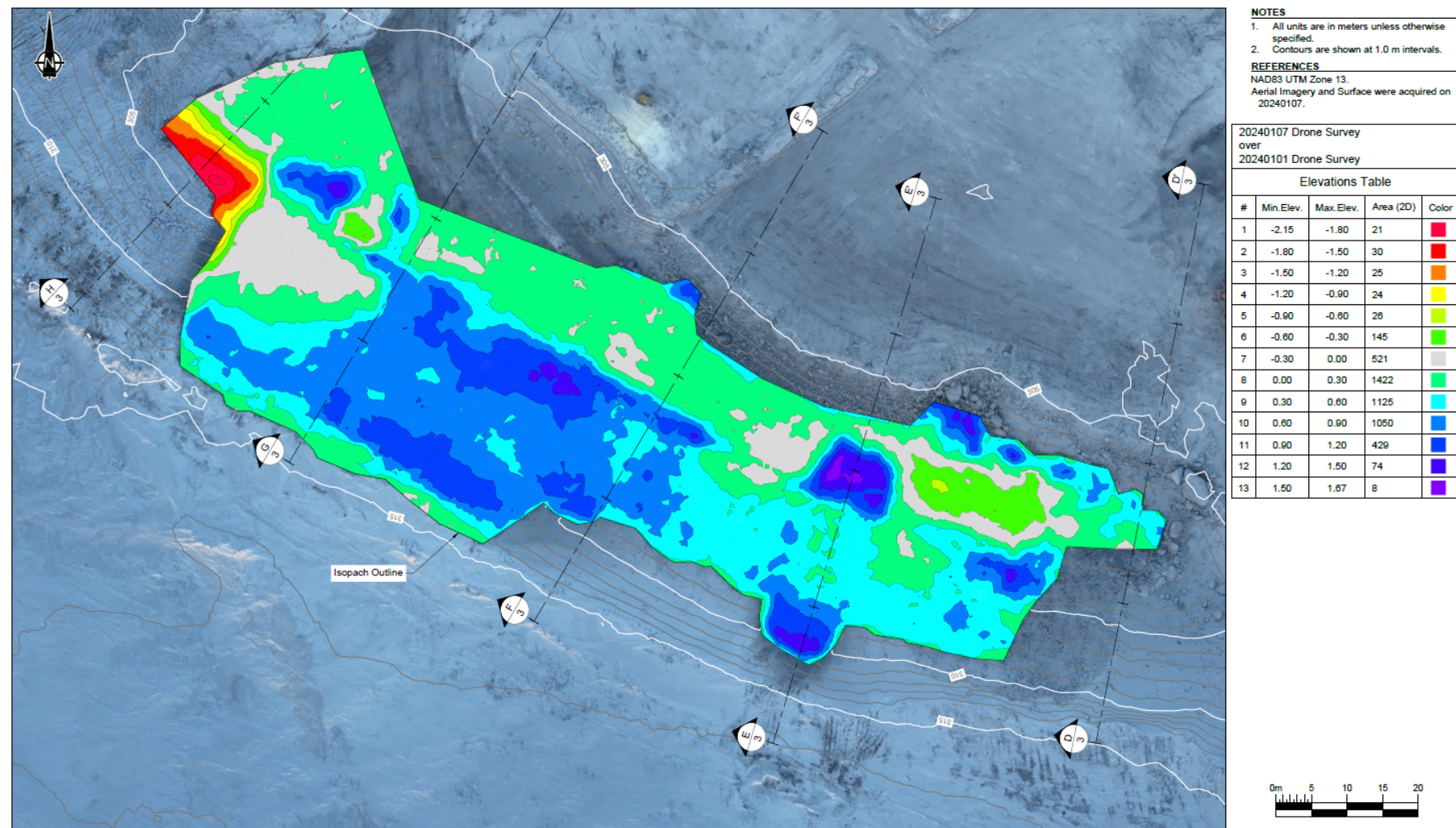
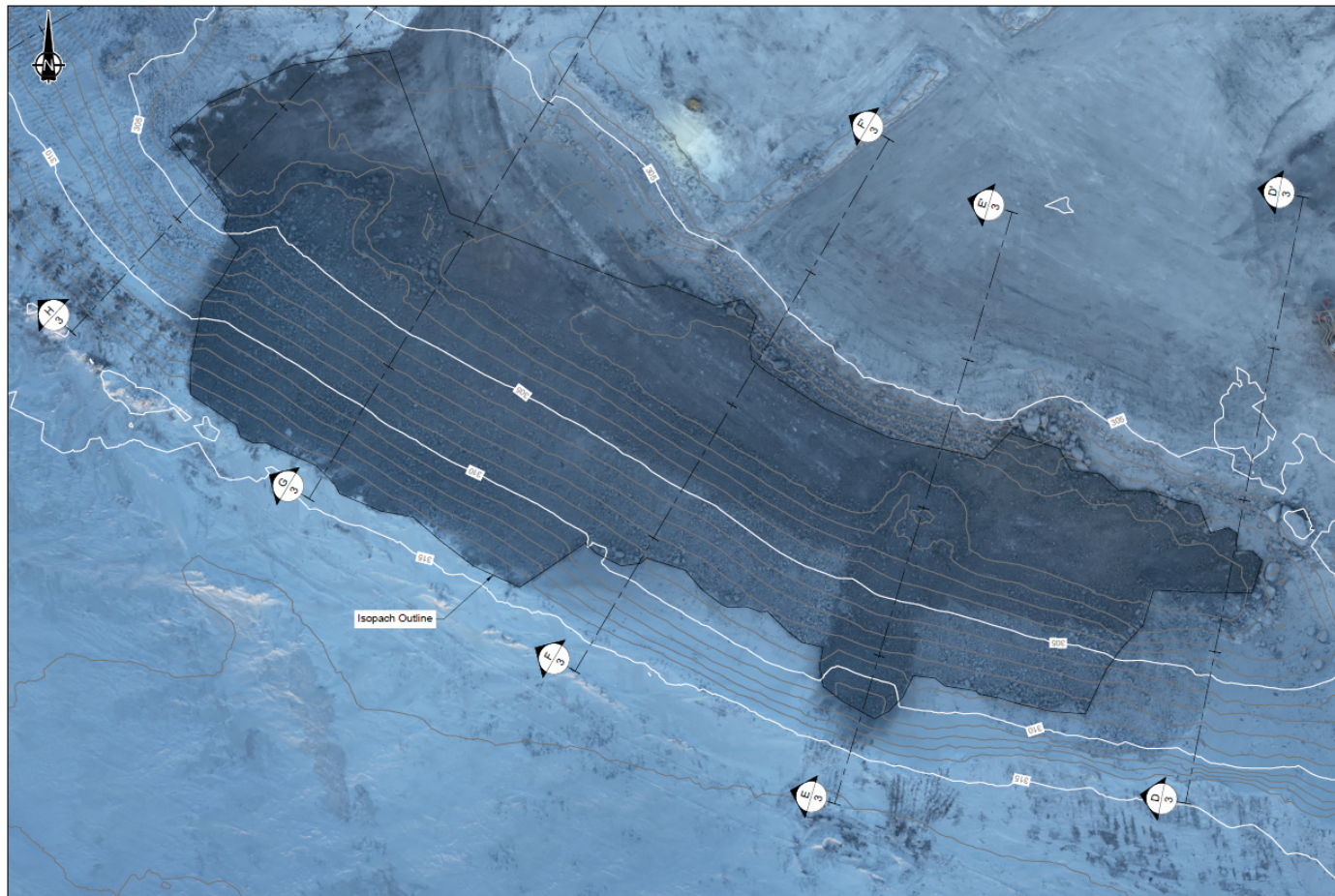
F



G

Cladding Isopach

As of Jan. 7th, 2024, the thickness of the cladding has varied from 0 m to 0.8 m (with average 0.3m)



Appendix D Airstrip: Southeastern End Extension

Back River Project Airstrip Extension

Observations and notes for site consideration

Plan View (July 08, 2023)



*A drone survey from July 08, 2023
Provided by B2Gold

Plan View (August 10, 2023)



*A drone survey from August 10, 2023
Provided by B2Gold

Airstrip Extension



*Photos were done by SRK on August 31st, 2023

Airstrip Extension

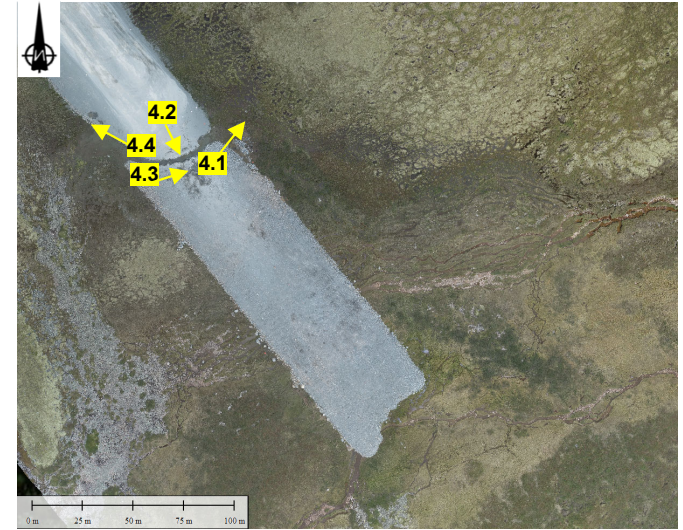
4.1



4.2



4.3



4.4



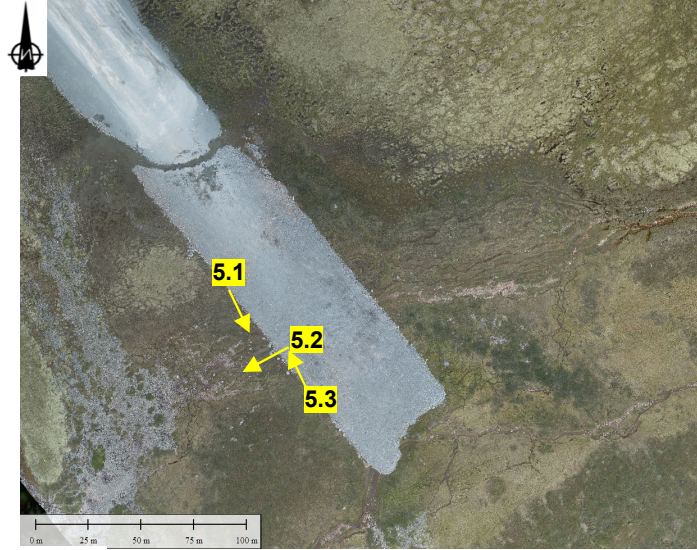
*Photos were done by SRK on August 31st, 2023

Airstrip Extension

5.1



5.2



5.3

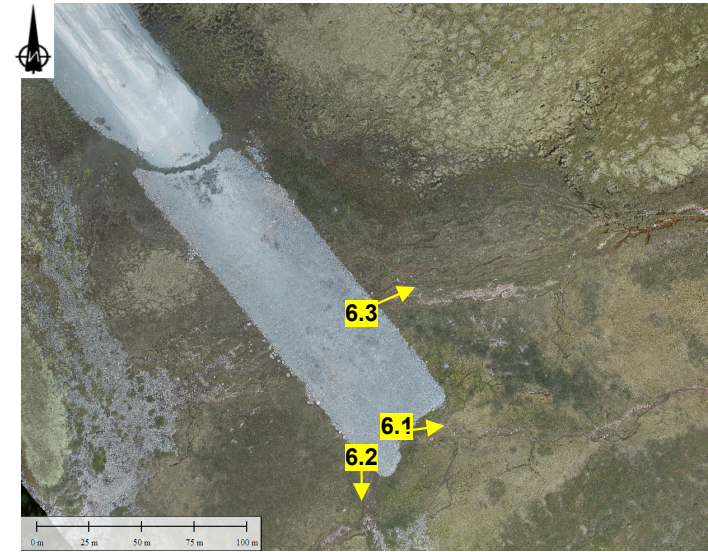


Airstrip Extension (SE End)

6.1



6.2



6.3



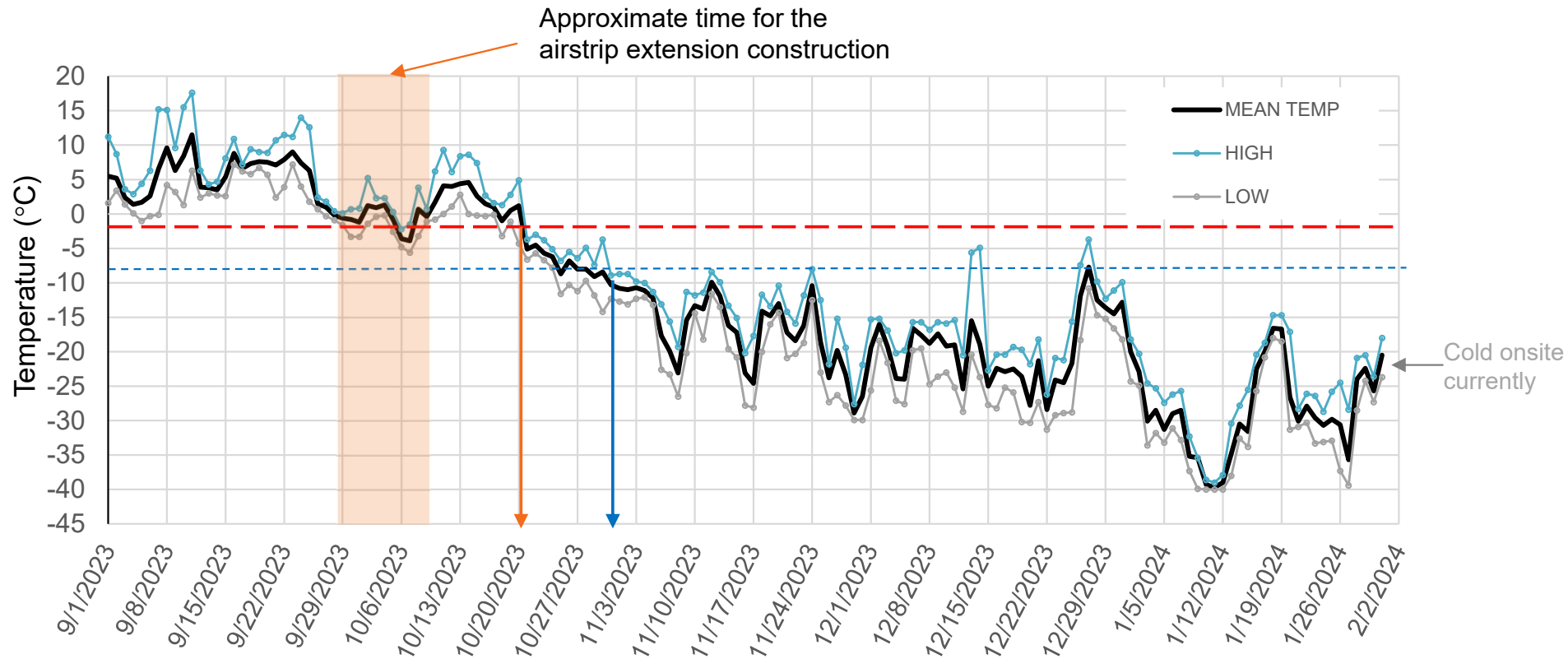
*Photos were done by SRK on August 31st, 2023

Plan View (October 11, 2023)



*A drone survey from October 11, 2023
Provided by B2Gold

Ambient Air Temperature on Site



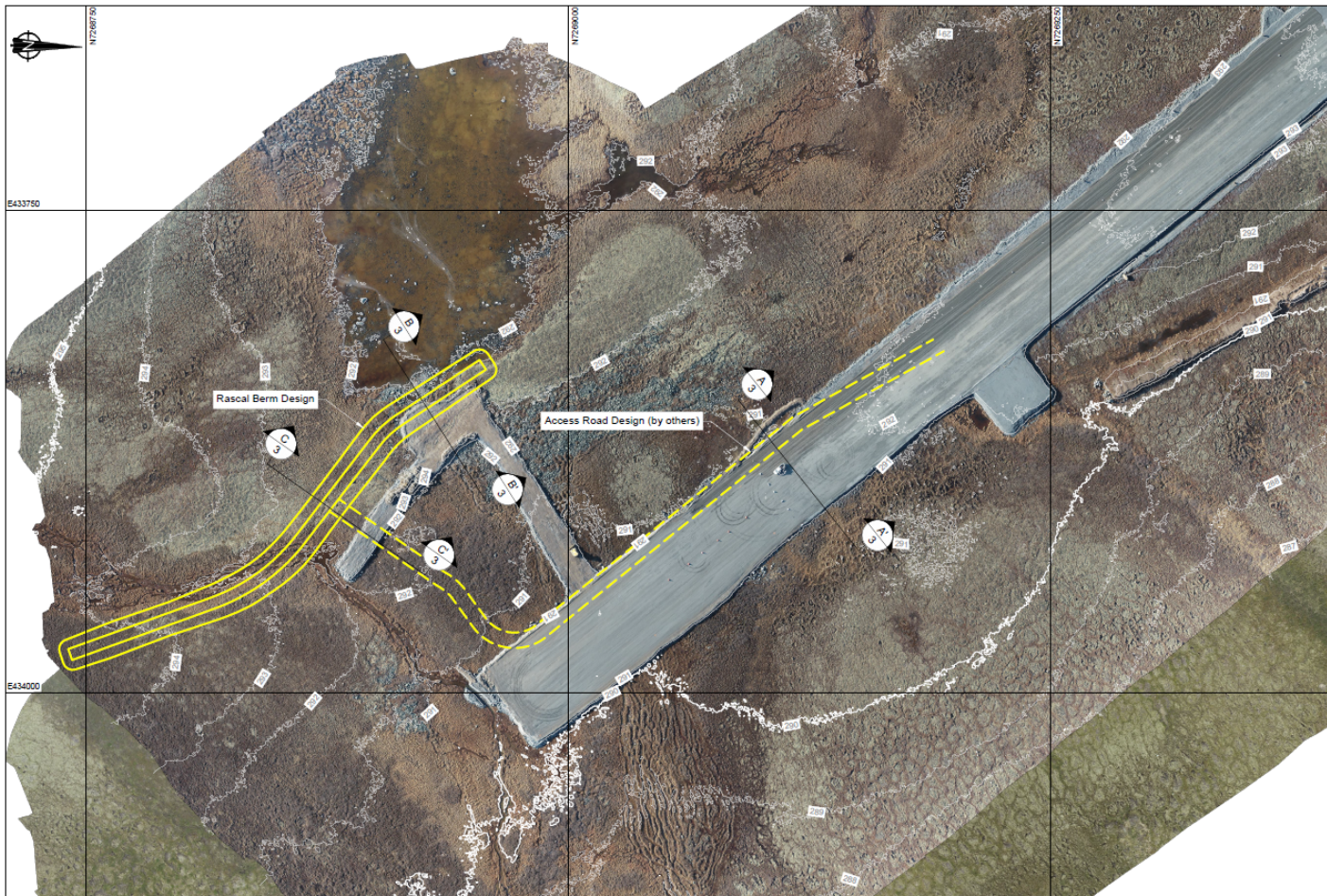
Reference: [Goose Lake, NU \(lw-app.com\)](http://lw-app.com)

Plan View (November 06, 2023)



*A drone survey from November 06, 2023
Provided by B2Gold

Airstrip Extension (SRK Design)



NOTES

1. All units are in meters unless otherwise specified.
2. Contours are shown at 1.0 m intervals.

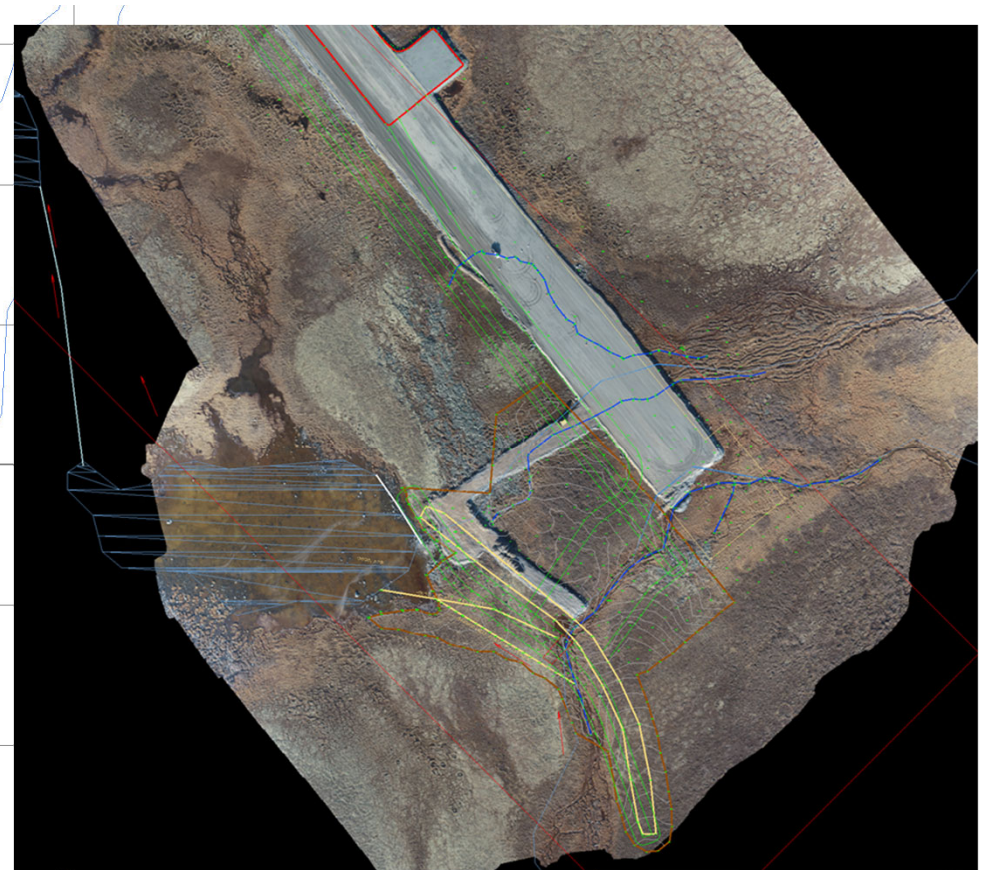
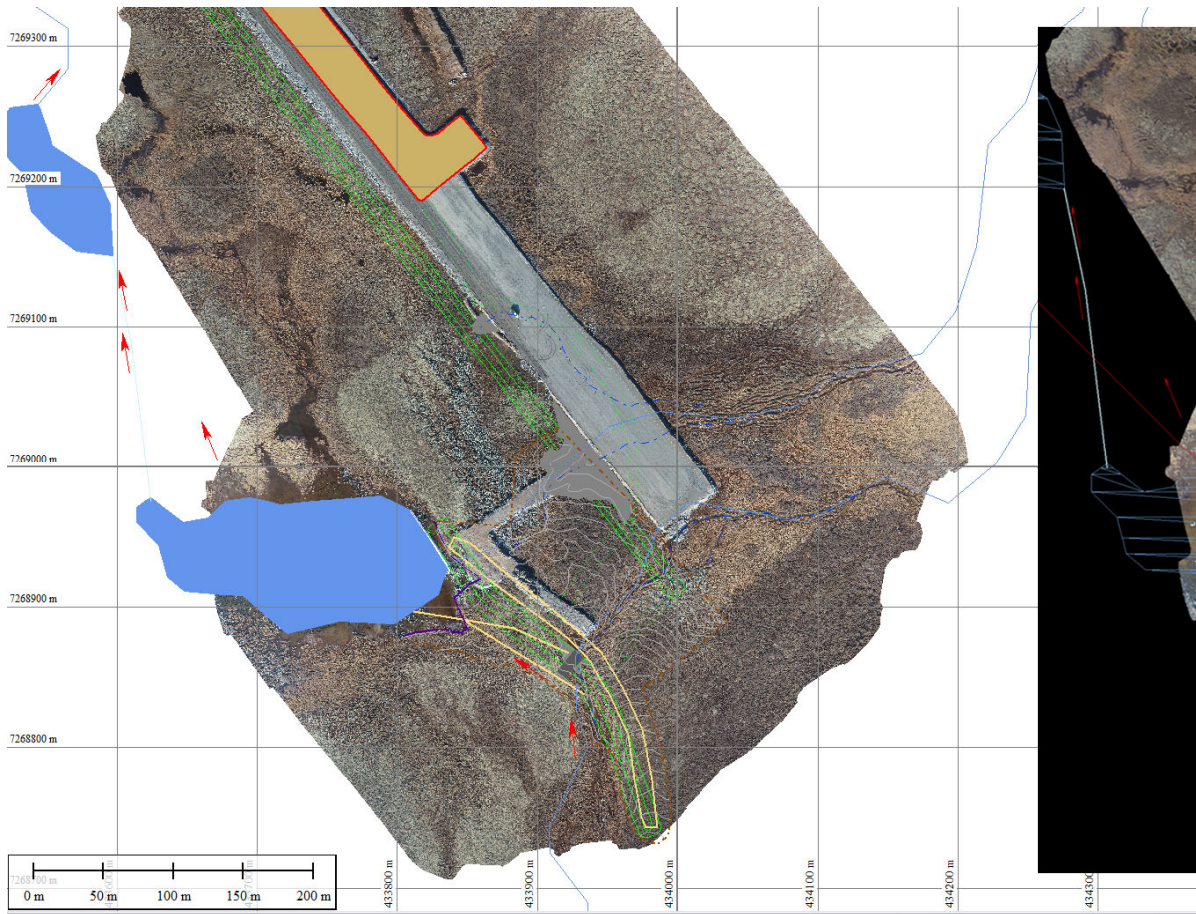
REFERENCES

NAD83 UTM Zone 13.
Aerial Imagery is derived from 20230708 and 20231011 Drone Surveys.
Surface is derived from 20231011 Drone Survey.

Airstrip Extension (B2Gold Design)

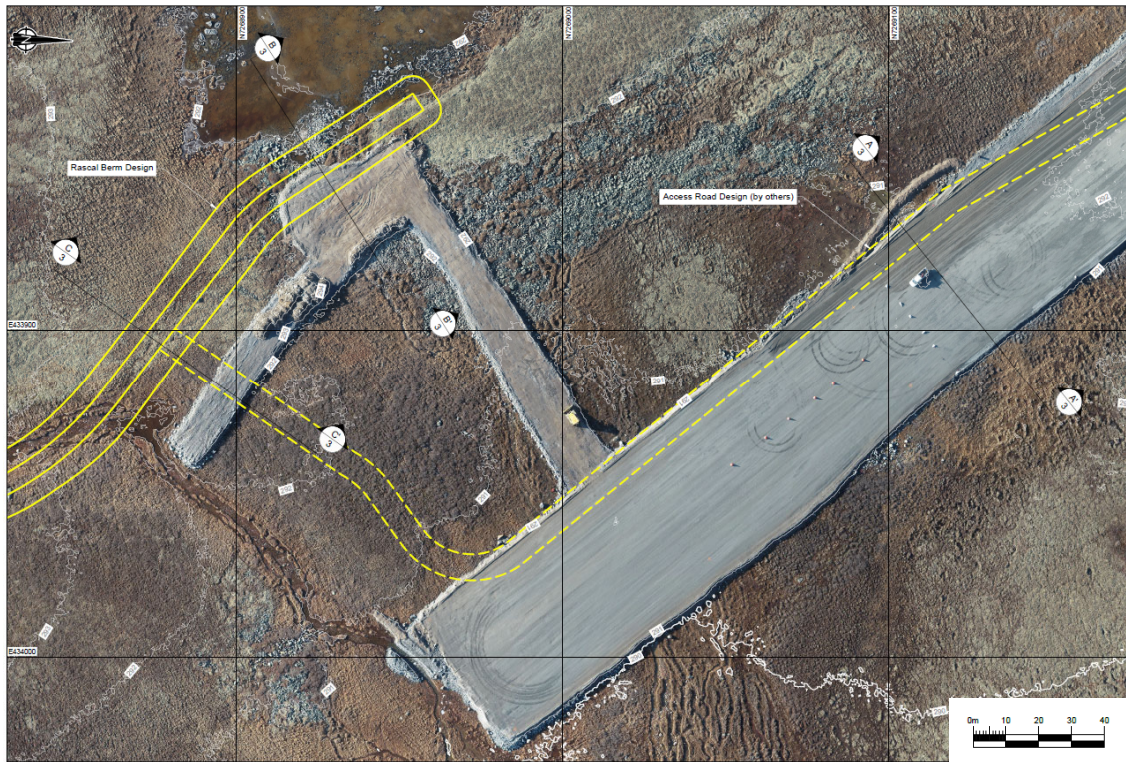
Global Mapper Model

Provided by B2Gold (Adam S.)



Draft notes – for discussion

Rascal Diversion: Original Design vs. Current Condition



NOTES

1. All units are in meters unless otherwise specified.
2. Contours are shown at 1.0 m intervals.

REFERENCES

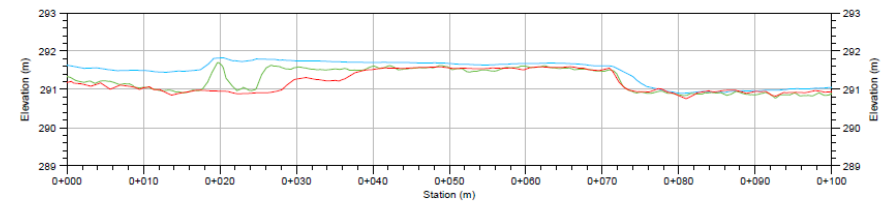
NAD83 UTM Zone 13.
Aerial Imagery is derived from 20230708 and
20231011 Drone Surveys.
Surface is derived from 20231011 Drone
Survey.

LEGEND

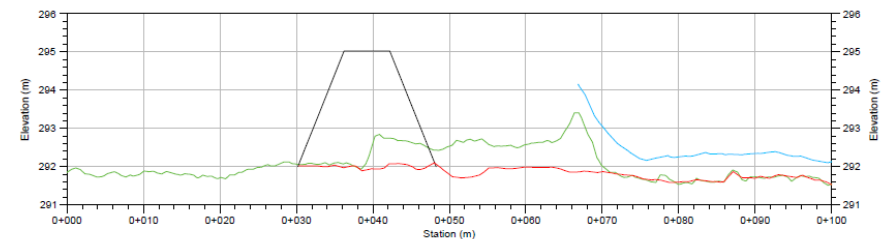
- Berm Design from 20200818
- 20230810 Drone Survey
- 20231011 Drone Survey
- 20231106 Drone Survey

NOTES

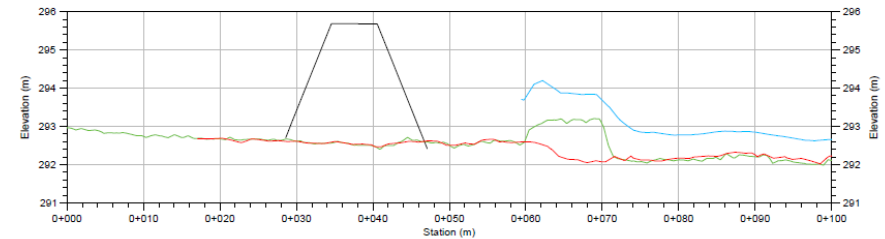
1. All units are in meters unless otherwise specified.



A Section through Airstrip



B Section through Rascal Berm



C Section through Rascal Berm