

KIYUK LAKE PROJECT

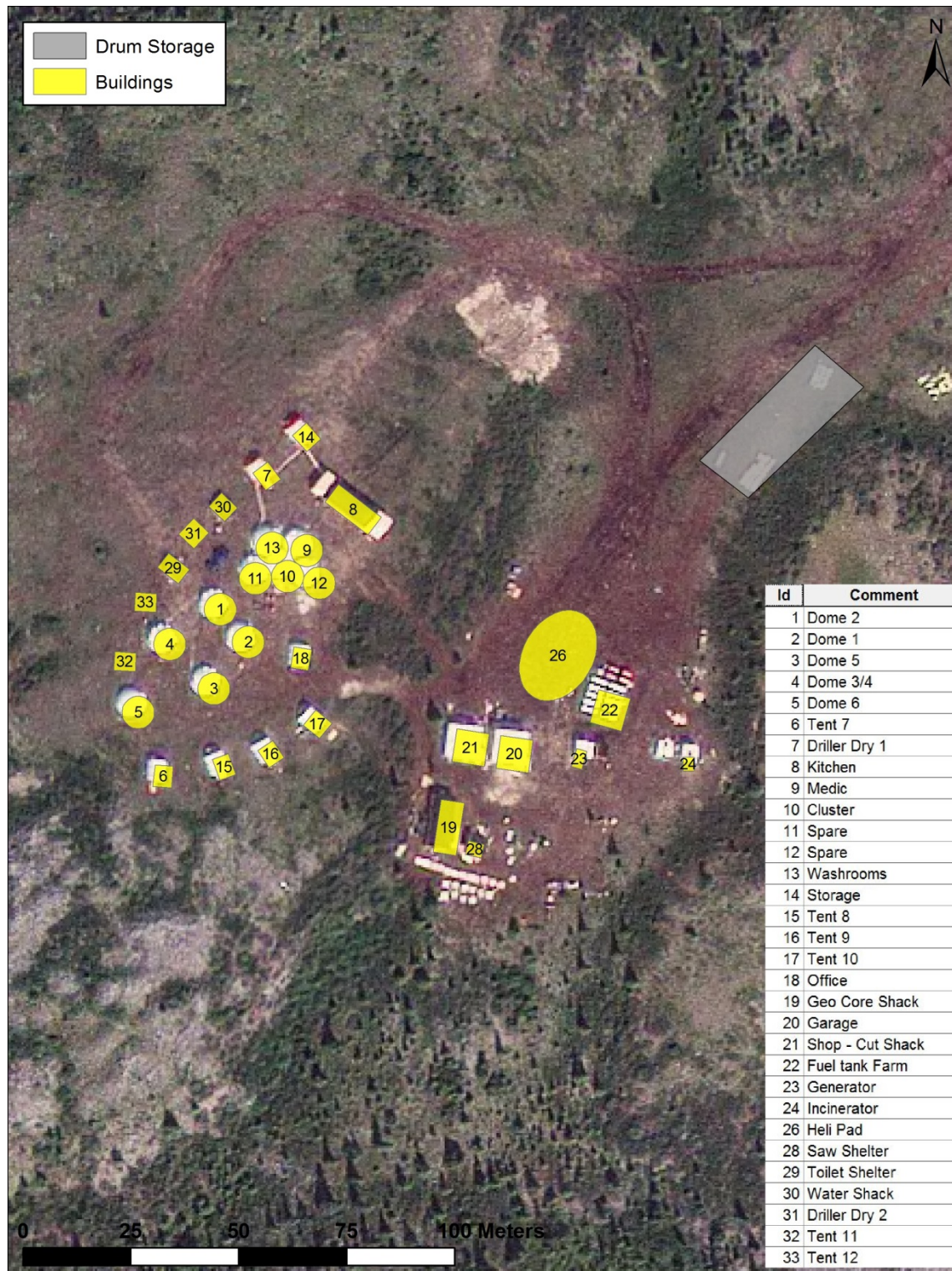


Figure 1: Kiyuk Lake camp infrastructure.

FUEL

Type	Size	Quantity
Diesel	205 L/4500 L	51 drums/4 tanks
Jet B	205 L/4500 L	42 drums/8 tanks
Gasoline	205 L/2200 L	1 drums/2 tanks
Gasoline	22/5 L	6 Jerry cans
Propane	100 lb 25 lb	30 cylinders 4 tanks

EQUIPMENT

Type	Description	Use
Drill	2 x LF-70 or equivalent heli-portable drill	Core drilling
Generator	2 x Heli portable generators	Supply power to drill and pump
Pump	3 x Water pump	Supply water to the drill and camp
Generator	2 x 40kW and 5kW	Power for camp and back up
Incinerator	Inciner8 Model 200A	Burning combustible waste in camp
Excavator	315 CL Caterpillar	Construct future airstrip
Tip-trailer		Move material in air strip construction

TRANSPORTATION

Type	Description	Use
Helicopter	A-Star, Bell Jet Ranger or Long Ranger, Hughes 500D	Move drill, transport crews and supplies
Snow machines	3 Bravos 2 Skidoo Scandics	Transport of crews between drill sites in winter and monitor water lines
Fixed wing aircraft	Fuel tanker Fixed-wing aircraft (e.g. Beaver, Otter, Cessna 206, HS 748, ATR)	Transportation of bulk fuel Crew and supply transport
ATV	2 Honda Trax	In camp use only

Summer 2013 Personnel

Type	Quantity
Cook	2
Camp Manager	1
Medic	1
Drillers and Drill Helpers	4
Project Geologist	1
Geologist	1
Technician	1
Pad Builder	2
Total	13