

**A photo of the beautiful views of the landscape the terrestrial environment monitoring team observed while completing the cliff nesting raptor occupancy and productivity surveys in 2017.**

Monitoring for dustfall from the Project is an important aspect of the terrestrial environment monitoring programs. Adaptive mitigation measures have been installed to further minimize the total amount of dustfall resulting from Project activities, and to minimize potential effects of dustfall from the Project on the environment.



**Dust cloud blowing off the ore stacker at Milne Inlet Port, November 21, 2017**



In 2017, the total amount of dustfall was reduced from 2016 as a result of the application of these additional mitigation measures.

## Freshwater Monitoring

Annual freshet water quality monitoring occurs in accordance to Nunavut Water Board Licence and the Project Certificate. Freshet monitoring occurs at four monitoring locations at the Mine Site, along the Tote Road at fisheries crossings, and at Milne Port.



Tote Road Freshet Monitoring					
Date/Time:		Project Related: Yes <input type="checkbox"/>		No <input type="checkbox"/>	
Culvert #		Initial Samples taken Yes <input type="checkbox"/>		No <input type="checkbox"/> If no,why?	
Samplers:		Follow up samples? Yes <input type="checkbox"/>		No <input type="checkbox"/> If no,Why?	
Pictures Taken: Yes <input type="checkbox"/>		No <input type="checkbox"/>		Number of Pictures #	
YSI Model: YSI Pro DSS <input type="checkbox"/>		YSI 6820 <input type="checkbox"/>		6000QS <input type="checkbox"/>	
YSI Calibrated Yes <input type="checkbox"/>		No <input type="checkbox"/>			
Sedimentation Controls Implemented		Silt Fences <input type="checkbox"/>		Silt Curtains <input type="checkbox"/>	
Fisheries Regulated: Yes <input type="checkbox"/> No <input type="checkbox"/>		Rip-rap <input type="checkbox"/>		Geotextile <input type="checkbox"/>	
				Spring Berm <input type="checkbox"/>	
Water Level: Dry <input type="checkbox"/>		Stagnant <input type="checkbox"/>		Low <input type="checkbox"/>	
				Moderate <input type="checkbox"/>	
				High <input type="checkbox"/>	
Water Quality:		Turbid <input type="checkbox"/>		Clear <input type="checkbox"/>	
				Sheen <input type="checkbox"/>	
YSI Measurements					
Location	pH	Temp. (°C)	Conductivity (µs/cm)	Turbidity (NTU)	DO%
Notes:					
Flow taken: Yes <input type="checkbox"/> No <input type="checkbox"/>		Tote Road Freshet Monitoring Inspection Sheet			
Velocity:					

In the event of required mitigation during freshet, Baffinland undertakes immediate corrective actions in response to reported sediment releases including silt fence and spring berm installation, check dam construction and operation, armouring of ditches, banks, swales and road embankments near water bodies, and redirection of sediment and turbid waters away from fish habitat.



May 16, 2017 - Construction of check dam north of culvert CV-186 (Sheardown Lake Tributary)





Adaptive mitigation measures such as the installation of silt fences are executed as required during freshet to manage the effects of spring melt on Project infrastructure.

May 26, 2017 – Silt fences installed to contain sediment released as a result of Milne Port East Sedimentation Pond (MP-05) overflow on May 25, 2017

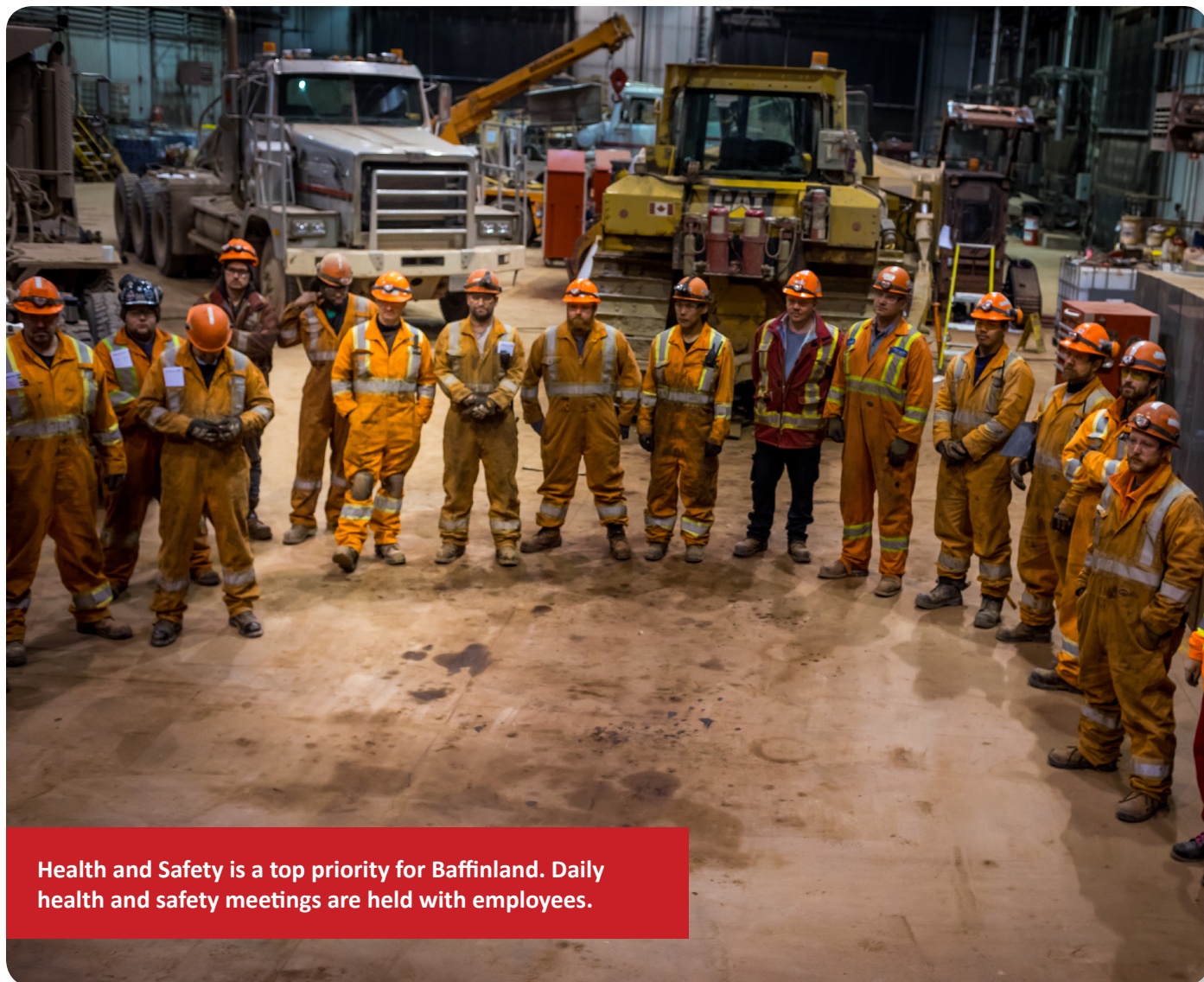


Aerial view of controlled discharge from Milne Port East Sedimentation Pond during the 2017 freshet.



## People at Work

Baffinland employees continue to be our most important resource and their safety our top priority. In 2017 Baffinland employed 892 individuals across the corporate and operations offices. This has resulted in a greater number of local individuals hired by Baffinland, including Inuit community members that live by and work for the Project.



**Health and Safety is a top priority for Baffinland. Daily health and safety meetings are held with employees.**

In 2017, Baffinland continued to struggle with the retention of Inuit employees and continues to fall short of the Minimum Employment Goal (MIEG) of 25%. A number of efforts were made in 2017 with the aim of improving the overall numbers of Inuit employed by the Project.

To overcome ongoing challenges with recruitment and retention of Inuit employees, Baffinland supports and implements a number of social initiatives including enhancing procurement and contracting opportunities, improving Inuit retention strategies and encouraging and implement education and training opportunities for North Baffin Inuit.





Baffinland presented 63 laptops to high school graduates in 2017. Donating laptops to high school graduates is one of the ways Baffinland encourages students to further their educational pursuits.

Additional information related to education and training and employment initiatives implemented by Baffinland in 2017 can be found in PC Conditions 135 to 141.

## **Inuit and Stakeholder Engagement**

Baffinland's approach to stakeholder engagement emphasizes the importance of informing stakeholders, establishing effective communication strategies, and collecting feedback from stakeholders on potential issues and concerns.



During 2017, Baffinland completed a number of engagement activities, which included:

- Engaging with community members through Baffinland Community Liaison Officers stationed in each of the five (5) North Baffin communities;
- Hosting public meetings and open houses;
- Conducting community and employee surveys;
- Participating in multi-stakeholder forums (e.g. Working Groups);
- Holding focus groups, workshops and meetings with individual community groups and hamlet Councils;
- Hosting site meetings for interested observers; and
- Distributing Project-related information through websites, newsletters, advertisements and other means.





## Working Groups

Baffinland also engages with stakeholders through regular meetings with the Marine Environment Working Group, the Terrestrial Environment Working Group and the Socio-Economic Monitoring Working Group.



MEWG Meeting held in 2017 (Ottawa, Ontario) Pond (MP-05) overflow on May 25, 2017

The Working Groups include representatives from Baffinland, the Government of Nunavut, the Qikiqtani Inuit Association, Environment and Climate Change Canada, Fisheries and Oceans Canada, the Mittimatalik Hunters and Trappers Organization, Parks Canada and Makivik Corporation. Oceans North and the World Wildlife Fund also attend Working Group Meetings as observers.

### Consultation on the Phase 2 Expansion Project

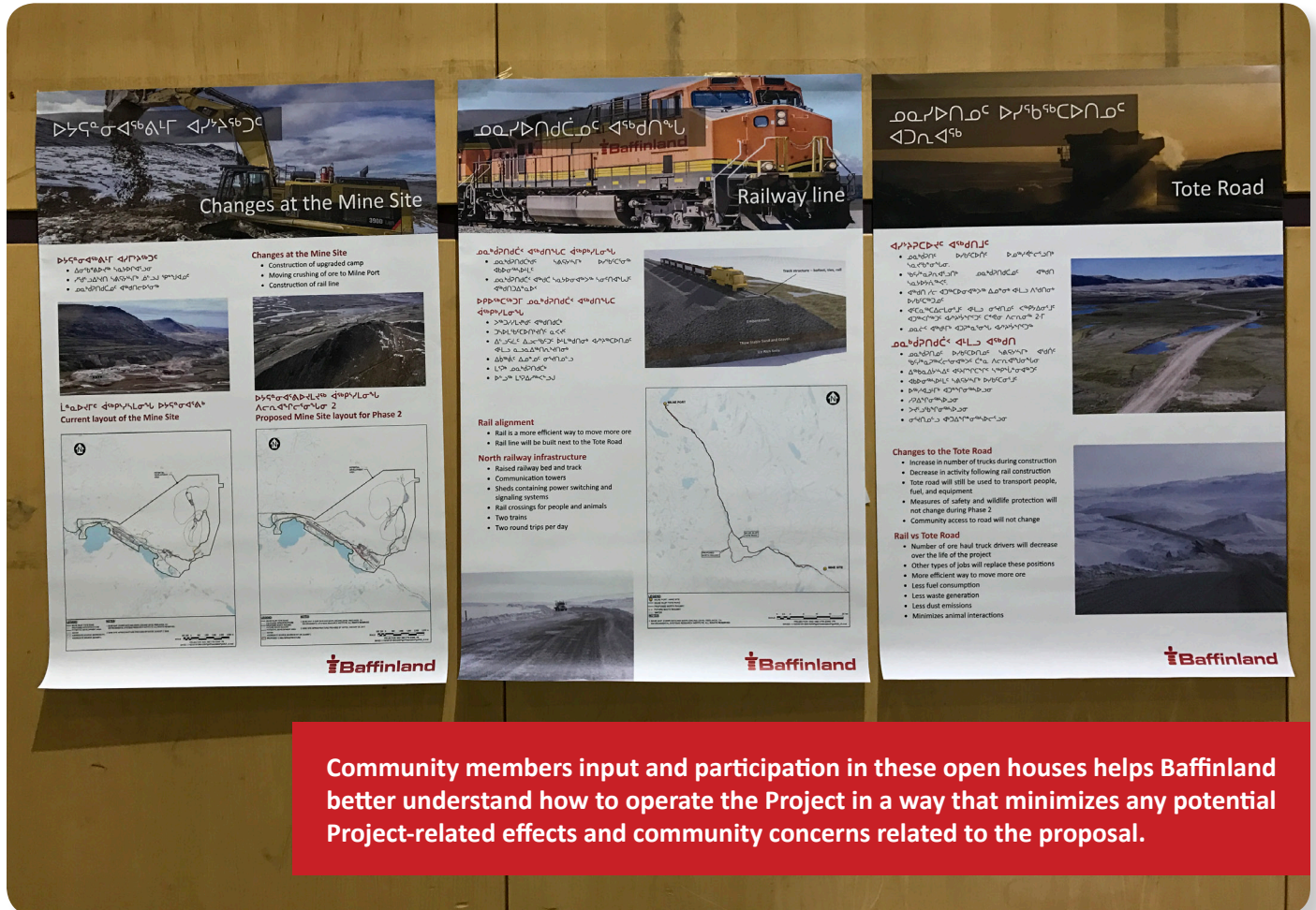
During 2017, Baffinland met with community group meetings in each of the five (5) North Baffin communities – Arctic Bay, Clyde River, Hall Beach, Igloolik and Pond Inlet – to provide information about and receive feedback on the proposal for the Phase 2 Expansion Project.



**Community members input and participation in these open houses helps Baffinland better understand how to operate the Project in a way that minimizes any potential Project-related effects and community concerns related to the proposal.**



In 2017, as part of consultation on the Phase 2 Expansion Proposal Project, Baffinland has shared information related to the design of new infrastructure associated with the proposal. Consultation will continue into 2018, as Baffinland proceeds with obtaining environmental approvals for the Proposal.



Community members input and participation in these open houses helps Baffinland better understand how to operate the Project in a way that minimizes any potential Project-related effects and community concerns related to the proposal.