

ᐱᐣᐣᐣ 2022

▷σ<sup>b</sup>̂c◁◁ CΔj<sup>q</sup>u:

[illegible]

ΛC<sub>2</sub>Δ<sup>a</sup>Υ<sup>b</sup>Γ<sup>c</sup>:

മുൻപ്  $\Lambda$  ന്റെ  $\mathbb{Q}$ - $\mathbb{R}$  നിലനിൽപ്പ്

Λαλτςϑ ρλσς:

የጥያቄው ስራ (የጥያቄው ስራ ለመፍፀም), ወደፊት

ΛCRLD<sup>96</sup>:

2275 ኖታሪያል ማህበራዊ ምርጫ ምክር ቤቱ ለጥቅምት 300  
 ለጥቅምት 300  
 L6H 0C3

ለፍጥነት ምክንያት ምረቃውን ለመረጥ ምርጫውን ለመጀመር ይገባል፡፡

LΔΓ<sup>a</sup> ⊃ Δ<sup>c</sup>-H▷◁ΔΔ<sup>c</sup>,  
 Δ<sup>b</sup>Γ<sup>a</sup>Δ<sup>b</sup>⊂ Δ<sup>c</sup>Σ<sup>a</sup>Σ, Γ▷Δ<sup>c</sup>Δ<sup>c</sup>Δ<sup>c</sup>Δ<sup>c</sup>Δ<sup>c</sup>Δ<sup>c</sup> Δ<sup>c</sup>Δ<sup>c</sup>Δ<sup>c</sup>Δ<sup>c</sup>  
 (416) 364-8820 Δ<sup>c</sup>Δ<sup>c</sup>Δ<sup>c</sup> 5050

▷<sup>9</sup>ḅḭ▷<sup>10</sup>ḥ:

ፍፅረውኑ፡

[illegible]

▷<sup>ᶜ</sup>ᵇᶜ▷<sup>ᶜ</sup>:

(867) 983-4607; [cbarker@nirb.ca](mailto:cbarker@nirb.ca)  
(867) 983-4609; [gdaoust@nirb.ca](mailto:gdaoust@nirb.ca)

**፪፻፳፱ ዓ.ም ጥቅምት ፲፭ ቀን**

ᐱᐣᐣ 23-25, 2022

ዎሃርጌ ክልሉ ልማትና ጥበቃ ሚኒስትር፡ ጳጉሜ 13-16, 2022

$$\triangleright \sigma^b \subset \triangleright^{\mathfrak{b}} \supset^{\mathfrak{b}}:$$
$$d_L < d \triangleleft^L L \cap \triangleright^L C \triangleright$$

$\nabla^{\mu} \tilde{g}_{\mu\nu} = 0$

$$d_L < d \triangleleft^L L \cap \triangleright^L C \triangleright$$

## ኖርማቲቭ

1	ለጥናት ዓላማ ..... 4
1.1	ጋራ ለሰነድ ለሰነድ ለሰነድ ለሰነድ ..... 4
2	ክፍል ለሰነድ ለሰነድ ለሰነድ ለሰነድ ..... 5
3	ፈቃድ ለሰነድ ለሰነድ ለሰነድ ለሰነድ ..... 7
4	ፈቃድ ለሰነድ ለሰነድ ለሰነድ ለሰነድ ..... 7
4.1	የጥናት ለሰነድ ለሰነድ ለሰነድ ለሰነድ ..... 9
4.1.1	የጥናት ለሰነድ ለሰነድ ለሰነድ ለሰነድ ..... 9
4.1.2	የጥናት ለሰነድ ለሰነድ ለሰነድ ለሰነድ ..... 18
4.1.3	የጥናት ለሰነድ ለሰነድ ለሰነድ ለሰነድ ..... 24
4.2	የጥናት ለሰነድ ለሰነድ ለሰነድ ለሰነድ ..... 40
5	የጥናት ለሰነድ ለሰነድ ለሰነድ ለሰነድ ..... 42

## ፈቃድ ለሰነድ

ፈቃድ ለሰነድ 1: ለሰነድ ለሰነድ ለሰነድ ለሰነድ ..... 5
ፈቃድ ለሰነድ 2: ለሰነድ ለሰነድ ለሰነድ ለሰነድ ..... 6

## የጥናት ለሰነድ

የጥናት ለሰነድ 1: የጥናት ለሰነድ ለሰነድ ለሰነድ ለሰነድ ..... 8
የጥናት ለሰነድ 2: የጥናት ለሰነድ ለሰነድ ለሰነድ ለሰነድ ..... 9
የጥናት ለሰነድ 3: የጥናት ለሰነድ ለሰነድ ለሰነድ ለሰነድ ..... 10
የጥናት ለሰነድ 4: የጥናት ለሰነድ ለሰነድ ለሰነድ ለሰነድ ..... 10
የጥናት ለሰነድ 5: የጥናት ለሰነድ ለሰነድ ለሰነድ ለሰነድ ..... 11
የጥናት ለሰነድ 6: የጥናት ለሰነድ ለሰነድ ለሰነድ ለሰነድ ..... 12
የጥናት ለሰነድ 7: የጥናት ለሰነድ ለሰነድ ለሰነድ ለሰነድ ..... 12
የጥናት ለሰነድ 8: የጥናት ለሰነድ ለሰነድ ለሰነድ ለሰነድ ..... 13
የጥናት ለሰነድ 9: የጥናት ለሰነድ ለሰነድ ለሰነድ ለሰነድ ..... 14
የጥናት ለሰነድ 10: የጥናት ለሰነድ ለሰነድ ለሰነድ ለሰነድ ..... 15
የጥናት ለሰነድ 11: የጥናት ለሰነድ ለሰነድ ለሰነድ ለሰነድ ..... 15
የጥናት ለሰነድ 12: የጥናት ለሰነድ ለሰነድ ለሰነድ ለሰነድ ..... 16
የጥናት ለሰነድ 13: የጥናት ለሰነድ ለሰነድ ለሰነድ ለሰነድ ..... 17
የጥናት ለሰነድ 14: የጥናት ለሰነድ ለሰነድ ለሰነድ ለሰነድ ..... 18
የጥናት ለሰነድ 15: የጥናት ለሰነድ ለሰነድ ለሰነድ ለሰነድ ..... 19
የጥናት ለሰነድ 16: የጥናት ለሰነድ ለሰነድ ለሰነድ ለሰነድ ..... 19



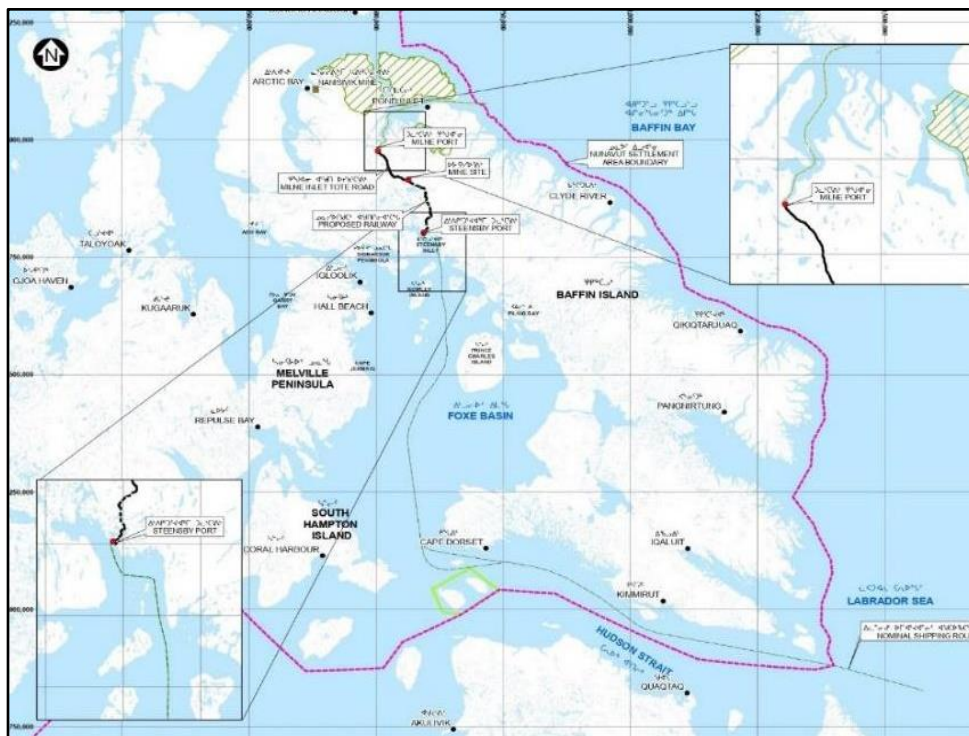




2 “ክፍል ጋላጥጥረኛ ወይም ለጥራታቸው ላይ ልዩ ጥረት

உதிரை லுள்ள பிள்ளை

በበዓሉ ምዕራባዊ ክፍል ውስጥ 150 ያላን ሰራተኛዎች ለሰራተኛዎች ልምድ ለማስቀመጥ በጥራት 2012-13 ለሰራተኛዎች ለሰራተኛዎች ልምድ ለማስቀመጥ በጥራት ያላን ሰራተኛዎች ለሰራተኛዎች ልምድ ለማስቀመጥ በጥራት

[illegible]

ደብዳቤ 1: ለጥሪዎቼ ደብዳቤዎች





$\Delta \gamma^a \sigma \Delta \gamma^b \delta^a \sigma$  ( $\Delta \gamma^a \gamma \Delta \gamma^b$  2)  $L d \sigma^a \gamma$   $C d \gamma \Delta \gamma^b \gamma$ :

- [illegible]



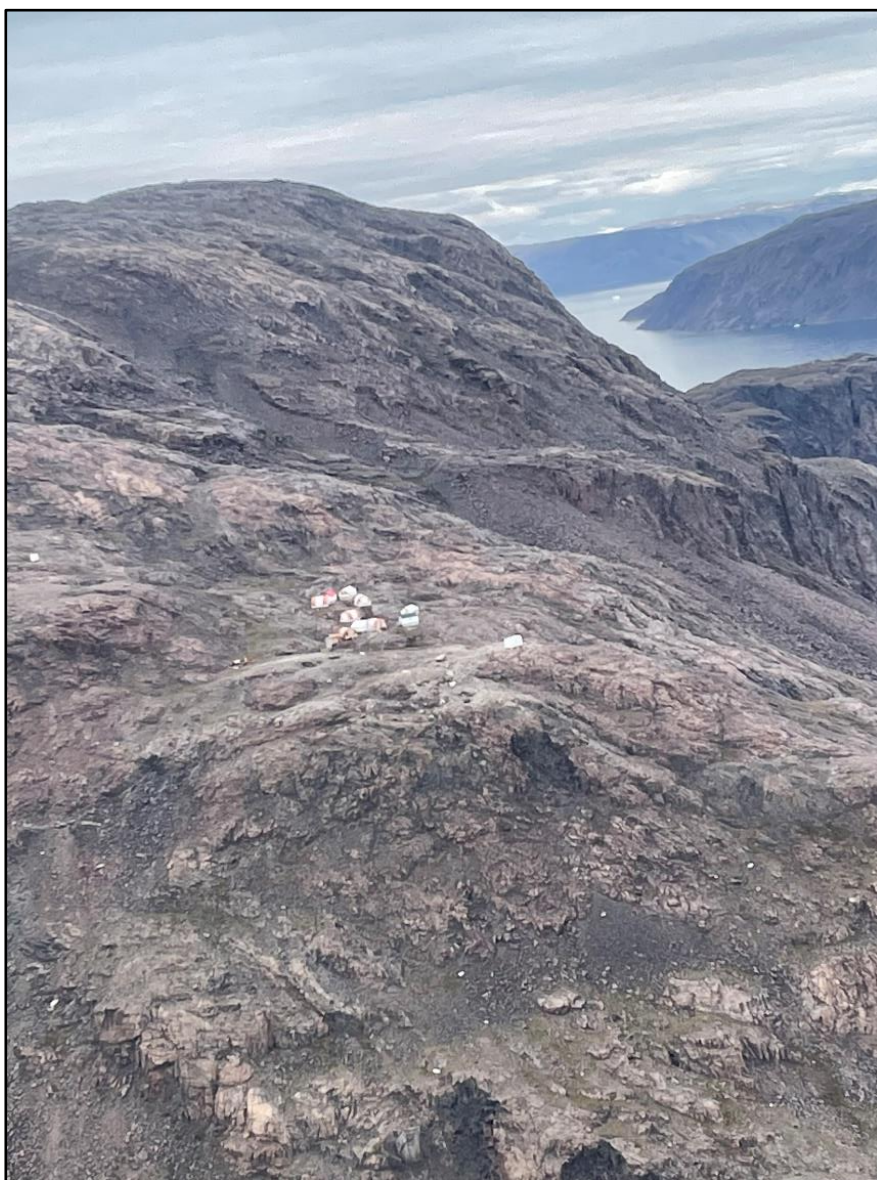
ᐅᐱᐱᐱᐱᐱᐱ 1: ᐱᐱᐱᐱᐱᐱ ᐅᐱᐱᐱᐱᐱ ᐱᐱᐱᐱᐱᐱ ᐱᐱᐱᐱᐱᐱ, ᐱᐱᐱ 2022









[illegible]

መጋቢት ፳፻፲፱ ዓ.ም. ሰኞ	መጋቢት ፳፻፲፱ ዓ.ም. ሰኞ	፳፻፲፱ ዓ.ም. ሰኞ
፳፻፲፱ ዓ.ም. ሰኞ	፳፻፲፱ ዓ.ም. ሰኞ	፳፻፲፱ ዓ.ም. ሰኞ





Վիճակ 6: Առանձին ԸՆԴՀԱՆՈՒՐ



Վիճակ 7: ԱՐԿԱՆԻՍ ԿԵՆՏՐՈՆԻ ԲԵՐԵՆԵՐԵՐԻ ԲԵՐԵՆԵՐԵՐԻ ԲԵՐԵՆԵՐԵՐԻ





[illegible][illegible]





ՎԻՊՍՎՆ 10: ԵԴՎԵՐԴ ԵԴԵՐՃԻ



ՎԻՊՍՎՆ 11: ԸԵՅՎ ԿՃԿԵԿԵԼ ԼՍԸՎՍԼԵՆ ԵԼՍԵ ԵԴՎԵՐԴ ԵԴԵՐՃԻՆՏ

ፒሮግራም ርዕሰ ምክር ቤቱ የጋራ ምርጫ ማስተካከያ ስልጣን ለጥቅምት 17-ገ ላይ ረጅም ሪፖርት ለሚያቀርቡት ምክር ቤቱ አባላት ማቅረብ አቅጥሯል። ምክር ቤቱ የጋራ ምርጫ ማስተካከያ ስልጣን ለጥቅምት 17-ገ ላይ ረጅም ሪፖርት ለሚያቀርቡት ምክር ቤቱ አባላት ማቅረብ አቅጥሯል።



4.1.1.6  $\triangleright^{\mathfrak{b}} \neg \triangleleft^{\mathfrak{a}} \Gamma \quad d\Delta^{\mathfrak{a}} \mathfrak{b}^{\mathfrak{b}} <^{\mathfrak{c}} \quad \wedge \neg \neg^{\mathfrak{c}}$

[illegible]











ቅጥረኛ 15: ጉዳይ ስጦታ



ቅጥረኛ 16: መገንጠል ለገናን ምዕራባዊ ስጦታ ለመገንጠል

[illegible]

ጠቃሚ የሰነድ አጠቃቀም ማረጋገጫ	ጠቃሚ የሰነድ አጠቃቀም ማረጋገጫ በሰነድ አጠቃቀም ማረጋገጫ 08MN053
ጠቃሚ የሰነድ አጠቃቀም ማረጋገጫ	ጠቃሚ የሰነድ አጠቃቀም ማረጋገጫ በሰነድ አጠቃቀም ማረጋገጫ 20
ጠቃሚ የሰነድ አጠቃቀም ማረጋገጫ	ጠቃሚ የሰነድ አጠቃቀም ማረጋገጫ በሰነድ አጠቃቀም ማረጋገጫ 08MN053





ՎԻԴԵՈՎԵՐ 18: ԺԱՅԻ CV-059 ՄԵՐԵՆԻՆԻ ՔԱՐԿ 59.5-Դ







ՎԻԴԵՈ 20: ՃԴՂԻ ՔՅՈՒՄԵՐ ՎԵՐԱԾՏՈՒՄ ՏՈՐԻ ՔՐԴ 94.5-Դ



ՎԻԴԵՈ 21: ԵԼԵՄԻ ԿԱՐԼԵԴ ԿՆԻՐԼՏՅՈՒՆ ՇՈՒՄ ԵԼԵՄԻՆԻ ՎԵՐԱԾՏՈՒՄ ԵԼԵՄԻՆԻ  
ՏՈՐԻՆԻՄ ԵԼԵՄԻՆԻ







ՎԻՃԵԿ 23: ԱՐՇԱՆԻ ԴՆԵՍԻ ՇՐՈՒՄ



ՎԻՃԵԿ 24: ԼՆՊՆ ԱՐՇԱՆԻ ԴՆԵՍԻ ՇՐՈՒՄ



#### 4.1.3.2 ስርዓተ ልማት ስራዎች 1

[illegible]

ᐅᓂᕈᓗᐃᑦ 25: ᐅᓂᕈᓗᐃᑦ ᐅᓂᕈᓗᐃᑦ 1, ᐅᓂᕈᓗᐃᑦ 2021



**ᐅᓂᕈᖃᑦ** 26: ᐅᓂᕈᖃᑦ ᐱᓄᔭᑦ 1, ᐱᕋᒃ 2022









Վնթանկ 29: Ինժեներական Լճակում Երկրակամ Մոնիթորինգ Ունեցող



Վնթանկ 30: Ինժեներական Լճակում Երկրակամ Մոնիթորինգ Լճակում Վերականգնողական Վերականգնողական Մոնիթորինգ







Վնասված 32: Կերակուրի Վնասված Վնասված Եւրոպական Եւրոպական Եւրոպական















#### 4.1.3.8 ᐊᑦᑭᑦᑭᑦᑭᑦ ᐊᑭᑭ ᓄᓇᑭᑦᑭᑦᑭᑦ ᐃᑭᑦ ᓇᐅᑦᑭᑦᑭᑦᑭᑦ

ᐱᑦᑭᑦᑭᑦᑭᑦᑭᑦ ᑕᐃᑭᑭᑦ ᐊᑭᑭ ᑦᑭᓄᐃᑦᑭᑦᑭᑦᑭᑦ ᓇᑦᑭᑭᑦ 6-ᑭ, ᐊᑦᑭᑦᑭ ᓇᐅᑦᑭᑦᑭᑦᑭᑦᑭᑦᑭᑦᑭᑦ ᐱᐅᑦᑭᑦᑭᑦ ᑭᑦᓄᓄᑦᑭᑦᑭᑦ ᑭᑦᑭᑦᑭᑦ ( $\text{SO}_2$ ) ᐊᑭᑭ  $\text{NO}_2$ -ᑭ. ᓄᓇᑭᑦ ᐊᑦᑭᑦᑭᑦᑭᑦᑭᑦ ᑭᑭᑭᑦᑭᑦ ᐃᑦᑭᑭᓄᐃᑦᑭᑦᑭᑦᑭᑦ ᑕᐅᑕᐅᑦᑭᑦᑭᑦ ᑭᑦᑭᑦᑭᑦ ᐊᑦᑭᑦᑭᑦᑭᑦᑭᑦ ᐱᐅᑦᑭᑦᑭᑦ ᓇᐅᑦᑭᑦᑭᑦᑭᑦᑭᑦᑭᑦ (ᐊᑦᑭᑦᑭᑦᑭᑦ 38) ᐃᑦᑭᑦᑭᑦᑭᑦᑭᑦ ᐅᑦᑭᑦᑭᑦᑭᑦ ᐃᑦᑭᑦᑭᑦ ᐊᑦᑭᑦᑭᑦᑭᑦᑭᑦᑭᑦᑭᑦᑭᑦ. ᐃᑦᑭᑦᑭᑦ ᐃᑦᑭᑦ, ᑦᑭᑭᑦᑭᑦᑭᑦᑭᑦᑭᑦ ᑭᑭᑦᑭᑦᑭᑦᑭᑦ ᑦᑭᑭᑦᑭᑦᑭᑦᑭᑦᑭᑦᑭᑦ ᑭᑦᓄᓄᑦᑭᑦᑭᑦ ᑭᑦᑭᑦᑭᑦ ( $\text{SO}_2$ ) ᐊᑭᑭ  $\text{NO}_2$ -ᑭ ᑭᑭᑦᑭᑦᑭᑦᑭᑦᑭᑦᑭᑦ ᐊᑭᑭ ᑦᐱᑦᑭᑦᑭᑦᑭᑦᑭᑦ ᓇᑦᓄᐃᑦᑭᑦᑭᑦᑭᑦ ᐊᑦᑭᑦᑭᑦᑭᑦᑭᑦ ᐱᐅᑦᑭᑦᑭᑦ ᐱᑦᑭᑦᑭᑦᑭᑦ ᑦᑭᑦᑭᑦᑭᑦᑭᑦᑭᑦᑭᑦᑭᑦ. (ᐊᑦᑭᑦᑭᑦᑭᑦ 39).



ᐊᑦᑭᑦᑭᑦᑭᑦ 38: ᑦᑭᑭᑦᑭᑦᑭᑦᑭᑦᑭᑦ ᐊᑦᑭᑦᑭᑦᑭᑦᑭᑦᑭᑦ ᐱᐅᑦᑭᑦᑭᑦ ᓇᐅᑦᑭᑦᑭᑦᑭᑦᑭᑦ









**INUKTITUT BASIC CLASSES**

Are you interested in learning to speak basic Inuktitut classes,

Limited people three time per week Mondays  
Wednesdays and Fridays evenings for days shifts and  
night shifts.

We have limited seats available, if your interested  
please sign up with Cultural Advisor

If more than 10 people interested for Nights shifts and  
Days shifts will draw names to Attend the classes

I will set up a time for Night shifts in the morning if  
there is interest, in Attending the classes

Monday August 15, 2022 is the first sessions

Thank you

Cultural Advisor  
Hannah Oolayou

**STAY SAFE  
WHEN  
LIFTING AND  
HANDLING**

ክፍል ለመጠየቅ  
በጥንቃቄ ይሰሩ

የሰራተኛውን ጤና ይጠበቁ



የሰራተኛውን ጤና ይጠበቁ  
© Copyright Industry Ltd.

ወይም ለጥንቃቄ ማረጋገጥ











- [illegible]

<ፎረም> ስለሚታወቅ ምክር ቤቱ የሚገልጽ ማንኛውም ማረጋገጫ የሚያስፈልግ ሲሆን፣ በጥቅምት 12፣ 2022-፣ <ፎረም> ማረጋገጫው የሚገልጽ ማንኛውም (አርማስ/ሰራተኛ ለ) ሰራተኛው የሚገልጽ ማንኛውም ማረጋገጫ ሊገኝ አይችልም።



በበክርድደረጃ ስም: Cory Barker,  
ዲጋይታል ሚኒስቴር  
ሪፖርት ስራ ምክር ቤት  
ርዕሰ ሚኒስትር: ሪፖርት ስራ ምክር ቤት  
ድረ ምረቃ: ሪፖርት ስራ ምክር ቤት

ሪፖርት ስራ ምክር ቤት: C. Barker

የጥያቄ ስም: Kelli Gillard  
ርዕሰ ሚኒስትር: ሪፖርት ስራ ምክር ቤት  
ድረ ምረቃ: ሪፖርት ስራ ምክር ቤት

ሪፖርት ስራ ምክር ቤት: Kelli Gillard

በበክርድደረጃ ስም: Guillaume Daoust  
ርዕሰ ሚኒስትር: ሪፖርት ስራ ምክር ቤት  
ድረ ምረቃ: ሪፖርት ስራ ምክር ቤት

ሪፖርት ስራ ምክር ቤት: Guillaume Daoust

[illegible]



September 10, 2022

Cory Barker  
Technical Advisor III  
Nunavut Impact Review Board

Guillaume Daoust  
Technical Advisor II  
Nunavut Impact Review Board

**Re: Follow up to NIRB August 2022 Site Visit**

Baffinland Iron Mines Corporation (Baffinland) is pleased to provide the Nunavut Impact Review Board with information to NIRB's comments and questions from their Site Visit on August 24-25, 2022.

The attached Table 1 provides Baffinland's follow-up information from the NIRB Site Visit.

Should you have any additional concerns or questions regarding the attached information, or Baffinland's environmental monitoring and operational management implemented throughout 2022 to ensure adherence to the terms and conditions of Project Certificate No. 005 for the Mary River Project, please do not hesitate to contact the undersigned at your convenience.

Regards,

A handwritten signature in black ink, appearing to read "Swenson", with a small flourish at the end.

Todd Swenson  
Environmental Superintendent

Cc: Megan Lord-Hoyle, Lou Kamermans, Timothy Sewell, Kendra Button, Connor Devereaux, Francois Gaudreau, Martin Beausejour (Baffinland)

**Attachments**

Attachment 1 – Table 1: Baffinland Follow-Up Information to NIRB 2022 August Site Visit

Attachment 2 – Photos



## **Attachment 1**

Baffinland Follow-Up Information to NIRB 2022 August Site Visit

**Table 1: Baffinland Follow-Up Information to August 2022**  
**Site Visit**

Cmt. #	Project Location	Topic	Additional Information	BIM Response
1	Site Wide	Helicopter Flight non-compliance rationales	Action – to provide summary of the flight compliance issue.	<p>Compliant heights are heights that are above the 650 m limit for wildlife (i.e. snow geese or Caribou). Non-compliant are ones that are not. However, non-compliant with rationale, is where we are below these heights, but for necessary reasons, such as slinging, personnel pick-up/drop-off, take off/landings. This is stated in PC condition 59.</p> <p>There are no alternative measures to slinging. Slinging generally occurs in remote areas that are not accessible by the Tote Road. For example, to/from the Brucehead narwhal observation camp and for various monitoring programs (ie. dustfall, AEMP lakes, vegetation surveys). Due to the limited accessibility of these sites, pick-ups and drop-offs cannot be adjusted to improve compliance. The majority of sampling areas that are accessed by helicopter are reference sites (&gt; 1 km from the PDA) and therefore cannot be safely accessed by field staff on foot. Many of these areas also have terrain that further limits the ability of field staff to access on foot. Additionally, eliminating the use of helicopters would prevent programs from being completed in a timely manner due to the short duration of the field season and lack of resources (ie. vehicles) on site.</p>
2	Tote Road	Culvert maintenance and repair plan update.	NIRB requested a timeline/plan regarding when repairs will be made to culverts along the Tote Road.	Baffinland is finalizing a crossing remediation plan for submission to DFO as a requirement of relevant authorizations and the Fisheries Act. The remediation plan will include the methods and timelines to complete work on specified culverts. The details of this plan and work to date will be included in our regular annual reporting cycle.



Cmt. #	Project Location	Topic	Additional Information	BIM Response
3	Tote Road	Dust Suppression and Dust-Blokr® Application	(discussed at length; no specific question asked).	<p>Baffinland takes the issue of dust very seriously and has made dustfall mitigation and monitoring a priority since operations began. Although monitoring results to date indicate no long-term effects of dustfall on vegetation, aquatic environments, wildlife or human health, Baffinland recognizes that dustfall continues to be an important source of concern for local communities.</p> <p>Since 2018, Baffinland has implemented the following additional mitigation and monitoring measures, which include:</p> <ul style="list-style-type: none"> <li>• application of DustBlokr® to project roadways including the Tote Road (this is a glycol based product approved by the GN and has also been trialed in several Nunavut communities);</li> <li>• application of DusTreat® to Milne Port stockpiles, a product that forms a crust around the stockpiled ore, effectively covering and containing potential fugitive dust;</li> <li>• development of a new remote sensing monitoring program to characterize the extent and concentration of dustfall, utilizing satellite imagery Snow Darkening Index values; and</li> <li>• expansion of the existing passive dust monitoring program, including the installation of several collectors at below standard heights to address community and TEWG requests.</li> </ul> <p>The above is in addition to the ongoing implementation of existing dust mitigation measures, which include, but are not limited to:</p> <ul style="list-style-type: none"> <li>• installation of hoods and shrouds on crusher plant equipment (stackers and conveyors) to minimize fugitive dust generation during crushing operations as well as rubber bellows to control the fall of the ore and reduce the distance the ore freefalls to the pad; and</li> </ul>

Cmt. #	Project Location	Topic	Additional Information	BIM Response
				<ul style="list-style-type: none"> <li>• application of dust suppressants (calcium chloride, water) to the pads, laydown and parking areas at the Mine Site and Milne Port, as well as along the Tote Road.</li> </ul>
4	Site Wide	Freshet-Related TSS Events	(discussed at length; no specific question asked).	<p>Upon discovery of the elevated instream TSS conditions at these drainages, personnel worked to install sedimentation mitigation measures including silt fences, silt curtains and coconut husk coir logs, in areas around the CLT, CLSP, SDLT and LDFG outfalls in accordance with Baffinland's Surface Water and Aquatic Ecosystem Management Plan, to slow the flow and settle sediments prior to the water entering the streams. Water diversion and pumping strategies were also implemented to reduce potential erosion and sedimentation.</p> <p>Water quality is conducted throughout freshet, as per Baffinland's Freshet Monitoring Procedure.</p> <p>Conditions at CLT, CLSP, SDLT and LDFG, as well as other freshet monitoring locations were sampled and assessed as per Baffinland's Freshet Monitoring Program. Freshet monitoring continued until June 25 when water quality improved at the CLT, SDLT and LDFG monitoring locations. Sampling at CLSP ended on June 20 following the end of flow conditions. The development and implementation of the Long Term Surface Water Management Plan under Modification No. 13 is ongoing with support from a third party consultant.</p> <p>In 2022, construction of the MS-11 Surface Water Management Pond was completed, as part of the first phase of the implementation of the plan. Freshet preparation and response measures will be reviewed and any lessons learned will be incorporated into future freshet planning.</p>

Cmt. #	Project Location	Topic	Additional Information	BIM Response
				Additional water sampling conducted for acute toxicity on May 22 at CLT-OUT and SDLT-OUT and June 7th at LDFG-OUT and CLSP-OUT LDFG locations indicated the samples collected were not acutely toxic.
5	Mary River Landfill	Waste Management at the landfill	Presence of partially buried tires in the landfill Action – tires to be removed and an audit of other non-compliant items to be removed.	The area where the tires were found was scanned and the tires removed from the landfill.  See Photo 1
6	Mary River Dyno Snow Stockpile	Waste Management at the Dyno Snow Stockpile	Waste and Debris from melting snow stockpile near Dyno.	A combination of excavator and hand-picking was employed once the ground surface was safe for foot access, and all debris from both Dyno snow stockpiles was removed.  See Photos 2-4 for after photos.





## **Attachment 2**

### **Photos**



**Figure 1. Photo of Landfill area following tire removal**



**Figure 2. Photo of Snow Dump Area by Dyno – Debris removal ongoing**





**Figure 3. Photo of Snow Dump Area by Dyno – Debris removal ongoing**



**Figure 4. Photo of Snow Dump Area by Dyno – all debris removed**