

## An aerial photograph of a large-scale open-pit mining operation. The mine is characterized by deep, terraced walls and a central pond filled with turquoise-colored water. A network of roads and tracks crisscrosses the site, connecting different levels and areas. The surrounding landscape is a mix of dry, brownish terrain and patches of green vegetation. The image is presented with a dark green, semi-circular overlay on the left side.

▷ ↻ ⑆ Ⓒ Ⓐ Ⓜ Ⓜ

NIRB File No. 03MN107 &  
16MN056 / Վճռահան  
որոշում № 03MN107 &  
16MN056

Baker Lake / ‘bLσ’ɔɐ̯ɥ



**NUNAVUT IMPACT REVIEW BOARD**  
**NUNAVUMI AVATILIKIYIN KATIMAYIN**

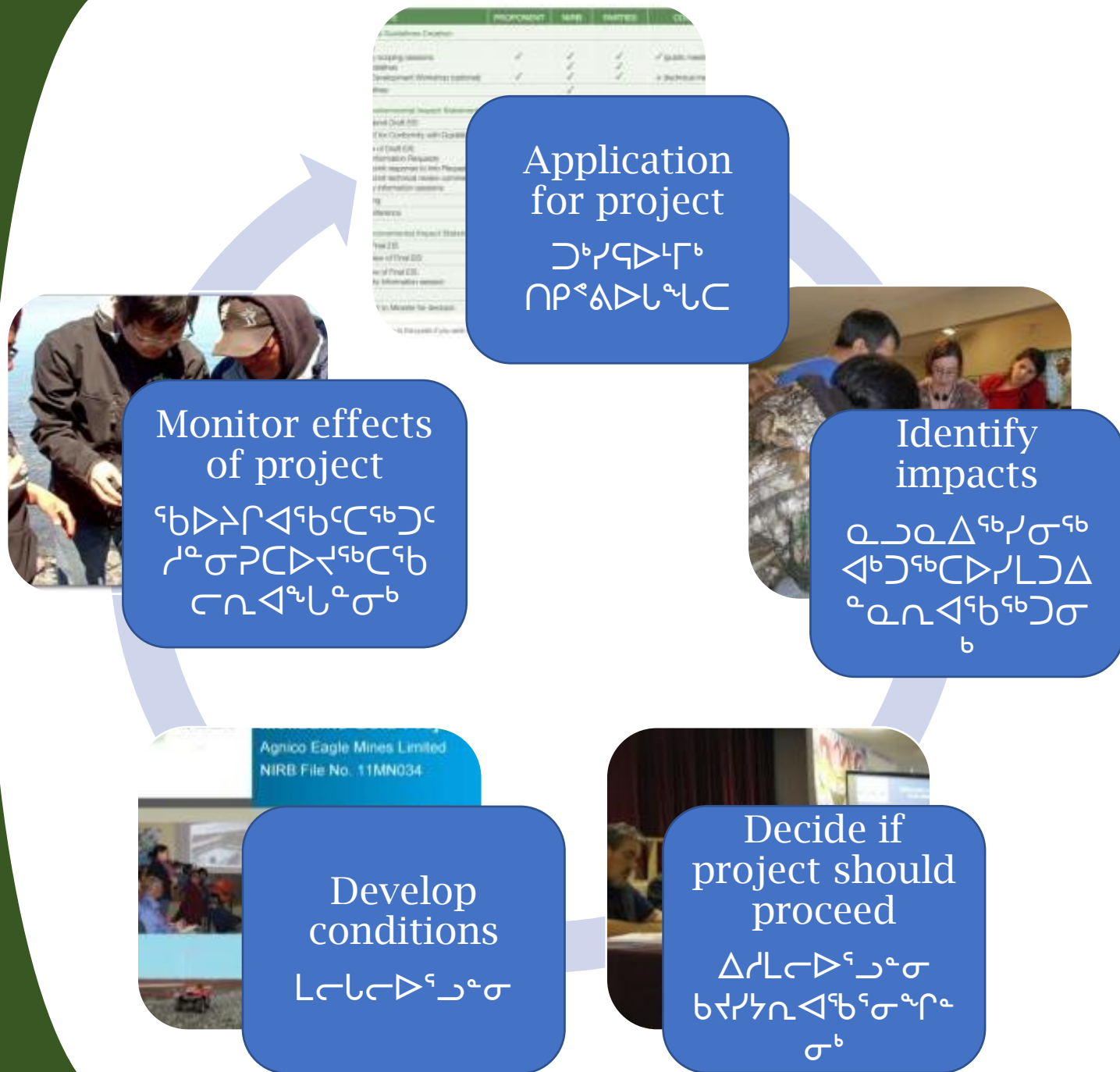
- [illegible]

- ረፋሪዎችን ለማስተካከል የሚያስፈልጉትን ምርመራዎች ይደርሱ

- An institution of public government responsible for environmental impact assessment of proposed projects in Nunavut

- To protect and promote the well being of the Environment and Nunavummiut through our work

ᐱᓕᑲᖅᓕᓕᖅ  
ᓂᓄᓇᒃ  
ᐱᓚᑲᓕᑲᖅ  
ᐸᓕ  
ᑲᑲᓴᓇᓯᓕ?





[illegible]

NUNAVUT  
LAND CLAIMS  
AGREEMENT  
- BAKER  
LAKE INUIT  
OWNED LAND



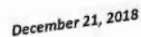
Baker Lake

# Project Overview

- [illegible]





[illegible][illegible]



## Baker Lake and Marshalling Facility

ᑲᓴᓂᑦᑲᓴᓂᑦ ᐱᓴᓂᑦ  
ᐱᓴᓂᑦᑲᓴᓂᑦ







# Mine Site

▶ ⚡ ⚡ ⚡ ⚡ ⚡ ⚡











Waste Management  
◀C♢ Γ◀σℵ▷σ<sup>α</sup>ℵ



# Tailings Storage Facility

ΔC▷<sup>ᶜᵇ</sup>∫<sup>ᶜᵇ</sup>∫L  
┘<sub>ᵇ</sub><sup>c</sup>  
◁<sup>b</sup>C<sup>c</sup>Δ<sup>b</sup>

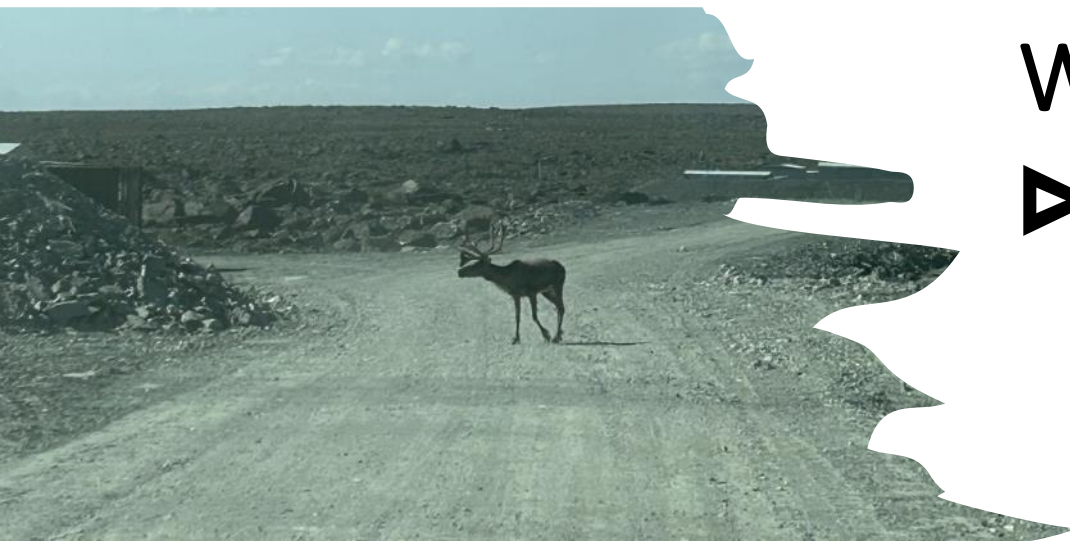


# Landfarm

◁<sup>b</sup>Cd<sup>c</sup>Δ<sup>b</sup>







Wildlife

▷<sup>ˆ</sup>JΔσ?Π







𐎧𐎡𐎴  
 𐎠𐎡𐎢𐎣𐎤𐎥  
 𐎢𐎠𐎡𐎢𐎣𐎤𐎥  
 𐎧𐎡𐎴𐎢𐎣𐎤𐎥𐎦𐎧𐎨  
 𐎠𐎡𐎢𐎣𐎤𐎥𐎦𐎧𐎨𐎩𐎪𐎫  
 𐎠𐎡𐎢𐎣𐎤𐎥𐎦𐎧𐎨𐎩𐎪𐎫𐎬𐎭𐎮𐎯𐎰𐎱𐎲𐎳𐎴𐎵𐎶𐎷𐎸𐎹𐎺𐎻𐎼𐎽𐎾𐎿𐏀𐏁𐏂𐏃𐏄𐏅𐏆𐏇𐏈𐏉𐏊𐏋𐏌𐏍𐏎𐏏𐏐𐏑𐏒𐏓𐏔𐏕𐏖𐏗𐏘𐏙𐏚𐏛𐏜𐏝𐏞𐏟𐏠𐏡𐏢𐏣𐏤𐏥𐏦𐏧𐏨𐏩𐏪𐏫𐏬𐏭𐏮𐏯𐏰𐏱𐏲𐏳𐏴𐏵𐏶𐏷𐏸𐏹𐏺𐏻𐏼𐏽𐏾𐏿𐐀𐐁𐐂𐐃𐐄𐐅𐐆𐐇𐐈𐐉𐐊𐐋𐐌𐐍𐐎𐐏𐐐𐐑𐐒𐐓𐐔𐐕𐐖𐐗𐐘𐐙𐐚𐐛𐐜𐐝𐐞𐐟𐐠𐐡𐐢𐐣𐐤𐐥𐐦𐐧𐐨𐐩𐐪𐐫𐐬𐐭𐐮𐐯𐐰𐐱𐐲𐐳𐐴𐐵𐐶𐐷𐐸𐐹𐐺𐐻𐐼𐐽𐐾𐐿𐑀𐑁𐑂𐑃𐑄𐑅𐑆𐑇𐑈𐑉𐑊𐑋𐑌𐑍𐑎𐑏𐑐𐑑𐑒𐑓𐑔𐑕𐑖𐑗𐑘𐑙𐑚𐑛𐑜𐑝𐑞𐑟𐑠𐑡𐑢𐑣𐑤𐑥𐑦𐑧𐑨𐑩𐑪𐑫𐑬𐑭𐑮𐑯𐑰𐑱𐑲𐑳𐑴𐑵𐑶𐑷𐑸𐑹𐑺𐑻𐑼𐑽𐑾𐑿𐒀𐒁𐒂𐒃𐒄𐒅𐒆𐒇𐒈𐒉𐒊𐒋𐒌𐒍𐒎𐒏𐒐𐒑𐒒𐒓𐒔𐒕𐒖𐒗𐒘𐒙𐒚𐒛𐒜𐒝𐒞𐒟𐒠𐒡𐒢𐒣𐒤𐒥𐒦𐒧𐒨𐒩𐒪𐒫𐒬𐒭𐒮𐒯𐒰𐒱𐒲𐒳𐒴𐒵𐒶𐒷𐒸𐒹𐒺𐒻𐒼𐒽𐒾𐒿𐓀𐓁𐓂𐓃𐓄𐓅𐓆𐓇𐓈𐓉𐓊𐓋𐓌𐓍𐓎𐓏𐓐𐓑𐓒𐓓𐓔𐓕𐓖𐓗𐓘𐓙𐓚𐓛𐓜𐓝𐓞𐓟𐓠𐓡𐓢𐓣𐓤𐓥𐓦𐓧𐓨𐓩𐓪𐓫𐓬𐓭𐓮𐓯𐓰𐓱𐓲𐓳𐓴𐓵𐓶𐓷𐓸𐓹𐓺𐓻𐓼𐓽𐓾𐓿𐔀𐔁𐔂𐔃𐔄𐔅𐔆𐔇𐔈𐔉𐔊𐔋𐔌𐔍𐔎𐔏𐔐𐔑𐔒𐔓𐔔𐔕𐔖𐔗𐔘𐔙𐔚𐔛𐔜𐔝𐔞𐔟𐔠𐔡𐔢𐔣𐔤𐔥𐔦𐔧𐔨𐔩𐔪𐔫𐔬𐔭𐔮𐔯𐔰𐔱𐔲𐔳𐔴𐔵𐔶𐔷𐔸𐔹𐔺𐔻𐔼𐔽𐔾𐔿𐕀𐕁𐕂𐕃𐕄𐕅𐕆𐕇𐕈𐕉𐕊𐕋𐕌𐕍𐕎𐕏𐕐𐕑𐕒𐕓𐕔𐕕𐕖𐕗𐕘𐕙𐕚𐕛𐕜𐕝𐕞𐕟𐕠𐕡𐕢𐕣𐕤𐕥𐕦𐕧𐕨𐕩𐕪𐕫𐕬𐕭𐕮𐕯𐕰𐕱𐕲𐕳𐕴𐕵𐕶𐕷𐕸𐕹𐕺𐕻𐕼𐕽𐕾𐕿𐖀𐖁𐖂𐖃𐖄𐖅𐖆𐖇𐖈𐖉𐖊𐖋𐖌𐖍𐖎𐖏𐖐𐖑𐖒𐖓𐖔𐖕𐖖𐖗𐖘𐖙𐖚𐖛𐖜𐖝𐖞𐖟𐖠𐖡𐖢𐖣𐖤𐖥𐖦𐖧𐖨𐖩𐖪𐖫𐖬𐖭𐖮𐖯𐖰𐖱𐖲𐖳𐖴𐖵𐖶𐖷𐖸𐖹𐖺𐖻𐖼𐖽𐖾𐖿𐗀𐗁𐗂𐗃𐗄𐗅𐗆𐗇𐗈𐗉𐗊𐗋𐗌𐗍𐗎𐗏𐗐𐗑𐗒𐗓𐗔𐗕𐗖𐗗𐗘𐗙𐗚𐗛𐗜𐗝𐗞𐗟𐗠𐗡𐗢𐗣𐗤𐗥𐗦𐗧𐗨𐗩𐗪𐗫𐗬𐗭𐗮𐗯𐗰𐗱𐗲𐗳𐗴𐗵𐗶𐗷𐗸𐗹𐗺𐗻𐗼𐗽𐗾𐗿𐘀𐘁𐘂𐘃𐘄𐘅𐘆𐘇𐘈𐘉𐘊𐘋𐘌𐘍𐘎𐘏𐘐𐘑𐘒𐘓𐘔𐘕𐘖𐘗𐘘𐘙𐘚𐘛𐘜𐘝𐘞𐘟𐘠𐘡𐘢𐘣𐘤𐘥𐘦𐘧𐘨𐘩𐘪𐘫𐘬𐘭𐘮𐘯𐘰𐘱𐘲𐘳𐘴𐘵𐘶𐘷𐘸𐘹𐘺𐘻𐘼𐘽𐘾𐘿𐙀𐙁𐙂𐙃𐙄𐙅𐙆𐙇𐙈𐙉𐙊𐙋𐙌𐙍𐙎𐙏𐙐𐙑𐙒𐙓𐙔𐙕𐙖𐙗𐙘𐙙𐙚𐙛𐙜𐙝𐙞𐙟𐙠𐙡𐙢𐙣𐙤𐙥𐙦𐙧𐙨𐙩𐙪𐙫𐙬𐙭𐙮𐙯𐙰𐙱𐙲𐙳𐙴𐙵𐙶𐙷𐙸𐙹𐙺𐙻𐙼𐙽𐙾𐙿𐚀𐚁𐚂𐚃𐚄𐚅𐚆𐚇𐚈𐚉𐚊𐚋𐚌𐚍𐚎𐚏𐚐𐚑𐚒𐚓𐚔𐚕𐚖𐚗𐚘𐚙𐚚𐚛𐚜𐚝𐚞𐚟𐚠𐚡𐚢𐚣𐚤𐚥𐚦𐚧𐚨𐚩𐚪𐚫𐚬𐚭𐚮𐚯𐚰𐚱𐚲𐚳𐚴𐚵𐚶𐚷𐚸𐚹𐚺𐚻𐚼𐚽𐚾𐚿𐛀𐛁𐛂𐛃𐛄𐛅𐛆𐛇𐛈𐛉𐛊𐛋𐛌𐛍𐛎𐛏𐛐𐛑𐛒𐛓𐛔𐛕𐛖𐛗𐛘𐛙𐛚𐛛𐛜𐛝𐛞𐛟𐛠𐛡𐛢𐛣𐛤𐛥𐛦𐛧𐛨𐛩𐛪𐛫𐛬𐛭𐛮𐛯𐛰𐛱𐛲𐛳𐛴𐛵𐛶𐛷𐛸𐛹𐛺𐛻𐛼𐛽𐛾𐛿𐜀𐜁𐜂𐜃𐜄𐜅𐜆𐜇𐜈𐜉𐜊𐜋𐜌𐜍𐜎𐜏𐜐𐜑𐜒𐜓𐜔𐜕𐜖𐜗𐜘𐜙𐜚𐜛𐜜𐜝𐜞𐜟𐜠𐜡𐜢𐜣𐜤𐜥𐜦𐜧𐜨𐜩𐜪𐜫𐜬𐜭𐜮𐜯𐜰𐜱𐜲𐜳𐜴𐜵𐜶𐜷𐜸𐜹𐜺𐜻𐜼𐜽𐜾𐜿𐝀𐝁𐝂𐝃𐝄𐝅𐝆𐝇𐝈𐝉𐝊𐝋𐝌𐝍𐝎𐝏𐝐𐝑𐝒𐝓𐝔𐝕𐝖𐝗𐝘𐝙𐝚𐝛𐝜𐝝𐝞𐝟𐝠𐝡𐝢𐝣𐝤𐝥𐝦𐝧𐝨𐝩𐝪𐝫𐝬𐝭𐝮𐝯𐝰𐝱



VEC	Comments
<b>Water Quality</b>	No issues or changes to report for water quality terms and conditions.
<b>Noise and Vibration</b>	Operational noise monitoring equipment now onsite. No issues to report for noise and vibration terms and conditions.
<b>Fish and Fish Habitat</b>	No issues or changes to report for fish and fish habitat terms and conditions.
<b>Waste Management</b>	Positive improvements this year, such as the removal of the faulty incinerator and placement of wildlife deterrents at the landfill. Active cleanup of a diesel spill on the All-weather Access Road ongoing.

[illegible]





# NIRB's Evaluation of the Meadowbank Gold Mine Project

ፌዴራል  
ግብርናዊ  
ፍቃድ  
ፍጥነት  
ፍጥነት  
ፍጥነት  
ፍጥነት  
ፍጥነት



VEC	Comments
<b>Marine Environment</b>	Difficulties with implementing local marine monitors on vessels and incorporating local knowledge into mitigation plans. Ongoing outages for ship location data also an issue.
<b>Abandonment and Reclamation</b>	No issues with terms and conditions. Community requesting that the Proponent share more information on closure.
<b>Socio-Economic</b>	No issues with terms and conditions. Many socio-economic programs on hold due to COVID-19.
<b>Air Quality</b>	Non-compliance with dust suppression requirements. No other air quality concerns.

[illegible]

	Inuktitut
ለሚገኝበት ቦታ ለመሄድ ይገባል	ለሚገኝበት ቦታ ለመሄድ ይገባል ለሚገኝበት ቦታ ለመሄድ ይገባል
በሀገር ውስጥ ለመሄድ ይገባል	በሀገር ውስጥ ለመሄድ ይገባል ለሚገኝበት ቦታ ለመሄድ ይገባል
በሀገር ውስጥ ለመሄድ ይገባል	በሀገር ውስጥ ለመሄድ ይገባል ለሚገኝበት ቦታ ለመሄድ ይገባል
በሀገር ውስጥ ለመሄድ ይገባል	በሀገር ውስጥ ለመሄድ ይገባል ለሚገኝበት ቦታ ለመሄድ ይገባል





# NIRB's Evaluation of the Meadowbank Gold Mine Project

ᓄᓇᓂᓂᓂ  
ᐱᓇᓂᓂᓂᓂᓂ  
ᓂᓂᓂᓂᓂᓂᓂ  
ᓂᓂᓂᓂᓂᓂᓂᓂ  
ᐱᓇᓂᓂᓂᓂᓂᓂ  
ᓂᓂᓂᓂᓂᓂᓂᓂ



VEC	Comments
<b>Accidents and Malfunctions</b>	Deficient compliance with the requirement to consult elders and affected communities on this topic.
<b>Terrestrial Environment</b>	Parties have concerns with caribou protection measures being followed properly by the Proponent. Ongoing concerns with reporting aircraft flight altitudes.
<b>All-Weather Access Road</b>	Ongoing non-compliance with requirement to suppress dust on the entire road.
<b>Incorporation of Inuit Qaujimagatuqangit</b>	Ongoing concerns from parties and community members. Lack of follow-up with communities and lack of clarity on how knowledge is written into plans.

★ Meadowbank Gold Mine  
 <>ᵑᵇ ᵑᵇᵐᵇ ᵓᵓᵔᵈᵃᵇ ᵔᵗᵑᵇᶜᵒᵕᵀ

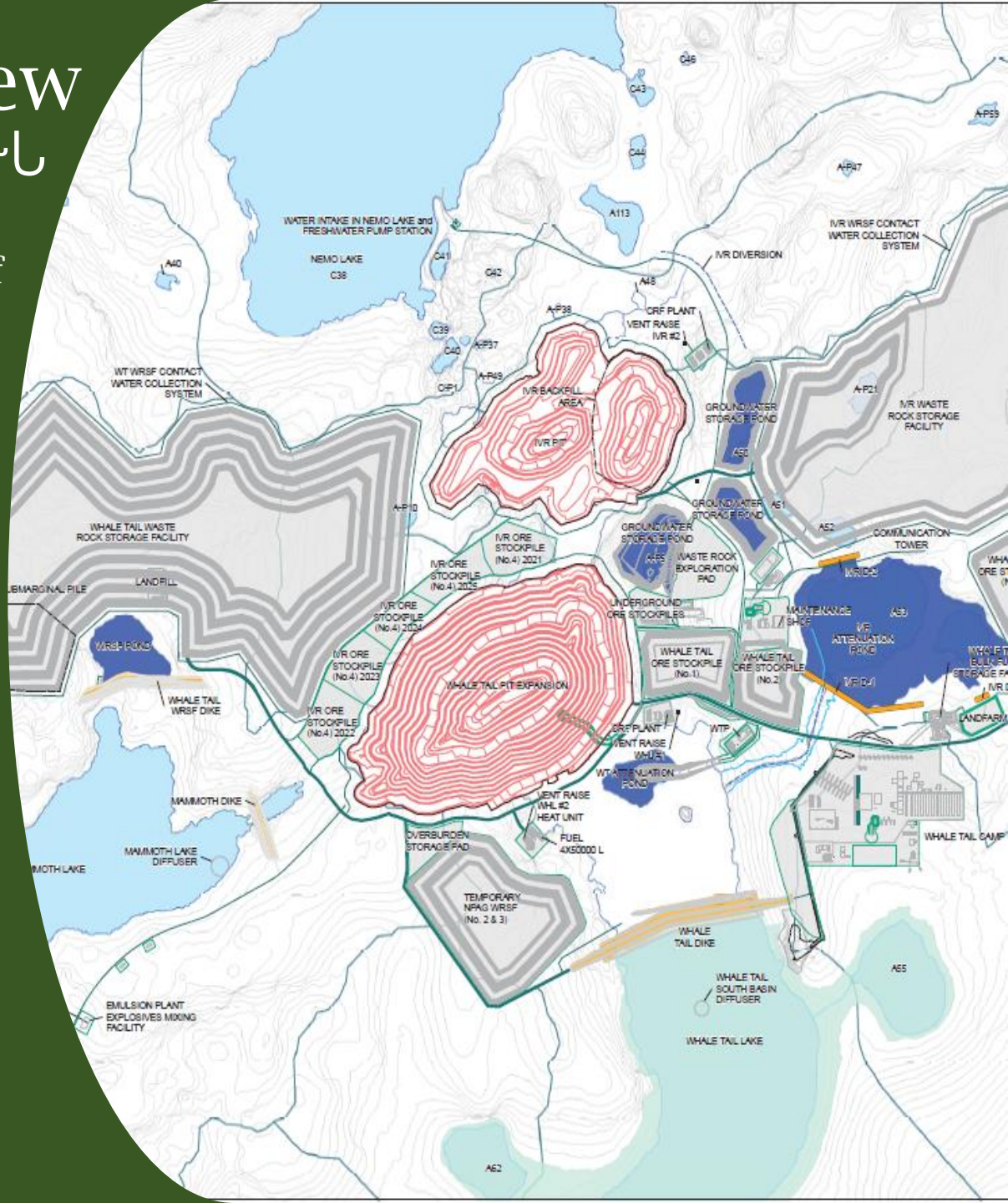
NUNAVUT  
LAND CLAIMS  
AGREEMENT  
- BAKER  
LAKE INUIT  
OWNED LAND

★ Baker Lake ᑲᓴᓂᑦᑦᑲᓴ



# Project Overview

- ~150 kilometres (km) N of Baker Lake and ~50 km NW of Meadowbank Gold Mine Project
- Open pit gold mining (Whale Tail and IVR Pit)
- Supporting infrastructure at Amaruk Property
- Use of existing infrastructure at Meadowbank
- Haul road



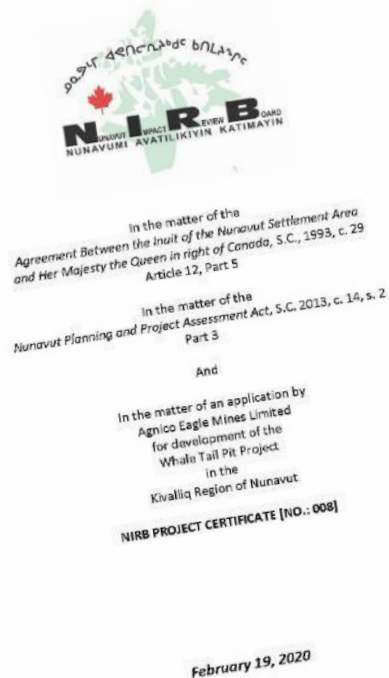
[illegible]

**March 2018: NIRB Project Certificate (PC)  
No. 008 issued to Agnico Eagle  
Mines Limited**

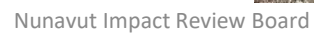
**፲፭ኛ 2018: ልዩነት ለሰላም ልማት 008**  
**ጋራ ልማት ለሰላም**

**In 2020, the NIRB amended the PC. 008**  
**Δ 2020, ΔΕΠΙΝΕΤΕ ΔΕΠΙΝΕΤΕ ΔΕΠΙΝΕΤΕ ΔΕΠΙΝΕΤΕ**  
**ΛΕΠΙΝΕΤΕ ΔΕΠΙΝΕΤΕ ΔΕΠΙΝΕΤΕ ΔΕΠΙΝΕΤΕ**

## 68 terms and conditions to limit adverse ecosystemic and socioeconomic effects

[illegible]











# Whale Tail Pit 2022

[illegible]

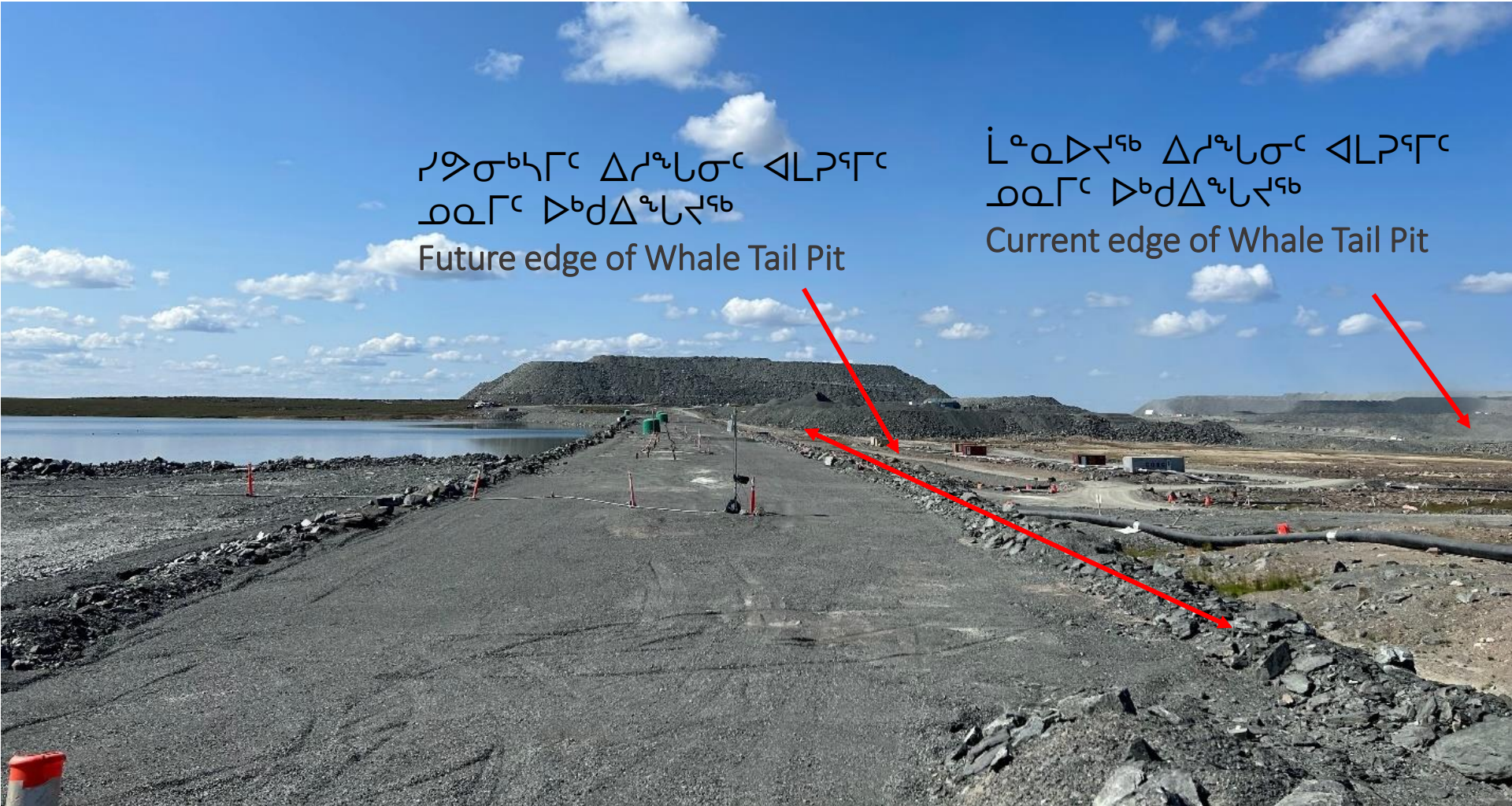


# 2023 Modification: Whale Tail Pit Pushback

2023-ԴԸ ՀԻՍԵՐԻՎԻՍԻՄԵՆ: ՀԼՔԻԴԸ ԾՈՒԴ ԵՆԺԱՆԼԻԴԸ ՀԵՆՐՄԵՆ

ԴՅՄԵԿԻԴԸ ՀԻՆԼՄԸ ՀԼՔԻԴԸ  
ԾՈՒԴ ԵՆԺԱՆԼԻԴԸ  
Future edge of Whale Tail Pit

ԼԵՈՇԻՎԵՆ ՀԻՆԼՄԸ ՀԼՔԻԴԸ  
ԾՈՒԴ ԵՆԺԱՆԼԻԴԸ  
Current edge of Whale Tail Pit





# IVR Pit 2022

## IVR ᐃᓴᑦᑕᑦᐃᑦᓴ







# IVR Pit 2023

## IVR ▷↳ԳԻՐԳԱՊԻԱ





# Water Management

## ΔΓ▷◁ Γ◁σℓ▷σ<sup>α</sup>ς

ГҒσн↳▷σ<sup>α</sup>л







ፌዴራል  
 ልዩ ሰርኪላር  
 ከሰራተኞች  
 ናቸው ለሰራተኞች  
 ስራ ለማድረግ  
 ለሚችሉት  
 ለሚችሉት  
 ለሚችሉት

VEC	Comments
Birds and Bird Habitat	Species at risk information lacking in management plans, planning to be included in updated Terrestrial Environment Management Plan (version 8).
Hydrogeology and Hydrology	No issues or changes to report for hydrogeology and hydrology.
Geological Features, Soils and Permafrost	No issues or changes to report for geological features, soils and permafrost.
Aquatic Environment	No issues or changes to report for aquatic environment.
	Inuktitut
ᑎᓐᔪᕗ ᖁᒻᒪᑐ Δσᑦᑲᑦᑕᑦᑕᓐᑭᑦ	ᐅᒫᕙΔᑦ ᐃᑐᑲᕈᕘᕋᓂᑦᑦᑦᑕᑐᕏᑦ ᑐᑭᑯᐃᒪᕙᑦᑕ ᕘᐃᑕᑦᑎᓂᑦᑕᑦ <ᑦᕘᐃᑎᑕᑦᑲᓂᓐᑭᑦᑕᑐᑦ, <ᑦᕘΔᓂᑦᑲ Δᑕᐃᑎᑕᐃᒪᕈᕘᑕᑦ ᕚᑕᓐᑭᑦᑲᑎᑦᑲᑯᒫᕙᓂᑦ ᕚᕘᑦᐃᑕΔᑦ ᕘᑦᑎᓐᓴᓂᑦ ᕘᐃᑕᑦᓂᑎᑕᑦ <ᑦᕘᐃᑎᑦ (ᐃᑦᑲᑕᒺᒺᑦ 8).
ᕚᕘᑦ Δᒪᑕᑲᓂᑦᑲ ᖁᒻᒪᑐ ᕚᕘᐃᑦ ᕘᑐᕘᓂᑦ Δᒪᑕᑲᓂᑦᑲ	ᐱᕙᕙᑎᑕᑦᑲᓂᑦᑕᑐᑦᑲ ᐃᑦᑦᑐᕐᓂᑦ ᕘᑯᕘᓐᑭᑦᑲᑐᑦᑲᓂᑦᑕᑐᑦᑲ ᕚᕘᑦ Δᒪᑕᑲᓂᑦᑕᑦ ᖁᒻᒪᑐ ᕚᕘᐃᑦ ᕘᑐᕘᓂᑦ Δᒪᑕᑲᓂᑦᑕᑦ.
ᕚᕘᑕᑲᓂᑦᑕᑦ Δᑕᑦᑎᕐᐃᕙᑦ, ΔᕙᕙΔᑦ ᖁᒻᒪᑐ ᑦᐃᕘᑯΔᕐᕘᐃᕐᑲᑦᑐᑦᑲ	ᐱᕙᕙᑎᑕᑦᑲᓂᑦᑕᑐᑦᑲ ᐃᑦᑦᑐᕐᓂᑦ ᕘᑯᕘᓐᑭᑦᑲᑐᑦᑲᓂᑦᑕᑐᑦᑲ ᕚᕘᑦ Δᑕᑦᑎᕐᐃᕙᓂᑦ, Δᕙᕙᕐᕘᑦ ᖁᒻᒪᑐ ᑦᐃᕘᑯΔᕐᕘᐃᕐᑲᑦᑐᑦᑕᑦ.
Δᒪᑦᐃᑎᑦᑎᕐᐃᕙᓂᑦ	ᐱᕙᕙᑎᑕᑦᑲᓂᑦᑕᑐᑦᑲ ᐃᑦᑦᑐᕐᓂᑦ ᕘᑯᕘᓐᑭᑦᑲᑐᑦᑲᓂᑦᑕᑐᑦᑲ Δᒪᑦ ᕘᑦᑎᓐᓴᓂᑦ.



ԺԺԹԴ  
 ՎՋՈՐՆՔ  
 ԵՈԼՔՐ  
 ԳԵԶՔԳՏՆԸ  
 ԳՐԵՆԶԸ  
 ՀԱՔՎԸ  
 ԶԿԳՐՆՎԳՃՆ  
 ՏԵ

VEC	Comments
Noise and Vibration	No issues to report. Noise monitoring equipment in operation.
Water Quality	No issues or changes to report for water quality.
Socio-Economic	Deficient compliance in many areas due to programs and training being on hold for COVID-19.
Air Quality	Ongoing non-compliance with the requirement to suppress dust on all roads. Newly-operational active NO <sub>2</sub> monitoring equipment.

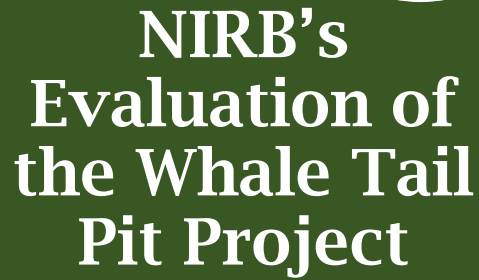
	Inuktitut
σΛᶜᵇσᶜᵇ ᐱᓚᓗ ካᓗᓚᓴᕐᕐᕐ	ለኒረበርፍጹቦርጋፍ ይፍጠሩበት፡፡ ማለፍፍፍፍፍፍ ፍጠራዊነትና ለፍጠራው ᐱፍጠራ፡፡
Δᓚᐅᐸ ፍጠራዊፍጠራ	ለኒረበርፍጹቦርጋፍ ይፍጠሩበት፡፡ ᐱፍጠራዊፍጠራ ፍጠራዊፍጠራ፡፡
Δፍጠራፍጠራ- ፍጠራዊፍጠራ	ፍጠራዊፍጠራ ለፍጠራዊፍጠራ ᐱፍጠራ ለፍጠራዊፍጠራ ᐱፍጠራ ለፍጠራዊፍጠራ ᐱፍጠራ፡፡
ᐱፍጠራዊፍጠራ ፍጠራዊፍጠራ	ፍጠራዊፍጠራ ለፍጠራዊፍጠራ ᐱፍጠራ ለፍጠራዊፍጠራ ᐱፍጠራ ለፍጠራዊፍጠራ ᐱፍጠራ፡፡





ԺԺԹԴ  
 ՎՋՈՐՆՔ  
 ԵՈԼՔՐ  
 ԳԵՃՔԻԳՄՆԸ  
 ԳՐԺՆԸ  
 ՀԱՔՎՐ  
 ԸԶԳԵՐՎՐԴՆԸ  
 ՄԵ

	Inuktitut
መደብ ልዩነት	<p>ፈረንሳይኛ የክልላዊነት ጥያቄ ጋንጋል  ፖለቲካዊ ምክር ቤት ለፖለቲካዊ ልማት  ጋንጋል ጥያቄውን ያስተባባራል። ለፖለቲካዊ  ልዩነት ልዩነት ልዩነት ልዩነት ልዩነት 2023.  ፖለቲካዊ ልማት ልዩነት ልዩነት ልዩነት  ፈረንሳይኛ ልዩነት።</p>
ፈረንሳይኛ ልዩነት ፈረንሳይኛ የክልላዊነት ልዩነት	<p>ፈረንሳይኛ ልዩነት ልዩነት ልዩነት  ፈረንሳይኛ ልዩነት ልዩነት ልዩነት ልዩነት  ፈረንሳይኛ ልዩነት ልዩነት ልዩነት ልዩነት  ፈረንሳይኛ ልዩነት ልዩነት ልዩነት ልዩነት  ፈረንሳይኛ ልዩነት ልዩነት ልዩነት ልዩነት</p>
ፈረንሳይኛ ልዩነት	<p>ፈረንሳይኛ ልዩነት ልዩነት ልዩነት  ፈረንሳይኛ ልዩነት ልዩነት ልዩነት ልዩነት  ፈረንሳይኛ ልዩነት ልዩነት ልዩነት ልዩነት  ፈረንሳይኛ ልዩነት ልዩነት ልዩነት ልዩነት</p>



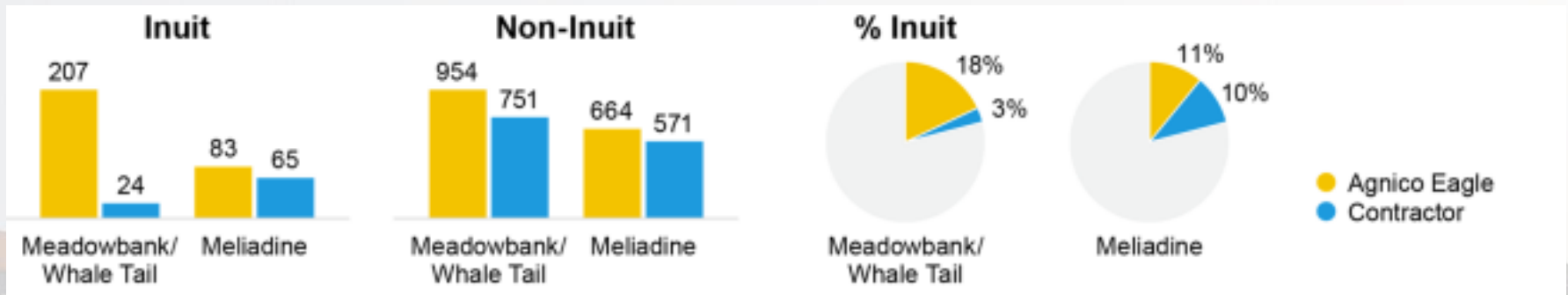
VEC	Comments
<b>Terrestrial Environment</b>	Parties raised concerns with caribou protection measures. The Proponent is planning to submit an updated Terrestrial Environmental Management Plan by the end of 2023. No other changes to terrestrial environment.
<b>Incorporation of Inuit Qaujimagatuqangit</b>	Ongoing concerns from parties and community members. Lack of follow-up with communities and lack of clarity on how knowledge is written into plans.
<b>Marine Environment</b>	Concerns from Chesterfield Inlet about community engagement. Proponent having issues hiring local marine monitors for vessels.



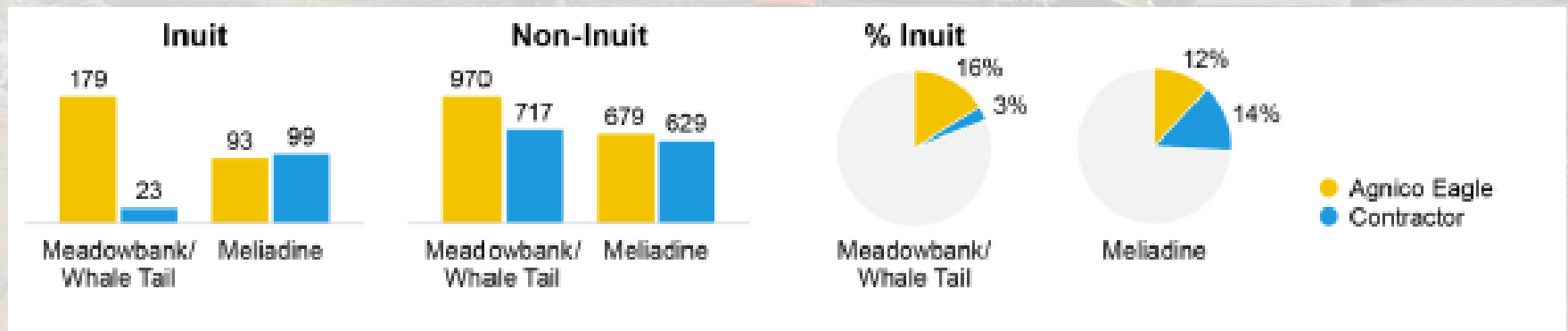
# 2023 Socio-Economic Summary

## 2023 ᐃᐅᓯᑦᐱᑦ ᐱᓄᑦᑕᐸᓂᑦᐱᑦ ᓄᐸᑕᓯᐸᓂᑦᐱᑦ

### Inuit Employment 2022 / ᐃᐅᐸᑦ ᐃᓂᓄᐸᓂᑦᐱᑦ



### Inuit Employment 2023 / ᐃᐅᐸᑦ ᐃᓂᓄᐸᓂᑦᐱᑦ

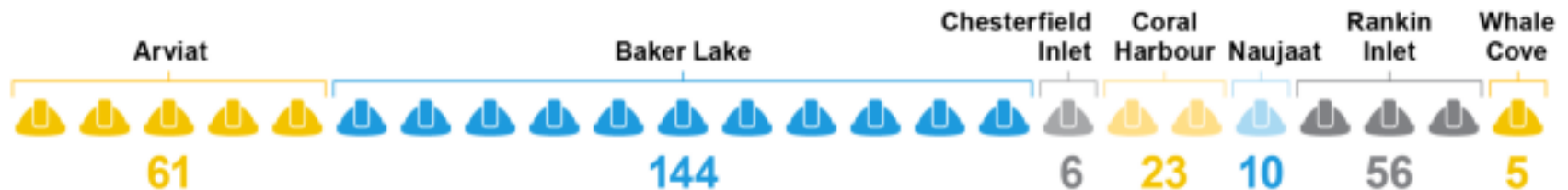


# 2023 Socio-Economic Summary

2023 ልዑካጋ ለፎርብስጋ ወልረብፋሽሃረፋ

## Employment by Community 2022 / ᐃᖃᐱᐃᖅᓴᖅ ᓄᐱᕐᓂ

**Agnico Eagle employees in 2022 by Kivalliq community (headcount):**



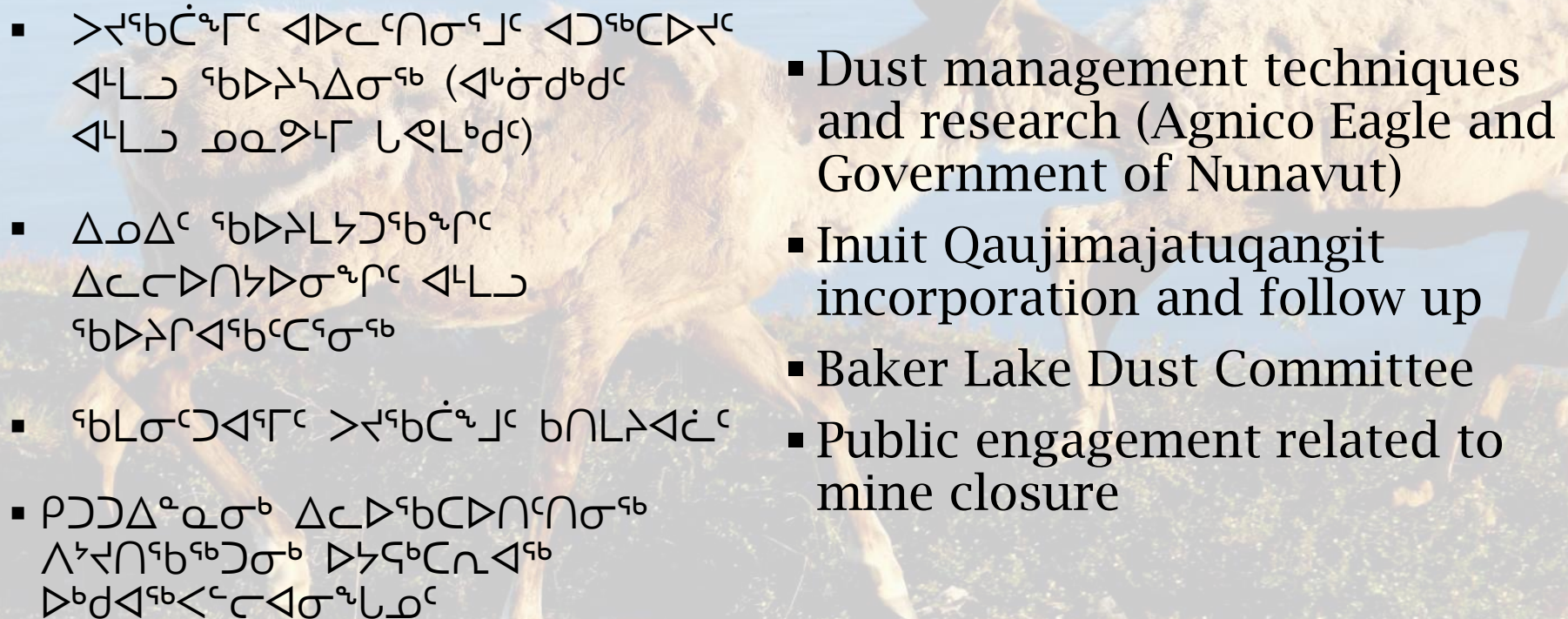
## Employment by Community 2023 / ᐃᖅᑲᓚᐱᖅᑲᓪᓴᕐ ᔨᓇᕋᕐ

**Agnico Eagle employees in 2023 by Kivalliq community (headcount):**





[illegible]

- 
- >ᑭᑦᑕᑦᑭᑦ ᐱᐅᐅᑦᑕᑦᑭᑦ ᐱᐅᑦᑕᐅᑭᑦ ᐱᑭᑭᑦ ᑦᑕᐅᑭᑦᑕᑦᑭᑦ (ᐱᑦᑕᑦᑕᑦᑕᑦ ᐱᑭᑭᑦ ᐅᑕᑦᑕᑦ ᑭᑦᑕᑦᑕᑦ)
  - ᐱᐅᐅᑦ ᑦᑕᐅᑭᑦᑕᑦᑭᑦ ᐱᐅᐅᑦᑕᑦᑭᑦ ᐱᑭᑭᑦ ᑦᑕᐅᑭᑦᑕᑦᑭᑦ
  - ᑦᑕᑕᑦᑕᑦᑕᑦ >ᑭᑦᑕᑦᑭᑦ ᑕᑕᑕᑦᑕᑦ
  - ᑕᐅᐅᐅᑦᑕᑦ ᐱᐅᐅᑦᑕᑦᑭᑦ ᐱᑭᑭᑦ ᐅᑕᑦᑕᑦᑕᑦ ᐅᑕᑦᑕᑦᑕᑦ
  - Dust management techniques and research (Agnico Eagle and Government of Nunavut)
  - Inuit Qaujimajatuqangit incorporation and follow up
  - Baker Lake Dust Committee
  - Public engagement related to mine closure

# How can you get involved?

[illegible]

Provide feedback today to staff  
or on the comment forms

$\triangleleft \triangleright \Delta^a \triangleleft \triangleright \nabla^c \nabla^a \sigma \triangleright^c \nabla^b \Gamma \Delta^a \triangleleft \triangleright \nabla^b \nabla^c$   
 $\nabla \nabla \nabla^a \nabla^b \nabla^c \sigma^b$

Review material online:

[www.nirb.ca/project/125253](http://www.nirb.ca/project/125253)  
[www.nirb.ca/project/125418](http://www.nirb.ca/project/125418)

$Cd^{+} \Delta P^{+} \delta^{+} n^{+}$

[www.nirb.ca/project/125253](http://www.nirb.ca/project/125253)  
[www.nirb.ca/project/125418](http://www.nirb.ca/project/125418)

Register for an account at [www.nirb.ca](http://www.nirb.ca) and follow the projects (03MN107 & 16MN056) to receive updates

በበናይጋብ፣ ልብናይጋብ፣ ከበጋብ፣ ልብናይጋብ፣  
[www.nirb.ca](http://www.nirb.ca) ለሰራተኛው ልብናይጋብ፣  
 (03MN107 & 16MN056) ልብናይጋብ፣  
 ልብናይጋብ፣ ልብናይጋብ፣

Submit written comments and questions: [info@nirb.ca](mailto:info@nirb.ca)

ᐅᓂᐅᓯᑲᓴᓯ ᐸᐱᓴᐃᓵᐅ:  
[info@nirb.ca](mailto:info@nirb.ca)

Phone the NLRB's office toll free:  
1-866-233-3033

ᐅᓐᑲᑦᑕᑦᑲᑦ ᐃᑦᑕᑦᑲᑦ ᐃᑦᑕᑦᑲᑦ  
ᑲᑲᑦᑲᑦᑲᑦ ᑲᑲᑦᑲᑦᑲᑦ ᐃᑦᑕᑦᑲᑦ  
1-866-233-3033



# Thank you

# Matna

 $L^{\infty}_Q$ 

# Questions?

◀ ԳԵՐՈՆԿ ԳԵՂԸ?

