

8. Closure

We trust that this report meets your requirements at this time. Please contact us should you have any questions or concerns or require additional information in support of this work.

Yours sincerely,

LORAX ENVIRONMENTAL SERVICES LTD.

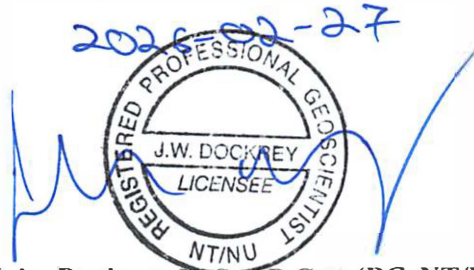
Prepared by:



Scott Jackson, M.Sc., P.GEO. (BC, NT/NU)
Senior Hydrologist

Handwritten signature of Okan Aygün in black ink.

Okan Aygün, Ph.D., E.I.T. (BC)
Numerical Modeller



John Dockrey, M.Sc., P.GEO (BC, NT/NU, ON)
Senior Geochemist

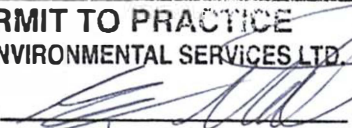
Handwritten signature of Nicole Marsh in blue ink.

Nicole Marsh, M.Sc., P.GEO (BC)
Geochemist

Reviewed by:

Handwritten signature of Alan Martin in black ink.

Alan Martin, M.Sc., P.Geo, RPBio (BC)
Principal, Senior Biogeochemist

PERMIT TO PRACTICE LORAX ENVIRONMENTAL SERVICES LTD.
Signature 
Date <u>February 27, 2026</u>
PERMIT NUMBER: P 1487 NT/NU Association of Professional Engineers and Geoscientists

References



AGNICO EAGLE

References

- Agnico Eagle Mines Ltd. (2016). *Whale Tail Pit and Haul Road Final Environmental Impact Statement and Type A Water Licence Application (2016 FEIS)*. Submitted to the Nunavut Impact Review Board (NIRB) and Nunavut Water Board (NWB) by Agnico Eagle Mines Ltd. June 30, 2016.
- Agnico Eagle Mines Ltd. (2020). *Whale Tail Pit Project – Interim Reclamation and Closure Plan*. July 2020. 135 pp.
- Agnico Eagle Mines Ltd. (2021). *Whale Tail Pit Expansion Project: Adaptive Management Plan v1.5*. Agnico Eagle Mines Limited – Meadowbank Division. July 28, 2021. 23 pp.
- Agnico Eagle Mines Ltd. (2022). *Whale Tail Project: Water Management Plan v9*. Agnico Eagle Mines Limited – Meadowbank Division. March 2022. 161 pp.
- Bernhard, A. (2010) The Nitrogen Cycle: Processes, Players, and Human Impact. *Nature Education Knowledge* 3(10):25.
- Choppin, G., Liljenzin, J. O., & Rydberg, J. (2002). *Radiochemistry and nuclear chemistry – 3rd Edition*. Butterworth-Heinemann.
- Christophersen, N. and H.M. Seip. (1982). *A model for streamwater chemistry at Birkenes, Norway*. *Water Resources Research*. 18:4, 977-996.
- ERM Consultants Canada Ltd. (2020). *Whale Tail Pit Expansion Project – Fish Habitat Offsetting Plan*. Prepared for Agnico Eagle Mines Ltd. by ERM Consultants Canada Ltd. March 2020. 951 pp.
- Golder Associates Ltd. (2017). *Whale Tail Pit - Expansion Project – 6-C: Addendum 2016 Hydrology Baseline (2016 FEIS)*. 088-1656381 Ver 1. Prepared for Agnico Eagle Mines Ltd. by Golder Associates Ltd. January 2017. 121 pp.
- Golder Associates Ltd. (2018a). *Whale Tail Pit - Expansion Project – Appendix 6-O: Addendum Mean Annual Water Balance (2018 FEIS)*. 1789310_204_RPT_Rev1. Prepared for Agnico Eagle Mines Ltd. by Golder Associates Ltd. November 2018. 198 pp.
- Golder Associates Ltd. (2018b). *Whale Tail Pit - Expansion Project – Appendix 6-H: Addendum Mine Site and Downstream Receiving Water Quality Predictions (2018 FEIS)*. 1789310-237-RPT-Rev0. Prepared for Agnico Eagle Mines Ltd. by Golder Associates Ltd. November 2018. 230 pp.

- Golder Associates Ltd. (2019a). *Whale Tail Pit - Expansion Project: 2019 Mean Annual Water Balance Update*. 18108905-294-RPT-Rev1. Prepared for Agnico Eagle Mines Ltd. by Golder Associates Ltd. May 2019. 284 pp.
- Golder Associates Ltd. (2019b). *Mine Site and Downstream Receiving Water Quality Predictions Whale Tail Pit - Expansion Project*. 18108905-308-RPT-Rev0. Prepared for Agnico Eagle Mines Ltd. by Golder Associates Ltd. May 2019. 229 pp.
- Golder Associates Ltd. (2019c). *Whale Tail Expansion Project - DFO Regulatory Support Conceptual Design - Fish Passage at Lake A18 Sill*. Prepared for Agnico Eagle Mines Ltd. by Golder Associates Ltd. December 2019. 45 pp.
- Golder Associates Ltd. (2019d). *Whale Tail Pit – Expansion Project – Appendix H.4: Updated Hydrogeological Assessment (2019 NWB Water Licence 2AM-WTP1826 Amendment)*. 18108905-291-TM-Rev0. Prepared for Agnico Eagle Mines Ltd. by Golder Associates Ltd. May 2019. 31 pp.
- Golder Associates Ltd. (2019e). *Whale Tail Pit – Expansion Project – Appendix H.2: Mine Site and Downstream Receiving Water Quality Predictions (2019 NWB Water Licence 2AM-WTP1826 Amendment)*. 18108905-308-TM-Rev0. Prepared for Agnico Eagle Mines Ltd. by Golder Associates Ltd. May 2019.
- Golder Associates Ltd. (2021). *Whale Tail Project: IVR and Whale Tail Pit Pushback*. 21459323-521-RPT-Rev0. Prepared for Agnico Eagle Mines Ltd. by Golder Associates Ltd. June 8, 2021. 300 pp.
- Golder Associates Ltd. (2022). *Whale Tail Pit Project – 2021 Groundwater Management Monitoring Report*. Technical memorandum prepared for Agnico Eagle Mines Ltd. Doc No. 21452766–TM–547–Rev0. Issued March 28, 2022.
- Hargreaves, G. H., and Samani, Z. (1985). Reference crop evapotranspiration from ambient air temperature, American Society of Agriculture Engineering Meeting, Chicago, Paper 85–2517.
- Lorax Environmental Services Ltd. (2023). *Whale Tail Modification: Water Balance and Water Quality Model – Technical Report*. Prepared for Agnico Eagle Mines Ltd. by Lorax Environmental Services Ltd. June 8, 2023. 125 pp.
- Lorax Environmental Services Ltd. (2024a). *Whale Tail ELOM: Water Balance and Water Quality Model – Technical Report*. Prepared for Agnico Eagle Mines Ltd. by Lorax Environmental Services Ltd. June 8, 2023. 458 pp.

- Lorax Environmental Service Ltd. (2024b). *Whale Tail ELOM Hydrogeological Model*. Prepared for Agnico Eagle Mines Ltd. by Lorax Environmental Service Ltd. April 2024.
- Lorax Environmental Service Ltd. (2025). *Whale Tail Mine (Piquganiq): Water Balance and Water Quality Model Technical Report for the 2024 Annual Report*. Prepared for Agnico Eagle Mines Ltd. by Lorax Environmental Service Ltd. February 2025.
- Lorax Environmental Service Ltd. (2026). *Whale Tail 2025 Hydrogeological Model Technical Report*. Prepared for Agnico Eagle Mines Ltd. by Lorax Environmental Service Ltd. January 2026.
- Martin, A.J., Crusius, J., McNee, J.J., and Yanful, E.K. (2003). The mobility of radium-226 and trace metals in pre-oxidized subaqueous uranium mill tailings. *Applied Geochemistry*.
- Moriasi, D.N., J.G. Arnold, M.W. Van Liew, R.L. Binger, R.D. Harmel, and T.L. Veith. (2007). Model Evaluation Guidelines for Systematic Quantification of Accuracy in Watershed Simulations. *Transactions of the American Society of Agricultural and Biological Engineers*. 50:3, 885-900.
- Okane Consultants Ltd. (2019). *Landform Water Balance Modelling of Whale Tail and IVR WRSF. Memorandum prepared by Okane Consultants for Agnico Eagle Mines Ltd.* Report reference 948-011-M-006 Rev3. May 10, 2019.
- Okane Consultants Ltd. (2022). *Whale Tail Extension Geotechnical and Thermal Design Basis_v3*. Prepared for Agnico Eagle Mines Ltd. by Okane Consultants Ltd. October 2022. 48 pp.
- Parkhurst, D. L., & Appelo, C. (1999). User's guide to PHREEQC (Version 2) (Equations on which the program is based). *Water-Resources Investigations Report*, 99, 4259.
- Seip, H.M., R. Seip, R., P.J. Dillon, and E. de Grosbois. 1985. Model of sulphate concentration in a small stream in the Harp Lake catchment, Ontario. *Can. J. Fish Aquat. Sci.* 42: 927-937.
- SNC-Lavalin Inc. 2020. *Detailed engineering of water management and geotechnical infrastructures at Amaruq Design report of South Whale Tail Diversion Channel*. File: 669635-2000-40ER-0001-00. Prepared for Agnico Eagle Mines Ltd. by SNC-Lavalin Inc. 167 pp.
- WSP Golder. 2022. *Updated Hydrogeology Modelling – Extension Model*. Prepared for Agnico Eagle Mines Ltd. By Golder Associates Ltd. Reference No. 22513890-941-R-Rev0-2000. 81 pp.

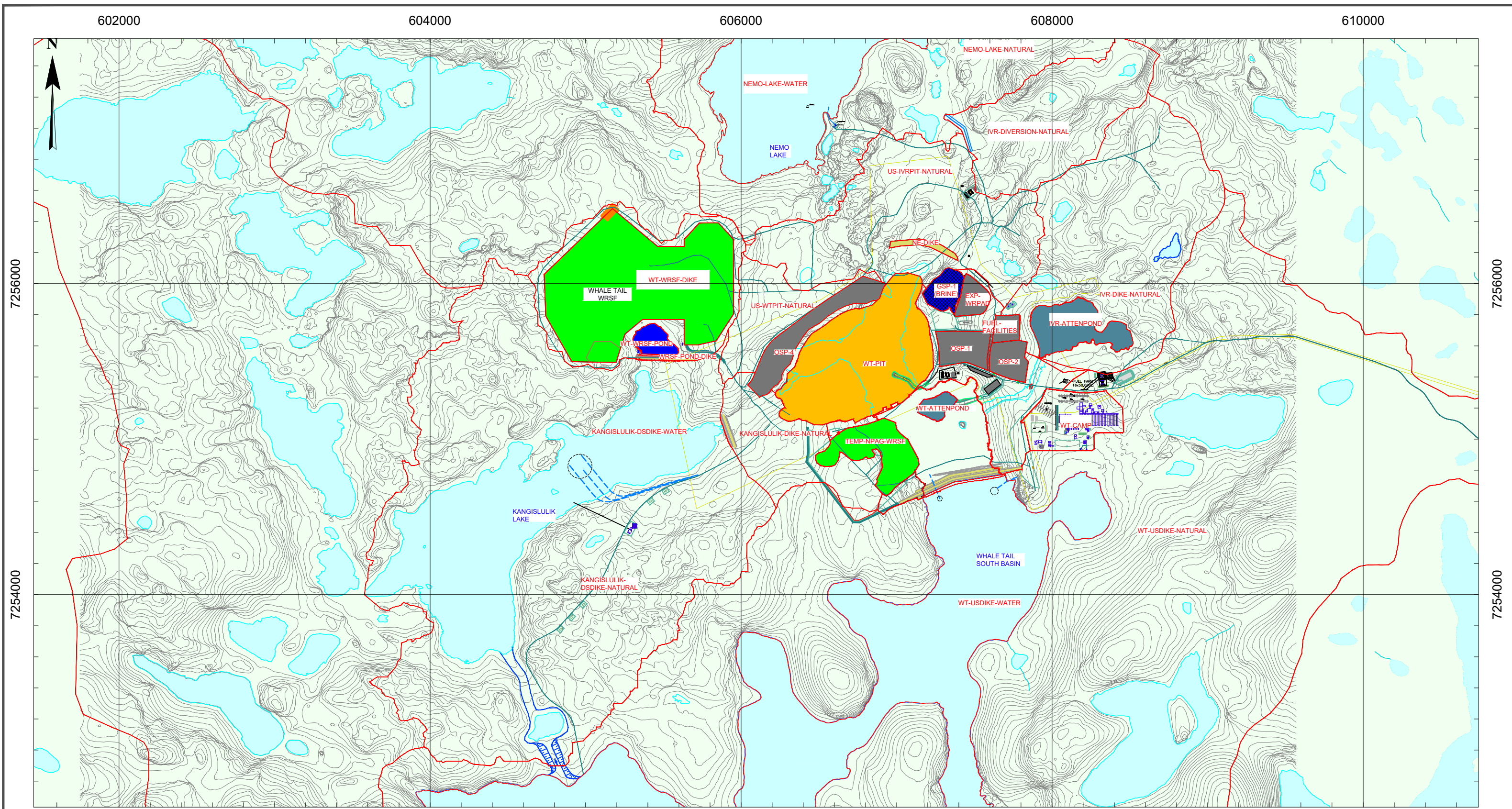
Appendix A: Whale Tail Mine Annual Layouts and Catchment Areas

APPENDIX A.1: WHALE TAIL MINE ANNUAL LAYOUTS

APPENDIX A.2: WHALE TAIL MINE ANNUAL CATCHMENT AREAS



AGNICO EAGLE



LEGEND			
	WATER BALANCE CATCHMENT		CONTACT WATER POND
	MAJOR AND MINOR CONTOURS FOR PITS		SALINE POND
	EXISTING GROUND		WATERBODY (NATURAL)
	HAUL ROAD		BACKFILL
	ROAD, SALT PROTECTION		OPEN PIT
	SERVICE ROAD		WASTE ROCK STORAGE FACILITY
	WATERCOURSE		STOCKPILE
	PIPE LINE		
	DIVERSION CHANNEL		
	DIKE		

DATE SAVED:	Feb 19, 2026
DRAWN BY:	GM
REVIEWED:	SJ
VERSION:	1

Original Drawing:
Drawing Number 2022Q4. Amaruq Mine
Site General Arrangement.
Produced May 2, 2019 by Agnico Eagle.

CLIENT:

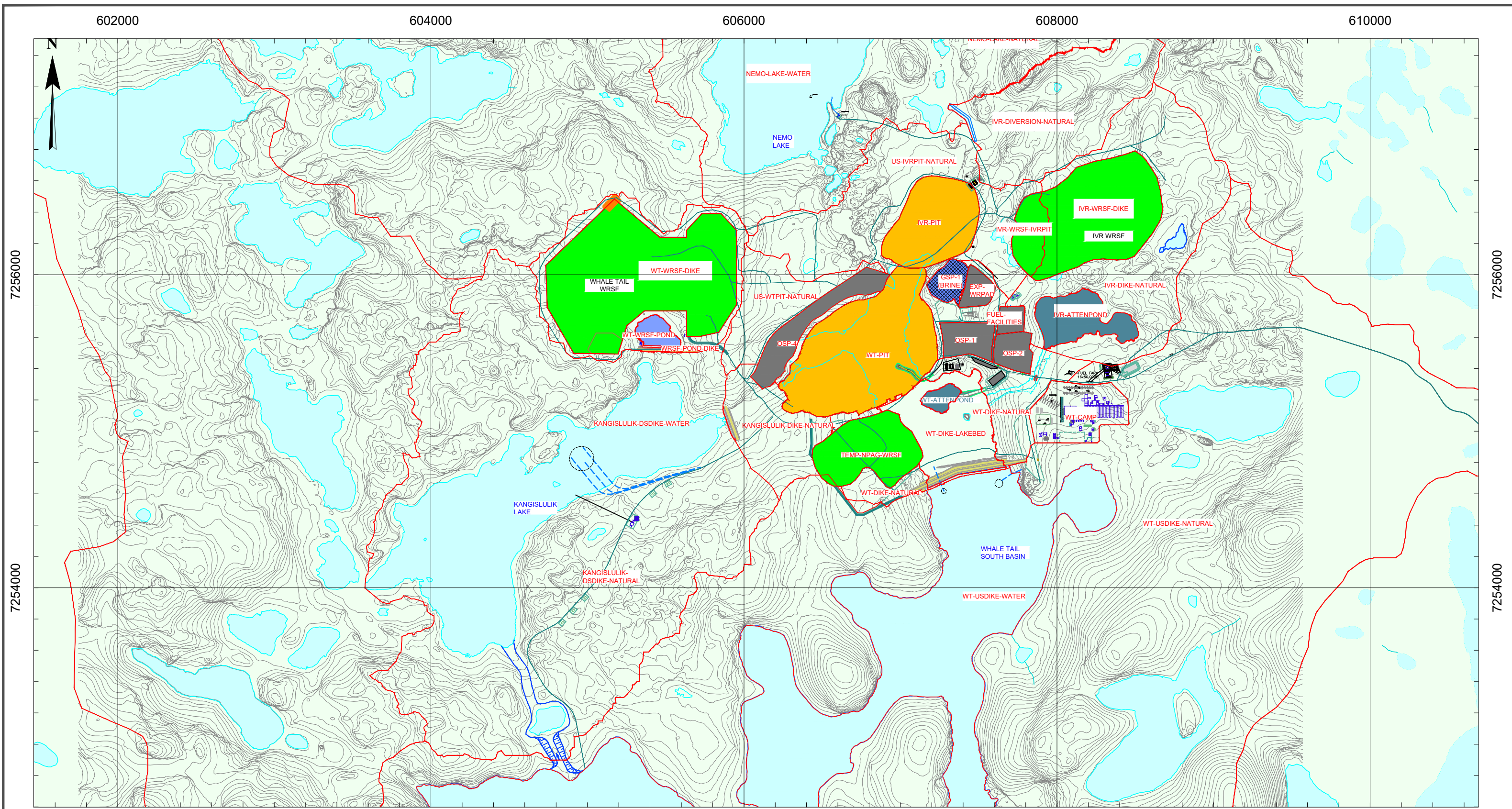


AGNICO EAGLE



LORAX ENVIRONMENTAL

PROJECT:	Whale Tail Mine WB/WQM
TITLE:	Whale Tail Site Layout with Catchments - 2020
PROJECT #:	A766-2
FIGURE:	A1.1



LEGEND

	WATER BALANCE CATCHMENT		CONTACT WATER POND		DIKE
	MAJOR AND MINOR CONTOURS FOR PITS		SALINE POND		OPEN PIT
	EXISTING GROUND		WATERBODY (NATURAL)		WASTE ROCK STORAGE FACILITY
	HAUL ROAD		BACKFILL		
	ROAD, SALT PROTECTION		STOCKPILE		
	SERVICE ROAD				
	WATERCOURSE				
	PIPE LINE				
	DIVERSION CHANNEL				

DATE SAVED: Feb 19, 2026
DRAWN BY: GM
REVIEWED: SJ
VERSION: 1

Original Drawing:
 Drawing Number 2022Q4. Amaruq Mine
 Site General Arrangement.
 Produced May 2, 2019 by Agnico Eagle.

CLIENT:



AGNICO EAGLE



LORAX ENVIRONMENTAL

PROJECT:

Whale Tail Mine WB/WQM

TITLE:

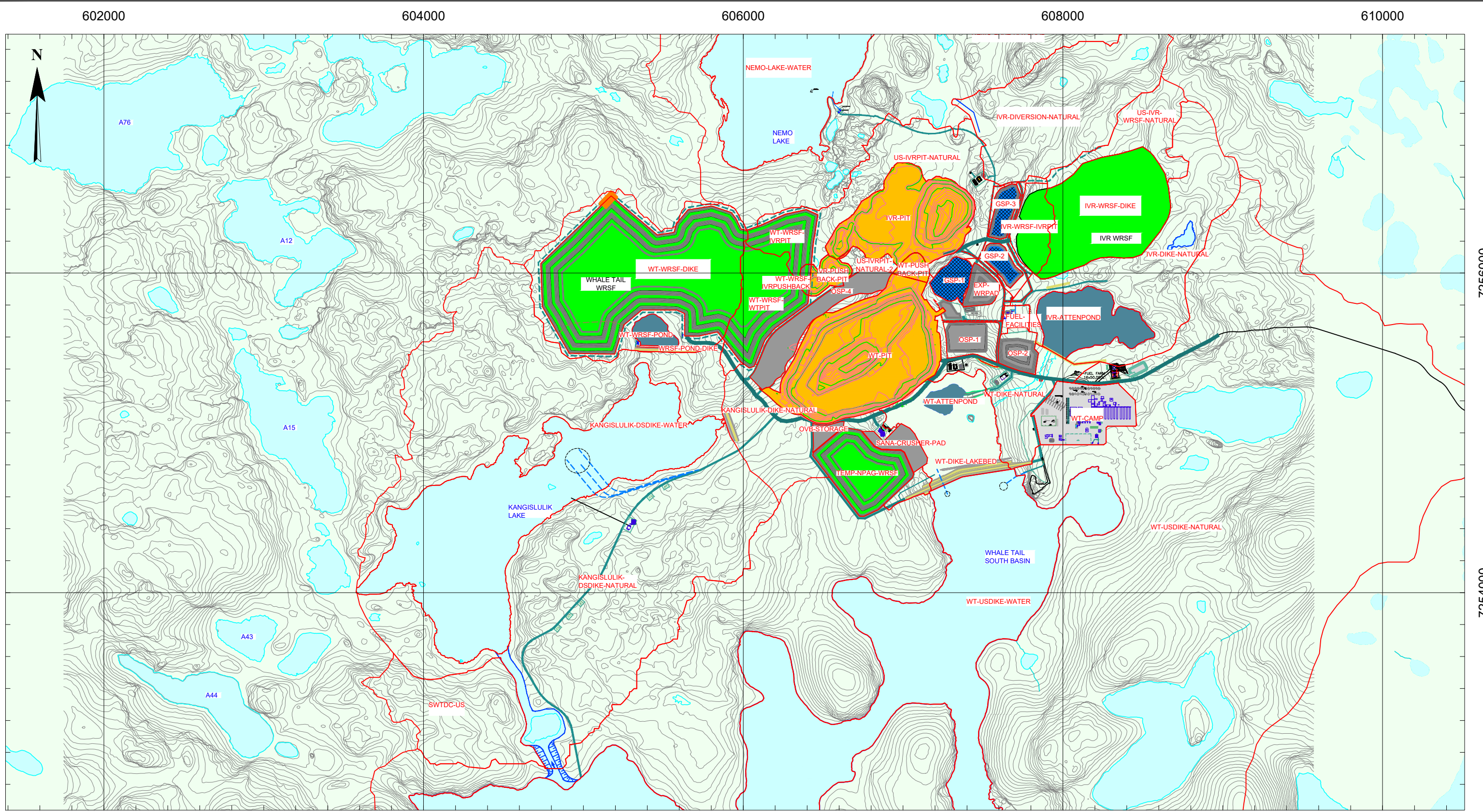
Whale Tail Site Layout with Catchments - 2021

PROJECT #:

A766-2

FIGURE:

A1.2



LEGEND			
	WATER BALANCE CATCHMENT		CONTACT WATER POND
	MAJOR AND MINOR CONTOURS FOR PITS		SALINE POND
	EXISTING GROUND		WATERBODY (NATURAL)
	HAUL ROAD		BACKFILL
	ROAD, SALT PROTECTION		STOCKPILE
	SERVICE ROAD		DIKE
	WATERCOURSE		OPEN PIT
	PIPE LINE		WASTE ROCK STORAGE FACILITY
	DIVERSION CHANNEL		

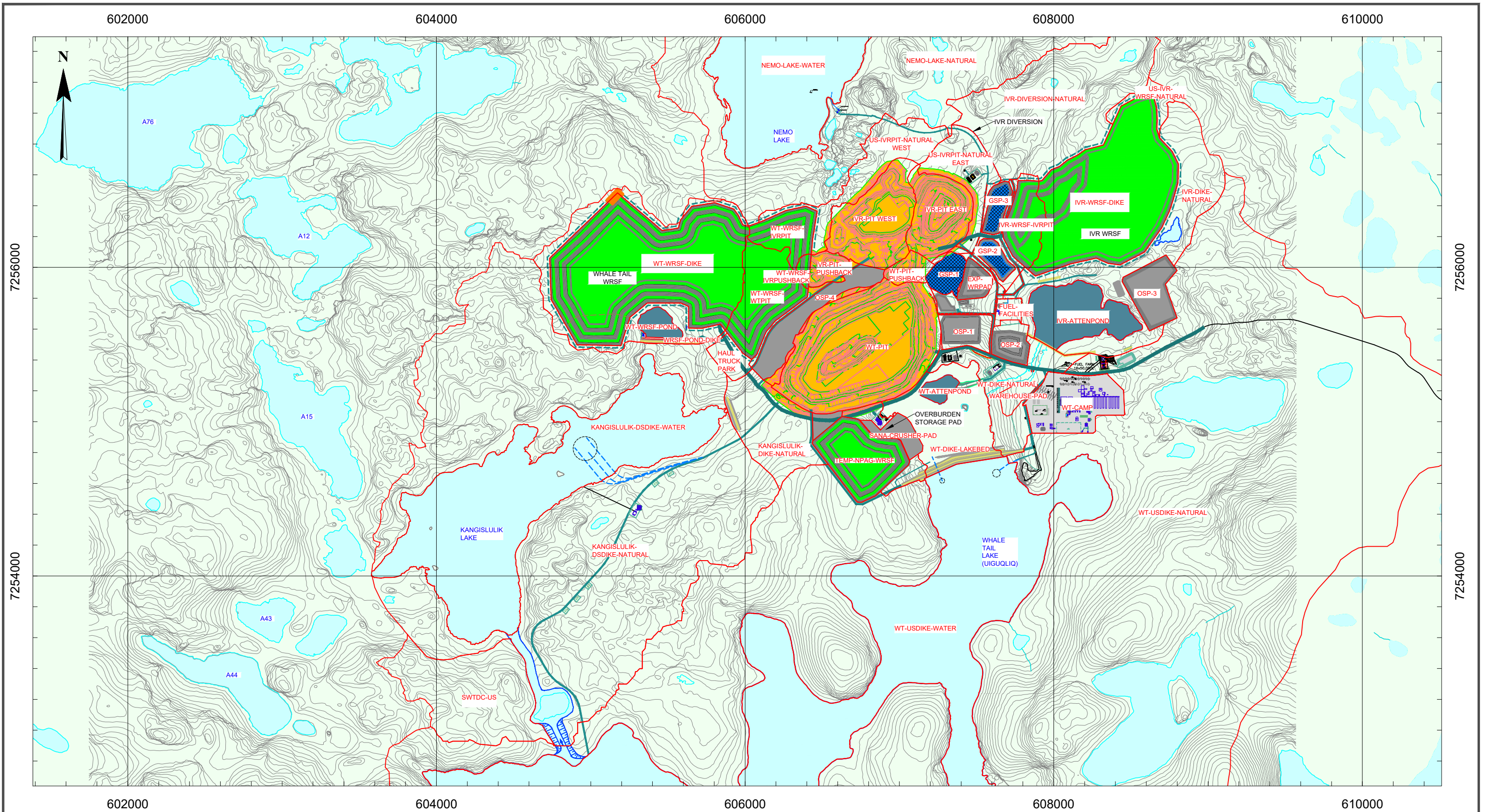
DATE SAVED:	Feb 19, 2026
DRAWN BY:	GM
REVIEWED:	SJ
VERSION:	1

Original Drawing:
 Drawing Number 2022Q4. Amaruq Mine
 Site General Arrangement.
 Produced May 2, 2019 by Agnico Eagle.

CLIENT:




PROJECT:	Whale Tail Mine WB/WQM	
TITLE:	Whale Tail Site Layout with Catchments - 2022	
PROJECT #:	A766-2	FIGURE: A1.3



LEGEND

- | | | | | | |
|--|-----------------------------------|--|---------------------|--|-----------------------------|
| | WATER BALANCE CATCHMENT | | CONTACT WATER POND | | DIKE |
| | MAJOR AND MINOR CONTOURS FOR PITS | | SALINE POND | | OPEN PIT |
| | EXISTING GROUND | | WATERBODY (NATURAL) | | WASTE ROCK STORAGE FACILITY |
| | HAUL ROAD | | BACKFILL | | STOCKPILE |
| | ROAD, SALT PROTECTION | | | | |
| | SERVICE ROAD | | | | |
| | WATERCOURSE | | | | |
| | PIPE LINE | | | | |
| | DIVERSION CHANNEL | | | | |

DATE SAVED: Feb 19, 2026
DRAWN BY: DM
REVIEWED: SJ
VERSION: 1

Original Drawing:
 Drawing Number 2022Q4. Amaruq Mine
 Site General Arrangement.
 Produced May 2, 2019 by Agnico Eagle.

CLIENT:



PROJECT:

Whale Tail Mine WB/WQM

TITLE:

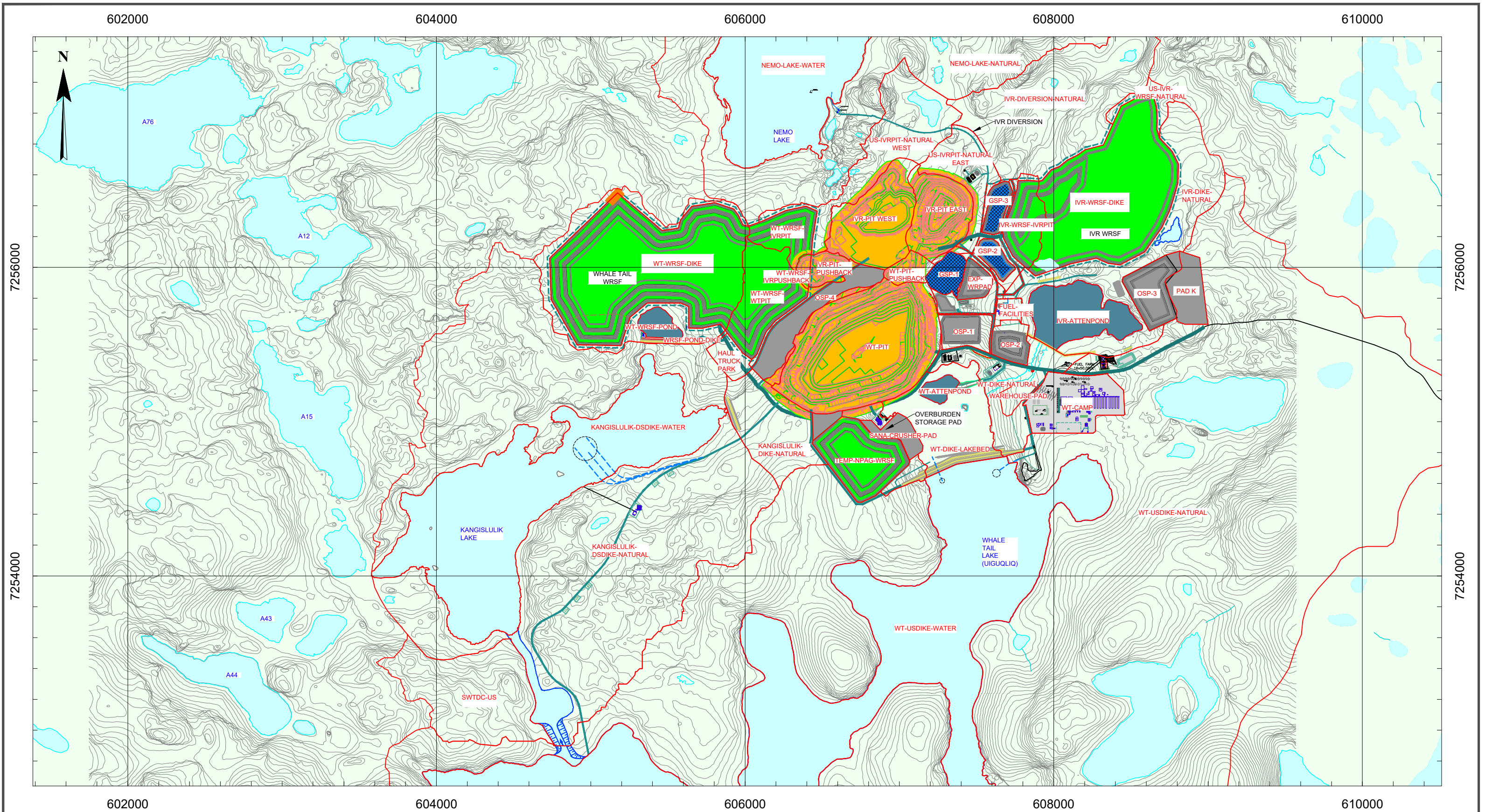
Whale Tail Site Layout with
Catchments - 2023

PROJECT #:

A766-2

FIGURE:

A1.4



LEGEND

- | | | |
|-----------------------------------|---------------------|-----------------------------|
| WATER BALANCE CATCHMENT | CONTACT WATER POND | DIKE |
| MAJOR AND MINOR CONTOURS FOR PITS | SALINE POND | OPEN PIT |
| EXISTING GROUND | WATERBODY (NATURAL) | WASTE ROCK STORAGE FACILITY |
| HAUL ROAD | BACKFILL | STOCKPILE |
| ROAD, SALT PROTECTION | SERVICE ROAD | |
| WATERCOURSE | PIPE LINE | |
| DIVERSION CHANNEL | | |

DATE SAVED: Feb 19, 2026
 DRAWN BY: DM
 REVIEWED: SJ
 VERSION: 1

Original Drawing:
 Drawing Number 2022Q4. Amaruq Mine
 Site General Arrangement.
 Produced May 2, 2019 by Agnico Eagle.

CLIENT:



PROJECT:

Whale Tail Mine WB/WQM

TITLE:

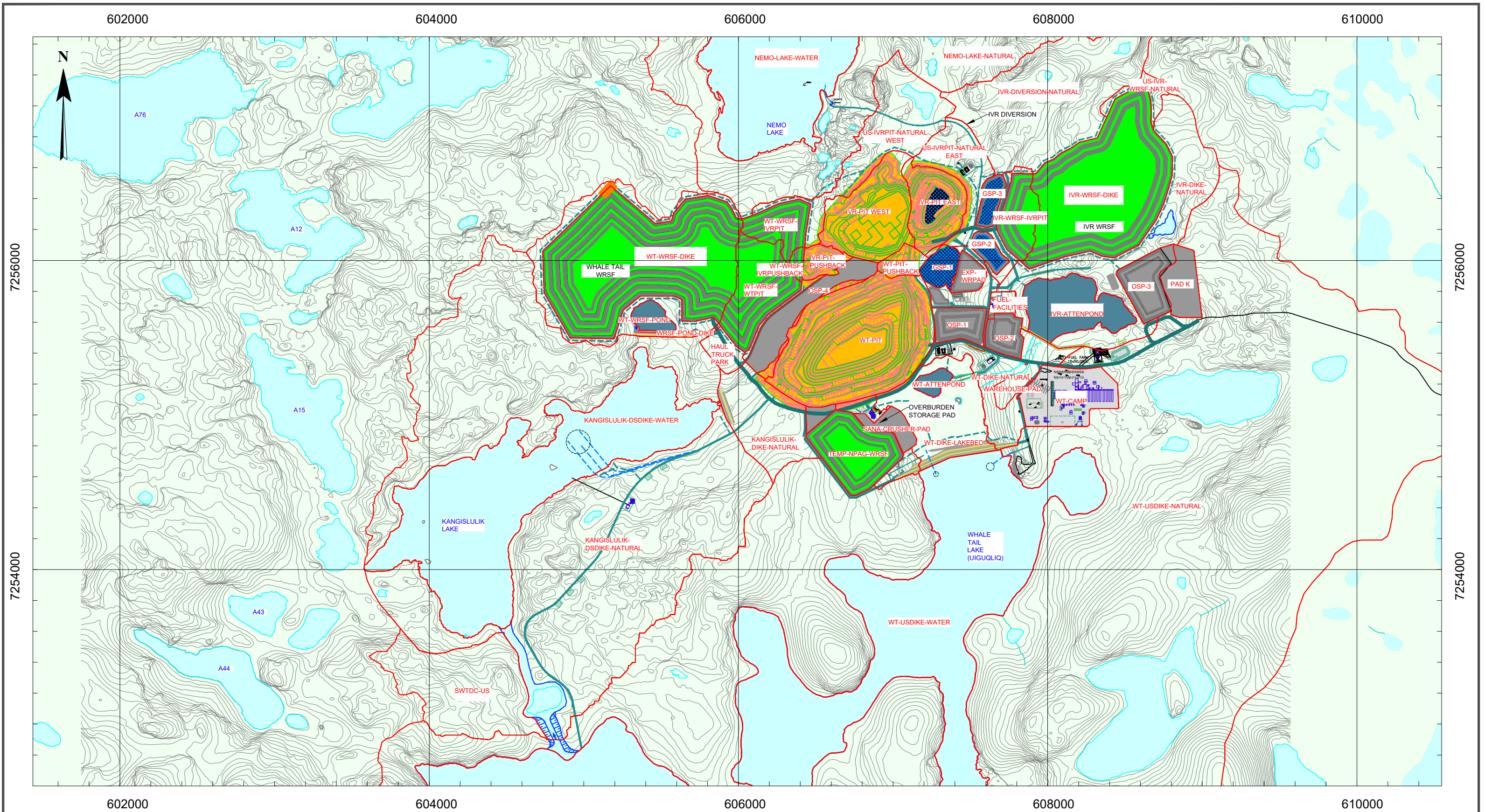
Whale Tail Site Layout with
 Catchments - 2024

PROJECT #:

A766-2

FIGURE:

A1.5



LEGEND

- | | | | | | |
|--|-----------------------------------|--|---------------------|--|-----------------------------|
| | WATER BALANCE CATCHMENT | | CONTACT WATER POND | | DIKE |
| | MAJOR AND MINOR CONTOURS FOR PITS | | SALINE POND | | OPEN PIT |
| | EXISTING GROUND | | WATERBODY (NATURAL) | | WASTE ROCK STORAGE FACILITY |
| | HAUL ROAD | | BACKFILL | | |
| | ROAD, SALT PROTECTION | | STOCKPILE | | |
| | SERVICE ROAD | | | | |
| | WATERCOURSE | | | | |
| | PIPE LINE | | | | |
| | DIVERSION CHANNEL | | | | |

DATE SAVED: Mar 22, 2024
DRAWN BY: DM
REVIEWED: SJ
VERSION: 1

Original Drawing:
 Drawing Number 2024Q4. Amaruq Mine
 Site General Arrangement.
 Produced May 2, 2019 by Agnico Eagle.

CLIENT:



PROJECT:

Whale Tail Mine WB/WQM

TITLE:

Whale Tail Site Layout with
Catchments - 2025

PROJECT #:

A766-2

FIGURE:

A1.6