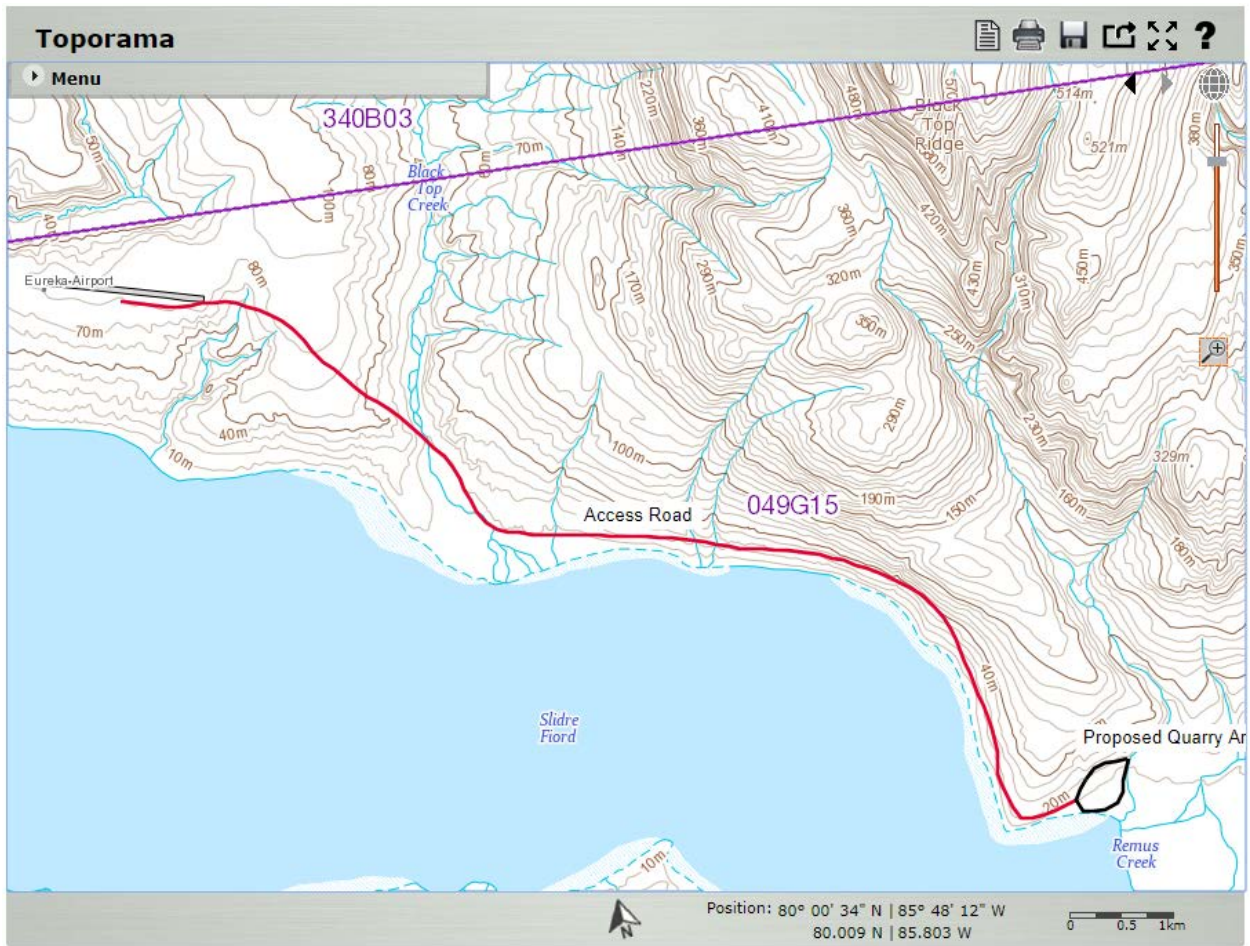
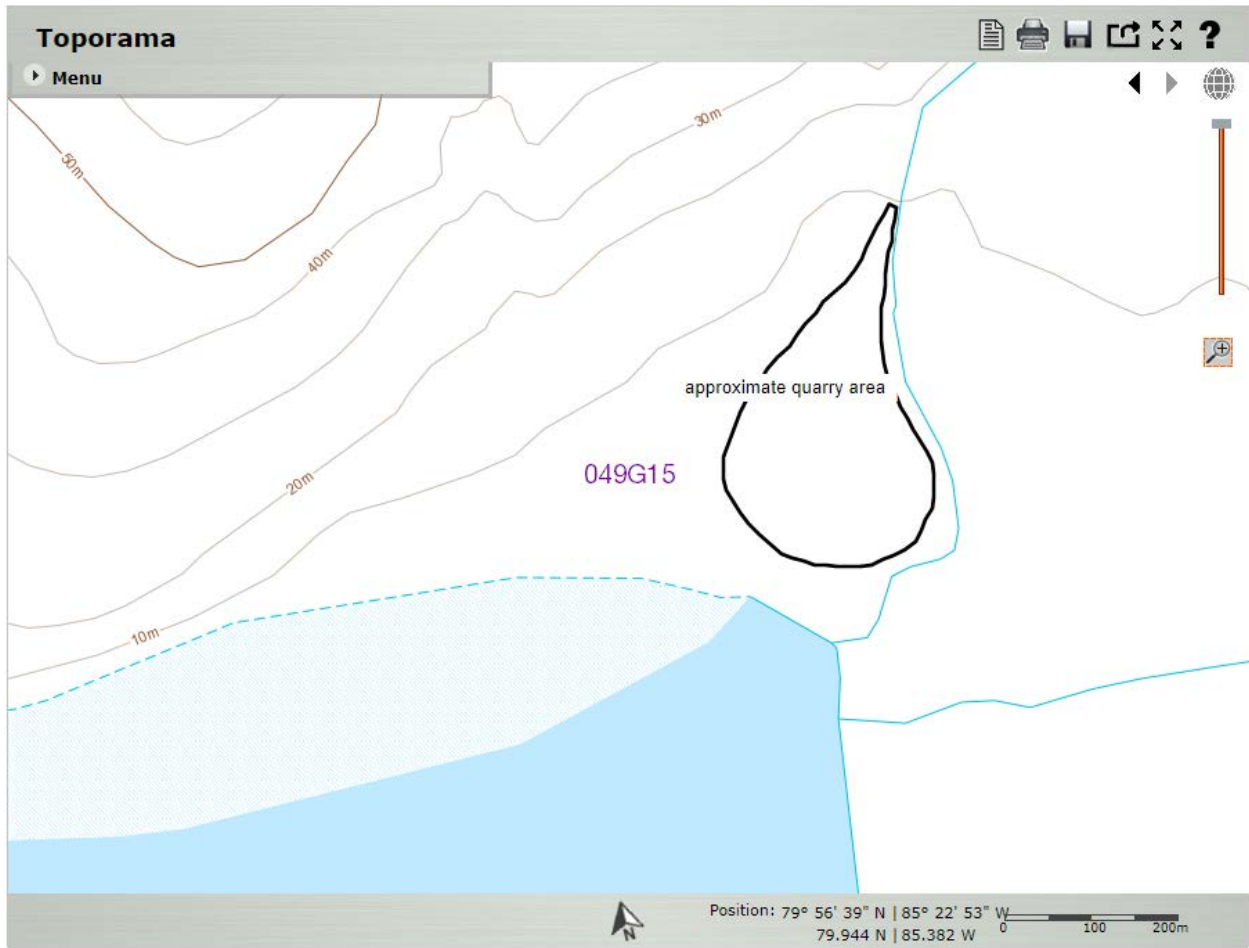


NRC Map at 1:50,000



NRC Map at 1:5000



ARCHAEOLOGICAL IMPACT ASSESSMENT

Eureka High Arctic Weather Station Project Improvements – West Remus Creek Borrow Source/Access Road

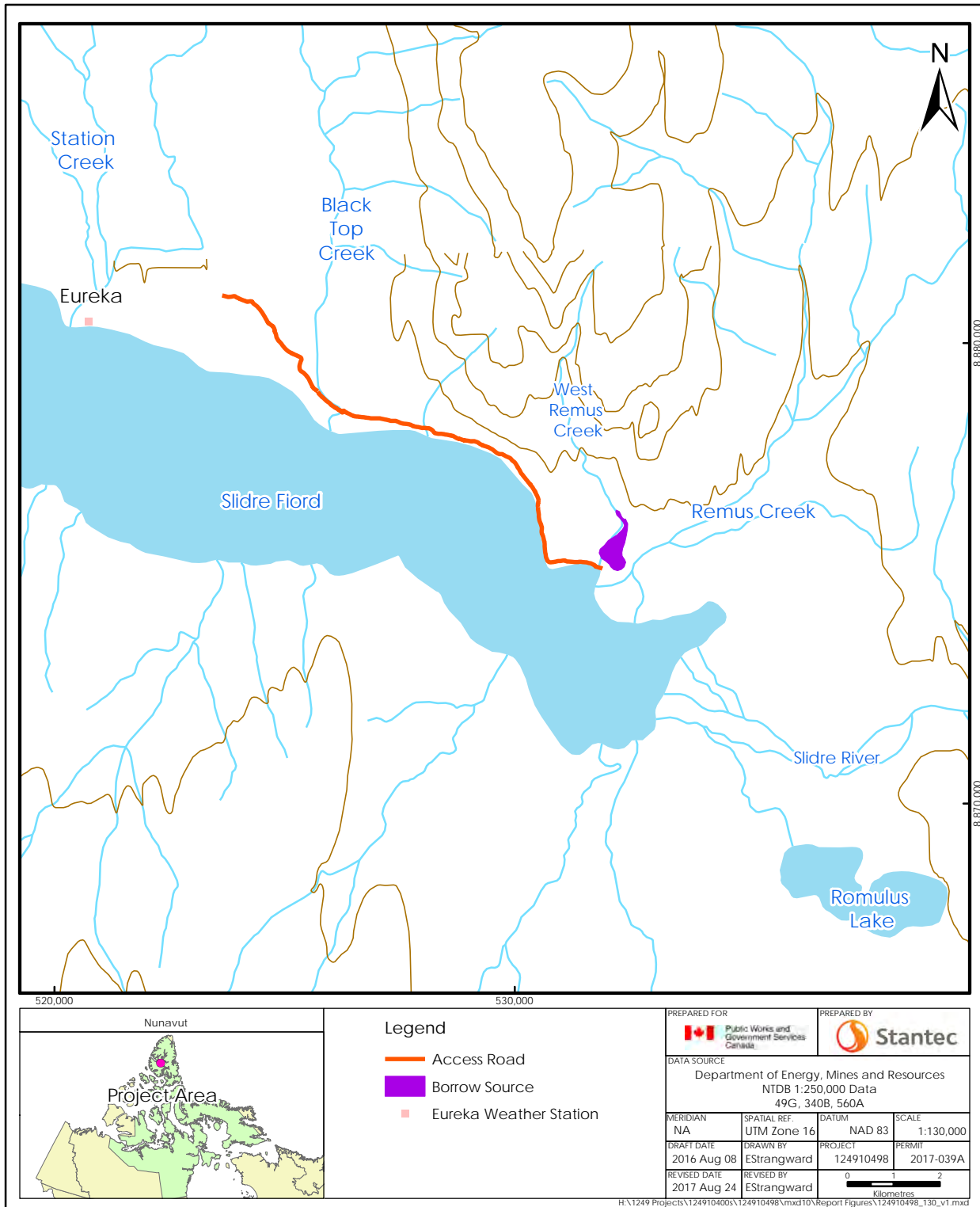
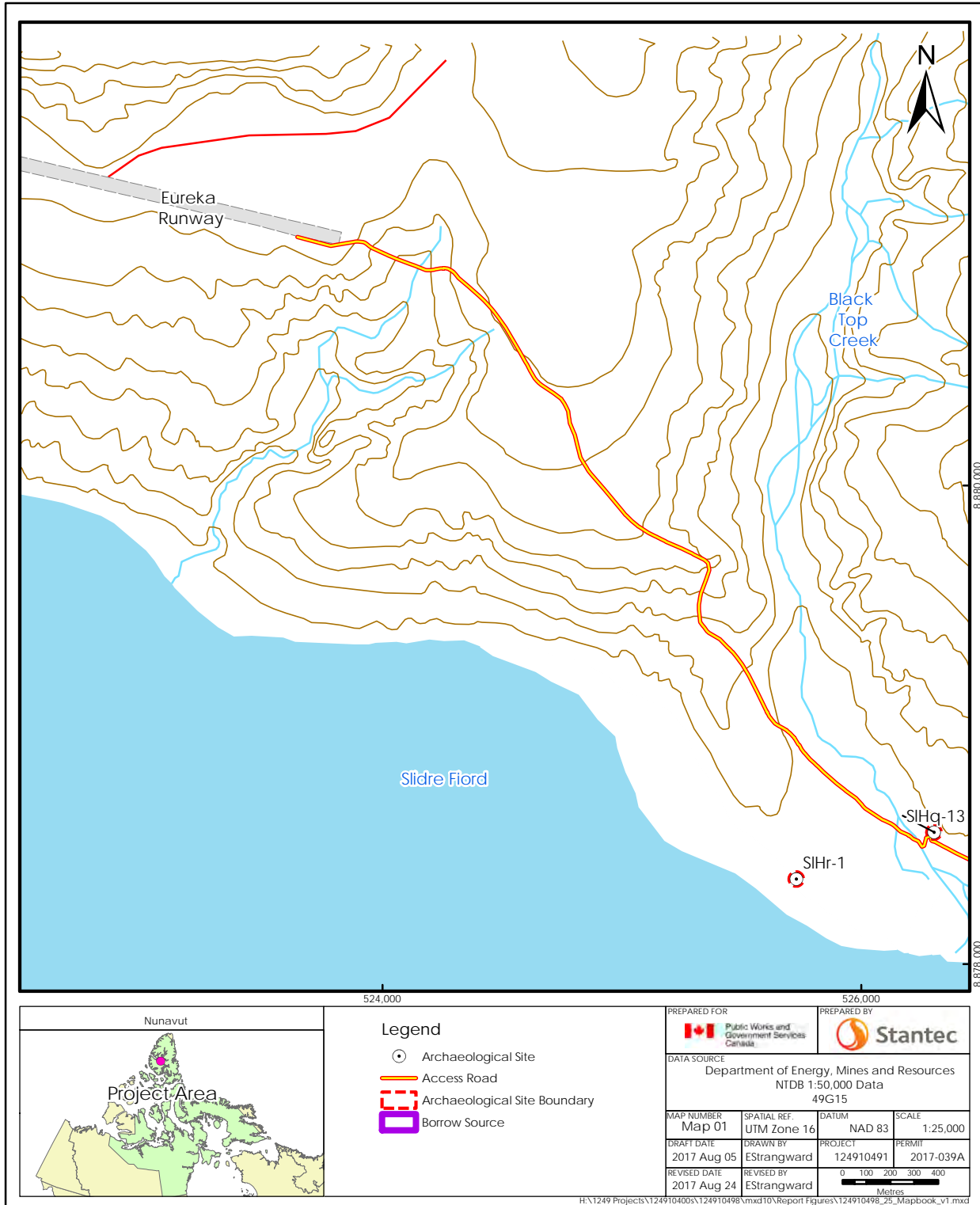


Figure 1-2 Location of Project



ARCHAEOLOGICAL IMPACT ASSESSMENT
Eureka High Arctic Weather Station Project Improvements – West Remus Creek Borrow
Source/Access Road



Location of Project, topographic maps - Map 1 of 3



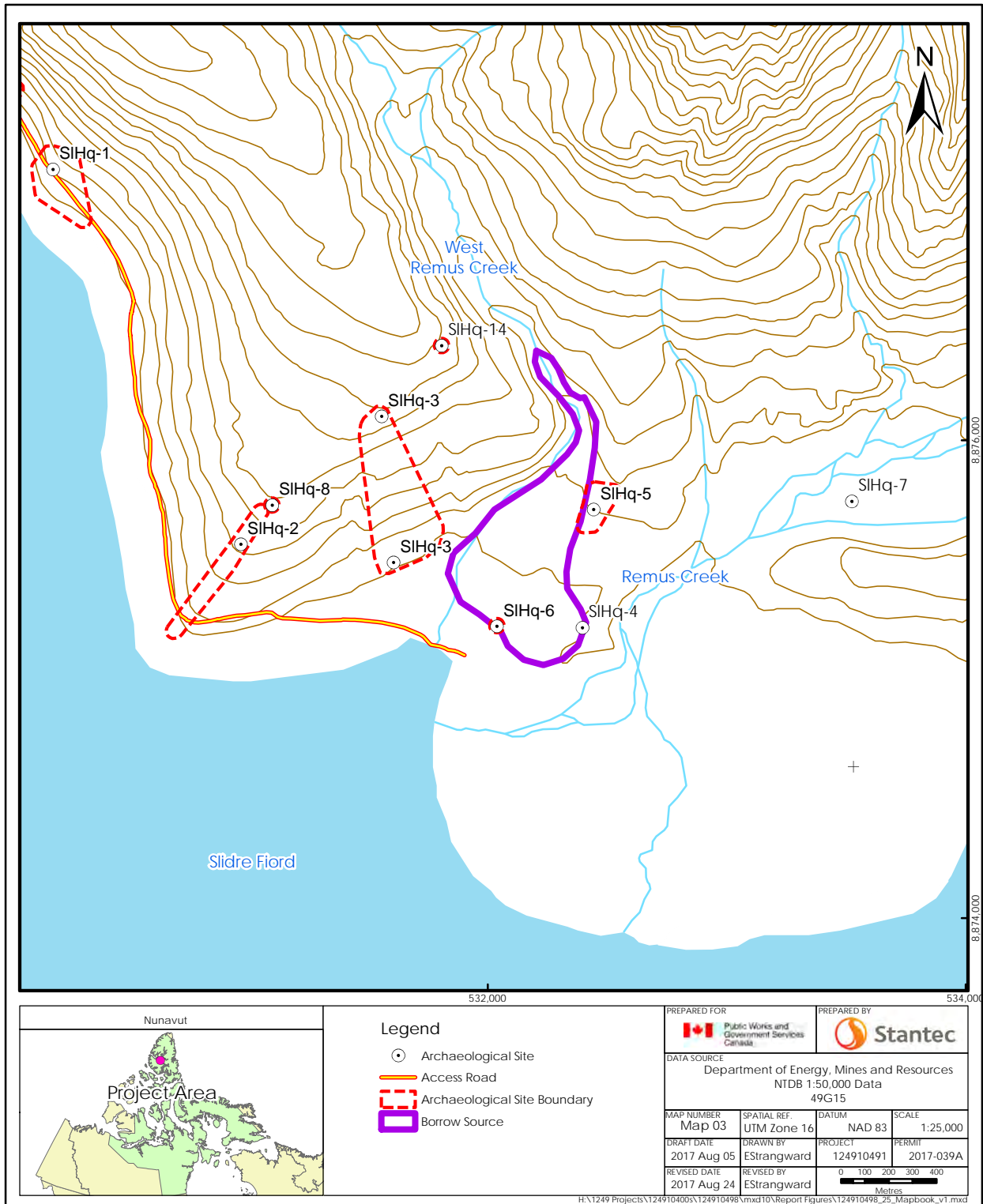
ARCHAEOLOGICAL IMPACT ASSESSMENT
Eureka High Arctic Weather Station Project Improvements – West Remus Creek Borrow
Source/Access Road



Location of Project, **topographic maps - Map 2 of 3**



ARCHAEOLOGICAL IMPACT ASSESSMENT
Eureka High Arctic Weather Station Project Improvements – West Remus Creek Borrow
Source/Access Road



Location of Project, topographic maps - Map 3 of 3



ARCHAEOLOGICAL IMPACT ASSESSMENT
Eureka High Arctic Weather Station Project Improvements – West Remus Creek Borrow
Source/Access Road



Location of Project, **Orthophoto Imagery - Map 1 of 3**



ARCHAEOLOGICAL IMPACT ASSESSMENT
Eureka High Arctic Weather Station Project Improvements – West Remus Creek Borrow
Source/Access Road



Location of Project, **Orthophoto Imagery - Map 2 of 3**

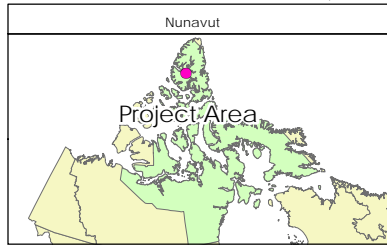
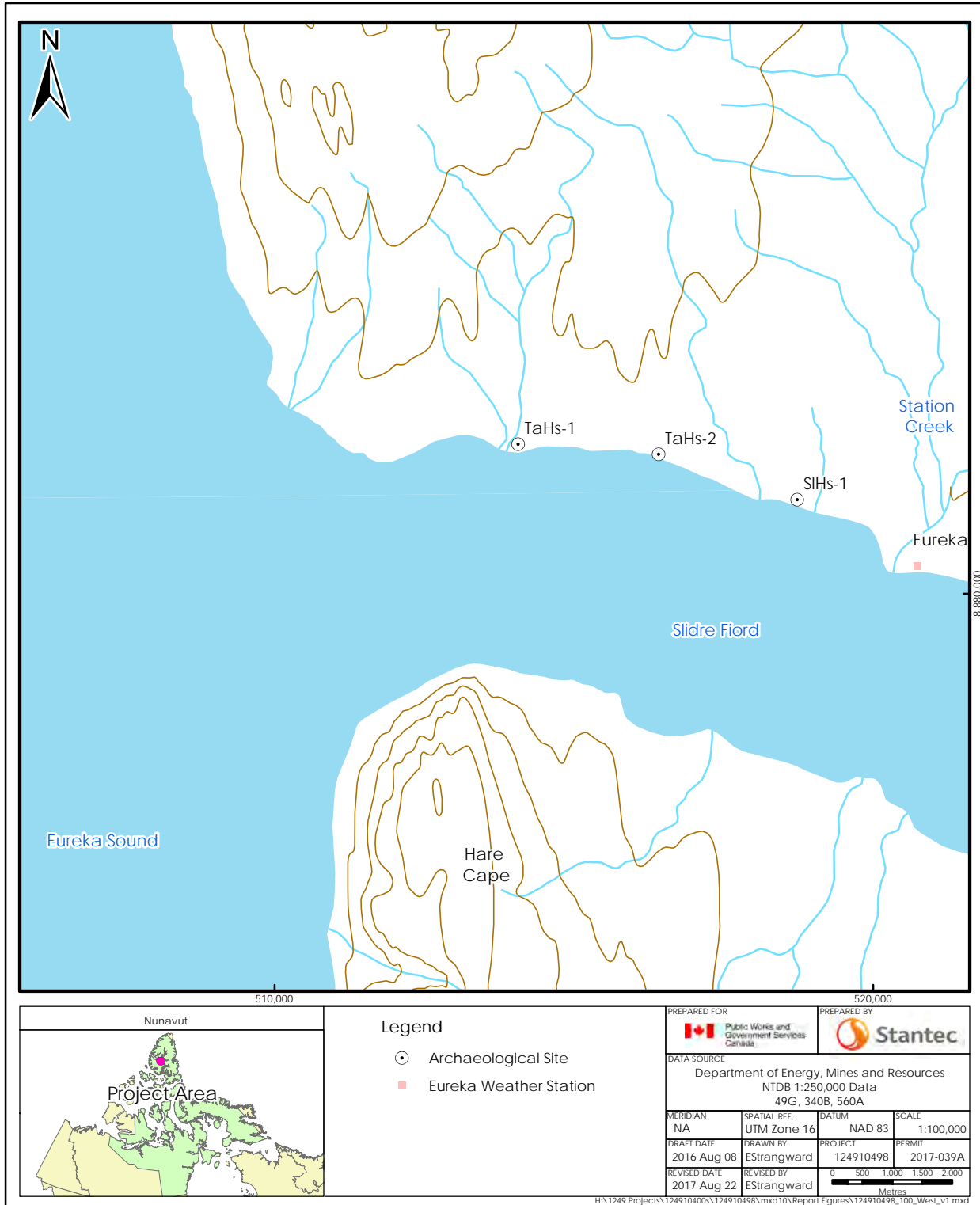
ARCHAEOLOGICAL IMPACT ASSESSMENT
Eureka High Arctic Weather Station Project Improvements – West Remus Creek Borrow
Source/Access Road



Location of Project, **Orthophoto Imagery - Map 3 of 3**

ARCHAEOLOGICAL IMPACT ASSESSMENT

Eureka High Arctic Weather Station Project Improvements – West Remus Creek Borrow Source/Access Road



Legend	
●	Archaeological Site
■	Eureka Weather Station

PREPARED FOR 		PREPARED BY 	
DATA SOURCE Department of Energy, Mines and Resources NTDB 1:250,000 Data 49G, 340B, 560A			
MERIDIAN NA	SPATIAL REF. UTM Zone 16	DATUM NAD 83	SCALE 1:100,000
DRAFT DATE 2016 Aug 08	DRAWN BY EStrangward	PROJECT 124910498	PERMIT 2017-039A
REVISED DATE 2017 Aug 22	REVISED BY EStrangward	0 500 1,000 1,500 2,000 Metres	

H:\1249 Projects\1249104005\124910498\mxd\10\Report Figures\124910498_100_West_v1.mxd

Archaeological Sites Investigated West of Eureka

