

2024 EQE BAY NIRB ANNUAL REPORT

Eqe Bay Exploration Program
2024 Annual Report to the Nunavut
Impact Review Board

ᐃᑦᑭᑦ ᑦᑭᑦᑦᑦ ᐱᑦᑦᑦ
2024 ᐃᑦᑦᑦᑦᑦᑦᑦᑦ ᐃᑦᑦᑦᑦ ᑦᑦᑦᑦ
ᐃᑦᑦᑦᑦᑦᑦᑦᑦ ᑦᑦᑦᑦᑦᑦ

Screening Decision 18EN026

ᑦᑦᑦᑦᑦᑦ ᐃᑦᑦᑦᑦᑦᑦᑦᑦᑦ 18EN026

March 31, 2025 | ᑦᑦᑦ 31, 2025





2024 NIRB ANNUAL REPORT

Popular Summary

EQE BAY PROJECT

Contents

- 1 The Eqe Bay Project
 - 2 2024 Compliance Performance
 - 3 Planning Ahead
-





THE EQE BAY PROJECT

The Ege Bay Project (the Project) is a greenfield exploration initiative owned by Baffinland Iron Mines Corporation (Baffinland), and located on the western shores of Baffin Island, south of the proposed Steensby Port for the Baffinland Mary River Project. The area is currently accessed by helicopter from the Mary River Project mine site, however Baffinland is currently in the scoping phase to build a small exploration camp in the Project area to better explore the exciting mineral potential. There are known iron formations that were identified in the 1960s, as well as more recently discovered mineral prospects that are worth evaluating. This exploration work represents a potential opportunity for additional resource-driven economic development in the North Baffin region.

The Project currently consists of an Exploration Agreement between Baffinland and Nunavut Tunngavik Inc. on Inuit Owned Land parcel IG-03 and mineral claims staked on IG-02 and Crown Land. The project is authorized under a Nunavut Water Board Type 'B' Water License 2BE-EQE1926 and NTI Exploration Agreement IG03-20-001. Access to IG-02 and IG-03, host to Crown mineral claims and the Exploration Agreement respectively, is currently restricted due to difficulties in securing a Land Use Licence II from the Qikiqtani Inuit Association (QIA). Camp development and advanced exploration activities such as drilling are concurrently restricted by difficulties in securing a Land Use Lease from the QIA. A Screening Decision (18EN026) was issued by the Nunavut Impact Review Board (NIRB) for the Ege Bay Project in 2018, and subsequently a Type 'B' Water Licence was issued by the Nunavut Water Board (NWB) in 2019.

As per section 147 of the Nunavut Planning and Project Assessment Act, the Ege Bay Exploration Program Project Proposal commenced with surface sampling and an archeological survey of the area in 2018. Activities in 2019 included geological and structural mapping, grab sampling and ground geophysical surveys. In 2021, a geophysics survey, till sampling, geologic mapping, permafrost, and archaeological survey were completed. Further approved activities and infrastructure (drilling program, camp infrastructure, etc.) will proceed once all required surface approvals are obtained (including a land lease for IOL).

As no infrastructure development or drilling, currently authorized under the Screening Decision, has yet taken place, this report focuses on the limited scope of activities for which conditions were satisfied.

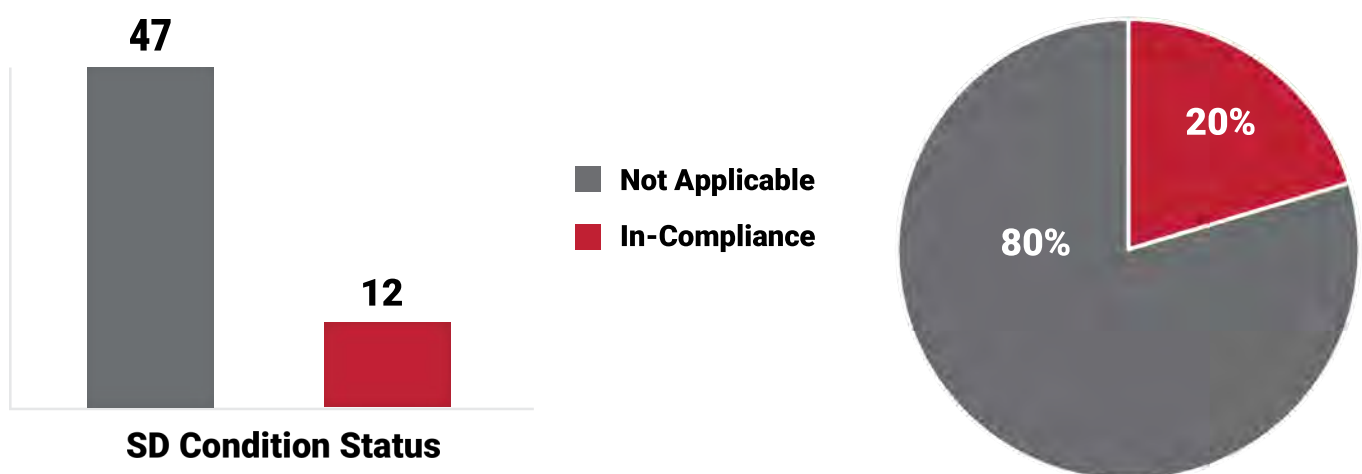
As Baffinland was unable to secure access from the QIA to IG-02 and IG-03, no activities were carried out in the Project area in 2024. No further efforts were made to secure a temporary Land Use License, similar to the one granted in 2021, as it does not support the establishment of a camp or any other investments in the Project that extend beyond a year.

2024 COMPLIANCE PERFORMANCE

The Annual Report (the Report) is a requirement of the Screening Decision, which outlines the terms and conditions for operation of the Project. The Report provides information on how Baffinland is meeting the terms and conditions of the Project Certificate and its performance against them. The Report also presents an opportunity to discuss the yearly Project activities over the preceding calendar year and highlights what is coming ahead for the following year. The complete Report can be found on the NIRB Public Registry at www.nirb.ca as well as on the Baffinland Document Portal at www.baffinland.com.

The following table presents a summary of the performance on the terms and conditions set out in the Project Screening Decision. Due to the cessation of exploration activities in 2024, many of the terms and conditions were not applicable. Overall, Baffinland is in-compliance with the required terms and conditions for the Screening Decision. In areas where improvement is required, Baffinland will continue to make any necessary operational changes and work with regulators and other key stakeholders to make the Project a success.

Summary of Baffinland's 2024 Overall Performance Against Screening Decision 18EN026 Terms and Conditions



Condition Status Definitions	
In-Compliance	Condition requirements have been met
Partially-Compliant	Condition requirements have been partially met. *Demonstrable efforts towards meeting compliance requirements is evidenced.
Non-Compliant	Conditions requirements have not been met. *Rationale for being unable to meet compliance requirements is provided.
Not Applicable	Condition is tied to a project phase or component that was not active during the reporting year, or the responsible party is not the Proponent.



Inuit Geologist Taking a Till Sample in the Ege Bay Area

PLANNING AHEAD

In 2025, Baffinland may continue to conduct its grassroots exploration activities in the Ege Bay area, identifying additional areas of promising mineralization and working to advance our knowledge of the geology. Should Project activities resume, Baffinland will engage with community members to discuss planned developments and employment opportunities that may exist as the project moves forward. Should Project activity resume, Baffinland plans to continue to engage as many local employees as possible and provide on-the-job training to positions relevant to grassroots exploration.

During 2025, Baffinland may look to establish a new exploration camp within the Ege Bay Area to support a drilling program as well as other low impact exploration activities within the Ege Bay Area. The current Screening Decision issued in 2018 inclusive of the scope of these activities. New Land Use Licence and Land Use Lease applications would have to be lodged with and approved by the QIA, that would allow for low-impact exploration work (Land Use Licence) the development of the camp and exploration drilling on Inuit owned land (Land Use Lease). Further consultation is planned to occur in Igloodik and Sanirajak prior to these developments, to keep key stakeholders informed and engaged.



Baffinland Geologist Training Field Technician on Sampling Methods and Observations



QUESTIONS? HERE IS HOW YOU CAN REACH US

Baffinland Head Office

360 Oakville Place Drive
Suite 300
Oakville, Ontario
L6H 6K8

Communications
communications@baffinland.com

Employment & Training
recruitment@baffinland.com
Operation & Proposed Expansion
communityquestions@baffinland.com

Procurement Opportunities
procurement@baffinland.com

Donation Requests
donationrequests@baffinland.com

Northern Head Office and Baffinland Community Liaison Officers:

Iqaluit

Joe Tigullaraq
Head of Northern Affairs
joseph.tigullaraq@baffinland.com

+1 867 975 2502
+1 867 222 6622

Celestino Uyarak
Community Relations Manager
Celestino.uyarak@baffinland.com

+1 867 934 8562

Arctic Bay

Meena Oyukuluk
meena.oyukuluk@baffinland.com

+1 867 439 8847

Clyde River

George Iqalukjuak
george.iqalukjuak@baffinland.com
+1 867 924 6444

Igloolik

Lena Angutiqjuaq
lena.angutiqjuaq@baffinland.com
+1 867 934 8464

Pond Inlet

Erica Koonark
erica.koonark@baffinland.com
+1 867 222 0394

Sanirajak

Ragilee Nangmalik
ragilee.nangmalik@baffinland.com
+1 867 928 8497

Baffinland Iron Mines Corporation

Eqe Bay Project

2024 ANNUAL REPORT TO THE NUNAVUT IMPACT REVIEW BOARD

REV 0





2025-03-31	0		
		J. Hey	L. Kamermans
Date	Rev.	Prepared By	Reviewed and Approved By

TABLE OF CONTENTS

1 INTRODUCTION.....	1
1.1 PROJECT OVERVIEW	1
1.2 REGULATORY CONTEXT	1
2 ENGAGEMENT ACTIVITIES	10
2.1 ENGAGEMENT APPROACH.....	10
2.2 ENGAGEMENT OBJECTIVES.....	11
2.3 ENGAGEMENT ACTIVITIES	11
3 OPERATIONS OVERVIEW	12
3.1 SITE ACTIVITIES COMPLETED IN 2024.....	12
3.2 LOOKING AHEAD.....	12
4 PERFORMANCE ON TERMS AND CONDITIONS	13
4.1 APPROACH TO REPORTING ON PERFORMANCE.....	13
4.2 SUMMARY OF 2024 COMPLIANCE WITH CONDITIONS	14
5 MANAGEMENT PLAN UPDATES	77
6 REFERENCES	78

LIST OF TABLES

Table 1.1:	Permit Registry	8
Table 4.1:	Status of Compliance Terminology and Criteria.....	13
Table 4.2:	Layout of SD Condition Summary Sheets.....	13
Table 5.1:	Current List of Environmental Monitoring and Management Plans	77

LIST OF FIGURES

Figure 1.1:	Eqe Bay Exploration Program.....	2
Figure 1.2:	Eqe Bay Activities Overview	4
Figure 1.3:	Eqe Bay Proposed Camp Location and Beach Landing Area	6
Figure 2.1:	Baffinland’s Approach to Engagement.....	10
Figure 4.1:	Baffinland's Overall Performance against Screening Decision Conditions in 2023	14
Figure 4.2:	Survival Tent Location	67
Figure 4.3:	Survival Tent Placed on Cobbled Paleo-Beach Surface	69

ABBREVIATIONS

Baffinland	Baffinland Iron Mines Corporation
CIRNAC	Crown Indigenous Relations and Northern Affairs Canada
IOL.....	Inuit Owned Land
IQ	Inuit Qaujimaningit
magl	Meters Above Ground Level
NIRB	Nunavut Impact Review Board
NPC	Nunavut Planning Commission
NuPPAA.....	Nunavut Planning and Project Assessment Act
NTI	Nunavut Tunngavik Incorporated
QIA	Qikiqtani Inuit Association
SD.....	Screening Decision
the Project	Ege Bay Exploration Program

1 INTRODUCTION

This 2024 Annual Report (the Report) to the Nunavut Impact Review Board (NIRB) is a requirement of Baffinland Iron Mine Corporation's (Baffinland's) Screening Decision (SD) 18EN026 for the Ege Bay Exploration Program (the Project). This Report summarizes:

- Project activities undertaken during the reporting year (January 1, 2024 - December 31, 2024);
- Baffinland's performance against the requirements of the SD 18EN026; and
- Planned Project-work for the next reporting year (January 1, 2025 - December 31, 2025).

1.1 PROJECT OVERVIEW

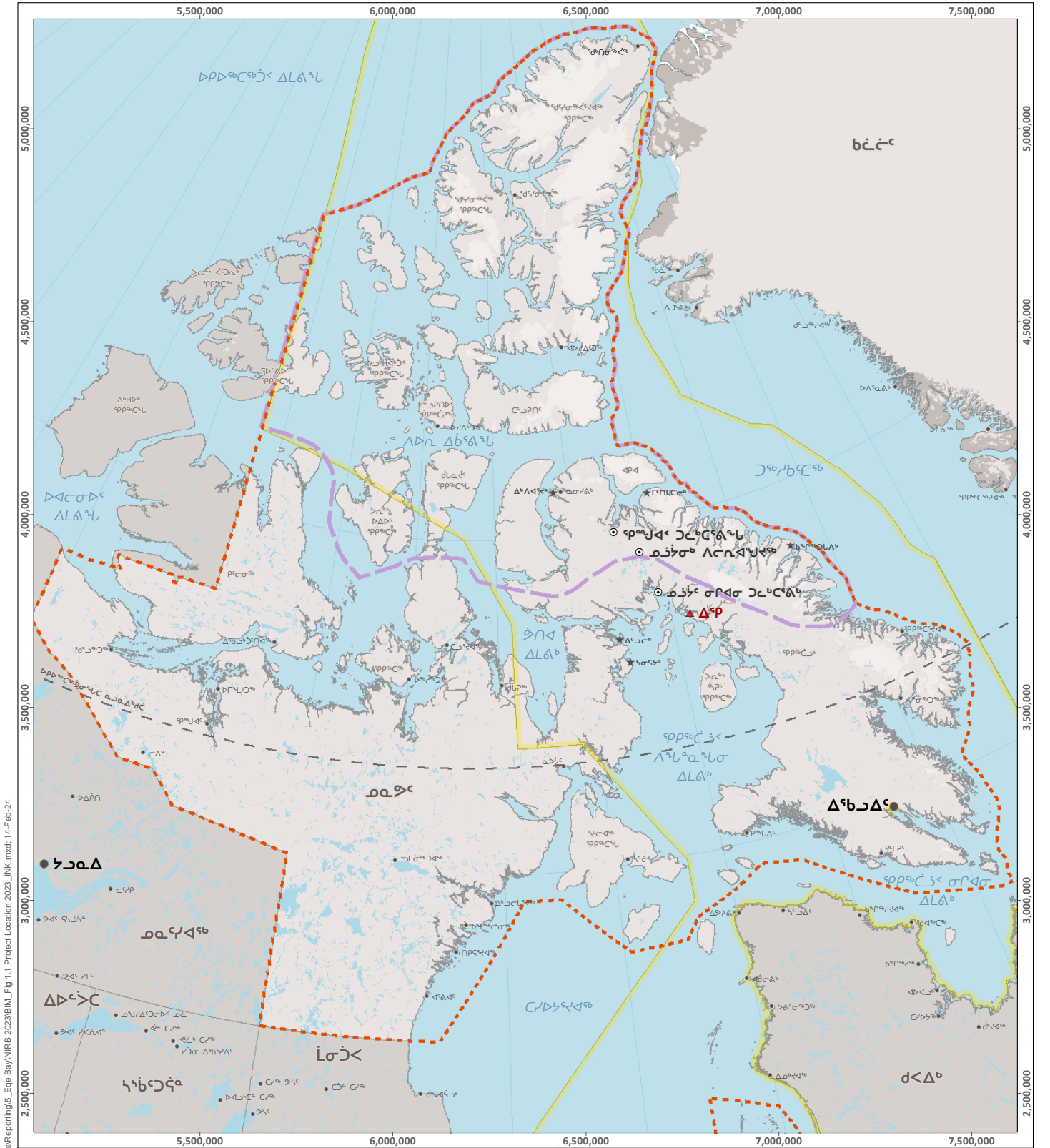
The Ege Bay Exploration Program (the Project, Figure 1.1 and Figure 1.2) is a greenfield exploration program located within the Qikiqtani (North Baffin) region, approximately 90 kilometres (Km) southeast of Steensby Port, and 190 Km northeast from the communities of Sanirajak and Igloolik. There are known iron formations that were identified in the 1960s, as well as more recently discovered mineral prospects that are worth evaluating. This exploration work represents a potential opportunity for resource-driven economic development in the North Baffin region.

There were no Project related activities carried out in 2024 and is further discussed in Section 3. The full scale of the Project, expected to be active until 2026, include the following undertakings, works and activities:

- Use of sealift barges to deliver supplies to the beach near the proposed exploration area (Figure 1.3);
- Set-up and operation of up to a 50-100 person camp to support personnel and accommodate for subsequent expansion of the camp, complete with kitchen/dining, laundry, recreational space, first aid and associated facilities;
- Land-based and on-ice drilling; geological mapping and sampling, backpack drilling, till sampling and geophysical surveys;
- Use of drill equipment to drill several holes to a depth of up to 500 metres;
- Use of helicopters to move drills and to transport workers between the drill and camp site;
- Use of a Twin Otter aircraft to transport workers and deliver supplies to the camp site from either Mary River, Sanirajak or Igloolik;
- Diesel and Jet fuel will be stored in drums within lined secondary containment areas;
- Installation of a portable water treatment plant, grey water sump, an incinerator and power generators; and
- Use of snowmobiles, a skid steer, a backhoe tractor, and equipment and machinery for site personnel use and transportation including construction and site maintenance.

1.2 REGULATORY CONTEXT

On August 17, 2018, the NIRB issued SD 18EN026 for the Project to Baffinland (NIRB, 2018) pursuant to Article 12 of the Nunavut Agreement, and Section 87 of the Nunavut Planning and Project Assessment Act (NuPPAA). The basis for the SD is Baffinland's proposed scope, which gives an overview of the early phases of the Project and a potential 5-year outlook.



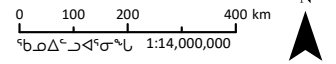
SAVED: C:\Users\katie.mcguire\Documents\4 - Maps\Reporting\5 - Eqe Bay\NFB 2023\BIM_Fig 1.1 Project Location 2023_INK.mxd; 14-Feb-24

- ᓄᓇᓂᓄᓐ ᐅᓂᓂᓐᓴᓐ**
- ⊙ ᐱᓕᓕᓐᓴᓐ ᐃᓕᓐᓴᓐ ᐃᓕᓐᓴᓐ ᐃᓕᓐᓴᓐ
 - ▲ ᐃᓴᓐ ᐅᓂᓂᓐᓴᓐ ᓴᓐᓴᓐ ᓴᓐᓴᓐ
 - ᓴᓐᓴᓐ ᓴᓐᓴᓐ ᓴᓐᓴᓐ ᓴᓐᓴᓐ ᓴᓐᓴᓐ
 - ⋯ ᓄᓇᓂᓄᓐ ᓄᓇᓂᓄᓐ ᓴᓐᓴᓐ
 - ᓴᓐᓴᓐ ᓴᓐᓴᓐ

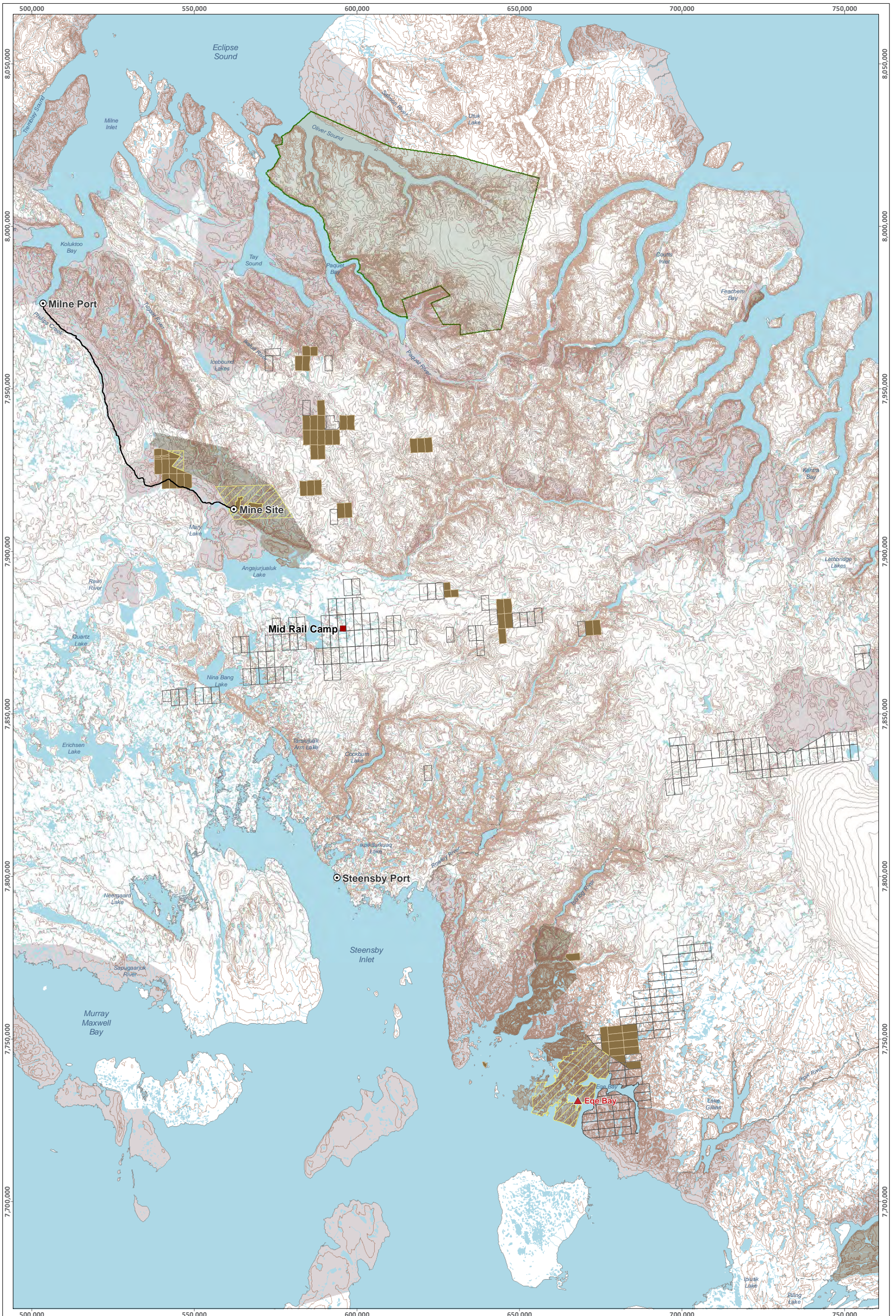
ᐃᓴᓐ ᐅᓂᓂᓐᓴᓐ ᓴᓐᓴᓐ ᓴᓐᓴᓐ EQE BAY EXPLORATION

ᐅᓂᓂᓐᓴᓐ ᓴᓐᓴᓐ ᓴᓐᓴᓐ ᓴᓐᓴᓐ

Projection: NAD 1983 STATISTICS CANADA LAMBERT.
Base Map: © King's Printer for Ontario, 2024.



ᓴᓐᓴᓐ ᓴᓐᓴᓐ
FIGURE 1.1



Saved: C:\Users\katie.mcquinn\Documents\4 - Maps\Reporting\S_Ege Bay\NIRB 2023\BIM_Fig 1.2 Project Activities 2023.mxd; 14-Feb-24

LEGEND		
▲ Exploration Program Location	 Sirmilik National Park	 Mineral Claims Held by Baffinland
 Project Facility Location	 IOL Surface Only	 NTI Exploration Area
■ Mid Rail Camp Location	 IOL Surface and Subsurface	 Mining Lease Boundary
 Milne Inlet Tote Road	 Mining Lease Boundary	 Contour (20 m Interval)
 Contour (20 m Interval)	 Crown Land	

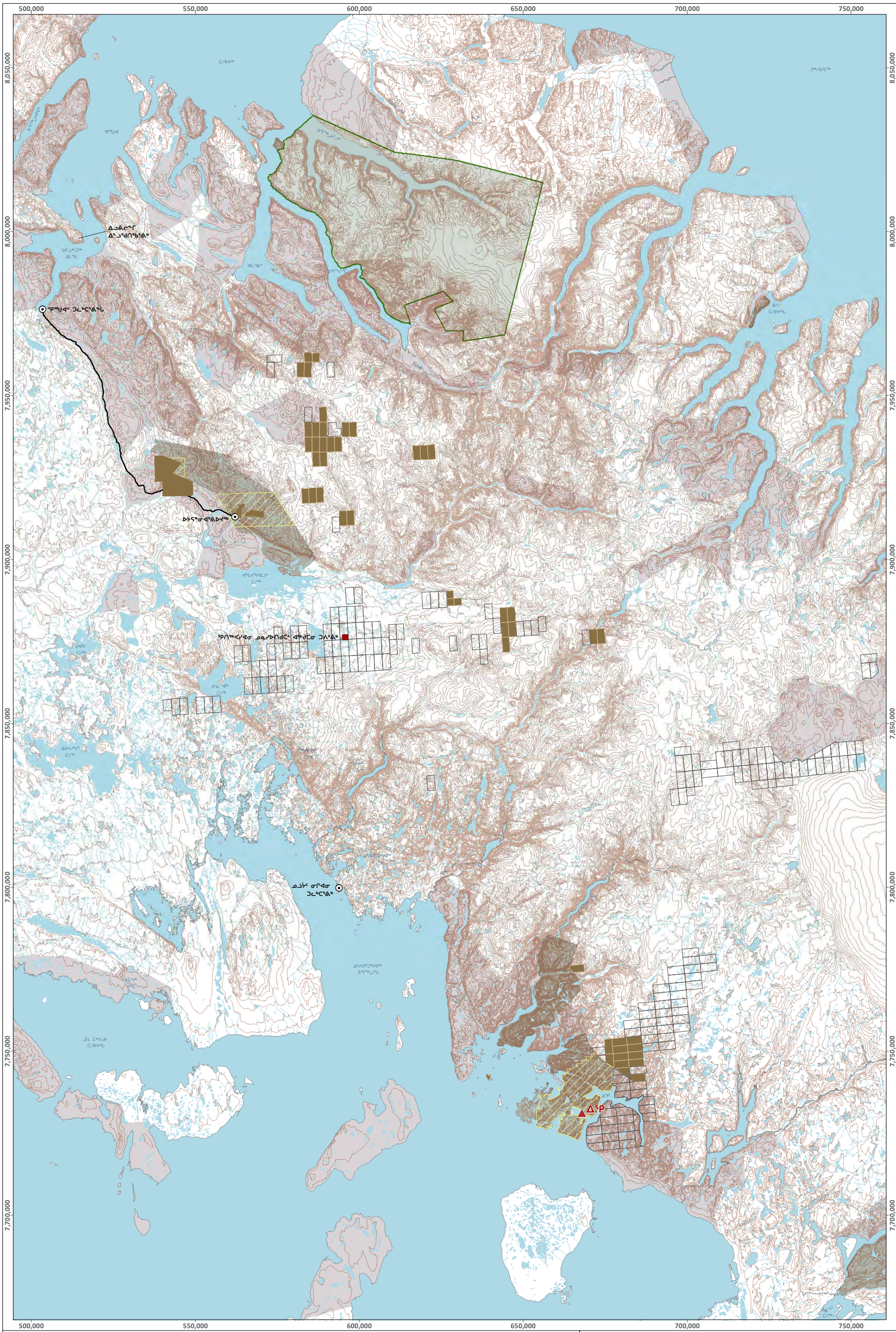
ᐃᑦᑦ ᐅᑦᑦᑦᑦᑦᑦᑦᑦ ᑦᑦᑦᑦᑦᑦᑦᑦ EQE BAY EXPLORATION

Ege Bay Activities Overview

Projection: NAD 1983 UTM ZONE 17N.
Base Map: © King's Printer for Ontario, 2024.

0 5 10 20 30 km
Scale 1:1,100,000

ᑦᑦᑦᑦᑦᑦᑦᑦᑦᑦ
FIGURE 1.2



SAVED: C:\Users\katie.mcquillan\Documents\4 - Mapal\Reporting\S_Ege Bay\NIRB 2023\BIM_Fig 1.2 Project Activities 2023_INK.mxd, 14-Feb-24

ᓄᓇ ᓂᓄᓄᓄ ᓄᓄᓄᓄᓄ			
▲	ᓄᓄᓄᓄᓄᓄᓄᓄᓄᓄ ᓄᓄᓄᓄᓄᓄᓄᓄᓄᓄ	■	ᓄᓄᓄᓄᓄᓄᓄᓄᓄᓄᓄᓄ ᓄᓄᓄᓄᓄᓄᓄᓄᓄᓄᓄᓄ
○	ᓄᓄᓄᓄᓄᓄᓄᓄᓄᓄᓄᓄ ᓄᓄᓄᓄᓄᓄᓄᓄᓄᓄᓄᓄ	■	ᓄᓄᓄᓄᓄᓄᓄᓄᓄᓄᓄᓄᓄ ᓄᓄᓄᓄᓄᓄᓄᓄᓄᓄᓄᓄ
■	ᓄᓄᓄᓄᓄᓄᓄᓄᓄᓄᓄᓄᓄ ᓄᓄᓄᓄᓄᓄᓄᓄᓄᓄᓄᓄᓄ	■	ᓄᓄᓄᓄᓄᓄᓄᓄᓄᓄᓄᓄᓄ ᓄᓄᓄᓄᓄᓄᓄᓄᓄᓄᓄᓄᓄ
—	ᓄᓄᓄᓄ ᓄᓄᓄᓄᓄᓄᓄᓄᓄᓄᓄᓄ ᓄᓄᓄᓄᓄᓄᓄᓄᓄᓄᓄᓄ	■	ᓄᓄᓄᓄᓄᓄᓄᓄᓄᓄᓄᓄᓄ ᓄᓄᓄᓄᓄᓄᓄᓄᓄᓄᓄᓄᓄᓄᓄᓄᓄᓄᓄᓄᓄᓄᓄᓄ
—	ᓄᓄᓄᓄ ᓄᓄᓄᓄᓄᓄᓄᓄᓄᓄᓄᓄᓄᓄ (20ᓄᓄᓄ ᓄᓄᓄᓄᓄᓄᓄᓄᓄᓄᓄᓄ)	■	ᓄᓄᓄᓄᓄᓄᓄᓄᓄᓄᓄᓄᓄᓄ

ᓄᓄᓄᓄ ᓄᓄᓄᓄᓄᓄᓄᓄᓄᓄᓄᓄ ᓄᓄᓄᓄᓄᓄᓄᓄᓄᓄᓄᓄ EQE BAY EXPLORATION

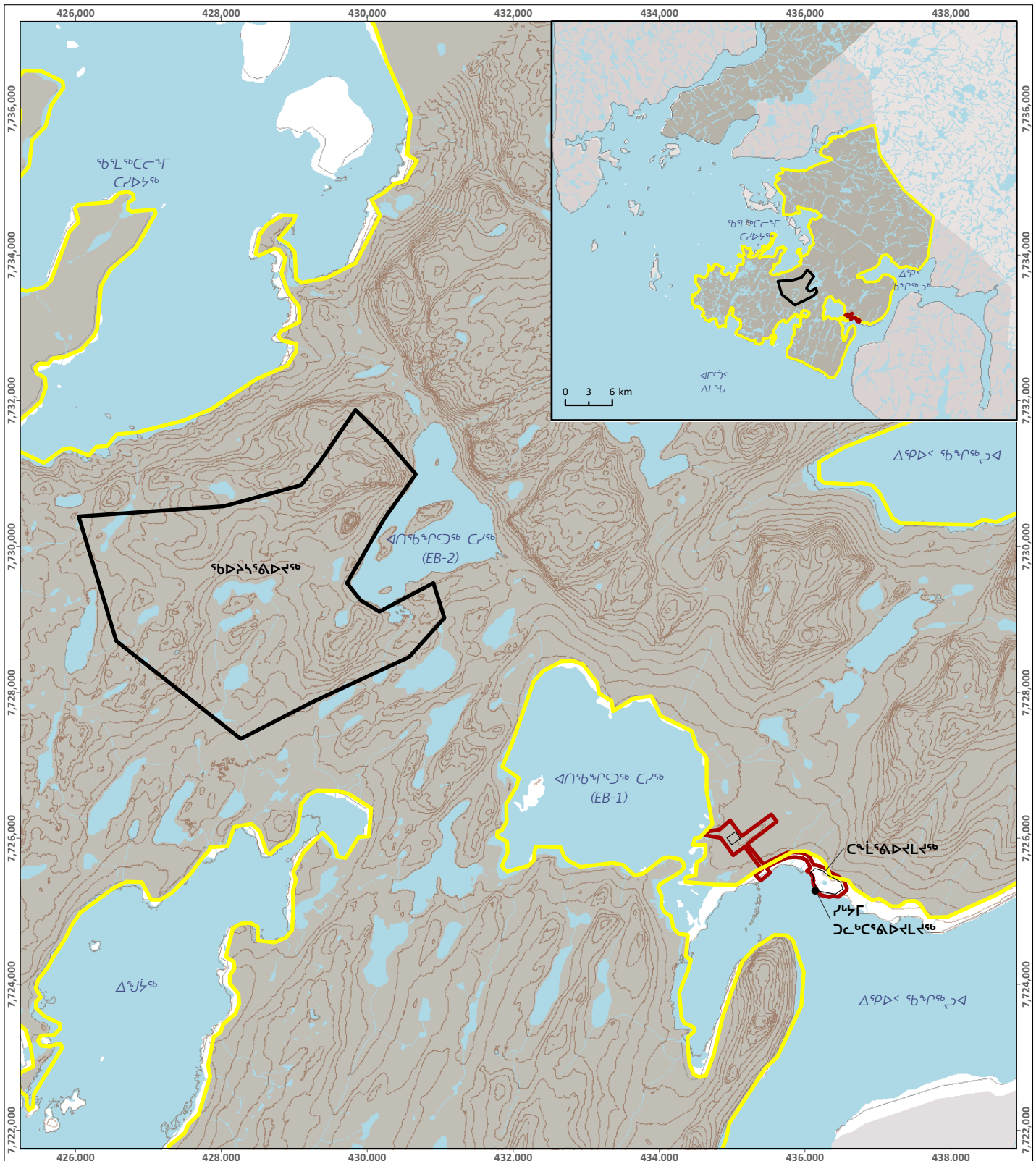
ᓄᓄᓄᓄ ᓄᓄᓄᓄᓄᓄᓄᓄᓄᓄᓄᓄ ᓄᓄᓄᓄᓄᓄᓄᓄᓄᓄᓄᓄᓄᓄ

Projection: NAD 1983 UTM ZONE 17N.
Base Map: © King's Printer for Ontario, 2024.

0 5 10 20 30 km
ᓄᓄᓄᓄᓄᓄᓄᓄᓄᓄᓄᓄᓄ 1:1,100,000

Baffinland

ᓄᓄᓄᓄᓄᓄᓄᓄᓄᓄᓄᓄᓄ
FIGURE 1.2



ᓄᓇᓂᓄᓐ ᐅᓂᓂᓐᓂᓐ

- ᓂᓄᓂᓐ ᐅᓂᓂᓐᓂᓐ
- ᓄᓇᓂᓄᓐ ᓂᓄᓂᓐᓂᓐ (10ᓐᓂᓐ ᐅᓂᓂᓐᓂᓐ)
- ᓂᓄᓂᓐᓂᓐ
- ᐅᓂᓂᓐᓂᓐ
- ᐅᓂᓂᓐᓂᓐ ᓄᓇ
- ᐅᓂᓂᓐ ᓄᓇᓂᓄᓐᓂᓐ ᓂᓄᓂᓐ
- ᐅᓂᓂᓐ ᓄᓇᓂᓄᓐᓂᓐ ᓂᓄᓂᓐ ᐅᓂᓂᓐ

EQE BAY EXPLORATION

ᐅᓂᓂᓐ ᓂᓄᓂᓐᓂᓐ ᐅᓂᓂᓐᓂᓐ

ᐅᓂᓂᓐᓂᓐ

Projection: NAD 1983 UTM ZONE 18N.
Base Map: © King's Printer for Ontario, 2024.

0 0.5 1 2 km
Scale: 1:75,000

N

Baffinland

ᐅᓂᓂᓐᓂᓐ ᓂᓄᓂᓐᓂᓐ
FIGURE 1.3

As per section 147 of the Nunavut Planning and Project Assessment Act, the Ege Bay Exploration Program Project Proposal commenced with surface sampling and an archeological survey of the area in 2018. Activities in 2019 included geological and structural mapping, grab sampling and ground geophysical surveys. In 2021, a geophysics survey, till sampling, geologic mapping, permafrost, and archaeological survey were completed. Further approved activities and infrastructure (drilling program, camp infrastructure, etc.) will proceed once all required surface approvals are obtained (including a land lease for Inuit Owned Land [IOL]).

Development of the approved Project includes:

- The construction, operation, closure and post-closure activities associated with the camp and its related infrastructure;
- The operation of up to nine (9) diamond drills for exploration purposes;
- The development of two (2) quarries for aggregate; and
- The execution of low-impact exploration and environmental ground-work.

Baffinland currently operates the exploration program in accordance with the permits, licences, approvals, authorizations and agreements identified in Table 1.1. Additional authorizations will be required to implement the full scope of the Project, including authorizations from the Department of Fisheries and Oceans Canada, however these have not been sought at this early stage of the exploration program. New Land Use Licence and Land Use Lease applications would have to be lodged with and approved by the Qikiqtani Inuit Association (QIA), that would allow for low-impact exploration work (Land Use Licence) the development of the camp and exploration drilling on Inuit owned land (Land Use Lease).

Table 1.1: Permit Registry

Approval	Project Activity	Expiry
Nunavut Impact Review Board Nunavut Agreement, and the Nunavut Planning and Project Assessment Act as of July 9, 2015		
Screening Decision 18EN026	Required to obtain the requisite permits and approvals to proceed with Project	No Expiry
Qikiqtani Inuit Association Agreements issued under Articles 6, 20 and 26 of the Nunavut Agreement		
Inuit Impact and Benefit Agreement (IIBA)	Compliance with the agreement is outlined in the Annual IIBA Implementation Report submitted by March 31 st of each year.	N/A
Department of Fisheries and Oceans Canada Letters of Advice		
Letter of Advice – 21-HCAA-00685	Rock/Boulder Removal, Ege Bay, Foxe Basin, Qikiqtani Region	N/A
Nunavut Water Board Water Licences issued under the Nunavut Agreement (Article 13), the Nunavut Waters and Nunavut Surface Rights Tribunal Act, and the Northwest Territories Water Regulations		
Type B Water licence 2BE-EQE1926	Regional exploration activities, including exploration drilling	April 3, 2026
Indigenous and Northern Affairs Canada Mineral Claims on Crown Land, issued under the Territorial Lands Act and associated Canadian Mining Regulations and Territorial Land Use Regulations		
Mining Recorders Office	Prospecting, geologic mapping, geophysical surveying, etc. on crown land and IG-02	Various

Approval	Project Activity	Expiry
Nunavut Tunngavik Incorporated (NTI) <i>Exploration Agreements</i>		
NTI Exploration Agreement IG03-20-001	Joint-venture agreement between NTI and Baffinland for IG-03	May 1, 2028

2 ENGAGEMENT ACTIVITIES

2.1 ENGAGEMENT APPROACH

Meaningful stakeholder, community, and Inuit engagement is valued by Baffinland as a means of building and maintaining community relationships and maximizing benefits from the Project. Baffinland’s approach to engagement emphasizes the importance of informing Inuit, affected communities, and other stakeholders, as well as establishing effective dialogue, and collecting feedback and resolving issues and concerns (Figure 2.1).



Figure 2.1: Baffinland’s Approach to Engagement

Baffinland had to make changes to its engagement approach in 2021 due to the global COVID-19 pandemic. Travel restrictions and increased focus on community and employee health and safety moved many engagements from in-person to online (teleconference/videoconference) formats. While these types of engagements are not ideal from an Inuit cultural or relationship building perspective, they have proven successful in ensuring that stakeholders and community representatives have been able to continue dialogue with Baffinland throughout the Pandemic. Public engagement has been most affected by the COVID-19 restrictions. In response, Baffinland increased use of social media and local radio as a means to ensure that information about the Company and its activities have been shared with wider audiences. As travel restrictions and public health orders are continually evolving, Baffinland continually evaluates what methods of engagement will inform an effective approach while ensuring that individual and community health and safety remains the foremost priority. This continual evaluation and adaptive approach to engagement is predicted to continue until the COVID-19 pandemic and related public health orders and advice allow for in person engagements to once again be the most used engagement technique.

2.2 ENGAGEMENT OBJECTIVES

Baffinland is committed to meaningful engagement with stakeholders potentially affected by the Project, including the five (5) North Baffin Communities (Arctic Bay, Clyde River, Sanirajak, Igloolik and Pond Inlet), the QIA, applicable regulatory agencies and the general public.

The objectives of Baffinland's engagement efforts are to:

- Provide Inuit, communities and other stakeholders with relevant Project information in a timely, accessible and culturally appropriate manner in order to identify issues and concerns and provide input into the development of appropriate mitigation measures and issues resolution;
- Ensure that Inuit, communities and other stakeholders have the opportunity to understand and meaningfully engage in the processes initiated by the Project;
- Consider Inuit traditional knowledge as well as scientific expertise and community feedback in decision-making processes;
- Build constructive and positive relationships with communities most likely to be affected by the Project; and
- Focus priorities so that potential adverse effects are mitigated, and Project benefits are enhanced.

2.3 ENGAGEMENT ACTIVITIES

Due to the lack of Project activities in 2024, no engagement activities were carried out in relation to the Ege Bay Project.

3 OPERATIONS OVERVIEW

3.1 SITE ACTIVITIES COMPLETED IN 2024

During 2024, there were no activities carried out under the scope of the Screening Decision as a Land Use Licence necessary to access the Ege Bay Mineral Exploration Agreement area was not approved by the Qikiqtani Inuit Association (QIA).

A survival shack was established in 2019 near the work area (UTM NAD83 18W 430790E, 7729380N), and left in place over the winter for use again in future seasons.

3.2 LOOKING AHEAD

Due to limited work being done in 2021 and none in 2024, nearly the entirety of the 2021 & 2022 Work Plan have been rescheduled for 2025.

A summary of the planned 2024 activities (subject to change) are as follows:

1. Use of sealift barges to deliver supplies to the beach near the proposed exploration area.
2. Set-up and operation of a 25-30 person soft-wall camp to support personnel and accommodate for subsequent expansion of the camp complete with kitchen/dinning, laundry, recreational space, first aid and associated facilities.
3. Bathymetric surveys of Lakes EB-1 and EB-2, and if time and manpower permits, other nearby water bodies.
4. Use of drill equipment to drill several holes to a depth of up to 500 metres.
5. Use of helicopters to move drills and to transport workers between the drill and camp site.
6. Use of a Twin Otter aircraft to transport workers and deliver supplies to the camp site from either Mary River, Sanirajak or Igloolik.
7. Diesel and Jet fuel will be stored in drums within lined secondary containment.
8. Installation of a portable water treatment plant, an incinerator and power generators.
9. Use of snowmobiles, a skid steer, an excavator and bulldozer for site personnel use and transportation including construction and site maintenance.
10. Environmental monitoring in accordance with the approved Screening Decision, licenses, authorizations, management plans and environmental effects monitoring plans.
11. On-going exploration activities including land-based drilling; geological mapping and sampling, backpack drilling, till/soil sampling and geophysical surveys. Planning of the details of the summer drilling and/or trenching program is not yet finalized.

4 PERFORMANCE ON TERMS AND CONDITIONS

The following sections provide a discussion of Baffinland’s self-assessed status of compliance and performance related to each of Terms and Conditions in SD 18EN026 for the Project in 2024.

Each SD condition is assigned a status of compliance (Table 4.1). Where a SD condition is designated as being only ‘Partially-Compliant’ or ‘Non-Compliant’, a rationale explaining why ‘In Compliance’ was not achieved in 2024 and, where applicable, a strategy for moving towards full compliance for the 2025 reporting year has been provided.

Table 4.1: Status of Compliance Terminology and Criteria

Status of Compliance	Criteria
In Compliance	Condition requirements have been met.
Partially-Compliant	Condition requirements have been partially met. <i>*Demonstrable efforts towards meeting compliance requirements is evidenced.</i>
Non-Compliant	Conditions requirements have not been met. <i>*Rationale for being unable to meet compliance requirements is provided.</i>
Not Applicable	Condition is tied to a project phase or component that was not active during the 2019 reporting year, or the responsible party is not the Proponent.

Baffinland has taken a conservative approach to self-assessing the status of compliance with SD Conditions for 2024. When determining a status of compliance for each of the SD conditions, the following process was implemented by Baffinland and its technical experts:

1. A review of the specific requirements outlined in each SD condition is conducted.
2. A review of all relevant work completed by Baffinland in the reporting year and/or previous reporting years (if applicable) relevant to the SD condition is conducted.
3. A gap analysis is completed to assess whether or not there is a delta between the requirements of the SD condition and the work completed by Baffinland to meet these requirements.
4. Stakeholder comments relevant to the SD condition are considered.
5. A status of compliance based on the results of the analysis is assigned.

4.1 APPROACH TO REPORTING ON PERFORMANCE

An individual summary sheet for each of the terms and conditions has been provided in Section 4.2. The category and content of information provided in these summary sheets is outlined in Table 4.2.

Table 4.2: Layout of SD Condition Summary Sheets

Item	Summary of Content
Category	Category as defined in SD 18EN026
Term or Condition	The term or condition as written in SD 18EN026
Status of Compliance	A self-assessed status of compliance for the SD Condition In Compliance Partially-Compliant Non Compliant Not Applicable

Item	Summary of Content
Reference	Description / title of relevant documents where supporting information related to SD condition status of compliance is available for review. Hyperlink to web-portal where referenced documentation can be accessed.
Methods	The methods employed to complete work required to meet compliance to the SD condition. Summary of any adaptive management measures employed that year in support of achieving compliance to the SD condition.
Results	Summary of efforts or work that were completed in support of achieving SD condition compliance in 2024, and previous reporting years, where applicable.
Trends	Summary of notable trends from previous years.
Recommendations /Lessons Learned	Summary of any operational changes undertaken or recommended for the future to achieve compliance or to further enhance environmental performance. Assessment of effectiveness of monitoring program and whether any changes to the scope of monitoring are appropriate. Identification of any challenges related to implementing mitigation measures, undertaking monitoring, or obtaining data from other sources.

4.2 SUMMARY OF 2024 COMPLIANCE WITH CONDITIONS

Baffinland’s performance in fulfilling the SD conditions in 2024 is presented on Figure 4.1. A summary of each of the conditions and the Project status with respect to the conditions in 2024 is presented in detail following this summary.

Baffinland is In Compliance the required terms and conditions for the Project. Of the fifty-nine (59) conditions in the SD, Baffinland was in compliance with the twelve (12) conditions that were applicable to the current development status. The remainder were not applicable, and there were no Non Compliant status designations in 2024. Baffinland will continue to make operational changes and work with regulators and the communities to ensure the Project remains in compliance with SD 18EN026.

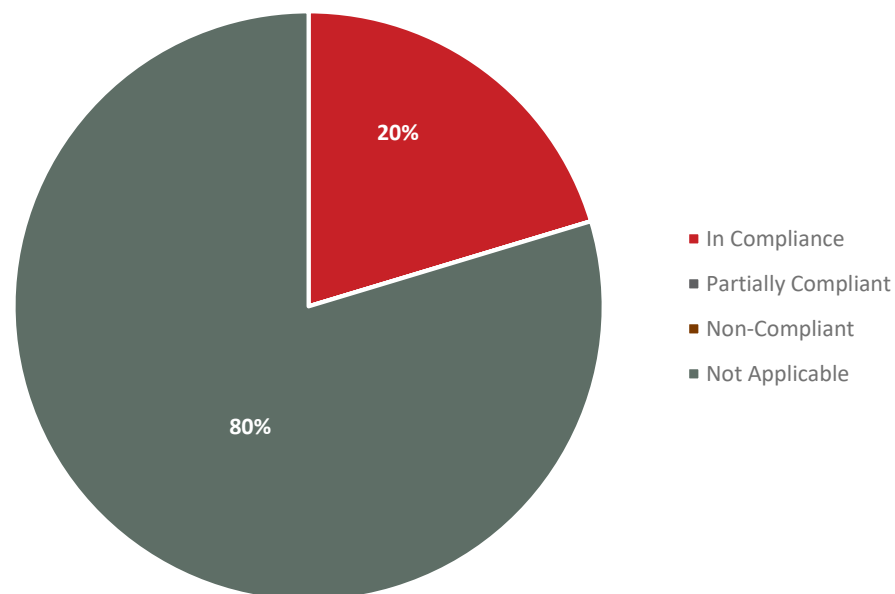


Figure 4.1: Baffinland's Overall Performance against Screening Decision Conditions in 2024

Screening Decision Condition No. 1

Category	General
Term or Condition	The Proponent shall maintain a copy of the Project Terms and Conditions at the site of operations at all times.
Status	In Compliance
Reference	N/A
Ref. Document Link	N/A

METHODS

Baffinland keeps a record of the Project Terms and Conditions located in the Exploration Office at Mary River, as there are currently no facilities in the Project Area at Ege Bay for posting the Project Terms & Conditions. This is effective as access to the Project Area is currently by helicopter only, which is organized and accessed through the Exploration department.

RESULTS

All team members are aware of the Terms and Conditions before embarking on the helicopter for access to the Ege Bay Project Area. This ensures that all persons accessing the Project Area are aware of the Terms & Conditions of the SD.

TRENDS

Not applicable.

RECOMMENDATIONS / LESSONS LEARNED

As infrastructure is developed at the Ege Bay Project, Baffinland will develop a site specific orientation for Baffinland staff, contractors and visitors that provides an overview of all Terms and Conditions. A suitable location at the future infrastructure development at the Project Area will be chosen for posting of the Terms and Conditions of the SD.

Screening Decision Condition No. 2

Category	General
Term or Condition	The Proponent shall forward copies of all permits obtained and required for this project to the Nunavut Impact Review Board (NIRB) prior to the commencement of the project.
Status	In Compliance
Reference	N/A
Ref. Document Link	N/A

METHODS

Baffinland has informed the NIRB of all relevant permits obtained in relation to the Ege Bay Project. Any new permits shall continue to be forwarded to the NIRB prior to commencement of the project or as they are obtained.

RESULTS

The NIRB and all stakeholders are aware of all the permits held by Baffinland that relate to the Project and what terms and conditions govern the operation of the Project.

TRENDS

Not applicable.

RECOMMENDATIONS / LESSONS LEARNED

Baffinland will continue to comply with this condition as the project moves forward.

Screening Decision Condition No. 3

Category	General
Term or Condition	The Proponent shall operate in accordance with all commitments stated in correspondence provided to the Nunavut Planning Commission (NPC File No.: 148801), and the NIRB (Online Application Form, April 27, 2018; Ege Bay Exploration Program Project Proposal, April 27, 2018; Draft Ege Bay Environmental Protection Plan, Draft Inspection and Monitoring Plan, Draft Spill Contingency Plan, July 4, 2018; and Access Road Culvert Design, July 7, 2018).
Status	In Compliance
Reference	N/A
Ref. Document Link	N/A

METHODS

Baffinland continues to operate in accordance with all commitments made in correspondence made to the Nunavut Planning Commission (NPC) the NIRB, the QIA, Crown Indigenous Relations and Northern Affairs Canada (CIRNAC) and the Nunavut Water Board.

RESULTS

Baffinland conducts work on the Ege Bay project following industry best practices to reduce environmental impact to lowest extent practicable while achieving positive and constructive relationships with community stakeholders.

TRENDS

Not applicable.

RECOMMENDATIONS / LESSONS LEARNED

As infrastructure is developed and advanced exploration begins at the Ege Bay Project, Baffinland will continue to operate in accordance with all commitments made and agreed upon by various stakeholder groups. Every effort will continue to be made to abide by best practices and to operate in a socially and environmentally responsible manner. Management and monitoring plans will continue to be updated throughout the life of the project to reflect changes in scope, stakeholder feedback and adaptive management.

Screening Decision Condition No. 4

Category	General
Term or Condition	The Proponent shall operate the site in accordance with all applicable Acts, Regulations, and Guidelines.
Status	In Compliance
Reference	N/A
Ref. Document Link	N/A

METHODS

Baffinland, through policies and procedures designed to insure adherence, operates in accordance with all applicable Acts, Regulations and Guidelines as they relate to the Ege Bay Project.

RESULTS

Every member of the Project team adheres to all applicable Acts, Regulations and Guidelines. During work planning, if activities are found to be in contravention of any of the Acts, Regulations or Guidelines, amendments are made to plans, policies and procedures to ensure compliance before any activities are started.

TRENDS

Not applicable.

RECOMMENDATIONS / LESSONS LEARNED

Baffinland will continue to operate in accordance with all applicable Acts, Regulations and Guidelines. Baffinland will stay current to any changes to the aforementioned and enact changes to policies, procedures and plans as necessary to ensure compliance.

Screening Decision Condition No. 5

Category	Water Use
Term or Condition	The Proponent shall not extract water from any fish-bearing waterbody unless the water intake hose is equipped with a screen of appropriate mesh size to ensure that there is no entrapment of fish. Small lakes or streams should not be used for water withdrawal unless otherwise authorized by the Nunavut Water Board.
Status	Not Applicable
Reference	N/A
Ref. Document Link	N/A

METHODS

No water was withdrawn from any water body in 2024 for the Project.

RESULTS

Not applicable.

TRENDS

Not applicable.

RECOMMENDATIONS / LESSONS LEARNED

Baffinland will implement the SD Condition when it becomes applicable.

Screening Decision Condition No. 6

Category	Water Use
Term or Condition	The Proponent shall not use water, including constructing or disturbing any stream, lakebed or the banks of any definable water course unless otherwise authorized by the Nunavut Water Board.
Status	Not Applicable
Reference	N/A
Ref. Document Link	N/A

METHODS

No water was withdrawn from any waterbody in 2024 for the Project.

RESULTS

Not applicable.

TRENDS

Not applicable.

RECOMMENDATIONS / LESSONS LEARNED

Baffinland will implement the SD Condition when it becomes applicable.

Screening Decision Condition No. 7

Category	Waste Disposal/Incineration
Term or Condition	The Proponent shall keep all garbage and debris in bags placed in a covered metal container or equivalent until disposed of at an approved facility. All such wastes shall be kept inaccessible to wildlife at all times.
Status	Not Applicable
Reference	BAF-PH1-400-P16-0001 Ege Bay Environmental Protection Plan BAF-PH1-400-P16-0005 Ege Bay Waste Management Plan
Ref. Document Link	N/A

METHODS

No camp infrastructure was operated at the Project in 2024 and there was no presence on-site by any Project personnel.

RESULTS

No waste was left in the field and no animal interactions with waste occurred.

TRENDS

Not applicable.

RECOMMENDATIONS / LESSONS LEARNED

As infrastructure is developed at the Ege Bay Project, Baffinland will implement site-specific waste storage and disposal procedures to ensure no waste is accessible to wildlife.

Screening Decision Condition No. 8

Category	Waste Disposal/Incineration
Term or Condition	The Proponent shall incinerate all combustible wastes daily and remove the ash from incineration activities and non-combustible wastes from the project site to an approved facility for disposal.
Status	Not Applicable
Reference	N/A
Ref. Document Link	N/A

METHODS

No camp infrastructure operation or incineration was completed in 2024 for the Project.

RESULTS

Not applicable.

TRENDS

Not applicable.

RECOMMENDATIONS / LESSONS LEARNED

Baffinland will implement the SD Condition when it becomes applicable.

Screening Decision Condition No. 9

Category	Waste Disposal/Incineration
Term or Condition	The Proponent shall ensure that the incineration of combustible camp wastes comply with the Canadian Wide Standards for Dioxins and Furans, and the Canadian Wide Standards for Mercury.
Status	Not Applicable
Reference	N/A
Ref. Document Link	N/A

METHODS

No camp infrastructure operation or incineration was completed in 2024 for the Project.

RESULTS

Not applicable.

TRENDS

Not applicable.

RECOMMENDATIONS / LESSONS LEARNED

Baffinland will implement the SD Condition when it becomes applicable.

Screening Decision Condition No. 10

Category	Waste Disposal/Incineration
Term or Condition	The Proponent shall ensure that no waste oil/grease is incinerated on site.
Status	Not Applicable
Reference	N/A
Ref. Document Link	N/A

METHODS

No camp infrastructure operation or incineration was completed in 2024 for the Project.

RESULTS

Not applicable.

TRENDS

Not applicable.

RECOMMENDATIONS / LESSONS LEARNED

Baffinland will implement the SD Condition when it becomes applicable.

Screening Decision Condition No. 11

Category	Fuel and Chemical Storage
Term or Condition	The Proponent shall store all fuel and chemicals in such a manner that they are inaccessible to wildlife.
Status	Not Applicable
Reference	BAF-PH1-400-P16-0001 Ege Bay Environmental Protection Plan
Ref. Document Link	N/A

METHODS

No fuel was stored at the Project area in 2024.

RESULTS

Not applicable.

TRENDS

Not applicable.

RECOMMENDATIONS / LESSONS LEARNED

As infrastructure is developed at the Ege Bay Project, Baffinland will implement site specific fuel and chemical storage procedures and continue to ensure they are inaccessible to wildlife.

Screening Decision Condition No. 12

Category	Fuel and Chemical Storage
Term or Condition	The Proponent shall locate all fuel and other hazardous materials a minimum of thirty-one (31) metres away from the high water mark of any water body and in such a manner as to prevent their release into the environment unless otherwise authorized by the Nunavut Water Board.
Status	Not Applicable
Reference	BAF-PH1-400-P16-0001 Ege Bay Environmental Protection Plan
Ref. Document Link	N/A

METHODS

No fuel was stored at the Project area in 2024.

RESULTS

Not applicable.

TRENDS

Not applicable.

RECOMMENDATIONS / LESSONS LEARNED

As infrastructure is developed at the Ege Bay Project, Baffinland will ensure all fuel and chemical storage sites are a minimum of thirty-one (31) metres away from the high water mark of any water body and in such a manner as to prevent their release into the environment.

Screening Decision Condition No. 13

Category	Fuel and Chemical Storage
Term or Condition	The Proponent shall ensure that re-fueling of all equipment occurs a minimum of thirty-one (31) metres away from the high water mark of any water body unless otherwise authorized by the Nunavut Water Board.
Status	Not Applicable
Reference	BAF-PH1-400-P16-0001 Ege Bay Environmental Protection Plan
Ref. Document Link	N/A

METHODS

No fuel was stored at the Project area in 2024.

RESULTS

Not applicable.

TRENDS

Not applicable.

RECOMMENDATIONS / LESSONS LEARNED

As infrastructure is developed at the Ege Bay Project, Baffinland will ensure re-fueling of all equipment will occur a minimum of thirty-one (31) metres away from the high water mark of any water body and in such a manner as to prevent their release into the environment.

Screening Decision Condition No. 14

Category	Fuel and Chemical Storage
Term or Condition	The Proponent shall use adequate secondary containment or a surface liner (e.g., self-supporting insta-berms and fold-a-tanks) when storing barreled fuel and chemicals at all locations.
Status	Not Applicable
Reference	BAF-PH1-400-P16-0001 Ege Bay Environmental Protection Plan BAF-PH1-400-P16-0002 Ege Bay Spill Contingency Plan
Ref. Document Link	N/A

METHODS

No fuel was stored at the Project area in 2024.

RESULTS

Not applicable.

TRENDS

Not applicable.

RECOMMENDATIONS / LESSONS LEARNED

As infrastructure is developed at the Ege Bay Project, Baffinland will ensure all barreled fuel and chemicals will be stored within adequate secondary containment.

Screening Decision Condition No. 15

Category	Fuel and Chemical Storage
Term or Condition	The Proponent shall ensure that appropriate spill response equipment and clean-up materials (e.g., shovels, pumps, barrels, drip pans, and absorbents) are readily available during any transfer of fuel or hazardous substances, at all fuel storage sites, at all refuelling stations, at vehicle maintenance areas and at drill sites.
Status	Not Applicable
Reference	BAF-PH1-400-P16-0001 Ege Bay Environmental Protection Plan BAF-PH1-400-P16-0002 Ege Bay Spill Contingency Plan
Ref. Document Link	N/A

METHODS

No fuel was stored at the Project area in 2024.

RESULTS

Not applicable.

TRENDS

Not applicable.

RECOMMENDATIONS / LESSONS LEARNED

As infrastructure is developed at the Ege Bay Project, Baffinland will ensure appropriate spill response equipment and clean-up materials are readily available during any transfer of fuel or hazardous substance, at all fuel storage sites, at all re-fuelling stations, at vehicle maintenance areas and at drill sites.

Screening Decision Condition No. 16

Category	Fuel and Chemical Storage
Term or Condition	The Proponent shall remove and treat hydrocarbon contaminated soils on site or transport them to an approved disposal site for treatment.
Status	Not Applicable
Reference	N/A
Ref. Document Link	N/A

METHODS

There were no spills, and therefore no removal of hydrocarbon contaminated soil.

RESULTS

N/A

TRENDS

N/A

RECOMMENDATIONS / LESSONS LEARNED

As infrastructure is developed at the Ege Bay Project, Baffinland will ensure appropriate spill response equipment and clean-up materials are readily available. Any hydrocarbon contaminated soils will be removed and treated either on site or transported to an approved disposal site for treatment.

Screening Decision Condition No. 17

Category	Fuel and Chemical Storage
Term or Condition	The Proponent shall ensure that all personnel are properly trained in fuel and hazardous waste handling procedures, as well as spill response procedures. All spills of fuel or other deleterious materials of any amount must be reported immediately to the 24 hour Spill Line at (867) 920- 8130.
Status	In Compliance
Reference	Eqe Bay Spill Contingency Plan (BAF-PH1-400-P16-0002)
Ref. Document Link	Management Plans available at: https://www.baffinland.com/media-centre/document-portal/ http://www.baffinland.com/document-portal-new/?cat=9&archive=1&lang=en

METHODS

Baffinland ensures that all personnel are properly trained in fuel and hazardous waste handling procedures, as well as spill response procedures, through the use of Baffinland’s Eqe Bay Spill Contingency Plan.

RESULTS

All Baffinland Exploration personnel operating at the Eqe Bay Project are trained and capable in fuel and hazardous waste handling procedures, as well as spill response procedures.

TRENDS

Not applicable.

RECOMMENDATIONS / LESSONS LEARNED

Baffinland will continue to properly train all personnel in fuel and hazardous waste handling procedures, as well as spill response procedures. The best response to a spill is not to have one occur in the first place. As such, Baffinland will continue to adhere to safe fuel handling and refuelling procedures to ensure spills do not occur.

Screening Decision Condition No. 18

Category	Wildlife - General
Term or Condition	The Proponent shall ensure that there is no damage to wildlife habitat in conducting this operation.
Status	Not Applicable
Reference	BAF-PH1-400-P16-0001 Ege Bay Environmental Protection Plan
Ref. Document Link	Management Plans available at: https://www.baffinland.com/media-centre/document-portal/

METHODS

There was no activity carried out by the proponent in the Project area in 2024.

RESULTS

There was no damage to wildlife habitat while conducting operations.

TRENDS

Not applicable.

RECOMMENDATIONS / LESSONS LEARNED

As infrastructure is developed at the Ege Bay Project, Baffinland will make every practicable effort to minimize the disruption to wildlife habitat, consistent with the Environmental Protection Plan (BAF-PH1-400-P16-0001).

Screening Decision Condition No. 19

Category	Wildlife - General
Term or Condition	The Proponent shall not harass wildlife. This includes persistently circling, chasing, hovering over pursuing or in any other way harass wildlife, or disturbing large groups of animals.
Status	Not Applicable
Reference	Environmental Protection Plan (BAF-PH1-400-P16-0001)
Ref. Document Link	Management Plans available at: https://www.baffinland.com/media-centre/document-portal/

METHODS

There was no activity carried out by the proponent in the Project area in 2024.

RESULTS

No wildlife was harassed.

TRENDS

Not applicable.

RECOMMENDATIONS / LESSONS LEARNED

As infrastructure is developed at the Ege Bay Project, Baffinland will continue to adhere to the specific requirements related to wildlife disturbance and harassment.

Screening Decision Condition No. 20

Category	Wildlife - General
Term or Condition	The Proponent shall not hunt or fish, unless proper Nunavut authorizations have been acquired.
Status	In Compliance
Reference	N/A
Ref. Document Link	N/A

METHODS

Baffinland personnel are restricted from hunting or fishing.

RESULTS

Baffinland personnel did not hunt or fish.

TRENDS

Not applicable.

RECOMMENDATIONS / LESSONS LEARNED

Baffinland will continue to ensure that all personnel are aware of and adhere to the no hunting or fishing policy.

Screening Decision Condition No. 21

Category	Wildlife - General
Term or Condition	The Proponent shall ensure that all project personnel are made aware of the measures to protect wildlife and are provided with training and/or advice on how to implement these measures.
Status	Not Applicable
Reference	Environmental Protection Plan (BAF-PH1-400-P16-0001)
Ref. Document Link	Management Plans available at: https://www.baffinland.com/media-centre/document-portal/

METHODS

There was no activity carried out by the proponent in the Project area in 2024 therefore no wildlife of any kind was observed or disturbed.

RESULTS

No disturbance of wildlife of any kind was reported

TRENDS

Not applicable for 2024

RECOMMENDATIONS / LESSONS LEARNED

As infrastructure is developed at the Ege Bay Project, Baffinland will continue to abide by all Acts, Regulations and Guidelines, as well as internal policies to ensure the protection of wildlife. Management plans and training procedures will be continually re-evaluated to ensure best practices regarding wildlife protection are implemented.

Screening Decision Condition No. 22

Category	Migratory Birds and Raptor Disturbance
Term or Condition	The Proponent shall not disturb or destroy the nests or eggs of any birds. If nests are encountered and/or identified, the Proponent shall take precaution to avoid further interaction and or disturbance (e.g., a 100 metres buffer around the nests). If active nests of any birds are discovered (i.e., with eggs or young), the Proponent shall avoid these areas until nesting is complete and the young have left the nest.
Status	Not Applicable
Reference	Environmental Protection Plan (BAF-PH1-400-P16-0001)
Ref. Document Link	Management Plans available at: https://www.baffinland.com/media-centre/document-portal/

METHODS

There was no activity carried out by the proponent in the Project area in 2024 therefore no wildlife of any kind was observed or disturbed.

RESULTS

No disturbance of wildlife of any kind was reported.

TRENDS

Not applicable.

RECOMMENDATIONS / LESSONS LEARNED

Project personnel will continue to be vigilant during field work to ensure avoidance of any interactions with various avian species and their nests. As infrastructure is developed, nest surveys will be conducted prior to ground disturbance to ensure that no nests are disturbed until eggs have hatched and hatchlings have left the nests.

Screening Decision Condition No. 23

Category	Migratory Birds and Raptor Disturbance
Term or Condition	The Proponent shall minimize activities during periods when birds are particularly sensitive to disturbance such as migration, nesting and moulting.
Status	Not Applicable
Reference	Environmental Protection Plan (BAF-PH1-400-P16-0001)
Ref. Document Link	Management Plans available at: https://www.baffinland.com/media-centre/document-portal/

METHODS

There was no activity carried out by the proponent in the Project area in 2024 therefore no wildlife of any kind was observed or disturbed.

RESULTS

No disturbance of wildlife of any kind was reported.

TRENDS

Not applicable.

RECOMMENDATIONS / LESSONS LEARNED

As infrastructure is developed at the Ege Bay Project, monitoring of migratory birds and raptors will continue to be implemented and properly documented. Nest surveys will be conducted prior to ground disturbance to ensure that no nests are disturbed until eggs have hatched and hatchlings have left the nests.

Screening Decision Condition No. 24

Category	Migratory Birds and Raptor Disturbance
Term or Condition	The Proponent shall avoid the seaward site of seabird colonies and areas used by flocks of migrating waterfowl by three (3) kilometres.
Status	Not Applicable
Reference	Environmental Protection Plan (BAF-PH1-400-P16-0001)
Ref. Document Link	Management Plans available at: https://www.baffinland.com/media-centre/document-portal/

METHODS

There was no activity carried out by the proponent in the Project area in 2024 therefore no wildlife of any kind was observed or disturbed.

RESULTS

No disturbance of wildlife of any kind was reported.

TRENDS

Not applicable.

RECOMMENDATIONS / LESSONS LEARNED

As helicopter activity patterns develop at the Ege Bay Project area, planning measures will be put in place to ensure that no flight routes pass within 3 km of common migrating waterfowl points or on the seaward side of any seabird colonies. At present time, there are no known such congregation areas or seabird colonies, however vigilance will continue in observing for and avoiding them.

Screening Decision Condition No. 25

Category	Migratory Birds and Raptor Disturbance
Term or Condition	The Proponent shall ensure its aircraft avoid excessive hovering or circling over areas where bird presence is likely.
Status	Not Applicable
Reference	Environmental Protection Plan (BAF-PH1-400-P16-0001)
Ref. Document Link	Management Plans available at: https://www.baffinland.com/media-centre/document-portal/

METHODS

There was no activity carried out by the proponent in the Project area in 2024 therefore no wildlife of any kind was observed or disturbed.

RESULTS

No disturbance of wildlife of any kind was reported.

TRENDS

Not applicable.

RECOMMENDATIONS / LESSONS LEARNED

Baffinland will continue to enforce compliance with this SD condition and train all employees and helicopter pilots on the procedures to be followed.

Screening Decision Condition No. 26

Category	Aircraft Flight Restrictions
Term or Condition	The Proponent shall not alter flight paths to approach wildlife and shall avoid flying directly over animals.
Status	Not Applicable
Reference	Environmental Protection Plan (BAF-PH1-400-P16-0001)
Ref. Document Link	Management Plans available at: https://www.baffinland.com/media-centre/document-portal/

METHODS

Baffinland advises all pilots and exploration personnel working on the Project of the aircraft flight restrictions and the commitment not to disturb wildlife unless an emergency landing is required. As such, no pilots deliberately alter course to observe, harass or otherwise knowingly disturb wildlife.

RESULTS

There were no recorded instances of breaches of this SD condition.

TRENDS

Not applicable.

RECOMMENDATIONS / LESSONS LEARNED

Baffinland will continue to enforce compliance with this SD condition and train all employees and helicopter pilots on the procedures to be followed.

Screening Decision Condition No. 27

Category	Aircraft Flight Restrictions
Term or Condition	The Proponent shall restrict aircraft/helicopter activity related to the project to a minimum flight altitude of 610 metres above ground level except during landing, take-off or if there is a specific requirement for low-level flying, which does not disturb wildlife or migratory birds.
Status	Not Applicable
Reference	Environmental Protection Plan (BAF-PH1-400-P16-0001)
Ref. Document Link	Management Plans available at: https://www.baffinland.com/media-centre/document-portal/

METHODS

No flights related to Project activities were carried out in 2024.

RESULTS

No applicable

TRENDS

Not applicable in 2024

RECOMMENDATIONS / LESSONS LEARNED

Baffinland will continue to work with their helicopter provider to improve flight height compliance by continuing to communicate elevation requirements and improving documentation of rationale for not meeting the requirements. Particular attention will be paid to ensuring the understanding between magl, not masl, is adhered to. This does take some adjustment for pilots as they are used to flying at fixed altitudes above sea level and the helicopters do not have ground-level reporting altimeters. Unless flying a geophysical survey, helicopter flights generally do not drape topography, especially at higher cruising altitudes such as 650 magl. Baffinland will continue to use a fuel cache at Ege Bay to limit the need for shorter, lower-level flights through the Steensby area. In future years, once a camp is established at Ege Bay, helicopter hours are predicted to drop further, thus further limiting negative effects of helicopter use.

Screening Decision Condition No. 28

Category	Aircraft Flight Restrictions
Term or Condition	The Proponent shall ensure that aircraft maintain a vertical distance of 1000 metres and a horizontal distance of 1,500 metres from any observed groups (colonies) of migratory birds. Aircraft should avoid critical and sensitive wildlife areas at all times by choosing alternate flight corridors.
Status	Not Applicable
Reference	Environmental Protection Plan (BAF-PH1-400-P16-0001)
Ref. Document Link	Management Plans available at: https://www.baffinland.com/media-centre/document-portal/

METHODS

No flights related to Project activities were carried out in 2024.

RESULTS

No applicable

TRENDS

Not applicable in 2024

RECOMMENDATIONS / LESSONS LEARNED

Aircraft flight restrictions and avian distance requirements will continue to be enforced.

Screening Decision Condition No. 29

Category	Aircraft Flight Restrictions
Term or Condition	The Proponent shall ensure that aircraft/helicopter do not, unless for emergency, touch-down in areas where wildlife are present.
Status	Not Applicable
Reference	Environmental Protection Plan (BAF-PH1-400-P16-0001)
Ref. Document Link	Management Plans available at: https://www.baffinland.com/media-centre/document-portal/

METHODS

No flights related to Project activities were carried out in 2024.

RESULTS

No applicable

TRENDS

Not applicable in 2024

RECOMMENDATIONS / LESSONS LEARNED

The method used has worked quite well for avoiding wildlife, especially when paired with a wildlife survey before dropping crews off. These wildlife surveys are done for a field crew safety perspective, looking for polar bears, however occasionally other wildlife is spotted and avoided when a landing area is selected.

Screening Decision Condition No. 30

Category	Aircraft Flight Restrictions
Term or Condition	The Proponent shall advise all pilots of relevant flight restrictions and enforce their application over the project area, including flight paths to/from the project area.
Status	Not Applicable
Reference	Environmental Protection Plan (BAF-PH1-400-P16-0001).
Ref. Document Link	Management Plans available at: https://www.baffinland.com/media-centre/document-portal/

METHODS

No flights related to Project activities were carried out in 2024.

RESULTS

No applicable

TRENDS

Not applicable in 2024.

RECOMMENDATIONS / LESSONS LEARNED

Baffinland continues to follow relevant flight restrictions by enforce their application over and around the project area. All conditions related to flight restrictions is communicated regularly with helicopter pilots and will continue to be.

Screening Decision Condition No. 31

Category	Caribou Disturbance
Term or Condition	The Proponent shall cease activities that may interfere with the migration or calving of caribou, until the caribou have passed or left the area.
Status	Not Applicable
Reference	Environmental Protection Plan (BAF-PH1-400-P16-0001)
Ref. Document Link	Management Plans available at: https://www.baffinland.com/media-centre/document-portal/

METHODS

Baffinland did not perform any activities that would interfere with the migration or calving of caribou.

RESULTS

There was no interference by Baffinland with the migration or calving of caribou.

TRENDS

Not applicable.

RECOMMENDATIONS / LESSONS LEARNED

As infrastructure is developed at the Ege Bay Project, Baffinland will develop and implement policies and procedures to prevent any interference with migration or calving of caribou. Activities likely to interfere with caribou migration or calving will cease until such time as the caribou have passed or left the area.

Screening Decision Condition No. 32

Category	Caribou Disturbance
Term or Condition	The Proponent shall not block or cause any diversion to caribou migration and shall cease activities likely to interfere with migration such as airborne geophysics surveys, drilling or movement of equipment or personnel until such time as the caribou have passed.
Status	Not Applicable
Reference	Environmental Protection Plan (BAF-PH1-400-P16-0001)
Ref. Document Link	Management Plans available at: https://www.baffinland.com/media-centre/document-portal/

METHODS

Baffinland did not perform any activities that would block or cause diversion to caribou migration

RESULTS

Caribou migration was not blocked or diverted by any Baffinland activities.

TRENDS

Not applicable.

RECOMMENDATIONS / LESSONS LEARNED

Baffinland will not block or cause any diversion to caribou migration and will cease activities likely to interfere with migration. As infrastructure is developed at the Ege Bay Project, Baffinland will develop and implement policies and procedures that ensure blocking or diversion of migrating caribou does not occur.

Screening Decision Condition No. 33

Category	Caribou Disturbance
Term or Condition	During the period of May 15 to July 15, the Proponent shall suspend all project operations, including low-level over flights, drilling, blasting/trenching, and use of snowmobiles and all-terrain vehicles outside the immediate vicinity of the camp. Should the results of localized monitoring satisfy the Land Use Inspector that project operations may resume without disturbing pregnant caribou cows or cows with young calves, the suspension may be lifted for the period specified.
Status	Not Applicable
Reference	Environmental Protection Plan (BAF-PH1-400-P16-0001)
Ref. Document Link	Management Plans available at: https://www.baffinland.com/media-centre/document-portal/

METHODS

No activities were carried out in 2024.

RESULTS

No applicable

TRENDS

Not applicable in 2024

RECOMMENDATIONS / LESSONS LEARNED

When Project activities resume, surveying the work area via helicopter will continue to be a vital part of the field crew's activities to ensure the safety of the crew and wildlife in the area. Baffinland will continue to follow relevant flight restrictions by enforce their application over and around the project area. All conditions related to flight restrictions is communicated regularly with helicopter pilots and will continue to be.

Screening Decision Condition No. 34

Category	Caribou Disturbance
Term or Condition	Should pregnant caribou cows, cows with young calves, or groups of 50 or more caribou be observed within one (1) kilometre of project operations at any time, the Proponent shall suspend all operations in the vicinity, including low-level over flights, drilling, blasting/trenching, and use of snow mobiles and all-terrain vehicles outside the immediate vicinity of the camp, until caribou are no longer in the immediate area.
Status	Not Applicable
Reference	Environmental Protection Plan (BAF-PH1-400-P16-0001)
Ref. Document Link	Management Plans available at: https://www.baffinland.com/media-centre/document-portal/

METHODS

No activities were carried out in 2024.

RESULTS

No applicable

TRENDS

Not applicable in 2024.

RECOMMENDATIONS / LESSONS LEARNED

Baffinland field personnel will continue to be observant of all caribou and ensure that no field activities knowingly occur within 1 km of any caribou. As project infrastructure is developed, such as the camp, or drilling activity commences, strict adherence to this condition will apply to ensure the limiting of disturbance to caribou of any kind.

Screening Decision Condition No. 35

Category	Ground Disturbance
Term or Condition	The Proponent shall not move any equipment or vehicles unless the ground surface is in a state capable of fully supporting the equipment or vehicles without rutting or gouging. Overland travel of equipment or vehicles must be suspended if rutting occurs.
Status	Not Applicable
Reference	Environmental Protection Plan (BAF-PH1-400-P16-0001)
Ref. Document Link	Management Plans available at: https://www.baffinland.com/media-centre/document-portal/

METHODS

No equipment or vehicles were mobilized in 2024 for the Project.

RESULTS

No equipment or vehicles caused rutting or gouging.

TRENDS

Not applicable.

RECOMMENDATIONS / LESSONS LEARNED

Baffinland will implement the SD Condition when it becomes applicable.

Screening Decision Condition No. 36

Category	Ground Disturbance
Term or Condition	The Proponent shall implement suitable dust, erosion and sediment suppression measures on all areas before, during and after conducting activities in order to prevent sediments or fugitive dust from entering any waterbody or surrounding environment.
Status	Not Applicable
Reference	Environmental Protection Plan (BAF-PH1-400-P16-0001).
Ref. Document Link	Management Plans available at: https://www.baffinland.com/media-centre/document-portal/

METHODS

No activities were performed in 2024 that would result in dust, erosion or sedimentation in 2024 for the Project.

RESULTS

Not applicable.

TRENDS

Not applicable.

RECOMMENDATIONS / LESSONS LEARNED

Baffinland will implement the SD Condition and appropriate management plan mitigation measures when it becomes applicable.

Screening Decision Condition No. 37

Category	Ground Disturbance
Term or Condition	All construction and road vehicles must be fitted with standard and well-maintained noise suppression devices and engine idling is to be minimized.
Status	Not Applicable
Reference	N/A
Ref. Document Link	N/A

METHODS

No equipment or vehicles were mobilized in 2024 for the Project.

RESULTS

Not applicable.

TRENDS

Not applicable.

RECOMMENDATIONS / LESSONS LEARNED

Baffinland will implement the SD Condition when it becomes applicable.

Screening Decision Condition No. 38

Category	Establishment of New Quarries
Term or Condition	The Proponent shall clearly stake and flag pit and quarry boundaries, so they remain visible to other land users.
Status	Not Applicable
Reference	N/A
Ref. Document Link	N/A

METHODS

No quarries were developed in 2024 for the Project.

RESULTS

Not applicable.

TRENDS

Not applicable.

RECOMMENDATIONS / LESSONS LEARNED

Baffinland will implement the SD Condition when it becomes applicable.

Screening Decision Condition No. 39

Category	Establishment of New Quarries
Term or Condition	The Proponent shall locate quarry/pit facilities so as to avoid all recreational sites and public use areas, and to protect unique geographical features and natural aesthetics.
Status	Not Applicable
Reference	N/A
Ref. Document Link	N/A

METHODS

No quarries were developed in 2024 for the Project.

RESULTS

Not applicable.

TRENDS

Not applicable.

RECOMMENDATIONS / LESSONS LEARNED

Baffinland will implement the SD Condition when it becomes applicable.

Screening Decision Condition No. 40

Category	Establishment of New Quarries
Term or Condition	The Proponent shall ensure there is no obstruction of natural drainage, flooding or channel diversion from quarry/pit access, stockpiles, or other structures or facilities.
Status	Not Applicable
Reference	N/A
Ref. Document Link	N/A

METHODS

No quarries were developed in 2024 for the Project.

RESULTS

Not applicable.

TRENDS

Not applicable.

RECOMMENDATIONS / LESSONS LEARNED

Baffinland will implement the SD Condition when it becomes applicable.

Screening Decision Condition No. 41

Category	Establishment of New Quarries
Term or Condition	The Proponent shall ensure that silt fences/curtains are installed down gradient of any quarry activities.
Status	Not Applicable
Reference	N/A
Ref. Document Link	N/A

METHODS

No quarries were developed in 2024 for the Project.

RESULTS

Not applicable.

TRENDS

Not applicable.

RECOMMENDATIONS / LESSONS LEARNED

Baffinland will implement the SD Condition when it becomes applicable.

Screening Decision Condition No. 42

Category	Establishment of New Quarries
Term or Condition	The Proponent shall maintain an undisturbed buffer zone of at least 100 metres between quarry site and any high-water mark of any water body. Alternately: The Proponent shall maintain an undisturbed buffer zone between the periphery of quarry sites and the high-water mark of any water body that is of an adequate distance to ensure erosion control.
Status	Not Applicable
Reference	N/A
Ref. Document Link	N/A

METHODS

No quarries were developed in 2024 for the Project.

RESULTS

Not applicable.

TRENDS

Not applicable.

RECOMMENDATIONS / LESSONS LEARNED

Baffinland will implement the SD Condition when it becomes applicable.

Screening Decision Condition No. 43

Category	Establishment of New Quarries
Term or Condition	The Proponent shall locate screening and crushing equipment on stable ground, at a location with ready access to stockpiles.
Status	Not Applicable
Reference	N/A
Ref. Document Link	N/A

METHODS

No quarries were developed in 2024 for the Project.

RESULTS

Not applicable.

TRENDS

Not applicable.

RECOMMENDATIONS / LESSONS LEARNED

Baffinland will implement the SD Condition when it becomes applicable.

Screening Decision Condition No. 44

Category	Establishment of New Quarries
Term or Condition	The Proponent shall use water or other non-toxic and biodegradable additives for dust suppression as necessary to maintain ambient air quality without causing water to pool or runoff.
Status	Not Applicable
Reference	N/A
Ref. Document Link	N/A

METHODS

No quarries were developed in 2024 for the Project.

RESULTS

Not applicable.

TRENDS

Not applicable.

RECOMMENDATIONS / LESSONS LEARNED

Baffinland will implement the SD Condition when it becomes applicable.

Screening Decision Condition No. 45

Category	Drilling on Land
Term or Condition	The Proponent shall not conduct any land based drilling or mechanized clearing within thirty-one (31) metres of the normal high-water mark of a water body unless otherwise authorized by the Nunavut Water Board.
Status	Not Applicable
Reference	N/A
Ref. Document Link	N/A

METHODS

No drilling was completed in 2024 for the Project.

RESULTS

Not applicable.

TRENDS

Not applicable.

RECOMMENDATIONS / LESSONS LEARNED

Baffinland will implement the SD Condition when it becomes applicable.

Screening Decision Condition No. 46

Category	Drilling on Land
Term or Condition	The Proponent shall not allow any drilling wastes to spread to the surrounding lands or water bodies.
Status	Not Applicable
Reference	N/A
Ref. Document Link	N/A

METHODS

No drilling was completed in 2024 for the Project.

RESULTS

Not applicable.

TRENDS

Not applicable.

RECOMMENDATIONS / LESSONS LEARNED

Baffinland will implement the SD Condition when it becomes applicable.

Screening Decision Condition No. 47

Category	Drilling on Land
Term or Condition	If an artesian flow is encountered, the Proponent shall ensure the drill hole is immediately plugged and permanently sealed.
Status	Not Applicable
Reference	N/A
Ref. Document Link	N/A

METHODS

No drilling was completed in 2024 for the Project.

RESULTS

Not applicable.

TRENDS

Not applicable.

RECOMMENDATIONS / LESSONS LEARNED

Baffinland will implement the SD Condition when it becomes applicable.

Screening Decision Condition No. 48

Category	Drilling on Land
Term or Condition	The Proponent shall ensure that all drill areas are constructed to facilitate minimizing the environmental footprint of the project area. Drill areas should be kept orderly with garbage removed daily to an approved disposal site.
Status	Not Applicable
Reference	N/A
Ref. Document Link	N/A

METHODS

No drilling was completed in 2024 for the Project.

RESULTS

Not applicable.

TRENDS

Not applicable.

RECOMMENDATIONS / LESSONS LEARNED

Baffinland will implement the SD Condition when it becomes applicable.

Screening Decision Condition No. 49

Category	Drilling on Land
Term or Condition	The Proponent shall ensure that all sump/depression capacities are sufficient to accommodate the volume of waste water and any fines that are produced. The sumps shall only be used for inert drilling fluids, and not any other materials or substances.
Status	Not Applicable
Reference	N/A
Ref. Document Link	N/A

METHODS

No drilling was completed in 2024 for the Project.

RESULTS

Not applicable.

TRENDS

Not applicable.

RECOMMENDATIONS / LESSONS LEARNED

Baffinland will implement the SD Condition when it becomes applicable.

Screening Decision Condition No. 50

Category	Drilling on Land
Term or Condition	The Proponent shall not locate any sump within thirty-one (31) metres of the normal highwater mark of any water body unless otherwise authorized by the Nunavut Water Board. Sumps and areas designated for waste disposal shall be sufficiently bermed or otherwise contained to ensure that substances do not enter a waterway.
Status	Not Applicable
Reference	N/A
Ref. Document Link	N/A

METHODS

No drilling was completed in 2024 for the Project.

RESULTS

Not applicable.

TRENDS

Not applicable.

RECOMMENDATIONS / LESSONS LEARNED

Baffinland will implement the SD Condition when it becomes applicable.

Screening Decision Condition No. 51

Category	Drilling on Land
Term or Condition	The Proponent shall ensure all drill holes are backfilled or capped prior to the end of each field season. All sumps must be backfilled and restored to original or stable profile prior to the end of each field season.
Status	Not Applicable
Reference	N/A
Ref. Document Link	N/A

METHODS

No drilling was completed in 2024 for the Project.

RESULTS

Not applicable.

TRENDS

Not applicable.

RECOMMENDATIONS / LESSONS LEARNED

Baffinland will implement the SD Condition when it becomes applicable.

Screening Decision Condition No. 52

Category	Temporary Camps
Term or Condition	The Proponent shall ensure that all camps are located on gravel, sand or other durable land.
Status	In Compliance
Reference	Eqe Bay Environmental Protection Plan (BAF-PH1-400-P16-0001) Eqe Bay Closure and Reclamation Plan (BAF-PH1-400-P16-0003)
Ref. Document Link	Management Plans available at: https://www.baffinland.com/media-centre/document-portal/http://www.baffinland.com/document-portal-new/?cat=9&archive=1&lang=en

METHODS

Accommodation camps were not constructed in 2024. However, a temporary survival shack was set up in 2019 (UTM NAD83 18W 430790E, 7729380N), on a flat paleo-beach surface in the Project area (Figure 4.2). This survival shack remained on the project area for 2024. This was deemed the most durable land for set up as the beach cobbles are very durable and there is very little vegetation growing in the area. The cobbles have an approximate average size of 20 cm x 10 cm x 4 cm. The tent was placed on an area with no moss or grass growing (Figure 4.3).

RESULTS

The temporary survival shack was set up on durable land in the form of a flat, cobbled paleo beach surface. No scarring of the land is visible.

TRENDS

Not applicable.

RECOMMENDATIONS / LESSONS LEARNED

All future camp infrastructure, as much as practicable, will be developed on durable land to minimize scarring to the landscape.



Figure 4.3: Survival Tent Placed on Cobbled Paleo-Beach Surface

Screening Decision Condition No. 53

Category	Temporary Camps
Term or Condition	The Proponent shall ensure that the land use area is kept clean and tidy at all times.
Status	In Compliance
Reference	Eqe Bay Environmental Protection Plan (BAF-PH1-400-P16-0001) Eqe Bay Closure and Reclamation Plan (BAF-PH1-400-P16-0003)
Ref. Document Link	Management Plans available at: https://www.baffinland.com/media-centre/document-portal/http://www.baffinland.com/document-portal-new/?cat=9&archive=1&lang=en

METHODS

Accommodation camps were not constructed in 2024. However, a temporary survival shack remained in the project area for 2024 after it was mobilized in 2019 for emergency purposes only, and under approval from QIA was left at the Project location at the end of the field season. No waste was left behind.

RESULTS

The land use area was kept clean and tidy at all times. As mentioned in SD Condition No. 7, no access to the site occurred in 2024, thus no waste was produced.

TRENDS

Not applicable.

RECOMMENDATIONS / LESSONS LEARNED

As infrastructure is developed at the Project, Baffinland will ensure the land use area is kept clean and tidy at all times by frequently monitoring all camp facilities including temporary structures. Construction of temporary camps are to be firmly secured with additional materials used as needed. This will decrease the likelihood of loose material and ensure the land use area is protected.

Screening Decision Condition No. 54

Category	Restoration of Disturbed Areas
Term or Condition	The Proponent shall remove all garbage, fuel and equipment upon abandonment.
Status	In Compliance
Reference	Eqe Bay Environmental Protection Plan (BAF-PH1-400-P16-0001) Eqe Bay Closure and Reclamation Plan (BAF-PH1-400-P16-0003)
Ref. Document Link	Management Plans available at: https://www.baffinland.com/media-centre/document-portal/http://www.baffinland.com/document-portal-new/?cat=9&archive=1&lang=en

METHODS

Prior to the end of each field season, all garbage, fuel and equipment are removed from the Project area. As there was no site access in 2024, no disturbance of any kind occurred.

RESULTS

The Project is not in the closure/abandonment stage and is still undergoing active exploration.

TRENDS

Not applicable.

RECOMMENDATIONS / LESSONS LEARNED

Baffinland will honor the commitments made with respect to closure, reclamation and abandonment as outlined in the Eqe Bay Closure and Reclamation Plan.

Screening Decision Condition No. 55

Category	Restoration of Disturbed Areas
Term or Condition	The Proponent shall ensure that all disturbed areas are restored to a stable or pre-disturbed state as practical as possible upon completion of field work.
Status	In Compliance
Reference	Ege Bay Environmental Protection Plan (BAF-PH1-400-P16-0001) Ege Bay Closure and Reclamation Plan (BAF-PH1-400-P16-0003)
Ref. Document Link	Management Plans available at: https://www.baffinland.com/media-centre/document-portal/http://www.baffinland.com/document-portal-new/?cat=9&archive=1&lang=en

METHODS

Baffinland will execute the Closure and Reclamation plan, including opportunities for progressive reclamation throughout the life of the project. This will include reducing the footprint of disturbance wherever possible, and grading, re-contouring and scarifying disturbed areas on closure to promote stability, drainage and revegetation.

RESULTS

There was no Project activity in 2024, resulting in no disturbance of the ground surface.

TRENDS

Not applicable.

RECOMMENDATIONS / LESSONS LEARNED

Baffinland will ensure that minimal initial disturbance occurs during the development of the proposed exploration camp and drill areas. A photographic record will be captured for before, during and after of each site to be disturbed to ensure compliance with this Condition.

Screening Decision Condition No. 56

Category	Restoration of Disturbed Areas
Term or Condition	The Proponent shall complete all clean-up and restoration of the lands used prior to the end of each field season and/or upon abandonment of site.
Status	In Compliance
Reference	Eqe Bay Environmental Protection Plan (BAF-PH1-400-P16-0001) Eqe Bay Closure and Reclamation Plan (BAF-PH1-400-P16-0003)
Ref. Document Link	Management Plans available at: https://www.baffinland.com/media-centre/document-portal/http://www.baffinland.com/document-portal-new/?cat=9&archive=1&lang=en

METHODS

Baffinland will execute the Closure and Reclamation plan, including opportunities for progressive reclamation throughout the life of the project. This will include reducing the footprint of disturbance wherever possible, and grading, re-contouring and scarifying disturbed areas on closure to promote stability, drainage and revegetation.

RESULTS

There was no Project activity in 2024, resulting in no disturbance of the ground surface.

TRENDS

Not applicable.

RECOMMENDATIONS / LESSONS LEARNED

Baffinland will continue to ensure that progressive clean-up of fieldwork areas is completed. Baffinland will ensure that minimal initial disturbance occurs during the development of the proposed exploration camp and drill areas. A photographic record will be captured for before, during and after of each site to be disturbed to ensure compliance with this Condition.

Screening Decision Condition No. 57

Category	Other
Term or Condition	The Proponent should consult with local residents regarding their activities in the area and solicit available Inuit Qaujimaningit and information that can inform project activities.
Status	Not Applicable
Reference	N/A
Ref. Document Link	N/A

METHODS

No engagement activities related to the Project occurred in 2024.

RESULTS

Not applicable.

TRENDS

Not applicable.

RECOMMENDATIONS / LESSONS LEARNED

Community outreach in various forms will be planned for Sanirajak and Igloolik, to occur prior to any infrastructure development in the Ege Bay area, and specifically to notify the Hamlet Councils and Hunters and Trappers Associations of the planned activities and solicit community feedback. Ongoing communication between the Company and the communities will be essential to fostering goodwill and social license to operate the Ege Bay Project. It is anticipated that with potential future success of the Project, broader community engagement will be required to further engage Inuit on Inuit Qaujimaningit (IQ) and incorporate learnings into future Project development. Should no infrastructure development occur in 2025, at minimum letters will be sent to the two affected communities explaining this and elaborate, to the extent practicable, on reasons why and proposed future development timelines.

Screening Decision Condition No. 58

Category	Other
Term or Condition	The Proponent shall ensure that project activities do not interfere with Inuit wildlife harvesting or traditional land use activities.
Status	In Compliance
Reference	N/A
Ref. Document Link	N/A

METHODS

Baffinland staff and contractors working on the Project monitor for signs of Inuit land use, whether that be hunting or other land uses. These are recorded on a land use log maintained in the helicopter to document any such activities, as no infrastructure currently exists on Site. Baffinland practices are to avoid Inuit land users so as not to interfere with hunting and land use activities.

RESULTS

No Project activity occurred in 2024, resulting in no observance of Inuit land use.

TRENDS

Not applicable

RECOMMENDATIONS / LESSONS LEARNED

Baffinland has not encountered any Inuit wildlife harvesting or traditional land use activities in the immediate Project area, however observations of Inuit land use in areas adjacent to the Project area in prior years does confirm land use in the area of the Project. Baffinland field personnel and contractors will continue to employ best efforts to avoid disturbing or interfering with any traditional land use.

Screening Decision Condition No. 59

Category	Other
Term or Condition	The Proponent should, to the extent possible, hire local people and access local services where possible.
Status	Not Applicable
Reference	N/A
Ref. Document Link	N/A

METHODS

Not applicable in 2024 due to no Project activity

RESULTS

Not applicable.

TRENDS

Not applicable.

RECOMMENDATIONS / LESSONS LEARNED

As infrastructure is developed at the Ege Bay Project, and the scope of work becomes more in line with the approved Screening Decision, Baffinland will continue to hire local people and access local services where possible.

5 MANAGEMENT PLAN UPDATES

Table 5.1 provides an extensive list of all the Management Plans for the Eqe Bay Project.

There were no updates to Eqe Bay Project specific management plans in 2024.

Table 5.1: Current List of Environmental Monitoring and Management Plans

Document Number	Plan Name	Current Revision Date
BAF-PH1-400-P16-001	Eqe Bay Environmental Protection Plan	Feb-19
BAF-PH1-400-P16-002	Eqe Bay Spill Contingency Plan	Jul-20
BAF-PH1-400-P16-003	Eqe Bay Closure and Reclamation Plan	Feb-19
BAF-PH1-400-P16-004	Eqe Bay Inspection and Monitoring Plan	Feb-19
BAF-PH1-400-P16-005	Eqe Bay Waste Management Plan	Feb-19

A copy of Baffinland’s Environmental Management Plans are available on the document web portal:
<https://www.baffinland.com/media-centre/document-portal/>.

6 REFERENCES

Nunavut Impact Review Board (NIRB), 2018. Nunavut Impact Review Board – Screening Decision Report Baffinland Iron Mine Corporation - NIRB File No. 18-EN-026. August 17, 2018.