



## **Gibson MacQuoid Project**

Kivalliq Inuit Association: Land Use Permit KVL117B04 (expired)  
NIRB Project Reference Number: 17EN029  
INAC Land Use Permit: N2018C0016  
NWB Licence: 2BE-GMB1823

## ***Annual Report***

**2022**

North Country Gold Corp.  
January 2023

## 1.0 **TABLE OF CONTENTS**

1.0	TABLE OF CONTENTS .....	15
2.0	BACKGROUND .....	18
3.0	PROJECT DESCRIPTION.....	18
3.1	Camps .....	20
3.2	Caches .....	20
3.3	Deposit .....	20
3.4	Regional Prospects .....	20
4.0	2017 WORK ACTIVITIES .....	21
4.1	Mineral Exploration Activities .....	21
4.1.1	Till Sampling.....	21
4.1.2	Aerial Drone Imagery .....	23
5.0	2018 WORK ACTIVITIES .....	24
5.1	Mineral Exploration Activities .....	24
5.1.1	Infill Till Sampling .....	24
5.1.2	Rock Sampling .....	26
5.2	Camp Usage .....	28
5.3	Local Hiring .....	28
5.4	Consultation .....	28
6.0	2019 WORK ACTIVITIES .....	29
6.1	Expenditure .....	31
7.0	2020 WORK ACTIVITIES .....	31
8.0	LAND USE INSPECTIONS.....	31
9.0	WATER.....	31
9.1	Water Use .....	31
9.2	Water Sampling.....	31
10.0	WILDLIFE .....	32
11.0	SPILLS.....	33

## **List of Tables**

Table 1: GMP Permits and Licences .....	18
Table 2: GMP Temporary Camp and Esker Strip used during 2018 .....	20
Table 3: Local Community Hires by Position and Community - 2018.....	28
Table 4: Wildlife sightings - 2017 .....	32
Table 5: Wildlife sightings - 2018.....	32
Table 6: Wildlife sightings - 2019.....	33

## **List of Figures**

Figure 1: Gibson MacQuoid Project Overview.....	19
Figure 2: 2017 Drone Taking Off – GMP, August 2017 .....	<b>Error! Bookmark not defined.</b>
Figure 3: 2017 Till Sampling Coverage .....	22
Figure 4: 2017 UAV coverage .....	23
Figure 5: Typical Infill Till Sampling Station .....	24
Figure 6: 2018 Infill Till Sampling Coverage .....	25
Figure 7: Typical Rock Sampling Outcrop .....	26
Figure 8: 2018 Rock Sampling Coverage.....	27
Figure 9: 2019 Staking Program.....	30

## DISTRIBUTION

<b>Organization</b>	<b>Distribution Email</b>
Indigenous and Northern Affairs Canada (INAC)	Aadnc.landsmining.aandc@canada.ca
Environment Canada (EC)	enviroinfo@ec.gc.ca
Government of Nunavut – Department of Environment (GN-DOE)	environment@gov.nu.ca
Kivalliq Inuit Association (KivIA)	Imanzo@kivalliqinuit.ca, bosmond@kivalliqinuit.ca, gkarlik@kivalliqinuit.ca
Nunavut Impact Review Board (NIRB)	info@nirb.ca
Nunavut Water Board (NWB)	licensing@nwb-oen.ca

## 2.0 **BACKGROUND**

In October 2020 Auryn Resources Inc. was renamed Fury Gold Mines Limited ('Fury'). Fury is a Canadian-focused high-grade gold exploration company strategically positioned within established mining districts in Canada. North County Gold Corp. (NCGC) is a wholly own subsidiary of Fury and is the operator of the Gibson-MacQuoid Project (GMP). Fury's management team is highly experienced with an impressive track record of success in discovery and development, including the advancement of two gold projects located in West Africa and Mexico.

No exploration activities were undertaken in 2021 on the GMP.

Fury's exploration strategy for the Gibson MacQuoid Project is to identify deposits within the Gibson MacQuoid Belt via regional grassroots exploration. Innovative and cost-effective exploration techniques form a large part of the exploration strategy for the GMP. Unmanned Aerial Vehicles (UAV) photography is used to this end by minimizing the use of helicopters and reducing the overall environmental impact of the exploration activities.

The GMP is made up of mineral claims and prospecting permits located on Crown Land and surface Inuit Owned Lands (IOLs) which are subject to the Nunavut Land Claims Agreement (NLCA). See Table 1 for GMP permits and licences for grassroots exploration activities on the GMP. As per discussions with the Kivalliq Inuit Association, no work was conducted on Inuit Owned Lands at any time within the Core Calving or Post Calving Ranges. Additional measures were taken to further mitigate any unnecessary impact on the Caribou Calving ranges.

Organization	Description	Permit/Licence #
Nunavut Impact Review Board (NIRB)	Project Reference Number	17EN029
Kivalliq Inuit Association	Land Use Licence	KVL117B04 (expired)
Indigenous and Northern Affairs Canada (INAC)	Land Use Permit (Temporary camp)	N2018C0016
Nunavut Water Board (NWB)	Water Licence	2BE-GMB1823

**Table 1: GMP Permits and Licences**

## 3.0 **PROJECT DESCRIPTION**

A land package of 47 mineral claims covering 54,531.76 hectares currently comprise the GMP. This land package lies within a 120-km long corridor of greenstone positioned sub-parallel to greenstone belts hosting Agnico Eagle's Meadowbank and Meliadine Mines, within the Kivalliq region of Nunavut Territory. The location and distance to local communities can be seen in Figure 1.

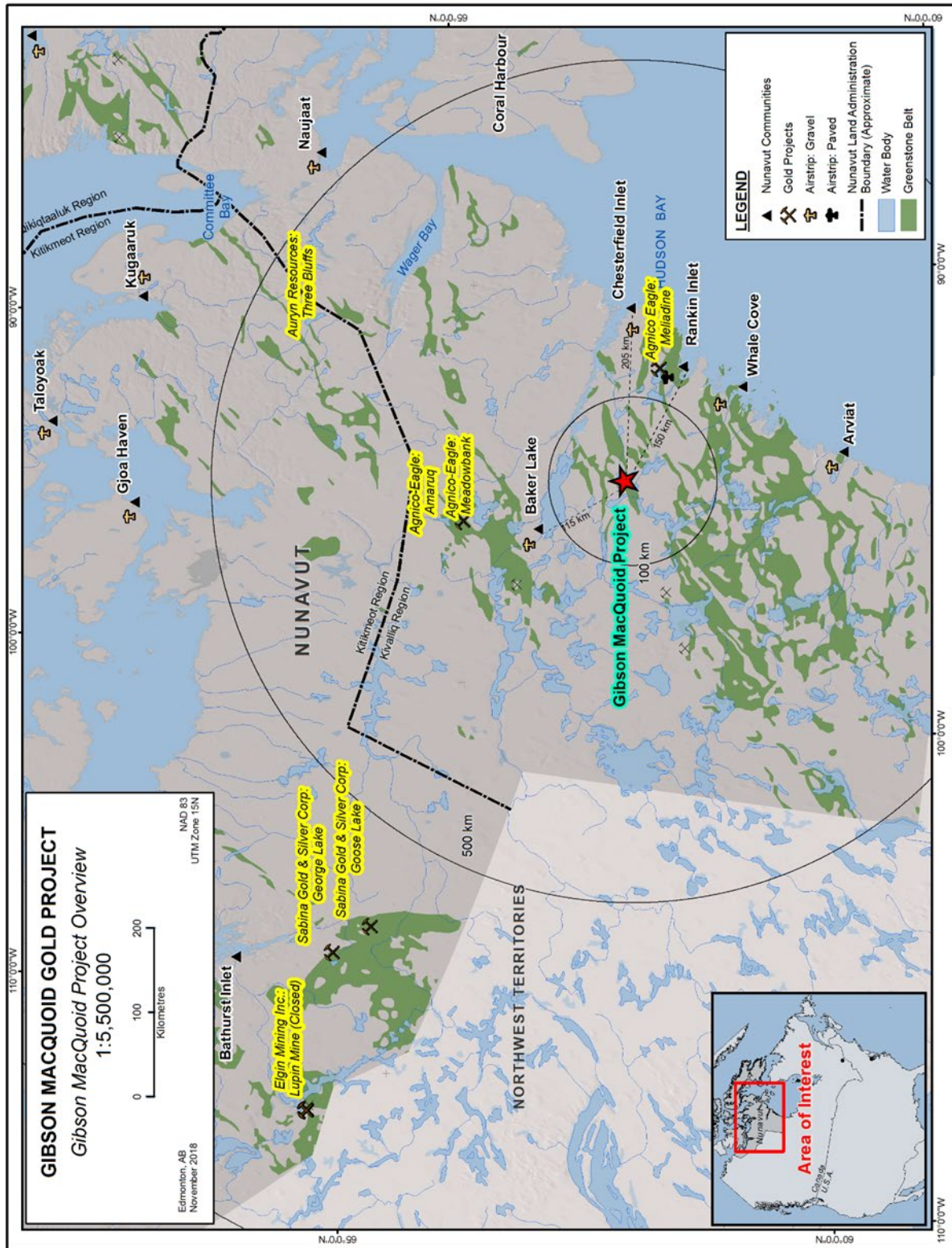


Figure 1: Gibson MacQuoid Project Overview

The GMP covers approximately 54,531.76 hectares with several gold occurrences in close proximity. Historic sampling in the area has returned values up to 230 g/t Au. A temporary camp and esker airstrip were established on the GMP and was fully reclaimed at the end of the 2018 field program. The 2019 staking program was based out of Baker Lake. No work was carried out on the project in 2020 or 2021.

### **3.1 Camps**

A temporary tented camp was established during the 2018 exploration season and a temporary esker strip was used to ferry from Baker Lake and Rankin Inlet. Both were fully reclaimed at the end of the 2018 field season.

<b>Site</b>	<b>UTM Coordinates (NAD 83)</b>			<b>Latitude</b>	<b>Longitude</b>
<i>Name</i>	<i>Zone</i>	<i>Easting (m)</i>	<i>Northing (m)</i>	<i>D°M'S"</i>	<i>D°M'S"</i>
GMP Temp Camp	15 N	446,071	7,078,015	63°49'31.2" N	94°05'44.8" W
GMP Temp Esker Strip	15 N	431,041	7,086,954	63°54'10.4" N	94°24'18.2" W

**Table 2: GMP Temporary Camp and Esker Strip used during 2018**

### **3.2 Caches**

No caches were established.

### **3.3 Deposit**

No deposits have been identified to date.

### **3.4 Regional Prospects**

The GMP is a grassroots exploration stage project stretching over 120 km of prospective greenstone belt with several high-grade gold occurrences identified during historic exploration campaigns.

Agnico-Eagle's Meliadine producing gold mine situated to the southeast of the GMP area, is hosted by similar lithologies as encountered on the Gibson MacQuoid Greenstone Belt (Figure 1).



## 4.0 **2017 WORK ACTIVITIES**

The 2017 exploration program comprised regional till sampling and collection of high resolution imagery via Unmanned Aerial Vehicle (UAV) surveying, along with staking 57 new claims. Activities occurred on mineral claims and prospecting permits on both Crown and Inuit Owned surface lands.

### ***4.1 Mineral Exploration Activities***

#### ***4.1.1 Till Sampling***

Regional till geochemical sampling was undertaken to identify anomalous zones for further exploration and potential drill targets. The regional till sampling program comprised 2,782 samples (Figure 4).



**Figure 2: 2017 Drone Taking Off – GMP, August 2017**



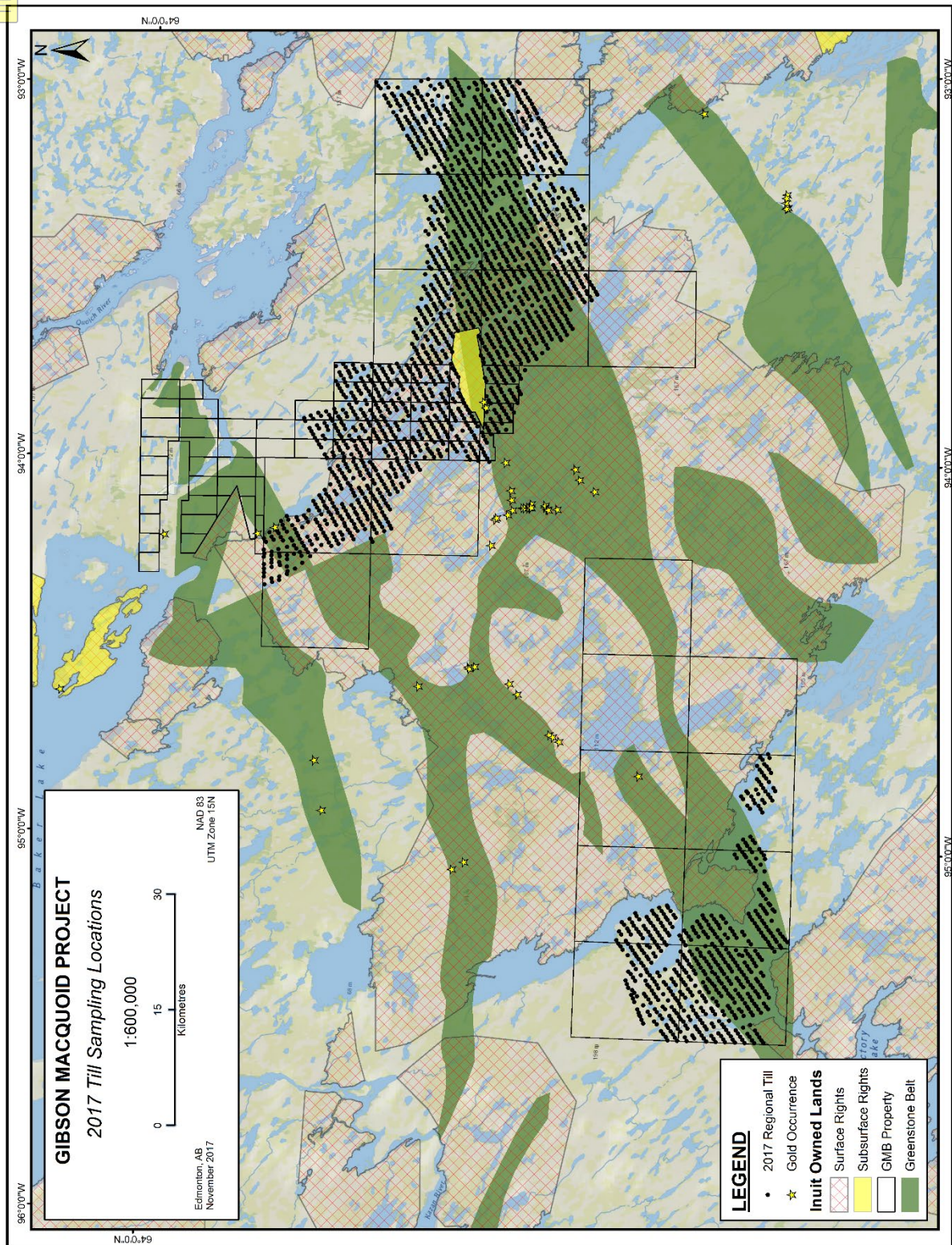


Figure 3: 2017 Till Sampling Coverage



#### 4.1.2 Aerial Drone Imagery

An aerial drone survey was flown during the 2017 field season to provide high resolution imagery and digital terrain models covering the entire GMP (Figure 5). Approximately 1,081 km<sup>2</sup> of imagery and digital elevation data was collected at a resolution of approximately 10 cm.

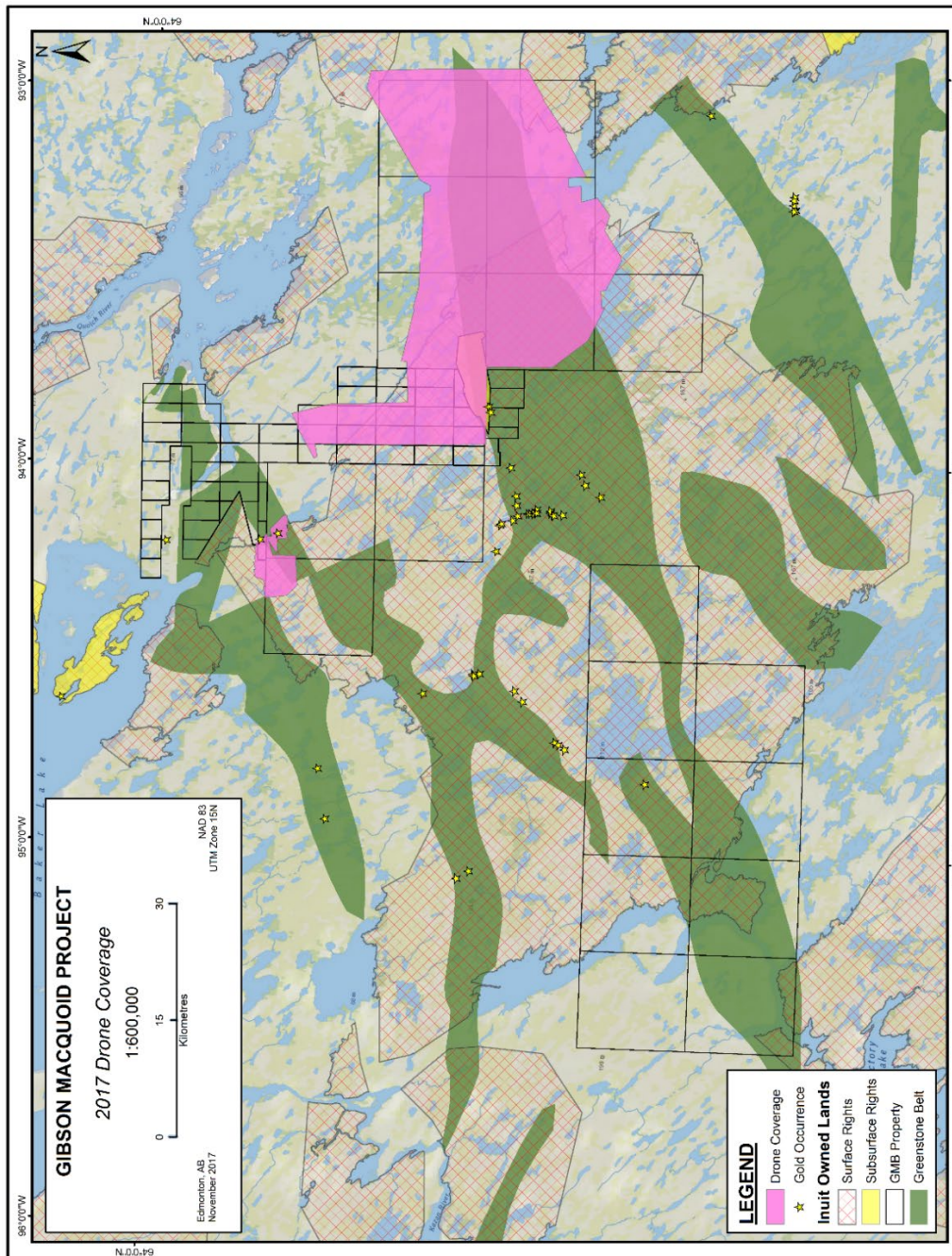


Figure 4: 2017 UAV coverage

## 5.0 **2018 WORK ACTIVITIES**

The 2018 exploration program comprised detailed infill till sampling and rock grab samples from outcrop and boulders. Activities occurred on mineral claims and prospecting permits on both Crown and Inuit Owned surface lands.

### ***5.1 Mineral Exploration Activities***

#### ***5.1.1 Infill Till Sampling***

Detailed infill till geochemical sampling was undertaken to identify anomalous zones for further exploration and potential drill targets. The infill till sampling program comprised the collection of 2,926 samples (Figure 3 and 4).



**Figure 5: Typical Infill Till Sampling Station**



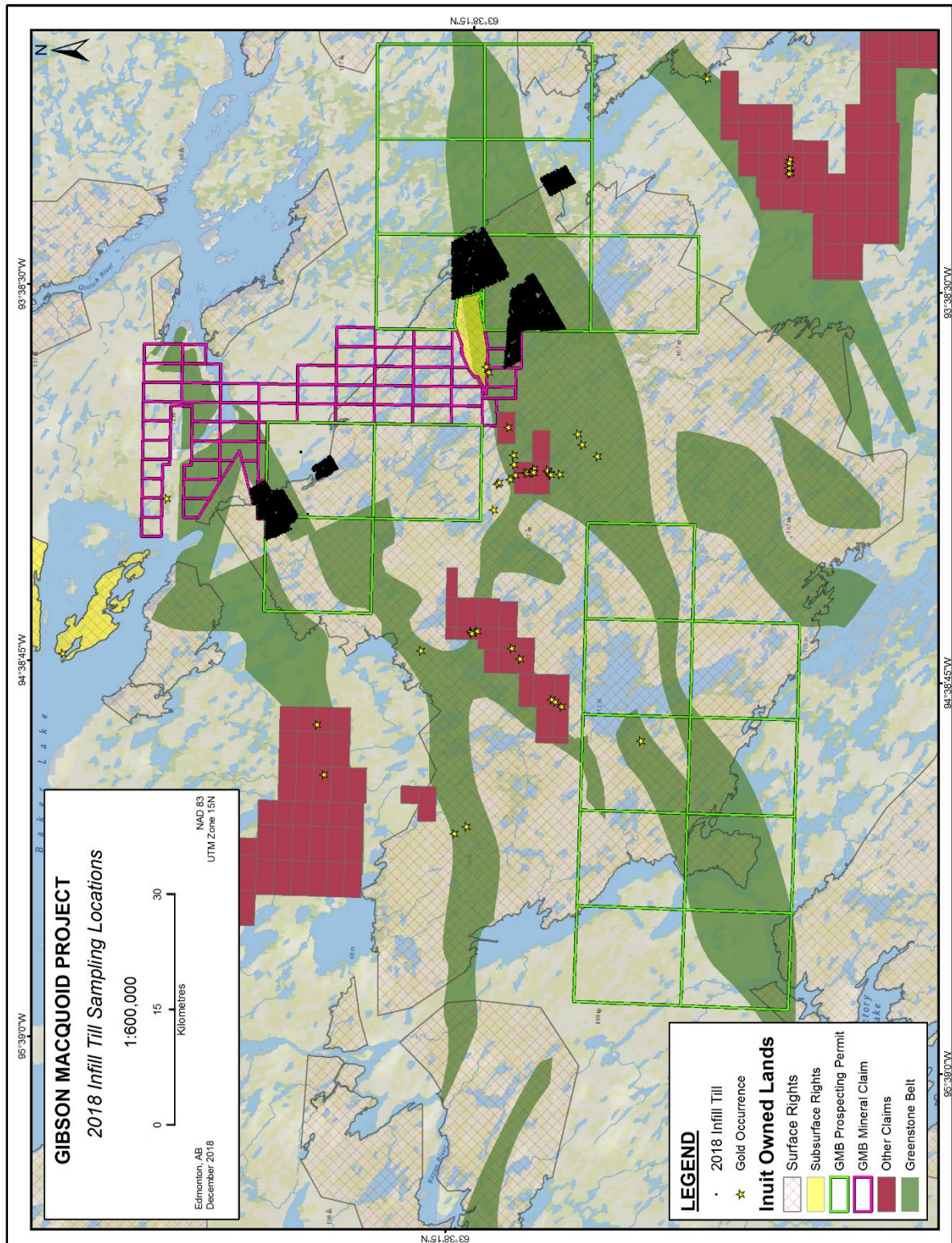


Figure 6: 2018 Infill Till Sampling Coverage



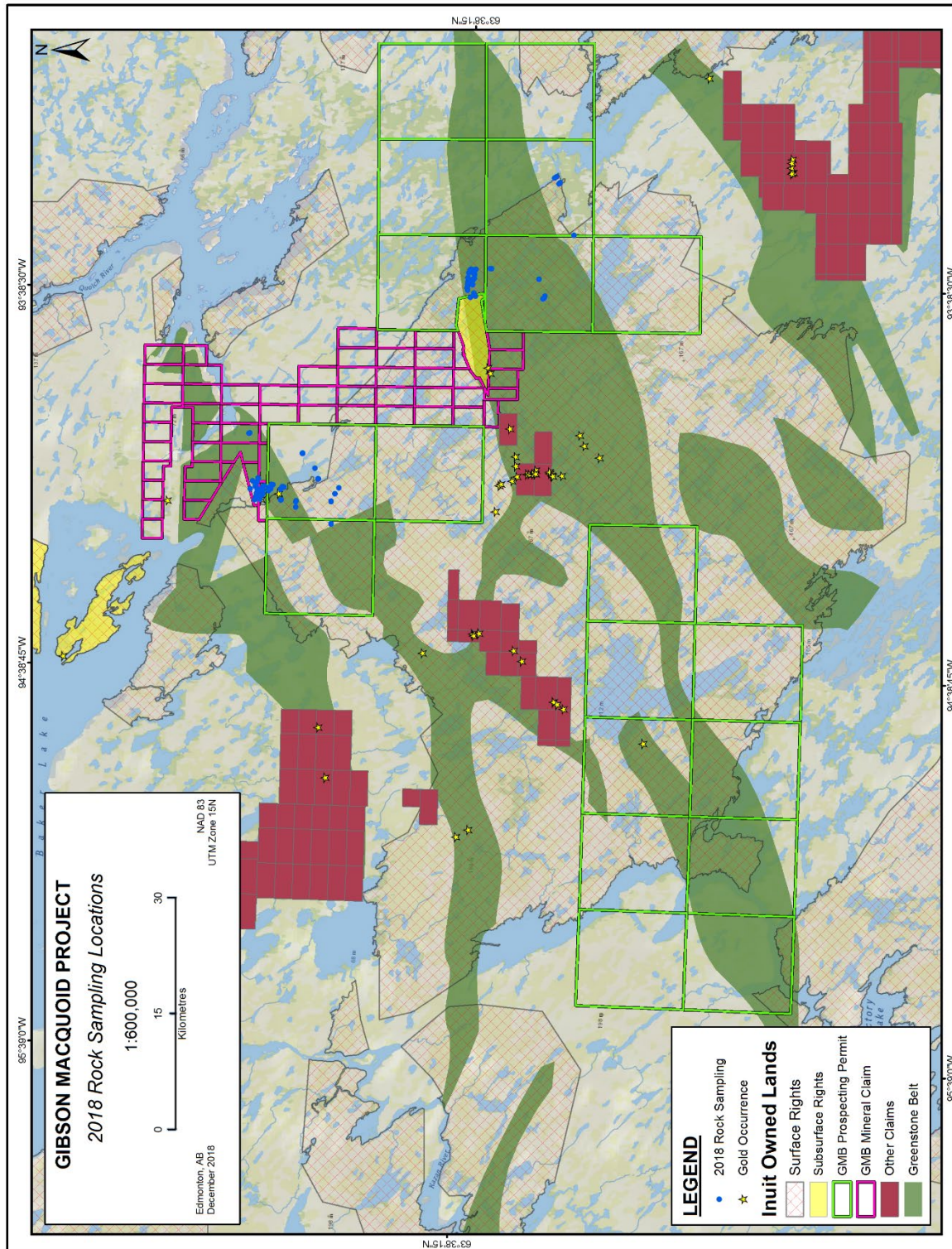
### 5.1.2 Rock Sampling

A boulder and outcrop geochemical sampling program containing 121 samples was undertaken during the 2018 field season shown in Figure 5 and 6.



**Figure 7: Typical Rock Sampling Outcrop**





**Figure 8: 2018 Rock Sampling Coverage**

## **5.2 Camp Usage**

The temporary camp that was established during 2018 was inhabited from August 30, 2018 until total demobilization and reclamation on September 27, 2018.

## **5.3 Local Hiring**

NCGC hired a total of 5 local workers from Rankin Inlet to take part in the 2018 GMP field season (Table 3). The total local payroll expenditure for the program was \$31,824.00 for 97 days of work.

<b>Community</b>	<b>Rankin Inlet</b>	
<b>Position</b>	<b>Days</b>	<b>\$</b>
<b>Wildlife Monitor</b>	41	13,416.00
<b>Site Services L1</b>	56	18,408.00
<b>Grand Total</b>	97	31,824.00

**Table 3: Local Community Hires by Position and Community - 2018**

Fury considers its work force of local personnel hired from the nearby communities to be an integral part of the success of its exploration. Local knowledge of the land, climate and environment brought to the team by residents of the region factor heavily into all Fury's operational decisions.

In past seasons, local employees were engaged in a number of capacities including camp support managers and assistants, carpenters, wildlife monitors and kitchen helpers. Fury provides both practical 'on the job' training and certificate-based training for local workers.

The company looks forward to recommencing explorations activities at GMP in 2021 and to the continued hiring and training of a local workforce.

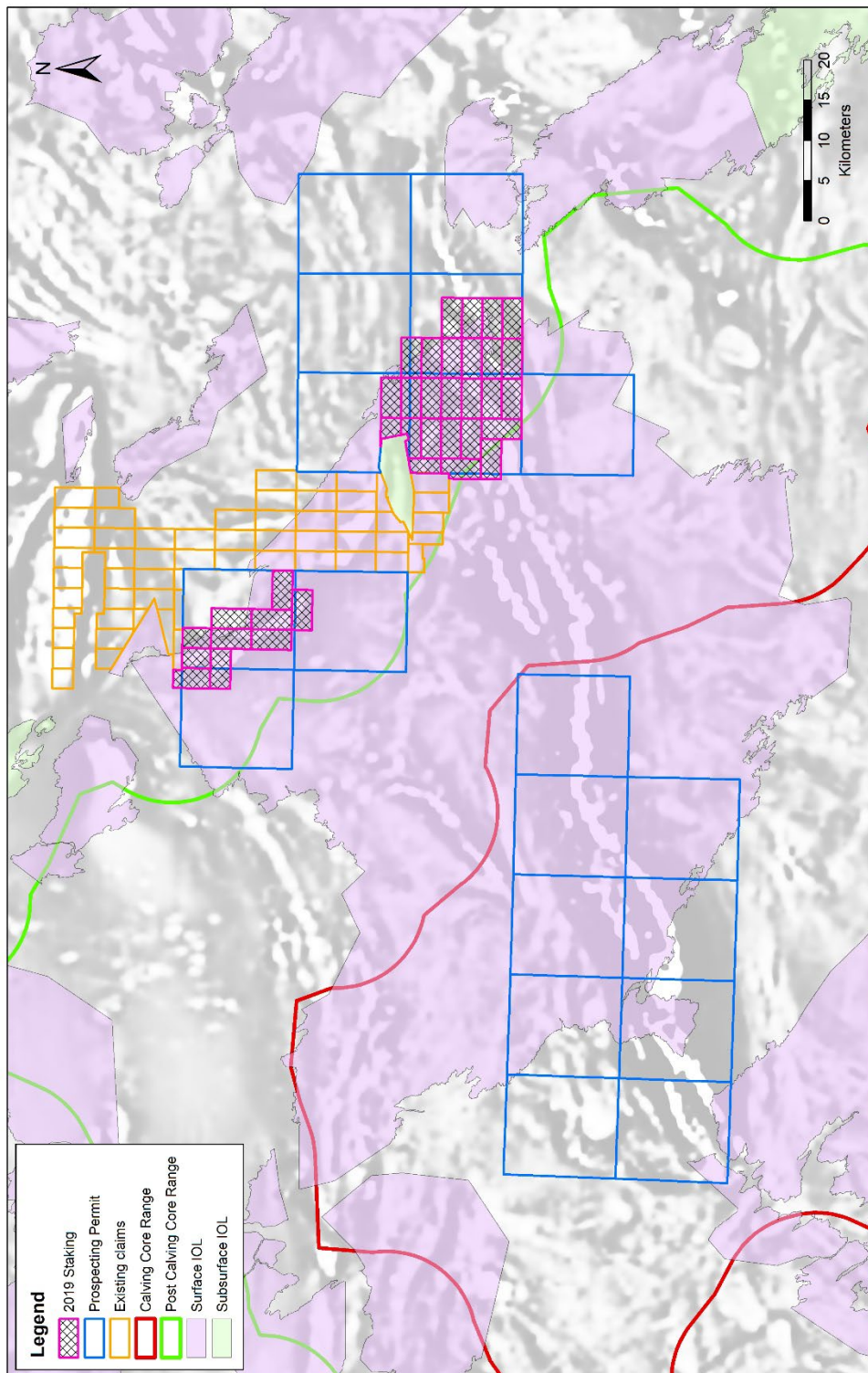
## **5.4 Consultation**

On April 23, 2018 a public meeting was held in Rankin Inlet to inform the community on the planned activities at GMP for the 2018 field season activities. Similar public meetings were held in Chesterfield Inlet on April 24, 2018 and in Baker Lake on April 25, 2018.



## 6.0 **2019 WORK ACTIVITIES**

During June 2019 a small staking program was completed at the GMP to secure prospective lands currently covered by Prospecting Permits which expire in February 2020. A total of 36 claims covering 42,640.70 hectares were staked over a two day period (Figure 10).



**Figure 9: 2019 Staking Program**

## **6.1 Expenditure**

Approximately \$80,000 was expended with northern businesses and the employment of local workers. This accounts for ~65% of the total \$123,000 in expenditures during the 2019 field season. Northern businesses involved in the 2019 program included:

- Baker Lake Lodge
- Calm Air International LP
- Exploration Tents and Arctic Camp
- Kitikmeot Helicopters
- Kitikmeot BBE Expediting Ltd
- Ookpik Aviation Inc.
- SK Construction Ltd
- Summit Air Ltd.

## **7.0 2020, 2021 and 2022 WORK ACTIVITIES**

No work was carried out on the GMP during 2020, 2021 and 2022.

## **8.0 LAND USE INSPECTIONS**

CIRNAC completed an inspection of the GMP 2018 camp and airstrip on August 6<sup>th</sup>, 2019. The only concerns noted were a small tarp and pylons left at the strip. These concerns have been addressed with the tarp and pylons being picked up. No subsequent inspections have been completed.

## **9.0 WATER**

### **9.1 Water Use**

A grand total of 33.1 cubic metres of domestic water was used during the 2018 field season. The water usage during the 2018 field season was for camp and kitchen use at the GMB Camp. No water usage occurred during the 2017 or 2019 field programs.

### **9.2 Water Sampling**

A water sample was taken from the nearby lake used for pumping from during the 2018 program for the GMB Camp. Results were provided in the 2018 GMP Annual Report.

## 10.0 **WILDLIFE**

NCGC recognizes that the GMP is located within a diverse ecosystem with abundant flora and fauna. As part of our efforts to mitigate any impact on the local wildlife populations NCGC has a wildlife reporting system in place.

<b>Species</b>	<b>Recorded sightings</b>
Wolverine	2 Large, 3 Small
Wolf	1
Arctic Fox	2
Cariboo	1
Muskox	2 herds
Grizzly Bear	1

**Table 4: Wildlife sightings - 2017**

Two personnel were employed from Rankin Inlet as Wildlife Monitors and their observations are summarized in Table 5 by species sighted for the Summer/Fall 2018 field season.

<b>Species</b>	<b>Recorded sightings</b>
Red Fox	2
Fox	4
Wolf	12
Bald Eagle	2
Cariboo	54
Muskox	>190
Geese	Several flocks
Ptarmigan	15
Sik-sik	1

**Table 5: Wildlife sightings - 2018**

During the 2019 claim staking program wildlife sightings were noted and recorded as presented in Table 6.

<b>X</b>	<b>Y</b>	<b>Date</b>	<b>Time</b>	<b>Animal</b>	<b>Adults</b>	<b>Young</b>	<b>Total</b>	<b>Activity</b>
439120	7080300	6/27/2019	12:15	Caribou	2	1	<b>3</b>	walking NE
442675	7069945	6/27/2019	13:45	Swans	2	0	<b>2</b>	swimming
479750	7041850	6/27/2019	17:30	Musk Ox	6	3	<b>9</b>	grazing
464085	7050840	6/28/2019	10:00	Musk Ox	9	2	<b>11</b>	grazing
484450	7045350	6/28/2019	10:40	Musk Ox	4	1	<b>5</b>	grazing
484650	7043075	6/28/2019	10:45	Swans	2	0	<b>2</b>	swimming
479750	7041850	6/28/2019	11:00	Musk Ox	20	6	<b>26</b>	grazing
462585	7053250	6/28/2019	11:30	Musk Ox	20	5	<b>25</b>	grazing
476800	7044000	6/28/2019	12:50	Caribou	5	2	<b>7</b>	walking N
474640	7051550	6/28/2019	14:00	Caribou	3	1	<b>4</b>	walking N
469800	7044830	6/28/2019	16:00	Musk Ox	8	2	<b>10</b>	grazing
478225	7048825	6/28/2019	14:30	Caribou	4	1	<b>5</b>	walking E

**Table 6: Wildlife sightings - 2019**

NCGC is committed to continue to monitor wildlife throughout the GMP in order to mitigate any and all effects on wildlife.

## **11.0 SPILLS**

No spills occurred during any of the field programs.