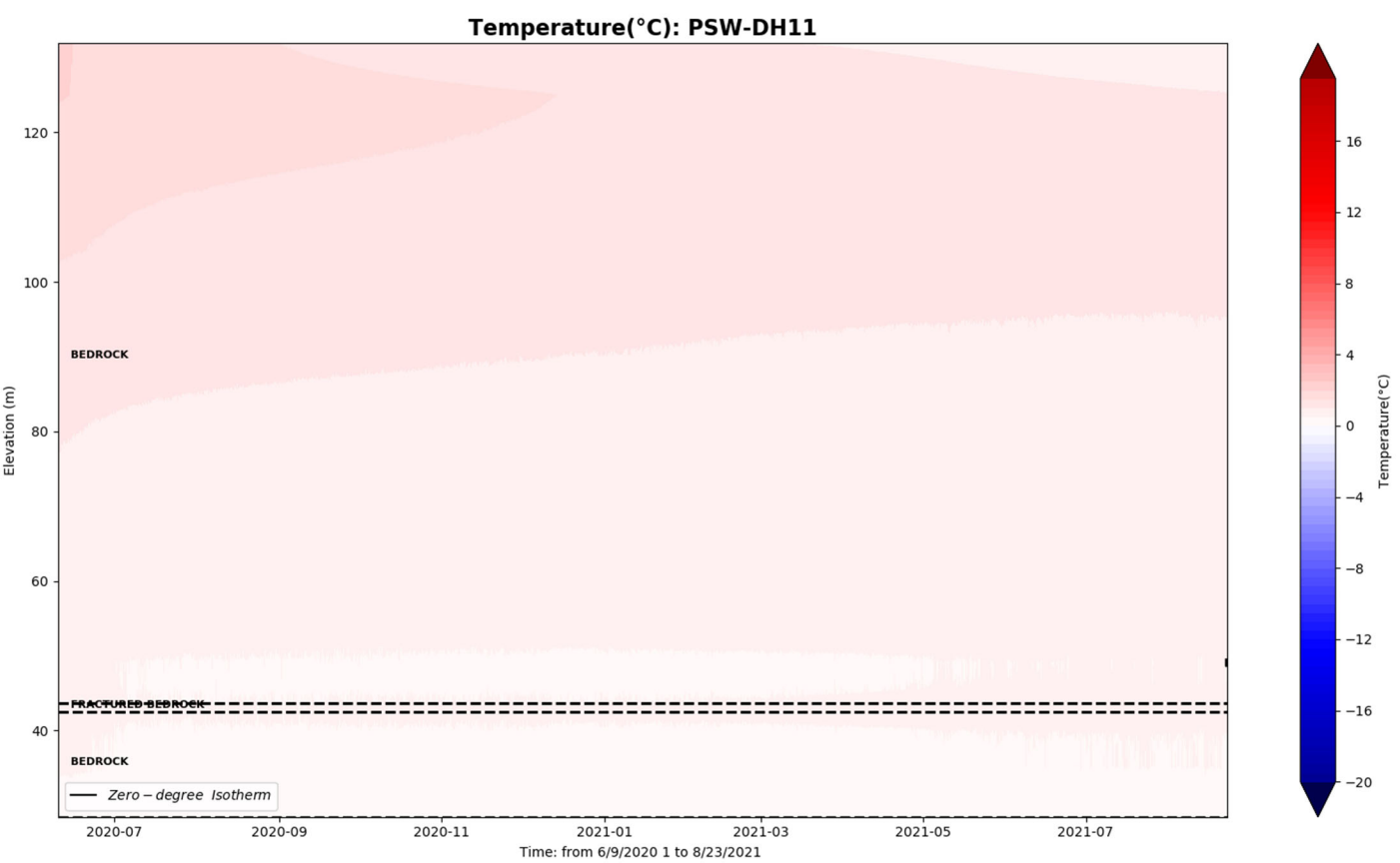
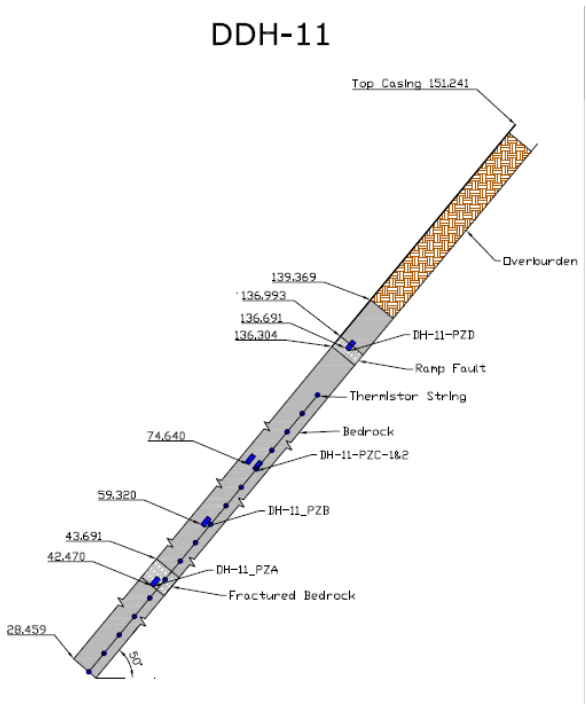
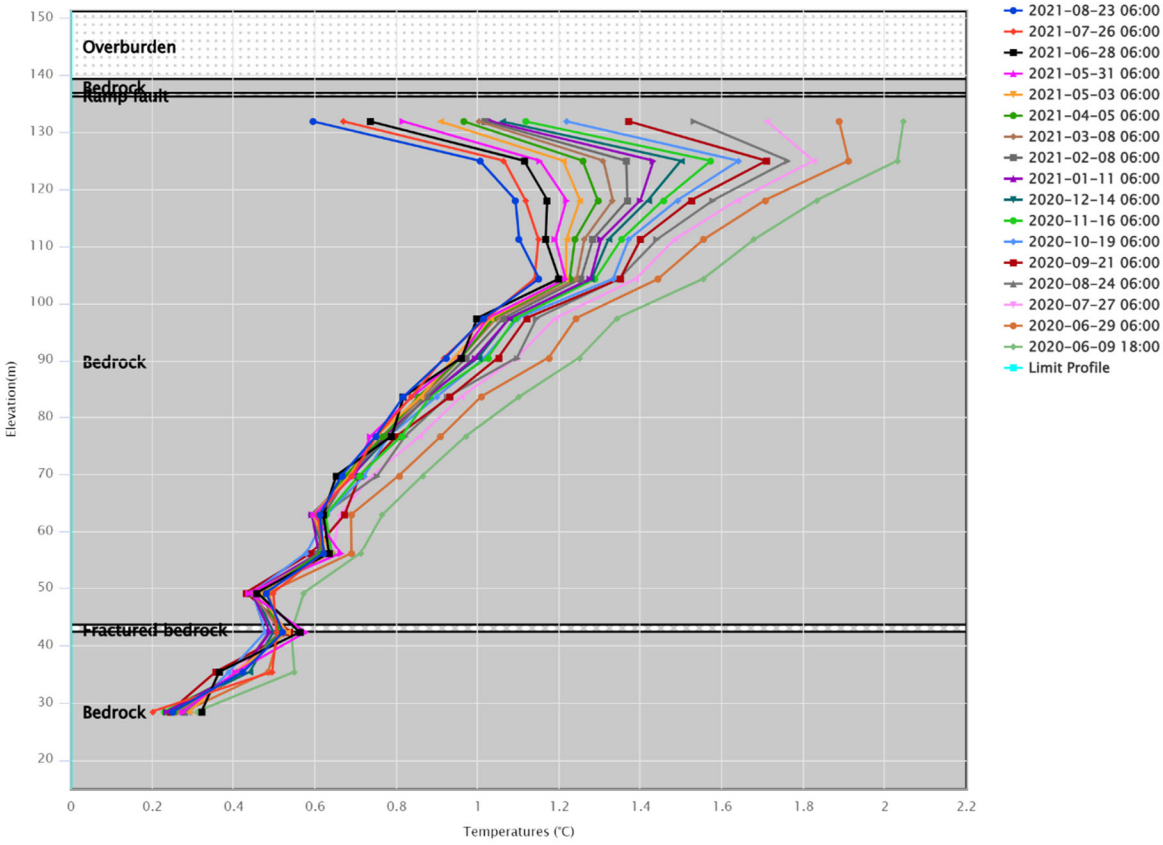


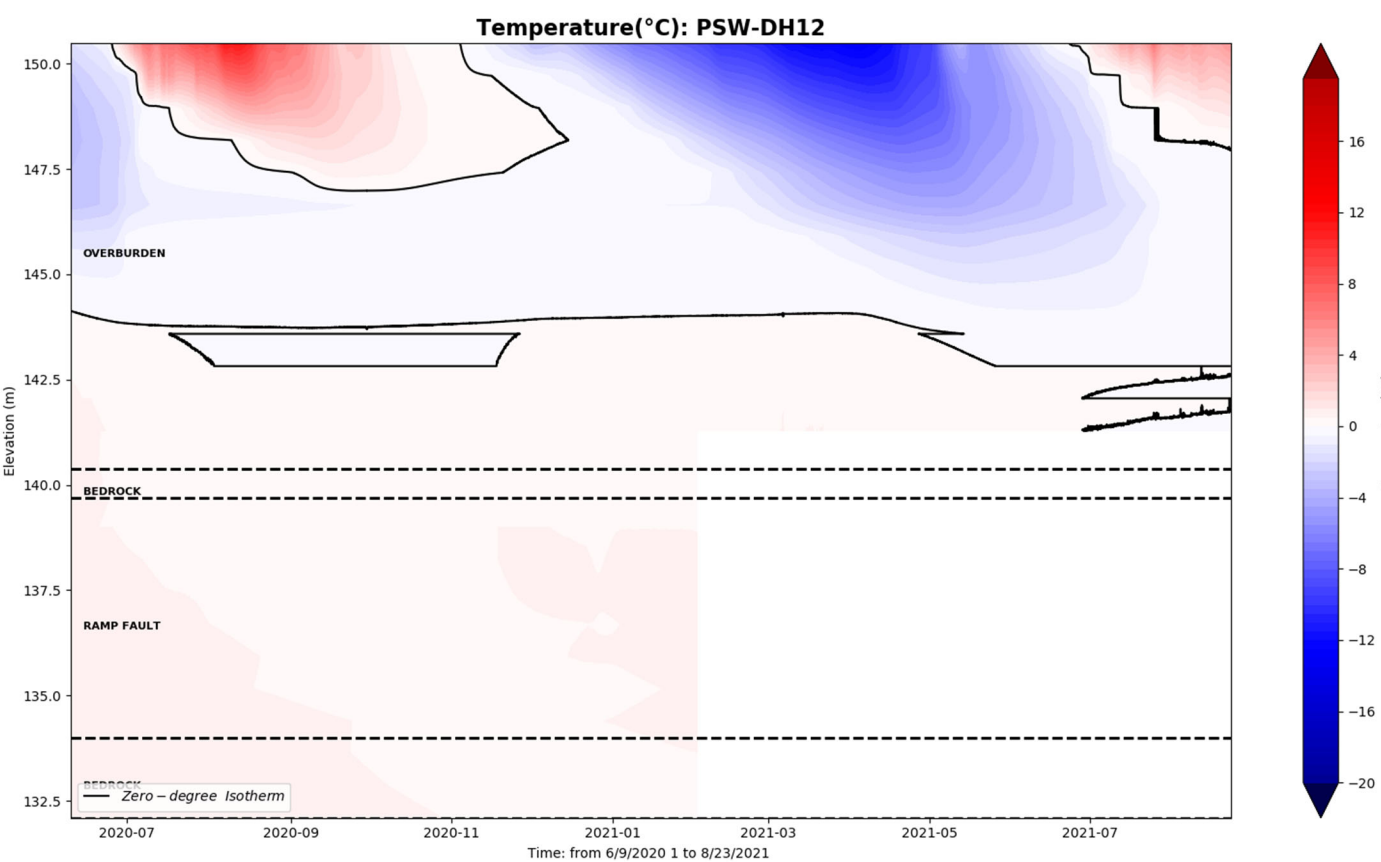
PSW – DH 11 TH



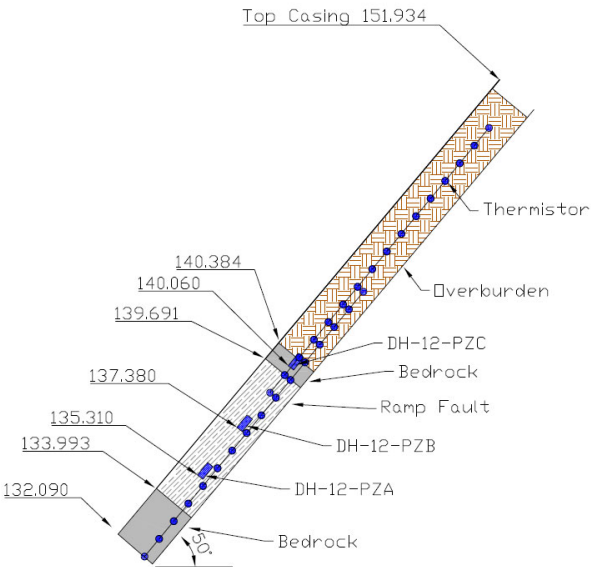
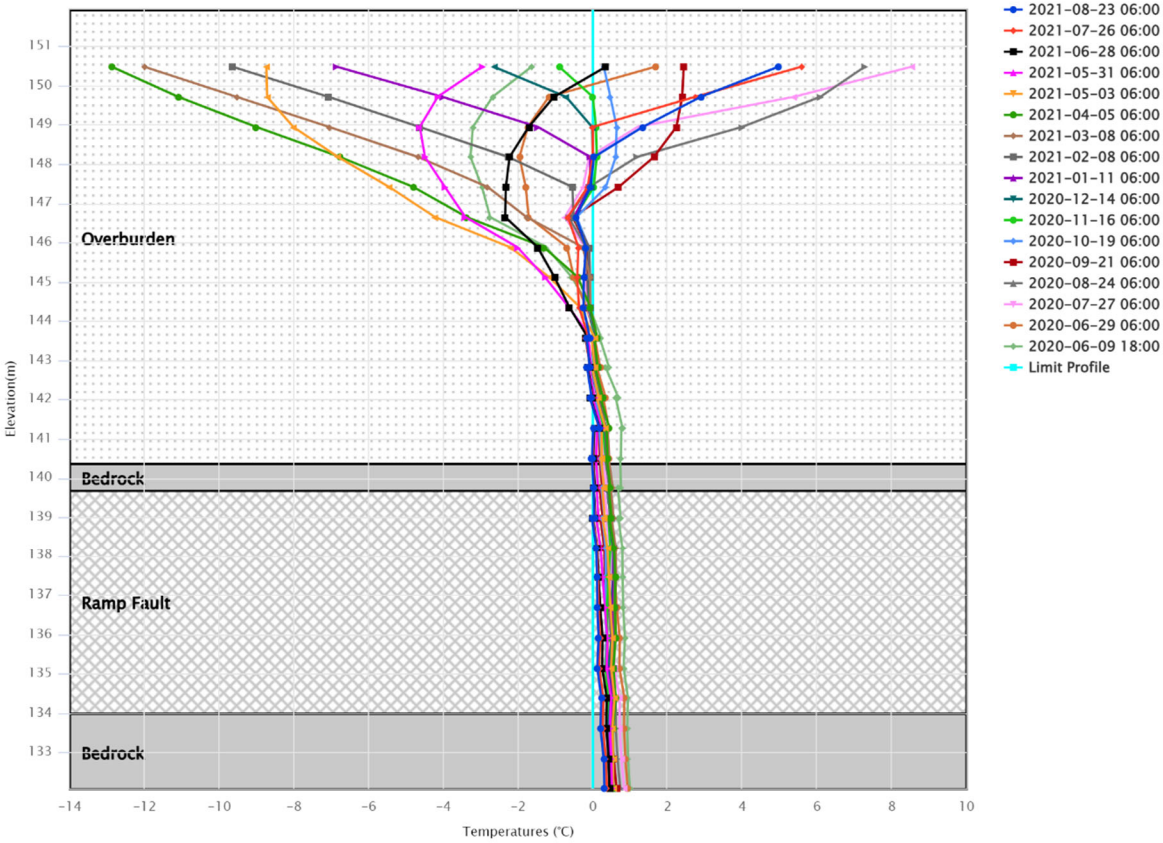
AMQ – PSW – DH11_TH



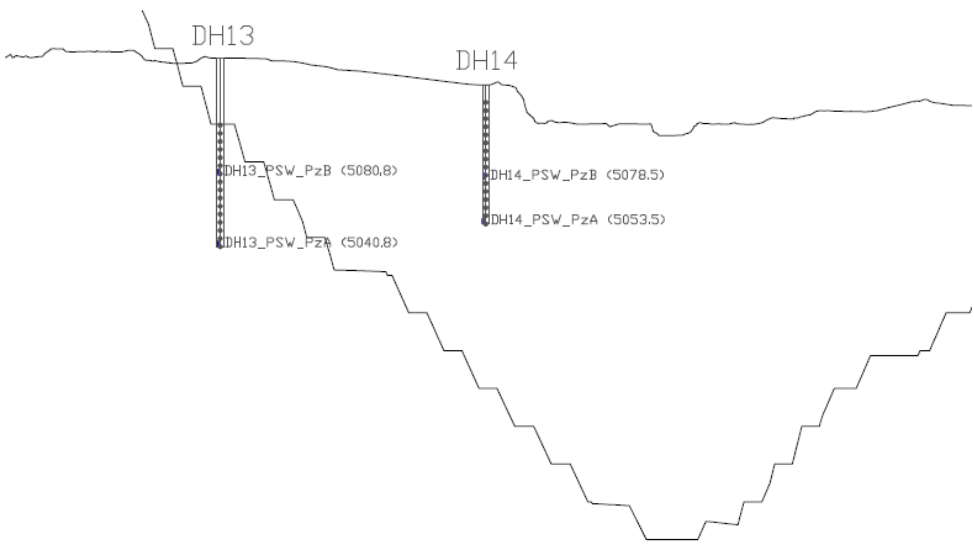
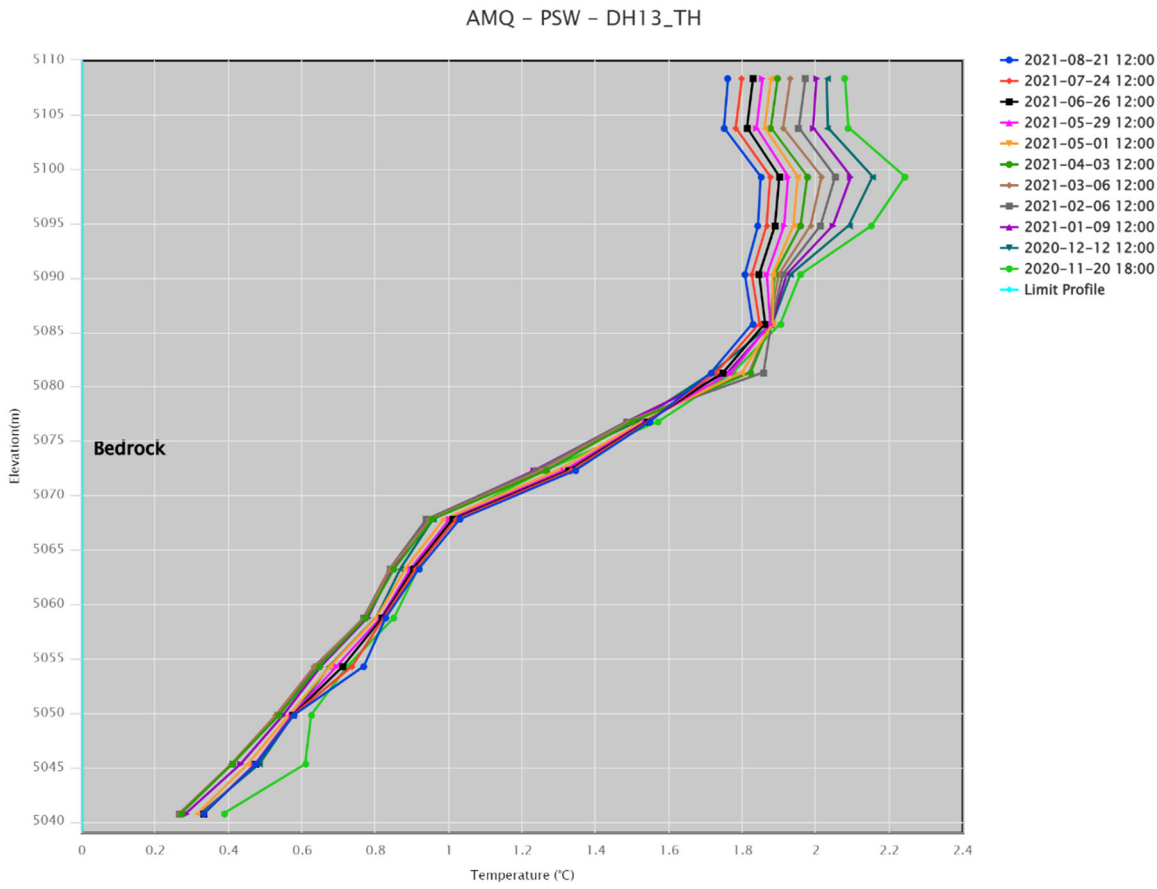
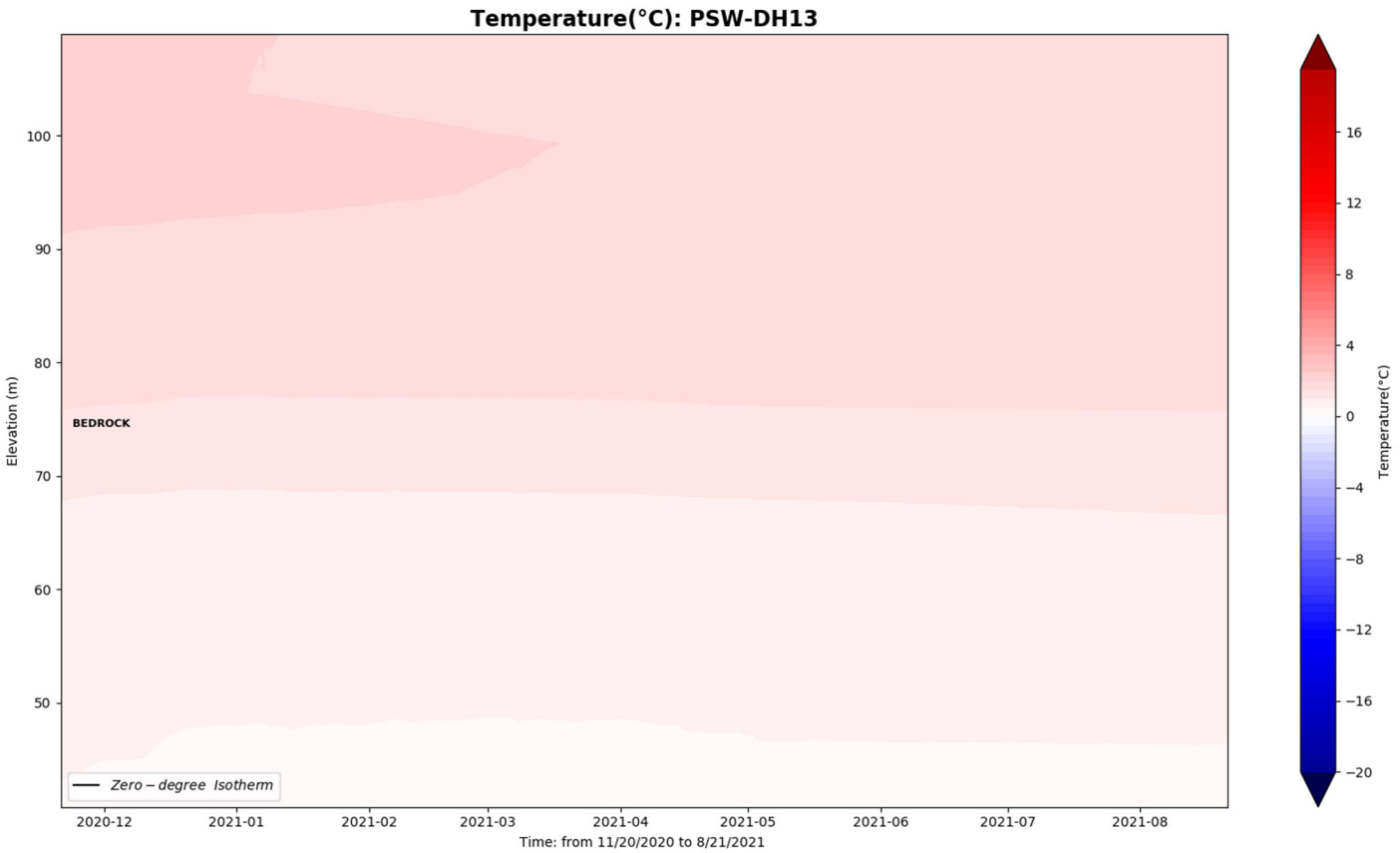
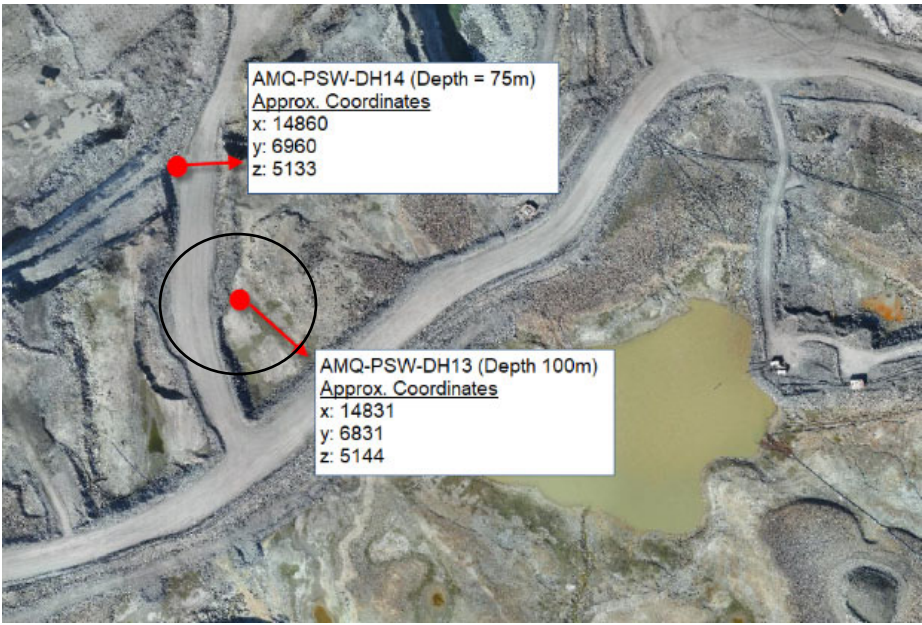
PSW – DH 12 TH



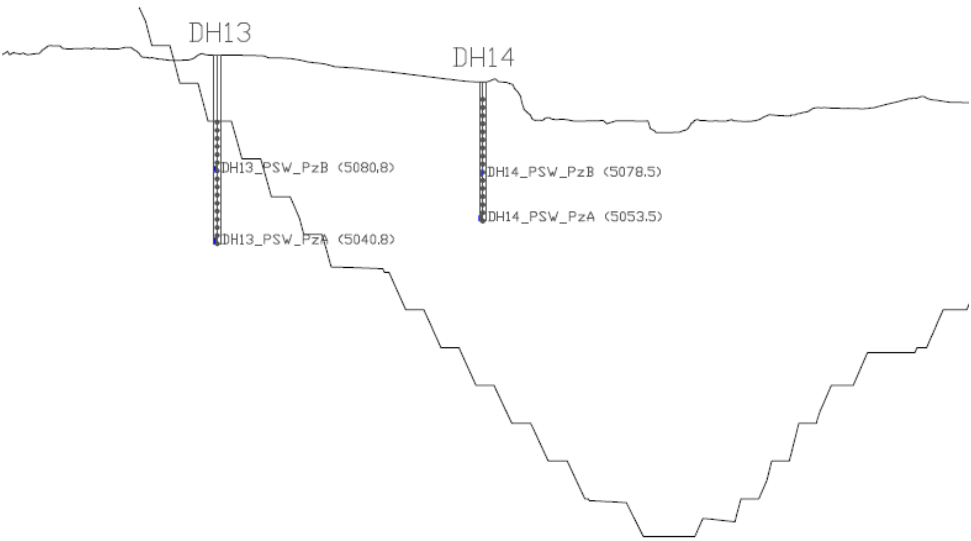
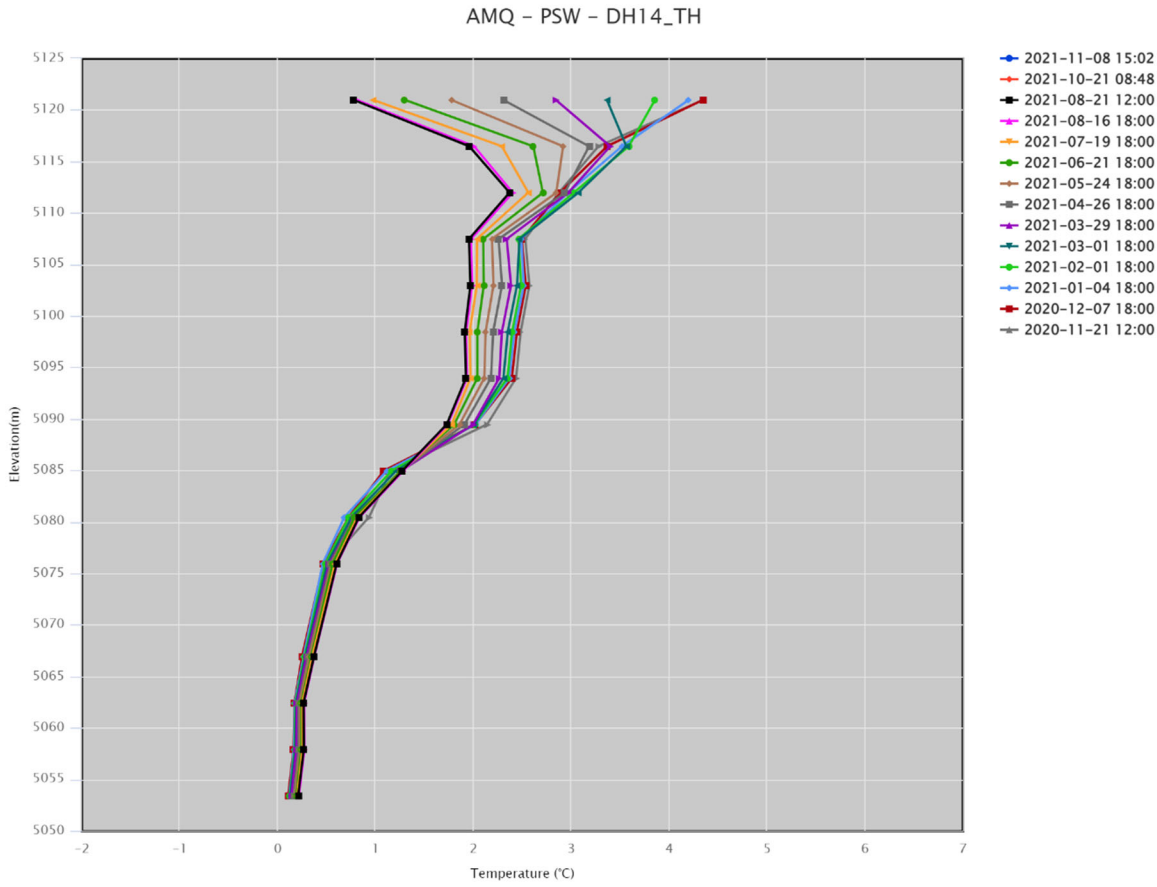
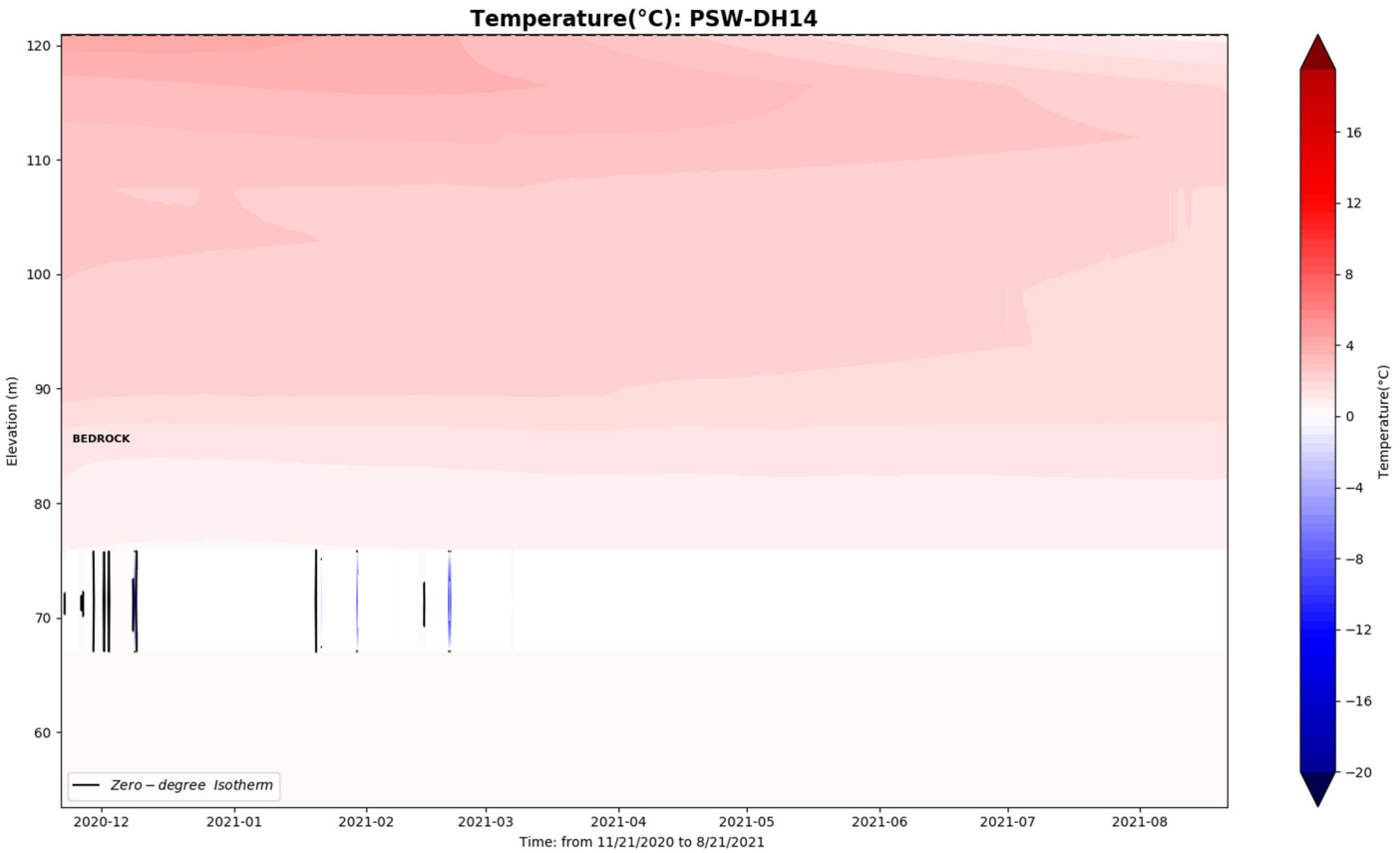
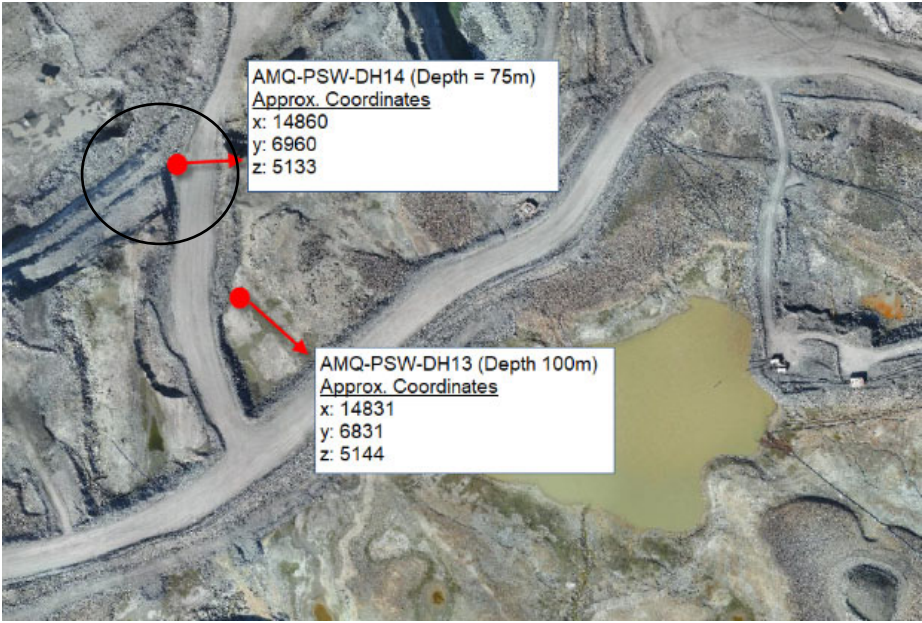
AMQ – PSW – DH12_TH



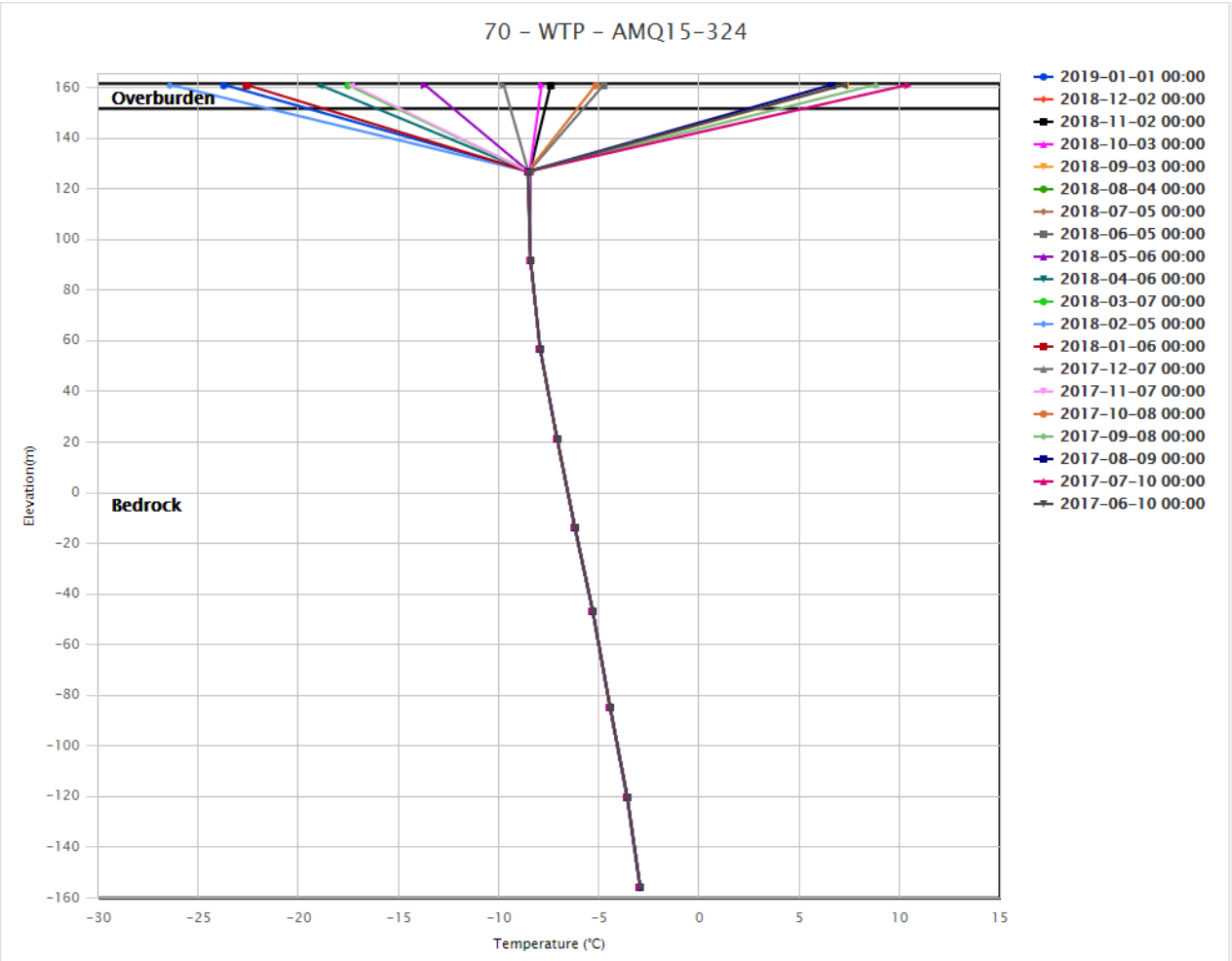
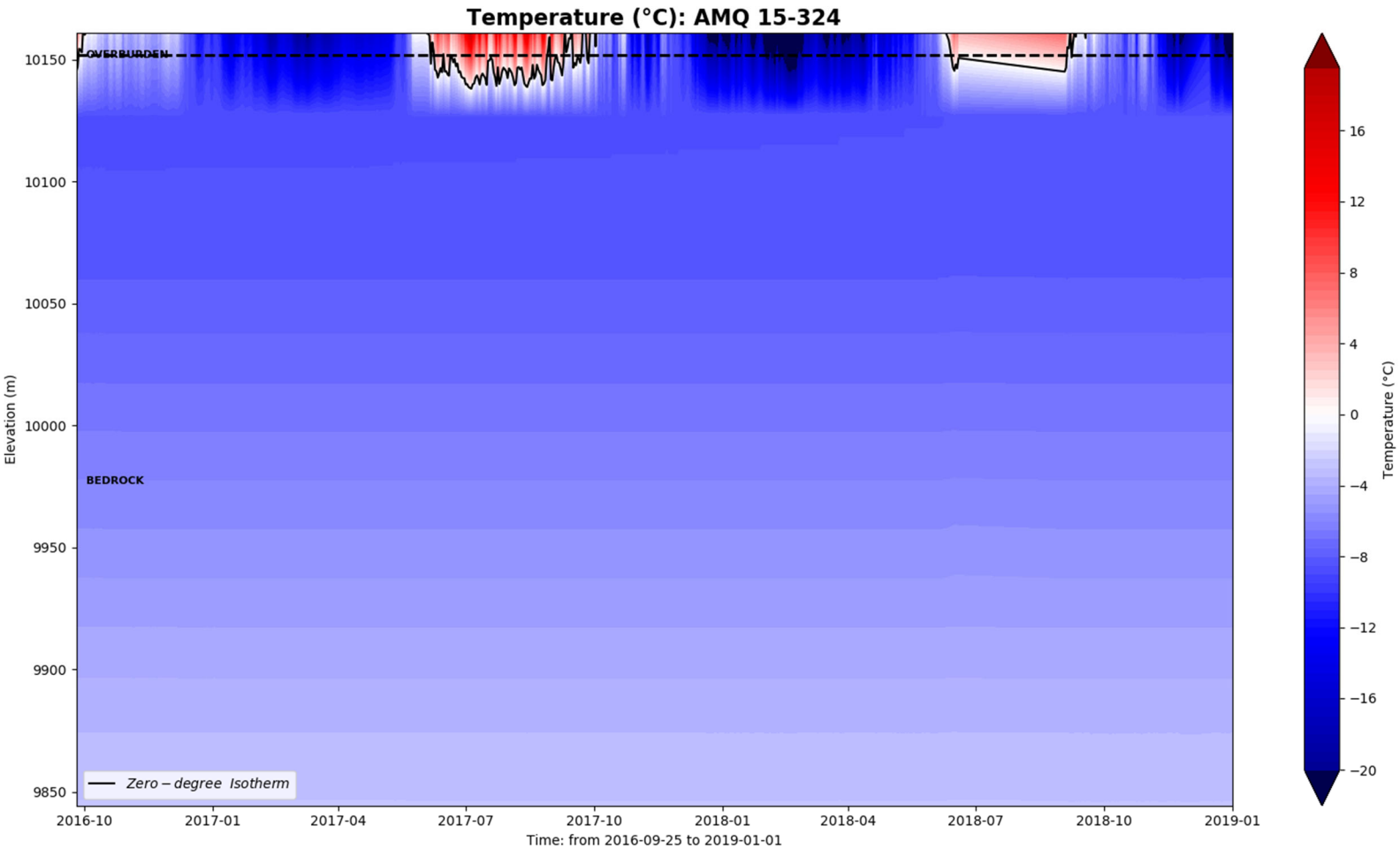
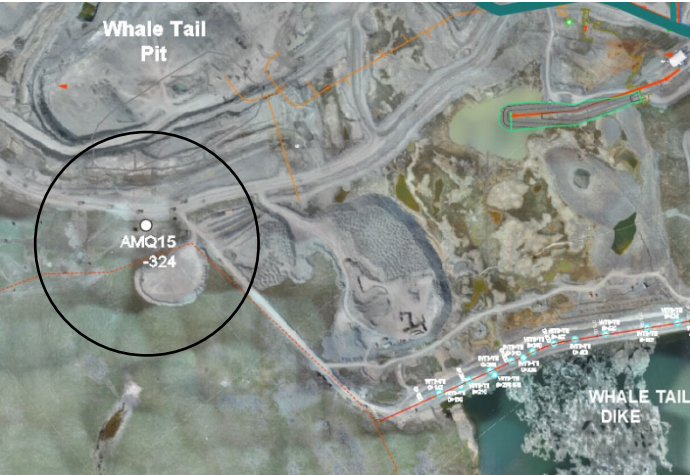
PSW – DH 13 TH



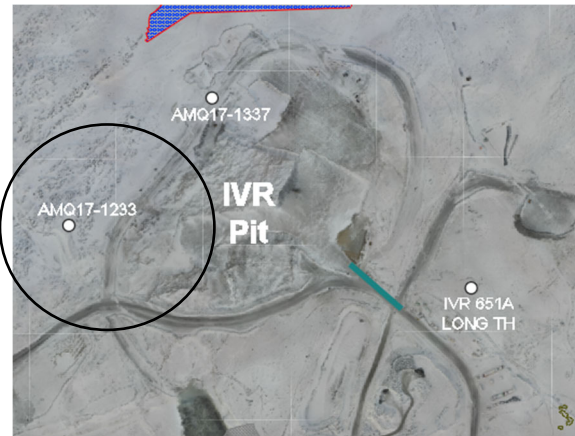
PSW – DH 14 TH



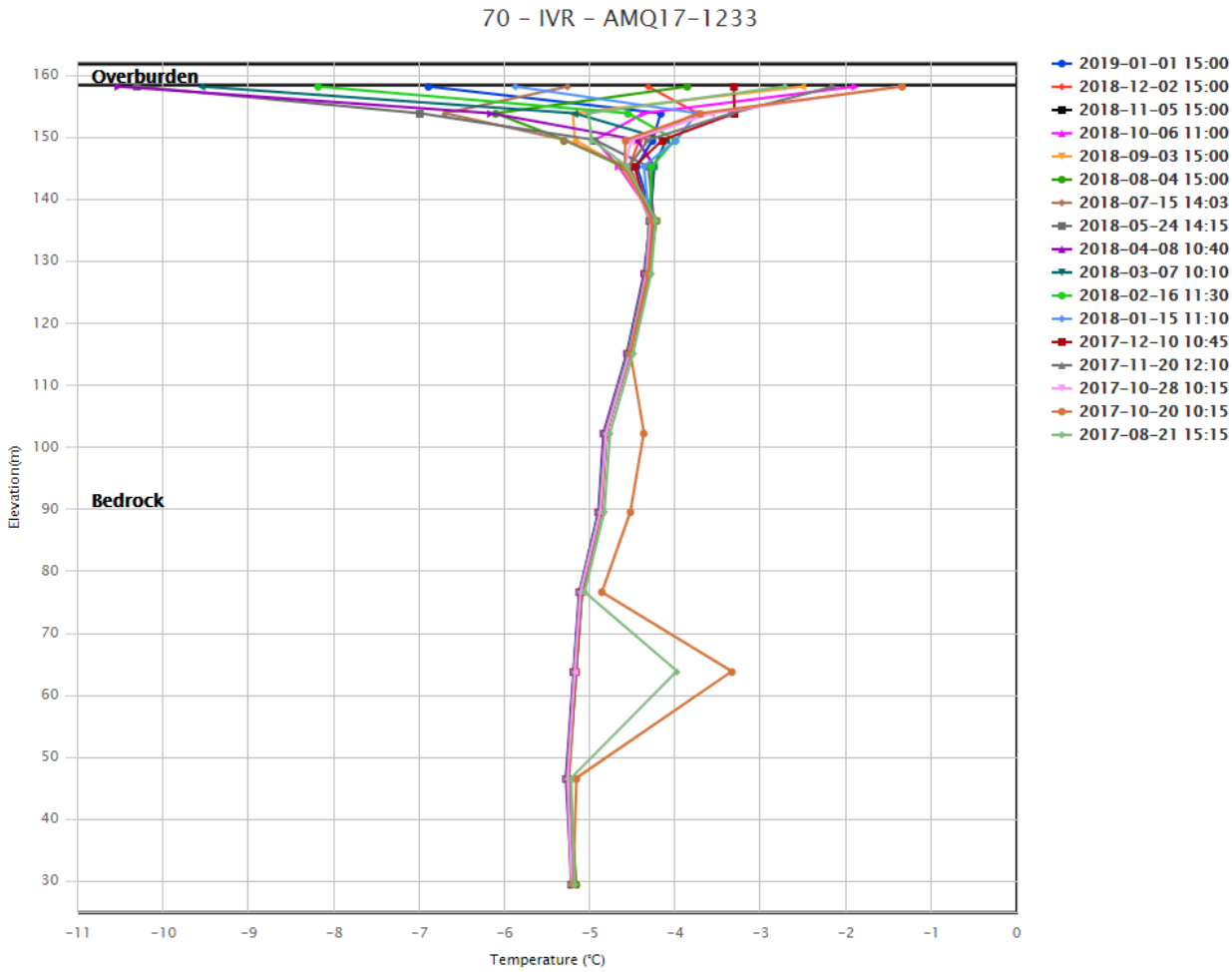
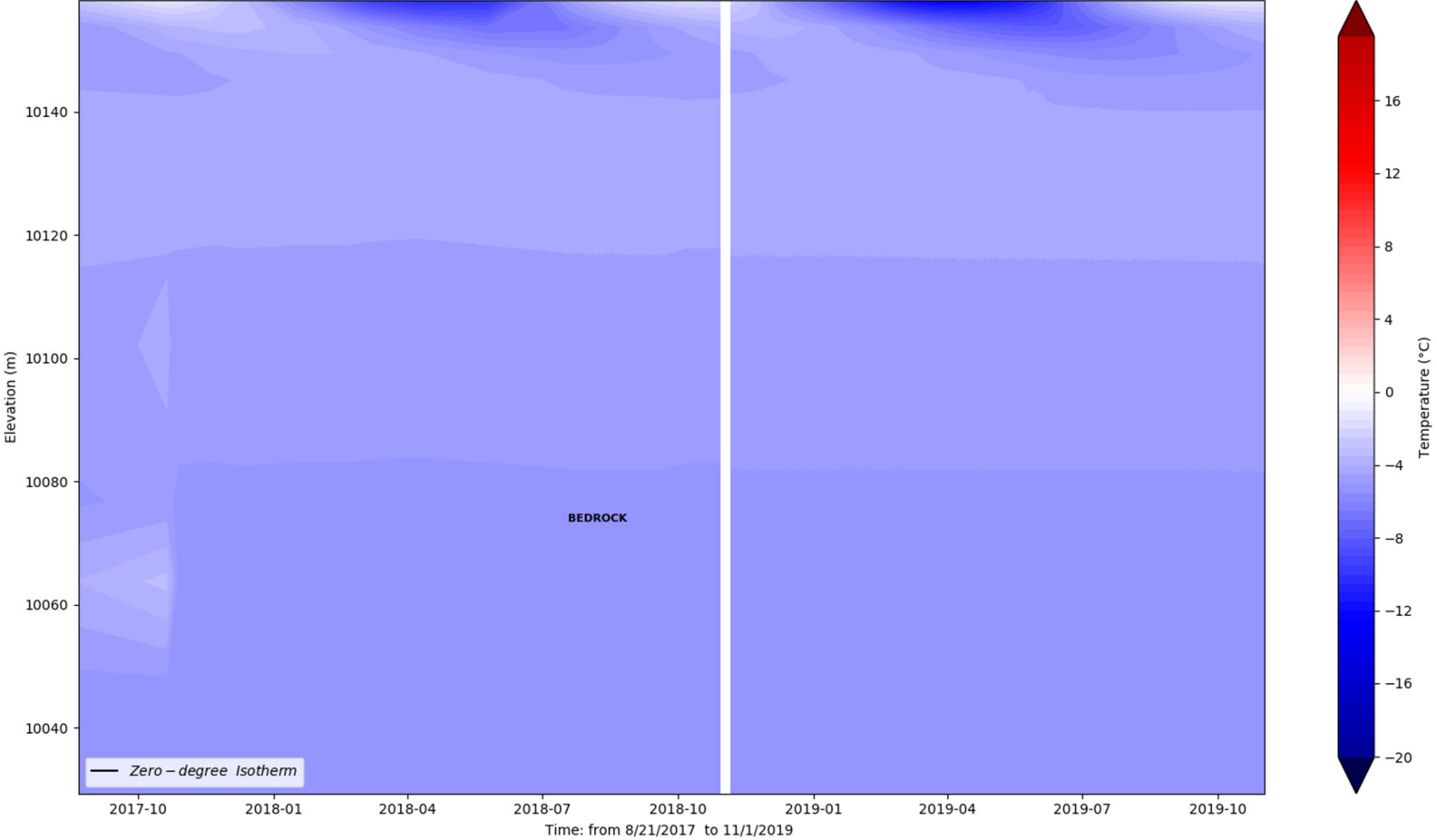
AMQ 15-324



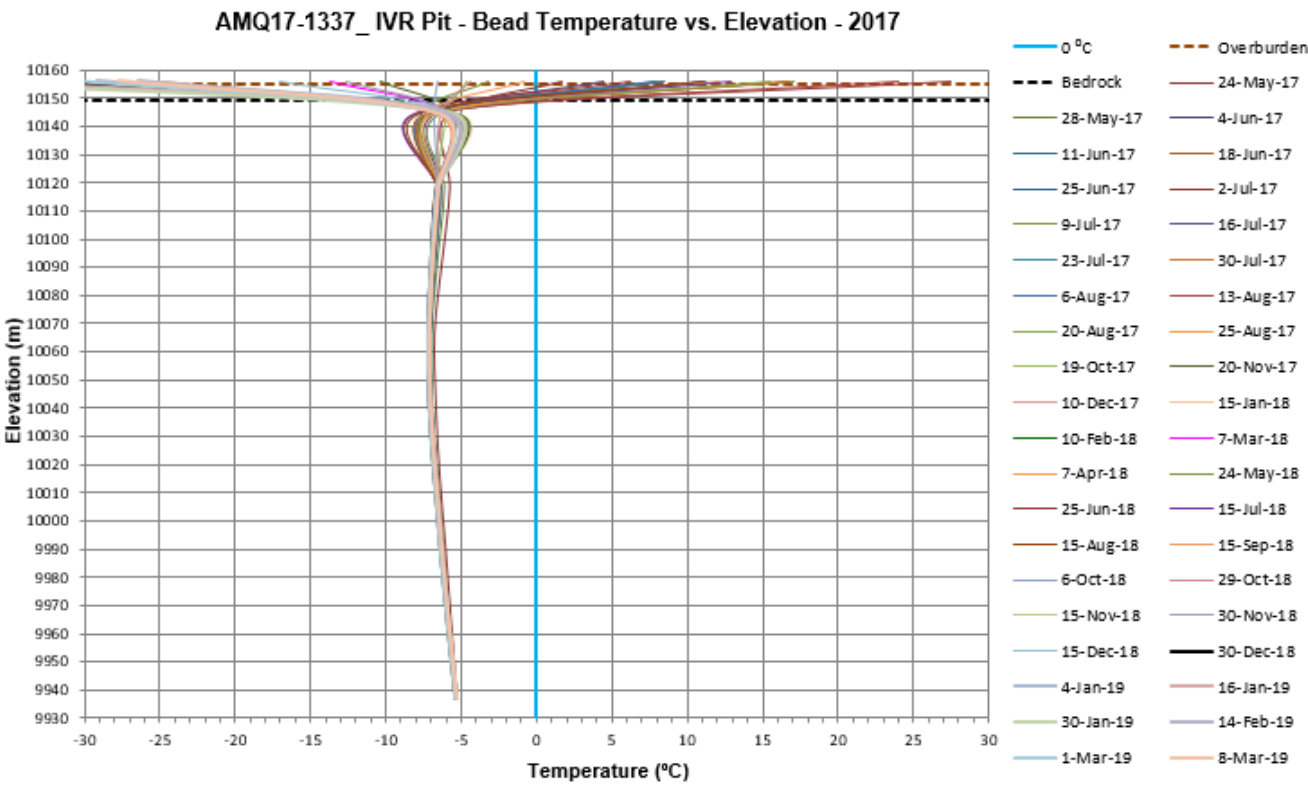
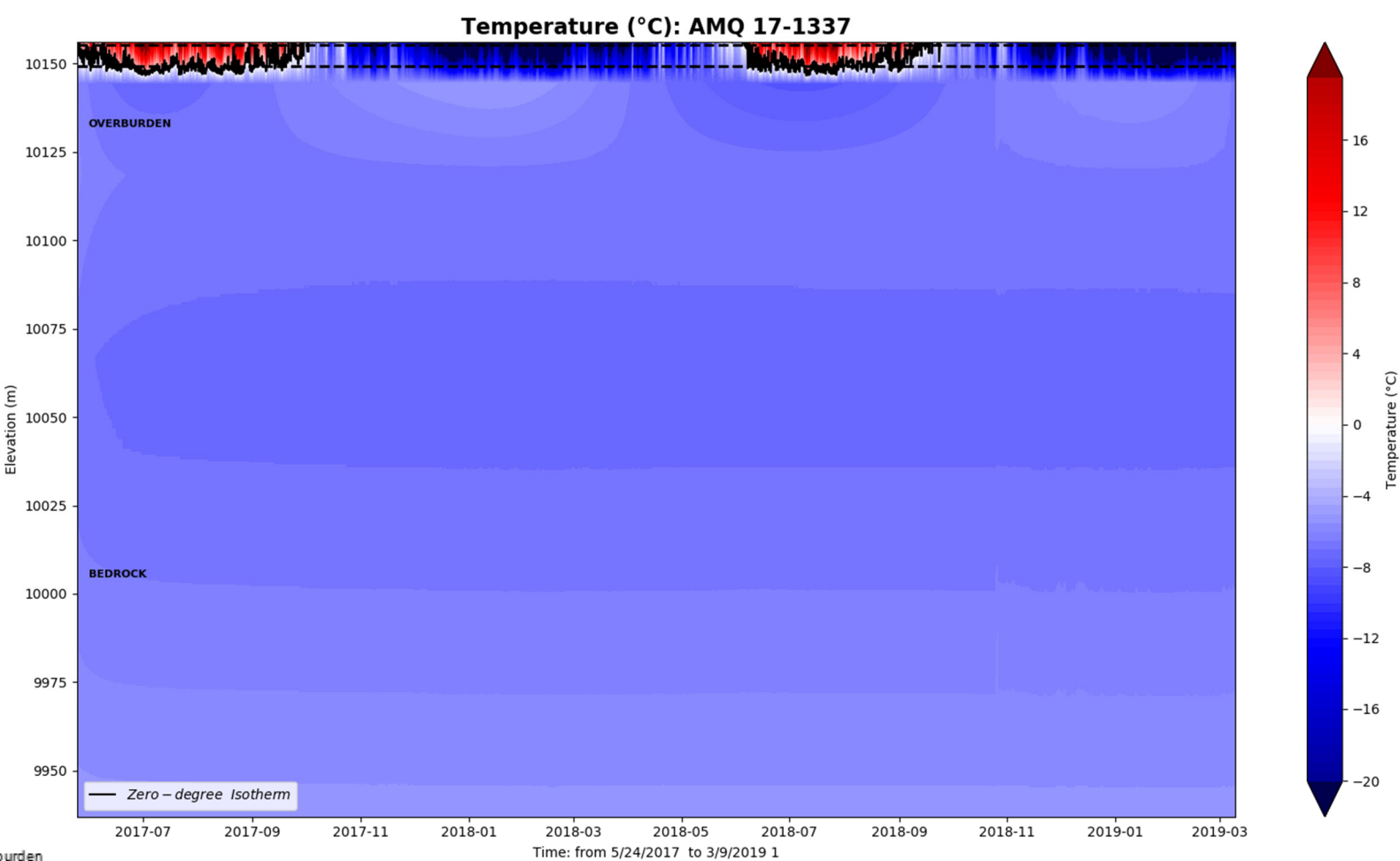
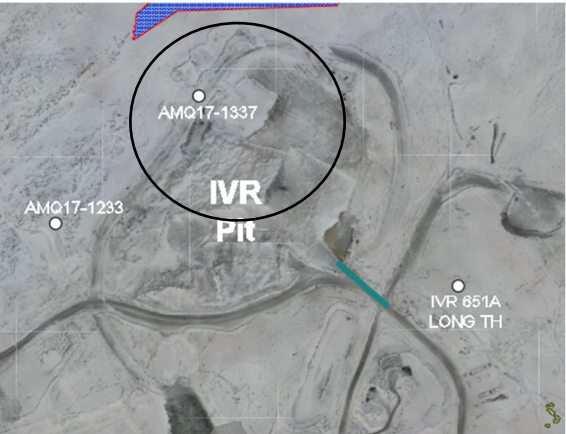
AMQ 17-1233



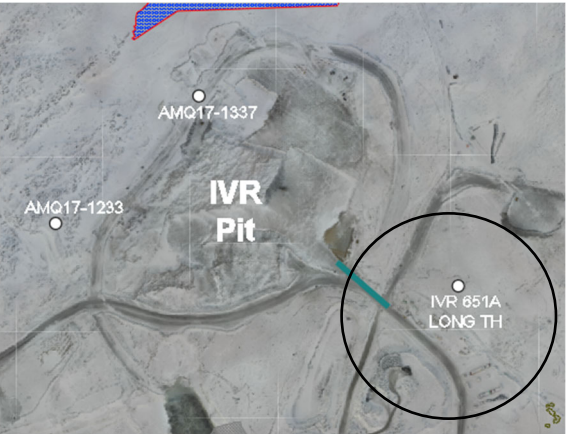
Temperature (°C): AMQ 17-1233



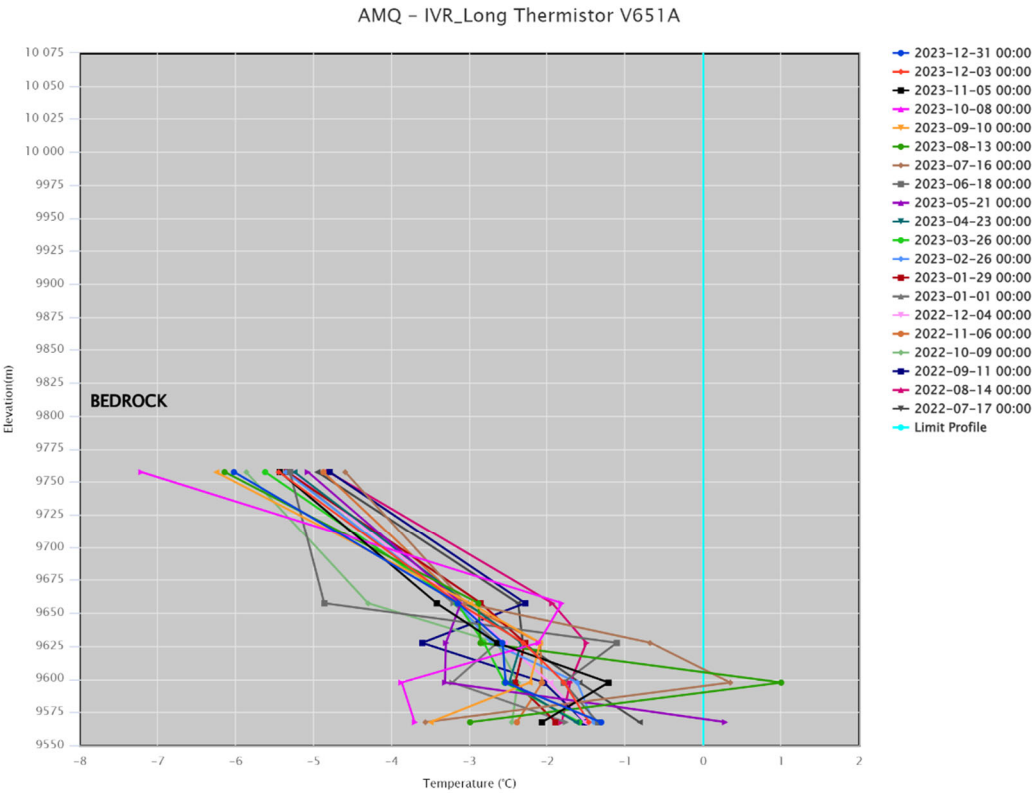
AMQ 17-1337



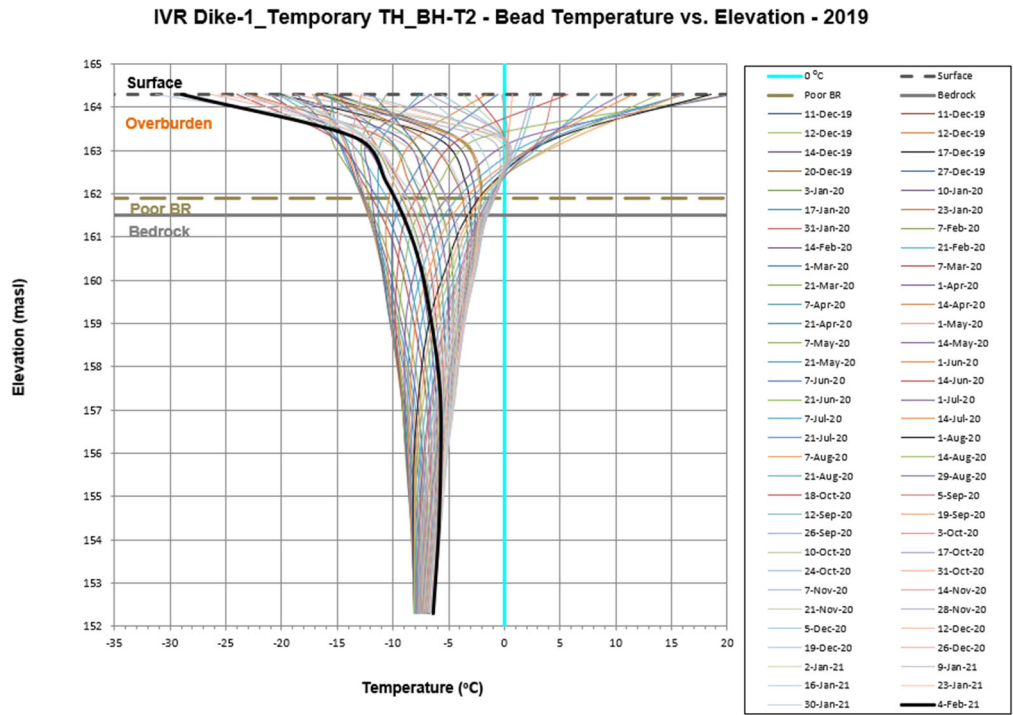
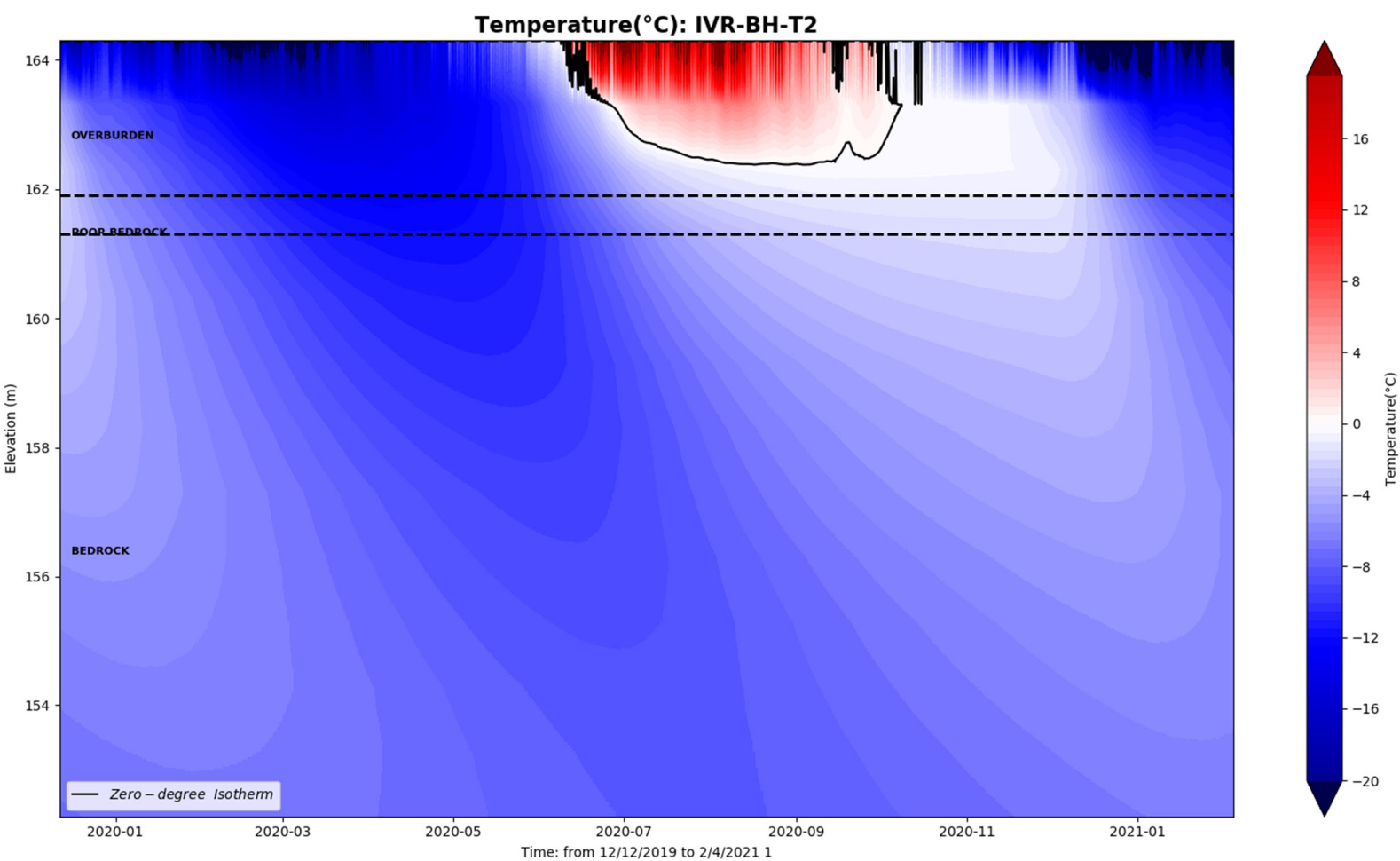
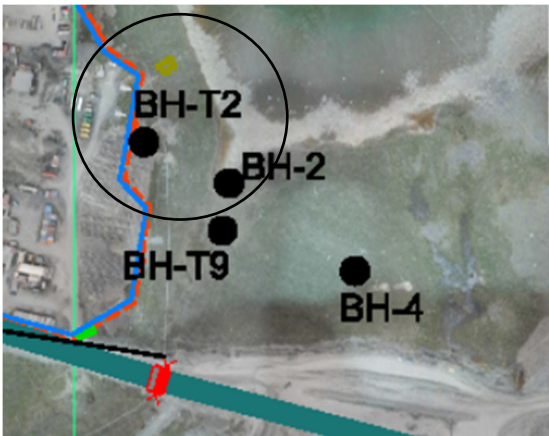
V651A Long TH



Note that readings are unstable and many beads are not functional



IVR-BH-T2



IVR-BH-4

