



NIRB Application for Screening #125443

Prince Leopold Island Migratory Bird Sactuary Permit & Nirjutiqarvik NWA wildlife viewing permit

Application Type: New

Project Type: Tourism

Application Date: 1/29/2019 5:24:34 PM

Period of operation: from 0001-01-01 to 0001-01-01

Proposed Authorization: from 0001-01-01 to 0001-01-01

Project Proponent: Nansen Weber
Canadian Arctic Holidays Ltd.
PO 1252 STN MAIN
Yellowknife NWT X1A 2n9
Canada
Phone Number:: 2503084656, Fax Number::

DETAILS

Non-technical project proposal description

- English: We would like to fly and land a Twin-Otter to both Prince Leopold Island and Coburg Island. We will be using the airstrips that are already designated on the islands and then walk to the cliffs and waters edge. No vessel, all-terrain vehicles or helicopters will be used in either location. Proposed dates for visiting both locations are August 2-4, 2019 weather permitting. This is a one-day visit, with an approximate 3-4 hour viewing at each location.
- French: Nous aimerions voler et atterrir une Twin Otter à la fois sur l'île Prince Léopold et l'île Coburg. Nous utiliserons les pistes d'atterrissage déjà désignées sur les îles, puis marcherons jusqu'à la falaise et au bord de l'eau. Aucun navire, véhicule tout terrain ou hélicoptère ne sera utilisé à aucun endroit. Les dates proposées pour visiter les deux sites sont les suivantes: du 2 au 4 août, 2019, si le temps le permet. Il s'agit d'une visite d'une journée, avec un visionnage d'environ 3 à 4 heures à chaque endroit.
- Inuktitut: I am waiting on a translated document of our project proposal by resolute local Susan Salluviniq.
- Inuinnaqtun: I do not know anyone who can translate a document into Inuinnaqtun. Our designated locations are for North Baffin.

Personnel

Personnel on site: 12

Days on site: 1

Total Person days: 12

Operations Phase: from 2019-07-28 to 2019-07-30

Activities

Location	Activity Type	Land Status	Site history	Site archaeological or paleontological value	Proximity to the nearest communities and any protected areas
Prince Leopold Island	Tourism Activities	Crown	National Migratory Bird Sanctuary	We are not interested in any archaeological sites	Resolute Bay
Coburg Island	Tourism Activities	Crown	National Wildlife Protected Area	We are not interested in any archaeological sites. We are visiting to see wildlife only.	Grise Fiord

Community Involvement & Regional Benefits

Community	Name	Organization	Date Contacted
Information is not available			

Authorizations

Indicate the areas in which the project is located:

North Baffin

Authorizations

Regulatory Authority	Authorization Description	Current Status	Date Issued / Applied	Expiry Date
Canadian Wildlife Service	Permit application being processed, waiting on a Inuktitut translated document from Resolute bay local Susan Salluviniq.	Active		

Project transportation types

Transportation Type	Proposed Use	Length of Use
Air	Twin-Otter	

Project accomodation types

Other,

Material Use

Equipment to be used (including drills, pumps, aircraft, vehicles, etc)

Equipment Type	Quantity	Size - Dimensions	Proposed Use
Summit Air Twin-Otter	1	N/A	Fly from Arctic Watch ,Somerset Island to Prince Leopold Island and return to Arctic Watch the same day.
Summit Air Twin-Otter	1	N/A	Fly from Arctic Watch to Resolute Bay then to Coburg Island and return to Arctic Watch the same day.

Detail Fuel and Hazardous Material Use

Detail fuel material use:	Fuel Type	Number of containers	Container Capacity	Total Amount	Units	Proposed Use
Aviation fuel	fuel	0	0	0	Cubic ft	Plane will be fuel at Arctic Watch and or Resolute Bay. No fueling at the desired visiting locations
No Hazardous materials are part of our activities	hazardous	0	0	0	Cubic ft	N/A

Water Consumption

Daily amount (m3)	Proposed water retrieval methods	Proposed water retrieval location
0		

Waste

Waste Management

Project Activity	Type of Waste	Projected Amount Generated	Method of Disposal	Additional treatment procedures
Environmental monitoring site	Sewage (human waste)	0	Guests will be expected to have restroom needs before departure to the island at Arctic Watch Lodge. If a guest or guide does need to have an emergency restroom break, all personal garbage or waste will be carried off the island in a garbage bag by guests themselves or the guides.	N/A

Environmental Impacts:

Canadian Arctic Holidays is a tourist company. Guests travel from around the world to visit Arctic Watch wilderness lodge and Arctic Haven Wilderness lodge. All our tours and activities offered through are our operations are largely based on wildlife viewing. We aim to preserve and care for the species and environment at all times above all. In doing so we wish to show guest from around the world the beauty Nunavut has to offer. We do not think visiting Prince Leopold Island and Coburg will have any environmental impacts. We will not do any flybys over nesting cliffs or shores at either location, all viewing will be done by foot. We always convey the message to our guest to keep a reasonable distance from birds and wildlife in order not to scare or disturb off any wildlife. We will be using already designated landing strips and there for not disturbing the tundra. Archaeological sites are not of interest and will be left alone.

Additional Information

SECTION A1: Project Info

SECTION A2: Allweather Road

SECTION A3: Winter Road

SECTION B1: Project Info

SECTION B2: Exploration Activity

SECTION B3: Geosciences

SECTION B4: Drilling

SECTION B5: Stripping

SECTION B6: Underground Activity

SECTION B7: Waste Rock

SECTION B8: Stockpiles

SECTION B9: Mine Development

SECTION B10: Geology

SECTION B11: Mine

SECTION B12: Mill

SECTION C1: Pits

SECTION D1: Facility

SECTION D2: Facility Construction

SECTION D3: Facility Operation

SECTION D4: Vessel Use

SECTION E1: Offshore Survey

SECTION E2: Nearshore Survey

SECTION E3: Vessel Use

SECTION F1: Site Cleanup

SECTION G1: Well Authorization

SECTION G2: Onland Exploration

SECTION G3: Offshore Exploration

SECTION G4: Rig

SECTION H1: Vessel Use

SECTION H2: Disposal At Sea

SECTION I1: Municipal Development

Description of Existing Environment: Physical Environment

Description of Existing Environment: Biological Environment

Description of Existing Environment: Socio-economic Environment

Miscellaneous Project Information

Identification of Impacts and Proposed Mitigation Measures

Cumulative Effects

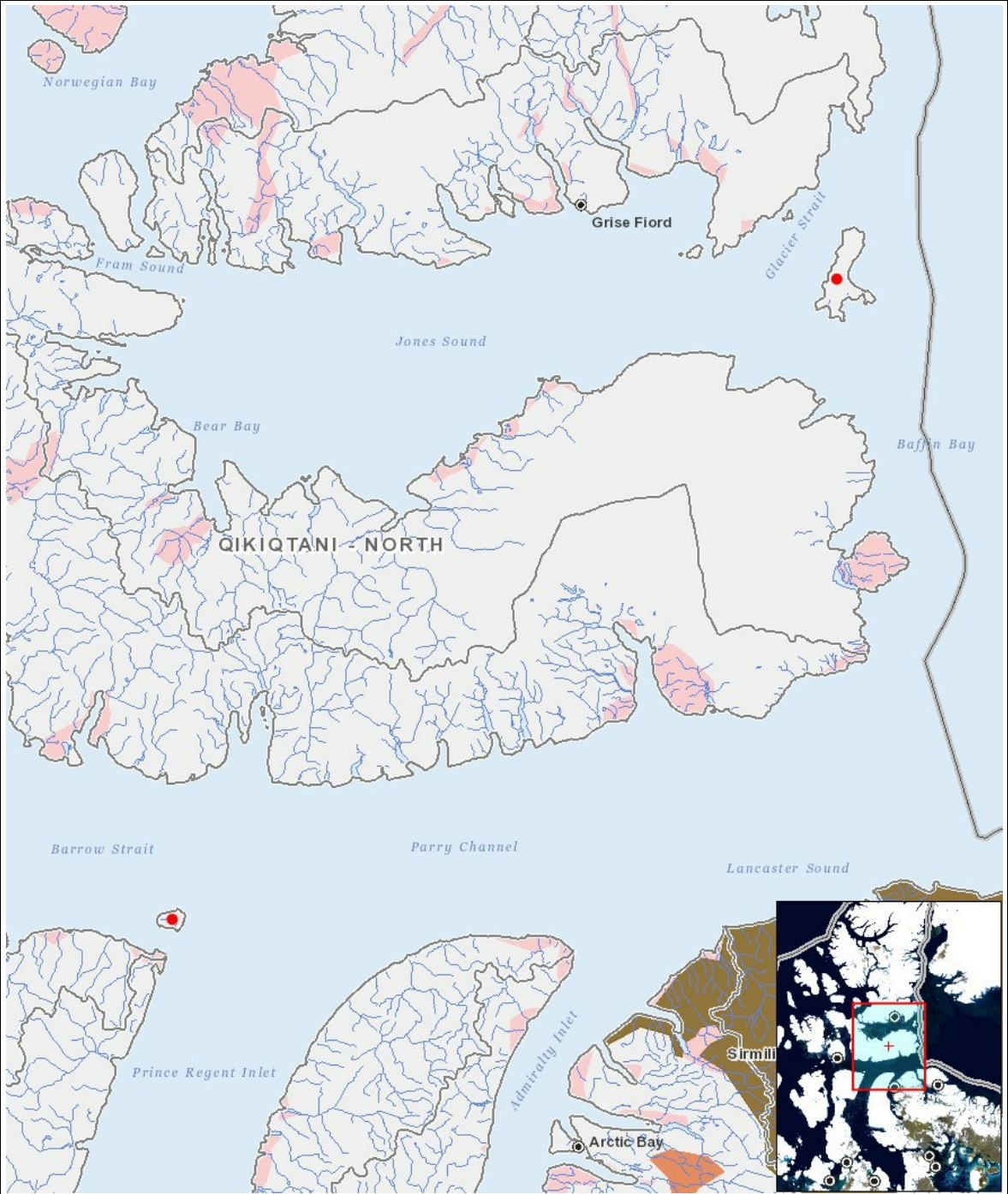
Impacts

Identification of Environmental Impacts

		PHYSICAL	Designated environmental areas	Ground stability	Permafrost	Hydrology / Limnology	Water quality	Climate conditions	Eskers and other unique or fragile landscapes	Surface and bedrock geology	Sediment and soil quality	Tidal processes and bathymetry	Air quality	Noise levels	BIOLOGICAL	Vegetation	Wildlife, including habitat and migration patterns	Birds, including habitat and migration patterns	Aquatic species, incl. habitat and migration/spawning	Wildlife protected areas	SOCIO-ECONOMIC	Archaeological and cultural historic sites	Employment	Community wellness	Community infrastructure	Human health
Construction																										
-		-	-	-	-	-	-	-	-	-	-	-	-	-	-	-	-	-	-	-	-	-	-	-	-	-
Operation																										
-		-	-	-	-	-	-	-	-	-	-	-	-	-	-	-	-	-	-	-	-	-	-	-	-	-
Decommissioning																										
-		-	-	-	-	-	-	-	-	-	-	-	-	-	-	-	-	-	-	-	-	-	-	-	-	-

(P = Positive, N = Negative and non-mitigatable, M = Negative and mitigatable, U = Unknown)

Project Location



List of Project Geometries

1	point	Prince Leopold Island
2	point	Coburg Island