



## **NIRB Uuktuutinga Ihivriughikhamut #125443**

### **Prince Leopold Island Migratory Bird Sactuary Permit & Nirjutiqarvik NWA wildlife viewing permit**

**Uuktuutinga Qanurittuq:** New

**Havaap Qanurittunia:** Puulaktunik Takuyaktuiyunik Akuiyunik Aihinit

**Uuktuutinga Ublua:** 1/29/2019 5:24:34 PM

**Period of operation:** from 0001-01-01 to 0001-01-01

**Piumayaat Angirutinga:** from 0001-01-01 to 0001-01-01

**Havauhikhaq Ikayuuqtinga:** Nansen Weber  
Canadian Arctic Holidays Ltd.  
PO 1252 STN MAIN  
Yellowknife NWT X1A 2n9  
Canada  
Hivayautit Nampanga:: 2503084656, Kayumiktukkut Nampanga::

## Tukihiannaqtunik havaariya uyumayumik uqauhiyun

Qablunaatitut: We would like to fly and land a Twin-Otter to both Prince Leopold Island and Coburg Island to view the wildlife and birds. We will be using the airstrips that are already designated on the islands and then walk to the cliffs and waters edge. No vessel, all-terrain vehicles or helicopters will be used in either location. Proposed dates for visiting both locations are August 2-4, 2019 weather permitting. This is a one-day visit, with an approximate 3-4 hour viewing at each location.

Uivviititut: Nous aimerions voler et atterrir une Twin Otter à la fois sur l'île Prince Léopold et l'île Coburg. Nous utiliserons les pistes d'atterrissage déjà désignées sur les îles, puis marcherons jusqu'à la falaise et au bord de l'eau. Aucun navire, véhicule tout terrain ou hélicoptère ne sera utilisé à aucun endroit. Les dates proposées pour visiter les deux sites sont les suivantes: du 2 au 4 août, 2019, si le temps le permet. Il s'agit d'une visite d'une journée, avec un visionnage d'environ 3 à 4 heures à chaque endroit.

[illegible]

Inuinnaqtun: I do not know anyone who can translate a document into Inuinnaqtun. Our designated locations are for North Baffin.

Operations Phase: from 2019-07-27 to 2019-07-29

## Hulilukaarutit

Inigiya	Hulilukaarut Qanurittuq	Nunannga Qanurittaakhaanik	Initurlinga qanuritpa	Initurlinga utuqqarnitat unaluuniit Ingilraaqnitat Uyarannguqtut akhuurninnga	Qanitqiyauyuq qanitqiamut nunallaat kitulluuniit ahiruqtaliyainnit nuna
Prince Leopold Island	Tourism Activities	Crown	National Migratory Bird Sanctuary	We are not interested in any archaeological sites	Resolute Bay
Coburg Island	Tourism Activities	Crown	National Wildlife Protected Area	We are not interested in any archaeological sites. We are visiting to see wildlife only.	Grise Fiord

### Nunaliin Ilauyun, Aviktuqhimayuniitunullu Ikayuuhiarunguyun

Nunauyuq	Atia	Timiuyuq	Upluani Uqaqatigiyaungmata
Information is not available			

# Angiuttauvaktunik

Naunaiqlugu nunanga talvani havauhikhaq ittuq:

North Baffin

## Angiuttauvaktunik

Munariniqmut Ayuittiaqtuq	Angirutinga Qanurittuq	Tadja Qanurittaakhaanik	Ublua Tuniyauyuq/Uuktuqtuq	Umikvikhaa Ublua
Kaanatami Huradjat Munariniq	Permit application being processed, waiting on a Inuktitut translated document from Resolute bay local Susan Salluviniq.	Active		

## Project transportation types

Transportation Type	Qanuq Atuqtauniarmangaa	Length of Use
Air	Twin-Otter	

## Project accomodation types

Alaanut,

## Ihuaqutivaluin Atuqtauyukhan

Hanalrutit atuqtaunahuat (ukuallu ikuutat, pampiutainnik, tingmitinik, akhaluutinik, hunaluuniit)

Hanalrutit Qanurittuq	Qaffiuyut	Aktikkulaanga – Qanurittullu	Qanuq Atuqtauniarmangaa
Summit Air Twin-Otter	1	N/A	Fly from Arctic Watch ,Somerset Island to Prince Leopold Island and return to Arctic Watch the same day.
Summit Air Twin-Otter	1	N/A	Fly from Arctic Watch to Resolute Bay then to Coburg Island and return to Arctic Watch the same day.

### Qanurittuq Urhuqyuaq unalu Qayangnaqtut Hunavaluit Aturninnga

Qanurittuq urhuqyuaq hunavaluit aturninnga:	Urhuqyuaq Qanurittuq	Qaffiuyut qattaryut	Qattaryuk Aktikkulaanga	Atauttimut Qaffiuyut	Ilanga	Qanuq Atuqtauniarmangaa
Aviation fuel	fuel	0	0	0	Cubic ft	Plane will be fuel at Arctic Watch and or Resolute Bay. No fueling at the desired visiting locations
No Hazardous materials are part of our activities	hazardous	0	0	0	Cubic ft	N/A

### Imaqmik Aturninnga

Ubluq qanuraaluk (m3)	Aturumayain imavaluin utiqittagaani qanuq	Atulirumayain imavaluin utiqittagani humi
0		

# Iqqakuq

## Ikkakunik Munakgiyauyunik

Havauhikhaq Hulilukaarut	Qanurittuq Iqqakut	Ihumagiyauyuq Qanuraaluktut Atuqtait	Qanuq Iqqakuurniarmangaa	Halummaqtirarnirutikhan piyutin
Environmental monitoring site	Anaagun (inuin anaaguin)	0	Guests will be expected to have restroom needs before departure to the island at Arctic Watch Lodge. If a guest or guide does need to have an emergency restroom break, all personal garbage or waste will be carried off the island in a garbage bag by guests themselves or the guides.	N/A

### Avatiliriniqmut Ayurhauingit:

Canadian Arctic Holidays is a tourist company. Guests travel from around the world to visit Arctic Watch wilderness lodge and Arctic Haven Wilderness lodge. All our tours and activities offered through are our operations are largely based on wildlife viewing. We aim to preserve and care for the species and environment at all times above all. In doing so we wish to show guest from around the world the beauty Nunavut has to offer. We do not think visiting Prince Leopold Island and Coburg will have any environmental impacts. We will not do any flybys over nesting cliffs or shores at either location, all viewing will be done by foot. We always convey the message to our guest to keep a reasonable distance from birds and wildlife in order not to scare or disturb off any wildlife. We will be using already designated landing strips and there for not disturbing the tundra. Archaeological sites are not of interest and will be left alone.

# **Additional Information**

**SECTION A1: Project Info**

**SECTION A2: Allweather Road**

**SECTION A3: Winter Road**

**SECTION B1: Project Info**

**SECTION B2: Exploration Activity**

**SECTION B3: Geosciences**

**SECTION B4: Drilling**

**SECTION B5: Stripping**

**SECTION B6: Underground Activity**

**SECTION B7: Waste Rock**

**SECTION B8: Stockpiles**

**SECTION B9: Mine Development**

**SECTION B10: Geology**

**SECTION B11: Mine**

**SECTION B12: Mill**

**SECTION C1: Pits**

**SECTION D1: Facility**

**SECTION D2: Facility Construction**

**SECTION D3: Facility Operation**

**SECTION D4: Vessel Use**

**SECTION E1: Offshore Survey**

**SECTION E2: Nearshore Survey**

**SECTION E3: Vessel Use**

**SECTION F1: Site Cleanup**

**SECTION G1: Well Authorization**

**SECTION G2: Onland Exploration**

**SECTION G3: Offshore Exploration**

**SECTION G4: Rig**

**SECTION H1: Vessel Use**

**SECTION H2: Disposal At Sea**

**SECTION I1: Municipal Development**

**Qanurittuq Ittunik Avatinga: Avatingalluanga**

**Qanurittuq Ittunik Avatinga: Inuuhimayunut Avatinga**

**Qanurittuq Ittunik Avatinga: Inungit-maniliurutingit Avatinga**

**Miscellaneous Project Information**

**Naunaiyainiq ukuninnga Ayurhautingit unalu Piumayaat Ikikliyuumiutinahuarutit**

**Tamatkiumayunik Ihuikgutivaktunik**

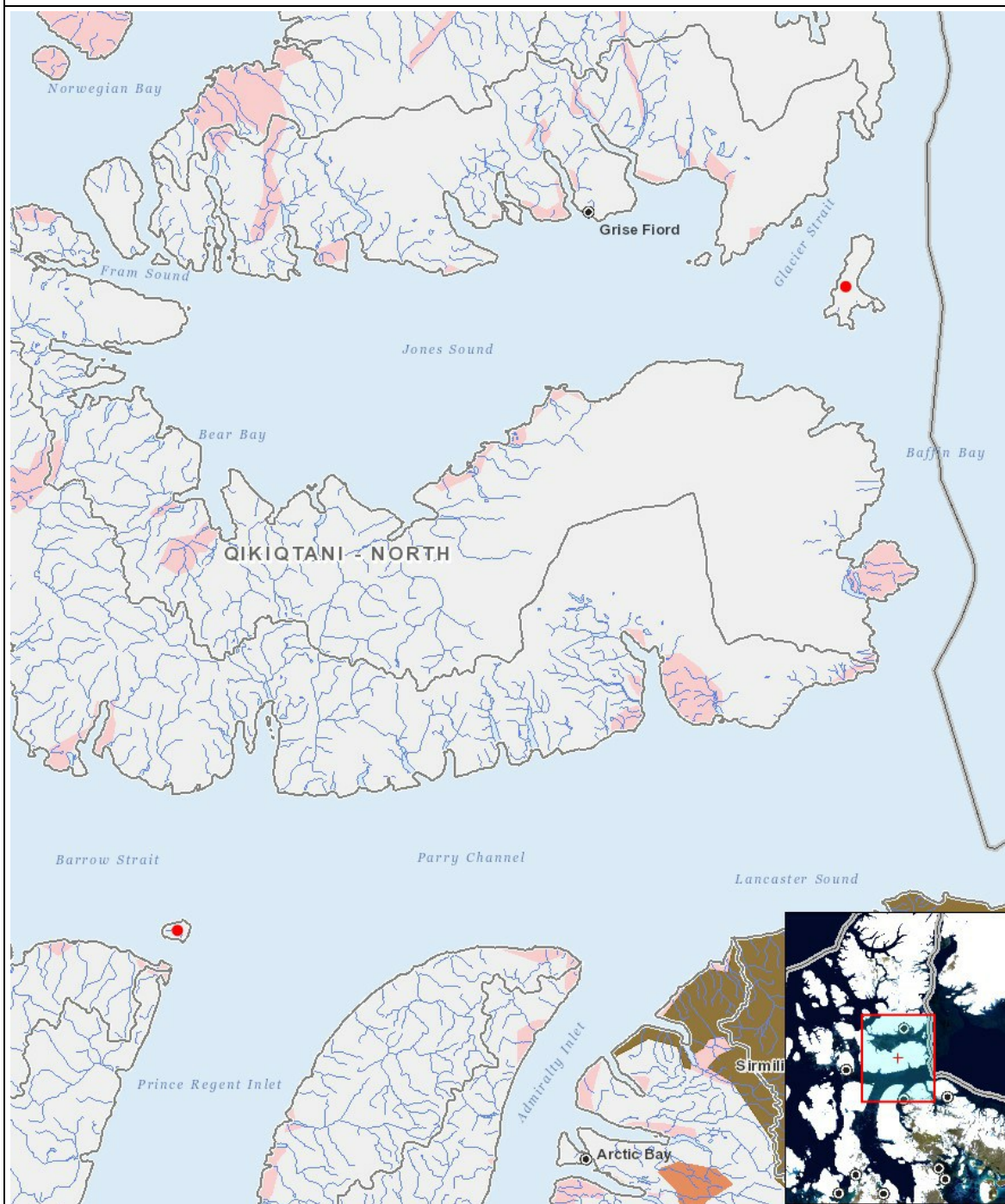
## Impacts

## Ilitariyauniq Avatiliriniqmut Ayurhautingit

[illegible]

(P = Nakuuyuq, N = Nakuungittut unalu mikhilimaittuq, M = Nakuungittut unalu mikhittaaqtuq, U = Naluyauyuq)

# Havaariyauyukhamut Nayugaa



## List of Project Geometries

1	point	Prince Leopold Island
2	point	Coburg Island