

▷ᵇᶜ▷ᵀᶜ: 207-721-5149, ᵀᵇᶜᵀᵇᵀᶜ:

כ ה ד ל ז ב ה ג

$$\mathfrak{f}_b \Delta^c \mathfrak{J} \cap \sigma^b \quad \wedge \text{---} \mathfrak{z} \mathfrak{d}^{\mathfrak{f}_b} \sigma \mathfrak{d} \mathfrak{z} \mathfrak{d}^{\mathfrak{a}_b} \sigma^b$$

٩٦٠٤٨٧٢١: Please see the attached document.

▷ΔΛΝΔ<sup>c</sup>: Please see the attached document.

$\Delta \mathfrak{b} \cap \mathcal{C}$ : Please see the attached document.

Inuinnaqtun: Please see the attached document.

## Personnel

Personnel on site: 3

Days on site: 10

Total Person days: 30

Operations Phase: from 2019-07-07 to 2019-07-27

$$\Lambda \subset \mathbb{N} \triangleleft \mathbb{N} \xrightarrow{\sigma} \mathbb{N}^b \supset \mathbb{C}$$
[illegible]

$\Delta \subset D^{\text{fr}} C D^{\text{or}} L$  မှာ  $\Delta \cap D^{\text{fr}} C D^{\text{or}} L = \emptyset$  ဖြစ်သည်။ ထို့ကြောင့်  $\Delta \subset D^{\text{fr}} C D^{\text{or}} L$

შეცდომა <sup>ა</sup>	დანი <sup>ბ</sup>	ბიზნესი <sup>გ</sup>	საბჭო საბჭო <sup>დ</sup>
Information is not available			

$\epsilon \Delta^{\alpha} j^{\beta} \wedge J^{\alpha} e^{\beta} \dot{N} \quad \nabla^{\alpha} r^{\beta} C D P L \dot{\chi}^{\gamma}$

$a_1 r^0 r^a \sigma^b$   $\Lambda_{C-2} q_n^e \Delta D \sigma^d \gamma^c$   $\Pi \Pi \gamma^f \omega^c:$

## South Baffin

ᄒᄆᄇᄃ ᄇᄃᄂᄃᄃ ᄇᄃᄃᄃᄃᄃᄃᄃᄃ

[illegible]

### Project transportation types

Transportation Type	Transportation Mode	Length of Use
Air	helicopter	

### Project accomodation types

◁ ୨୦୧୬,

◁▷↳σ◁<sup>96</sup>▷<sup>96</sup>

[illegible]

ᐃᓕᑦᑭᑦ ᐱᓕᑦ ᐃᑐᒐᐅᓂᐃᓕᑐᓕᑦ ᓕᓄᐃᑦᑐᓂᓕᒐ	ᓕᓕᑦᑯᐅᑦᑦ	ᐃᓕᑦᓂᓕᑦ - >ᓕᑐᓂᓕᑦ	ᑯᐱᑦ ᐃᑐᒐᐅᓂᐃᓕᑦ
hand-held soil coring devices	2	150 x 10 cm	to collect soils as described in the project description
drone	1	50 x 50 cm	aerial imagery of landscape vegetation as described in the project description
helicopter	1	unknown	round trip transport to sites from Iqaluit
GPS unit	1	100 cm x 20 cm	to map peat patches and topography as described in project description

በበፍጥረቱ ምሳሌ ለፍጥነቱ ምሳሌ ለፍጥነቱ ምሳሌ

[illegible]

$\Delta L^{\epsilon_b} \quad \triangleleft \triangleright^{\epsilon_b} C \triangleright \triangleleft \dot{L}^{\epsilon_b} \triangleright^{\epsilon_b}$

၂၁၁ ငါး ခုနစ် နှစ်	၂၁၁ ငါး နှစ် နှစ်	၂၁၁ ငါး နှစ် နှစ်
၀		

$\triangleleft^b C d^c$ 
$$\Delta^b C d_C \sim \sigma \Delta^a \sigma^a$$

<p>Λ&lt;ηΔηδΔΔΔΔΔ<sup>c</sup></p> <p>Λ&lt;ηΔηδΔσΔ<sup>ςb</sup>Δ<sup>ςb</sup></p>	<p>ςbΔ<sup>c</sup>Δ<sup>ςb</sup></p> <p>Δ<sup>b</sup>Δ<sup>c</sup>Δ<sup>ςb</sup></p>	<p>ςbΔΠΓ Δ<sup>b</sup>Δ<sup>c</sup>Δ<sup>c</sup></p> <p>ςbΠΔσΔ<sup>ςb</sup>ΔηδΔΔ<sup>c</sup></p>	<p>ςbΔ<sup>ςb</sup></p> <p>Δ<sup>b</sup>Δ<sup>c</sup>Δ<sup>ςb</sup>ΔσΔ<sup>ςb</sup>Δ<sup>c</sup></p>	<p>ςbΔΔ<sup>ςb</sup>ΔΔΠ<sup>b</sup>Δ<sup>b</sup>Δ<sup>a</sup>ΔσΔ<sup>ςb</sup>Δ<sup>c</sup></p>
Information is not available				

$$4^a 0 \Gamma \Delta C \dot{\sigma}^c \dot{\gamma}^c \quad 4^b \dot{\gamma}^b C \Delta \Gamma L \dot{\gamma}^c$$

We do not anticipate environmental impacts. The only impacts will be a few small soil core holes that will be backfilled at each site.

# **Additional Information**

**SECTION A1: Project Info**

**SECTION A2: Allweather Road**

**SECTION A3: Winter Road**

**SECTION B1: Project Info**

**SECTION B2: Exploration Activity**

**SECTION B3: Geosciences**

**SECTION B4: Drilling**

**SECTION B5: Stripping**

**SECTION B6: Underground Activity**

**SECTION B7: Waste Rock**

**SECTION B8: Stockpiles**

**SECTION B9: Mine Development**

**SECTION B10: Geology**

**SECTION B11: Mine**

**SECTION B12: Mill**

**SECTION C1: Pits**

**SECTION D1: Facility**

**SECTION D2: Facility Construction**

**SECTION D3: Facility Operation**

**SECTION D4: Vessel Use**

**SECTION E1: Offshore Survey**

**SECTION E2: Nearshore Survey**

**SECTION E3: Vessel Use**

## SECTION F1: Site Cleanup

## SECTION G1: Well Authorization

## SECTION G2: Onland Exploration

## SECTION G3: Offshore Exploration

**SECTION G4: Rig**

## SECTION H1: Vessel Use

## SECTION H2: Disposal At Sea

## SECTION 11: Municipal Development

**ᐱᓪᑲ ᐃᑦᐅᑦ ᖃᓄᐃᑦᑐᑦ ᑕᓚᐅᑭᓂ:** ᓄᓇᐅᑦ ᖃᓄᐃᑦᑐᑦ

ᐱᓪᓗ ᐱᑦᑎᐅᑦ ᑭᓪᓗᐅᑦ ᐅᓪᓗᐅᑦ: ᐅᐱᑭᑦᐅᑦᓪᓗ

**ᐱᓪᑲ ᐃᑦᑎᐅᑦ ᖃᓄᐃᑦ)ᑦᑕᑎᐅᓂᖃᑦ: ᐃᓄᑕᑎᓂᖅᑭᖅᐳᑦ-ᐱᑦᑕᐃᑦᑕᑎᓂᖅᑭᖅᐳᑦ**

### Miscellaneous Project Information

$\Delta^{\text{fb}} \text{CD} \sigma^{\text{fb}} \Gamma^{\text{C}} \quad \Delta^{\text{fb}} \text{CD} \Gamma^{\text{L}} \Gamma^{\text{C}} \quad \text{fb} \Delta^{\text{C}} \sigma^{\text{fb}} \Gamma^{\text{C}} \quad \angle \text{D} \Gamma^{\text{L}} \Gamma^{\text{fb}} \text{CD} \sigma^{\text{fb}} \Gamma^{\text{C}}$

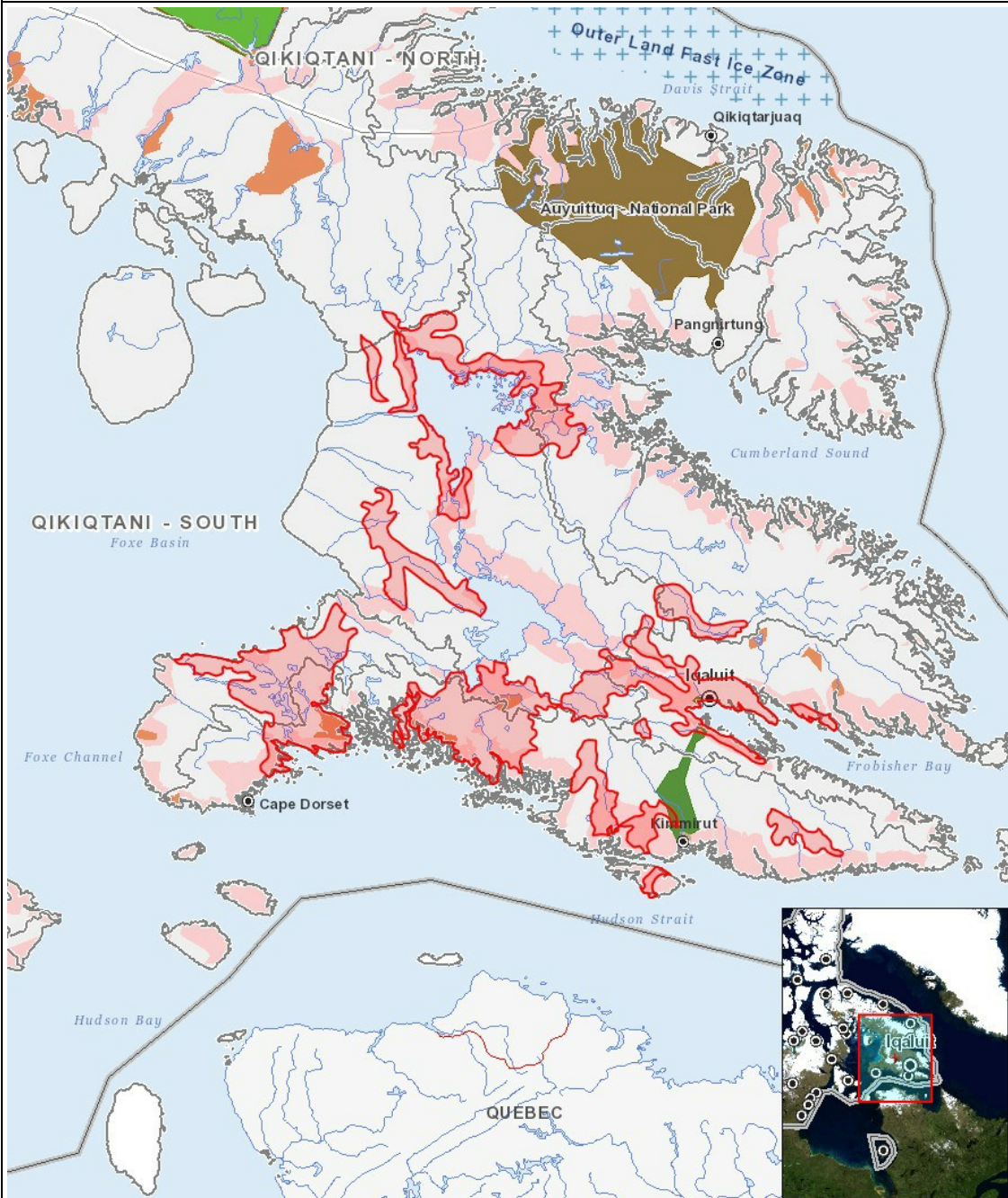
## Cumulative Effects



## Impacts

$\mathcal{L}(\mathcal{A}) \subseteq \mathcal{L}(\mathcal{B})$

[illegible][illegible]

$$a \dot{\Gamma}^L L^a \dot{J}^{\zeta_b} \wedge c_n \triangleleft_n \triangleright \zeta^{\zeta_b}$$


## List of Project Geometries

1	polygon	Baffin_G3
---	---------	-----------