

ᐅᓕᑲᐱᓕᑦᑐᐱᓄᓂᒃᑐᑦ ᐱᓕᓴᑭᑖᑖᑦᑲᐱᑦ ᐅᓂᑲᑲᑲ - ᑖᐱᓗᓂᓂ #02 058 19N-M

1. ፍፁም ስራ ማጠናቀቅ

[illegible]

ለጥራቅካሳ ለተመዘገቡ ለክፍሎች ወደፊት የሚከተሉትን ለጋራዊነት ምርመራ ይኖራቸዋል 5.3, የጥናቱ 5-1. ወደፊት ክፍሎች ወደፊት ለክፍሎች ለጋራዊነት ይኖራቸዋል 5.5.

[illegible]

2. $Cd^{b_1} \triangleright \cap C \triangleright^< \triangleleft \cap^a L$

በካሊፍ ድጋፍ ልማት ምክር ቤት (ምክር ቤት ልማት)

3. $Cd^{b_1} \triangleright C \triangleright^c$ $\underline{Q} \Gamma^a \sigma_{\alpha\beta} \gamma^\mu r^c$

ኒዩዮርክ ኃይማኖትና ልማት ሚኒስቴር ለግለሰብና ለጥያቄ አቅርቦት ሚኒስቴር 3-1 ልጋጋሪ ርዕሰ ምክር ቤት ምክር ቤት ምክር ቤት

የፖርቱጋል ንግድ 3-1: ወደ ምድር የክልላዊ ስራ ልማት

| ልዑክ | ልዑክ ስም | ካርዲኖኖ | ካርዲኖኖ | ፎቶ |
|-------|------------|--------------|--------------|------------|
| ገብረገብ | ፍቅር ልዑክ ስም | 70° 28.189'N | 68° 34.616'W | ፎቶ 12, 13 |
| ፍቅር | ፍቅር ልዑክ ስም | 73° 1.529'N | 85° 7.203'W | ፎቶ 9, 10 |
| ፍቅር | ፍቅር ልዑክ ስም | 76° 25.001'N | 82° 54.935'W | ፎቶ 15, 16 |
| ፍቅር | ፍቅር ልዑክ ስም | 74° 41.472'N | 94° 51.549'W | ፎቶ 18 - 20 |

4. ካዲፖሊኒየም ሶሊዲየት ወደ ሶጲዲዮኒየም

፲፱፻፷፱ ዓ.ም. ጥቅምት ፳፯ ቀን ለፌዴራል ፖሊስ ሰራተኛው ልጅ ለገሰ ገብረ ሙሉ ስም ለገሰ ገብረ ሙሉ ስም ለገሰ ገብረ ሙሉ ስም 4-1.

የዖፍኖንግካፍ 4-1: ካዲናርቢኖኖ ልብጋጋ ጋንቢልፍልካፍ ጋዖፍጋፍ ኒብኖፍ

| | |
|----------------------|---|
| ጋኒብረት ልማት | ፌዴራል |
| አዲስ አበባ / ህወሓት | ፌዴራል ልማት ዘርፍ - ፌዴራል ልማት ዘርፍ (DFO-SCH) |
| ፌዴራል | ፌዴራል ልማት ዘርፍ, አዲስ አበባ, አዲስ አበባ ፌዴራል |
| አዲስ አበባ ጋኒብረት ልማት | የፌዴራል ልማት ዘርፍ ዘርፍ, ፌዴራል ልማት ዘርፍ 501 ፌዴራል ልማት ዘርፍ ዘርፍ ፌዴራል, ፌዴራል R3T 2N6 ፌዴራል: 204-984-1102 ፌዴራል: 204-983-7166 ፌዴራል: Eleanor.McEwan@dfo-mpo.gc.ca , |
| ፌዴራል ልማት / ጋኒብረት ልማት | ፌዴራል ልማት ዘርፍ, ፌዴራል ልማት ዘርፍ, R.P.Bio. |
| ፌዴራል ልማት ጋኒብረት ልማት | ፌዴራል ልማት ዘርፍ ዘርፍ 500 - 4321 ፌዴራል ልማት ዘርፍ ፌዴራል, ፌዴራል ፌዴራል V5C 6S7 ፌዴራል: 778-945-5501 ፌዴራል: 778-839-2372 ፌዴራል: 604-298-1625 ፌዴራል: Victoria.Coutts@advisian.com |

5. መግቢያ የክልሉ አጠቃላይ

[illegible]

ፆፂ፻ ሳኔገላሳገረ ስሙ ልጁኔ፡

- ርቢድሊ ልጅ ስሙ ስለሆነው
- ስለሆነው ልጅ ስሙ ስለሆነው
- ልጅ ስሙ ስለሆነው
- ልጅ ስሙ ስለሆነው
- ልጅ ስሙ ስለሆነው
- ልጅ ስሙ ስለሆነው
- ልጅ ስሙ ስለሆነው

[illegible]

5.2 ንፍታዊ ምልክት ልዩ

[illegible]

- SCH – ᐃᑦᐃᐃᑦᐃᑦ
- ᐃᑦᐃᑦᐃᑦᐃᑦ ᐃᑦᐃᑦᐃᑦ ᐃᑦᐃᑦᐃᑦᐃᑦ; (ᐃᑦᐃᑦᐃᑦᐃᑦ ᐃᑦᐃᑦᐃᑦᐃᑦ ᐃᑦᐃᑦᐃᑦᐃᑦ ᐃᑦᐃᑦᐃᑦᐃᑦ)
- ᐃᑦᐃᑦᐃᑦᐃᑦᐃᑦ ᐃᑦᐃᑦᐃᑦᐃᑦ ᐃᑦᐃᑦᐃᑦᐃᑦ (ᑦᐃᑦ ᐃᑦᐃᑦᐃᑦᐃᑦᐃᑦᐃᑦ ᐃᑦᐃᑦᐃᑦᐃᑦᐃᑦᐃᑦ)

[illegible]

5.3 ናይጉሳዊ ልሳናዊ ስርዓት

[illegible]

የፖሊስ ንግግር 5-1: ለፖሊስ ንግግር የፖሊስ ንግግር

| ለኅወያኔ ምክር ቤት ምክር ቤት | ለኅወያኔ/ሪፖርት ሰነድ | ለኅወያኔ ምክር ቤት |
|---------------------|-------------------------|--------------------------|
| NRI | 02 058 19N-M | የከፍተኛው ሪፖርት |
| NPC | 149159 | ፌዴራል ሪፖርት |
| NIRB | 19YN031 | የፖለቲካ ምክር ቤት ሪፖርት |
| GN-CH | No. 2019-51A - ልዩ ሪፖርት | ሪፖርት 2 ዓመት ልዩ ሪፖርት ለኅወያኔ |
| | No. 2019-52A - ልዩ ሪፖርት | |
| | No. 2019-53A - የልዩ ሪፖርት | |
| | No. 2019-54A - የልዩ ሪፖርት | |
| DFO | S-19/20-1018-NU | ሪፖርት ለኅወያኔ ምክር ቤት ሪፖርት |

5.4 5bD^{9b}C⁹ΔD^{1c}

[illegible]

5.4.1 C₆H₆ Δ⁵b_uσ^b ኖልጉኒኒ

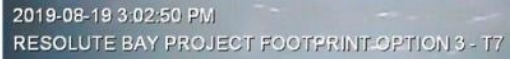
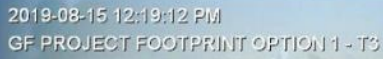
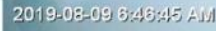
[illegible]

- $\Delta^a \rightarrow \Delta^c \Delta^a \rightarrow$ ዲፍረክሽን
- $\Delta \rightarrow \Delta^c \Delta^a \rightarrow$ ዲፍረክሽን

- $\Delta L^{\text{qb}} \triangleright^C \text{ bcl}^{\text{qb}} \triangleright L \text{ rsc}^{\text{qb}} \text{ r}^{\text{a}} \text{ m}^C$

5.4.1.1 $\Delta^a b \Delta^c \Delta^a b^c$ သေသန

[illegible][illegible][illegible]



ᐊᓐᓕᐊᓐ 5-2: ᐅᓕᓐᓐᓐ (SCH ᓐᓐᓐᓐᓐ ᐅᓐᓐᓐᓐ) ᐊᓐᓐᓐᓐ ᓐᓐᓐᓐᓐ. ᐅ) ᓐᓐᓐᓐᓐᓐ, ᐅ) ᐅᓐᓐᓐᓐᓐ, ᐊ) ᐊᓐᓐᓐᓐᓐ, ᐱ) ᓐᓐᓐᓐᓐᓐ



Advisian 6

መፅሐፍ ኮሎኒያል ልዩነቶችን ለማሳወቅና ለመቀነስ ለሚያስችል ምረቃ ስልጣን ለሚሰጥ ሰነድ ማዕዘን ማዘጋጀት ይገባል። ለዚህም ምሳሌ ለሚያስፈልግ ሰነድ ማዕዘን ማዘጋጀት ይገባል።

[illegible][illegible]

[illegible][illegible]

5.4.3 $\wedge P^{\text{qb}} \supset^c \text{mod} \Delta^{\text{a}} \text{a}^{\text{q}} \Gamma^{\text{b}}$ $\text{q} \rho \Gamma^{\text{q}} \text{p} \text{p} \sigma^{\text{a}} \rho^{\text{c}}$

[illegible][illegible][illegible]

5.4.4 ▷၌နမူရင် ဝေဖန်ရန် နိဂုံးချုပ်ပုံစံ

[illegible][illegible]

5.4.5 \triangleright ን Δ^c $\Delta\rho$ ልዩ ስጦታ

[illegible][illegible][illegible][illegible][illegible]

5.4.6 $\Delta^c C^c \sigma^c \wedge \sigma^c \vdash \sigma^c$ የቦርኒንግ ምርጫ

[illegible][illegible]

$\Delta_{\partial \Delta^c}$ ን፡ \triangleright ሊንጋጂካል (IQ)

[illegible][illegible][illegible]

፲፩ ሥነ-ጥናት ስለሚገኝ ልማት ስራ ማረጋገጥና ማረጋገጥ ማረጋገጥ፡

- [illegible]



[illegible]

ᐱᓄᓂᔭᕈᕋᕆᑦᕆᓂᓴᓯ.

6. $\Delta r^c \cap \nabla r^c$

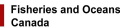
Λ^a ⊆ Πσ^b Λ_ΠΠ^c.

$\Delta L^{\epsilon} \Gamma \triangleright C \ulcorner \lambda^b d^c - \triangleright^{\epsilon b} d \Delta \Delta \ulcorner \lambda^c$ DFO-SCH.



ᐅᐃᐅᐅᐅᐅᐅ 1

ᐅᐅᐅᐅᐅᐅᐅ

[illegible][illegible]

Date: 14-JUN-1

Drawn by:

Edited by:

App'd by: VB

Project No.

307071-01306

FIG No

1

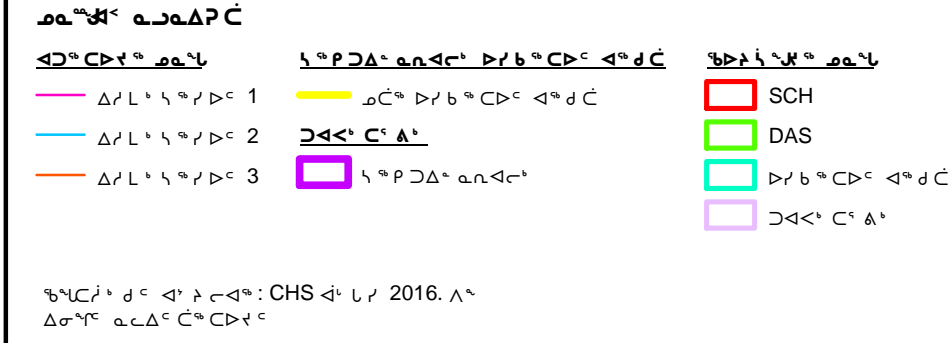
0

"This drawing is prepared solely for the use of our customers as specified in the accompanying report. WorleyParsons Canada Services Ltd. assumes no liability to any other party for any representations contained in this drawing."



- [illegible]

[illegible]

[illegible]