

**2023 ANNUAL REPORT:**  
***N2022C0006***  
***Roma Gold Project***

**Kitikmeot Region, Nunavut**

**2024**



## Table of Contents

|  |          |
|--|----------|
| <b>LIST OF FIGURES.....</b>  | <b>2</b> |
| <b>LIST OF TABLES .....</b>  | <b>2</b> |
| <b>1.0 TABLE OF CONCORDANCE: ROMA ANNUAL REPORTING REQUIREMENTS, BY AUTHORIZATION.....</b> | <b>3</b> |
| <b>2.0 INTRODUCTION .....</b>  | <b>4</b> |
| <b>3.0 LAND USE ACTIVITIES IN 2024 .....</b>   | <b>4</b> |
| <b>4.0 WORK PLAN FOR UPCOMING FIELD SEASON .....</b>                                       | <b>8</b> |
| <b>5.0 RECLAMATION WORK .....</b>  | <b>8</b> |

## List of Figures

|  |          |
|--|----------|
| <b>Figure 1: Location of Blue Star’s Roma Project.....</b> | <b>5</b> |
| <b>Figure 2: Location map of 2024 activities. ....</b>     | <b>6</b> |

## List of Tables

|   |          |
|---|----------|
| <b>Table 1. N2022C0006 Reporting Requirements. ....</b>                         | <b>3</b> |
| <b>Table 2. Roma Gold Project coordinates for 2023 program components. ....</b> | <b>7</b> |

## 1.0 TABLE OF CONCORDANCE: Roma Annual Reporting Requirements, by Authorization

*Table 1. N2022C0006 Reporting Requirements.*

| Corresponding Authorization Item/Paragraph # | Term   | Corresponding Report Section |
|--|--|------------------------------|
| <i>N2022C0006</i>                            |  |                              |
| 10.  | The Permittee shall submit an annual report to the Engineer by March 30 <sup>th</sup> of each year of permitted activities. The annual report must contain, but not limited to, the following information:   | 2                            |
| 10.a)  | a technical summary of the activities undertaken for the year;   | 3                            |
| 10.b)  | a table and map showing the following items, if applicable, with exact coordinates in degree/min/sec format, in NAD 83:<br>i. All camp locations;<br>ii. Airstrip and landing location;<br>iii. All drilling locations;<br>iv. All petroleum fuel storage containers;<br>v. Any other locations where activities were conducted;<br>vi. All active and backfilled sumps; | 3                            |
| 10.c)  | a work plan for the following year; and  | 4                            |
| 10.d)  | a summary of progressive reclamation work undertaken.  | 5                            |

## 2.0 Introduction

---

Blue Star Gold Corp. (Blue Star) is providing this report in fulfillment of annual reporting requirements pursuant to the land use permit N2022C0006 conditions.

Blue Star's Roma Project (Roma) is located approximately 50 kilometers north of its Ulu Gold Project (Ulu) and camp. The Roma Gold Project is comprised of Crown claims and a Mineral Exploration Agreement (MEA) with Nunavut Tunngavik Incorporated (NTI). Roma activities were coordinated with works undertaken at Ulu, with the Ulu camp and infrastructure supporting Roma exploration. Ulu is discussed herein to inform an understanding of local site activities and program context. Crews and supplies accessed Ulu site via fixed wing aircraft from Yellowknife to the Ulu airstrip. Personnel and supplies arriving and departing by plane were shuttled between the Ulu airstrip and Ulu camp by light duty vehicle. The remote Roma work areas were accessed by helicopter.

The Auma prospect, formerly known as the Bamako showing (Claim name: BAM01, Unit claim: 103030) on Inuit Owned Lands (IOL), parcel CO-26, was staked by Blue Star Gold Corp. in June 2023 as part of the Roma Project. The Auma prospect is located on the western margin of the High Lake Greenstone Belt and has a size of 614.378 ha. Historical work on the recently staked Auma Prospect includes airborne electromagnetics (AEM), ground-based magnetics and horizontal loop EM (HLEM), mapping, prospecting and six 'gopher' drill holes.

The High01 prospect, formerly known as the HI01 showing (Claim name: HIGH01, Unit claim: 103529) was staked by Blue Star Gold Corp. in November 2023 as part of the Roma Project. The High01 prospect on Crown Lands is located west of the High Lake Greenstone Belt and has a size of 512.381 ha. Historical work includes airborne electromagnetics (AEM), vertical loop EM (VLEM), mapping, prospecting, and two drill holes (Figure 1).

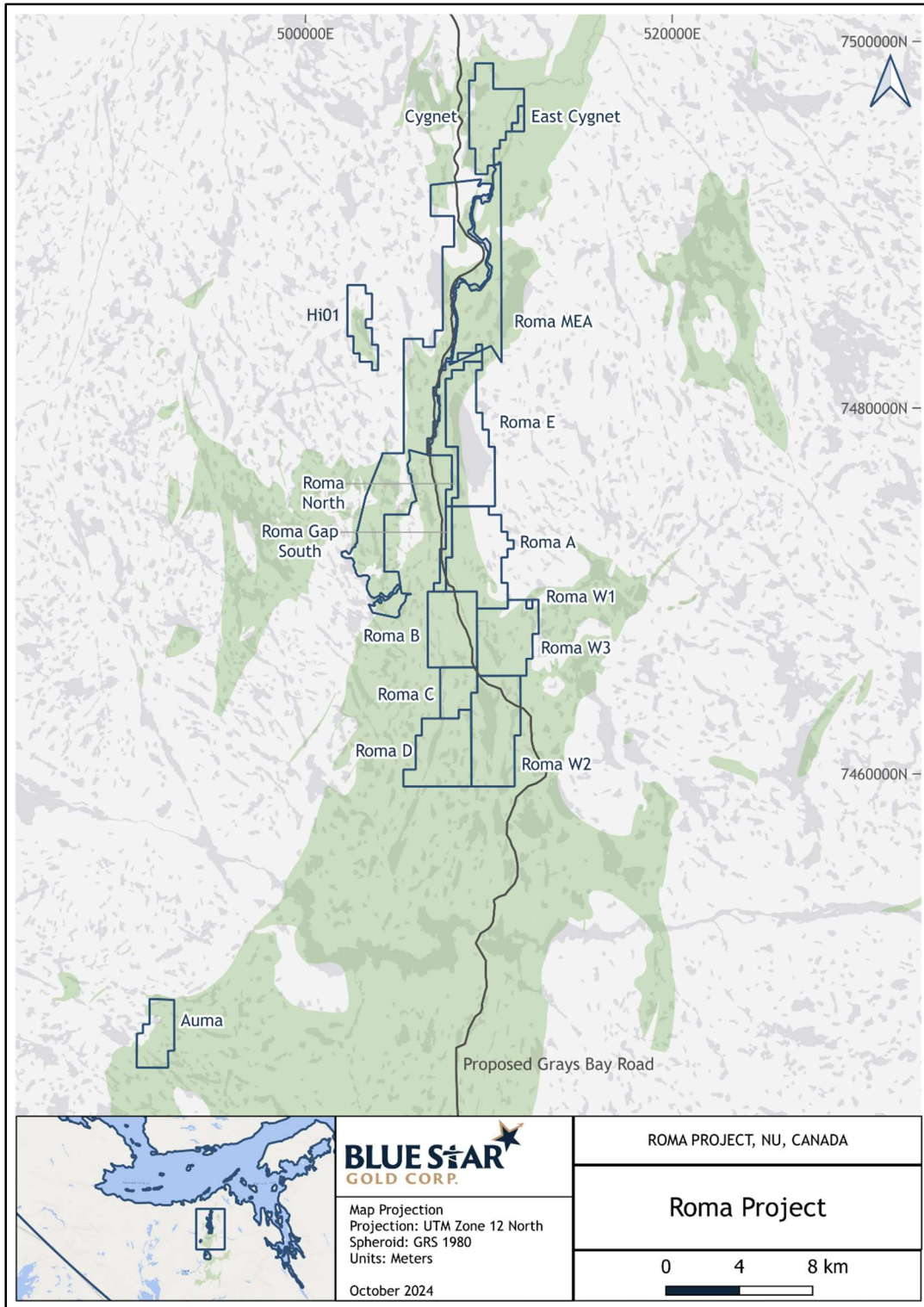
2024 Activities undertaken at Roma including the Auma prospect, were limited to surface exploration such as mapping, ground based geophysical surveys, prospecting and rock sampling while the High01 prospect also core drilling totaling 1365 meters in five drill holes.

This report has been submitted on or before March 30, 2024.

## 3.0 Land use activities in 2024

---

All exploration activities were undertaken based out of the Ulu camp. Land use activities in 2024 on Roma Project area, Auma prospect, and High01 prospect occurred between June 02 and August 11<sup>th</sup>, and involved ground based geophysical surveys, mapping, prospecting rock sampling and drilling. During the 2024 season a total of five drill holes for 1,365 meters were completed, 115 rock samples were collected, and 5.8 line-kilometers of fixed loop electromagnetic surveying was completed.



*Figure 1: Location of Blue Star's Roma Project*

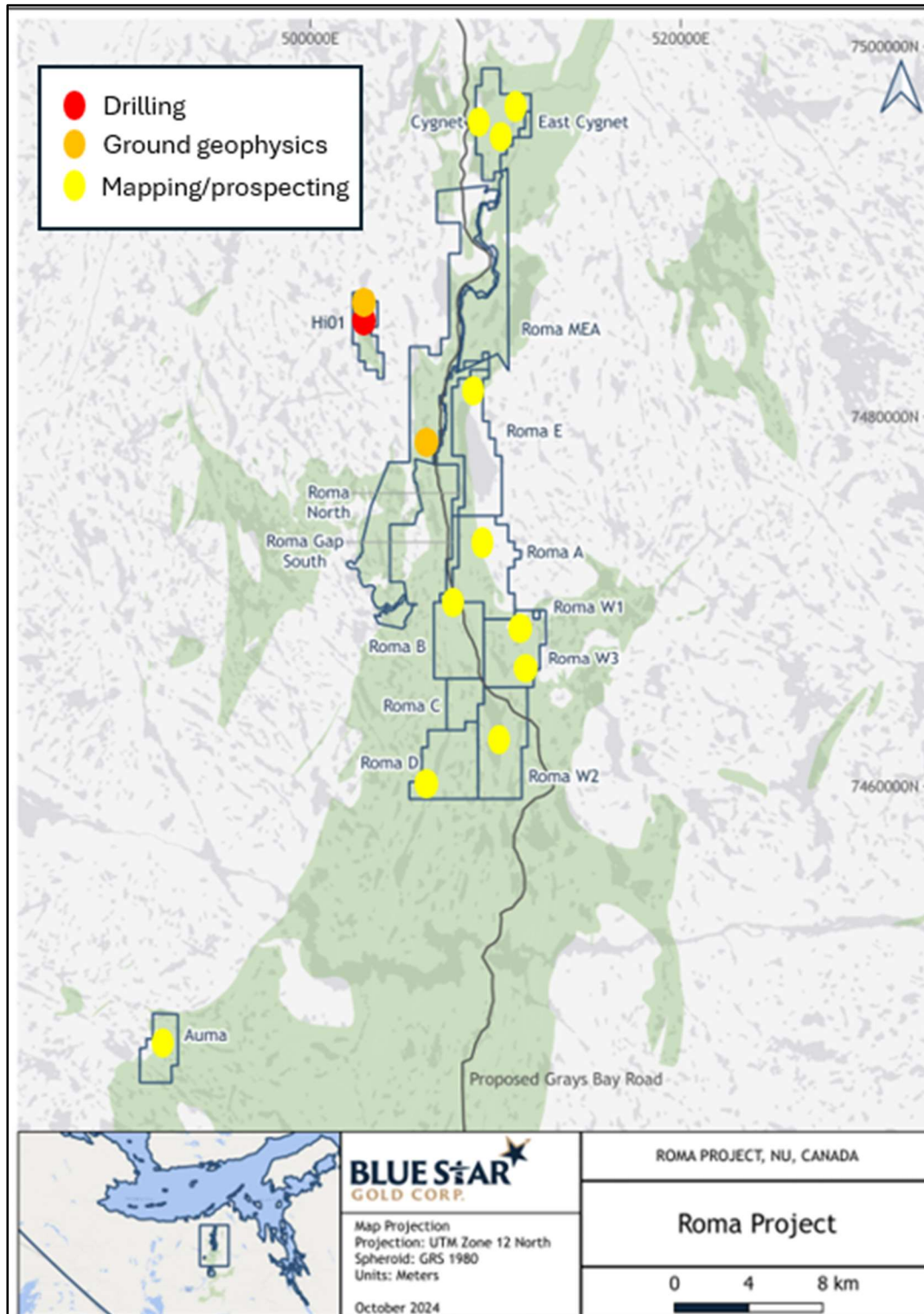


Figure 2: Location map of 2024 activities.



**Table 2. Roma Gold Project coordinates for 2024 program components.**

| Item                                      | Coordinates   |
|---|---|
| Camp locations                            | No camp built or existing in 2024                       |
| Airstrip and landing location             | No air strip and landing location in 2024               |
| Petroleum fuel storage containers         | No petroleum fuel storage installed in 2024             |
| Locations where activities were conducted | Not applicable; only limited basic surface work in 2024 |

| Hole         | item   | Latitude (N)       | Longitude (W)       |
|--------------|--------|--------------------|---------------------|
| DD24-HII-001 | collar | 67° 29' 9.192462"  | 110° 55' 30.235661" |
|              | sump   | 67° 29' 10.613136" | 110° 55' 29.894183" |
|              | pump   | 67° 29' 10.32418"  | 110° 55' 33.517838" |
| DD24-HII-002 | collar | 67° 29' 9.192462"  | 110° 55' 30.235661" |
|              | sump   | 67° 29' 10.613136" | 110° 55' 29.894183" |
|              | pump   | 67° 29' 10.32418"  | 110° 55' 33.517838" |
| DD24-HII-003 | collar | 67° 29' 9.192462"  | 110° 55' 30.235661" |
|              | sump   | 67° 29' 10.613136" | 110° 55' 29.894183" |
|              | pump   | 67° 29' 10.32418"  | 110° 55' 33.517838" |
| DD24-HII-004 | collar | 67° 29' 5.512501"  | 110° 55' 33.027349" |
|              | sump   | 67° 29' 6.76977"   | 110° 55' 28.474124" |
|              | pump   | 67° 29' 10.320265" | 110° 55' 25.092866" |
| DD24-HII-005 | collar | 67° 29' 12.324747" | 110° 55' 30.225788" |
|              | sump   | 67° 29' 13.969652" | 110° 55' 26.00793"  |
|              | pump   | 67° 29' 9.968741"  | 110° 55' 33.013448" |
| DD24-MIK-001 | collar | 66° 56' 20.439121" | 110° 57' 11.660374" |
|              | sump   | 66° 56' 19.987991" | 110° 57' 15.037896" |
|              | pump   | 66° 56' 2.132371"  | 110° 57' 25.363997" |
| DD24-MIK-002 | collar | 66° 56' 2.132371"  | 110° 57' 25.363997" |
|              | sump   | 66° 56' 19.987991" | 110° 57' 15.037896" |
|              | pump   | 66° 56' 2.132371"  | 110° 57' 25.363997" |
| DD24-MIK-003 | collar | 66° 56' 23.25"     | 110° 57' 16.184823" |
|              | sump   | 66° 56' 22.475511" | 110° 57' 18.162903" |
|              | pump   | 66° 56' 2.132371"  | 110° 57' 25.363997" |
| DD24-RHO-001 | collar | 6° 53' 45.511728"  | 110° 58' 38.115792" |
|              | sump   | 66° 53' 45.575562" | 110° 58' 33.018519" |
|              | pump   | 66° 53' 47.253621" | 110° 58' 25.288681" |

## **4.0 Work Plan for upcoming Field Season**

---

Scoping of the 2025 Roma program is underway. The program is expected to be a continuation of the 2024 program, focusing on follow up of the drill results and significant outcomes from prior programs including further evaluation of Auma, Roma Main, Roma Fold and other targets that have not yet been removed from the target list.

The exploration program will continue similarly to previous years with ground-based mapping and prospecting/sampling activities and select ground-based geophysical surveys on High01 and Auma. Additional diamond drilling has been proposed for the Roma property will be contemplated for the 2025 work program.

As every year, Blue Star strives to keep its footprint as small as possible in its exploration program and will continue to do so in 2025. This includes evaluation of proposed drill locations, active drill site inspections, documentation of pre- and post-drilling status of the drill pads and immediate remediation of drill pads. Continued use of the on-site analysis of till and rock samples using pXRF technology will continue.

Camp and infrastructure construction are not proposed for the field program in 2025, work activities would be supported out of Ulu camp.

## **5.0 Reclamation Work**

---

Due to the fact that Blue Star has not constructed any camps, facilities, or infrastructure on the Roma Project, reclamation work has not yet been required.

Progressive reclamation of drill sites is on-going with the removal of collars and anchors, clean up and spreading of peat moss to encourage seed capture and regrowth.