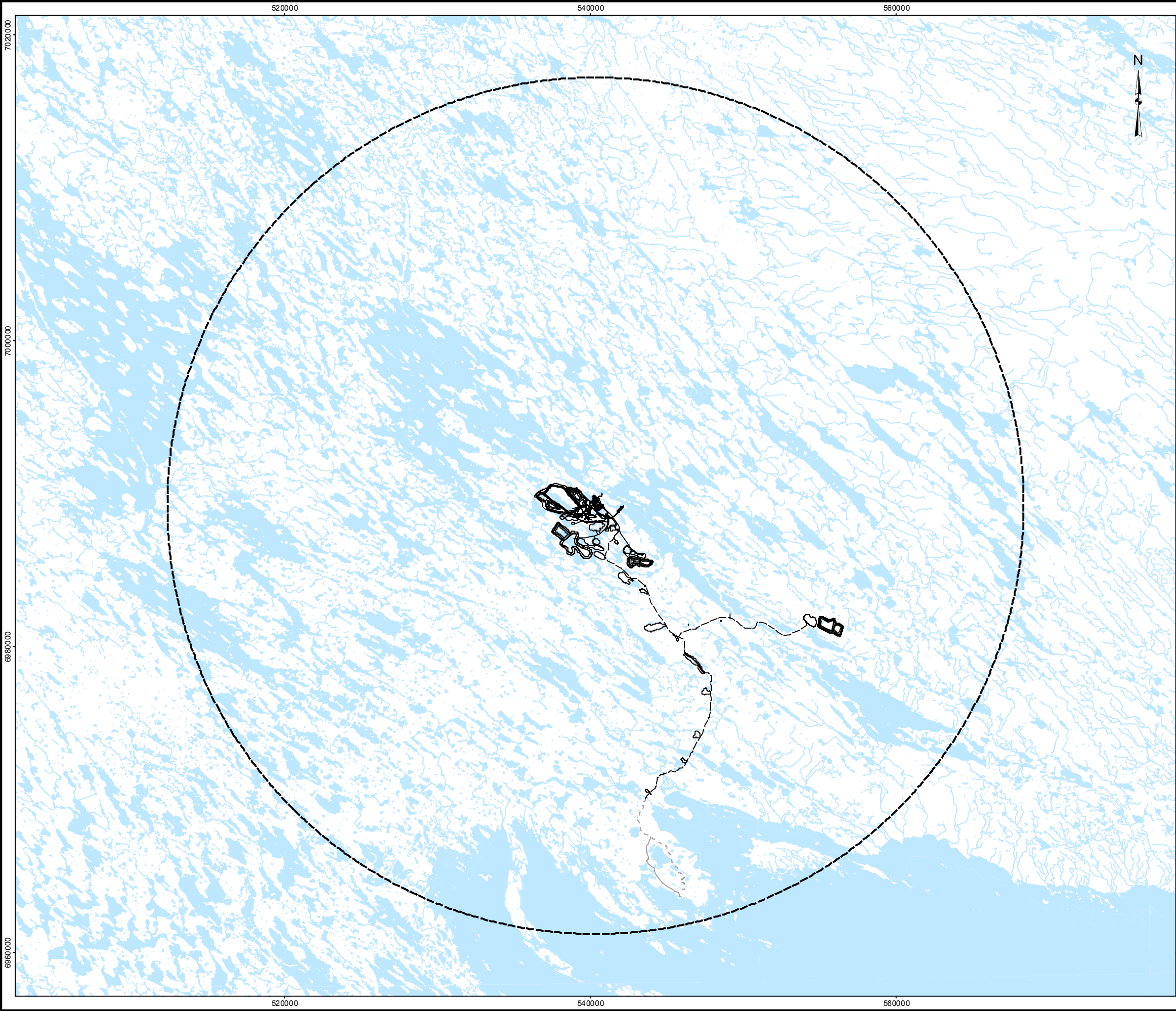


N:\Bur\_Graphics\Projects\2013\1428\13-1428-0007\GIS\Mapping\MXD\FEIS\Volume\_6\Main\_Volume\Figure\_6.1-2\_Regional\_Study\_Area\_Terrestrial.mxd



LEGEND

Regional Study Area (RSA)

Proposed Project Infrastructure

All-weather Access Road (AWAR)

Road - New

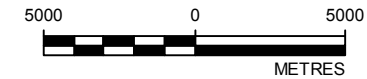
Road - Existing

Watercourse


Waterbody

REFERENCE

Base data obtained from Agnico Eagle Mines Limited (AEM).  
Datum: NAD 83 Projection: UTM Zone 15



PROJECT




AGNICO EAGLE

AGNICO EAGLE MINES LIMITED  
MELIADINE GOLD PROJECT  
NUNAVUT

TITLE

REGIONAL STUDY AREA



PROJECT NO. 10-1373-0076			FILE No.	
DESIGN	LY	09 Nov. 2012	SCALE AS SHOWN	REV. 0
GIS	CDB	09 Nov. 2012		
CHECK	DW	17 Jan. 2013		
REVIEW	DW	17 Jan. 2013		

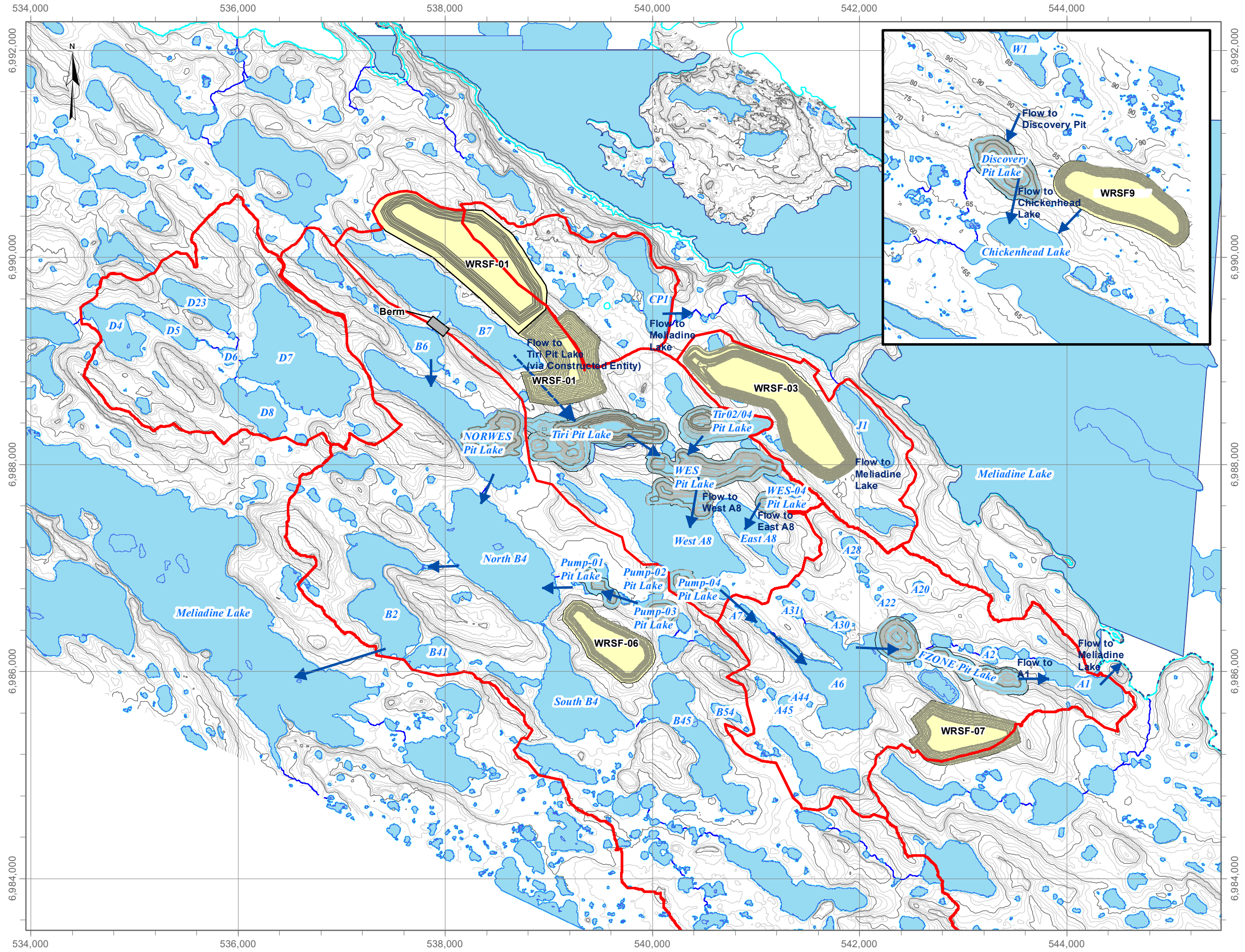
FIGURE 6.1-2

## **Appendix H: End of Operations and Post-Closure General Site Layout**









### LEGEND

- Prediction Node Catchment
- Reclaimed Mine Infrastructure
- Waterbody
- 5m Contour
- 1m Contour

Coordinate System: NAD 1983 UTM Zone 15N  
Projection: Transverse Mercator  
Datum: North American 1983  
Units: Meter

1:35,000

0 1 2 Km

DATE SAVED:	Jan 16, 2024
DRAWN BY:	GM
REVIEWED:	SJ
VERSION:	1

CLIENT:

**AGNICO EAGLE**

**LORAX ENVIRONMENTAL**

PROJECT:

**Meliadine Mine  
WB/WQM**

TITLE:

**Post-Closure  
Flow Paths**

PROJECT #:	A667-3	FIGURE:	A.5
------------	--------	---------	-----



## **Appendix I: Closure Integrated Schedule**

Component	Description	Operation Stage (Progressive Reclamation)												Active Closure Stage								Post-Closure Stage											
		Yr -4 2020	Yr -3 2021	Yr -2 2022	Yr -1 2023	Yr 1 2024	Yr 2 2025	Yr 3 2026	Yr 4 2027	Yr 5 2028	Yr 6 2029	Yr 7 2030	Yr 8 2031	Yr 9 2032	Yr 10 2033	Yr 11 2034	Yr 12 2035	Yr 13 2036	Yr 14 2037	Yr 15 2038	Yr 16 2039	Yr 17 2040	Yr 18 2041	Yr 19 2042	Yr 20 2043	Yr 21 2044	Yr 22 2045	Yr 23 2046	Yr 24 2047	Yr 25 2048			
Machinery, Mobile Equipment and Containers (Sea Cans)	Decommission machinery and equipment and ship off-site (leaving only on-site equipment required for closure and post-closure activities).																																
	Mobilization of demolition shear that will be required for buildings and facilities demolition during active closure phase.																																
	Remove equipment used for closure activities (e.g., trucks, backhoes, etc.).																																
	Remove equipment used for long-term maintenance (e.g., backhoes).																																
	Containers (sea cans) off-site demobilization. <sup>a</sup>									Progressive demobilization																							
Underground Mine Workings	Passive flooding (groundwater seepage).													Passive flooding																			
	Decommission of surface openings as needed.																																
	Underground backfill.																																
	Flooding of UG mine with saline water from SP6																																
Open Pits	Active flooding from Meliadine Lake.													Active flooding																			
	Place warning signs around Open Pits perimeter and replace as needed, construct rock berm(s).																																
	Pump and piping decommissioning after open pits flooding.																																
TSF	Rockfill placement along slope (erosion and thermal protection).	Progressive reclamation																															
	Cover placement (soil and rockfill).	Progressive reclamation																															
WRSF	Regrading and contouring of the borrow area of WRSF 1																																
	Cover placement (rockfill) at WRSF 9												Progressive reclamation																				
Mine Infrastructure and Support Buildings	Decommission buildings, facilities, pads and re-grade areas as needed.																																
	Decommission on site roads																																
Meliadine Lake Pumping System	Decommission pumping system.																																
Water Management Facilities	Breach dikes / berms and reclaim channel and pond areas.																																
	Decommission of treated groundwater waterline and diffuser on the AWAR and waterline on Discovery Road																																
	Decomission water management facilities on site <sup>b</sup>																																
	Decommission WTP and Meliadine Lake effluent diffuser. <sup>b</sup>																																
Off-site Facilities	Decommission floating dock, tank farm and laydown pad at Rankin Inlet (Itivia Harbour).																																
AWAR and Quarries	Decommission AWAR, Discovery and Bypass road.																																
	Quarries reclamation. <sup>c</sup>													Progressive reclamation																			
Long-term Care and Maintenance (assumed for 10 years after closure)																																	
Monitoring <sup>d</sup>														Active Closure					Post-Closure														

<sup>a</sup> Assuming that on-site containers will gradually be shipped off-site during operations.

<sup>b</sup> Assuming that the required water management facilities, WTP and Meliadine Lake effluent diffuser will be maintained for 3 years as a contingency after the closure stage and that site water quality is acceptable for direct discharge to the environment.

<sup>c</sup> Assuming progressive reclamation of quarries during operation when no longer required, except quarries that have been kept for road maintenance.

<sup>d</sup> Assumed for 10 years after operation; however, closure schedule depends on monitoring results. Activities will occur until water quality satisfies water licence criteria for direct discharge and/or access to the site is no longer required.

