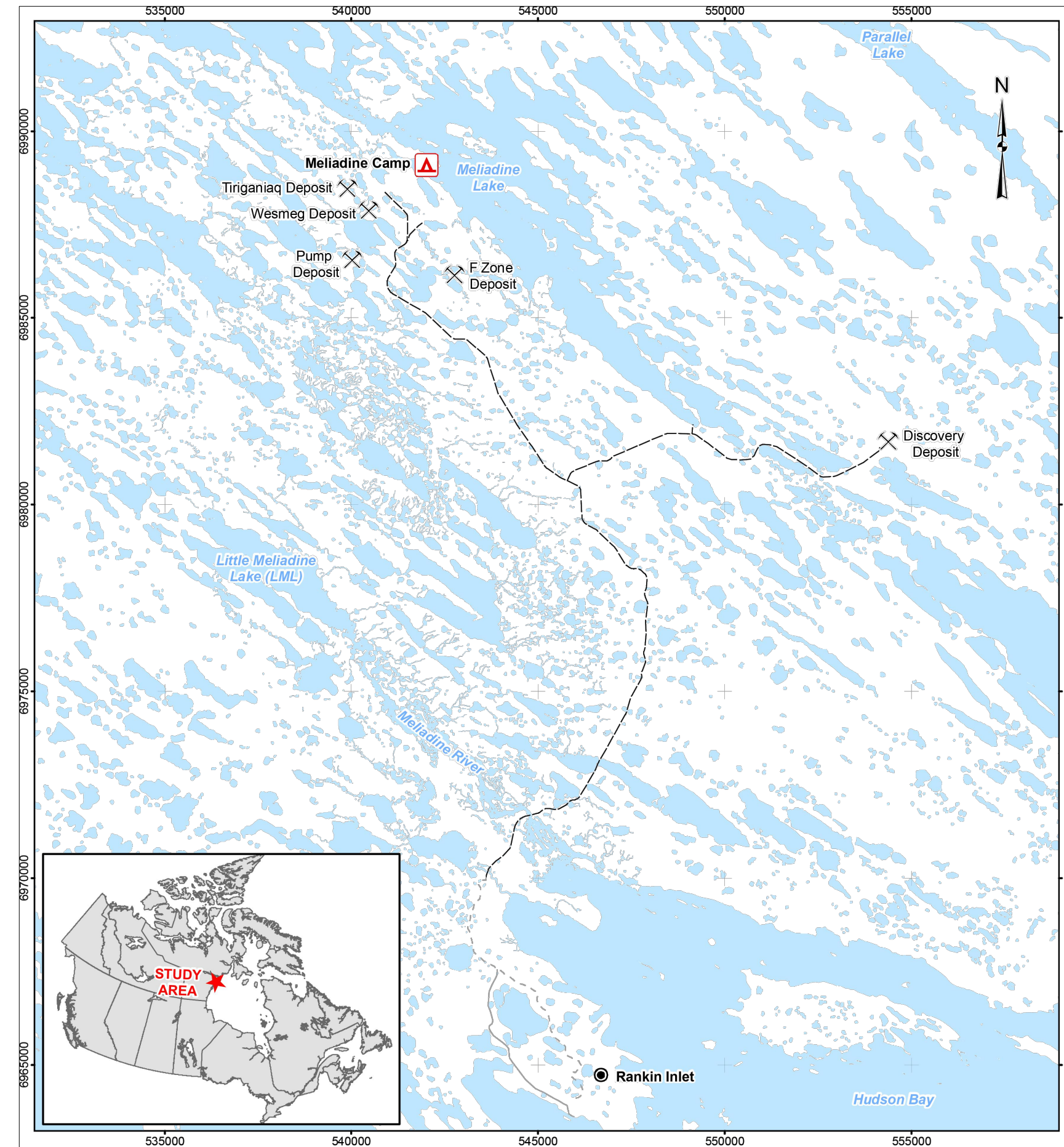
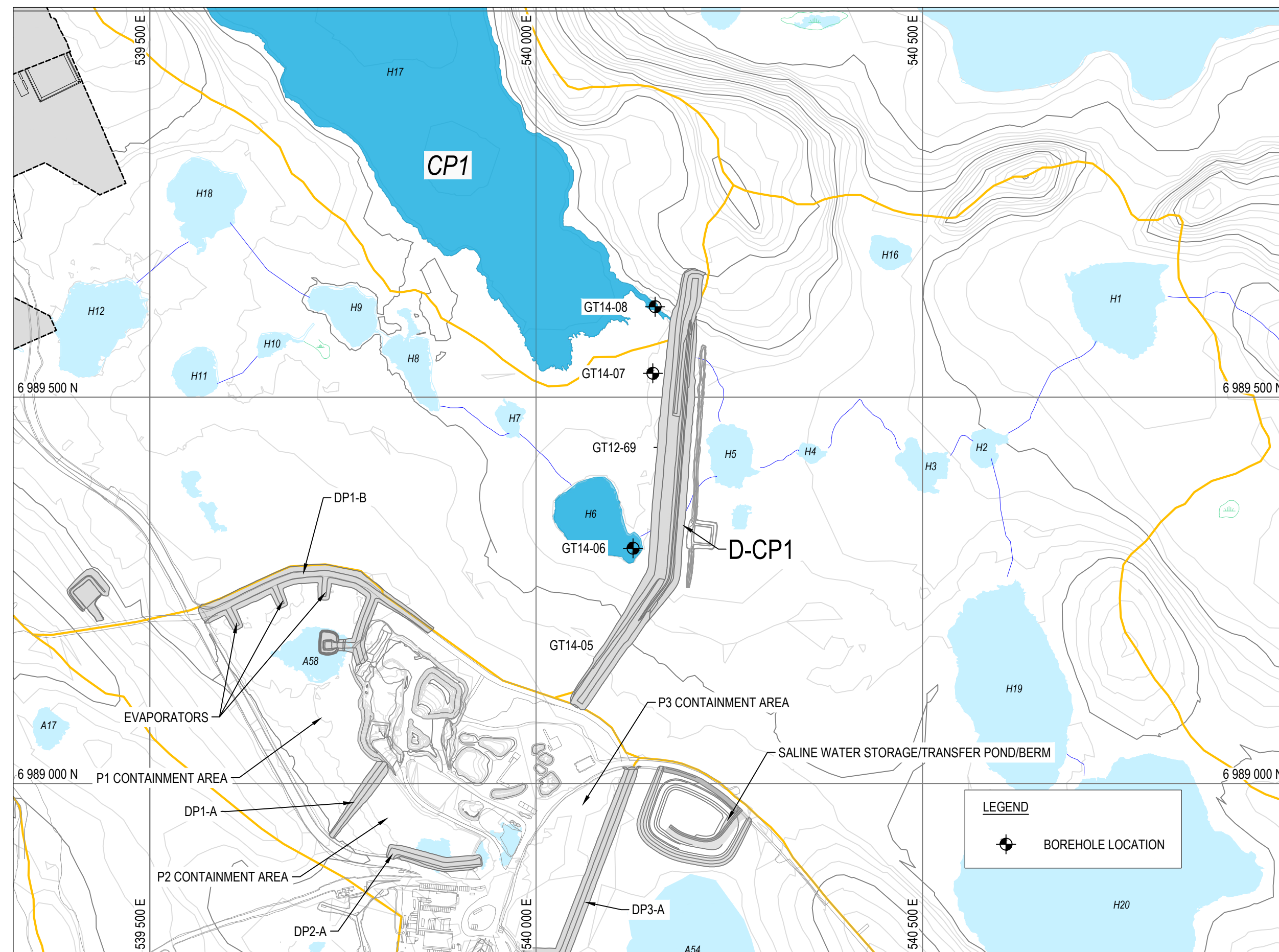


GENERAL SITE LOCATION
SCALE: 1:15,000



LOCATION MAP
SCALE: N.T.S.



D-CP1 SITE LOCATION
SCALE: 1:5,000

D-CP1 CONSTRUCTION DRAWING INDEX

DRAWING NUMBER	REV.	DRAWING TITLE
65-685-230-204	2	D-CP1 AS-BUILT GENERAL LOCATION PLAN
65-685-230-205	2	D-CP1 AS-BUILT KEY TRENCH AND DIKE LAYOUT PLAN
65-685-230-206	2	D-CP1 AS-BUILT PROFILES
65-685-230-207	2	D-CP1 AS-BUILT THERMAL COVER LAYOUT PLAN AND PROFILES
65-685-230-208	2	D-CP1 AS-BUILT TYPICAL SECTIONS AND QUANTITIES
65-685-230-209-001	2	D-CP1 AS-BUILT SECTIONS STATION 0+025 TO 0+200
65-685-230-209-002	2	D-CP1 AS-BUILT SECTIONS STATION 0+225 TO 0+400
65-685-230-209-003	2	D-CP1 AS-BUILT SECTIONS STATION 0+425 TO 0+575
65-685-230-210	2	D-CP1 AS-BUILT DOWNSTREAM WATER COLLECTION CHANNEL AND SUMP LAYOUT PLAN AND PROFILES
65-685-230-211	2	D-CP1 AS-BUILT INSTRUMENTATION PLAN AND DETAILS FOR GROUND TEMPERATURE CABLES
65-685-230-212	2	D-CP1 AS-BUILT INSTRUMENTATION PLAN AND DETAILS FOR GROUND TEMPERATURE CABLES AND SETTLEMENT SURVEY MONUMENT POINTS
65-685-230-213	2	D-CP1 AS-BUILT DOWNSTREAM WATER COLLECTION CHANNEL AND SUMP PROFILES AND INSTRUMENTATION DETAILS



NOTES GÉNÉRALES / GENERAL NOTES

PERMIT TO PRACTICE
TETRA TECH CANADA INC.
Signature: [Signature]
Date: Oct 14, 2017
PERMIT NUMBER: P 018
NT/NU Association of Professional Engineers and Geoscientists



L'INFORMATION CONTENUE EST LA PROPRIÉTÉ DE AGNICO EAGLE. TOUTES LES REPRODUCTIONS SONT INTERDITES SANS LAutorisation ÉCRITE D'AGNICO EAGLE. ALL INFORMATION CONTAINED HEREIN IS THE PROPERTY OF AGNICO EAGLE. ALL RIGHTS ARE RESERVED. REPRODUCTION WITHOUT WRITTEN PERMISSION IS STRICTLY PROHIBITED. TO CHECK AND ANY USE EXCEPT THAT FOR WHICH IT IS LOANED ARE PROHIBITED. © AGNICO EAGLE INC.

DESSINS EN RÉFÉRENCE / REFERENCE DRAWINGS

TITRE / TITLE	# DWG



REV.	DATE	DESCRIPTION	PAR/ÉTR.	APP.	CLIENT
2	2017-10-19	ISSUED FOR RECORD	WTH	NG	
1	2016-09-26	ISSUED FOR CONSTRUCTION	GZ	KJ	
0	2016-08-15	ISSUED FOR CONSTRUCTION	GZ	KJ	
D	2016-08-11	ISSUED FOR REVIEW	GZ	KJ	
A	2016-08-05	ISSUED FOR REVIEW	GZ	KJ	

REVISIONS

REV.	DATE	DESCRIPTION	PAR/ÉTR.	APP.	CLIENT
2	2017-10-19	ISSUED FOR RECORD	WTH	NG	
1	2016-09-26	ISSUED FOR CONSTRUCTION	GZ	KJ	
0	2016-08-15	ISSUED FOR CONSTRUCTION	GZ	KJ	
D	2016-08-11	ISSUED FOR REVIEW	GZ	KJ	
A	2016-08-05	ISSUED FOR REVIEW	GZ	KJ	

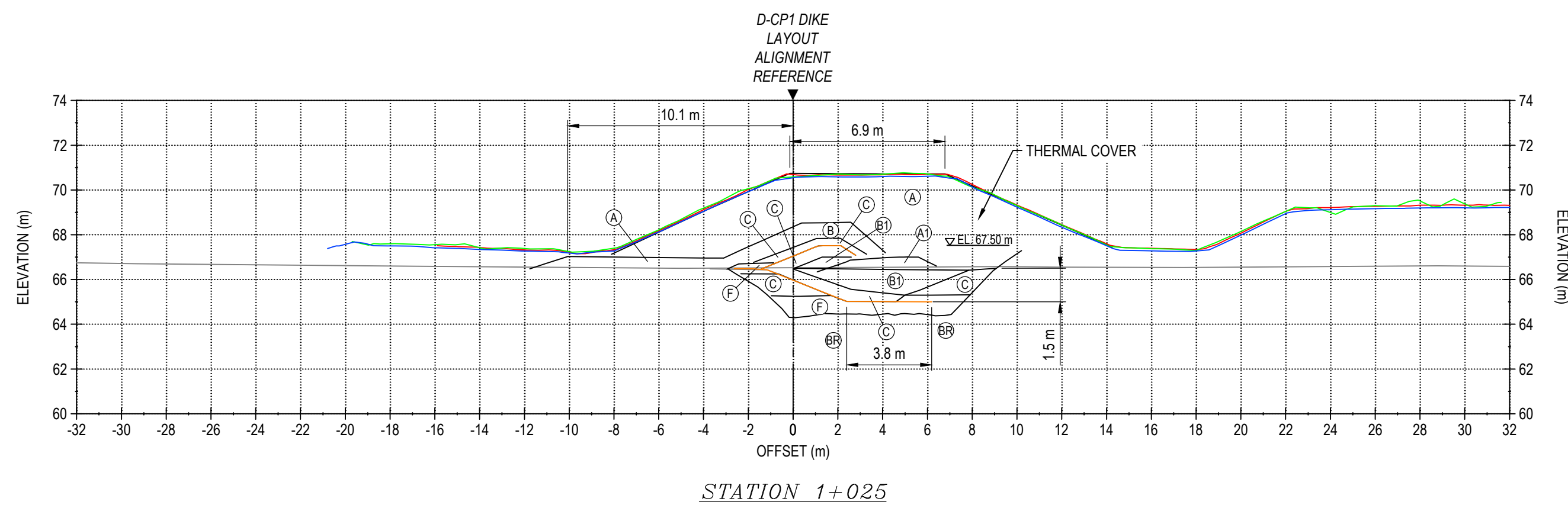
TITRE / TITLE
AGNICO EAGLE MELADIENE GOLD PROJECT

D-CP1 AS-BUILT
GENERAL LOCATION PLAN

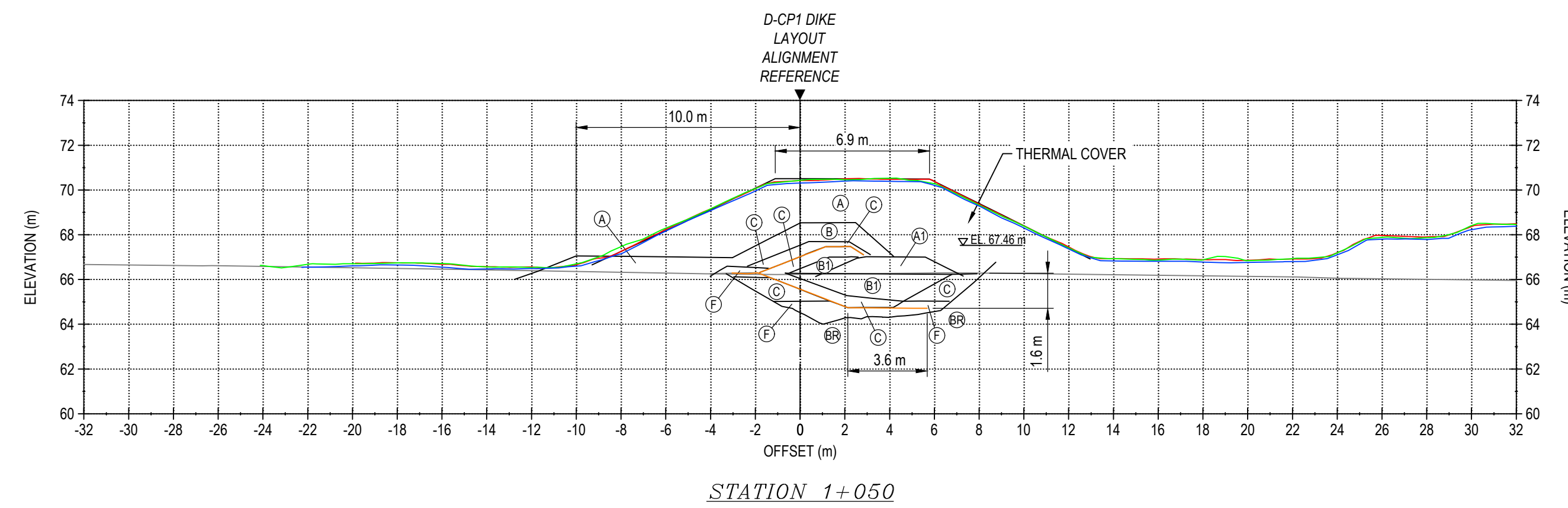
DESSINÉ PAR DRAWN BY	EL	DATE 2017-10-06
VÉRIFIÉ PAR CHECKED BY	WTH	2017-10-06
APPROUVÉ PAR APPROVED BY	NG	2017-10-06
ÉCHELLE SCALE	AS SHOWN	DATE 2017-10-06

NO. DESSIN
DRAWING NO. 65-685-230-204

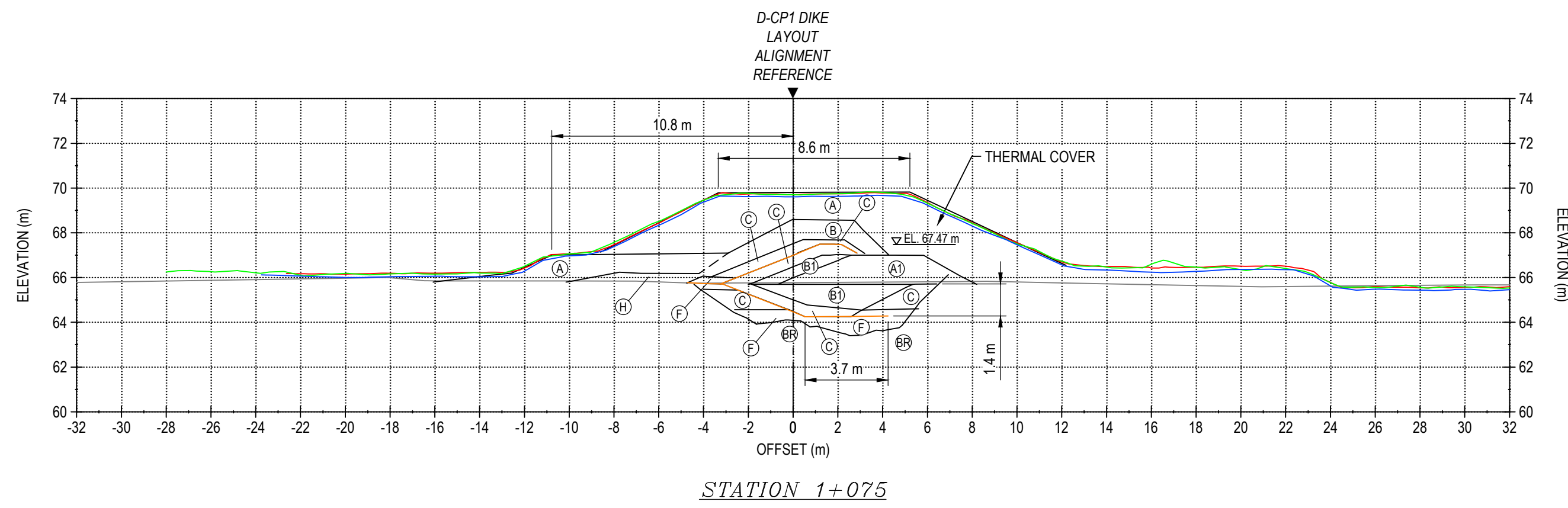
NO. PROJET PROJECT NO.	REVISION	FEUILLE / SHEET
6515	2	1 / 12



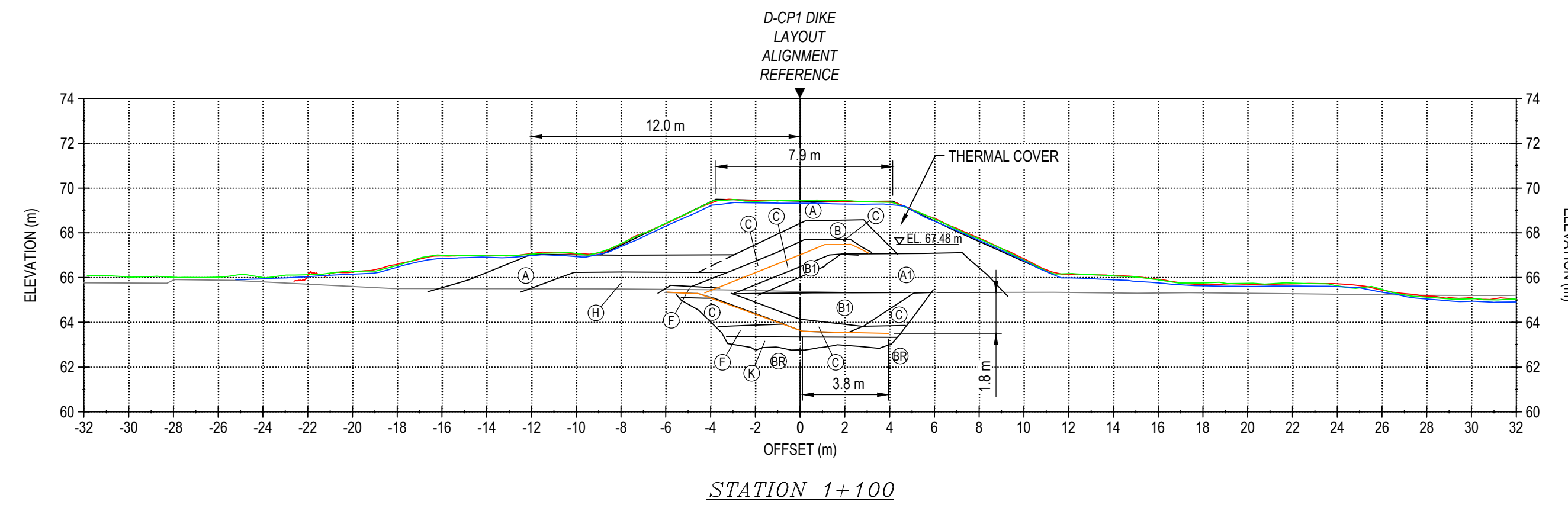
STATION 1+025



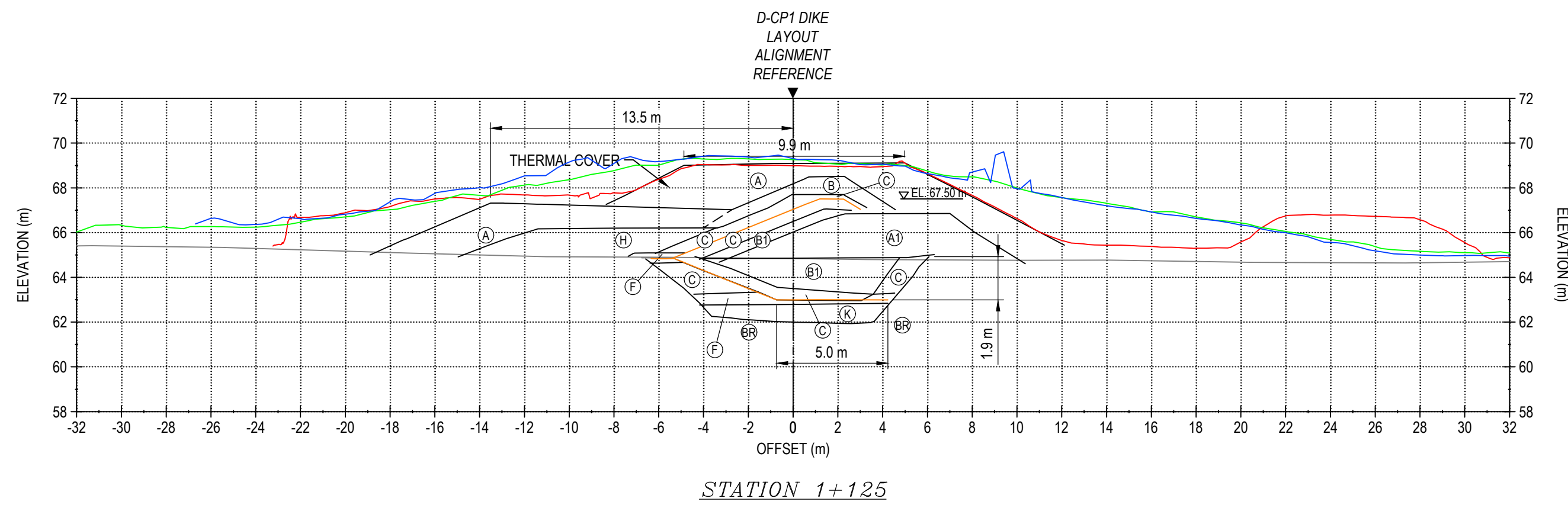
STATION 1+050



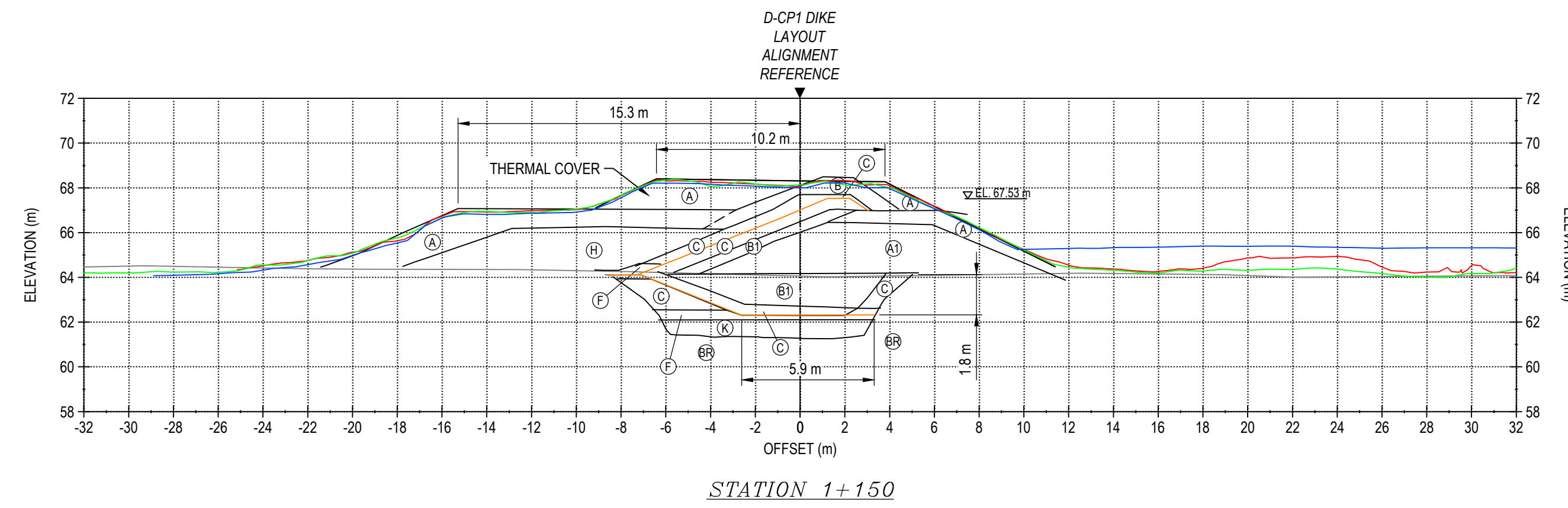
STATION 1+075



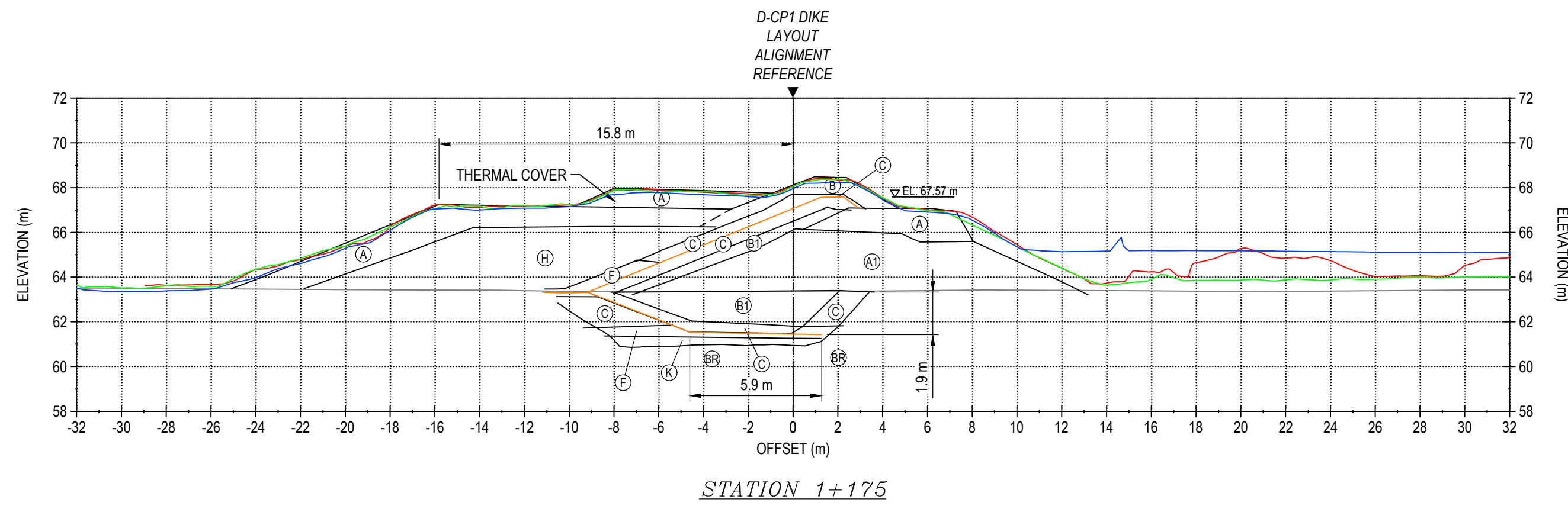
STATION 1+100



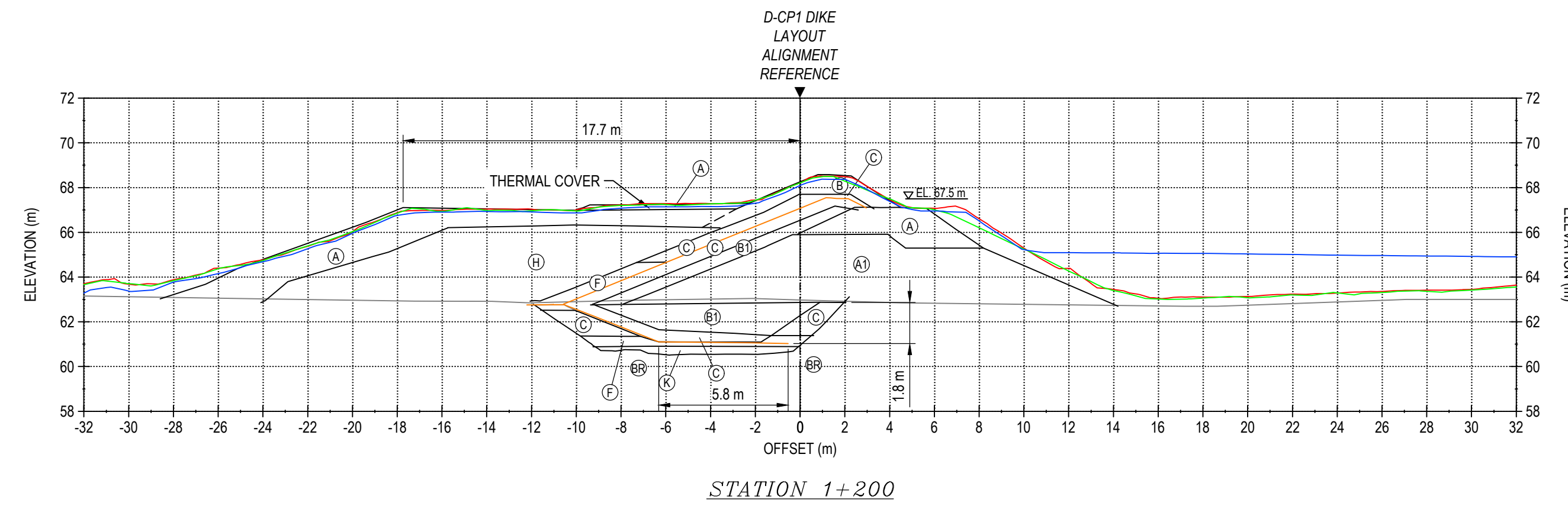
STATION 1+125



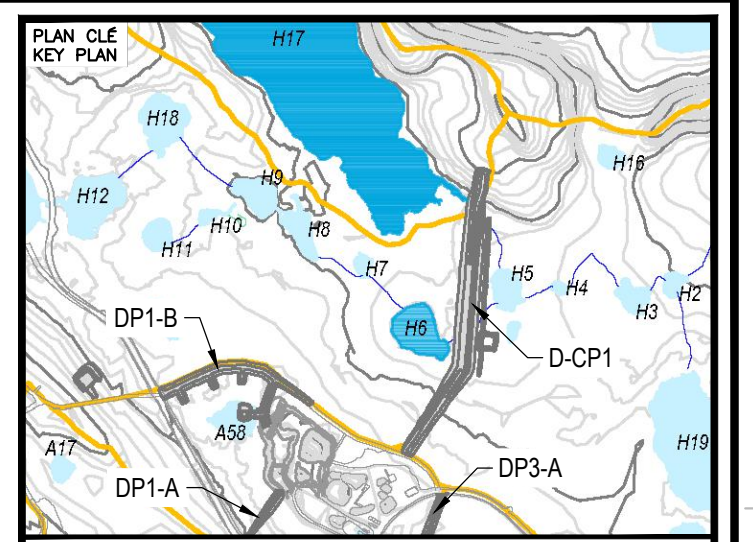
STATION 1+150



STATION 1+175



STATION 1+200



NOTES GÉNÉRALES / GENERAL NOTES

- LEGEND**
- (A) RUN-OF-MINE ROCKFILL (600 mm MINUS) IN DIKE UPSTREAM AND FOR THERMAL COVER
 - (A1) RUN-OF-MINE ROCKFILL (600 mm MINUS) IN DIKE DOWNSTREAM
 - (B) TRANSITION ROCKFILL (150 mm MINUS)
 - (B1) TRANSITION ROCKFILL (150 mm MINUS)
 - (C) GRANULAR FILL OR ESKER SAND (20 mm MINUS)
 - (F) BENTONITE-AUGMENTED MATERIAL (MIXTURE OF BENTONITE AND TYPE C MATERIAL)
 - (H) ESKER SAND AND GRAVEL (75 mm MINUS)
 - (K) NEARLY-SATURATED BACKFILL (20 mm MINUS)
- DASHED LINES REFER TO NO AS-BUILT DATA BUT ESTIMATED BASED ON FIELD VISUAL OBSERVATION
- (BB) BEDROCK
- 2022 AS-BUILT SCAN
— 2023 AS-BUILT SCAN
— 2025 AS-BUILT SCAN

L'INFORMATION D'INGÉNIEUR EST LA PROPRIÉTÉ DE AGNICO EAGLE LTD. ELLE N'EST RETOURNÉE QU'À AGNICO EAGLE LTD. SI VOUS AVEZ DES QUESTIONS SUR LES DROITS D'USAGE, VOUS POUVEZ CONTACTER AGNICO EAGLE LTD. À L'ADRESSE SUIVANTE: AGNICO EAGLE LTD., 1000 AVENUE DE LA SAISON D'ÉTÉ, SHERBROOKE, QUÉBEC, CANADA J1M 0A8. TEL: (819) 576-5100. FAX: (819) 576-5101. WWW.AGNICOEAGLE.COM

DESSINS EN RÉFÉRENCE / REFERENCE DRAWINGS

TITRE / TITLE	#	DMC



REV.	DATE	DESCRIPTION	PAR/ÉVI	APP.	CLIENT
2	2017-10-19	ISSUED FOR RECORD	WTH	NG	
1	2016-09-24	ISSUED FOR CONSTRUCTION	GZ	KJ	
0	2016-08-16	ISSUED FOR CONSTRUCTION	GZ	KJ	
B	2016-08-11	ISSUED FOR REVIEW	GZ	KJ	
A	2016-08-05	ISSUED FOR REVIEW	GZ	KJ	

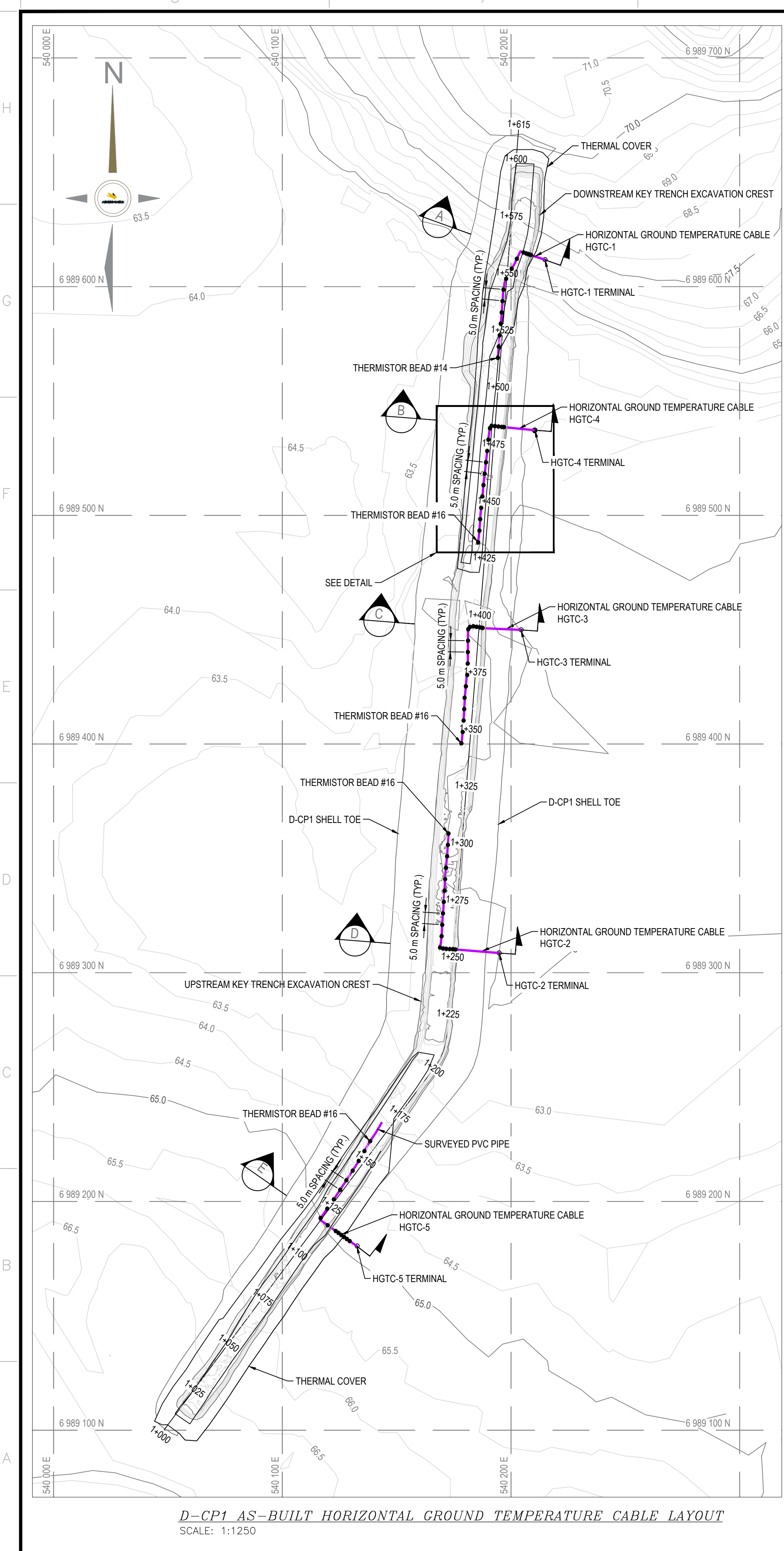
REVISIONS

TITRE / TITLE
AGNICO EAGLE MELIADINE GOLD PROJECT

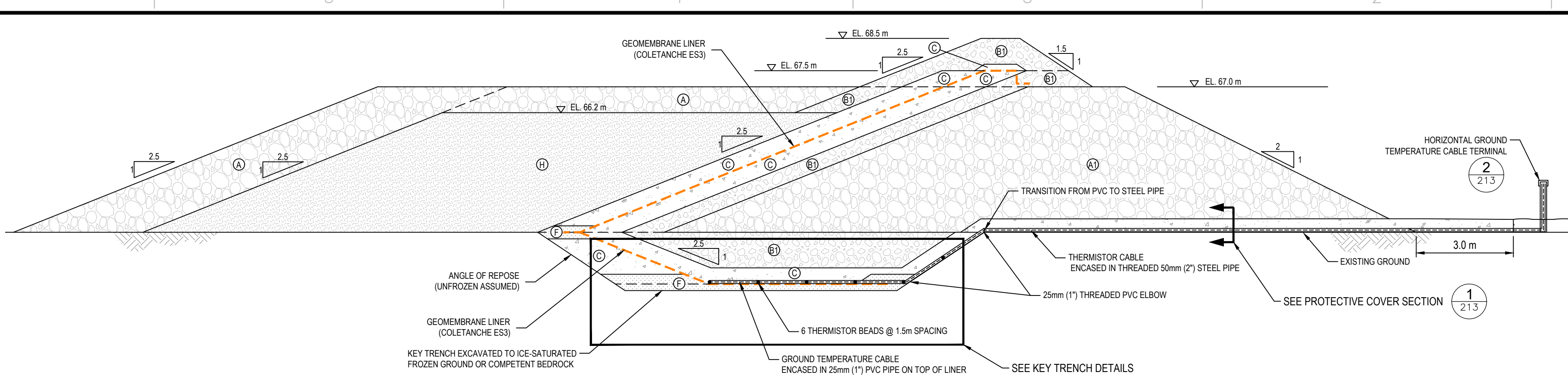
D-CP1 AS-BUILT SECTIONS
STATION 1+025 TO 1+200

DESSINÉ PAR DRAWN BY	EL	DATE DATE	2017-10-06
VÉRIFIÉ PAR CHECKED BY	WTH	DATE DATE	2017-10-06
APPROUVÉ PAR APPROVED BY	NG	DATE DATE	2017-10-06
ÉCHELLE SCALE	1:200	DATE DATE	2017-10-06

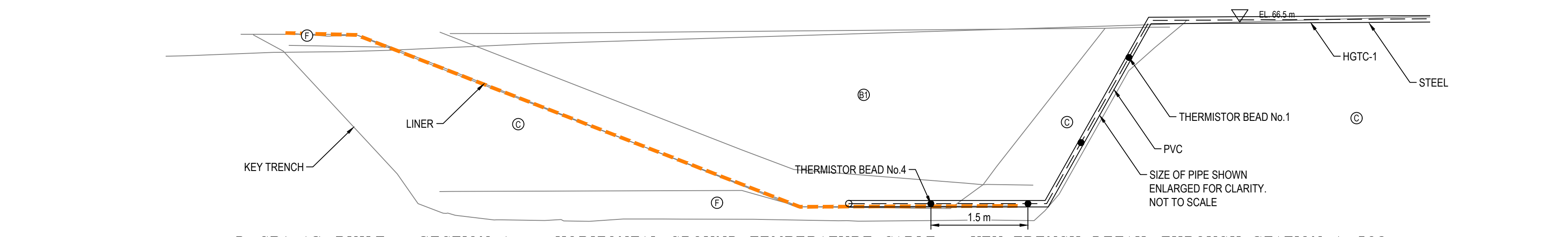
NO. DESSIN DRAWING NO.	65-685-230-209-001		
NO. PROJET PROJECT NO.	6515	REVISION	FEUILLE / SHIT
		2	6 / 12



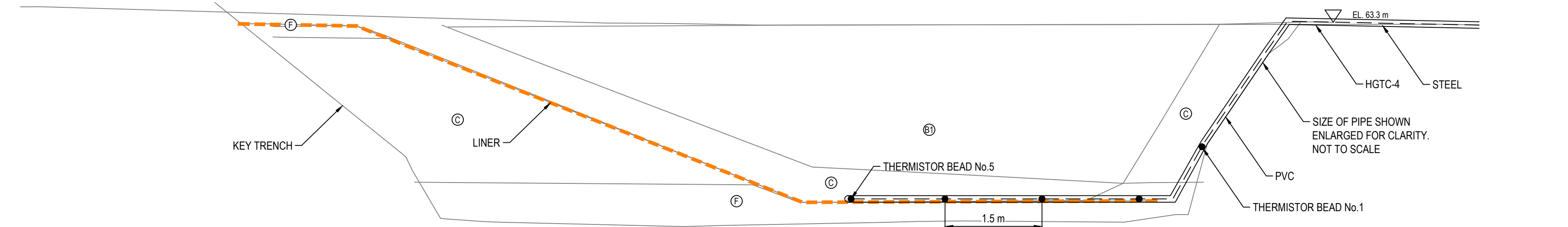
D-CP1 AS-BUILT HORIZONTAL GROUND TEMPERATURE CABLE LAYOUT
SCALE: 1:1250



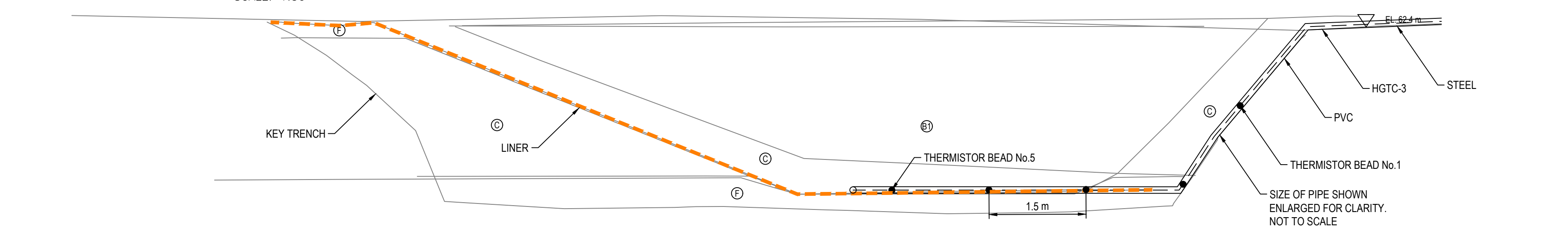
D-CP1 HORIZONTAL GROUND TEMPERATURE CABLE - DESIGN TYPICAL SECTION
SCALE: 1:100



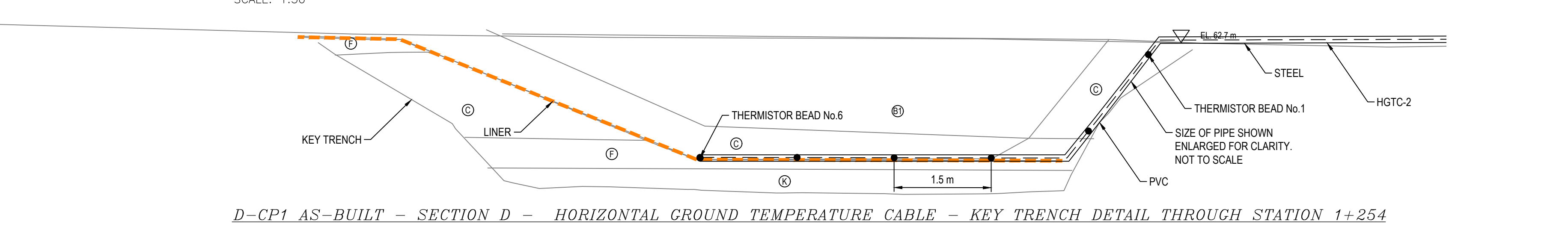
D-CP1 AS-BUILT - SECTION A - HORIZONTAL GROUND TEMPERATURE CABLE - KEY TRENCH DETAIL THROUGH STATION 1+562
SCALE: 1:50



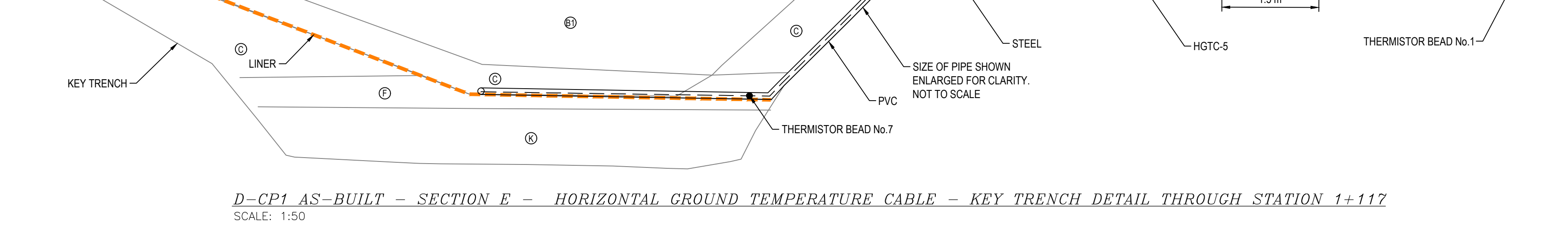
D-CP1 AS-BUILT - SECTION B - HORIZONTAL GROUND TEMPERATURE CABLE - KEY TRENCH DETAIL THROUGH STATION 1+482
SCALE: 1:50



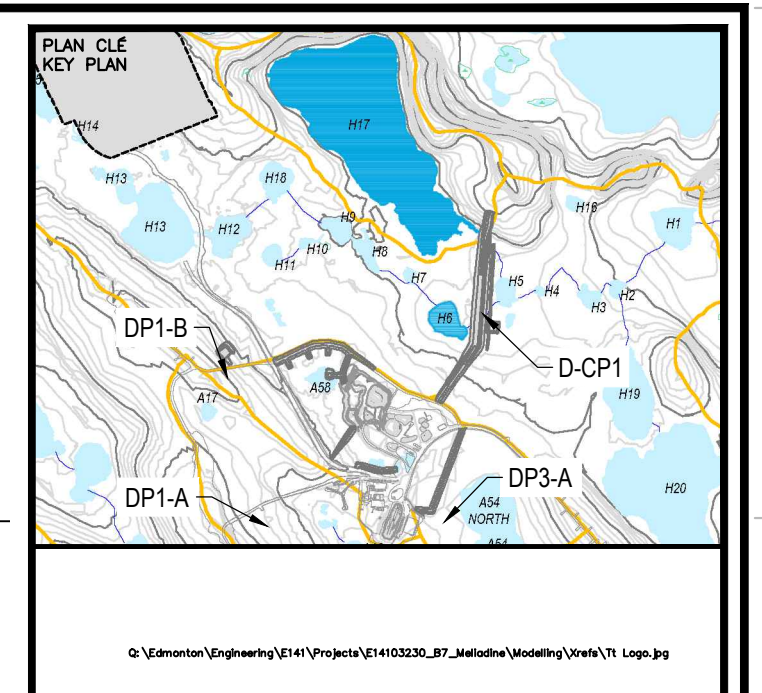
D-CP1 AS-BUILT - SECTION C - HORIZONTAL GROUND TEMPERATURE CABLE - KEY TRENCH DETAIL THROUGH STATION 1+394
SCALE: 1:50



D-CP1 AS-BUILT - SECTION D - HORIZONTAL GROUND TEMPERATURE CABLE - KEY TRENCH DETAIL THROUGH STATION 1+254
SCALE: 1:50



D-CP1 AS-BUILT - SECTION E - HORIZONTAL GROUND TEMPERATURE CABLE - KEY TRENCH DETAIL THROUGH STATION 1+117
SCALE: 1:50



NOTES GÉNÉRALES / GENERAL NOTES

- LEGEND**
- Ⓐ RUN-OF-MINE ROCKFILL (600 mm MINUS) IN DIKE UPSTREAM AND FOR THERMAL COVER
 - Ⓑ RUN-OF-MINE ROCKFILL (600 mm MINUS) IN DIKE DOWNSTREAM
 - Ⓒ TRANSITION ROCKFILL (150 mm MINUS)
 - Ⓓ TRANSITION ROCKFILL (150 mm MINUS)
 - Ⓔ GRANULAR FILL OR ESKER SAND (20 mm MINUS)
 - Ⓕ BENTONITE-AUGMENTED MATERIAL (MIXTURE OF BENTONITE AND TYPE C MATERIAL)
 - Ⓖ ESKER SAND AND GRAVEL (75 mm MINUS)
 - Ⓗ NEARLY-SATURATED BACKFILL (20 mm MINUS)

PERMIT TO PRACTICE
TETRA TECH CANADA INC.
Signature: [Signature]
Date: Oct 19, 2017
PERMIT NUMBER: P 018
NT/NU Association of Professional Engineers and Geoscientists

TEL QUE CONSTRUIT AS BUILT
ANNEXE CABLE
DATE: 2017-10-19

L'INFORMATION CONTENUE EST LA PROPRIÉTÉ DE AGNICO EAGLE LTD. ET DOIT ÊTRE RETENUE SUR DEVIANT. TOUTE AUTRISATION DOIT ÊTRE OBTENUE DE AGNICO EAGLE LTD. AVANT D'ÊTRE REPRODUE, COPIÉE, IMPRIMÉE, OU COMMUNIQUÉE EN PUBLIC. AGNICO EAGLE LTD. NE GARANTIT PAS LA PRÉCISION DES DONNÉES NI L'ADÉQUATION DE CE DOCUMENT POUR UN USAGE NON INTENDU. AGNICO EAGLE LTD. NE GARANTIT PAS LA PRÉCISION DES DONNÉES NI L'ADÉQUATION DE CE DOCUMENT POUR UN USAGE NON INTENDU. AGNICO EAGLE LTD. NE GARANTIT PAS LA PRÉCISION DES DONNÉES NI L'ADÉQUATION DE CE DOCUMENT POUR UN USAGE NON INTENDU.

DESSINS EN RÉFÉRENCE / REFERENCE DRAWINGS

TITRE / TITLE	# DWG



REV.	DATE	DESCRIPTION	PAR/EN	APP.	CLIENT
2	2017-10-19	ISSUED FOR RECORD	WTH	NG	
1	2016-09-24	ISSUED FOR CONSTRUCTION	GZ	KJ	
0	2016-08-19	ISSUED FOR CONSTRUCTION	GZ	KJ	
1	2016-08-11	ISSUED FOR REVIEW	GZ	KJ	
1	2016-08-09	ISSUED FOR REVIEW	GZ	KJ	

REVISIONS

TITRE / TITLE
AGNICO EAGLE MELIADNE GOLD PROJECT

D-CP1 AS-BUILT
INSTRUMENTATION PLAN AND DETAILS
FOR GROUND TEMPERATURE CABLES

DESSINÉ PAR DRAWN BY	DRG	DATE 2017-10-06
VÉRIFIÉ PAR CHECKED BY	GZ	2017-10-06
APPROUVÉ PAR APPROVED BY	KJ	2017-10-06
ÉCHELLE SCALE	AS SHOWN	DATE 2017-10-06

NO. DESSIN DRAWING NO.	65-685-230-211	
NO. PROJET PROJECT NO.	REVISION	Feuille / SHF
6515	2	10 / 12

North Elevation

📍 192°S (T) 📍 15 N 540164 6989457 ±4m ▲ 53m



D-CP1 - Photo 1: Dike D-CP1: Upstream face – some wave erosion evident from 2019/2020 high water level event, no change from previous years. Facing south.

South Elevation

📍 9°N (T) 📍 15 N 540166 6989480 ±4m ▲ 53m



D-CP1 - Photo 2: Dike D-CP1: Upstream face – some wave erosion evident from 2019/2020 high water level event, no change from previous years. Facing north.

South Elevation

☉ 342°N (T) ● 15 N 540154 6989285 ±4m ▲ 55m



D-CP1 - Photo 3: CP1: Upstream view of CP1- water level well managed. Facing north.

North Elevation

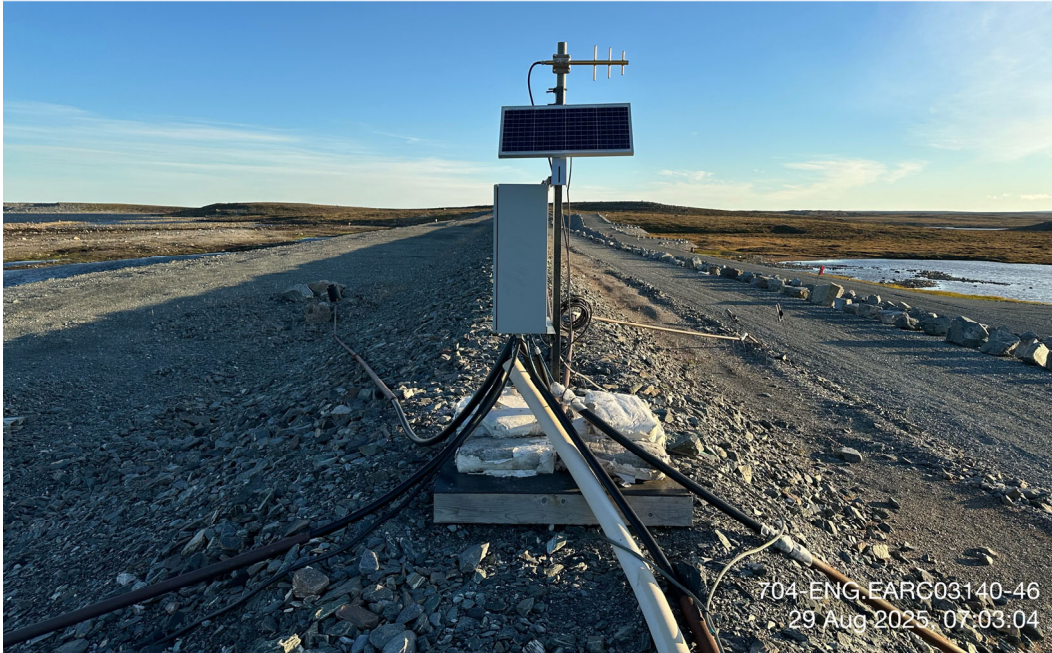
☉ 180°S (T) ● 15 N 540197 6989593 ±4m ▲ 56m



D-CP1 - Photo 4: Dike D-CP1: Dike crest view - downstream on left, upstream on right. Facing south.

South Elevation

☉ 350°N (T) ● 15 N 540176 6989335 ±4m ▲ 58m



704-ENG.EARC03140-46
29 Aug 2025, 07:03:04

D-CP1 - Photo 5: Dike D-CP1: Ground temperature cable housing and data collection system. Facing north.

North East Elevation

☉ 204°SW (T) ● 15 N 540158 6989351 ±4m ▲ 53m



704-ENG.EARC03140-46
29 Aug 2025, 07:03:47

D-CP1 - Photo 6: Dike D-CP1: Dike upstream crest - minor cracking, no change from previous years. Facing southwest.

North Elevation

☉ 182°S (T) ● 15 N 540200 6989501 ±4m ▲ 54m



704-ENG.EARC03140-46
29 Aug 2025, 07:19:37

D-CP1 - Photo 7: Dike D-CP1: Dike downstream toe berm view. Facing south.

South West Elevation

☉ 38°NE (T) ● 15 N 540202 6989467 ±4m ▲ 51m



704-ENG.EARC03140-46
29 Aug 2025, 07:20:50

D-CP1 - Photo 8: Dike D-CP1: Dike downstream runoff/seepage collection north ditch. Facing northeast.

North Elevation

📍 176°S (T) 📍 15 N 540211 6989414 ±39m ▲ 30m



704-ENG.EARC03140-46
29 Aug 2025, 07:23:38

D-CP1 - Photo 9: Dike D-CP1: Dike downstream runoff/seepage collection north ditch. Facing south.

North Elevation

📍 189°S (T) 📍 15 N 540202 6989284 ±4m ▲ 51m



704-ENG.EARC03140-46
29 Aug 2025, 07:27:12

D-CP1 - Photo 10: Dike D-CP1: Dike downstream runoff/seepage collection south ditch. Facing south.

South Elevation

☉ 7°N (T) ● 15 N 540208 6989285 ±4m ▲ 53m



704-ENG.EARC03140-46
29 Aug 2025, 07:27:00

D-CP1 - Photo 11: Dike D-CP1: Dike downstream collection sump. Facing north.

North Elevation

☉ 165°S (T) ● 15 N 540212 6989350 ±4m ▲ 48m



704-ENG.EARC03140-46
29 Aug 2025, 07:25:04

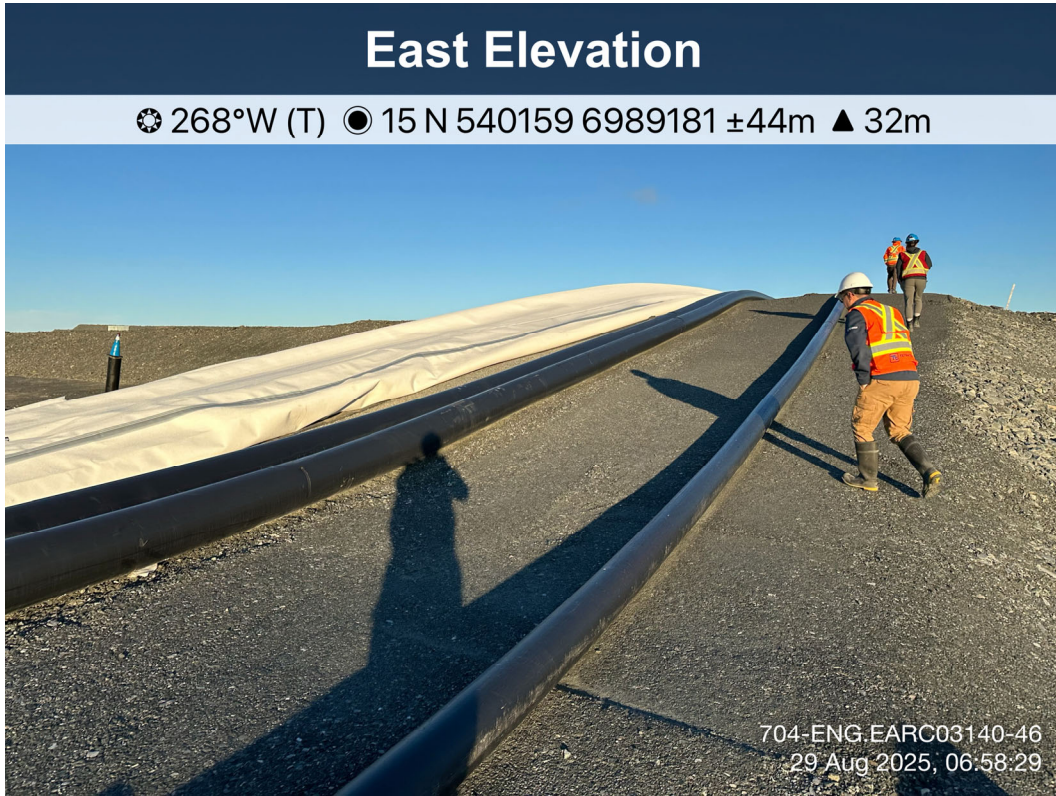
D-CP1 - Photo 12: Dike D-CP1: Dike downstream collection sump. Facing south.



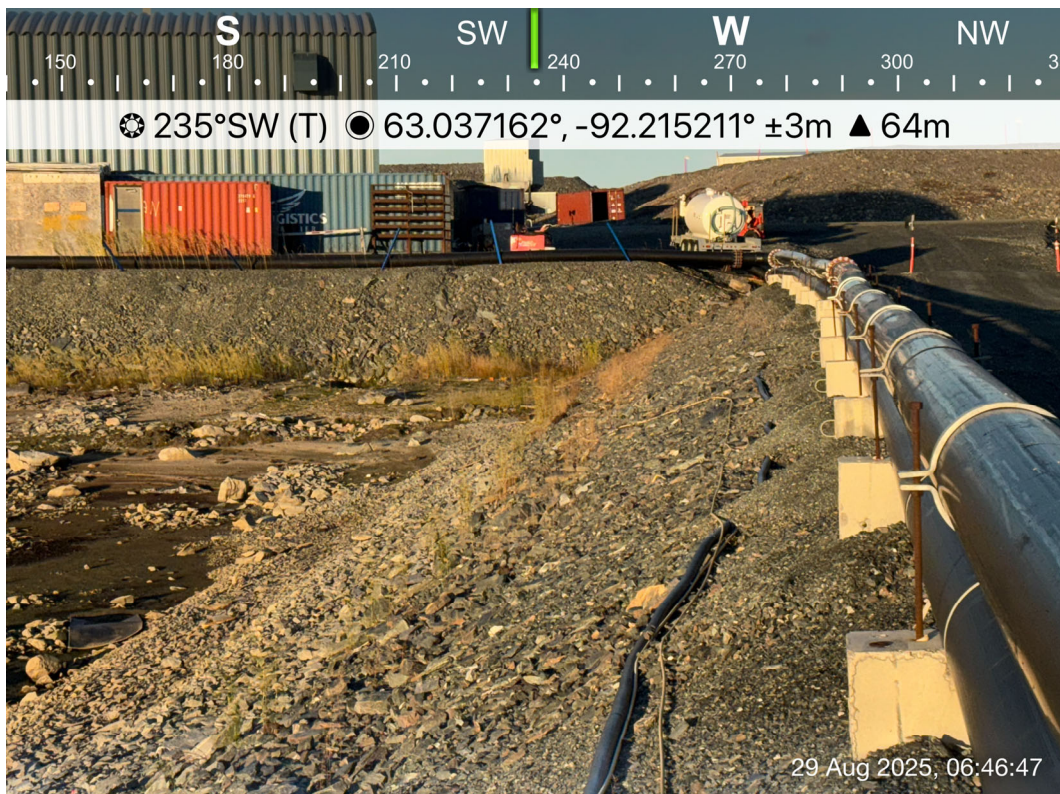
D-CP1 - Photo 13: Dike D-CP1: Downstream rockfill cover and collection ditch. Facing south.



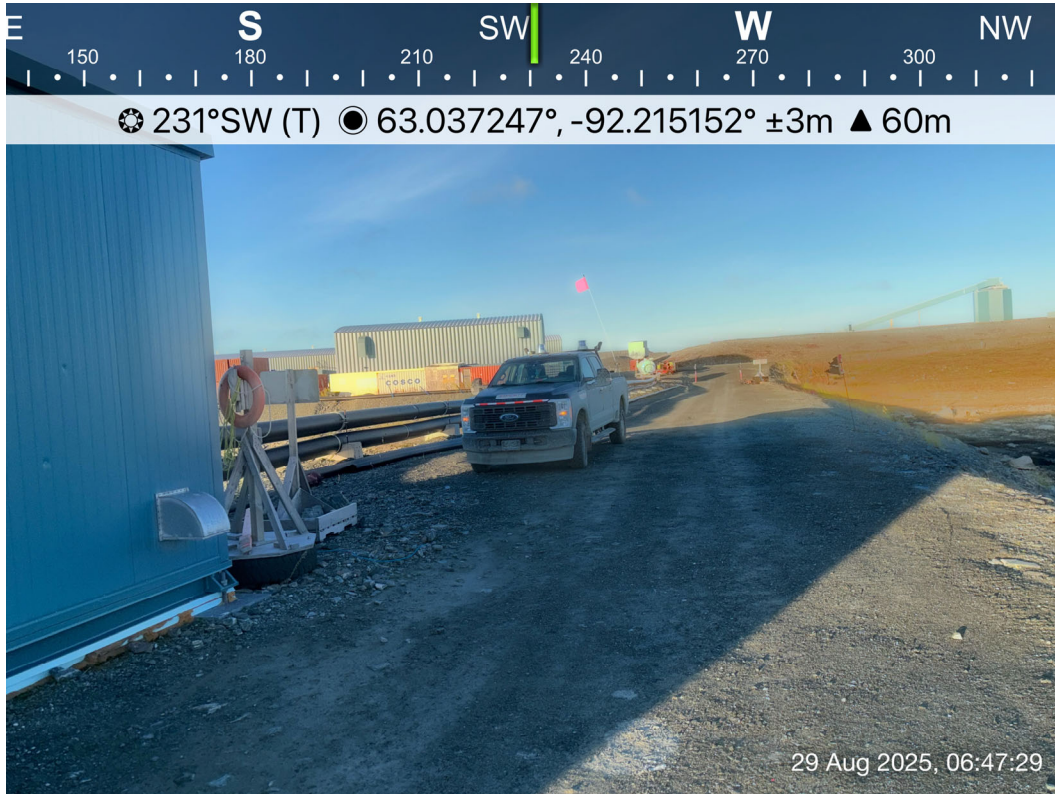
D-CP1 - Photo 14: Dike D-CP1: Pipelines crossing at Station 1+250 of Dike D-CP1. Facing northeast.



D-CP1 - Photo 15: Dike D-CP1: Pipeline crossing extension. Facing west.



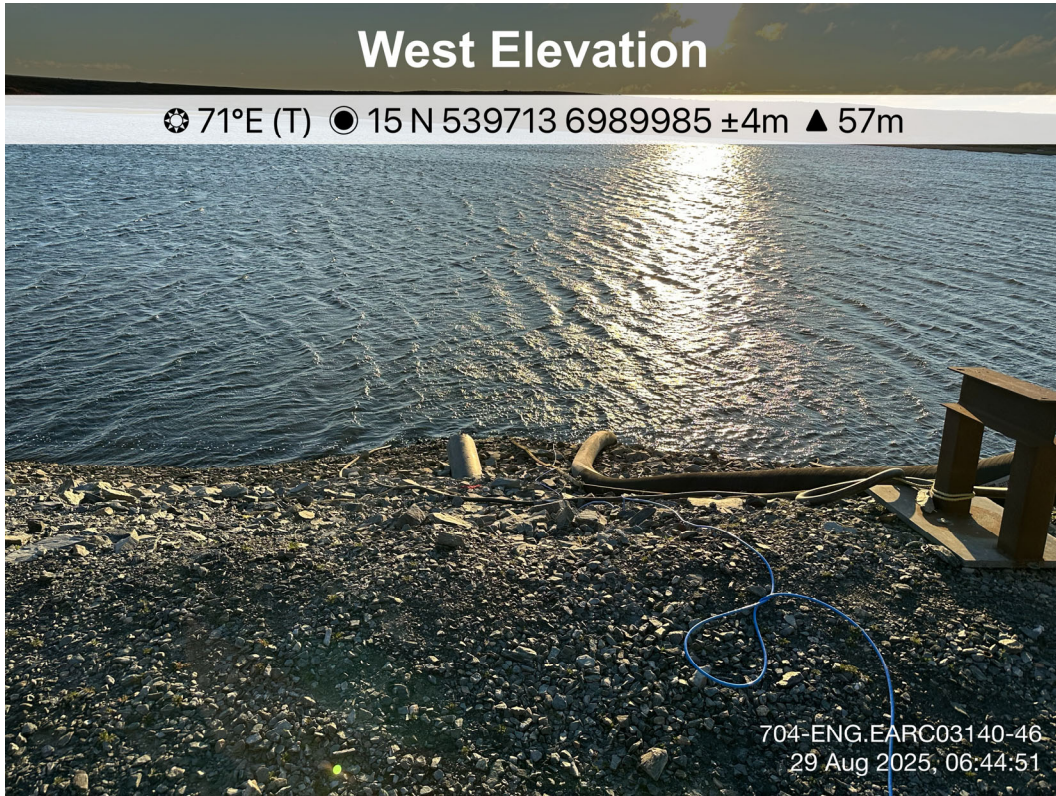
D-CP1 - Photo 16: Dike D-CP1: Jetty1 side slope. Facing southwest.



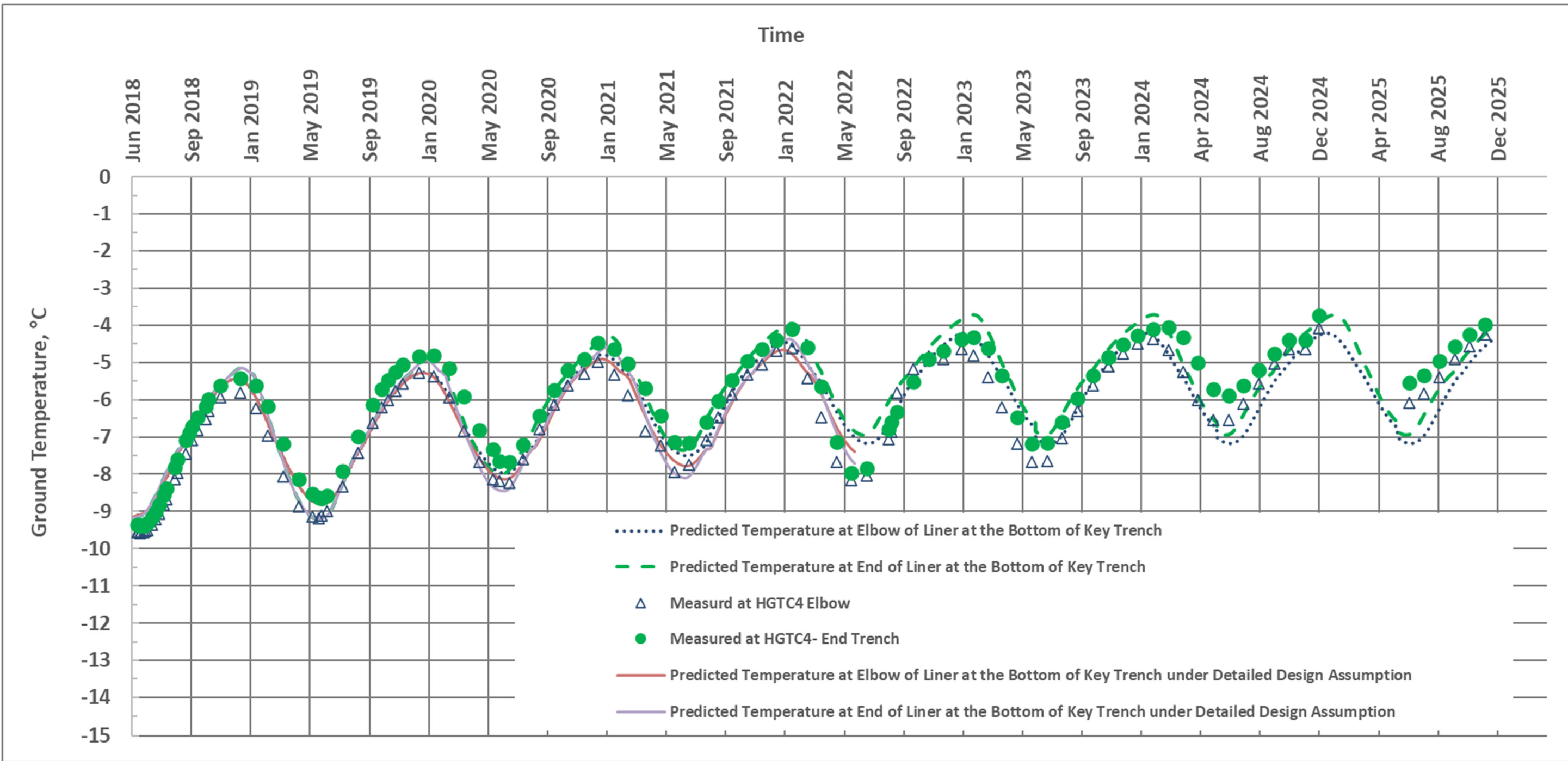
D-CP1 - Photo 17: Dike D-CP1: Pipelines on Jetty1. Facing southwest.



D-CP1 - Photo 18: Dike D-CP1: Jetty1 water intake. Facing southeast.



D-CP1 - Photo 19: Dike D-CP1: Jetty1 - side slope, minor erosion with similar conditions to the previous year. Facing east.



LEGEND

NOTES
BASED ON THERMAL
MODELLING RESULTS
UPDATED IN 2020

STATUS
ISSUED FOR USE

CLIENT



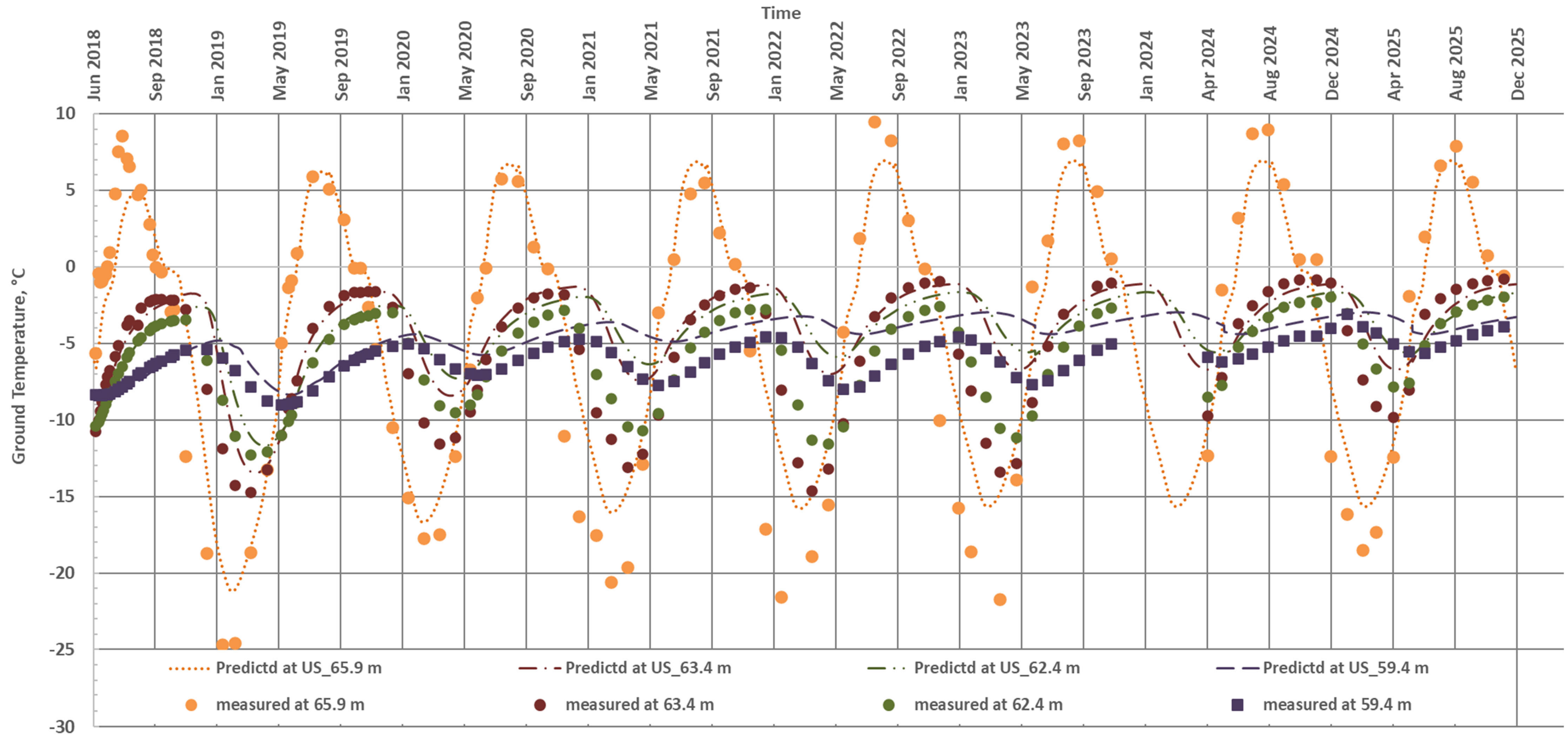
**2025 ANNUAL GEOTECHNICAL INSPECTION,
MELIADINE GOLD MINE, NU**

**D-CP1 Predicted and Actual Temperature with Time at
the Elbow and End of the Liner at the Bottom of Key
Trench for Thermal Update and Detailed Design
Condition**

PROJECT NO. ENG.EARC03140-39	DWN HX	CKD HX	APVD	REV
OFFICE EBA-EARC	DATE Jan. 2026			

Figure 1

D-CP1 VGTC-03



LEGEND

NOTES
BASED ON THERMAL
MODELLING RESULTS
UPDATED IN 2020

STATUS
ISSUED FOR USE

CLIENT



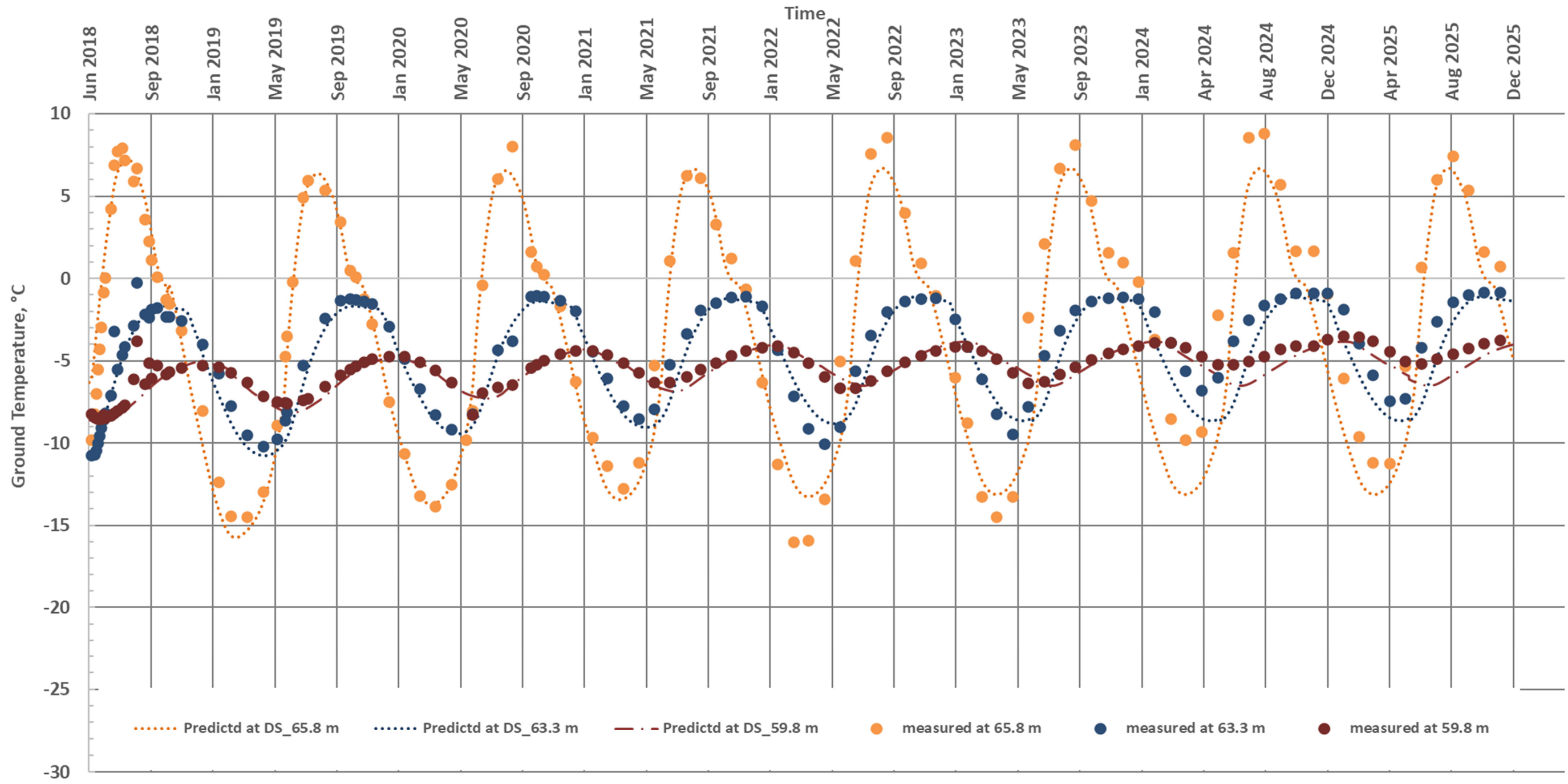
**2025 ANNUAL GEOTECHNICAL INSPECTION,
MELIADINE GOLD MINE, NU**

D-CP1 Temperature Comparison at VGTC3 (Upstream Side)

PROJECT NO. ENG.EARC03140-39	DWN HX	CKD HX	APVD	REV
OFFICE EBA-EARC	DATE Jan. 2025			

Figure 2

D-CP1 VGTC-04



LEGEND

NOTES
BASED ON THERMAL
MODELLING RESULTS
UPDATED IN 2020

STATUS
ISSUED FOR USE

CLIENT

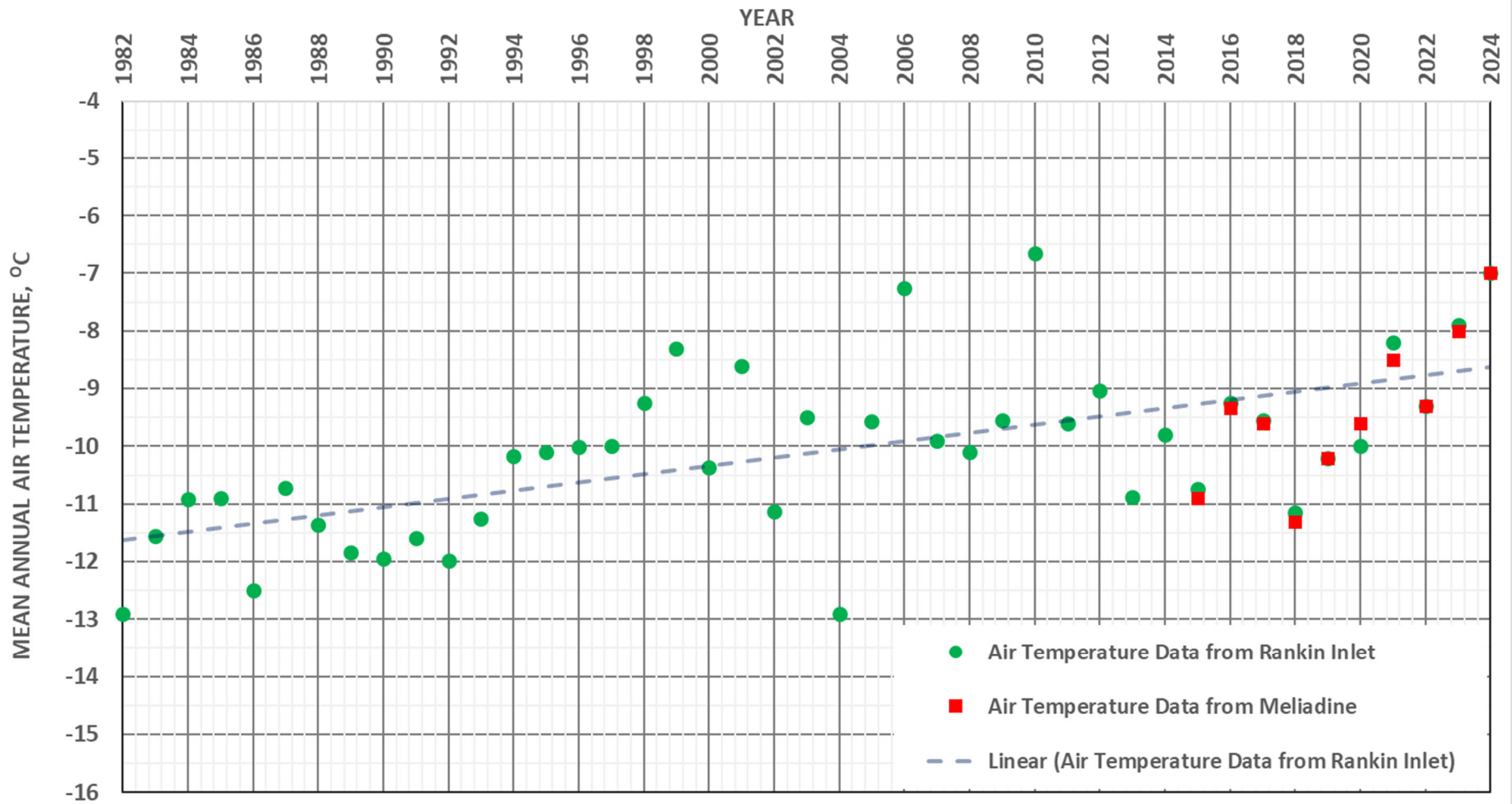


**2025 ANNUAL GEOTECHNICAL INSPECTION,
MELIADINE GOLD MINE, NU**

**D-CP1 Temperature Comparison at VGTC4
(Upstream Side)**

PROJECT NO. ENG.EARC03140-39	DWN HX	CKD HX	APVD	REV
OFFICE EBA-EARC	DATE Jan. 2025			

Figure 3



LEGEND

NOTES

STATUS
ISSUED FOR USE

CLIENT



AGNICO EAGLE

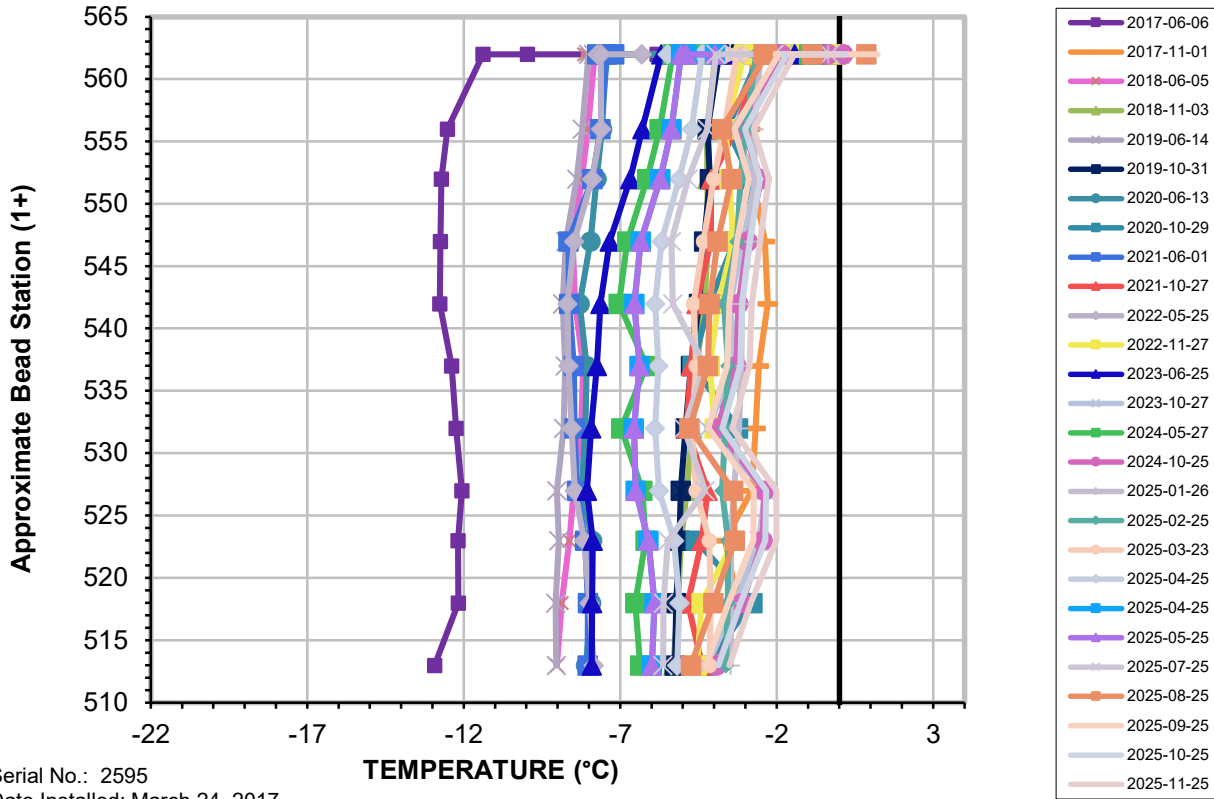


**2025 Annual Geotechnical Inspection,
Meliadine Gold Mine, NU
Mean Annual Air Temperatures
Rankin Inlet vs. Meliadine**

PROJECT NO. ENG.EARC03140-39	DWN HX	CKD HX	APVD	REV
OFFICE EBA-DM	DATE Jan. 2025			

Figure 4

Horizontal Ground Temperature Profil for Cable HGTC-01 Dike D-CP1



D-CP1 HGTC-1 (Bottom of Key Trench Only)

