

Address not found

📍 133°SE (T) 📍 15 N 539501 6989020 ±4m ▲ 71m



**Site Road -
Photo 9:**

Site Road: Overview of paste plant ramp. Facing southeast.

Address not found

📍 0°N (T) 📍 15 N 539711 6986948 ±4m ▲ 54m



**Site Road -
Photo 10:**

Site Road: Overview of the road to pump. Facing north.

South Elevation

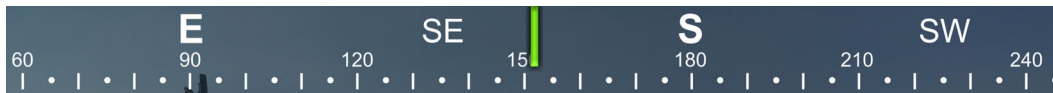
☀ 341°N (T) ● 15 N 539392 6989579 ±4m ▲ 64m



704-ENG.EARC03140-46
30 Aug 2025, 09:09:11

**Site Road -
Photo 11:**

Site Road: Overview of crusher pad ramp. Facing north.



☀ 152°SE (T) ● 63.034078°, -92.221904° ±4m ▲ 67m



30 Aug 2025, 09:10:33

**Site Road -
Photo 12:**

Site Road: Overview of crusher pad ramp. Facing southeast.



**Site Road -
Photo 13:**

Site Road: Overview of TSF access road culverts, ponding water between the TSF access road and the TSF. Facing west.



**Site Road -
Photo 14:**

Site Road: Overview of TSF access road culverts, crushed Culvert 18. Facing northeast.

APPENDIX P

BORROW SOURCES

East Elevation

☉ 257°W (T) ● 15 N 539479 6990282 ±4m ▲ 60m



704-ENG.EARC03140-46
28 Aug 2025, 16:12:37

Meliadine Esker Borrow Source: Meliadine esker borrow source overview. Facing west.
Photo 1:

North Elevation

☉ 192°S (T) ● 15 N 539516 6990264 ±6m ▲ 61m



704-ENG.EARC03140-46
28 Aug 2025, 16:11:41

Meliadine Esker Borrow Source: Meliadine esker borrow source overview. Facing south.
- Photo 2:

South East Elevation

☉ 314°NW (T) ● 15 N 539101 6990448 ±3m ▲ 69m



704-ENG.EARC03140-46
28 Aug 2025, 15:59:53

Meliadine North Esker - Photo 3: Borrow Source: Meliadine north esker borrow source overview. Facing north-west.

APPENDIX Q

ORE STOCKPILES

West Elevation

☉ 77°E (T) ● 15 N 539513 6989403 ±12m ▲ 63m



704-ENG.EARC03140-46
30 Aug 2025 08:53:10

Ore Stockpile - Photo 1: Ore Stockpile: Ore stockpile overview. Facing east.

South West Elevation

☉ 35°NE (T) ● 15 N 539338 6989644 ±18m ▲ 69m



704-ENG.EARC03140-46
30 Aug 2025 09:17:42

Ore Stockpile - Photo 2: Ore Stockpile: View from crusher ramp. Facing northeast.

APPENDIX R

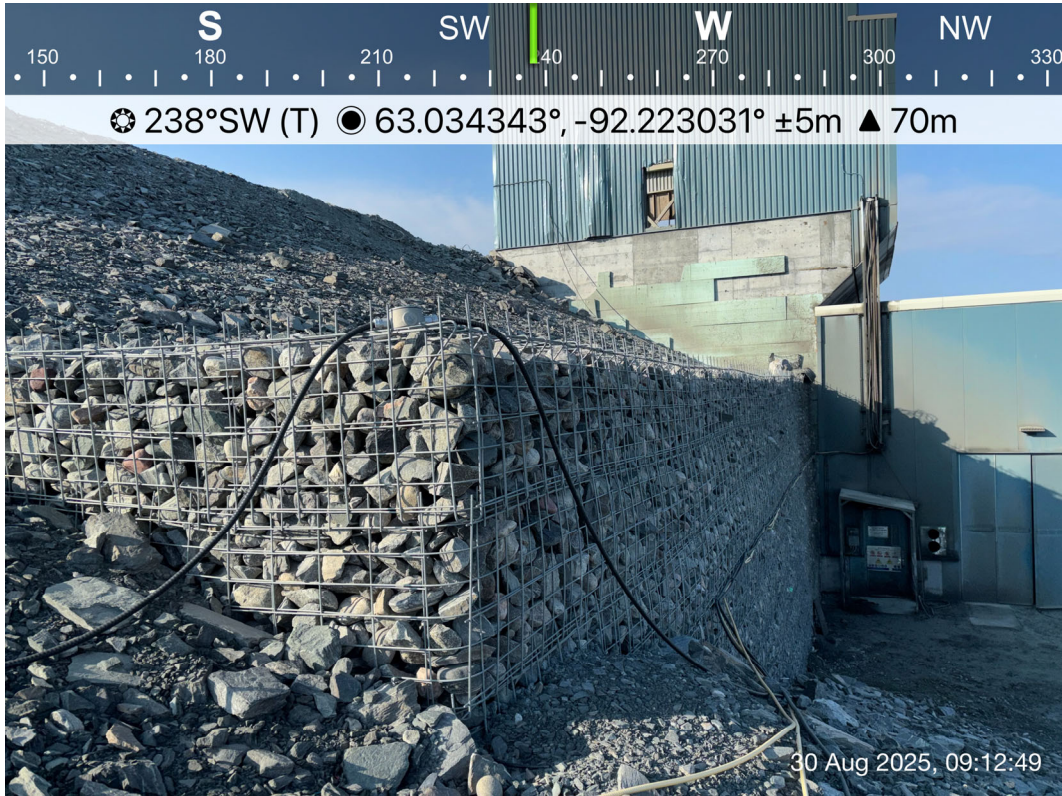
OTHER MELIADINE FACILITIES



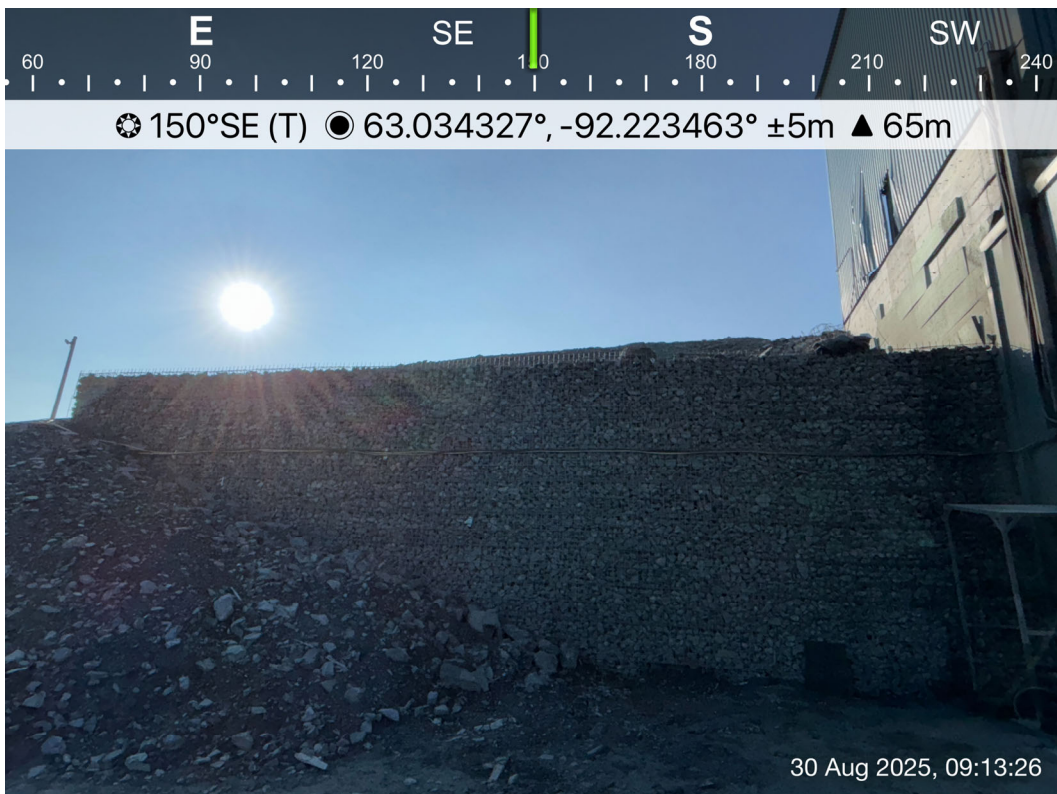
Crusher Ramp - Photo 1: Crusher Ramp: Overview of crusher ramp. Facing north.



Crusher Ramp - Photo 2: Crusher Ramp: Ramp side slope overview. Facing northwest.



Crusher Pad - Photo 3: Crusher Pad: Overview of MSE retaining wall and crusher building, east side. Facing southwest.



Crusher Pad - Photo 4: Crusher Pad: Overview of MSE retaining wall and crusher building, northeast side. Facing southeast.

West Elevation

📍 77°E (T) 📍 15 N 538995 6989526 ±55m ▲ 93m



Landfill - Photo 5: WRSF1 Landfill: Overview of landfill. Facing east.

North West Elevation

📍 135°SE (T) 📍 15 N 539050 6989577 ±4m ▲ 70m



Landfill - Photo 6: WRSF1 Landfill: Landfill east side slope overview. Facing southeast.

South West Elevation

☉ 34°NE (T) ● 15 N 538991 6989518 ±4m ▲ 69m



Landfill - Photo 7: WRSF1 Landfill: Landfill north side slope overview, minor settlement on crest/slope, minor cracking on crest. Facing northeast.



☉ 107°E (T) ● 63.032970°, -92.228614° ±7m ▲ 66m



Landfill - Photo 8: WRSF1 Landfill: Landfill overview, waste and debris. Facing east.

North West Elevation

☉ 137°SE (T) ● 15 N 537590 6990586 ±4m ▲ 66m



Emulsion Plant Pad - Photo 9: Emulsion Plant Pad: Overview of pad. Facing southeast.

South East Elevation

☉ 313°NW (T) ● 15 N 537577 6990575 ±4m ▲ 67m



Emulsion Plant Pad - Photo 10: Emulsion Plant Pad: Overview of pad, small depressions and ponding water. Facing northwest.

North West Elevation

☉ 126°SE (T) ● 15 N 537219 6990634 ±4m ▲ 56m



Emulsion Plant Pad - Photo 11: Emulsion Storage Pad: Overview of pad and storage. Facing southeast.

North Elevation

☉ 189°S (T) ● 15 N 537208 6990738 ±4m ▲ 56m



Emulsion Plant Pad - Photo 12: Emulsion Storage Pad: Overview of pad and storage. Facing south.



**Landfarm -
Photo 13:**

Landfarm: Overview of landfarm. Facing west.



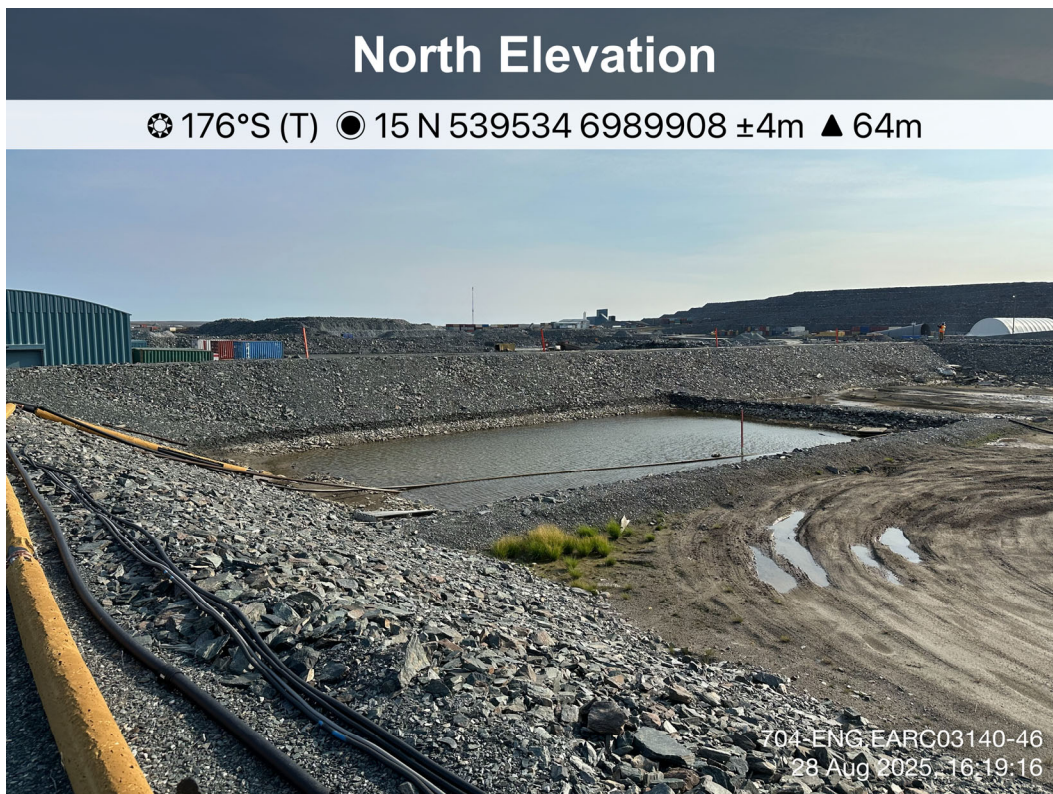
**Landfarm -
Photo 14:**

Landfarm: Overview of perimeter berm crest, exposed liner and geotextile. Facing southeast.



**Landfarm -
Photo 15:**

Landfarm: Overview of landfarm. Facing southeast.



**Landfarm -
Photo 16:**

Landfarm: Water collection pond and ponding water. Facing south.

North East Elevation

📍 213°SW (T) 📍 15 N 539552 6989877 ±4m ▲ 64m



704-ENG.EARC03140-46
28 Aug 2025, 16:20:15

**Landfarm -
Photo 17:**

Landfarm: Perimeter berm side slope overview. Facing southwest.

South East Elevation

📍 299°NW (T) 📍 15 N 539400 6989903 ±67m ▲ 66m



704-ENG.EARC03140-46
28 Aug 2025, 16:24:03

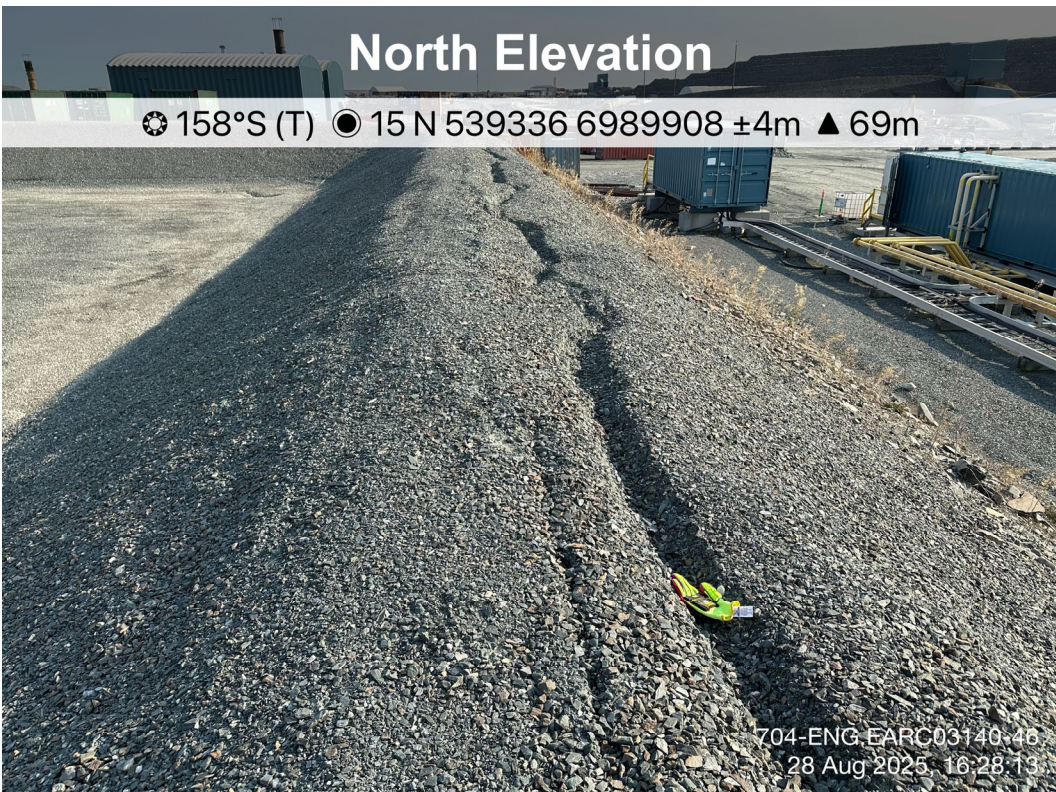
**Industrial Fuel
Tank Farm -
Photo 18:**

Industrial Fuel Tank Farm: Overview of tanks. Facing northwest.



Industrial Fuel Tank Farm - Photo 19:

Industrial Fuel Tank Farm: East side berm overview. Facing north.



Industrial Fuel Tank Farm - Photo 20:

Industrial Fuel Tank Farm: West side berm overview, cracking on crest. Facing south.

West Elevation

☉ 68°E (T) ● 15 N 539318 6989949 ±4m ▲ 68m



704-ENG.EARC03140-46
28 Aug 2025, 16:26:38

Industrial Fuel Tank Farm - Photo 21: Industrial Fuel Tank Farm: North side berm overview. Facing east.

South West Elevation

☉ 56°NE (T) ● 15 N 539350 6989868 ±4m ▲ 67m



704-ENG.EARC03140-46
28 Aug 2025, 16:29:05

Industrial Fuel Tank Farm - Photo 22: Industrial Fuel Tank Farm: South side berm overview, cracking on crest. Facing northeast.

North East Elevation

☉ 223°SW (T) ● 15 N 539944 6988805 ±4m ▲ 60m



704-ENG.EARC03140-46
30 Aug 2025, 09:33:48

**Portal 1 -
Photo 23:**

Portal 1: Overview of Portal 1. Facing southwest.

North Elevation

☉ 196°S (T) ● 15 N 539935 6988797 ±4m ▲ 66m



704-ENG.EARC03140-46
30 Aug 2025, 09:34:56

**Portal 1 -
Photo 24:**

Portal 1: Entrance of portal. Facing south.



**Portal 1 -
Photo 25:**

Portal 1: East side of Portal 1. Facing south.



**Portal 1 -
Photo 26:**

Portal 1: West side of Portal 1. Facing south.

West Elevation

☉ 79°E (T) ● 15 N 539364 6989504 ±6m ▲ 65m



704-ENG.EARC03140-46
30 Aug 2025, 09:24:05

**Portal 2 -
Photo 27:**

Portal 2: Overview of Portal 2. Facing east.

North West Elevation

☉ 157°SE (T) ● 15 N 539380 6989517 ±4m ▲ 65m



704-ENG.EARC03140-46
30 Aug 2025, 09:26:43

**Portal 2 -
Photo 28:**

Portal 2: Overview of Portal 2. Facing southeast.