

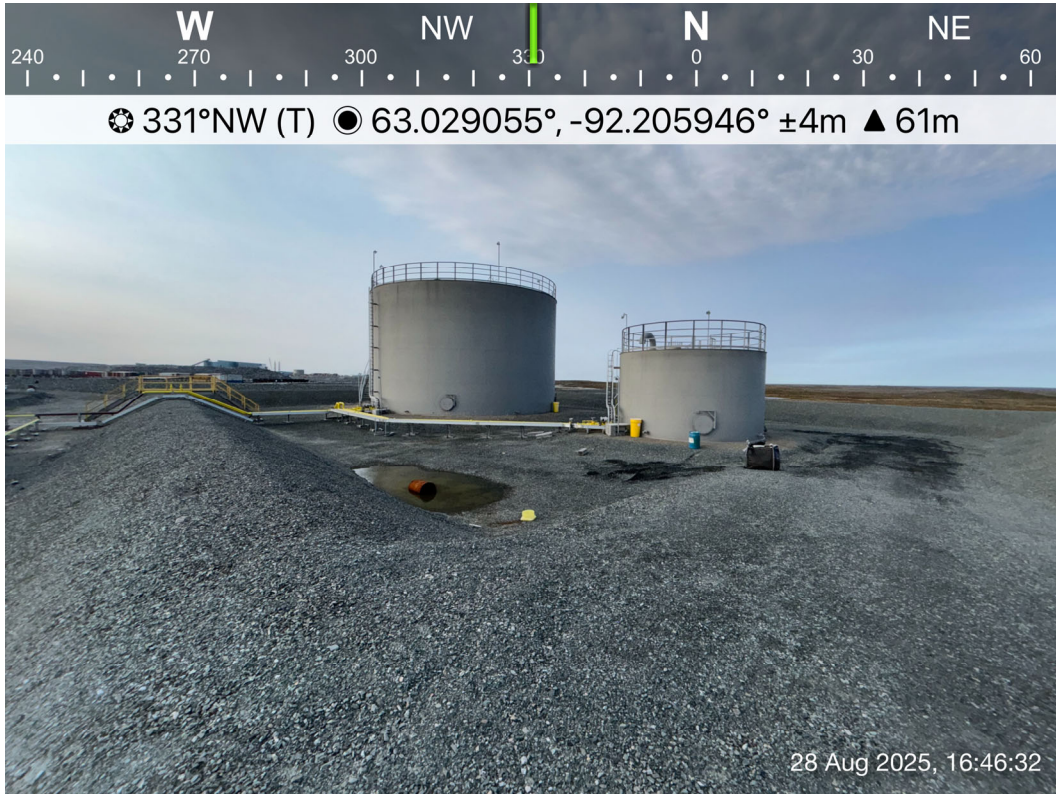
**Portal 2 -
Photo 29:**

Portal 2: Entrance of portal. Facing southeast.

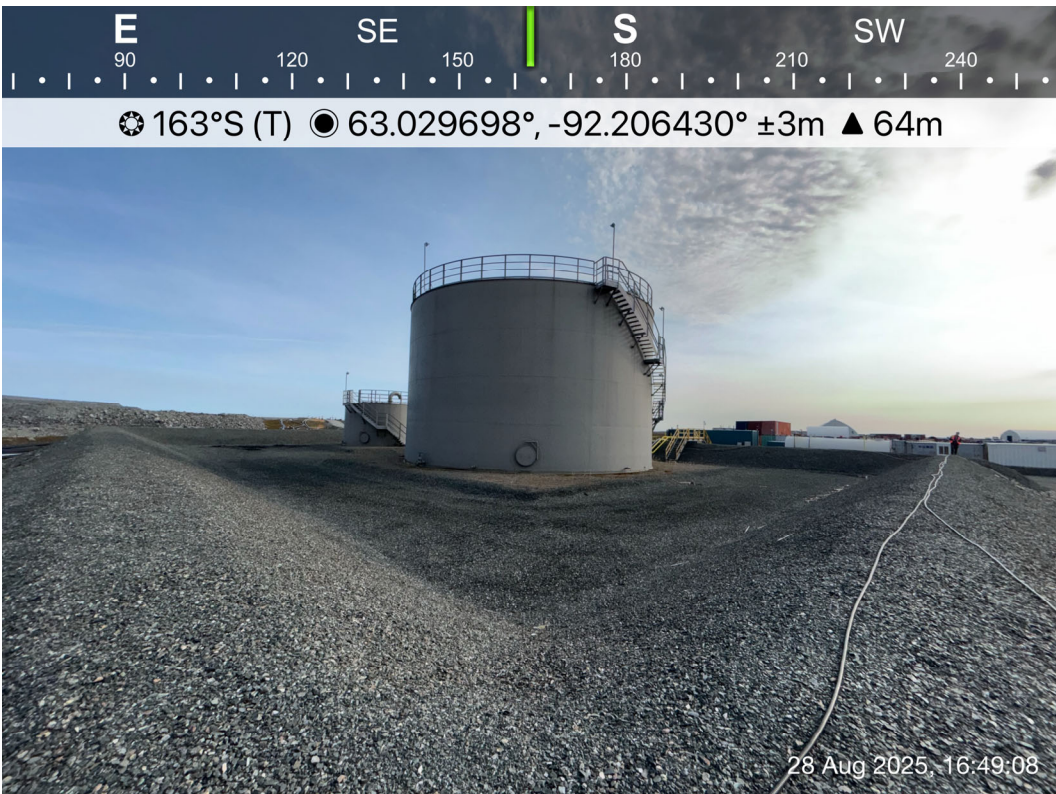


**Portal 2 -
Photo 30:**

Portal 2: Overview of east footing at Portal 2. Facing east.



Mine Site Fuel Tank Farm - Photo 31: Mine Site Fuel Tank Farm: Overview of 3M fuel tanks. Facing northwest.



Mine Site Fuel Tank Farm - Photo 32: Mine Site Fuel Tank Farm: Overview of 3M fuel tanks. Facing south.



Mine Site Fuel Tank Farm - Photo 33:

Mine Site Fuel Tank Farm: Overview of perimeter berm. Facing southwest.



Mine Site Fuel Tank Farm - Photo 34:

Mine Site Fuel Tank Farm: Overview of perimeter berm, exposed geotextile and liner on the downstream slope. Facing southeast.

South West Elevation

📍 36°NE (T) 📍 15 N 540088 6988983 ±9m ▲ 57m



704-ENG.EARC03140-46
28 Aug 2025, 16:37:30

**Pond P3 -
Photo 35:**

Pond P3: Overview of Pond P3. Facing northeast.

East Elevation

📍 259°W (T) 📍 15 N 540070 6988989 ±4m ▲ 58m



704-ENG.EARC03140-46
28 Aug 2025, 16:37:44

**Pond P3 -
Photo 36:**

Pond P3: Overview of upstream ditch. Facing west.

South West Elevation

☉ 31°NE (T) ● 15 N 540057 6988980 ±4m ▲ 57m



**Pond P3 -
Photo 37:**

Pond P3: Overview of upstream ditch, ponding water observed at the base of the channel. Facing northeast.

North Elevation

☉ 201°S (T) ● 15 N 540066 6988982 ±4m ▲ 59m



**Pond P3 -
Photo 38:**

Pond P3: Overview of Pond P3 access pad. Facing south.



**Pond P3 -
Photo 39:**

Pond P3: Overview of downstream berm, cracking observed at the crest of the berm. Facing northwest.



**Pond P3 -
Photo 40:**

Pond P3: Overview of downstream berm. Facing east.



**Pond P3 -
Photo 41:**

Pond P3: Overview of cracking along crest of downstream berm.



**Pond P3 -
Photo 42:**

Pond P3: Overview of cracking along crest of downstream berm.

APPENDIX S

EXPLORATION CAMP



**Exploration
Camp - Photo 1:**

Exploration Camp: Overview of the exploration camp. Facing southwest.



**Exploration
Camp - Photo 2:**

Exploration Camp: Fuel storage overview, northwest side. Facing northeast.



**Exploration
Camp - Photo 3:**

Exploration Camp: Fuel storage overview, southeast side. Facing southwest.



**Exploration
Camp - Photo 4:**

Exploration Camp: Freshwater intake pump house. Facing northwest.



**Exploration
Camp - Photo 5:**

Exploration Camp: Diffuser access road overview, looking west.

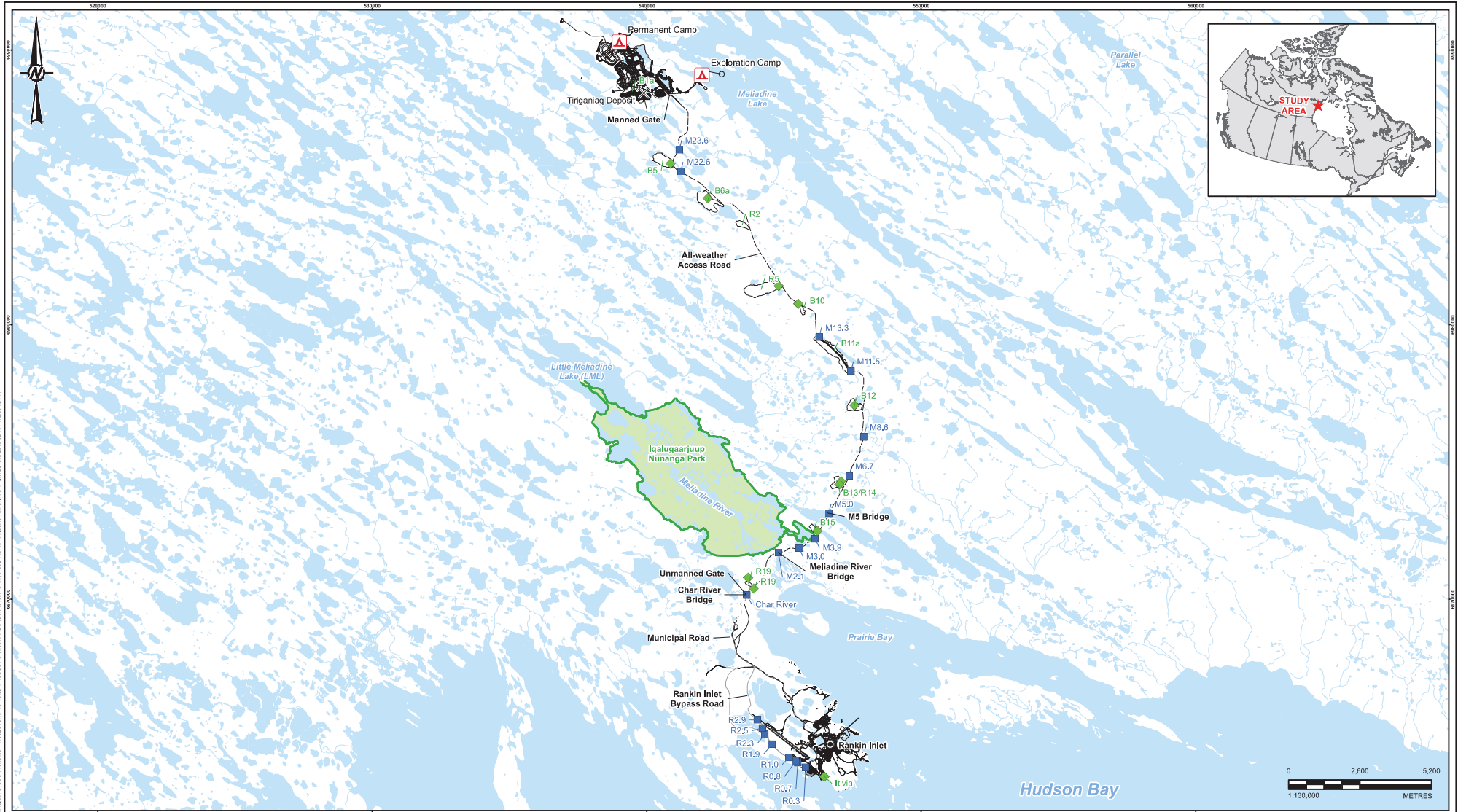


**Exploration
Camp - Photo 6:**

Exploration Camp: Diffuser pipeline overview. Facing northeast.

APPENDIX T

ALL-WEATHER ACCESS ROAD (AWAR)



LEGEND	
	CAMP
	PROPOSED MINE SITE
	QUARRY/BORROW PIT LOCATION
	WATERCOURSE CROSSING
	ALL-WEATHER ACCESS ROAD (AWAR)
	ROAD - NEW
	ROAD - EXISTING
	WATERCOURSE
	WATERBODY
	TERRITORIAL PARK

REFERENCE(S)
 1. BASE DATA OBTAINED FROM AGNICO EAGLE MINES LIMITED.
 2. DATUM: NAD83 PROJECTION UTM ZONE 15

CLIENT
 AGNICO EAGLE MINES LTD.

PROJECT
 MELIADINE GOLD PROJECT

CONSULTANT	YYYY-MM-DD	2019-02-14
	DESIGNED	FE
	PREPARED	CDB
	REVIEWED	FE
	APPROVED	ACI

TITLE
**MELIADINE ALL WEATHER ACCESS ROAD
 WITH QUARRIES AND WATERCOURSE CROSSINGS**

PROJECT NO.	CONTROL	REV.	FIGURE
18105719	3000/002	0	5

W:\1\StudyArea\Golder\Chert\MapDocs\MapDocs\PROJECT\DRAWINGS\2019\20190214\20190214_02_Meliadine_AWAR.dwg
 2019-02-14 11:23:52 AM

IF THIS MEASUREMENT DOES NOT MATCH WHAT IS SHOWN, THE SHEET SCALE HAS BEEN MODIFIED FROM ANS B

North East Elevation

☉ 226°SW (T) ● 15 N 543204 6968448 ±4m ▲ 16m



704-ENG.EARC03140-46
30 Aug 2025, 12:47:02

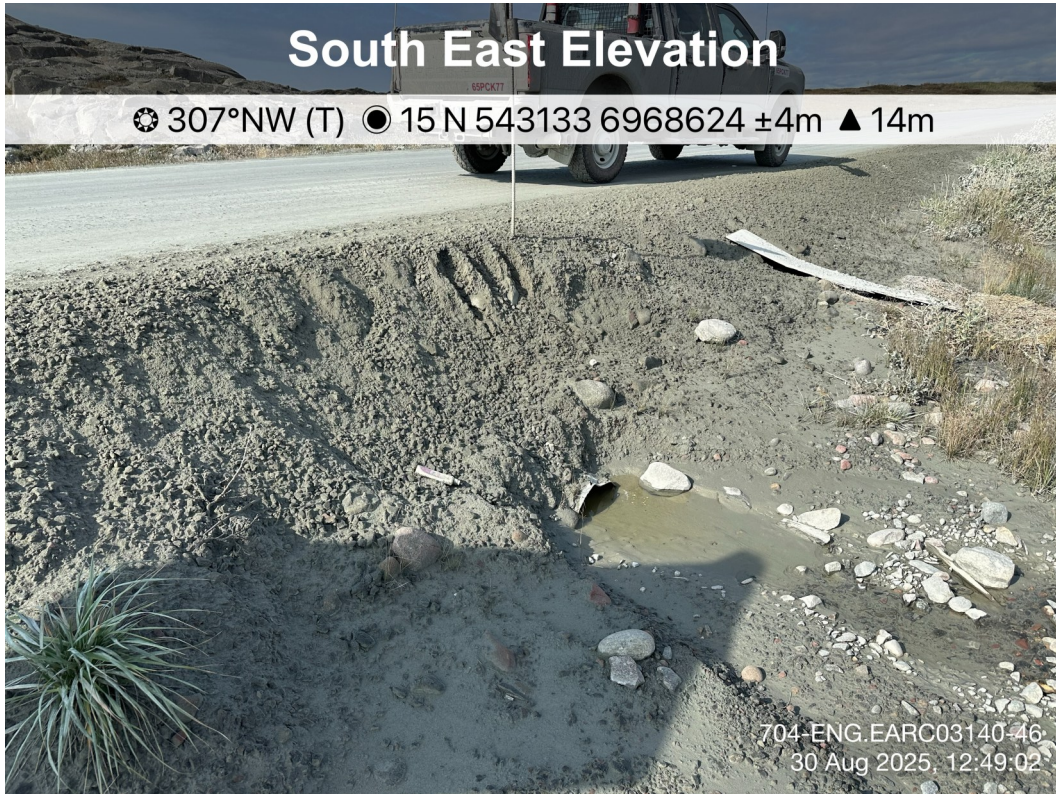
**AWAR Road/
Culvert - Photo 1:** Culvert KM 3.9: Outlet.



☉ 97°E (T) ● 62.843526°, -92.152109° ±3m ▲ 21m

30 Aug 2025, 12:47:09

**AWAR Road/
Culvert - Photo 2:** Culvert KM 3.9: Inlet.



**AWAR Road/
Culvert - Photo 3:** Culvert KM 4.1: Outlet.



**AWAR Road/
Culvert - Photo 4:** Culvert KM 4.1: Inlet.

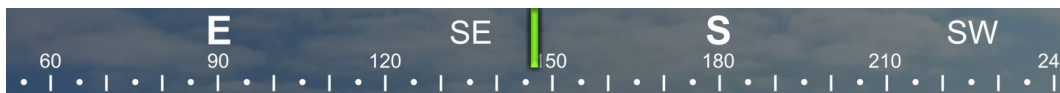
South East Elevation

☉ 325°NW (T) ● 15 N 543256 6969155 ±4m ▲ 22m



704-ENG.EARC03140-46
30 Aug 2025, 12:52:25

**AWAR Road/
Culvert - Photo 5:** Culvert KM 4.8: Outlet.



☉ 147°SE (T) ● 62.850071°, -92.150726° ±4m ▲ 27m



30 Aug 2025, 12:52:39

**AWAR Road/
Culvert - Photo 6:** Culvert KM 4.8: Inlet.



**AWAR Road/
Culvert - Photo 7:** Culvert KM 5.4: Outlet.



**AWAR Road/
Culvert - Photo 8:** Culvert KM 5.4: Inlet.