



**AWAR Road/
Culvert - Photo 9:** Char River Bridge KM 6.0: Overview.



**AWAR Road/
Culvert - Photo 10:** Char River Bridge KM 6.0: South Abutment.



**AWAR Road/
Culvert - Photo 11** Char River Bridge KM 6.0: North Abutment.



**AWAR Road/
Culvert - Photo 12:** Culvert KM 6.1: Outlet.



AWAR Road/ Culvert KM 6.1: Inlet.
Culvert - Photo 13



AWAR Road/ Culvert KM 6.9: Outlet.
Culvert - Photo 14:



**AWAR Road/
Culvert - Photo 15:** Culvert KM 6.9: Inlet.



**AWAR Road/
Culvert - Photo 16:** Culvert KM 7.0: Outlet.



AWAR Road/ Culvert KM 7.0: Inlet.
Culvert - Photo 17:



AWAR Road/ Culvert KM 7.35: Outlet.
Culvert - Photo 18:



AWAR Road/ Culvert KM 7.35: Inlet.
Culvert - Photo 19:



AWAR Road/ Meliadine River Bridge KM 8.0.
Culvert - Photo 20:

East Elevation

☉ 278°W (T) ● 15 N 544839 6971697 ±22m ▲ 11m



**AWAR Road/
Culvert - Photo 21:** Meliadine River Bridge KM 8.0.



☉ 49°NE (T) ● 62.872328°, -92.118925° ±6m ▲ 0m



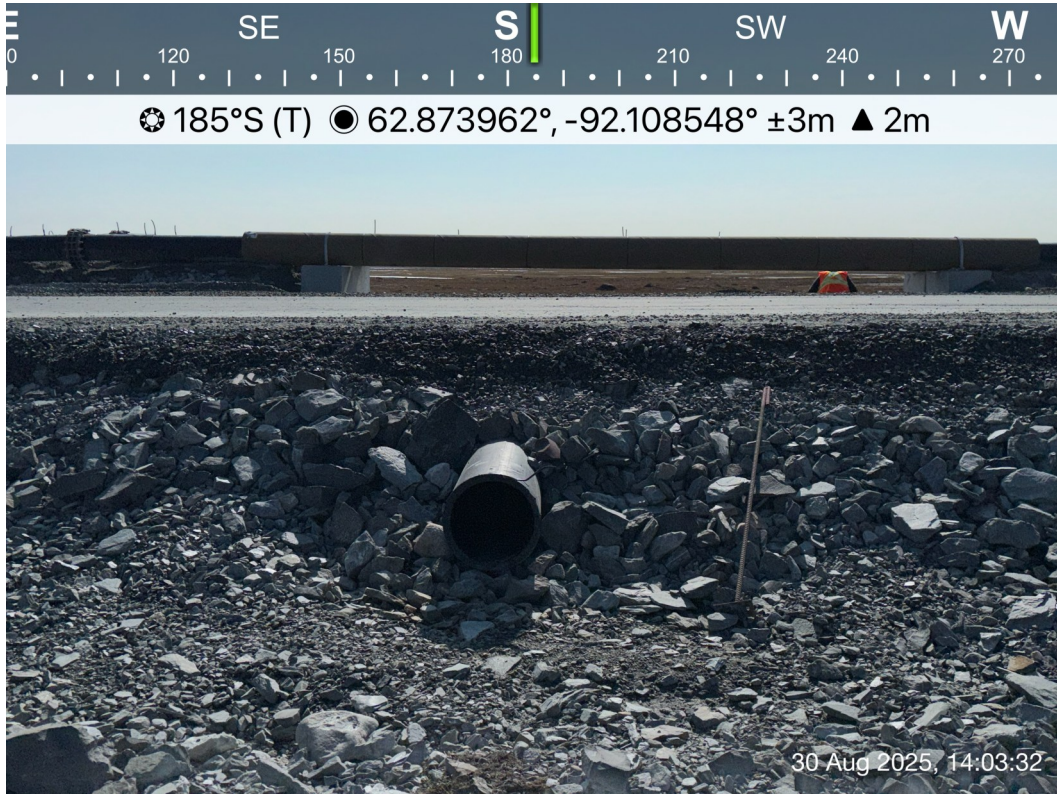
**AWAR Road/
Culvert - Photo 22:** Meliadine River Bridge KM 8.0: East abutment.



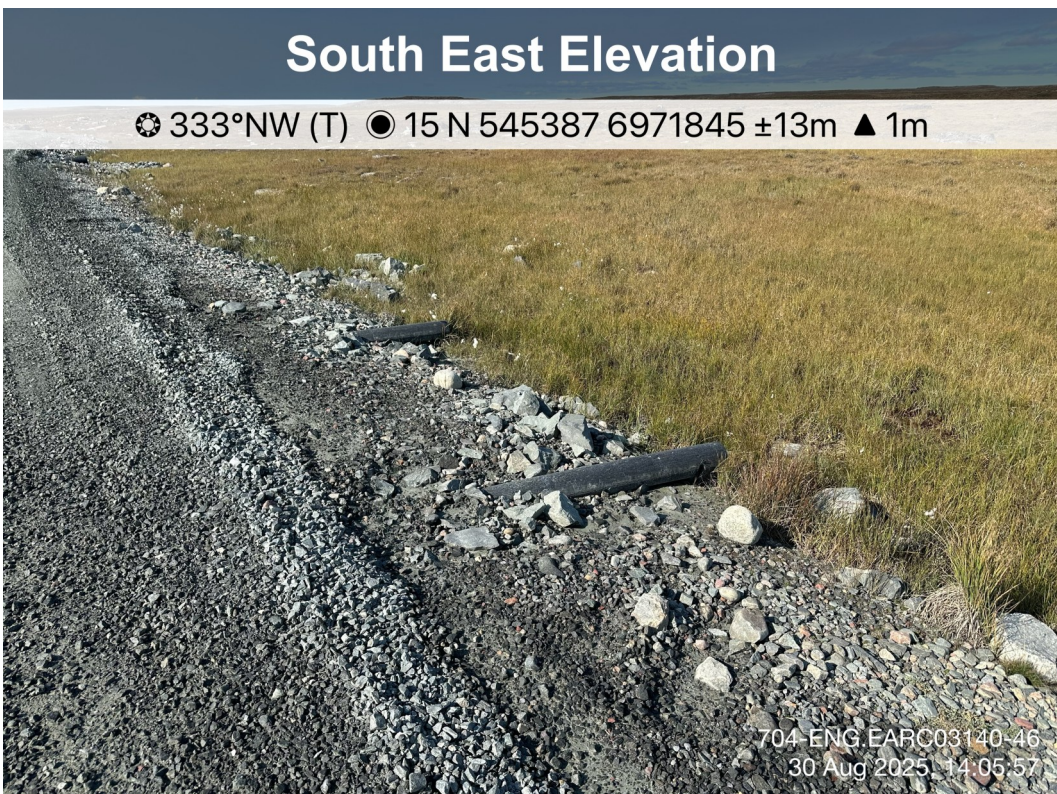
**AWAR Road/
Culvert - Photo 23:** Meliadine River Bridge KM 8.0: West abutment.



**AWAR Road/
Culvert - Photo 24:** Pipe Sleeve KM 8.7: Outlet.



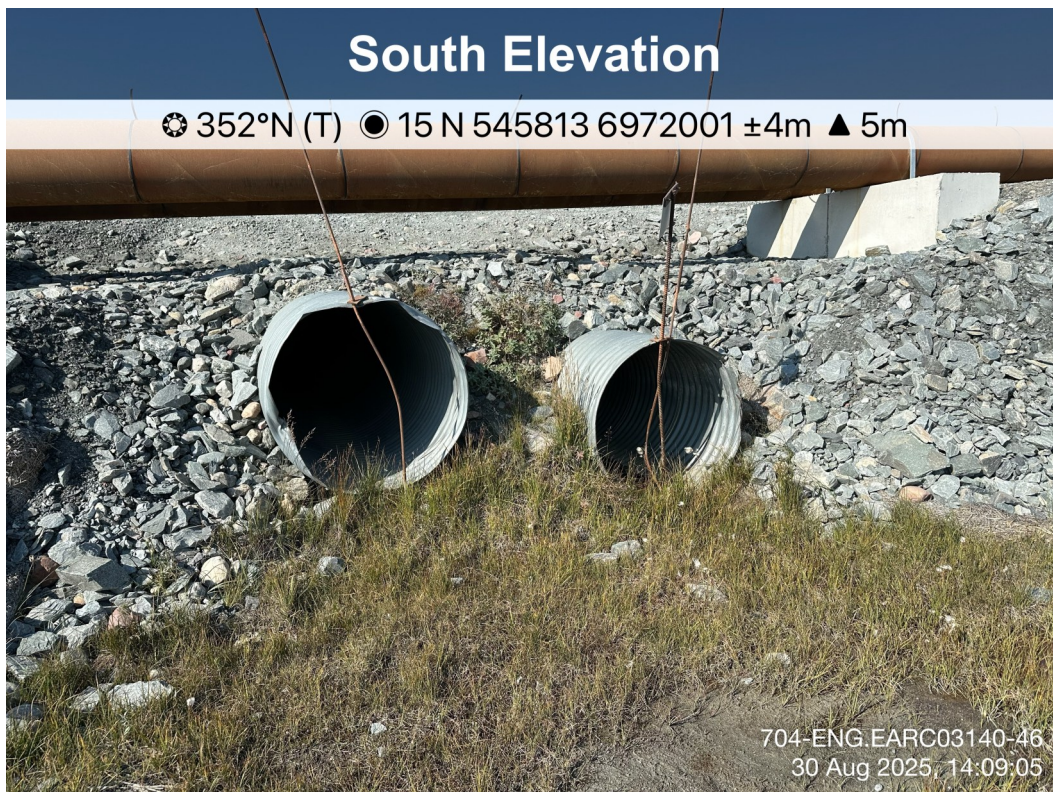
**AWAR Road/
Culvert - Photo 25:** Pipe Sleeve KM 8.7: Inlet.



**AWAR Road/
Culvert - Photo 26:** Pipe Sleeve KM 8.8: Inlet.



**AWAR Road/
Culvert - Photo 27:** Pipe Sleeve KM 8.8: Inlet.



**AWAR Road/
Culvert - Photo 28:** Culvert KM 9.3: Outlet.



AWAR Road/ Culvert KM 9.3: Inlet.
Culvert - Photo 29:



AWAR Road/ Culvert KM 9.6: Inlet.
Culvert - Photo 30:



**AWAR Road/
Culvert - Photo 31:** Culvert KM 9.6: Outlet.



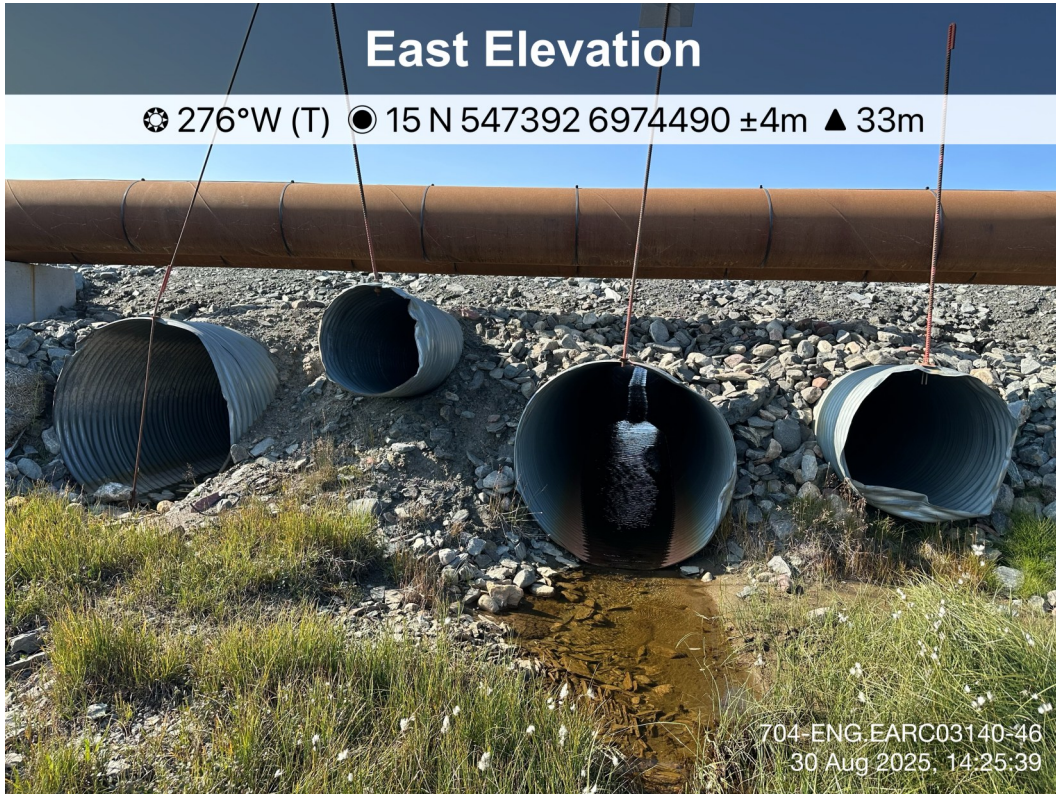
**AWAR Road/
Culvert - Photo 32:** M-5 Bridge KM 10.5.



**AWAR Road/
Culvert - Photo 33:** M-5 Bridge KM 10.5: South abutment.



**AWAR Road/
Culvert - Photo 34:** M-5 Bridge KM 10.5: North abutment, damaged gabion basket.



AWAR Road/ Culvert KM 12.2: Inlet.
Culvert - Photo 35:



AWAR Road/ Culvert KM 12.2: Outlet.
Culvert - Photo 36:



**AWAR Road/
Culvert - Photo 37:** KM 12.6 :No culvert installed, poor drainage condition, no sign of water flow.



**AWAR Road/
Culvert - Photo 38:** KM 12.6: No culvert installed, poor drainage condition, no sign of water flow.