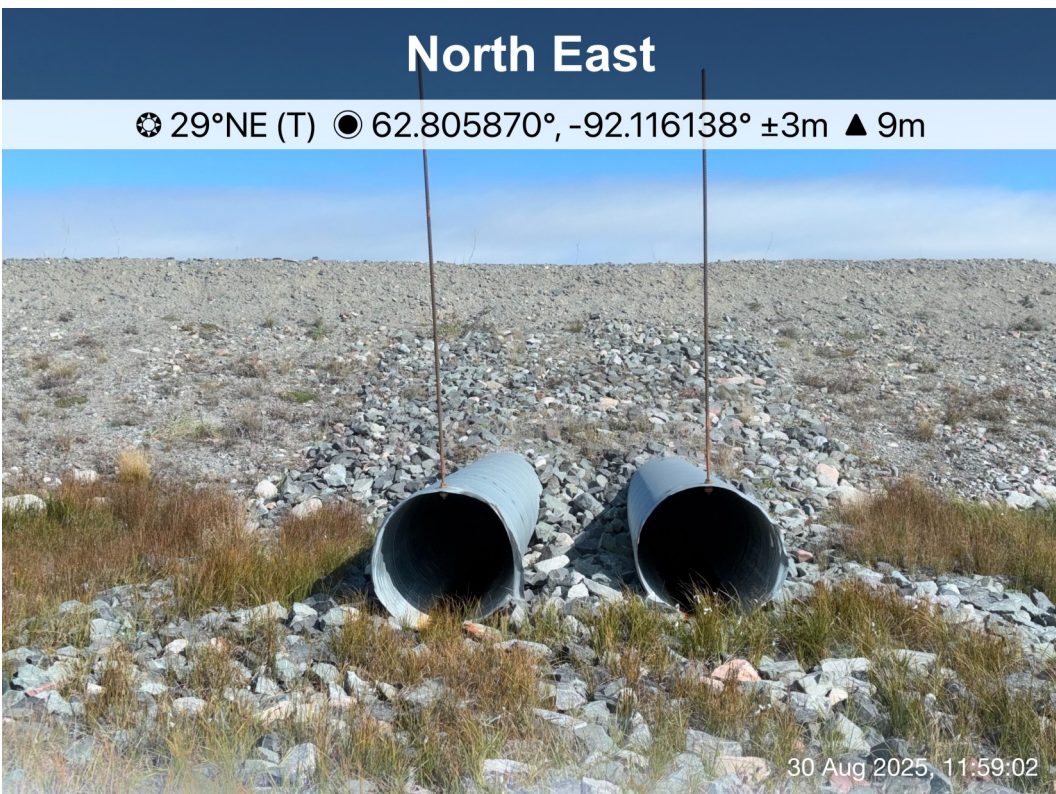




**Itivia Bypass Road/
Culvert - Photo 13:**

Culvert C05 - KM 1.2: Inlet.

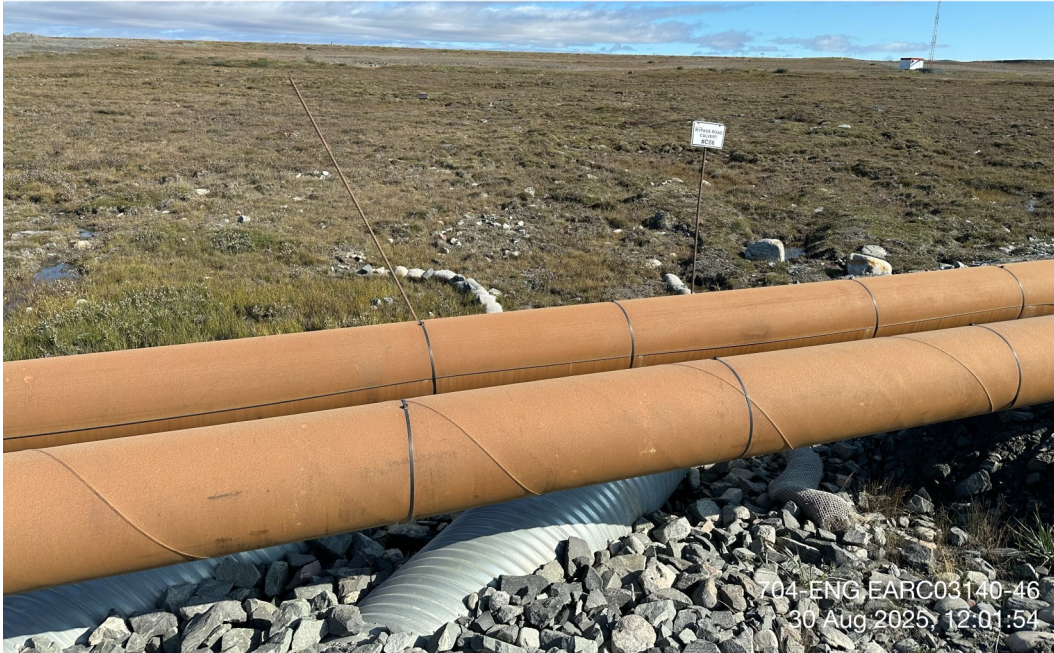


**Itivia Bypass Road/
Culvert - Photo 14:**

Culvert C05 - KM 1.2: Outlet.

South West Elevation

☉ 49°NE (T) ● 15 N 544850 6964450 ±9m ▲ 10m



704-ENG EARC03140-46
30 Aug 2025, 12:01:54

**Itivia Bypass Road/
Culvert - Photo 15:**

Culvert C06 - KM 1.5: Inlet.

South Elevation

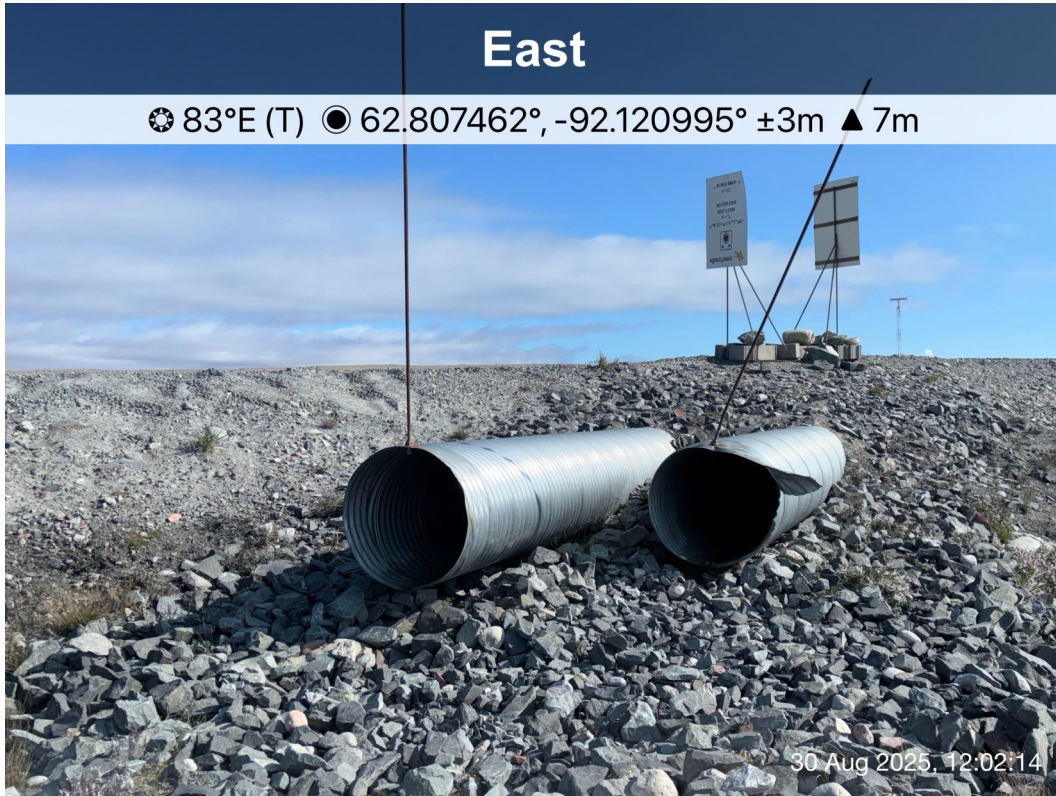
☉ 355°N (T) ● 15 N 544855 6964451 ±4m ▲ 4m



704-ENG EARC03140-46
30 Aug 2025, 12:02:16

**Itivia Bypass Road/
Culvert - Photo 16:**

Culvert C06 - KM 1.5: Inlet.



**Itivia Bypass Road/
Culvert - Photo 17:**

Culvert C06 - KM 1.5: Outlet.



**Itivia Bypass Road/
Culvert - Photo 18:**

Culvert C07 - KM 1.6: Inlet.

North East Elevation

☉ 237°SW (T) ● 15 N 544760 6964526 ±4m ▲ 3m



704-ENG.EARC03140-46
30 Aug 2025, 12:04:29

**Itivia Bypass Road/
Culvert - Photo 19:**

Culvert C07 - KM 1.65: Inlet.

North East

☉ 41°NE (T) ● 62.808005°, -92.122488° ±4m ▲ 6m



30 Aug 2025, 12:04:01

**Itivia Bypass Road/
Culvert - Photo 20:**

Culvert C07 - KM 1.65: Outlet.

West Elevation

☉ 88°E (T) ● 15 N 544612 6964689 ±60m ▲ 9m



704-ENG.EARC03140-46
30 Aug 2025 - 12:06:44

**Itivia Bypass Road/
Culvert - Photo 21:**

Culvert C08 - KM 1.9: Inlet.

South West Elevation

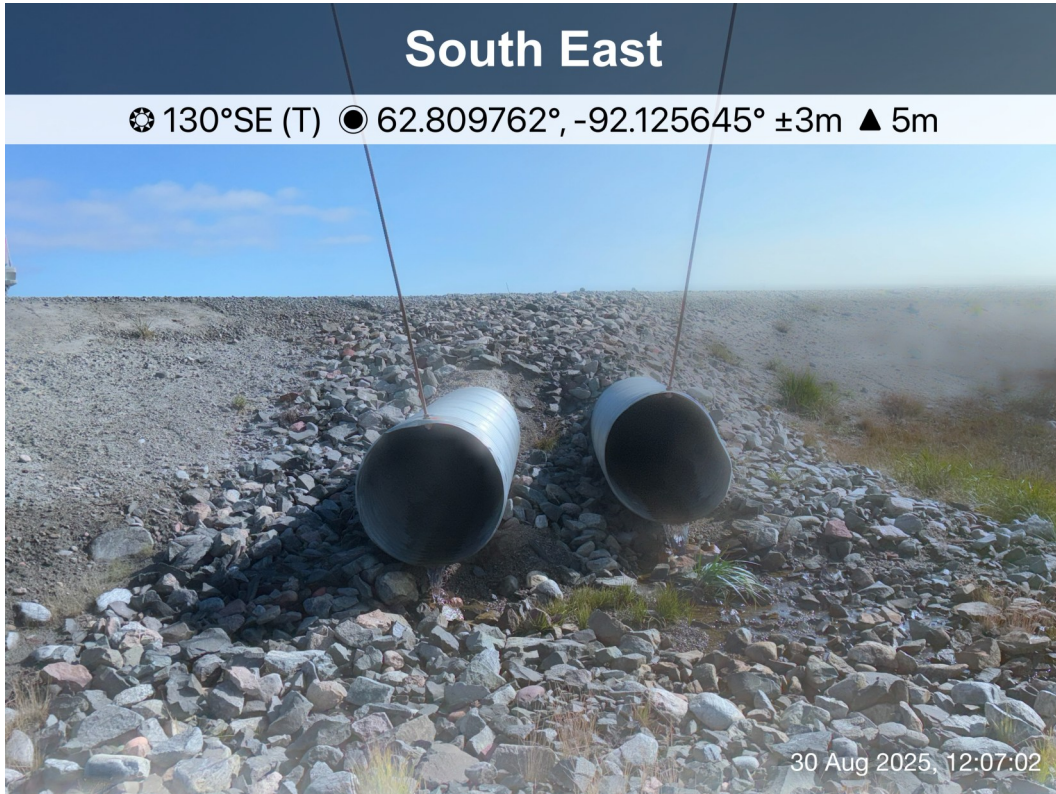
☉ 29°NE (T) ● 15 N 544616 6964688 ±4m ▲ 4m



704-ENG.EARC03140-46
30 Aug 2025, 12:07:15

**Itivia Bypass Road/
Culvert - Photo 22:**

Culvert C08 - KM 1.9: Inlet.



**Itivia Bypass Road/
Culvert - Photo 23:**

Culvert C08 - KM 1.9: Outlet.



**Itivia Bypass Road/
Culvert - Photo 24:**

Culvert C09 - KM 2.0: Inlet.

East Elevation

☉ 248°W (T) ● 15 N 544549 6964799 ±4m ▲ 2m



**Itivia Bypass Road/
Culvert - Photo 25:**

Culvert C09 - KM 2.0: Inlet.

North East

☉ 62°NE (T) ● 62.810502°, -92.126726° ±2m ▲ 6m



**Itivia Bypass Road/
Culvert - Photo 26:**

Culvert C09 - KM 2.0: Outlet.



**Itivia Bypass Road/
Culvert - Photo 27:**

Culvert C10 - KM 2.6: Inlet.



**Itivia Bypass Road/
Culvert - Photo 28:**

Culvert C10 - KM 2.6: Inlet.

East

☉ 71°E (T) ● 62.813559°, -92.133918° ±3m ▲ -1m



30 Aug 2025, 12:12:28

**Itivia Bypass Road/
Culvert - Photo 29:**

Culvert C10 - KM 2.6: Outlet.

East Elevation

☉ 260°W (T) ● 15 N 543572 6965302 ±4m ▲ -4m



704-ENG.EARC03140-46
30 Aug 2025, 12:16:32

**Itivia Bypass Road/
Culvert - Photo 30:**

Culvert C11 - KM 3.4: Inlet.

North East Elevation

☉ 204°SW (T) ● 15 N 543568 6965307 ±4m ▲ -4m



704-ENG.EARC03140-46
30 Aug 2025, 12:17:04

**Itivia Bypass Road/
Culvert - Photo 31:**

Culvert C11 - KM 3.4: Inlet.

North

☉ 360°N (T) ● 62.815004°, -92.145739° ±3m ▲ 0m



30 Aug 2025, 12:16:50

**Itivia Bypass Road/
Culvert - Photo 32:**

Culvert C11 - KM 3.4: Outlet.

South Elevation

☉ 9°N (T) ☉ 15 N 543004 6965849 ±4m ▲ 2m



**Itivia Bypass Road/
Culvert - Photo 33:**

Culvert C12 - KM 4.25: Inlet.

South East Elevation

☉ 318°NW (T) ☉ 15 N 543006 6965853 ±4m ▲ 1m



**Itivia Bypass Road/
Culvert - Photo 34:**

Culvert C12 - KM 4.25: Inlet.



**Itivia Bypass Road/
Culvert - Photo 35:**

Culvert C12 - KM 4.25: Outlet.



**Itivia Bypass Road/
Culvert - Photo 36:**

Culvert C13 - KM 4.6: Inlet.



**Itivia Bypass Road/
Culvert - Photo 37:**

Culvert C13 - KM 4.6: Inlet.



**Itivia Bypass Road/
Culvert - Photo 38:**

Culvert C13 - KM 4.6: Outlet.

North West Elevation

☉ 141°SE (T) ● 15 N 542906 6966645 ±111m ▲ -6m



**Itivia Bypass Road/
Culvert - Photo 39:**

Culvert C14 - KM 5.0: Inlet.

South West Elevation

☉ 50°NE (T) ● 15 N 542913 6966680 ±4m ▲ 5m



**Itivia Bypass Road/
Culvert - Photo 40:**

Culvert C14 - KM 5.0: Inlet.