



NIRB Uuktuutinga Ihivriughikhamut #125597

Northern Fulmar and Thick-billed Murre surveys and collections

Uuktuutinga Qanurittuq: New

Havaap Qanurittunia: Scientific Research

Uuktuutinga Ublua: 4/6/2021 2:40:15 PM

Period of operation: from 0001-01-01 to 0001-01-01

Piumayaat Angirutinga: from 0001-01-01 to 0001-01-01

Havauhikhaq Ikayuqtinga: Charlie Nakashuk
Environment and Climate Change Canada - Canadian Wildlife Service
P.O. Box 1870, 933 Mivvik Street
Iqaluit Nunavut X0A 0H0
Canada
Hivayautit Nampanga:: 867-975-4983, Kayumiktukkut Nampanga:: 867-975-4645

QANURITTUT

Tukihinnaqtunik havaariyaumayumik uqauhiyun

Qablunaatitut: see attached

Uiviititut: see attached

Inuktitut: see attached

Personnel

Personnel on site: 7

Days on site: 5

Total Person days: 35

Operations Phase: from 2021-07-05 to 2021-07-09

Operations Phase: from 2021-07-05 to 2021-09-15

Closure Phase: from 2021-09-12 to 2021-09-15

Post-Closure Phase: from to

Hulilukaarutit

Inigiya	Hulilukaarut Qanurittuq	Nunannga Qanurittaakhaanik	Initurlinga qanuritpa	Initurlinga utuqqarnitat unaluuniit Ingilraaqnitat Uyarannguqtut akhuurninnga	Qanitqiyauyuq qanitqiamut nunallaat kitulluuniit ahiruqtaliyainnit nuna
Prince Leopold Island Migratory Bird Sanctuary - Northern Fulmar Colony aerial survey and AIS station installation	Aerial surveys	Crown	Migratory Bird Sanctuary. Prince Leopold Island is the single most important seabird monitoring site in the Canadian Arctic and it has been surveyed since the 1970s.	No known archeological sites.	Prince Leopold Island is a Migratory Bird Sanctuary.
Prince Leopold Island Migratory Bird Sanctuary - Northern Fulmar Colony aerial survey and AIS station installation	Equipment installation	Crown	N/A	N/A	N/A
Cape Liddon - Northern Fulmar Colony aerial survey only	Aerial surveys	Crown	The cliffs of Cape Liddon support a Northern Fulmar colony for which the numbers of nesting birds have variously been estimated at 1000 - 10,000 pairs. The most recent and systematic survey in 2002 estimated 7000 pairs, 4% of the Canadian population.	No known archeological sites.	close to Resolute Bay and Prince Leopold Island Migratory Bird Sanctuary
Hobhouse Inlet - Northern Fulmar Colony aerial survey only	Aerial surveys	Crown	Hobhouse Inlet supports a large northern fulmar colony, estimated at 75,000 pairs in 1972, but reassessed systematically in 2001 and estimated at 15,000 pairs or	No known archeological sites.	close to Resolute Bay, Prince Leopold Island Migratory Bird Sanctuary, Arctic Bay and Simmilik National Park

			9% of the Canadian population.		
Baillarge Bay - Northern Fulmar Colony aerial survey only	Aerial surveys	Crown	A major northern fulmar colony breeds along 16 km of rugged, incised cliffs between Baillarge Bay and Elwin Inlet on the eastern shore of Admiralty Inlet. This colony has been estimated 10,00 and 100.000 pairs, although systematic surveys undertaken in 2002 suggested 20,000 pairs of fulmars, representing 11% of the Canadian populations.	No known archeological sites.	40 km north of Actic Bay, within Simmilik National Park
Princess Charlotte Monument - Northern Fulmar Colony aerial survey only	Aerial surveys	Crown	Is in Nirjutiqarvik National Wildlife Area, the Thick-billed Murre and northern fulmar colony has not been surveyed recently and new population estimates are required for the NWA management plan	Princess Charlotte Monument has no known Archeological sites	nearest community is Grise Fjord, Princess Charlotte Monument is located within Nirjutiqarvik NWA.
Cape Vera - Northern Fulmar Colony aerial survey only	Aerial surveys	Crown	An estimated 11,00 pairs of northern fulmars nest at Cape Vera, representing 6% of the Canadian population. this site has been surveyed for decades as it has an important breeding colony	No known archeological sites.	Halfway between Grise Fiord and Resolute Bay.
Fuel Cache	Fuel and chemical storage	Crown	Previously used to cache fuel for aerial surveys	No known archeological sites.	Halfway between Grise Fiord and Resolute Bay
Fuel Cache	Fuel and chemical	Crown	Previously used to cache fuel for	o known archeological sites.	Halfway between Resolute Bay and

	storage		aerial surveys		Arctic Bay, close to PLI MBs
--	---------	--	----------------	--	---------------------------------

Nunaliin Ilauyun, Aviktuqhimayuniitunullu Ikayuuhiarunguyun

Nunauyuq	Atia	Timiuyuq	Upluani Uqaqatigiyaungmata
Qausuittuq	Steve Piercey	Hamlet of Resolute Bay	2021-02-24

Angiuttauvaktunik

Naunaiqlugu nunanga talvani havauhikhaq ittuq:

North Baffin

Angiuttauvaktunik

Munariniqmut Ayuittiaqtuq	Angirutinga Qanurittuq	Tadja Qanurittaakhaanik	Ublua Tuniyauyuq/Uuktuqtuq	Umikvikhaa Ublua
Environment and Climate Change Canada	Canadian Wildlife Service Migratory Bird Sanctuary and National Wildlife Area access permit.	Applied, Decision Pending		
Nunavut Kavamanga, Avatiliriyikkut	Nunavut wildlife research permit.	Applied, Decision Pending		
Hamlets and Municipalities	Authorization for researchers to travel to the community.	Active	2021-02-24	

Project transportation types

Transportation Type	Qanuq Atuqtauniarmangaa	Length of Use
Air	Surveys will be conducted by helicopter flying at 20 km/h in order to take photographs of the colonies. To install the AIS station at PLI MBS a twin otter will transport personel and matireals to the site.	

Project accomodation types

Alaanut,

Ihuaqutivaluin Atuqtauyukhan

Hanalrutit atuqtaunahuat (ukuallu ikuutat, pampiutainnik, tingmitinik, akhaluutinik, hunaluuniit)

Hanalrutit Qanurittuq	Qaffiuyut	Aktikkulaanga – Qanurittullu	Qanuq Atuqtauniarmangaa
Twin Otter	1	20M	Drop off fuel cache
Helicopter (Bell 206L or similar)	1	32.4ft	aerial surveys, we will maintain distances that have been demonstrated to minimize disturbance while still allowing accurate counts to be obtained. The flight path will be planned to minimize the amount of time spent in the protected areas while enabling a complete survey of the relevant colonies.

Qanurittuq Urhuqyuaq unalu Qayangnaqtut Hunavaluit Aturninnga

Qanurittuq urhuqyuaq hunavaluit aturninnga:	Urhuqyuaq Qanurittuq	Qaffiuyut qattaryut	Qattaryuk Aktikkulaanga	Atauttimut Qaffiuyut	Ilanga	Qanuq Atuqtauniarmangaa
Aviation fuel	fuel	6	45	270	Gallons	Fuel caches will be located at Cape Vera (2 drums) and Whaler Point (4 drums), and should be in position for only 2-3 weeks

Imaqmik Aturninnga

Ubluq qanuraaluk (m3)	Aturumayain imavaluin utiqittagaani qanuq	Atulirumayain imavaluin utiqittagani humi
0		

Iqqakuq

Ikkakunik Munakgiyauyunik

Havauhikhaq Hulilukaarut	Qanurittuq Iqqakut	Ihumagiyauyuq Qanuraaluktut Atuqtait	Qanuq Iqqakuurniarmangaa	Halummaqtirarnirutikhan piyutin
Equipment installation	Ikulalimanngittun iqqakuuvaluin	10 lbs	will remove by twin otter	will remove by twin otter

Avatiliriniqmut Ayurhautingit:

During colony surveys, we will maintain distances that have been demonstrated to minimize disturbance while still allowing accurate counts to be obtained. The flight path will be planned to minimize the amount of time spent in the protected areas while enabling a complete survey of the relevant colonies. All surveys will be completed by helicopter, and we do not plan to land at the colonies. If landing is required, the area will be observed first to ensure that no bears, caribou, etc are in the immediate vicinity and the helicopter will land away from nesting areas, to the extent that is feasible. The AIS station installation will occur at the cabin site which is set back from the nesting cliffs. therefore we expect there to be no adverse effects on the colony.

Additional Information

SECTION A1: Project Info

SECTION A2: Allweather Road

SECTION A3: Winter Road

SECTION B1: Project Info

SECTION B2: Exploration Activity

SECTION B3: Geosciences

SECTION B4: Drilling

SECTION B5: Stripping

SECTION B6: Underground Activity

SECTION B7: Waste Rock

SECTION B8: Stockpiles

SECTION B9: Mine Development

SECTION B10: Geology

SECTION B11: Mine

SECTION B12: Mill

SECTION C1: Pits

SECTION D1: Facility

SECTION D2: Facility Construction

SECTION D3: Facility Operation

SECTION D4: Vessel Use

SECTION E1: Offshore Survey

SECTION E2: Nearshore Survey

SECTION E3: Vessel Use

SECTION F1: Site Cleanup

SECTION G1: Well Authorization

SECTION G2: Onland Exploration

SECTION G3: Offshore Exploration

SECTION G4: Rig

SECTION H1: Vessel Use

SECTION H2: Disposal At Sea

SECTION I1: Municipal Development

Qanurittuq Ittunik Avatinga: Avatingalluanga

Qanurittuq Ittunik Avatinga: Inuuhimayunut Avatinga

Qanurittuq Ittunik Avatinga: Inungit-maniliurutingit Avatinga

Miscellaneous Project Information

Naunaiyainiq ukuninnga Ayurhautingit unalu Piumayaat Ikikliyuumiutinahuarutit

Tamatkiumayunik Ihuikgutivaktunik

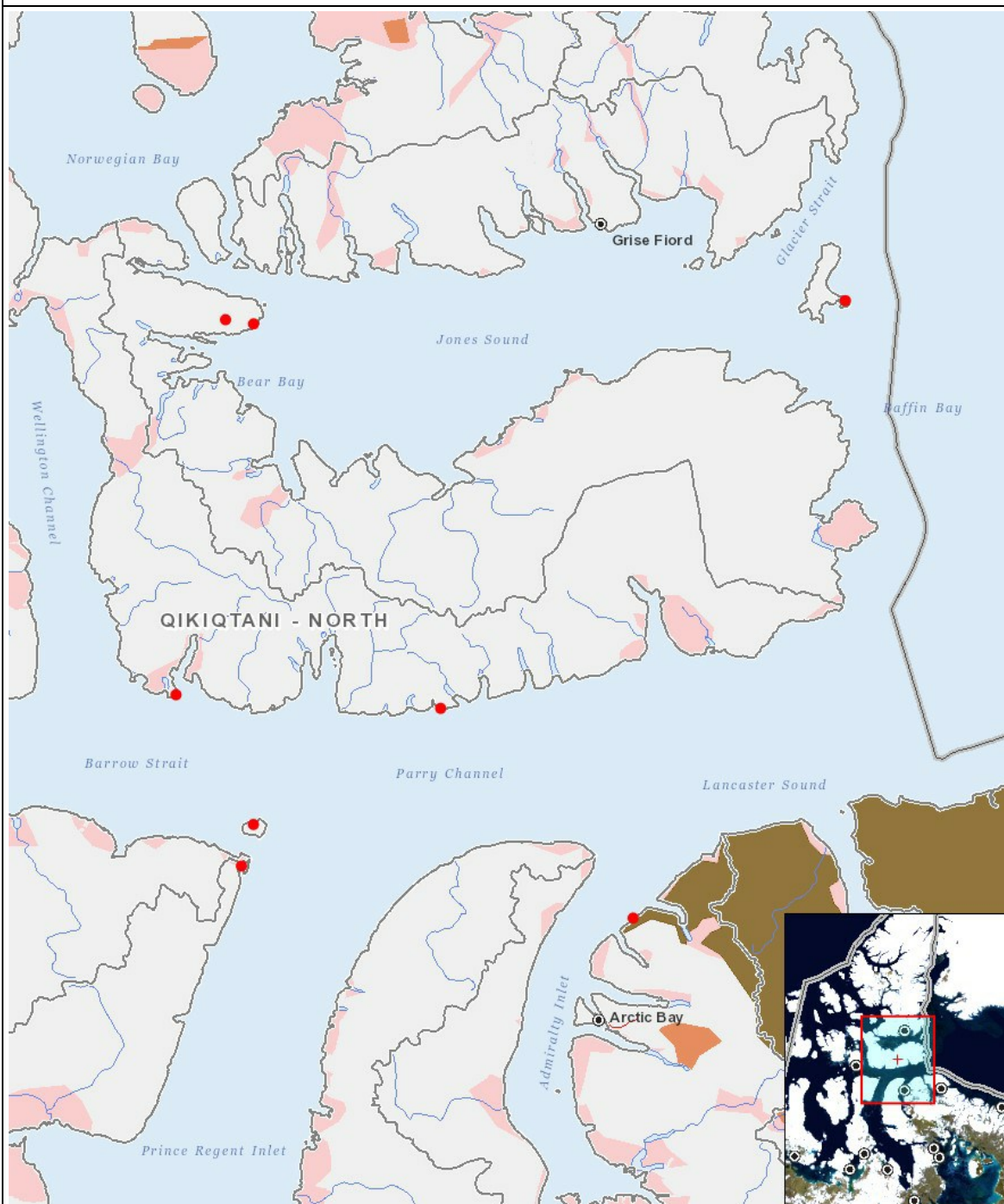
Impacts

Ilitariyauniq Avatiliriniqmut Ayurhautingit

		PHYSICAL													BIOLOGICAL													SOCIO-ECONOMIC												
		Designated environmental areas													Vegetation													Archaeological and cultural historic sites												
		Ground stability													Wildlife, including habitat and migration patterns													Employment												
		Permafrost													Birds, including habitat and migration patterns													Community wellness												
		Hydrology / Limnology													Aquatic species, incl. habitat and migration/spawning													Community infrastructure												
		Water quality													Wildlife protected areas													Human health												
		Climate conditions													Wildlife protected areas																									
		Eskers and other unique or fragile landscapes																																						
		Surface and bedrock geology																																						
		Sediment and soil quality																																						
		Tidal processes and bathymetry																																						
		Air quality																																						
		Noise levels																																						

(P = Nakuuyuq, N = Nakuungittut unalu mikhilimaittuq, M = Nakuungittut unalu mikhittaaqtuq, U = Naluyauyuq)

Havaariyauyukhamut Nayugaa



List of Project Geometries

- 1 point Prince Leopold Island Migratory Bird Sanctuary - Northern Fulmar Colony aerial survey and AIS station installation
- 2 point Cape Liddon - Northern Fulmar Colony aerial survey only
- 3 point Hobhouse Inlet - Northern Fulmar Colony aerial survey only
- 4 point Baillarge Bay - Northern Fulmar Colony aerial survey only
- 5 point Cape Vera - Northern Fulmar Colony aerial survey only
- 6 point Fuel Cache
- 7 point Fuel Cache
- 8 point Princess Charlotte Monument - Northern Fulmar Colony aerial survey only