



ᐃᓄᓂᓪᓕ ᓴᓂᓕᓴᓂᓄᓪ ᐃᓴᓴ  
 ᐃᓄᓂᓪᓕ ᓴᓂᓂᓕᓴᓪ ᓄᓄᓕᓪᓕ  
 ᓂᓂᓴᓂᓄᓪ ᓅᓂᓴᓂᓪᓕ  
 ᓄᓄᓂᓪᓕ ᐃᓂᓂᓪ  
 ᐃᓄᓂᓪᓕ ᓴᓂᓂᓕᓴᓂᓄᓪ ᐃᓂᓂᓪ ᐃᓂ  
 ᐃᓂᓂᓪᓕ ᐃᓂᓂᓪᓕ  
 “ᓂᓂᓂᓪᓕ ᐃᓂᓂᓪᓕᓂᓪ” ᓂᓂᓂᓪ  
 ᓴᓂᓂᓪᓕ ᓂᓂᓂᓪᓕ ᓂᓂᓂᓪ ᐃᓂᓂᓪᓕ



ᓄᓇᓂᓪ ᐃᓄᓂᓕᓴᓂᓄᓪ ᓅᓂᓴᓂᓪᓕ  
 ᓂᓂᓂᓪᓕ ᓂᓂᓂᓪᓕ: 11MN034  
 ᓴᓂ 31, 2023

[illegible]

**ᐅᓂᑦᑲርᐅᕐᑐᕐᖃ:**      ᐃᒪር ᐃᐃᑦ, ᐱርᓚᐊᑦ ᑦካᓄᑦ ᐅᕐᑲᐅᔭᔭ III ([ekoide@nirb.ca](mailto:ekoide@nirb.ca))  
                                  ᐆᑦ ᑳᓚᓐ, ᐊᐅᐅᑦᑎᔭ, ᐊᐅᑐᕐᑲᑦᓯᓂᑦᑦ ᕐᑲᐅᔭᔭᐃᓂᕐᖃ ([kmorisson@nirb.ca](mailto:kmorisson@nirb.ca))

[illegible]

ፍፍርፍፍ ልክ ለክፍል: >ናፈር ለበ, ኃይለፍርድጋሰፍድ ልዚ ኃይለፍርድጋሰፍድ ጋረጋግጥጥ  
 ልዚ ወፈር, ለርሲፍ ገፍፍ ወፍፍፍ III  
 ልዚ በፍፍ, ወፍፍፍፍፍፍ ለርሲፍ ልዚ ጋረጋግጥጥ በፍፍፍፍፍፍ



Δ-2-9-10

1	ለጥበቃ ስራዎች.....	1
1.1	ለጥበቃ ስራዎች ስራዎች.....	1
1.1.1	ርዕሰ ስራዎች ስራዎች.....	1
1.2	በጥበቃ ስራዎች ስራዎች.....	2
1.2.1	ለጥበቃ ስራዎች ስራዎች.....	7
2	የጥበቃ ስራዎች ስራዎች.....	8
2.1	ለጥበቃ ስራዎች ስራዎች.....	8
2.2	የጥበቃ ስራዎች ስራዎች.....	9
2.3	በጥበቃ ስራዎች ስራዎች.....	10
2.4	በጥበቃ ስራዎች ስራዎች.....	10
2.5	ጥበቃ ስራዎች ስራዎች.....	10
3	በጥበቃ ስራዎች ስራዎች.....	11
3.1	የጥበቃ ስራዎች ስራዎች.....	11
3.2	የጥበቃ ስራዎች ስራዎች.....	16
3.3	የጥበቃ ስራዎች ስራዎች.....	20
3.4	የጥበቃ ስራዎች ስራዎች.....	23
4	የጥበቃ ስራዎች ስራዎች.....	27

በጥናታችን ውስጥ የሚገኝ የጥናት ስልጣን

[illegible]









[illegible]



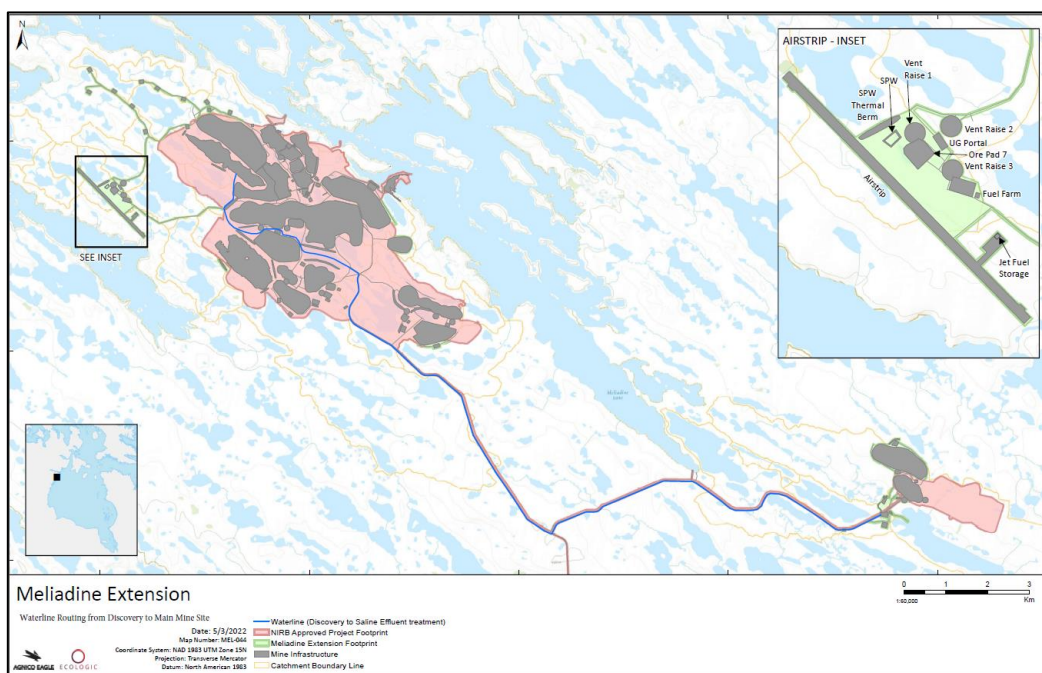


ፎቶግራፍ ለፌዴራል ፖሊስ ጋራላክቶሪ  
ወይንስትራል ልብረት ለፖሊስ ማረጋገጫ  
በፖሊስ ፖርቶፖሊስ ቁጥር 11MN034



$$\Delta L^{\epsilon} \Gamma^b \triangleleft \triangleright c^c \cap^e \delta^b$$

- [illegible]

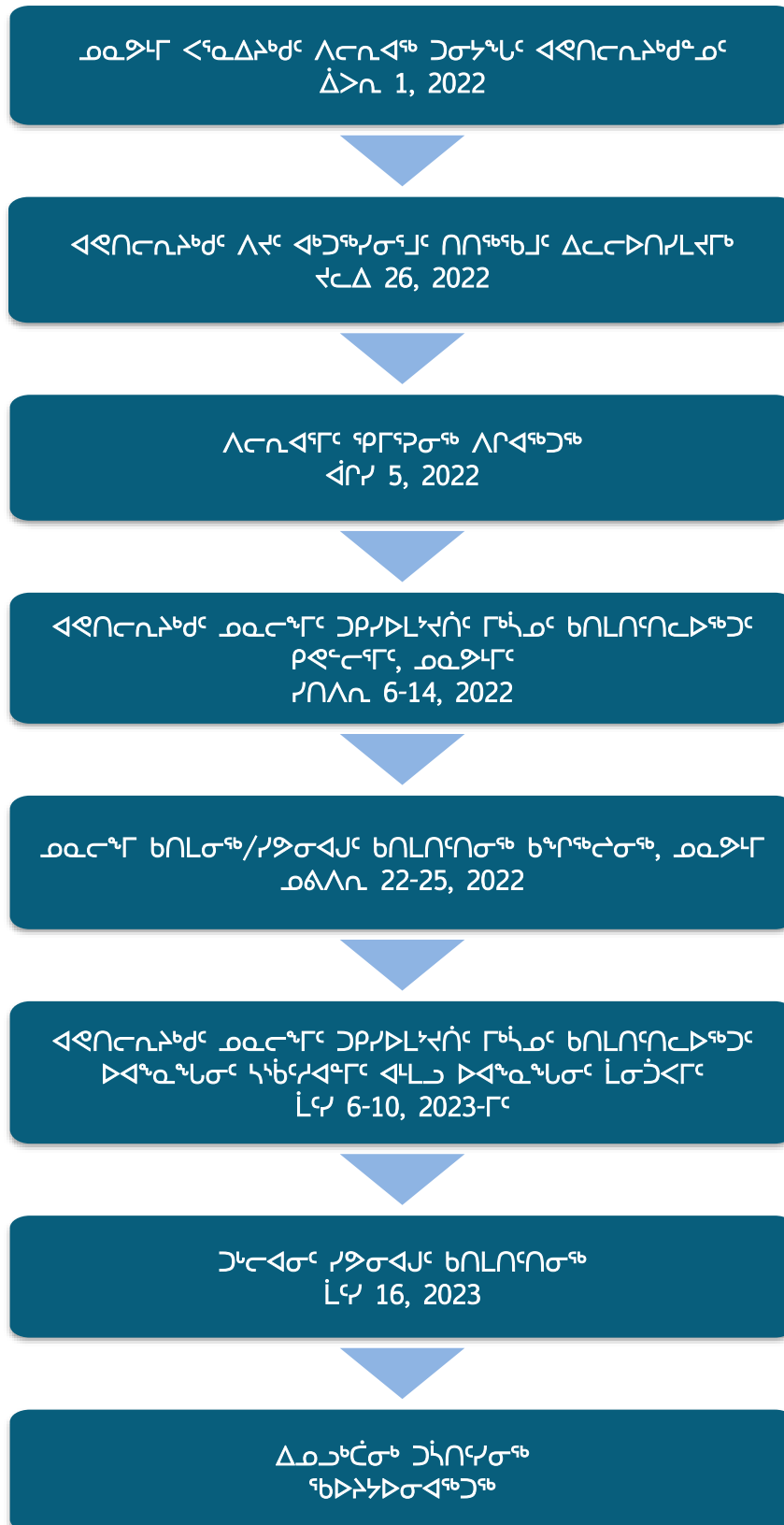


၁၁၁Δ<sup>b</sup>dC<sup>၆</sup> 3: C<sup>၇</sup>၃၄၆C<sup>၆</sup> ၂ΔJ၇၄၆၇σ<sup>၆</sup>၂C Δσ၇၆<sup>၆</sup>၆<sup>၂</sup>

<sup>25</sup> ከዕለቱ በፊት ጥናታዊ ምርመራዎች ለጥያቄው ማረጋገጫ ሊያገለግሉ ይችላሉ፡፡



### 1.2.1 ለፍርድ ቤቱ ለጥያቄዎች ማረጋገጫ ለሚያስፈልጉት ሰነዶችና ማስረጃዎች





## 2      ᐊᑦᑎᑦᑎᐱᐅᑦ ᓄᑦᑦᑦ ᐃᑭᑦᑎᐱᑦᑎᑦ

### 2.1      ᐱᑦᑎᑦᑎᐱᑦ

ᐊᑦᑎᑦᑎᐱᐅᑦ ᓄᑦᑦᑦ ᐃᑭᑦᑎᐱᑦᑎᑦ ᑦᑎᑦᑎᑦᑎᑦᑎᑦᑎᑦ ᓄᑦᑦᑦ ᑭᑭᑦᑎᑦᑎᑦ ᑦᑎᑦᑎᑦ ᑦᑎᑦᑎᑦ (Fond du Lac), ᐊᑦᑎᑦ ᑭᑭᑦᑎᑦ ᑦᑎᑦᑎᑦ, ᑦᑎᑦᑎᑦ, ᐊᑦᑎᑦ ᑦᑎᑦᑎᑦ ᑦᑎᑦᑎᑦ, ᑦᑎᑦᑎᑦ, ᑦᑎᑦᑎᑦ 6-10, 2023-ᑦᑎᑦ, ᐊᑦᑎᑦᑎᑦᑎᑦᑎᑦ ᐊᑦᑎᑦᑎᑦᑎᑦᑎᑦ ᐊᑦᑎᑦᑎᑦ. ᐊᑦᑎᑦᑎᑦᑎᑦ ᓄᑦᑦᑦ ᑭᑭᑦᑎᑦᑎᑦ, ᑦᑎᑦ ᐊᑦᑎᑦᑎᑦ ᑦᑎᑦᑎᑦ (ᐊᑦᑎᑦᑎᑦᑎᑦᑎᑦᑎᑦ ᑦᑎᑦ 9, 2023-ᑦᑎᑦ) ᓄᑦᑎᑦᑎᑦᑎᑦᑎᑦᑎᑦ ᐊᑦᑎᑦᑎᑦᑎᑦᑎᑦᑎᑦ ᓄᑦᑦᑦ. ᐊᑦᑎᑦᑎᐱᐅᑦ ᐊᑦᑎᑦᑎᑦᑎᑦᑎᑦ ᐊᑦᑎᑦ ᓄᑦᑦᑦᑎᑦᑎᑦ ᐊᑦᑎᑦ ᐊᑦᑎᑦᑎᑦ ᐊᑦᑎᑦᑎᑦ ᐊᑦᑎᑦᑎᑦ ᐊᑦᑎᑦᑎᑦ.

ᐊᑦᑎᑦᑎᐱᐅᑦ ᐃᑭᑦᑎᐱᑦᑎᑦ ᑦᑎᑦᑎᑦᑎᑦᑎᑦ ᐊᑦᑎᑦᑎᑦ ᐊᑦᑎᑦᑎᑦᑎᑦᑎᑦ:

- ᐊᑦᑎᑦᑎᑦ ᐊᑦᑎᑦᑎᐱᐅᑦ ᐊᑦᑎᑦᑎᑦ ᐊᑦᑎᑦᑎᑦᑎᑦᑎᑦ;
- ᐊᑦᑎᑦᑎᑦ ᐃᑭᑦᑎᐱᑦᑎᑦ ᐊᑦᑎᑦᑎᑦᑎᑦᑎᑦ ᐊᑦᑎᑦ ᐊᑦᑎᑦ ᓄᑦᑦᑦ ᐊᑦᑎᑦ ᐊᑦᑎᑦᑎᑦ ᐊᑦᑎᑦᑎᑦᑎᑦᑎᑦ;
- ᐊᑦᑎᑦᑎᑦᑎᑦᑎᑦ ᓄᑦᑦᑦᑎᑦᑎᑦ ᐊᑦᑎᑦᑎᑦᑎᑦᑎᑦ ᐊᑦᑎᑦ ᐊᑦᑎᑦᑎᑦᑎᑦᑎᑦ ᐊᑦᑎᑦᑎᑦ;
- ᐊᑦᑎᑦᑎᑦᑎᑦ ᐊᑦᑎᑦᑎᑦ ᐊᑦᑎᑦ ᐊᑦᑎᑦᑎᑦᑎᑦᑎᑦ ᐊᑦᑎᑦᑎᑦᑎᑦ ᐊᑦᑎᑦᑎᑦᑎᑦᑎᑦ ᐊᑦᑎᑦᑎᑦᑎᑦᑎᑦᑎᑦ “ᐊᑦᑎᑦᑎᑦᑎᑦᑎᑦᑎᑦ” ᐊᑦᑎᑦᑎᑦᑎᑦᑎᑦ; ᐊᑦᑎᑦ
- ᐊᑦᑎᑦᑎᑦᑎᑦ ᐊᑦᑎᑦᑎᑦᑎᑦᑎᑦ ᐊᑦᑎᑦᑎᑦᑎᑦᑎᑦᑎᑦᑎᑦᑎᑦᑎᑦ.

ᐊᑦᑎᑦᑎᑦ ᐊᑦᑎᑦ ᐊᑦᑎᑦᑎᑦᑎᑦᑎᑦᑎᑦᑎᑦ ᐊᑦᑎᑦᑎᑦ ᐊᑦᑎᑦᑎᑦᑎᑦᑎᑦ, ᐊᑦᑎᑦᑎᑦᑎᑦ ᐊᑦᑎᑦᑎᑦᑎᑦᑎᑦ ᐊᑦᑎᑦ ᐊᑦᑎᑦᑎᑦᑎᑦᑎᑦ ᓄᑦᑦᑦᑎᑦ ᐊᑦᑎᑦᑎᑦᑎᑦ ᐊᑦᑎᑦᑎᑦᑎᑦᑎᑦ ᐊᑦᑎᑦᑎᑦᑎᑦᑎᑦ ᐊᑦᑎᑦᑎᑦᑎᑦᑎᑦᑎᑦ ᐊᑦᑎᑦᑎᑦᑎᑦᑎᑦᑎᑦ ᐊᑦᑎᑦᑎᑦᑎᑦᑎᑦᑎᑦ ᐊᑦᑎᑦᑎᑦᑎᑦᑎᑦᑎᑦ ᐊᑦᑎᑦᑎᑦᑎᑦᑎᑦᑎᑦ ᐊᑦᑎᑦᑎᑦᑎᑦᑎᑦᑎᑦ.

ᐊᑦᑎᑦᑎᑦ ᐊᑦᑎᑦᑎᑦᑎᑦᑎᑦ ᓄᑦᑦᑦ ᐃᑭᑦᑎᐱᑦᑎᑦ ᑦᑎᑦᑎᑦᑎᑦᑎᑦᑎᑦ ᐊᑦᑎᑦᑎᑦᑎᑦᑎᑦ ᐊᑦᑎᑦᑎᑦᑎᑦ ᐊᑦᑎᑦ ᐊᑦᑎᑦᑎᑦᑎᑦᑎᑦᑎᑦ ᓄᑦᑦᑦᑎᑦ ᐊᑦᑎᑦᑎᑦᑎᑦᑎᑦᑎᑦ ᐊᑦᑎᑦᑎᑦᑎᑦᑎᑦᑎᑦ ᐊᑦᑎᑦᑎᑦᑎᑦᑎᑦᑎᑦ ᐊᑦᑎᑦᑎᑦᑎᑦᑎᑦᑎᑦ ᐊᑦᑎᑦᑎᑦᑎᑦᑎᑦᑎᑦ ᐊᑦᑎᑦᑎᑦᑎᑦᑎᑦᑎᑦ ᐊᑦᑎᑦᑎᑦᑎᑦᑎᑦᑎᑦᑎᑦ (ᐊᑦᑎᑦᑎᑦᑎᑦ ᐊᑦᑎᑦᑎᑦᑎᑦᑎᑦ 342479 [ᐊᑦᑎᑦᑎᑦᑎᑦᑎᑦ] ᐊᑦᑎᑦ 343076 [ᐊᑦᑎᑦᑎᑦᑎᑦ]).



ጋዞላውና፡ኮሎኒያልዊና፡ጋዞ  
 ካል፡ላይና፡፡ “ፍጥና፡፡ ፍጥና፡፡ ፍጥና፡፡”  
 ጋዞና፡፡ ፍጥና፡፡ ፍጥና፡፡ ፍጥና፡፡  
 ፍጥና፡፡ ፍጥና፡፡ ፍጥና፡፡ ፍጥና፡፡  
 ፍጥና፡፡ ፍጥና፡፡ ፍጥና፡፡ ፍጥና፡፡

- 
- The image displays two maps of the Meliadine Extension area. The top map, titled "Meliadine Extension Wind Turbine Locations", shows the proposed locations of wind turbines (indicated by black triangles) and the Meliadine Extension area (indicated by a yellow shaded region). It includes a legend for "AGNICO EAGLE", "CLOOSIE", and "Meliadine Extension". The bottom map is a more detailed planning map showing various land use zones (colored green, yellow, and purple) and infrastructure. It includes a legend for "TYPE", "ROAD", "WATER", and "LAND USE". Both maps include a scale bar and a north arrow.

[illegible][illegible]

[illegible][illegible][illegible]

ወጪ	ሰዓት/ቀን	ቀን	ጊዜ
የጥጥር ጥጥር	ከገቢ ከገቢ	ጥር 6, 2023	2:00-ጥር 4:00-ጥር ስራ
፩ ኃ ስራ-ጥር (Fond du Lac)	ከገቢ ከገቢ	ጥር 7, 2023	2:00-ጥር 4:00-ጥር ስራ
ዘጠኝ ጥጥር	ከገቢ ከገቢ	ጥር 8, 2023	2:00-ጥር 4:00-ጥር ስራ
ርዕስ ጥጥር	ገንዘብ ስራ	ጥር 10, 2023	2:00-ጥር 4:00-ጥር ስራ

[illegible]









$\rho_{CD} < \rho_{\gamma\gamma}^{fb} < \rho_{CD} \sigma_{\gamma\gamma} < \rho_{LL} < \rho_{CD} \rho_{\gamma\gamma} < \rho_{CD} \rho_{\gamma\gamma}$

- [illegible]

 $\sigma\Lambda$ 

- ᐃᓄᓚᒥ ᑲᐃᐱᕐᑐᕐ ᐱᕐርᐅᔪᕐ ᒥᑲᕈᕐᐸᑲᓴᓂᓕ  
ᓂᐱᑲᑲᓂᓴᒥ.

 $\triangleright n^{\zeta b} n n n \sigma^{\zeta b}$ 

- [illegible]

ᾠδὴν ἄλκιον στήθεϊ

- [illegible]



ጋራ ልማት 7: ልዩ ሥልጣን ለሰጠው  
ጋራ ልማት ለሰጠው ሥልጣን ሰጠው ሥልጣን  
በሰጠው ሥልጣን



ፈጠራ-ገጥሞችና ጥራት ማረጋገጫ ምክር ቤቱ ለጥራት ማረጋገጫ

*Δβγδ*

- [illegible]



$$\triangleright^{\mathfrak{b}\mathfrak{b}}\cap^{\mathfrak{b}\mathfrak{b}}\dot{\sigma}^c/\Delta_{\mathcal{C}}\triangleright^{\mathfrak{b}\mathfrak{b}}\mathcal{C}\triangleright\sigma^{\mathfrak{b}}$$

- [illegible]

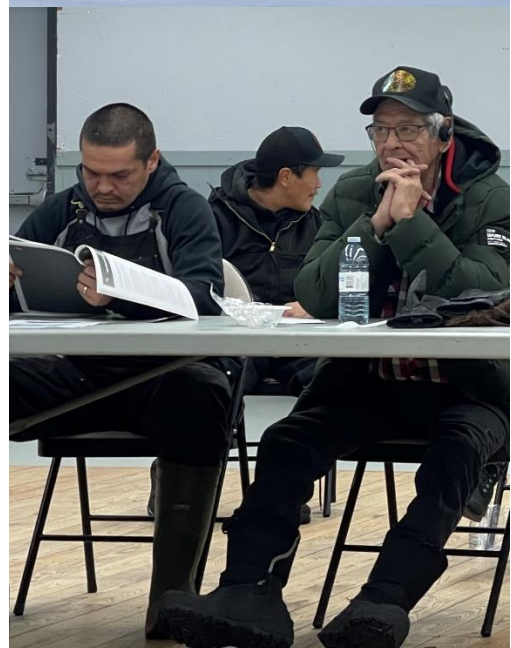
$$\Delta\rho\Delta\tau^{\leq b}\Delta\dot{\sigma}^{\leq c}$$

- [illegible]



ለርቢ ልክ ነፃ ነፃ ገንጽ

- [illegible]

[illegible]

















[illegible]

$\rho_{CD} \propto \rho_{\gamma}^{5b} \propto \sigma^a \propto L \propto \Lambda^c \rho^a \propto \sigma \propto \rho^c$

- [illegible]













$\Delta^c \chi^b \chi^c$ 

- [illegible]

ሥርወ-ጥያቄ አረጋግጥና ለሥራ ልማት  
ለጥያቄዎቼ ልማት

- ሥር ላይ ማሳተፍ ምን ዓይነት ስራ ይሰራል?
- ለምሳሌ ለጥራት ማረጋገጫ ስራ ይሰራል











