

# Meliadine Extension Overview

ᑕᑭᑦᑲᑦᑲᑦ ᑭᑦᑲᑦᑲᑦ  
ᑭᑦᑲᑦᑲᑦᑲᑦ

NIRB Public Hearing  
September 12-20, 2023  
Rankin Inlet, NU

ᑭᑦᑲᑦᑲᑦᑲᑦ ᑭᑦᑲᑦᑲᑦᑲᑦ  
ᑭᑦᑲᑦᑲᑦᑲᑦ 12-20, 2023  
ᑭᑦᑲᑦᑲᑦᑲᑦ, ᑭᑦᑲᑦᑲᑦ



## PRESENTATION SUMMARY

---

- Presentation of the Meliadine Extension
- Public Engagement and Community Response Update
- Environmental Assessment Overview
- Final Written Submission Summary

## ᑕᑭᑦᑲᑦ ᐱᑦᑲᑦ



- ᑕᑭᑦᑲᑦ ᐱᑦᑲᑦ ᑕᑭᑦᑲᑦ ᐱᑦᑲᑦ ᐱᑦᑲᑦ
- ᐱᑦᑲᑦ ᐱᑦᑲᑦ ᐱᑦᑲᑦ ᐱᑦᑲᑦ ᐱᑦᑲᑦ
- ᐱᑦᑲᑦ ᐱᑦᑲᑦ ᐱᑦᑲᑦ ᐱᑦᑲᑦ ᐱᑦᑲᑦ
- ᐱᑦᑲᑦ ᐱᑦᑲᑦ ᐱᑦᑲᑦ ᐱᑦᑲᑦ ᐱᑦᑲᑦ



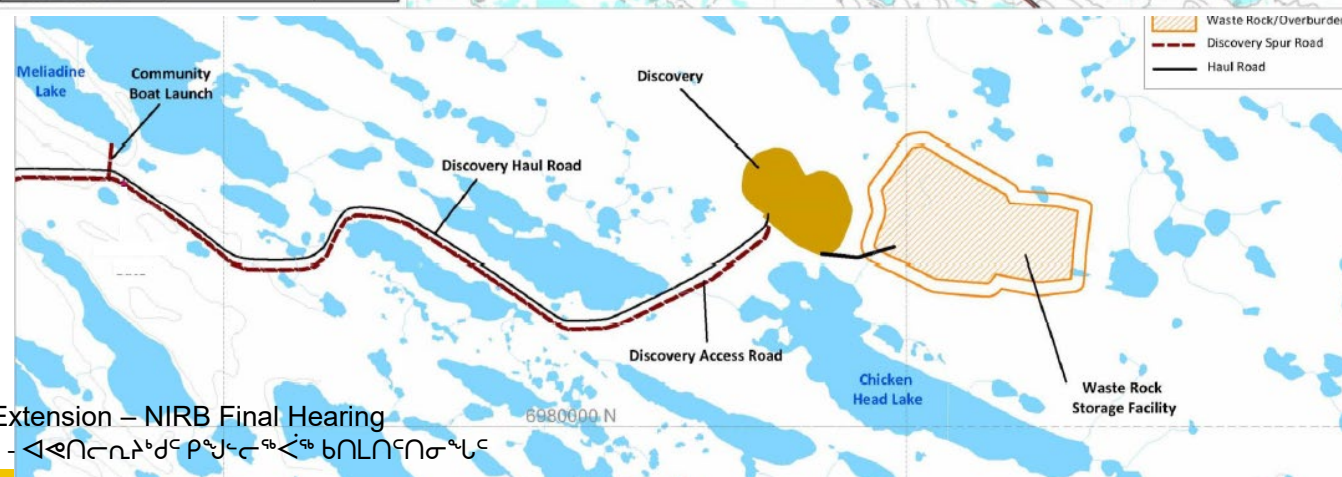
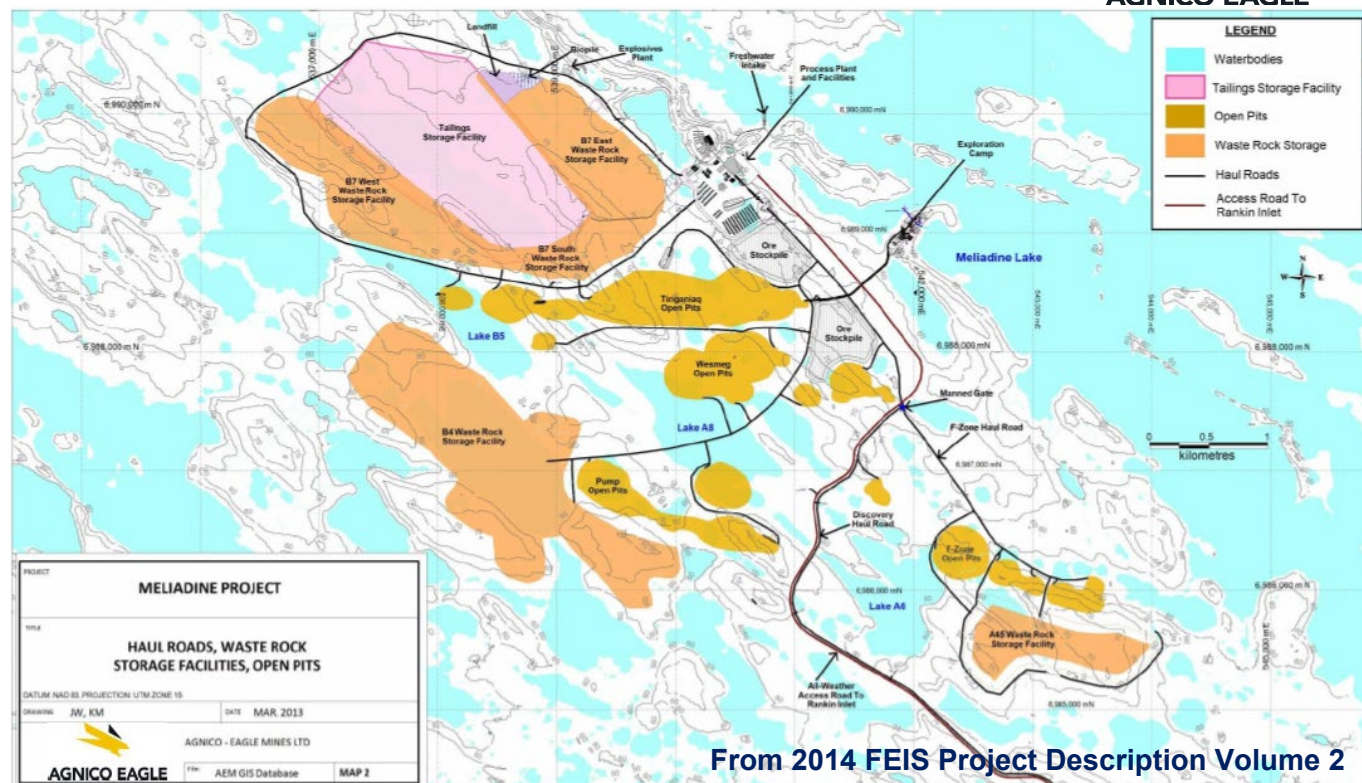
## 2014 FEIS HISTORY

- 2014 assessment included:
  - Tiriganiaq deposit using open pit and underground mining methods
  - Pump, F Zone, Wesmeg, and Discovery deposits using open pit methods
  - All-weather access road
  - Discovery road
  - Ore processing (8,500 tpd)
- 2014 ᑭᐅᔨᕐᕈᓂᑦ ᐃᓚᐅᒻᑦ:
  - ᑲᐱᓄᐅᑦ ᐸᓇᓂᑦ ᐃᓄᑦ ᐅᑦᐅᐃᓄᓴᓴᓂᑦ ᐃᓄᐅᑦ ᐃᓄᐅᑦ ᐅᑦᐅᐃᓄᓴᓴᓂᑦ ᐃᓄᐅᑦ ᐃᓄᐅᑦ
  - Pump-ᑦ, F Zone-ᑦ, Wesmeg-ᑦ, ᐃᓄᐅᑦ Discovery-ᑦ ᐃᓄᐅᑦ ᐃᓄᐅᑦ ᐅᑦᐅᐃᓄᓴᓴᓂᑦ ᐃᓄᐅᑦ ᐃᓄᐅᑦ
  - ᐅᐅᐅᑦ ᐃᓄᐅᑦ ᐃᓄᐅᑦ
  - ᑲᐱᓄᐅᑦ (Discover) ᐃᓄᐅᑦ
  - ᕐᕈᓂᑦ ᐃᓄᐅᑦ (8,500 tpd)

# 2014 FEIS-Γ<sup>c</sup> Λ<sup>γ</sup>ϛ<sup>ϛ</sup>ϛ<sup>ϛ</sup>ϛ<sup>c</sup>



AGNICO EAGLE





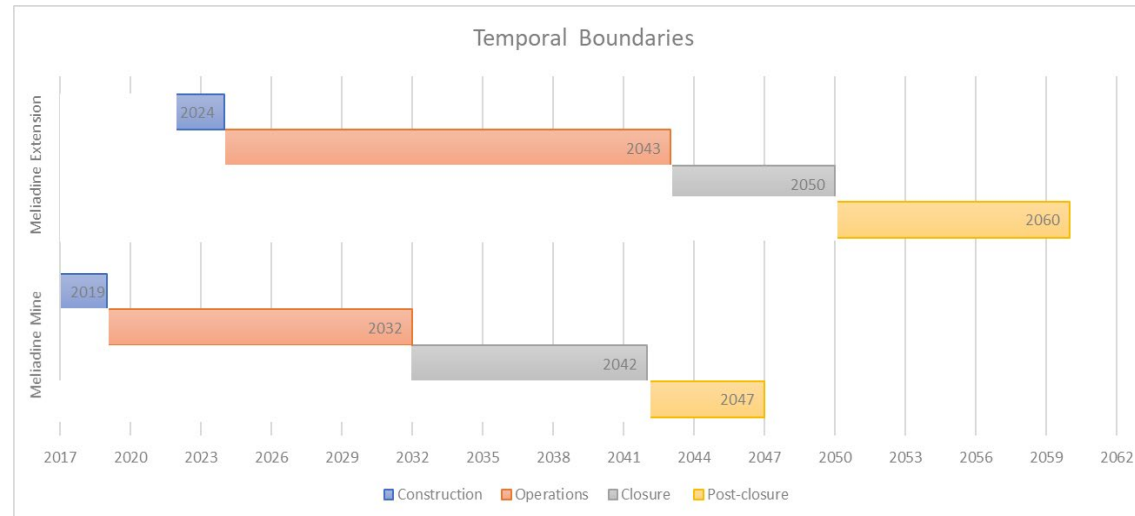
## MELIADINE EXTENSION

- Remains largely within the approved Mine footprint
- Extend the mine of life 11 years to 2043
- **New components** not previously assessed:
  - windfarm (Term and Condition 9)
  - in-pit disposal (considered as an option for the future)

CP<sup>a</sup>↖Δ<sup>b</sup>▷ΔJ↖Δ<sup>c</sup>σ<sup>d</sup>ℓ



- ርዕሰ ምክር ቤቱ ለጥያቄው ምላሽ ለሰጠው ሰነድ ልዩነት ያሳያል
- የሰነዱ ላይ የሚገኝ የጥያቄው ቅጽ በጥቅምት 11 የሚገኝ የጥያቄው ቅጽ 2043-ጋር በማሳሰብ
- **ጥያቄው ለጥያቄው** የሚገኝ የጥያቄው ቅጽ ለሆኑት ሆኖ፡
  - ለጥያቄው ስራ ስለሚገኝ (የጥያቄው ስራ ስለሚገኝ የጥያቄው ስራ 9)
  - ለጥያቄው ስራ ስለሚገኝ (ለጥያቄው ስራ ስለሚገኝ የጥያቄው ስራ ስለሚገኝ)



## MELIADINE EXTENSION

- Continue to mine open pit and underground at Tiriganiaq
- Initiate open pit mining at previously assessed and approved Pump, F Zone, Wesmeg, and Discovery deposits
- Include underground mining of Pump, F Zone, and Discovery deposits
- Extend existing deposit Tiriganiaq-Wolf underground

## ᑕᑭᑦᑲᑦ ᐅᐃᑭᑦᑲᑦ



AGNICO EAGLE

- ᐅᑭᑦᑲᑦᑲᑦ ᑲᑭᑭᑦ ᓄᓇᑭᑦ ᐅᑲᐃᓄᓕᑭᑦ ᐱᓕᓕᑦ ᓄᓇᐅᑦ ᐃᑲᑦᑲᑦ ᑎᓕᓕᑦᑲᑦ
- ᐱᑭᑦᑲᑦᑎᑦᑲᑦ ᓄᓇᑭᑦ ᐅᑲᐃᓄᓕᑭᑦ ᐅᑭᑦᑲᑦᑲᑦ ᑲᐅᑭᑦᑲᑦᑲᑦᑲᑦᑲᑦ ᐱᓕᓕᑦ ᐱᓕᓕᑦᑲᑦᑲᑦᑲᑦ Pump-ᑭᑦ, F Zone-ᑭᑦ, Wesmeg-ᑭᑦ, ᐱᓕᓕᑦ Discovery-ᑭᑦ ᐱᓕᓕᑦᑲᑦᑲᑦ
- ᐃᓕᐅᑲᑦ ᓄᓇᐅᑦ ᐃᑲᑦᑲᑦ ᐅᑭᑦᑲᑦᑲᑦ Pump-ᑭᑦ, F Zone-ᑭᑦ, ᐱᓕᓕᑦ Discovery-ᑭᑦ ᐱᓕᓕᑦᑲᑦᑲᑦ
- ᐅᐃᑭᑦᑲᑦᑲᑦ ᑕᐃᐃᑲᑦᑲᑦ ᐱᓕᓕᑦ ᑎᓕᓕᑦᑲᑦ-ᐱᓕᓕᑦ ᓄᓇᐅᑦ ᐃᑲᑦᑲᑦ

# Airstrip Removal

- An on-site airstrip was included as an alternative of the future in the July 2022 FEIS Addendum submission
- On December 15, 2022, Agnico Eagle made the following commitment (#48):
  - Agnico Eagle has confirmed that the airstrip will no longer be included in the Meliadine Extension Project proposal. Thus, there will be no changes with respect to air transportation relating to the project, and that the current use of the airport in Rankin Inlet will continue
- Any prior technical comments or commitments related to the airstrip are no longer applicable

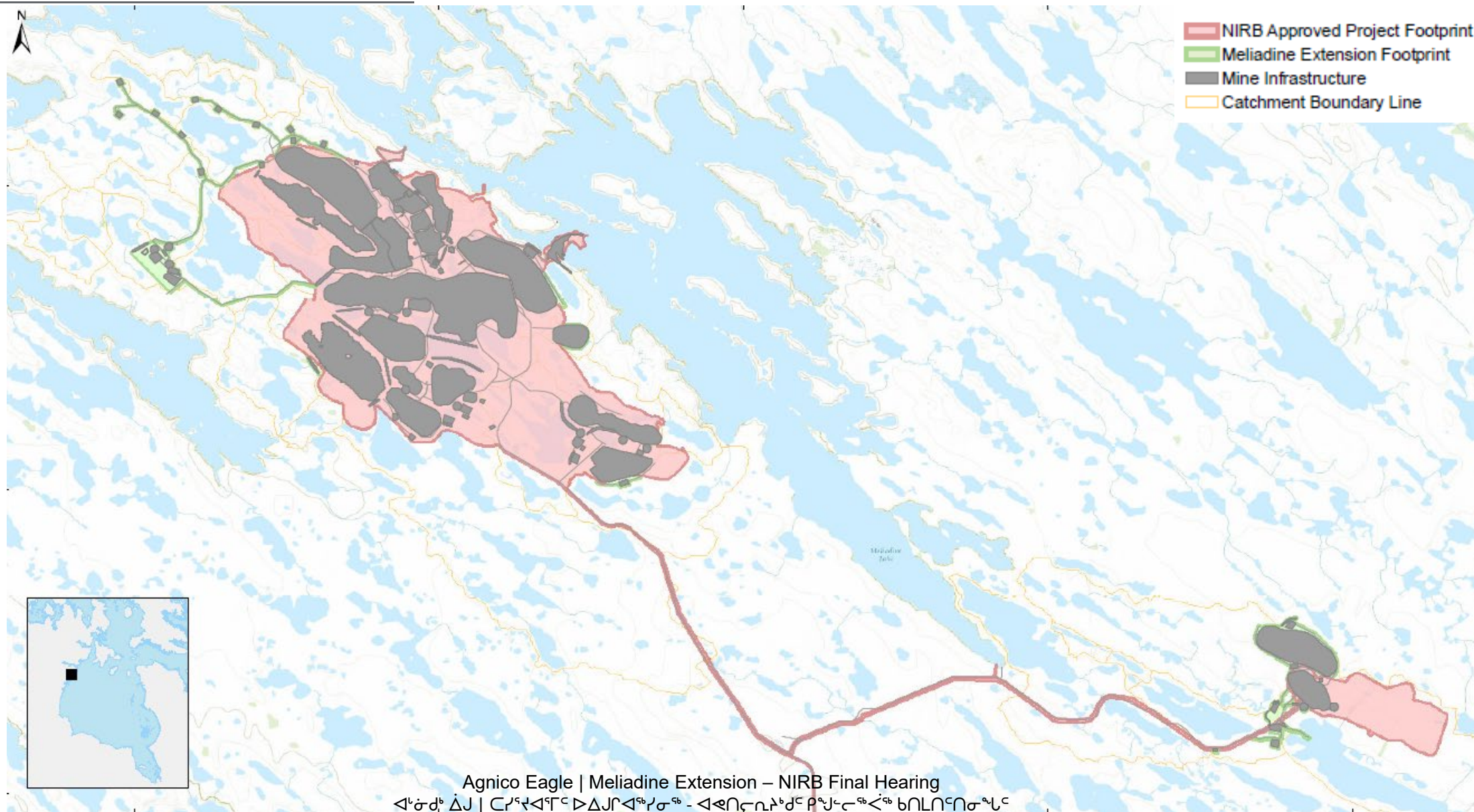
Γ<sup>c</sup> C<sup>q</sup> A<sup>b</sup> Λ<sup>q<sub>b</sub></sup> C▷ σ<sup>q<sub>c</sub></sup> L

- [illegible]



[illegible]

## AGNICO EAGLE





MELIADINE EXTENSION SEQUENCING

ᑕᑭᑦᑲᑦᑲᑦ ᐃᑲᑲᑦᑲᑦ ᐃᑲᑲᑦᑲᑦ ᐃᑲᑲᑦᑲᑦ ᐃᑲᑲᑦᑲᑦ



|                             | 2020 | 2021 | 2022 | 2023 | 2024 | 2025 | 2026 | 2027 | 2028 | 2029 | 2030 | 2031 | 2032 | 2033 | 2034 | 2035 | 2036 | 2037 | 2038 | 2039 | 2040 | 2041 | 2042 | 2043 | 2044 | 2045 | 2046 | 2047-2050 | 2051-2060 |  |  |  |
|-----------------------------|------|------|------|------|------|------|------|------|------|------|------|------|------|------|------|------|------|------|------|------|------|------|------|------|------|------|------|-----------|-----------|--|--|--|
| Approved Mining             |      |      |      |      |      |      |      |      |      |      |      |      |      |      |      |      |      |      |      |      |      |      |      |      |      |      |      |           |           |  |  |  |
| Tiriganiaq Deposit          |      |      |      |      |      |      |      |      |      |      |      |      |      |      |      |      |      |      |      |      |      |      |      |      |      |      |      |           |           |  |  |  |
| Construction                |      |      |      |      |      |      |      |      |      |      |      |      |      |      |      |      |      |      |      |      |      |      |      |      |      |      |      |           |           |  |  |  |
| Infrastructure              |      |      |      |      |      |      |      |      |      |      |      |      |      |      |      |      |      |      |      |      |      |      |      |      |      |      |      |           |           |  |  |  |
| Dewatering & Fish out       |      |      |      |      |      |      |      |      |      |      |      |      |      |      |      |      |      |      |      |      |      |      |      |      |      |      |      |           |           |  |  |  |
| Tiriganiaq Deposit          |      |      |      |      |      |      |      |      |      |      |      |      |      |      |      |      |      |      |      |      |      |      |      |      |      |      |      |           |           |  |  |  |
| Open Pit                    |      |      |      |      |      |      |      |      |      |      |      |      |      |      |      |      |      |      |      |      |      |      |      |      |      |      |      |           |           |  |  |  |
| Underground                 |      |      |      |      |      |      |      |      |      |      |      |      |      |      |      |      |      |      |      |      |      |      |      |      |      |      |      |           |           |  |  |  |
| Wesmeg Deposit              |      |      |      |      |      |      |      |      |      |      |      |      |      |      |      |      |      |      |      |      |      |      |      |      |      |      |      |           |           |  |  |  |
| Open Pit                    |      |      |      |      |      |      |      |      |      |      |      |      |      |      |      |      |      |      |      |      |      |      |      |      |      |      |      |           |           |  |  |  |
| Pump Deposit                |      |      |      |      |      |      |      |      |      |      |      |      |      |      |      |      |      |      |      |      |      |      |      |      |      |      |      |           |           |  |  |  |
| Open Pit                    |      |      |      |      |      |      |      |      |      |      |      |      |      |      |      |      |      |      |      |      |      |      |      |      |      |      |      |           |           |  |  |  |
| Underground                 |      |      |      |      |      |      |      |      |      |      |      |      |      |      |      |      |      |      |      |      |      |      |      |      |      |      |      |           |           |  |  |  |
| F Zone Deposit              |      |      |      |      |      |      |      |      |      |      |      |      |      |      |      |      |      |      |      |      |      |      |      |      |      |      |      |           |           |  |  |  |
| Open Pit                    |      |      |      |      |      |      |      |      |      |      |      |      |      |      |      |      |      |      |      |      |      |      |      |      |      |      |      |           |           |  |  |  |
| Underground                 |      |      |      |      |      |      |      |      |      |      |      |      |      |      |      |      |      |      |      |      |      |      |      |      |      |      |      |           |           |  |  |  |
| Discovery Deposit           |      |      |      |      |      |      |      |      |      |      |      |      |      |      |      |      |      |      |      |      |      |      |      |      |      |      |      |           |           |  |  |  |
| Open Pit                    |      |      |      |      |      |      |      |      |      |      |      |      |      |      |      |      |      |      |      |      |      |      |      |      |      |      |      |           |           |  |  |  |
| Underground                 |      |      |      |      |      |      |      |      |      |      |      |      |      |      |      |      |      |      |      |      |      |      |      |      |      |      |      |           |           |  |  |  |
| Tiriganiaq-Wolf Mining Area |      |      |      |      |      |      |      |      |      |      |      |      |      |      |      |      |      |      |      |      |      |      |      |      |      |      |      |           |           |  |  |  |
| Underground                 |      |      |      |      |      |      |      |      |      |      |      |      |      |      |      |      |      |      |      |      |      |      |      |      |      |      |      |           |           |  |  |  |
| Closure                     |      |      |      |      |      |      |      |      |      |      |      |      |      |      |      |      |      |      |      |      |      |      |      |      |      |      |      |           |           |  |  |  |
| Infrastructure              |      |      |      |      |      |      |      |      |      |      |      |      |      |      |      |      |      |      |      |      |      |      |      |      |      |      |      |           |           |  |  |  |
| Flooding                    |      |      |      |      |      |      |      |      |      |      |      |      |      |      |      |      |      |      |      |      |      |      |      |      |      |      |      |           |           |  |  |  |
| Post-Closure                |      |      |      |      |      |      |      |      |      |      |      |      |      |      |      |      |      |      |      |      |      |      |      |      |      |      |      |           |           |  |  |  |
| Monitoring                  |      |      |      |      |      |      |      |      |      |      |      |      |      |      |      |      |      |      |      |      |      |      |      |      |      |      |      |           |           |  |  |  |

## Key Points on the Windfarm

- Green energy focus for the Government of Canada
- Agnico Eagle and Government of Canada Policy: Reduction of GHG = 30% by 2030; Net-zero by 2050
- Only viable option for Agnico Eagle is a windfarm
- Wind turbines best available technology to reduce GHG emissions resulting from electricity generation
- Project Certificate Term and Condition #9 to reduce GHG
- The plan was never to install 11 turbines at once
  - First phase likely to be 3 to 5 turbines – those closest to the Mine
- Erecting wind turbine is not immediate
  - Will take 2 to 4 years for procurement, shipment of equipment, and then construction

## ᑲᑲᑲᑦᑲᑦ ᑲᑲᑲᑦᑲᑦ ᑲᑲᑲᑦᑲᑦ

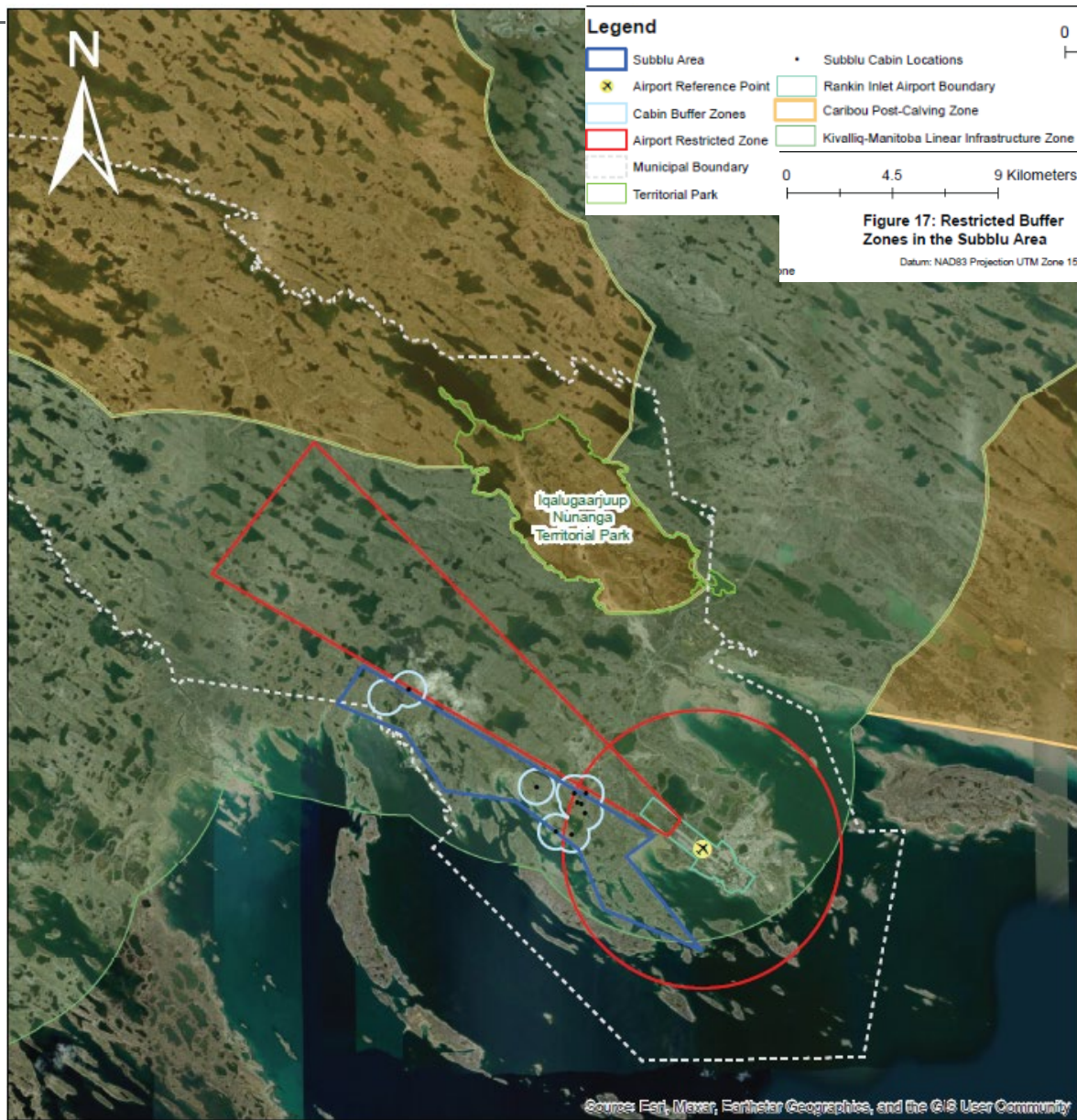
- ᑲᑲᑲᑦᑲᑦ ᑲᑲᑲᑦᑲᑦ ᑲᑲᑲᑦᑲᑦ ᑲᑲᑲᑦᑲᑦ ᑲᑲᑲᑦᑲᑦ ᑲᑲᑲᑦᑲᑦ
- ᑲᑲᑲᑦᑲᑦ ᑲᑲᑲᑦᑲᑦ ᑲᑲᑲᑦᑲᑦ ᑲᑲᑲᑦᑲᑦ ᑲᑲᑲᑦᑲᑦ ᑲᑲᑲᑦᑲᑦ ᑲᑲᑲᑦᑲᑦ ᑲᑲᑲᑦᑲᑦ ᑲᑲᑲᑦᑲᑦ
- ᑲᑲᑲᑦᑲᑦ ᑲᑲᑲᑦᑲᑦ ᑲᑲᑲᑦᑲᑦ ᑲᑲᑲᑦᑲᑦ ᑲᑲᑲᑦᑲᑦ ᑲᑲᑲᑦᑲᑦ ᑲᑲᑲᑦᑲᑦ
- ᑲᑲᑲᑦᑲᑦ ᑲᑲᑲᑦᑲᑦ ᑲᑲᑲᑦᑲᑦ ᑲᑲᑲᑦᑲᑦ ᑲᑲᑲᑦᑲᑦ ᑲᑲᑲᑦᑲᑦ ᑲᑲᑲᑦᑲᑦ
- ᑲᑲᑲᑦᑲᑦ ᑲᑲᑲᑦᑲᑦ ᑲᑲᑲᑦᑲᑦ ᑲᑲᑲᑦᑲᑦ ᑲᑲᑲᑦᑲᑦ ᑲᑲᑲᑦᑲᑦ ᑲᑲᑲᑦᑲᑦ
- ᑲᑲᑲᑦᑲᑦ ᑲᑲᑲᑦᑲᑦ ᑲᑲᑲᑦᑲᑦ ᑲᑲᑲᑦᑲᑦ ᑲᑲᑲᑦᑲᑦ ᑲᑲᑲᑦᑲᑦ ᑲᑲᑲᑦᑲᑦ
- ᑲᑲᑲᑦᑲᑦ ᑲᑲᑲᑦᑲᑦ ᑲᑲᑲᑦᑲᑦ ᑲᑲᑲᑦᑲᑦ ᑲᑲᑲᑦᑲᑦ ᑲᑲᑲᑦᑲᑦ ᑲᑲᑲᑦᑲᑦ
  - ᑲᑲᑲᑦᑲᑦ ᑲᑲᑲᑦᑲᑦ ᑲᑲᑲᑦᑲᑦ ᑲᑲᑲᑦᑲᑦ ᑲᑲᑲᑦᑲᑦ ᑲᑲᑲᑦᑲᑦ ᑲᑲᑲᑦᑲᑦ
- ᑲᑲᑲᑦᑲᑦ ᑲᑲᑲᑦᑲᑦ ᑲᑲᑲᑦᑲᑦ ᑲᑲᑲᑦᑲᑦ ᑲᑲᑲᑦᑲᑦ ᑲᑲᑲᑦᑲᑦ ᑲᑲᑲᑦᑲᑦ
- ᑲᑲᑲᑦᑲᑦ ᑲᑲᑲᑦᑲᑦ ᑲᑲᑲᑦᑲᑦ ᑲᑲᑲᑦᑲᑦ ᑲᑲᑲᑦᑲᑦ ᑲᑲᑲᑦᑲᑦ ᑲᑲᑲᑦᑲᑦ





## Windfarm Locations Studied

- Restricted airport buffer zone, as defined by the Transport Canada Airport Zoning Regulations of the Rankin Inlet Airport = 4 km radius and 15 km length polygon from end of airstrip
- A windfarm is required to be at least 500 m away from infrastructures and cabins

[illegible]

- $\rho_{\text{C}}^{\text{b}} \supset \Gamma^{\text{C}} \Delta^{\text{a}} \Gamma^{\text{C}}$   
 $\rho_{\text{C}}^{\text{b}} \rightarrow \text{NCD} \rightarrow \text{r}^{\text{C}}$ ,  
 $\supset \rho_{\text{C}}^{\text{b}} \supset \sigma^{\text{a}} \supset \text{b} \Delta \Gamma^{\text{C}}$   
 $\Delta^{\text{a}} \rho^{\text{a}} \supset \text{C} \rightarrow \text{r}^{\text{b}} \supset \text{d}^{\text{a}} \supset \Gamma^{\text{C}} \Delta^{\text{a}} \supset$   
 $\rho_{\text{C}}^{\text{b}} \rightarrow \supset \text{r}^{\text{C}} \supset \text{L} \supset \text{L} \supset \text{C} \supset \rho^{\text{a}} \supset$   
 $\text{b}^{\text{a}} \rho^{\text{a}} \supset \sigma^{\text{a}} \supset \Gamma^{\text{C}} \Delta^{\text{a}} \supset = 4$   
 $\rho_{\text{C}}^{\text{b}} \Delta^{\text{a}} \supset \Delta^{\text{a}} \supset \supset \supset 15$   
 $\rho_{\text{C}}^{\text{b}} \Delta^{\text{a}} \supset \text{CP} \rho^{\text{a}} \supset \Delta^{\text{a}} \supset \sigma^{\text{a}}$   
 $\Gamma^{\text{C}} \Delta^{\text{a}} \supset$
- $\Delta^{\text{a}} \rho_{\text{C}}^{\text{b}} \supset \Delta^{\text{a}} \rho_{\text{C}}^{\text{b}} \supset \Delta^{\text{a}} \rho_{\text{C}}^{\text{b}}$   
 $\Delta^{\text{a}} \rho_{\text{C}}^{\text{b}} \supset 500 \Gamma^{\text{C}} \supset \Delta^{\text{a}} \rho_{\text{C}}^{\text{b}}$   
 $\supset \rho_{\text{C}}^{\text{b}} \rho_{\text{C}}^{\text{b}} \supset \Delta^{\text{a}} \rho_{\text{C}}^{\text{b}}$   
 $\Delta^{\text{a}} \rho_{\text{C}}^{\text{b}} \supset \Delta^{\text{a}} \rho_{\text{C}}^{\text{b}}$

- Meliadine Mine Location Driven By:
  - Avoiding siting constraints (caribou, archaeological sites)
  - Maintaining a compact project
  - Maximizing exposure to prevailing winds
  - Minimizing the impact on the environment
  - Project feasibility
  - Capitalizing on fewer restricted zones (i.e., airport)

- ᑕᑭᑦᑲᑦᑲᑦ ᑭᑲᑲᑦᑲᑦ ᑲᑲᑲᑦᑲᑦ ᑲᑲᑲᑦᑲᑦ ᑲᑲᑲᑦᑲᑦ:
  - ᑲᑲᑲᑦᑲᑦ ᑲᑲᑲᑦᑲᑦ ᑲᑲᑲᑦᑲᑦ (ᑲᑲᑲᑦᑲᑦ, ᑲᑲᑲᑦᑲᑦ ᑲᑲᑲᑦᑲᑦ)
  - ᑲᑲᑲᑦᑲᑦ ᑲᑲᑲᑦᑲᑦ
  - ᑲᑲᑲᑦᑲᑦ ᑲᑲᑲᑦᑲᑦ ᑲᑲᑲᑦᑲᑦ ᑲᑲᑲᑦᑲᑦ
  - ᑲᑲᑲᑦᑲᑦ ᑲᑲᑲᑦᑲᑦ ᑲᑲᑲᑦᑲᑦ ᑲᑲᑲᑦᑲᑦ
  - ᑲᑲᑲᑦᑲᑦ ᑲᑲᑲᑦᑲᑦ ᑲᑲᑲᑦᑲᑦ
  - ᑲᑲᑲᑦᑲᑦ ᑲᑲᑲᑦᑲᑦ ᑲᑲᑲᑦᑲᑦ ᑲᑲᑲᑦᑲᑦ ᑲᑲᑲᑦᑲᑦ

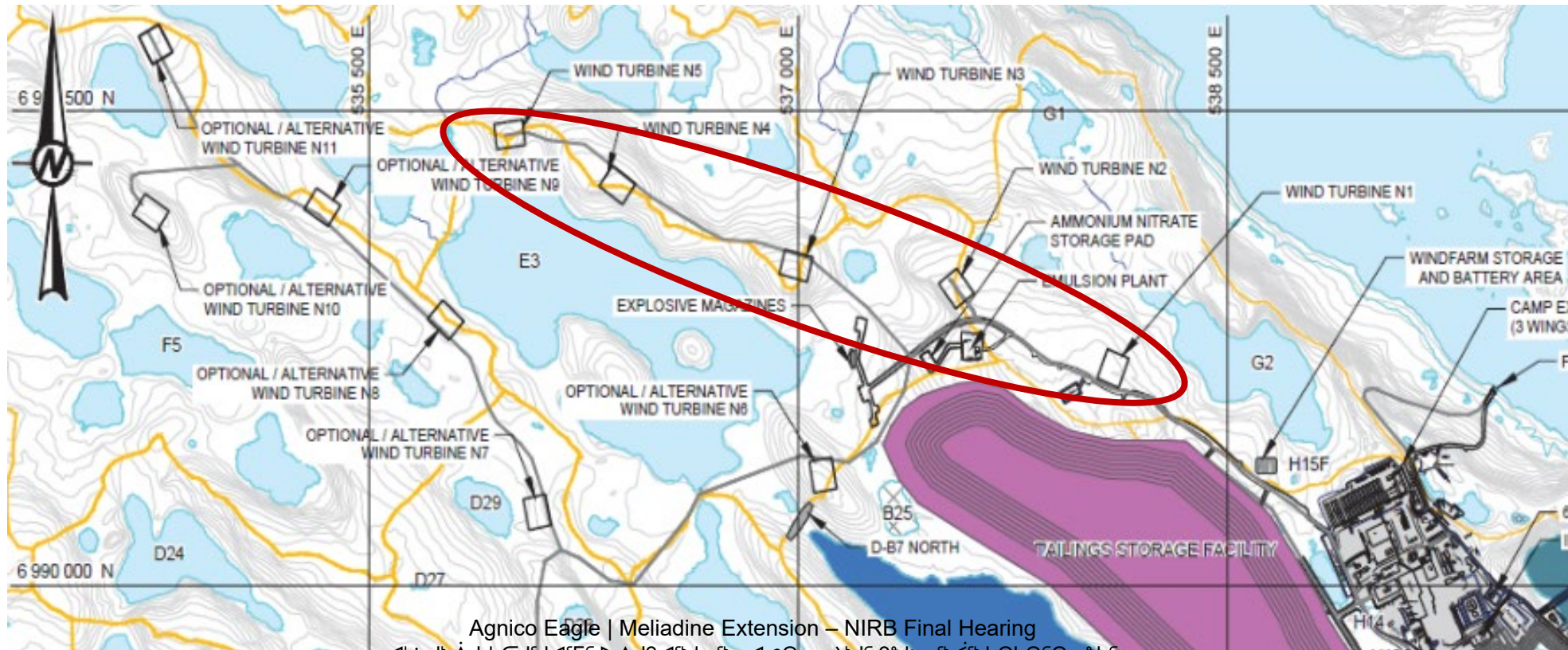


## MELIADINE EXTENSION – WINDFARM

$C \Gamma^a \Delta^a \Gamma^c \triangleright \Delta J \Gamma^a \Gamma^b \sigma^b - \Delta \omega \Gamma^c \triangleright^L L^a \delta \eta \Gamma^c \triangleright \eta$



- Cold temperature operating package
- Operation = year-round and for the duration of the life of Meliadine Mine
- Closure = windfarm will be dismantled and recovered





## Windfarm Placement Viewed from Various Distances

### Viewpoint 5 – Actual

4.2 km North of the Meliadine Plant

ᑲᑦᑲᑦᑲᑦ ᑲᑦᑲᑦᑲᑦ ᑲᑦᑲᑦᑲᑦ ᑲᑦᑲᑦᑲᑦ  
ᑲᑦᑲᑦᑲᑦ ᑲᑦᑲᑦᑲᑦ ᑲᑦᑲᑦᑲᑦ  
ᑲᑦᑲᑦᑲᑦ ᑲᑦᑲᑦᑲᑦ

ᑕᑲᑦᑲᑦ 5 – ᑕᑲᑦᑲᑦ

4.2 ᑲᑦᑲᑦᑲᑦ ᑲᑦᑲᑦᑲᑦ ᑲᑦᑲᑦᑲᑦ  
ᑕᑲᑦᑲᑦ





## Windfarm Placement Viewed from Various Distances

## Viewpoint 5 – Visual Simulation

## 4.2 km North of the Meliadine Plant

[illegible]

**ፎታቢል 5 – ርዕሰ ጉዞ ለጥንታዊ ኢኮኖሚ**  
**4.2 የፖለቲካ ልማት ለፖለቲካ ልማት**  
**ፖለቲካ ልማት**





## Windfarm Placement Viewed from Various Distances

## Viewpoint 8 – Actual

### 5.8 km North of the Meliadine Plant

[illegible]

**Cd<sup>b</sup>H▷<sup>a</sup>A<sup>b</sup>8-Δσ<sup>a</sup>L**

## 5.8 $P \leq \Gamma C \sigma^b \triangleright^a \text{L}^b \text{N} \text{F}^{\leq b} \triangleright \triangleleft^a \text{e}^a \text{L} \sigma^c$ $C \text{F}^{\leq c} \triangleleft^c \Gamma^c$





## Windfarm Placement Viewed from Various Distances

## Viewpoint 8 – Visual Simulation

### 5.8 km North of the Meliadine Plant

[illegible]

၆.၈.၁ နယ်လုပ်ငန်းစဉ် - နယ်လုပ်ငန်းစဉ် အကျဉ်းချုပ်  
 ၆.၈.၂ နယ်လုပ်ငန်းစဉ် အကျဉ်းချုပ်  
 ၆.၈.၃ နယ်လုပ်ငန်းစဉ် အကျဉ်းချုပ်











## Windfarm Placement Viewed from Various Distances

Viewpoint 7 – Visual Simulation

8.3 km North of the Meliadine Plant

ᐱᓄᑦᑦ ᑲᐃᐃᑦᑦᑦᑦ ᐃᓴᑦᑦᑦᑦ  
ᓴᑭᓴᐱᓴᑦᑦ ᐱᓴᑦᑦᑦᑦᑦᑦ ᐅᓴᑦᑦᑦᑦᑦᑦ

ᑕᑭᓴᐱᓴᑦ 7 – ᑕᑭᓴᐱᓴᑦ ᐱᓴᑦᑦᑦᑦᑦᑦ  
8.3 ᑭᑦᑦᑦᑦ ᐅᓴᑦᑦᑦᑦᑦᑦ ᐅᐱᓴᑦᑦᑦᑦ  
ᑕᑭᓴᐱᓴᑦ





## Windfarm Placement Viewed from Various Distances

## Viewpoint 6 – Actual

## 12.6 km North of the Meliadine Plant

[illegible]

**Cd<sup>b</sup>H▷<sup>a</sup>A<sup>b</sup>6 – Δσ<sup>a</sup>L**

## 12.6 $P \subseteq C \Rightarrow \exists L \subseteq C \text{ s.t. } L \subseteq C \text{ and } L \subseteq C$





## Windfarm Placement Viewed from Various Distances

### Viewpoint 6 – Visual Simulation

12.6 km North of the Meliadine Plant

ᑲᑦᑲᑦᑲᑦ ᑲᑦᑲᑦᑲᑦ ᑲᑦᑲᑦᑲᑦ ᑲᑦᑲᑦᑲᑦ  
ᑲᑦᑲᑦᑲᑦ ᑲᑦᑲᑦᑲᑦ ᑲᑦᑲᑦᑲᑦ ᑲᑦᑲᑦᑲᑦ

ᑕᑦᑲᑦᑲᑦ 6 – ᑕᑦᑲᑦᑲᑦ ᑲᑦᑲᑦᑲᑦ  
12.6 ᑲᑦᑲᑦᑲᑦ ᑲᑦᑲᑦᑲᑦ ᑲᑦᑲᑦᑲᑦ  
ᑕᑦᑲᑦᑲᑦ



## Windfarm Placement Viewed from Various Distances

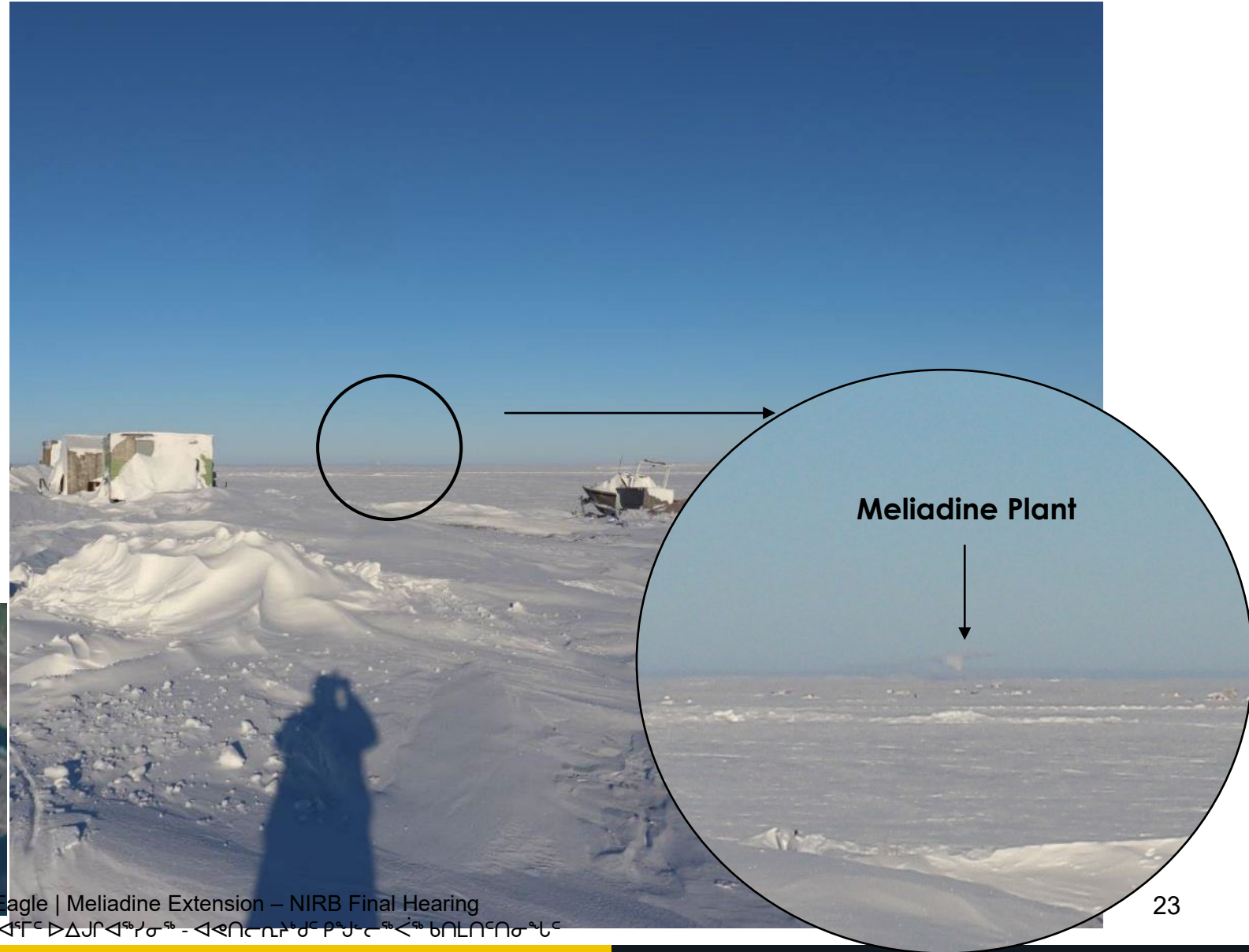
### Viewpoint 1 – Actual

26.3 km from Meliadine Plant  
(Rankin Inlet Cabins)

ᑭᑦᑲᑦᑲᑦ ᑭᑦᑲᑦᑲᑦ ᑭᑦᑲᑦᑲᑦ ᑭᑦᑲᑦᑲᑦ  
ᑭᑦᑲᑦᑲᑦ ᑭᑦᑲᑦᑲᑦ ᑭᑦᑲᑦᑲᑦ ᑭᑦᑲᑦᑲᑦ

ᑕᑦᑦᑲᑦᑲᑦ 1 – ᑭᑦᑲᑦᑲᑦ

26.3 ᑭᑦᑲᑦᑲᑦ ᑭᑦᑲᑦᑲᑦ ᑭᑦᑲᑦᑲᑦ  
(ᑭᑦᑲᑦᑲᑦ ᑭᑦᑲᑦᑲᑦ ᑭᑦᑲᑦᑲᑦ)







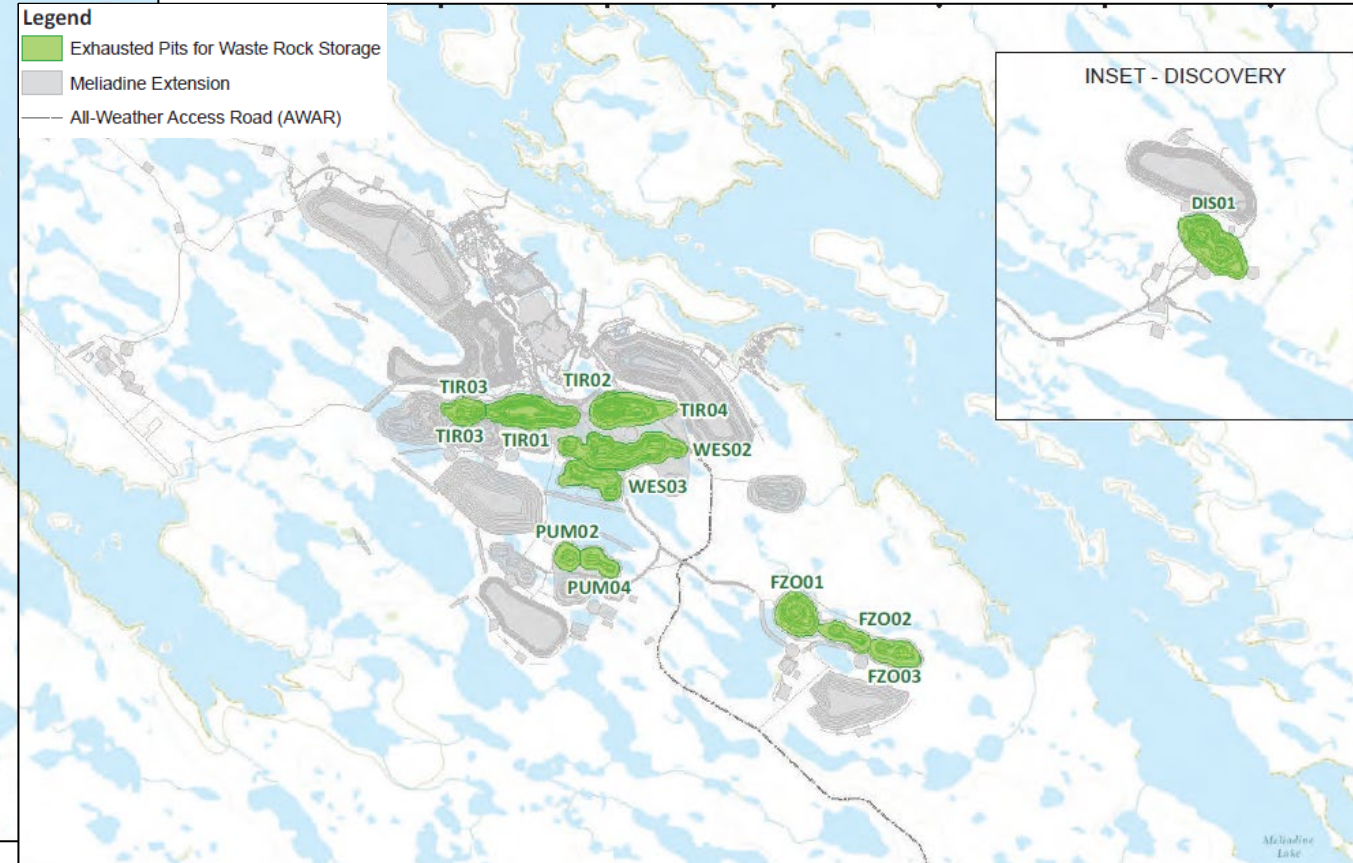
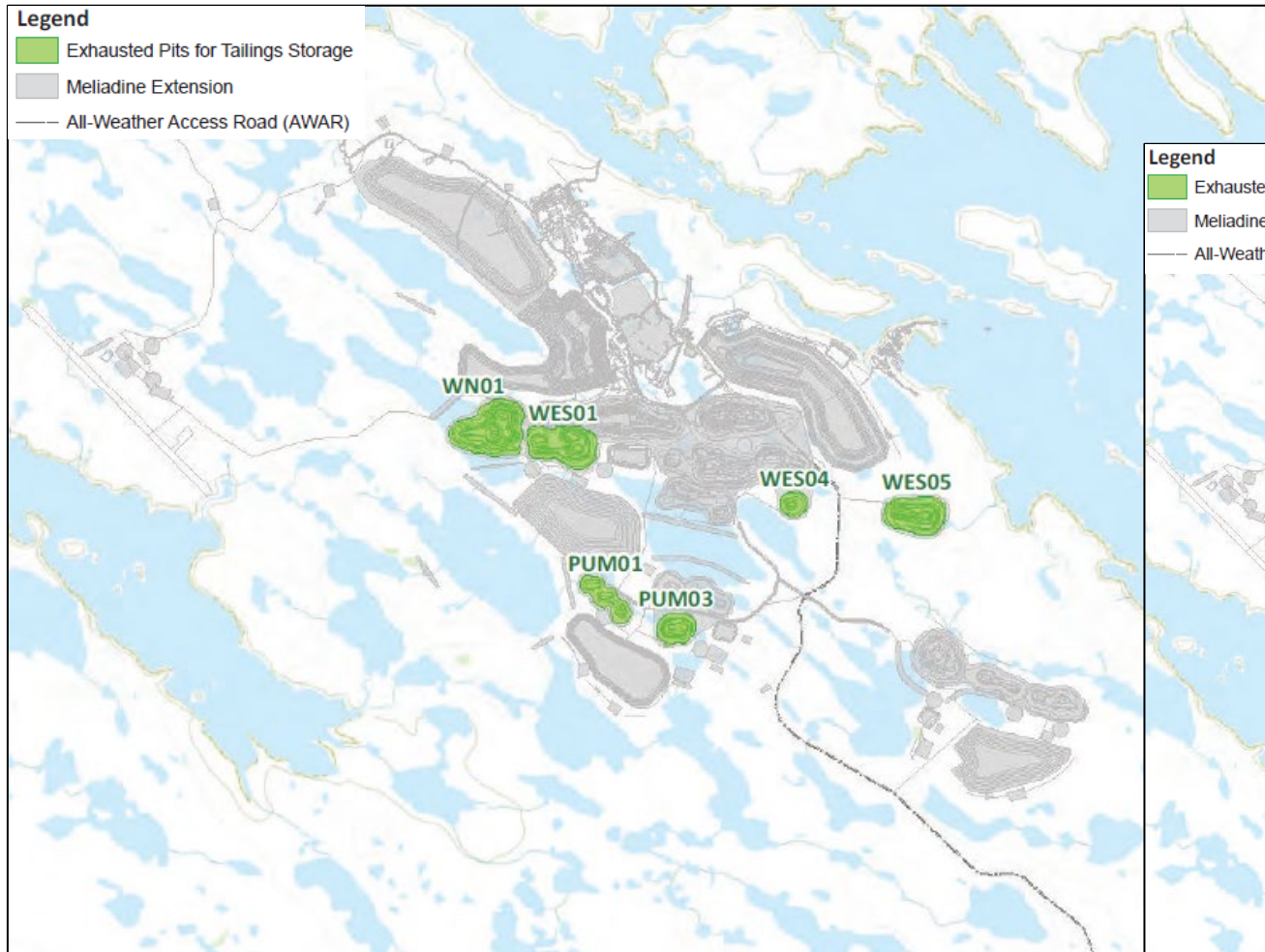
- Evaluating locations for in-pit tailings and waste rock deposition
- Benefits
  - Optimize the site footprint
  - Within areas that has previously been impacted
  - Reduces the surface area impacted
- Refinements further evaluated as part of the NWB Type A Water Licence Amendment

[illegible]

- [illegible]

# MELIADINE EXTENSION – ALTERNATIVE IN-PIT DISPOSAL

ᑕᑭᑦᑲᑦᑲᑦ ᑭᑦᑲᑦᑲᑦ ᑭᑦᑲᑦᑲᑦ - ᑭᑦᑲᑦᑲᑦ ᑭᑦᑲᑦᑲᑦ ᑭᑦᑲᑦᑲᑦ  
ᑭᑦᑲᑦᑲᑦ ᑭᑦᑲᑦᑲᑦ ᑭᑦᑲᑦᑲᑦ



## MELIADINE EXTENSION

- Borrow Sources:
  - Up to 12 new sites identified
- Fuel:
  - 7.4 ML added to what is already approved
- Domestic Waste:
  - New landfill within Discovery WRSF
  - New landfarms at Wesmeg and Discovery deposits

## ᑕᑭᑦᑲᑦᑲᑦ ᑲᑲᑭᑦᑲᑦ ᑲᑲᑭᑦᑲᑦ



- ᑲᑲᑭᑦᑲᑦ ᑲᑲᑭᑦᑲᑦ ᑲᑲᑭᑦᑲᑦ :
  - 12 ᑲᑲᑭᑦᑲᑦ ᑲᑲᑭᑦᑲᑦ ᑲᑲᑭᑦᑲᑦ
- ᑲᑲᑭᑦᑲᑦ:
  - ᑲᑲᑭᑦᑲᑦ 7.4 ᑲᑲᑭᑦᑲᑦ ᑲᑲᑭᑦᑲᑦ ᑲᑲᑭᑦᑲᑦ
- ᑲᑲᑭᑦᑲᑦ ᑲᑲᑭᑦᑲᑦ ᑲᑲᑭᑦᑲᑦ:
  - ᑲᑲᑭᑦᑲᑦ ᑲᑲᑭᑦᑲᑦ ᑲᑲᑭᑦᑲᑦ ᑲᑲᑭᑦᑲᑦ ᑲᑲᑭᑦᑲᑦ
  - ᑲᑲᑭᑦᑲᑦ ᑲᑲᑭᑦᑲᑦ ᑲᑲᑭᑦᑲᑦ ᑲᑲᑭᑦᑲᑦ ᑲᑲᑭᑦᑲᑦ



# Public Engagement and Community Response Update

ᐃᓂᐅᑦᑕᓂᑦ ᐃᓕᐅᑎᑦᑎᓂᑦᑕᑦ  
ᐱᑦᐱᓂᑦ ᓂᓕᑦᑕᑦ  
ᐅᑕᑦᑕᐅᑦᑕᑦ  
ᐅᑦᑕᑦᑕᑦᑕᑦᑕᑦᑕᑦᑕᑦ



AGNICO EAGLE



- 12 focus group meetings
- 12 meetings
- 4 public sessions at the tent at kilometer 15
- 5 hybrid in-person-virtual public sessions
- Public Open houses in
  - 3 Rankin Inlet
  - 1 Coral Harbour
  - 1 Whale Cove
- 6 Site Visits
- Participated in NIRB information sessions:
  - 1 Black Lake
  - 1 Fond du Lac
  - 1 Hatchet Lake
  - 1 Tadoule Lake



- [illegible]





- Ongoing support for community programs, training opportunities, and educational initiatives
- Inclusion of Traditional Place Names into our projects guided by the Kivalliq Elders Advisory Committee
- Minimizing mine footprint
- Continuing to comply with monitoring and management plans
- Adjusted plans where required for Meliadine Extension

ငါတို့အတွက် အသုံးပြုဆောင်ရွက်ပေးပါ။

- [illegible]

## Developed a Kivalliq Elders Advisory Committee

- 21 Elders from Baker Lake, Chesterfield Inlet, Rankin Inlet, Whale Cove, and Arviat

## Itivia / Tasirjuaq Cabin Owner Committee

- Topics discussed in the past years:
  - Meliadine Extension
  - Cabin identification on maps
  - Road to Discovery information sharing
  - Discovery Road updates



የፎርም ልዩነት ምልክት  
በባለሥልጣን ስር

- 21  $\Delta^a \mathbf{a} \mathbf{b} \mathbf{c} \mathbf{d} \mathbf{e} \mathbf{f} \mathbf{g} \mathbf{h} \mathbf{i} \mathbf{j} \mathbf{k} \mathbf{l} \mathbf{m} \mathbf{n} \mathbf{o} \mathbf{p} \mathbf{q} \mathbf{r} \mathbf{s} \mathbf{t} \mathbf{u} \mathbf{v} \mathbf{w} \mathbf{x} \mathbf{y} \mathbf{z}$ ,  
 $\Delta^b \mathbf{a} \mathbf{b} \mathbf{c} \mathbf{d} \mathbf{e} \mathbf{f} \mathbf{g} \mathbf{h} \mathbf{i} \mathbf{j} \mathbf{k} \mathbf{l} \mathbf{m} \mathbf{n} \mathbf{o} \mathbf{p} \mathbf{q} \mathbf{r} \mathbf{s} \mathbf{t} \mathbf{u} \mathbf{v} \mathbf{w} \mathbf{x} \mathbf{y} \mathbf{z}$ ,  
 $\Delta^c \mathbf{a} \mathbf{b} \mathbf{c} \mathbf{d} \mathbf{e} \mathbf{f} \mathbf{g} \mathbf{h} \mathbf{i} \mathbf{j} \mathbf{k} \mathbf{l} \mathbf{m} \mathbf{n} \mathbf{o} \mathbf{p} \mathbf{q} \mathbf{r} \mathbf{s} \mathbf{t} \mathbf{u} \mathbf{v} \mathbf{w} \mathbf{x} \mathbf{y} \mathbf{z}$ ,  
 $\Delta^d \mathbf{a} \mathbf{b} \mathbf{c} \mathbf{d} \mathbf{e} \mathbf{f} \mathbf{g} \mathbf{h} \mathbf{i} \mathbf{j} \mathbf{k} \mathbf{l} \mathbf{m} \mathbf{n} \mathbf{o} \mathbf{p} \mathbf{q} \mathbf{r} \mathbf{s} \mathbf{t} \mathbf{u} \mathbf{v} \mathbf{w} \mathbf{x} \mathbf{y} \mathbf{z}$

**ΔΝΑ-ΔΣ<sup>c</sup> / ΓΡ<sup>c</sup>-ΔΓ<sup>c</sup> Δ<sup>b</sup>-Δ<sup>c</sup>Δ<sup>a</sup>Δ<sup>c</sup>Δ<sup>c</sup>Δ<sup>c</sup>**  
**ΕΠΙΧΕΙΡΗΣΙΑΚΟ ΠΛΑΝΟ**

- [illegible]



# Environmental Assessment Overview

ᐃᓕᓂᓐᓂᓐ ᓂᐅᐱᓐᓂᓐ  
ᐱᓐᓂᓐᓂᓐ



AGNICO EAGLE



- Aligned with the 2012 Guidelines issued for Meliadine Mine
- Methods consistent with 2014 FEIS, and 2018 and 2020 FEIS Addenda
- Only three new primary pathways:
  - air quality to assess the windfarm
  - noise to assess the windfarm
  - terrestrial birds to assess the windfarm
- Overall, represents a negligible change from the 2014 FEIS and approved Meliadine Mine activities
- Cumulative effects are considered not significant

- ᑭᑦᑲᑦᑲᑦᑲᑦ ᑭᑦᑲᑦᑲᑦᑲᑦ 2012 ᑭᑦᑲᑦᑲᑦᑲᑦᑲᑦ ᑭᑦᑲᑦᑲᑦᑲᑦ ᑭᑦᑲᑦᑲᑦᑲᑦ ᑭᑦᑲᑦᑲᑦᑲᑦᑲᑦ
- ᑭᑦᑲᑦᑲᑦᑲᑦ ᑭᑦᑲᑦᑲᑦᑲᑦᑲᑦ 2014 FEIS-ᑭᑦ, ᑭᑦᑲᑦᑲᑦᑲᑦ 2018-ᑭᑦ ᑭᑦᑲᑦᑲᑦᑲᑦ 2020 FEIS-ᑭᑦ ᑭᑦᑲᑦᑲᑦᑲᑦᑲᑦ
- ᑭᑦᑲᑦᑲᑦᑲᑦᑲᑦ ᑭᑦᑲᑦᑲᑦᑲᑦ ᑭᑦᑲᑦᑲᑦᑲᑦᑲᑦ ᑭᑦᑲᑦᑲᑦᑲᑦᑲᑦ:
  - ᑭᑦᑲᑦᑲᑦᑲᑦᑲᑦᑲᑦ ᑭᑦᑲᑦᑲᑦᑲᑦᑲᑦ ᑭᑦᑲᑦᑲᑦᑲᑦᑲᑦᑲᑦ ᑭᑦᑲᑦᑲᑦᑲᑦᑲᑦᑲᑦ
  - ᑭᑦᑲᑦᑲᑦᑲᑦᑲᑦ ᑭᑦᑲᑦᑲᑦᑲᑦᑲᑦ ᑭᑦᑲᑦᑲᑦᑲᑦ ᑭᑦᑲᑦᑲᑦᑲᑦᑲᑦ
  - ᑭᑦᑲᑦᑲᑦᑲᑦᑲᑦ ᑭᑦᑲᑦᑲᑦᑲᑦ ᑭᑦᑲᑦᑲᑦᑲᑦᑲᑦ ᑭᑦᑲᑦᑲᑦᑲᑦᑲᑦ
- ᑭᑦᑲᑦᑲᑦᑲᑦᑲᑦᑲᑦ, ᑭᑦᑲᑦᑲᑦᑲᑦᑲᑦᑲᑦ ᑭᑦᑲᑦᑲᑦᑲᑦᑲᑦᑲᑦ 2014 FEIS-ᑭᑦ ᑭᑦᑲᑦᑲᑦᑲᑦ ᑭᑦᑲᑦᑲᑦᑲᑦᑲᑦ ᑭᑦᑲᑦᑲᑦᑲᑦᑲᑦᑲᑦ
- ᑭᑦᑲᑦᑲᑦᑲᑦᑲᑦᑲᑦ ᑭᑦᑲᑦᑲᑦᑲᑦᑲᑦᑲᑦ ᑭᑦᑲᑦᑲᑦᑲᑦᑲᑦᑲᑦ ᑭᑦᑲᑦᑲᑦᑲᑦᑲᑦᑲᑦ



- No negative significant lasting impacts
- Positive lasting socio-economic benefits
- Reduction of greenhouse gases
- Detailed focus at the Type A Water Licence Amendment phase
- Robust Monitoring and Management Plans are in place to capture Meliadine Extension

- ᑲᑲᑲᑦᑲᑦᑲᑦ ᑭᑲᑲᑦᑲᑦᑲᑦ ᑭᑲᑲᑦᑲᑦᑲᑦ ᑭᑲᑲᑦᑲᑦᑲᑦ
- ᑲᑲᑲᑦᑲᑦᑲᑦ ᑭᑲᑲᑦᑲᑦᑲᑦ ᑭᑲᑲᑦᑲᑦᑲᑦ ᑭᑲᑲᑦᑲᑦᑲᑦ
- ᑲᑲᑲᑦᑲᑦᑲᑦ ᑭᑲᑲᑦᑲᑦᑲᑦ ᑭᑲᑲᑦᑲᑦᑲᑦ ᑭᑲᑲᑦᑲᑦᑲᑦ
- ᑲᑲᑲᑦᑲᑦᑲᑦ ᑭᑲᑲᑦᑲᑦᑲᑦ ᑭᑲᑲᑦᑲᑦᑲᑦ ᑭᑲᑲᑦᑲᑦᑲᑦ
- ᑲᑲᑲᑦᑲᑦᑲᑦ ᑭᑲᑲᑦᑲᑦᑲᑦ ᑭᑲᑲᑦᑲᑦᑲᑦ ᑭᑲᑲᑦᑲᑦᑲᑦ
- ᑲᑲᑲᑦᑲᑦᑲᑦ ᑭᑲᑲᑦᑲᑦᑲᑦ ᑭᑲᑲᑦᑲᑦᑲᑦ ᑭᑲᑲᑦᑲᑦᑲᑦ

# Final Written Submission Summary

ᐃᓄᓕᓕᓐᓂᓐ ᐃᐃᓕᓐᓂᓐ  
ᐃᓄᓂᓂᓐ



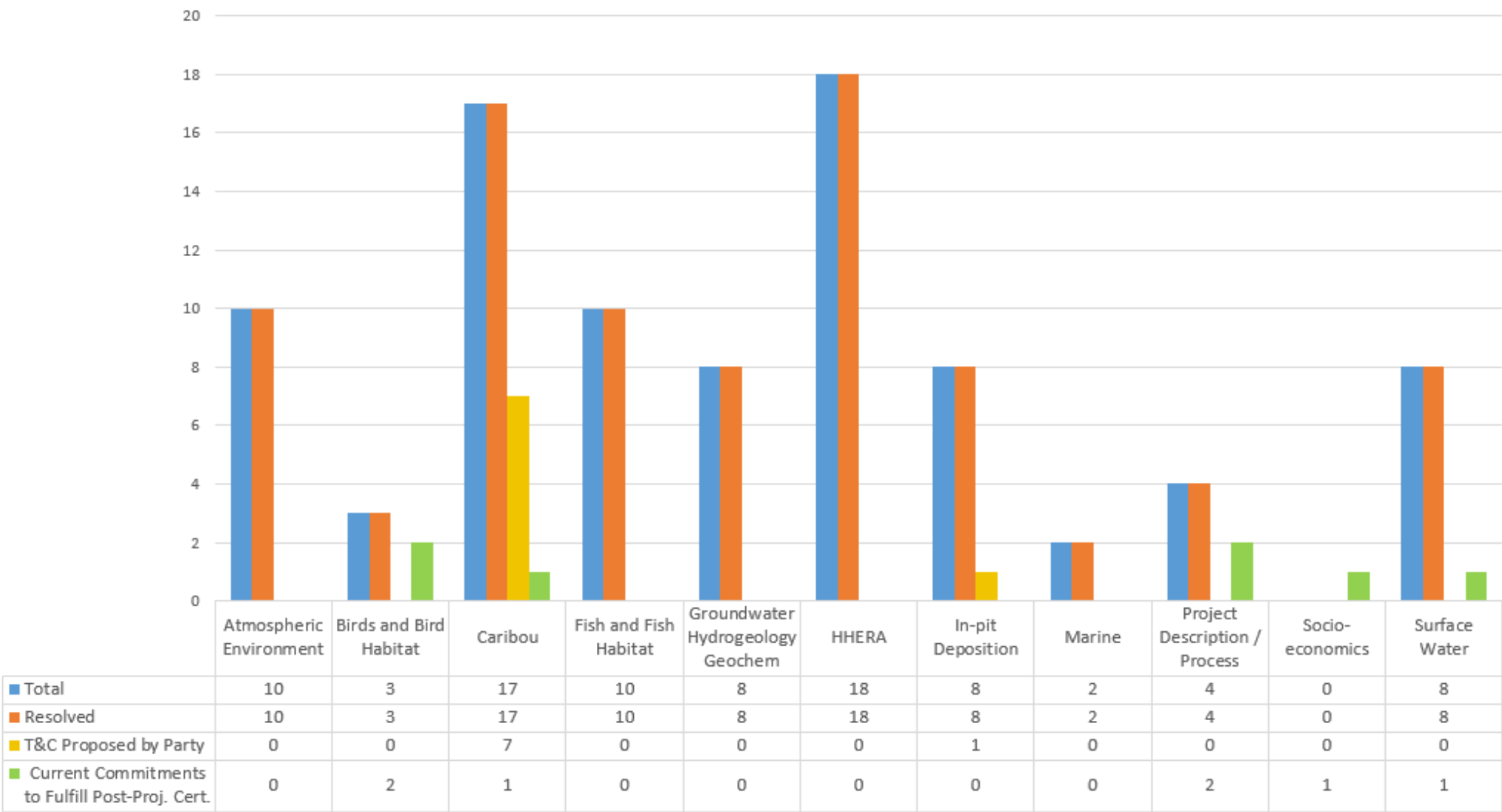


- Significant work with parties following the March Pre-hearing Conference:
  - Windfarm
  - Caribou
  - In-pit Deposition
  - Water Management
  - Fisheries

- [illegible]



Final Written Submissions - Status of Resolution







ᐱᓃᓂᓂᓐᓂᓐ

Matna  
Thank you

**Trading Symbol:**  
AEM on TSX & NYSE

**Investor Relations:**  
416-847-8665  
[info@agnicoeagle.com](mailto:info@agnicoeagle.com)

[agnicoeagle.com](http://agnicoeagle.com)



**AGNICO EAGLE**