

Athabasca Denesų́liné NéNé Land Corporation (ADNLC)

Technical Session Presentation for the
NIRB Public Hearing for Agnico Eagle
Mines' Meliadine Extension Project Proposal
September 12-20, 2023, Rankin Inlet



Introduction

The Athabasca Denesų́liné Néné Land Corporation (ADNLC) represents the three Athabasca Denesų́liné (AD) First Nations of Fond du Lac, Black Lake, and Hatchet Lake.

AD communities share Nuhenéné, our lands, with the Qamanirjuak Caribou



R. Robillard



We are caribou people

- Our communities are fundamentally interconnected with the Qamanirjuaq caribou herd and rely on the herd for food security, and to continue our way of life.
- Any impacts that contribute to the ongoing population decline will have a direct and severe adverse impact on our people, rights, culture, and way of life.

This is about our future generations. We have lived with the caribou since time immemorial.

-Athabasca Denesųliné member



We are caribou people

- The calving and post calving-grounds are places that Athabasca Denesųliné (AD) have been taught are sacred and must be respected. These are locations where the herd is particularly vulnerable.
- The Qamanirjuaq herd is declining and has been assessed as “medium-high vulnerability” by the Beverly & Qamanirjuaq Caribou Management Board



We are caribou people

- Athabasca Denesų́liné communities have already experienced loss due to the declining Bathurst and Beverly caribou herds.
- The Qamanirjuak herd is the last and only herd that AD people can depend on.

The Western herd and the Northern herds are gone. They don't come to our territories anymore. If the Eastern herd goes, I don't know what would happen. If the caribou disappear, we'd have a hard time surviving...We need to protect the East Caribou.

- Athabasca Denesų́liné Land User



The background of the slide features a stylized landscape. At the top, a light blue sky contains several birds in flight. Below the sky, a range of low, rolling hills is depicted in shades of tan and beige. On the left side, a cluster of evergreen trees is shown in a lighter, semi-transparent style. In the bottom right foreground, a brown caribou stands on a dark blue horizontal band that represents water or a path.

Specific Comments and Recommendations

The AD do not support additional development in the post-calving and calving grounds, and do not support extending the life of the mine.

Specific Comments:

1. New information on overlap with caribou calving and post-calving grounds needs to be assessed
2. Wind turbines too risky
3. Terrestrial Advisory Group

The background of the slide features a stylized landscape. At the bottom, there is a dark blue horizontal band representing water. Above this, a brown silhouette of a caribou stands on a light tan ground. In the distance, there are rolling hills and mountains in shades of tan and light brown. To the left, several evergreen trees are depicted in a light tan color. The sky is a gradient from light blue at the top to white near the horizon. Three birds are shown in flight: two are white and one is dark brown, all positioned in the upper portion of the slide.

1. Caribou monitoring and protection not adequate

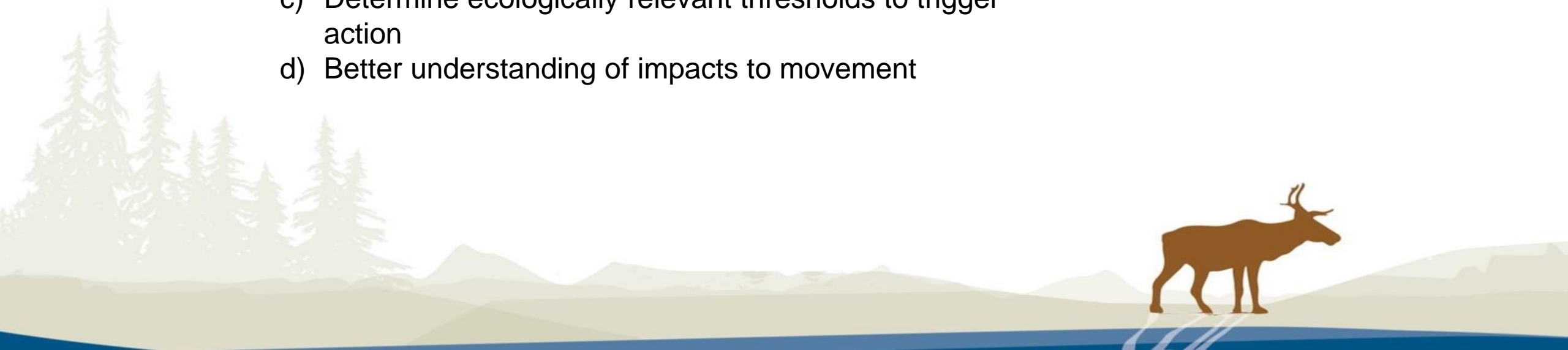
- Analysis of changing overlap of the calving and post-calving grounds with the mine and Regional Study Area were not provided until May 23, 2023
- The 2022 and 2014 FEIS did not consider impacts to caribou in the context of the increased overlap with post-calving and calving grounds
- A new assessment needs to be undertaken to assess new potential impacts

1. Caribou monitoring and protection not adequate

Recommendations

Before any new approvals, we need more information about how new caribou interaction with mine site may impact caribou.

1. A new analysis needs to be undertaken to
 - a) Understand potential impacts on calving and post-calving grounds
 - b) Need to understand zone of influence
 - c) Determine ecologically relevant thresholds to trigger action
 - d) Better understanding of impacts to movement



1. Caribou monitoring and protection not adequate

The background of the slide features a stylized landscape. On the left, there are several evergreen trees of varying heights. In the center and right, there are rolling hills or mountains in shades of tan and brown. A caribou silhouette is standing on the right side of the foreground. The sky is a gradient of light blue, with a few white birds flying in the upper right corner.

Recommendations continued

2. Request a meeting of Elders from all potentially impacted communities to discuss the changes in caribou use within mine site
3. Calving grounds should be named as a stand alone VEC/VSEC to ensure they are not overlooked and adequate monitoring and protection measures are put in place
4. A protocol needs to be developed to trigger heightened protections when calving grounds are within the Regional Study Area

We are caribou people

Our Elders have taught us that we do not disturb caribou water crossings or areas such as the calving grounds and post-calving grounds where the caribou are most vulnerable. Those areas are sacred and must be respected and protected.

- Athabasca Denesų́liné member

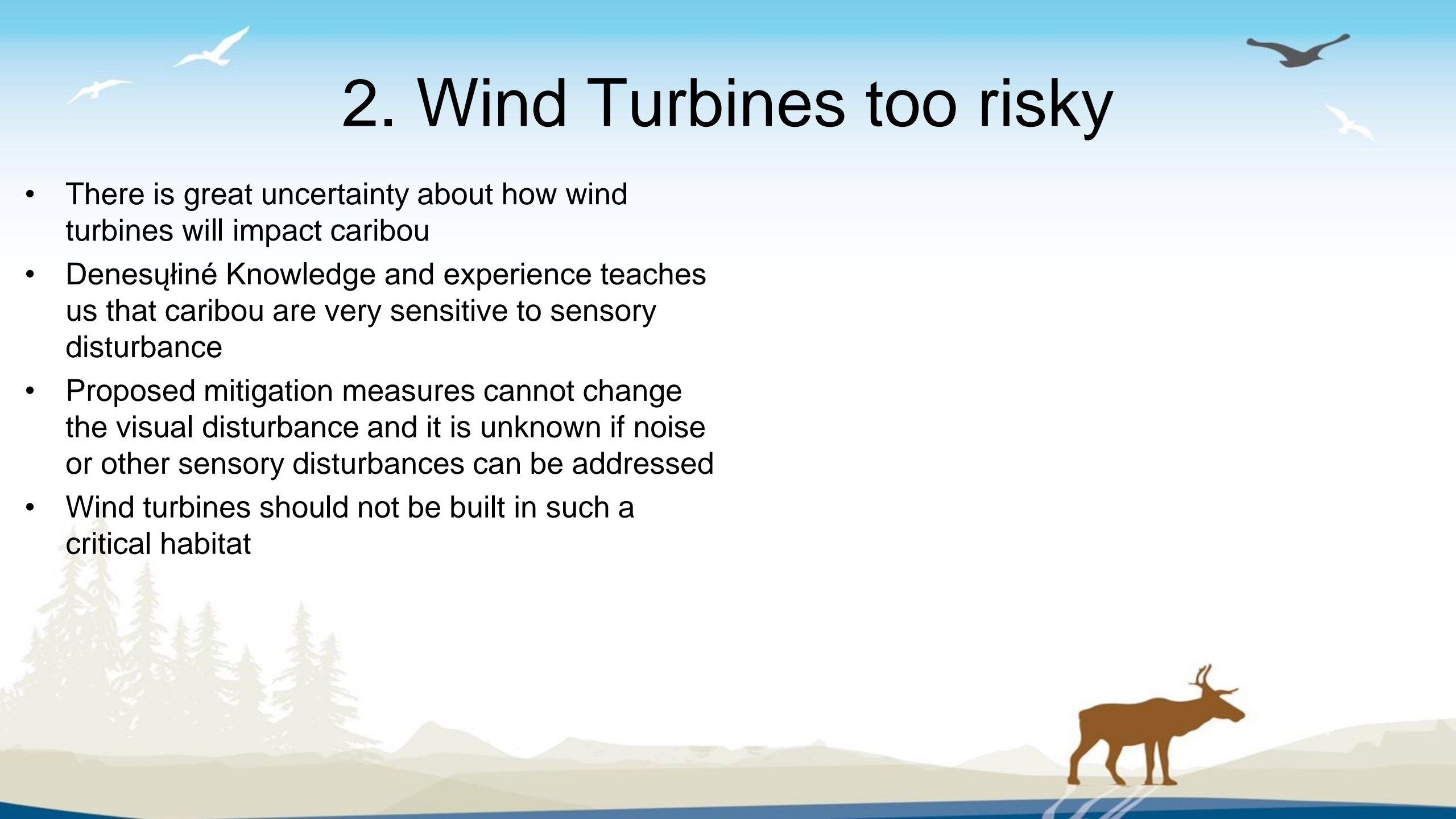


Ron Robillard



2. Wind Turbines too risky

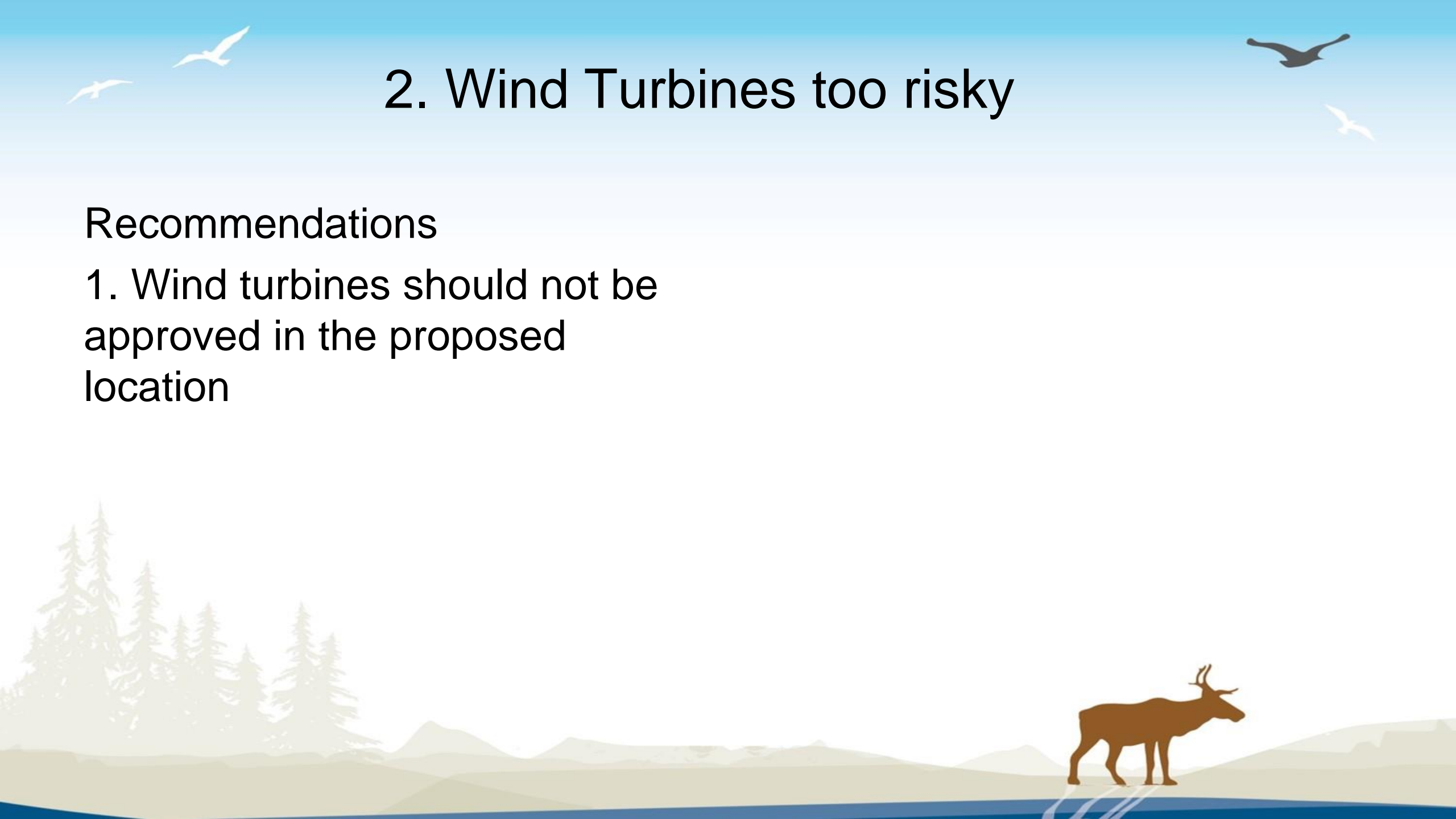
- There is great uncertainty about how wind turbines will impact caribou
- Denesųliné Knowledge and experience teaches us that caribou are very sensitive to sensory disturbance
- Proposed mitigation measures cannot change the visual disturbance and it is unknown if noise or other sensory disturbances can be addressed
- Wind turbines should not be built in such a critical habitat



2. Wind Turbines too risky

Recommendations

1. Wind turbines should not be approved in the proposed location



We are caribou people

When you are in the barren lands, you can see for a long ways. Even a small tree is visible from far away. These wind turbines will be huge on this landscape. The caribou are sensitive to that. They sense things that humans can't. They have sensory abilities beyond what we do.

- Athabasca Denesųliné member



R. Robillard





Terrestrial Advisory Group

- Agnico Eagle denied the AD request to join the Terrestrial Advisory Group (TAG)
- Only rationale provided was that our communities are located far from the mine
- The distance between our communities and the mine are the distance the caribou travel. Anything that may impact the caribou here, impacts caribou through their entire annual range, and therefore, impacts our people.



Terrestrial Advisory Group

- Many important discussions and decisions about caribou protection are made through the TAG

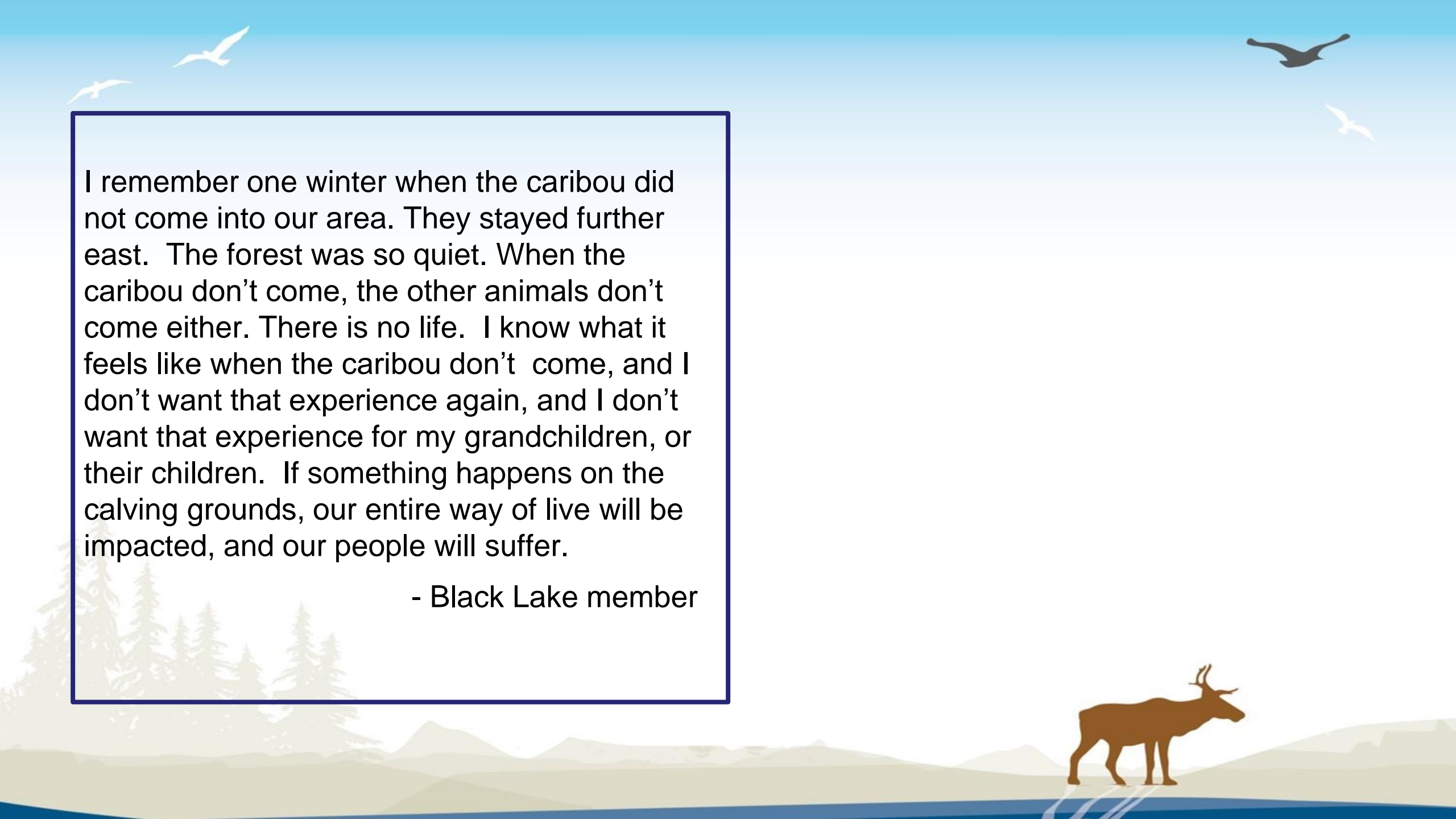
Recommendation:

Athabasca Denesųliné requests an updated Term and Condition #132 that ensures that impacted communities like ours cannot be denied participation in the TAG.

Conclusions

- AD communities do not support approvals that will increase mine life or new developments in this critical habitat
- Before any decisions are made we need more information about caribou protection given new usage of area that was not addressed in the FEIS
- Wind Turbines are not compatible with calving and post-calving grounds and should not be approved in the current location
- The TAG is cited often as an important tool in caribou protection and AD participation in the group is an important part of protecting AD rights.



The background of the slide features a stylized landscape. In the foreground, there is a dark blue body of water. Behind it, rolling hills and mountains are depicted in shades of tan and beige. To the left, a cluster of evergreen trees is shown in a light greenish-yellow hue. The sky is a gradient of light blue, with several birds in flight. Three white birds are on the left side, and two dark grey birds are on the right side.

I remember one winter when the caribou did not come into our area. They stayed further east. The forest was so quiet. When the caribou don't come, the other animals don't come either. There is no life. I know what it feels like when the caribou don't come, and I don't want that experience again, and I don't want that experience for my grandchildren, or their children. If something happens on the calving grounds, our entire way of live will be impacted, and our people will suffer.

- Black Lake member





Thank You Marsi



For any questions or follow-up
please contact:

Ron Robillard

Athabasca Denesų́liné NÉNÉ
Land Corporation (ADNLC)

Phone: (306) 953-7287

Email: rrobillard@adnlc.ca

