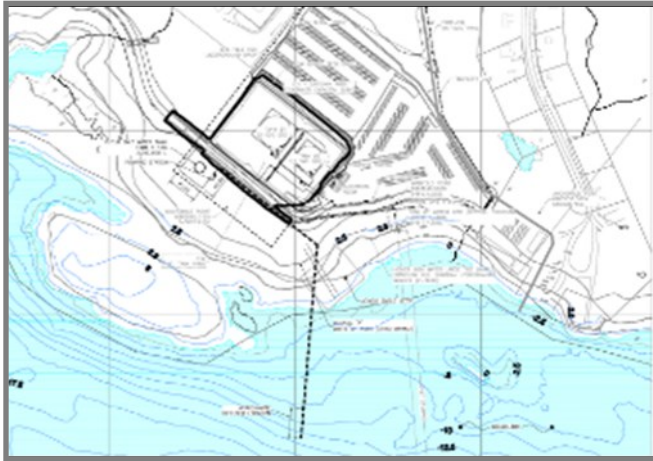


1





$\Delta \rho^{\text{a}} \Gamma^{\text{c}}$   $\Lambda$   $C$   $n$   $\Delta$   $n$   $\triangleright$   $\nabla^{\text{c}}$ :

- [illegible]

[illegible][illegible]

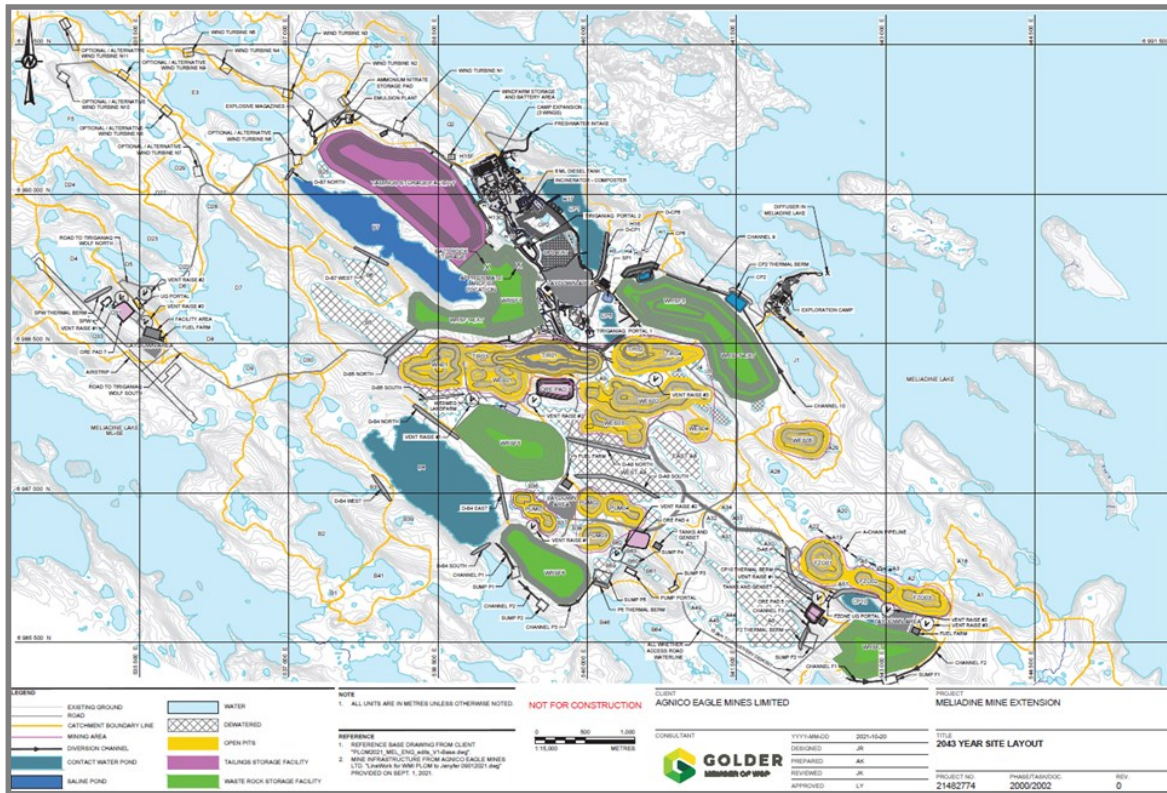
- [illegible]

[illegible][illegible]

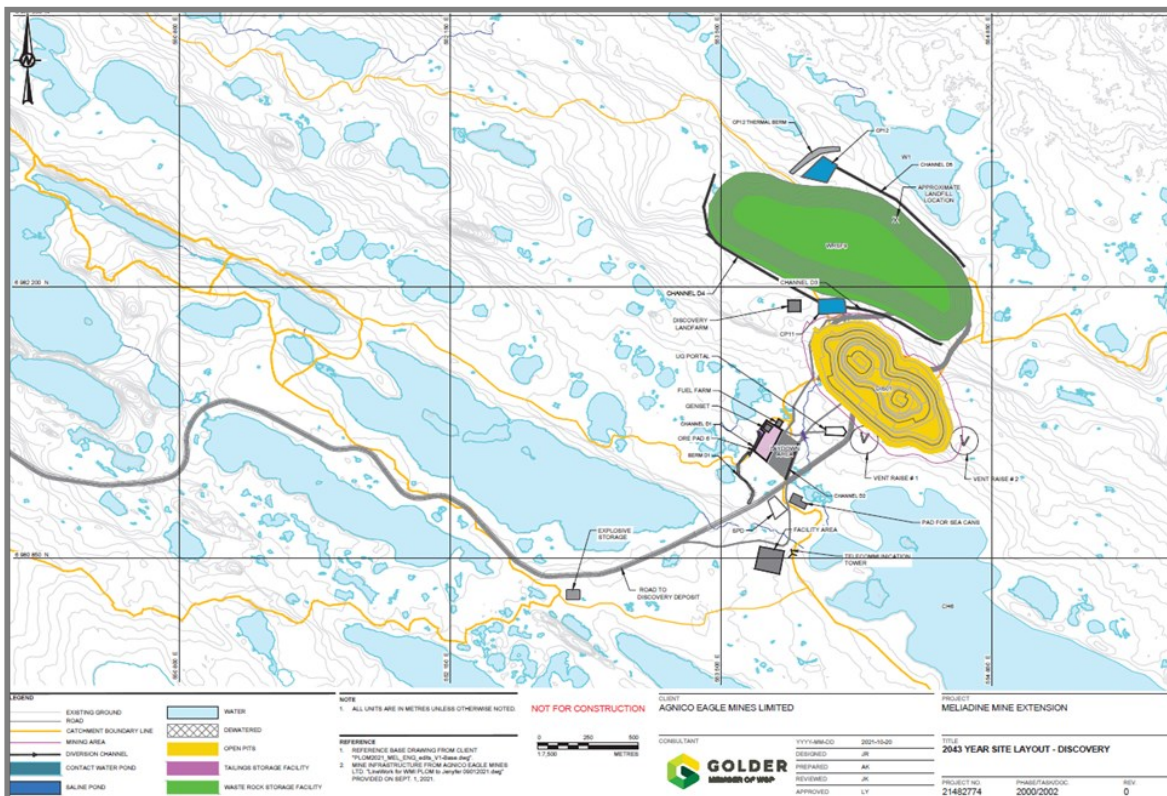
- [illegible]

[illegible]





2043 YEAR SITE LAYOUT: 2000/2002



2043 YEAR SITE LAYOUT - DISCOVERY







# ርዕሰ ስራዎችን በሚመለከቱ ጉዳዮች

- ርዕሰ ስራዎችን ለማሳካት 1.6.2

## መግቢያ በሚሰጥበት

- ጉዳዮችን በሚመለከቱ ጉዳዮች  
(ጉዳዮችን በሚመለከቱ ጉዳዮች  
በሚመለከቱ ጉዳዮች):

- የሰራተኛው ስራ
- ለሰራተኛው ስራ
- ለሰራተኛው ስራ

## መግቢያ

የሚመለከቱ ጉዳዮችን:

- የሰራተኛው ስራ
- ለሰራተኛው ስራ

በሚመለከቱ ጉዳዮች

የሚመለከቱ ጉዳዮችን ለሰራተኛው ስራ

በሚመለከቱ ጉዳዮች

የሚመለከቱ ጉዳዮችን ለሰራተኛው ስራ



የሰራተኛው ስራ ጉዳዮችን ለሰራተኛው ስራ



የሰራተኛው ስራ ጉዳዮችን ለሰራተኛው ስራ

## ለሰራተኛው ስራ ጉዳዮችን ለሰራተኛው ስራ

የሰራተኛው ስራ ጉዳዮችን ለሰራተኛው ስራ

ለሰራተኛው ስራ ጉዳዮችን ለሰራተኛው ስራ

በሚመለከቱ ጉዳዮች:

- ጉዳዮችን በሚመለከቱ ጉዳዮች
- ለሰራተኛው ስራ ጉዳዮችን ለሰራተኛው ስራ
- የሰራተኛው ስራ ጉዳዮችን ለሰራተኛው ስራ

1 ለሰራተኛው ስራ ጉዳዮችን ለሰራተኛው ስራ

2 ለሰራተኛው ስራ ጉዳዮችን ለሰራተኛው ስራ

1 ለሰራተኛው ስራ ጉዳዮችን ለሰራተኛው ስራ



የሰራተኛው ስራ ጉዳዮችን ለሰራተኛው ስራ



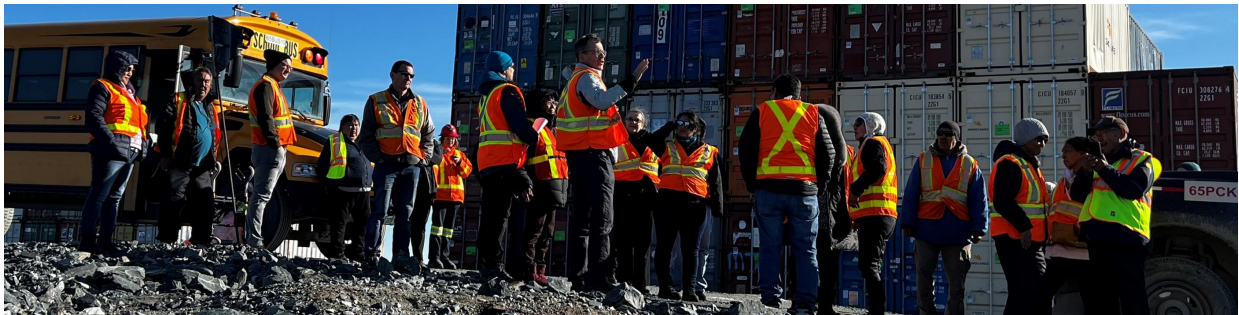
የሰራተኛው ስራ ጉዳዮችን ለሰራተኛው ስራ



- CdbJ 𐎠𐎠𐎠𐎠𐎠𐎠 1.6.2.4 𐎠𐎠𐎠𐎠𐎠𐎠 A

[illegible]

ΔοΔ<sup>c</sup> ὁc<sup>b</sup>ΠC▷<sup>c</sup>



**ΔοΔ<sup>c</sup> Δ<sup>c</sup>Λ<sup>a</sup>Γ<sup>c</sup> Cδ<sup>b</sup>Ϸ<sup>b</sup>ΠCΔ<sup>c</sup>**



ወደፊት ለሚመጡ ስራዎች ለሚፈጸሙ ስራዎች ለሚፈጸሙ ስራዎች



ΔοΔ<sup>c</sup> ὁc<sup>b</sup>ηC▷ϵ<sup>c</sup>

[illegible]

Δο<sup>α</sup>σ<sup>β</sup> ὁ<sup>γ</sup>ν<sup>δ</sup>ν<sup>ε</sup>ν<sup>ς</sup>:

$\text{m}^{\text{c}} \text{ } ^{\text{b}}\Delta^{\text{c}} \text{ } ^{\text{d}}\Delta^{\text{e}} \text{ } ^{\text{f}}\Delta^{\text{g}}$

የፎርም ልዩነት በጥንቃቄ

മുഖ്യ ലക്ഷ്യം

Δοτλῶς b<sup>b</sup>d<sup>c</sup> bαCΓ

$\Delta \nabla \cap C_{\text{L}} \neq \emptyset$  ከሚገኝ

$\Delta L^{\epsilon} \Gamma \triangleright C \ulcorner \lambda^b d^c \urcorner \text{ b a C } \Gamma$

$$\triangle^a \sigma \triangle^c b^a r^c \supset \neg \neg^b d^c \quad b a c \Gamma$$

$\Delta^a \Gamma^c \zeta \zeta^{-1} \tau^b d^c$  b.c.f.

$\partial \Gamma \triangleright C \cap L^b d^c$   $b \in C \Gamma$

ბ<sup>ა</sup>რ<sup>ა</sup>ც<sup>ა</sup>შ<sup>ა</sup>  $\triangleleft$  ა<sup>ა</sup>შ<sup>ა</sup>ა<sup>ა</sup>ა<sup>ა</sup> ბ<sup>ა</sup>ა<sup>ა</sup>ა<sup>ა</sup>

ካልገረ ልጅጅ ህጋዊነቱን ማረጋገጥ

[illegible]

ᐱᑕᐸᑦ ᐅᓇᑖᑦ ᑲᐅᙳᔭᑲᐢᒃᑲᑦ

$\sigma\sigma$  သေငြိမ်းမှု  $d\langle\Delta\rangle/dt \propto -\Delta^2$



- CđJ Đσ<sup>b</sup>bc<sup>4</sup> 4

[illegible]

A group of people are seated at a long table in a room with large windows. In the foreground, a man in a blue shirt is speaking into a microphone. Next to him is a man in a black jacket with 'H4' on the sleeve, looking down. Further right, a woman in a purple top and glasses is looking towards the camera. To her right, another woman in a maroon top is looking down. The table has several microphones, water bottles, and nameplates. The background shows large windows and some equipment.

**ፈልጋችሁት ምን ነው?**

၁၉၈၈-၈၉ ခုနှစ်

“ᐃᑦᐱᑦᐱᑦ ᐃᑦᐱᑦ ᐃᑦᐱᑦᐱᑦᐱᑦ  
ᐃᑦᐱᑦᐱᑦᐱᑦᐱᑦ ᐃᑦᐱᑦᐱᑦᐱᑦᐱᑦᐱᑦ  
ᐃᑦᐱᑦᐱᑦᐱᑦᐱᑦᐱᑦᐱᑦᐱᑦᐱᑦ  
ᐃᑦᐱᑦᐱᑦᐱᑦᐱᑦᐱᑦᐱᑦᐱᑦᐱᑦ  
ᐃᑦᐱᑦᐱᑦᐱᑦᐱᑦᐱᑦᐱᑦᐱᑦᐱᑦ  
ᐃᑦᐱᑦᐱᑦᐱᑦᐱᑦᐱᑦᐱᑦᐱᑦᐱᑦ  
ᐃᑦᐱᑦᐱᑦᐱᑦᐱᑦᐱᑦᐱᑦᐱᑦᐱᑦ ”

—C. ነፋሰቱ ደረፊ ርዕሰ ልማት ምክር ቤቱ  
የህግ ጋራ ስራ ምክር ቤቱ

ለፍርሃት ምክር ቤቱ

▷ **အရင်းအမြစ်**:

[illegible]

The infographic illustrates the flow of energy from a renewable source to a vehicle. At the top, a blue wind turbine is shown. A large, light blue curved arrow points from the turbine down to a blue silhouette of a car at the bottom. The car is depicted carrying a load of light blue stones or fuel. A circular inset on the left side of the arrow shows a caribou in a natural setting, likely representing the source of the fuel (wood or biomass) used in the car's engine.

- D<sup>9</sup>bP<sup>a</sup>Q<sup>c</sup>Δ<sup>d</sup>bPL/LZ<sup>e</sup>

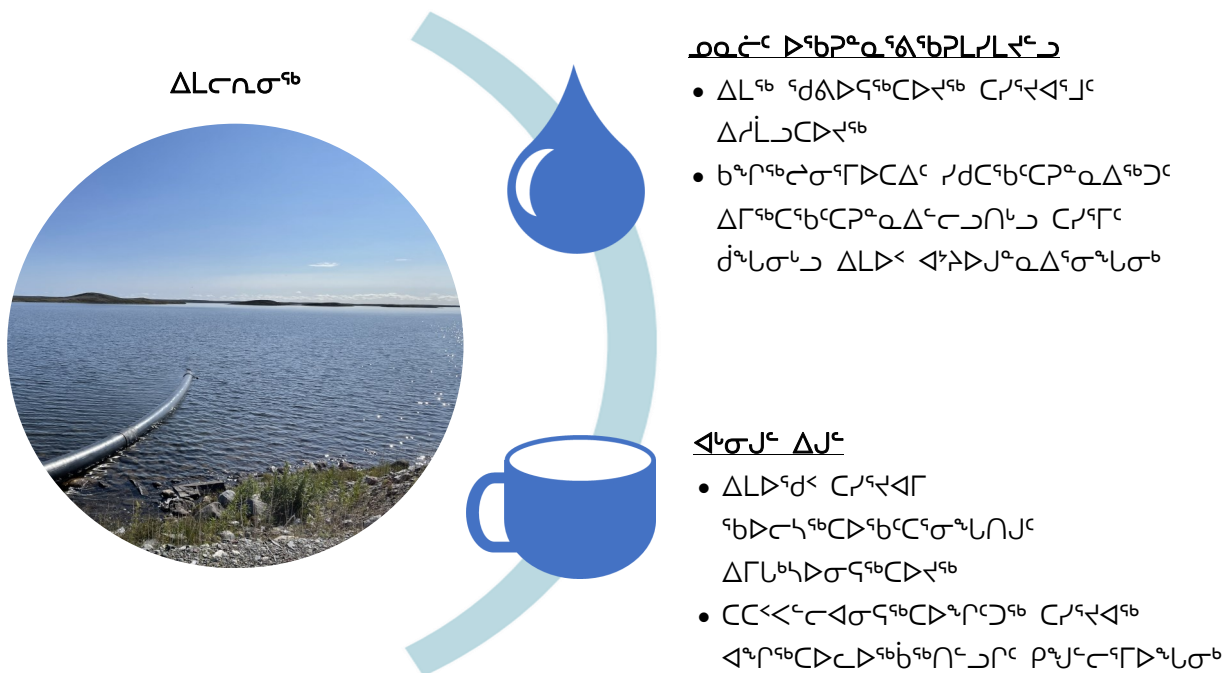
- [illegible]

- ስለጥናታዊ ዕውቀት ለሰጠው አስተዋፅኦ  
የሚጨምር የጥናታዊ ዕውቀት
- ስለጥናታዊ ዕውቀት ለሰጠው አስተዋፅኦ  
የሚጨምር የጥናታዊ ዕውቀት

[illegible]















- Cd<sub>2</sub>Br<sub>2</sub> ▷σ<sup>b</sup>b<sub>c</sub>◁σ<sup>c</sup>c<sub>c</sub> 5, 6 ◁<sub>L</sub> 7

[illegible]

