



B2GOLD

B2Gold-ը մաքուր ինվեստիցիոն ընկերություն –
Արժեքի ընդլայնում, Լուծումներ ՎԼԾ
Վճարողներին, Երկարաժամկետ
Վերադարձ

TSX **BTO**
NYSE AMERICAN **BTG**
NSX **B2G**

Մաքուր Վերադարձի Երկարաժամկետ Ընկերություն
Ֆեբրուարի 2024

Այս

Գնաձեռք

Բաժնեկրթություն

Արժեքի ընդլայնում

Վճարողներին

[illegible][illegible][illegible][illegible]

ԱՐԱՐԱՏԻ ԳԵՆԵՐԱԿԱՆ

[illegible]

- > ለርቢታዊ ልዩነቶች ምሳሌ
- > ለሀገራችን ለሥራ ልዩነቶች
- > ለጥናት ልዩነቶች ምሳሌ
- > ለሥራ ልዩነቶች ምሳሌ
- > ለሥራ ልዩነቶች ምሳሌ
- > ለሥራ ልዩነቶች ምሳሌ
- > ለሥራ ልዩነቶች ምሳሌ

- [illegible]

- 4

ለርኪፕ ስፔሪያል

(ፈጣሪነትና ምርት
ፍጥነት)

ለርቢኛ ስጦታዎች



- ◆ 0 ለርቢኛ ስጦታዎች ለሚሰጡት ስጦታዎች



Λ^aσ^b ⊃ σ^b ΔLL ⊃
Δ▷^c∩Δ^aΓ^aσ^b ⊃
^b▷^cγ^bσ^b

[illegible]

- 8

ለርኪፕ ስፔሪያል

(ለፕሮጀክት ልማት
ፋይናንስ ማግኘት)

ለፍቅር ድጋፍ



- ◆ 1 ለፍቅር ድጋፍ ድጋፍ ለሚሰጥበት ሰነድ ለሚያስፈልግበት ሰነድ ለሚያስፈልግበት ሰነድ ለሚያስፈልግበት ሰነድ
- ◆ የፍቅር ድጋፍ ድጋፍ ለሚሰጥበት ሰነድ ለሚያስፈልግበት ሰነድ ለሚያስፈልግበት ሰነድ ለሚያስፈልግበት ሰነድ
 - > የፍቅር ድጋፍ ድጋፍ ለሚሰጥበት ሰነድ ለሚያስፈልግበት ሰነድ ለሚያስፈልግበት ሰነድ ለሚያስፈልግበት ሰነድ
 - > የፍቅር ድጋፍ ድጋፍ ለሚሰጥበት ሰነድ ለሚያስፈልግበት ሰነድ ለሚያስፈልግበት ሰነድ ለሚያስፈልግበት ሰነድ

በጎረቤት አካባቢ
የጥበቃ ማስጠበቅ
የሚደረግ ስራ

[illegible]

- 12

ለርቢኦች ስራ ምክር ቤት

(ከግብርና ጋር የተያያዘ)

- 4



B2GOLD

ጋዕገገግግግግግ ጋዕገገግግግግ

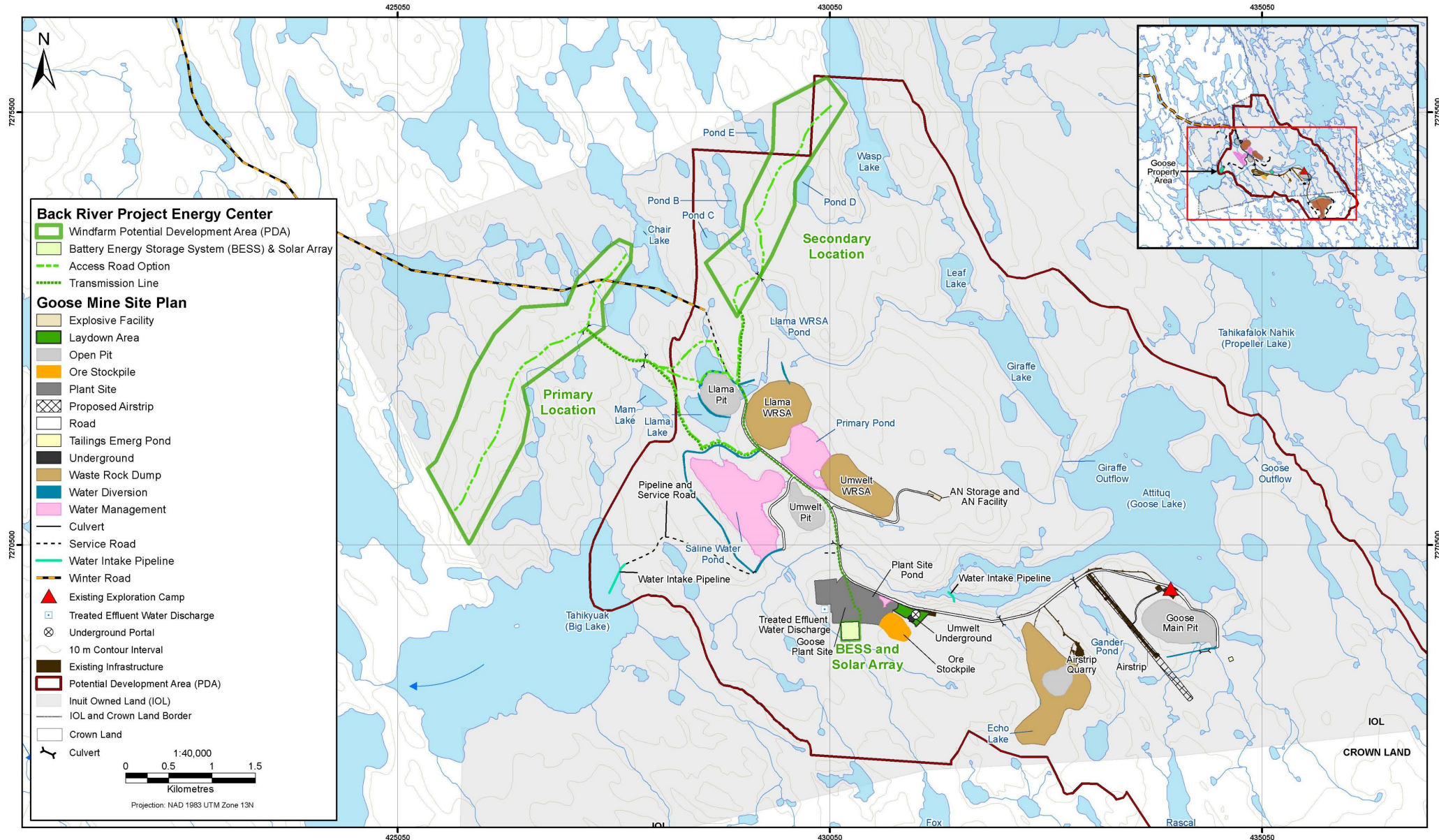
B2Gold ጋዕገገግግግግግ
Suite 3400
666 Burrard Street
Vancouver, BC
Canada, V6C 2X8

ጋዕገገግግግግግግግ: +1 604 681 8371
ጋዕገገግግግግግግግግ: +1 604 681 6209

ጋዕገገግግግግግግግ ጋዕገገግግግግግግ:
investor@b2gold.com
ጋዕገገግግግግግግግግግ: www.b2gold.com

ጋዕገግግግግግግግግግ

Lግግግግግግግግግግ



BACK RIVER ENERGY CENTRE PROJECT

The Back River Project Energy Centre, a wind generation facility, solar panel array and Battery Energy Storage System, capable of supplying clean energy to the Back River Project Mine.

Up to **13** planned
Wind Turbine Generators.

Between
4.0 and 4.5 MW
power capacity per wind turbine giving
the system a generation capacity of
approximately 55 MW of electricity,
which is sufficient to cleanly power
the Back River Project Mine.

Hub Height 111 m

Rotor Length 69 m

Rotor Diameter 138 m

**Solar Array and
Electrical Station**
will be located near the
Diesel Power Plant.

Electrical transmission lines will be laid directly on the tundra and/or laid directly adjacent to the access roads and covered with aggregate.

Solar panels may also be added.

Approximately
500 m
between wind turbines.

Additional electricity generated by the wind turbines and solar array will be stored by the **Battery Energy Storage System**. The Battery Energy Storage System consists of lithium-ion batteries stored in a seacan on an aggregate pad and will be capable of storing energy to be used at times when wind and solar energy is not available.

KEY MITIGATION

- Noise will attenuate to 45 db by 500 m, which will not disturb animals (see Noise to right).
- The wind towers will be shut down when groups of caribou approach during sensitive seasons.
- Behavioural and avoidance monitoring will determine if caribou are bothered by the wind tower and allow for adaptive management.
- The wind towers will be shut down during peak bird migration, at night during fog – research worldwide has shown that this combination of conditions can be dangerous for birds around wind towers.
- Monitoring will look for bird mortalities due to the wind towers and allow for adaptive management.

BENEFITS



Reduction of up to
**~700 fuel
truck trips
per year**

Reduction of
**~15% sealifts
per year**

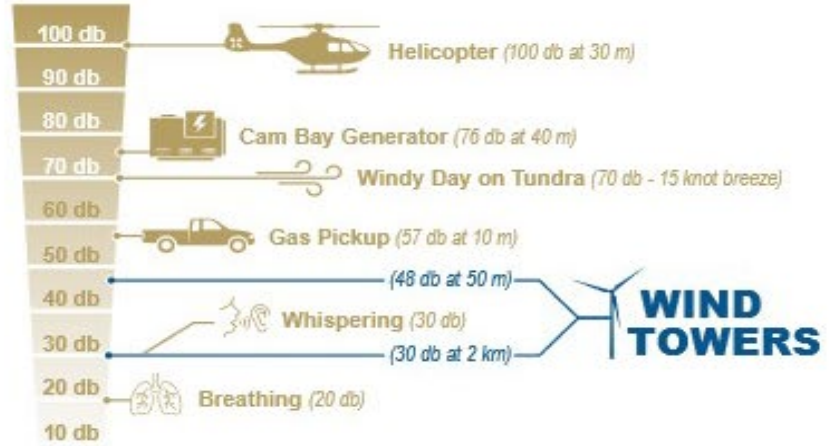


**~50%
less fuel per year**

**~50%
less greenhouse
gas emissions**

NOISE

Sabina conducted noise modeling to determine how loud the wind towers will be at various distances. Noise is measured in decibels (db) which is a logarithmic scale. That means the noise you hear doubles with every 7 db.



At 500 m from the wind towers, the noise will be similar to a person talking quietly and barely above the noise of a typical day on the tundra.

HEIGHT COMPARISON



The taller that wind towers are, the more efficient they can be. Being tall avoids the boundary layer of slow-moving air near the surface and allows for large, slower-moving blades.

Centre Square - Northern Heights
(Tallest building in Yellowknife)
60 m tall