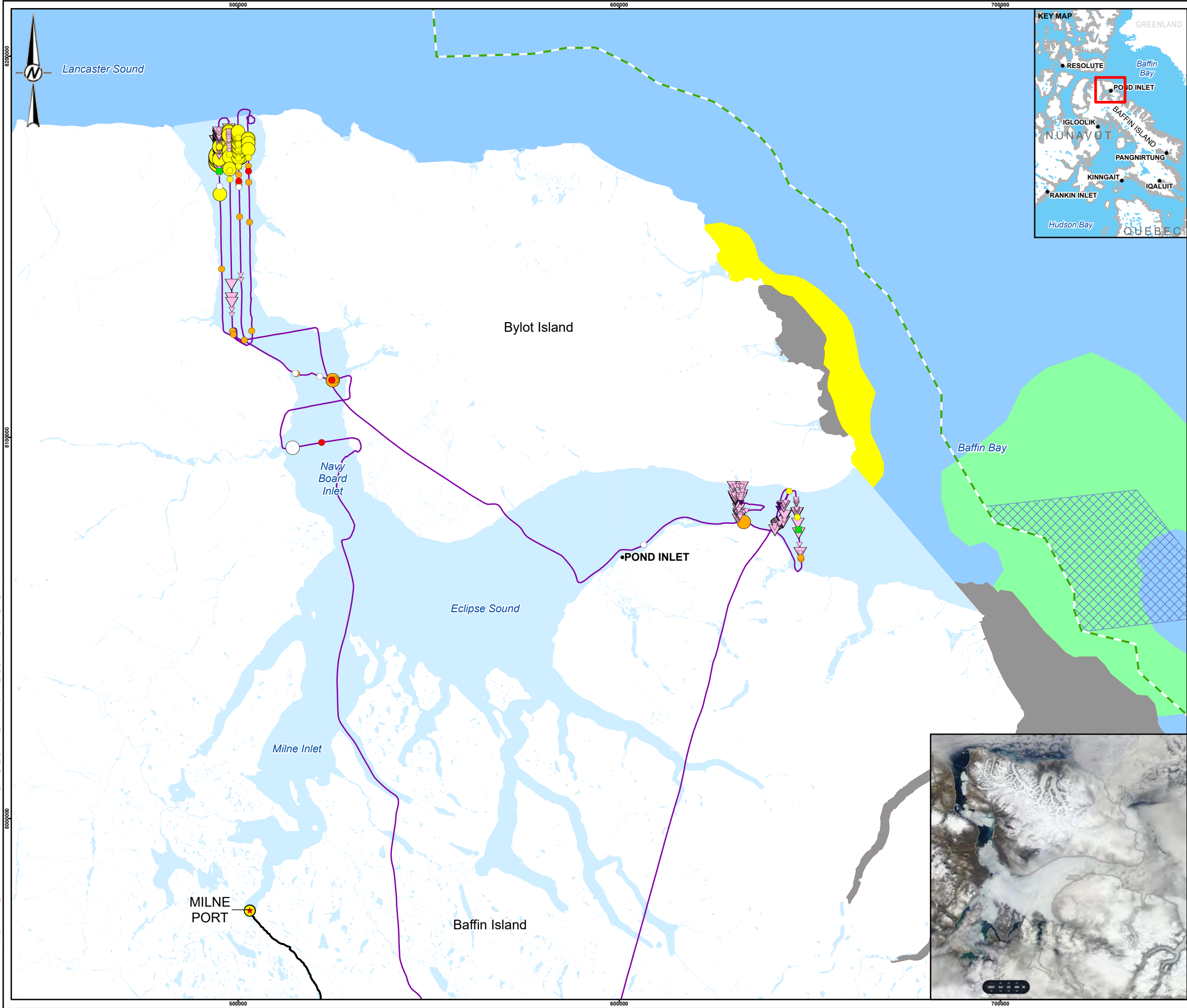


**APPENDIX B**

**Mapbook**



**LEGEND**

• COMMUNITY

★ MILNE PORT

**MARINE MAMMAL SPECIES OBSERVATIONS (GROUP SIZE)**

**BEARDED SEAL**

● 1

**BOWHEAD WHALE**

▼ 1

**HARP SEAL**

● 1

● 2-10

● 10+

**NARWHAL**

▼ 1

▼ 2-10

▼ 10+

**POLAR BEAR**

■ 1

**RINGED SEAL**

● 1

● 2-10

**UNIDENTIFIED SEAL**

○ 1

○ 2-10

— AERIAL SURVEY TRACK

— MILNE INLET TOTE ROAD

⊠ 40 KM BUFFER ZONE

— NUNAVUT SETTLEMENT AREA BOUNDARY

■ WATERBODY (NO ICE DATA)

**ICE CONCENTRATION**

■ < 1/10

■ 1-3/10

■ 4-6/10

■ 7-8/10

■ 9-10/10

■ LANDFAST ICE

**REFERENCE(S)**

MILNE PORT INFRASTRUCTURE DATA BY HATCH, JANUARY 25, 2017, RETRIEVED FROM KNIGHT PIESOLD LTD. FULCRUM DATA MANAGEMENT SITE MAY 19, 2017. ICE CONCENTRATION OBTAINED FROM CANADIAN ICE SERVICE, GOVERNMENT OF CANADA. DAILY ICE CHARTS – BAFFIN BAY AND APPROACHES TO RESOLUTE BAY. ACCESSED OCTOBER 25, 2023. HYDROGRAPHY, POPULATED PLACE, AND PROVINCIAL BOUNDARY DATA OBTAINED FROM GEOGRATIS, © DEPARTMENT OF NATURAL RESOURCES CANADA. ALL RIGHTS RESERVED. PROJECTION: UTM ZONE 17 DATUM: NAD 83

**CLIENT**

BAFFINLAND IRON MINES CORPORATION

**PROJECT**

MARY RIVER PROJECT  
2023 MARINE MAMMAL AERIAL SURVEYS

**TITLE**

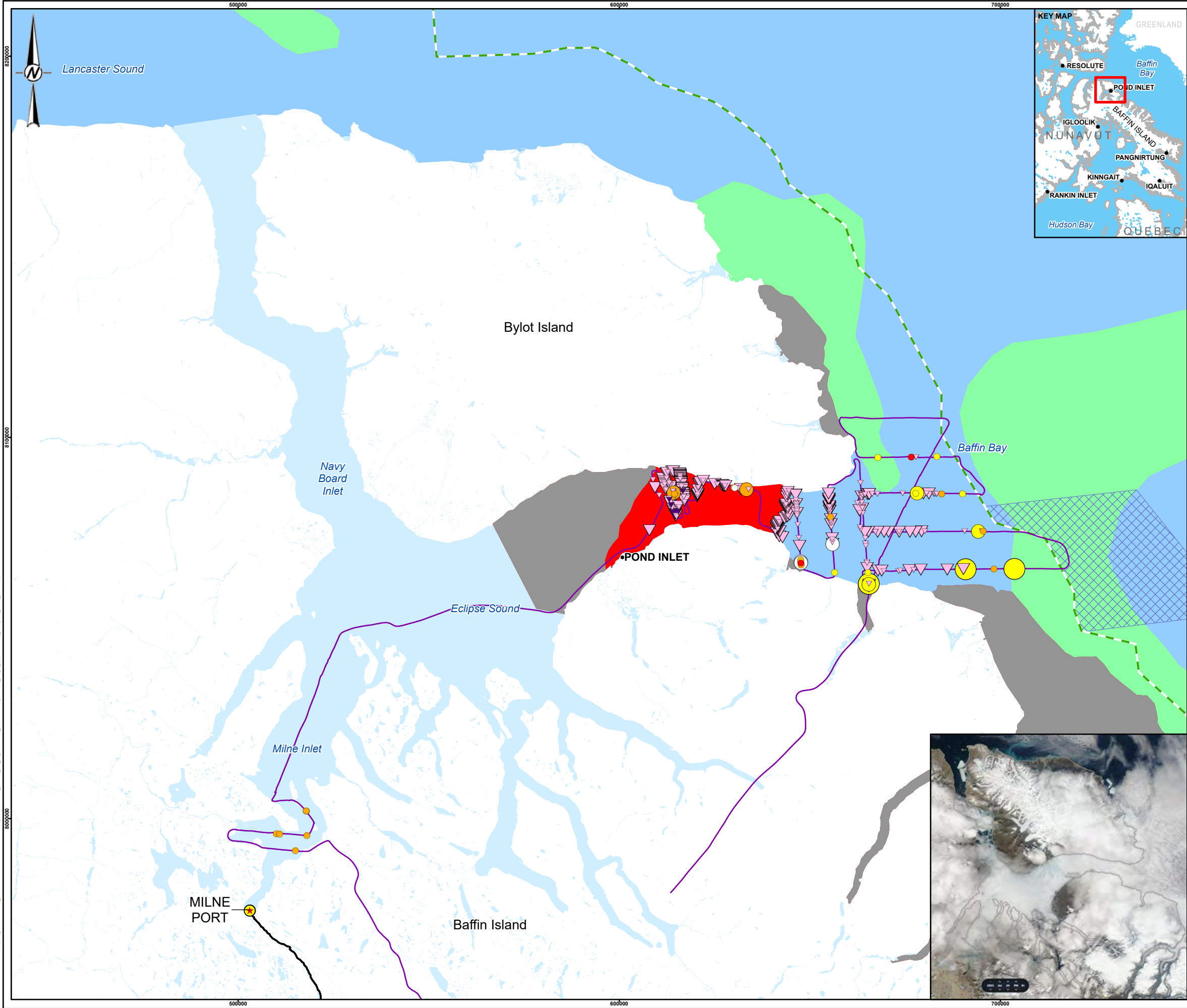
ECLIPSE SOUND LEG 1 SURVEY 1 – JULY 23, 2023

CONSULTANT	YYYY-MM-DD	2024-03-13
	DESIGNED	TT
	PREPARED	AA
	REVIEWED	TT
	APPROVED	PR

PROJECT NO.	CONTROL	REV.	FIGURE
166372402	78000-06	0	B-1

PATH: I:\30151\663724\Map\img\KNO\78000\_2023MarineMammalAerialSurvey\66372402\_78000\_06\_FigB-01.mxd, AerialSurveyTracks\_Leg1\_SpeciesObs\_DDP\_Rev0.aprx, PRINTED ON: AT: 11:34:57 AM

IF THIS MEASUREMENT DOES NOT MATCH WHAT IS SHOWN, THE SHEET SIZE HAS BEEN MODIFIED FROM: ANSI B



**LEGEND**

• COMMUNITY

★ MILNE PORT

**MARINE MAMMAL SPECIES OBSERVATIONS (GROUP SIZE)**

**BEARDED SEAL**

● 1

**BOWHEAD WHALE**

▼ 1

▼ 2-10

**HARP SEAL**

● 1

● 2-10

● 10+

**NARWHAL**

▼ 1

▼ 2-10

**RINGED SEAL**

● 1

● 2-10

**UNIDENTIFIED SEAL**

○ 1

○ 2-10

— AERIAL SURVEY TRACK

— MILNE INLET TOTE ROAD

⊠ 40 KM BUFFER ZONE

— NUNAVUT SETTLEMENT AREA BOUNDARY

■ WATERBODY (NO ICE DATA)

**ICE CONCENTRATION**

■ < 1/10

■ 1-3/10

■ 7-8/10

■ 9-10/10

■ LANDFAST ICE

**REFERENCE(S)**

MILNE PORT INFRASTRUCTURE DATA BY HATCH, JANUARY 25, 2017, RETRIEVED FROM KNIGHT PIESOLD LTD. FULCRUM DATA MANAGEMENT SITE MAY 19, 2017. ICE CONCENTRATION OBTAINED FROM CANADIAN ICE SERVICE, GOVERNMENT OF CANADA. DAILY ICE CHARTS – BAFFIN BAY AND APPROACHES TO RESOLUTE BAY. ACCESSED OCTOBER 25, 2023. HYDROGRAPHY, POPULATED PLACE, AND PROVINCIAL BOUNDARY DATA OBTAINED FROM GEOGRATIS, © DEPARTMENT OF NATURAL RESOURCES CANADA. ALL RIGHTS RESERVED. PROJECTION: UTM ZONE 17 DATUM: NAD 83

**CLIENT**

BAFFINLAND IRON MINES CORPORATION

**PROJECT**

MARY RIVER PROJECT  
2023 MARINE MAMMAL AERIAL SURVEYS

**TITLE**

ECLIPSE SOUND LEG 1 SURVEY 2 – JULY 24, 2023

CONSULTANT	YYYY-MM-DD	2024-03-13
DESIGNED	TT	
PREPARED	AA	
REVIEWED	TT	
APPROVED	PR	

PROJECT NO. 166372402

CONTROL 78000-06

REV. 0

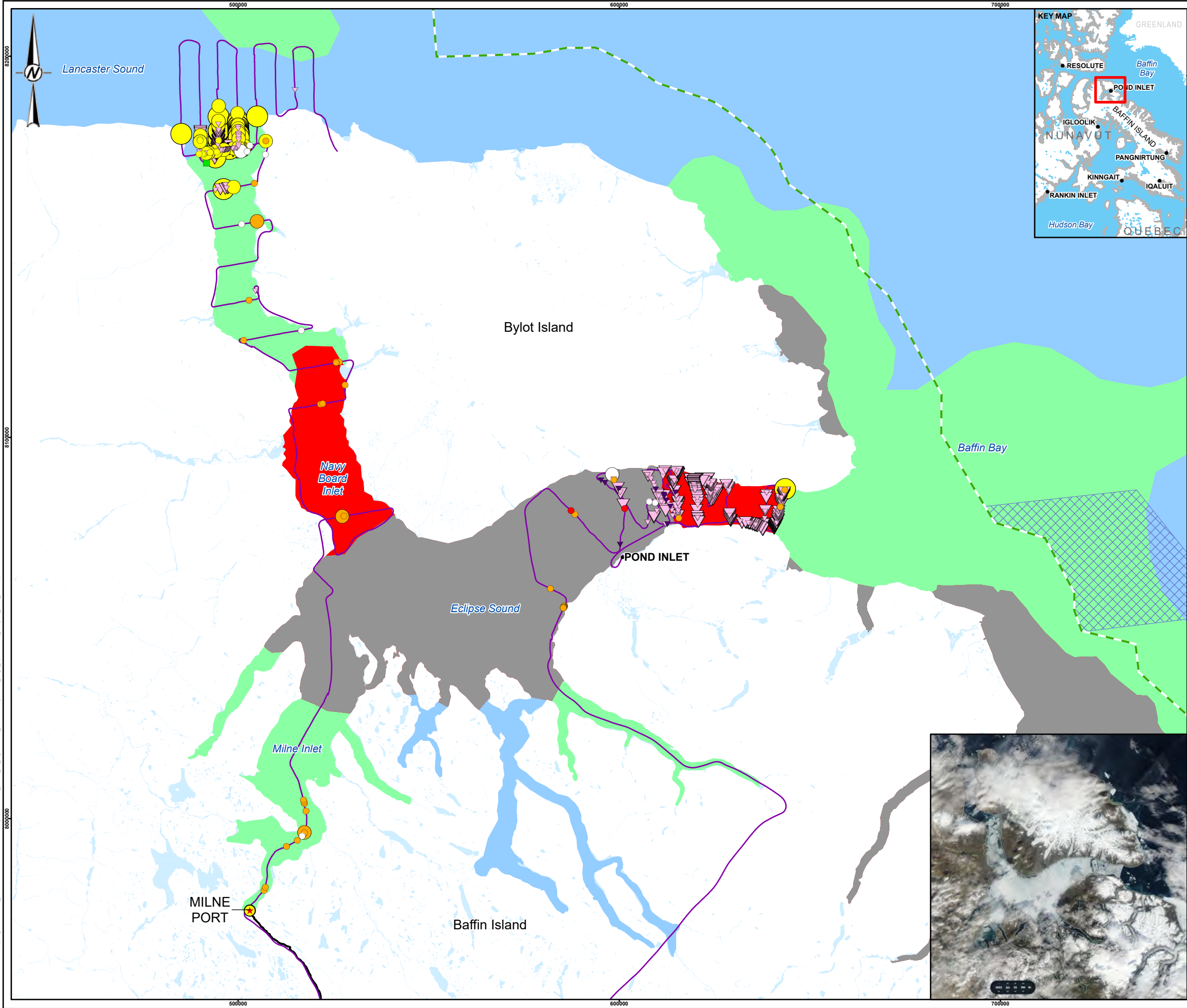
FIGURE B-2

0 25 50

1:1,000,000 KILOMETRES

IF THIS MEASUREMENT DOES NOT MATCH WHAT IS SHOWN, THE SHEET SIZE HAS BEEN MODIFIED FROM: ANSI B 25mm





**LEGEND**

• COMMUNITY

★ MILNE PORT

**MARINE MAMMAL SPECIES OBSERVATIONS (GROUP SIZE)**

**BEARDED SEAL**

● 1

**BOWHEAD WHALE**

▼ 1

**HARP SEAL**

● 1

● 2-10

● 10+

**NARWHAL**

▼ 1

▼ 2-10

▼ 10+

**POLAR BEAR**

■ 1

**RINGED SEAL**

● 1

● 2-10

**UNIDENTIFIED SEAL**

○ 1

○ 2-10

— AERIAL SURVEY TRACK

— MILNE INLET TOTE ROAD

⊠ 40 KM BUFFER ZONE

— NUNAVUT SETTLEMENT AREA BOUNDARY

■ WATERBODY (NO ICE DATA)

**ICE CONCENTRATION**

■ < 1/10

■ 1-3/10

■ 7-8/10

■ 9-10/10

■ LANDFAST ICE

**REFERENCE(S)**

MILNE PORT INFRASTRUCTURE DATA BY HATCH, JANUARY 25, 2017, RETRIEVED FROM KNIGHT PIESOLD LTD. FULCRUM DATA MANAGEMENT SITE MAY 19, 2017. ICE CONCENTRATION OBTAINED FROM CANADIAN ICE SERVICE, GOVERNMENT OF CANADA. DAILY ICE CHARTS – BAFFIN BAY AND APPROACHES TO RESOLUTE BAY. ACCESSED OCTOBER 25, 2023. HYDROGRAPHY, POPULATED PLACE, AND PROVINCIAL BOUNDARY DATA OBTAINED FROM GEOGRATIS, © DEPARTMENT OF NATURAL RESOURCES CANADA. ALL RIGHTS RESERVED. PROJECTION: UTM ZONE 17 DATUM: NAD 83

**CLIENT**

BAFFINLAND IRON MINES CORPORATION

**PROJECT**

MARY RIVER PROJECT

2023 MARINE MAMMAL AERIAL SURVEYS

**TITLE**

ECLIPSE SOUND LEG 1 SURVEY 3 – JULY 25, 2023

CONSULTANT	YYYY-MM-DD	2024-03-13
DESIGNED	TT	
PREPARED	AA	
REVIEWED	TT	
APPROVED	PR	

PROJECT NO. 166372402

CONTROL 78000-06

REV. 0

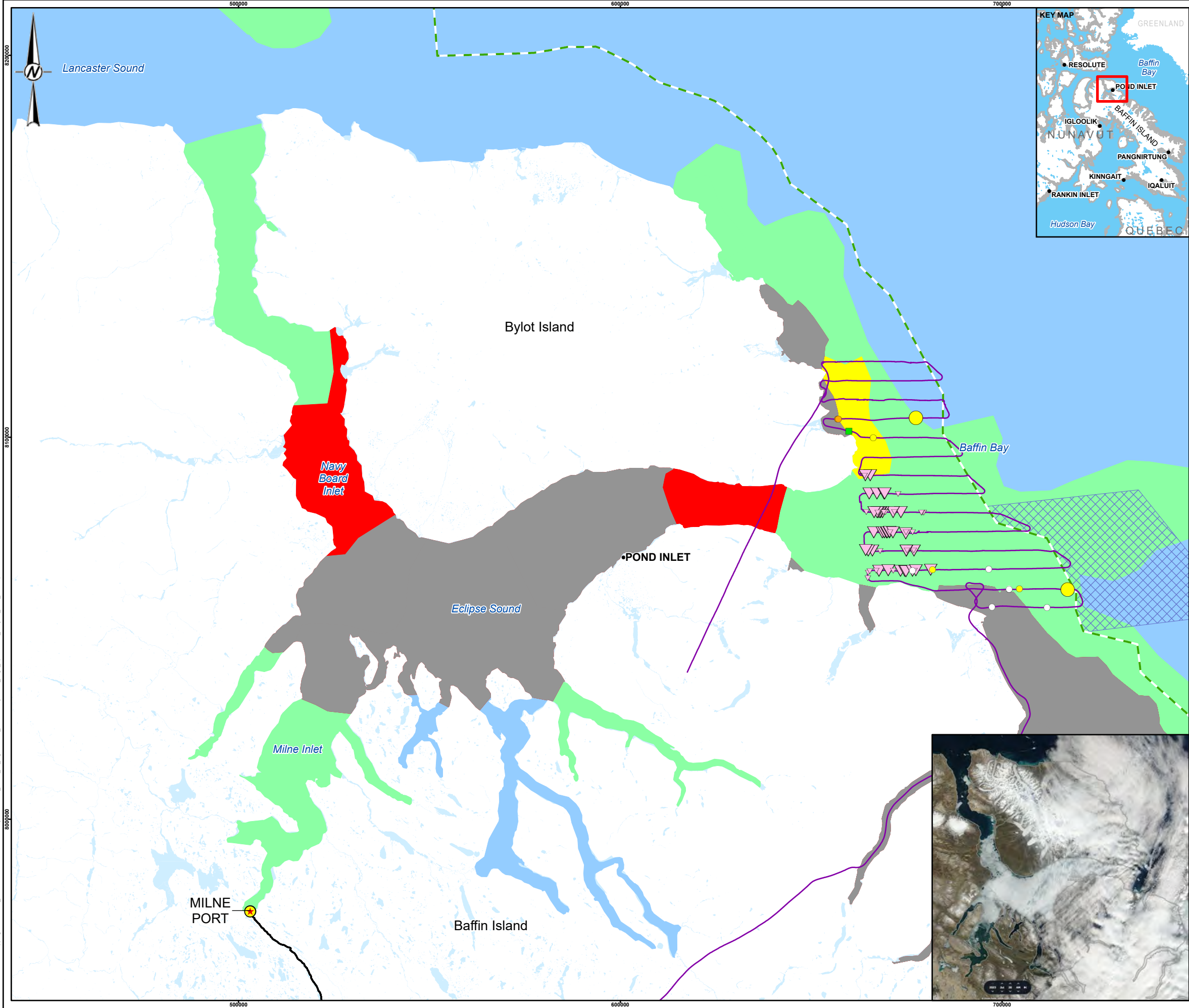
FIGURE B-3

0 25 50

1:1,000,000 KILOMETRES

IF THIS MEASUREMENT DOES NOT MATCH WHAT IS SHOWN, THE SHEET SIZE HAS BEEN MODIFIED FROM: ANSI B





**LEGEND**

● COMMUNITY

★ MILNE PORT

**MARINE MAMMAL SPECIES OBSERVATIONS (GROUP SIZE)**

**HARP SEAL**

● 1

● 2-10

**NARWHAL**

▽ 1

▽ 2-10

**POLAR BEAR**

■ 1

**RINGED SEAL**

● 1

**UNIDENTIFIED SEAL**

○ 1

— AERIAL SURVEY TRACK

— MILNE INLET TOTE ROAD

⊠ 40 KM BUFFER ZONE

— NUNAVUT SETTLEMENT AREA BOUNDARY

■ WATERBODY (NO ICE DATA)

**ICE CONCENTRATION**

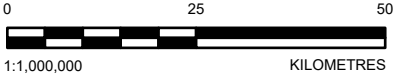
■ < 1/10

■ 1-3/10

■ 4-6/10

■ 9-10/10

■ LANDFAST ICE



**REFERENCE(S)**  
MILNE PORT INFRASTRUCTURE DATA BY HATCH, JANUARY 25, 2017, RETRIEVED FROM KNIGHT PIESOLD LTD. FULCRUM DATA MANAGEMENT SITE MAY 19, 2017. ICE CONCENTRATION OBTAINED FROM CANADIAN ICE SERVICE, GOVERNMENT OF CANADA. DAILY ICE CHARTS – BAFFIN BAY AND APPROACHES TO RESOLUTE BAY. ACCESSED OCTOBER 25, 2023. HYDROGRAPHY, POPULATED PLACE, AND PROVINCIAL BOUNDARY DATA OBTAINED FROM GEOGRATIS, © DEPARTMENT OF NATURAL RESOURCES CANADA. ALL RIGHTS RESERVED. PROJECTION: UTM ZONE 17 DATUM: NAD 83

CLIENT  
BAFFINLAND IRON MINES CORPORATION

PROJECT  
MARY RIVER PROJECT  
2023 MARINE MAMMAL AERIAL SURVEYS

TITLE  
ECLIPSE SOUND LEG 1 SURVEY 4 – JULY 26, 2023

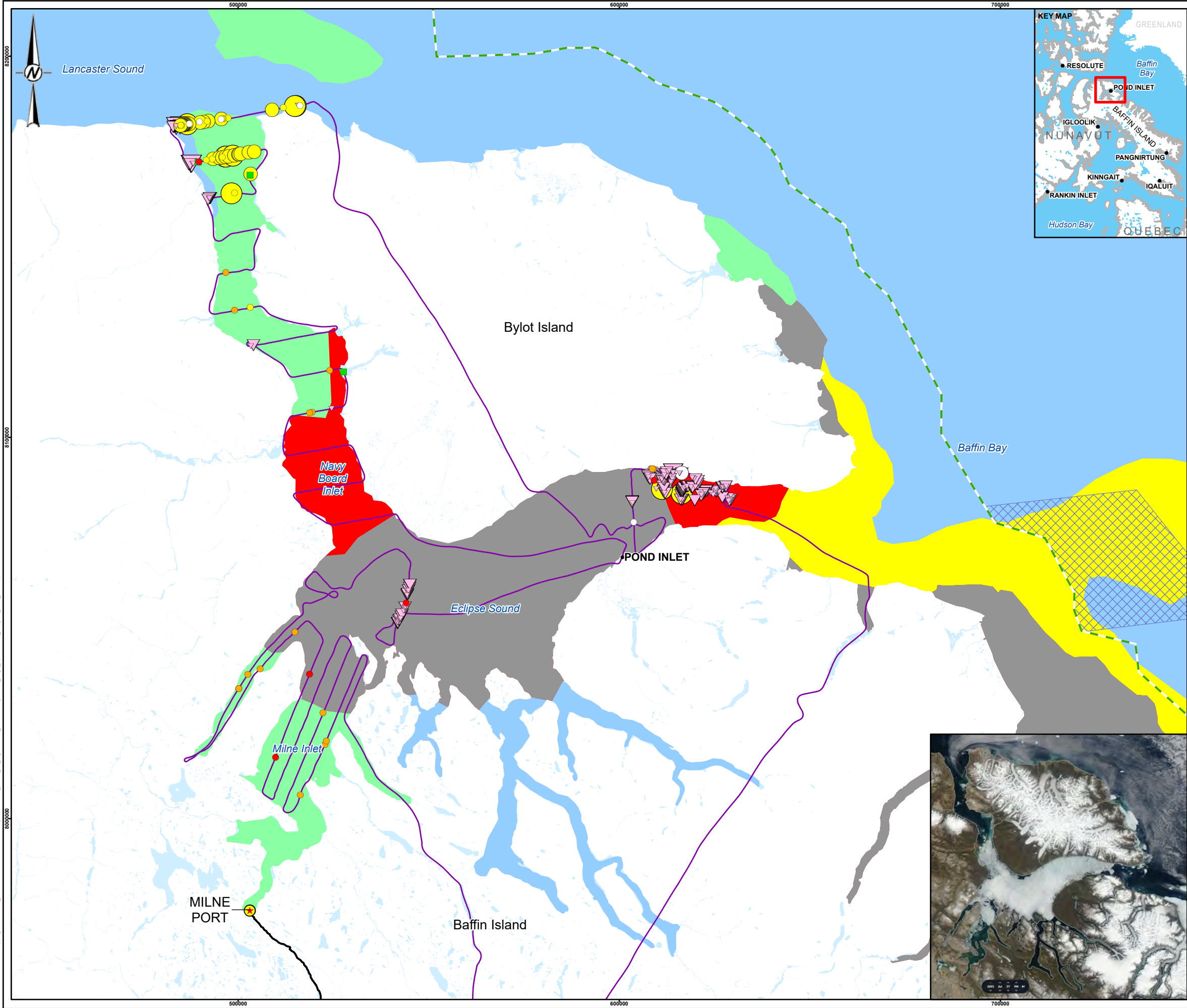
CONSULTANT	YYYY-MM-DD	2024-03-13
	DESIGNED	TT
	PREPARED	AA
	REVIEWED	TT
	APPROVED	PR

PROJECT NO.	CONTROL	REV.	FIGURE
166372402	78000-06	0	B-4



PATH: I:\30151\663724\Map\p1\g1\K0778000\_2023\MarineMammalAerialSurvey\66372402\_78000\_06\_FigB-01a009\_AerialSurveyTracks\_Leg1\_SpeciesObs\_Data\Vis\_DDP\_Rev0.aprx PRINTED ON: AT: 11:35:17 AM

IF THIS MEASUREMENT DOES NOT MATCH WHAT IS SHOWN, THE SHEET SIZE HAS BEEN MODIFIED FROM: ANSI B



**LEGEND**

• COMMUNITY

★ MILNE PORT

**MARINE MAMMAL SPECIES OBSERVATIONS (GROUP SIZE)**

**BEARDED SEAL**

● 1

**HARP SEAL**

● 1

● 2-10

● 10+

**NARWHAL**

▽ 1

▽ 2-10

▽ 10+

**POLAR BEAR**

■ 1

**RINGED SEAL**

● 1

**UNIDENTIFIED SEAL**

○ 1

○ 2-10

— AERIAL SURVEY TRACK

— MILNE INLET TOTE ROAD

▤ 40 KM BUFFER ZONE

▤ NUNAVUT SETTLEMENT AREA BOUNDARY

■ WATERBODY (NO ICE DATA)

**ICE CONCENTRATION**

■ < 1/10

■ 1-3/10

■ 4-6/10

■ 9-10/10

■ LANDFAST ICE

**REFERENCE(S)**

MILNE PORT INFRASTRUCTURE DATA BY HATCH, JANUARY 25, 2017, RETRIEVED FROM KNIGHT PIESOLD LTD. FULCRUM DATA MANAGEMENT SITE MAY 19, 2017. ICE CONCENTRATION OBTAINED FROM CANADIAN ICE SERVICE, GOVERNMENT OF CANADA. DAILY ICE CHARTS – BAFFIN BAY AND APPROACHES TO RESOLUTE BAY. ACCESSED OCTOBER 25, 2023. HYDROGRAPHY, POPULATED PLACE, AND PROVINCIAL BOUNDARY DATA OBTAINED FROM GEOGRATIS, © DEPARTMENT OF NATURAL RESOURCES CANADA. ALL RIGHTS RESERVED. PROJECTION: UTM ZONE 17 DATUM: NAD 83

**CLIENT**

BAFFINLAND IRON MINES CORPORATION

**PROJECT**

MARY RIVER PROJECT

2023 MARINE MAMMAL AERIAL SURVEYS

**TITLE**

ECLIPSE SOUND LEG 1 SURVEY 5 – JULY 27, 2023

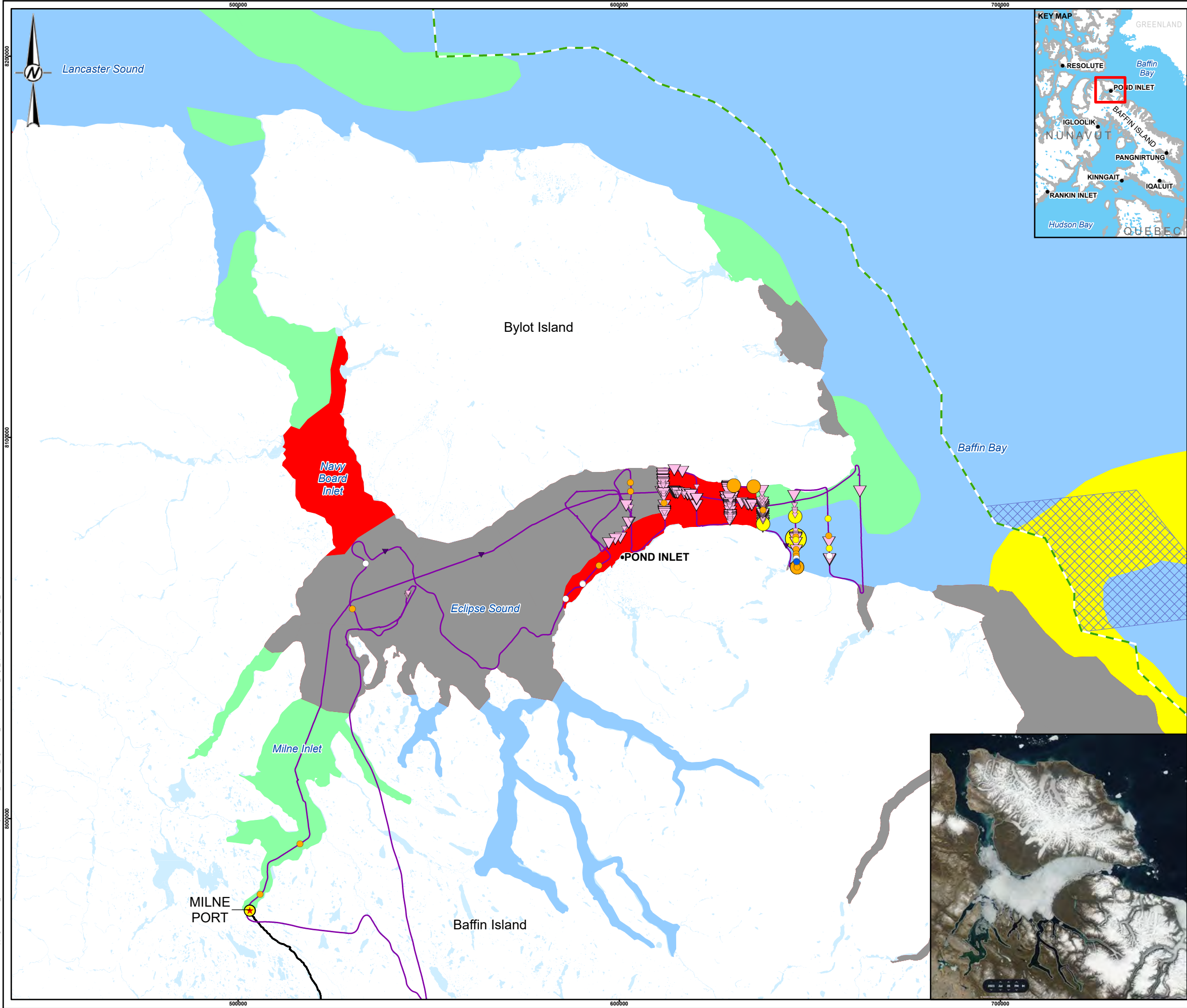
CONSULTANT	YYYY-MM-DD	2024-03-13
	DESIGNED	TT
	PREPARED	AA
	REVIEWED	TT
	APPROVED	PR

PROJECT NO.	CONTROL	REV.	FIGURE
166372402	78000-06	0	B-5

PATH: I:\30151\663724\Map\p1\g1\K2\78000\_2023\MarineMammalAerialSurvey\66372402\_78000\_06\_FigB-01\66372402\_78000\_06\_FigB-01\66372402\_78000\_06\_FigB-01.apr PRINTED ON: AT: 11:52:29 AM

IF THIS MEASUREMENT DOES NOT MATCH WHAT IS SHOWN, THE SHEET SIZE HAS BEEN MODIFIED FROM: ANSI B





**LEGEND**

• COMMUNITY

★ MILNE PORT

**MARINE MAMMAL SPECIES OBSERVATIONS (GROUP SIZE)**

**BOWHEAD WHALE**

▼ 1

**HARP SEAL**

● 1

● 2-10

● 10+

**HOODED SEAL**

● 1

**NARWHAL**

▼ 1

▼ 2-10

▼ 10+

**RINGED SEAL**

● 1

● 2-10

**UNIDENTIFIED SEAL**

○ 1

— AERIAL SURVEY TRACK

— MILNE INLET TOTE ROAD

▤ 40 KM BUFFER ZONE

— NUNAVUT SETTLEMENT AREA BOUNDARY

■ WATERBODY (NO ICE DATA)

**ICE CONCENTRATION**

■ < 1/10

■ 1-3/10

■ 4-6/10

■ 9-10/10

■ LANDFAST ICE

**REFERENCE(S)**

MILNE PORT INFRASTRUCTURE DATA BY HATCH, JANUARY 25, 2017, RETRIEVED FROM KNIGHT PIESOLD LTD. FULCRUM DATA MANAGEMENT SITE MAY 19, 2017. ICE CONCENTRATION OBTAINED FROM CANADIAN ICE SERVICE, GOVERNMENT OF CANADA. DAILY ICE CHARTS – BAFFIN BAY AND APPROACHES TO RESOLUTE BAY. ACCESSED OCTOBER 25, 2023. HYDROGRAPHY, POPULATED PLACE, AND PROVINCIAL BOUNDARY DATA OBTAINED FROM GEOGRATIS, © DEPARTMENT OF NATURAL RESOURCES CANADA. ALL RIGHTS RESERVED. PROJECTION: UTM ZONE 17 DATUM: NAD 83

**CLIENT**

BAFFINLAND IRON MINES CORPORATION

**PROJECT**

MARY RIVER PROJECT

2023 MARINE MAMMAL AERIAL SURVEYS

**TITLE**

ECLIPSE SOUND LEG 1 SURVEY 6 – JULY 28, 2023

CONSULTANT	YYYY-MM-DD	2024-03-13
	DESIGNED	TT
	PREPARED	AA
	REVIEWED	TT
	APPROVED	PR

PROJECT NO.	CONTROL	REV.	FIGURE
166372402	78000-06	0	B-6

PATH: I:\30151\663724\Map\img\KNO\78000\_2023MarineMammalAerialSurvey\66372402\_78000\_06\_FigB-01\66372402\_78000\_06\_AerialSurveyTracks\_Leg1\_SpeciesObs\_DailyIce\_DDP\_Rev0.aprx PRINTED ON: AT: 11:52:29 AM

IF THIS MEASUREMENT DOES NOT MATCH WHAT IS SHOWN, THE SHEET SIZE HAS BEEN MODIFIED FROM: ANSI B 25mm