

# Baffinland Monthly Update

## November 2024

---

### Overview

The freeze-up in the Canadian Arctic was considerably later than average this year. Freeze up was approximately 2-3 weeks later than normal in Pond and Navy Board Inlet.

Air temperatures are mild in Pond Inlet, with cumulative freezing degree days being lower than the average of the last 10 year so far this season (Figure 1).

The ice coverage in the Eastern Canadian Arctic is also significantly less vast than normal (Figure 2 & Figure 3)

Ice is not yet land fast in the RSA. The cover is made up of grey ice (10-15cm) and new ice (<10cm). While ice concentrations are high in Navy Board Inlet and Eclipse Sound, they are still quite low (2/10) in Milne Inlet (Figure 4Figure 2).

Higher than normal air temperatures are expected for the next three months (Figure 5).

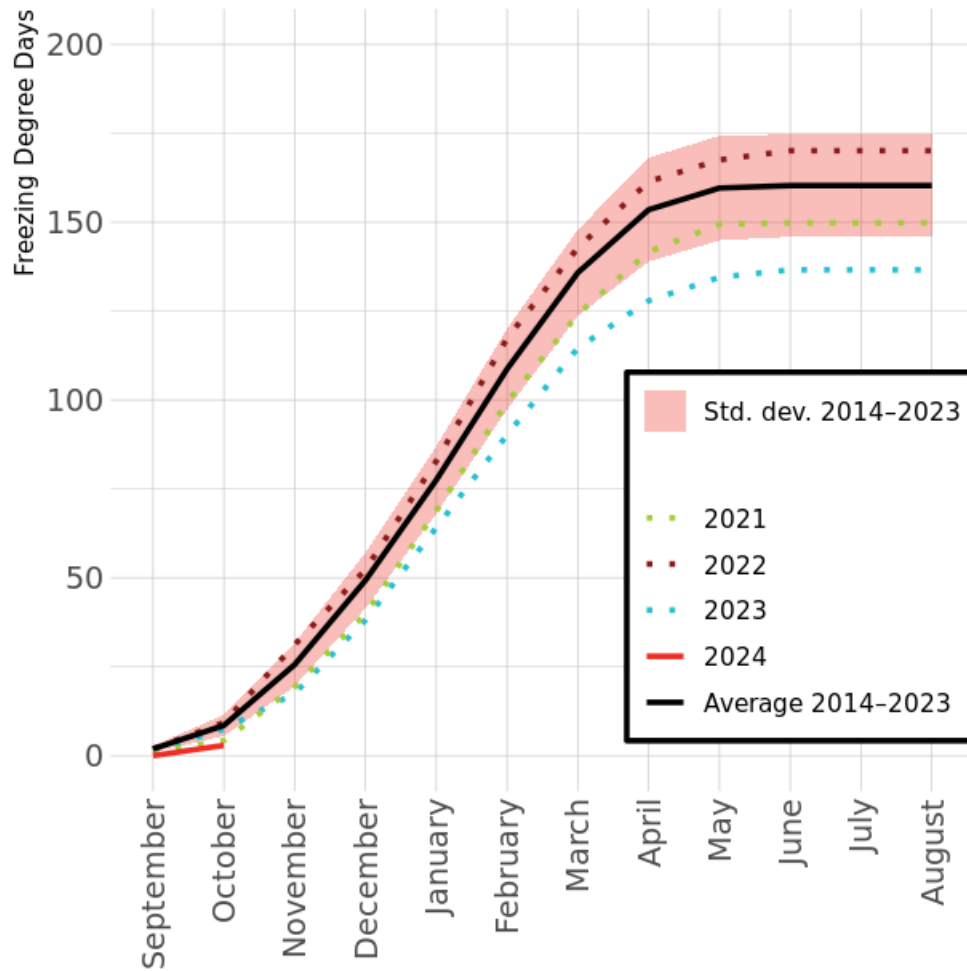


Figure 1 Cumulative freezing degree days in Pond Inlet (ECCC)

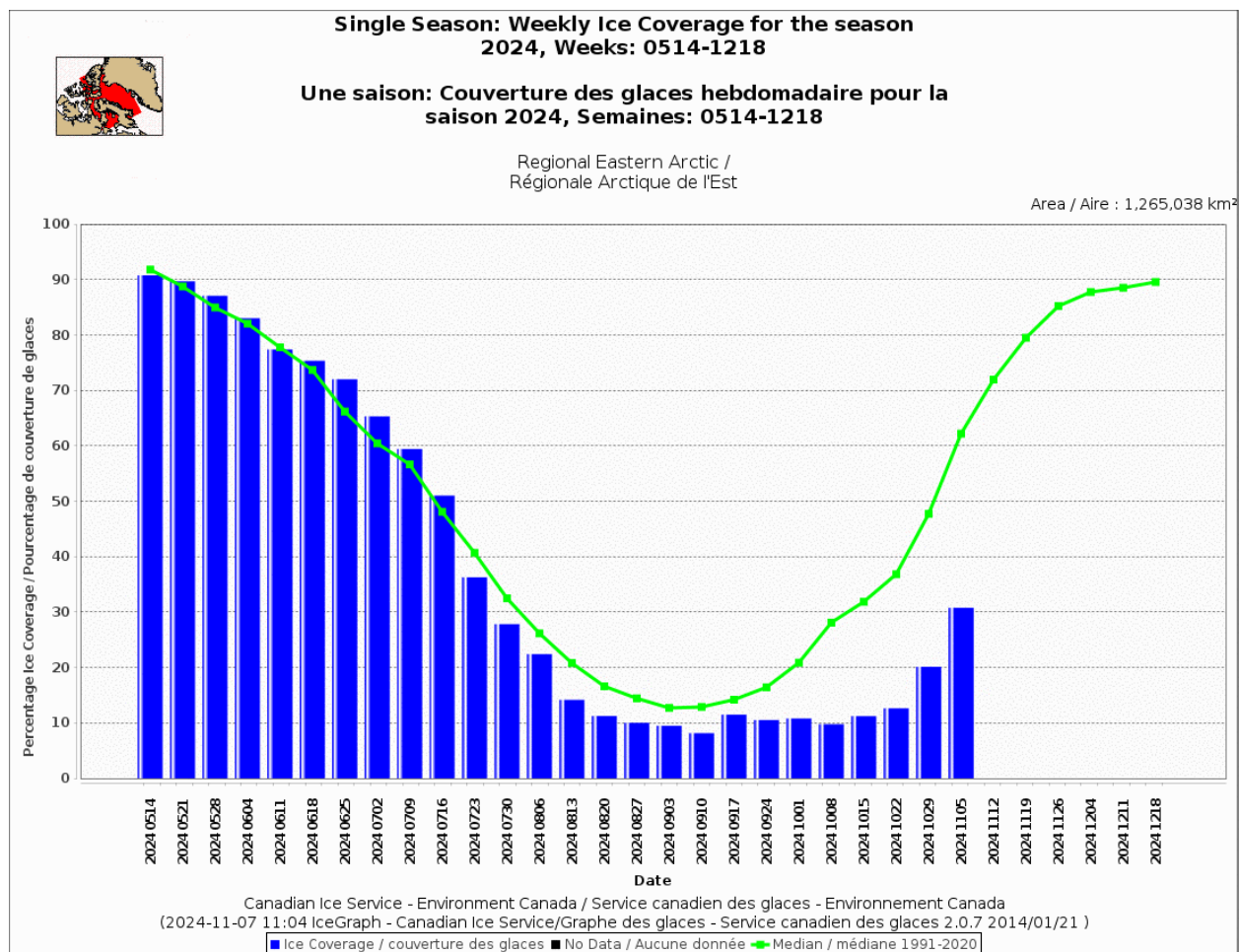
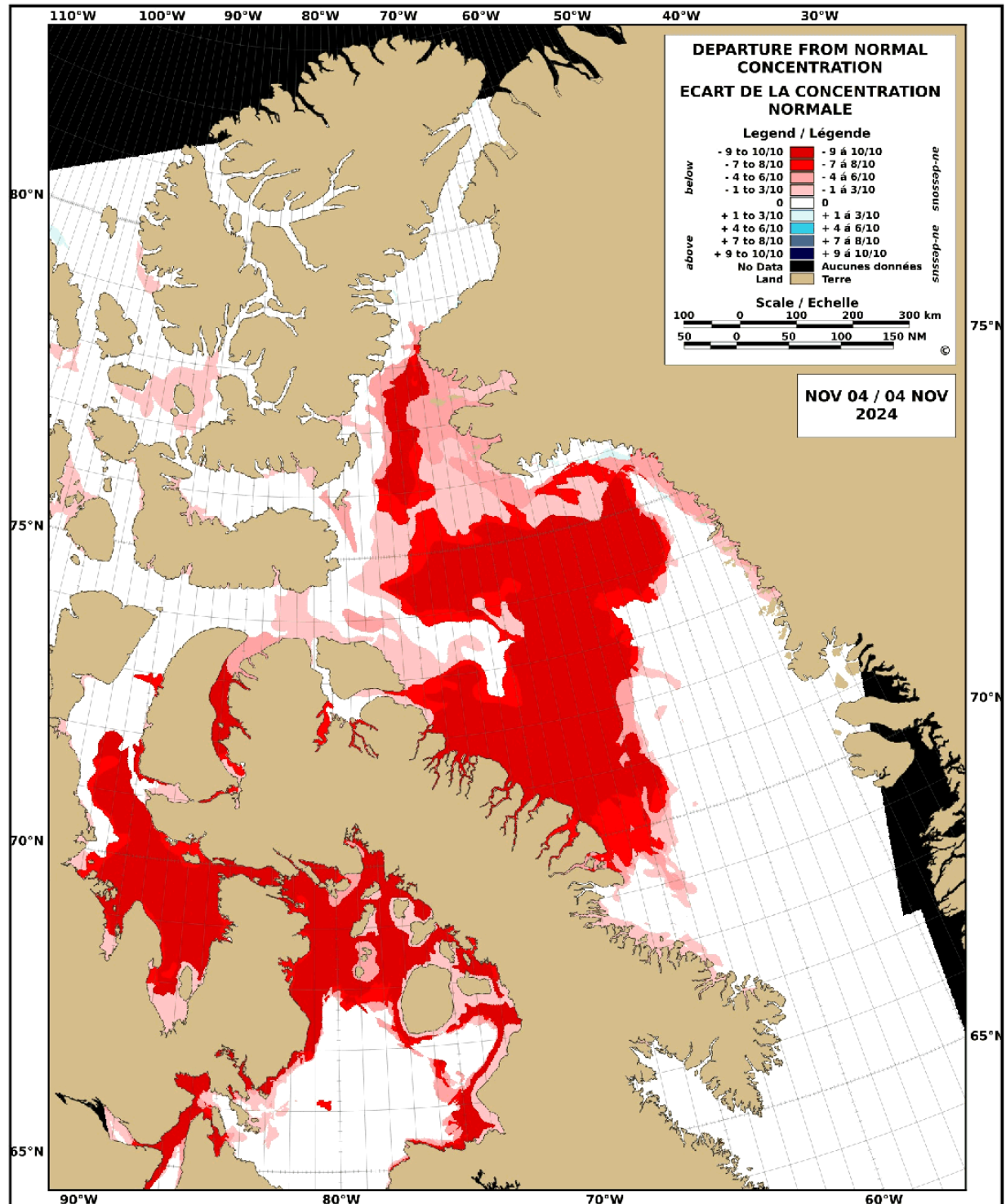


Figure 2 Eastern Canadian Arctic weekly ice coverage (CIS)



STATISTICS BASED UPON 1991-2020  
 LES STATISTIQUES BASÉES SUR 1991-2020

Figure 3 Eastern Canadian Arctic departure from normal ice concentration (CIS)

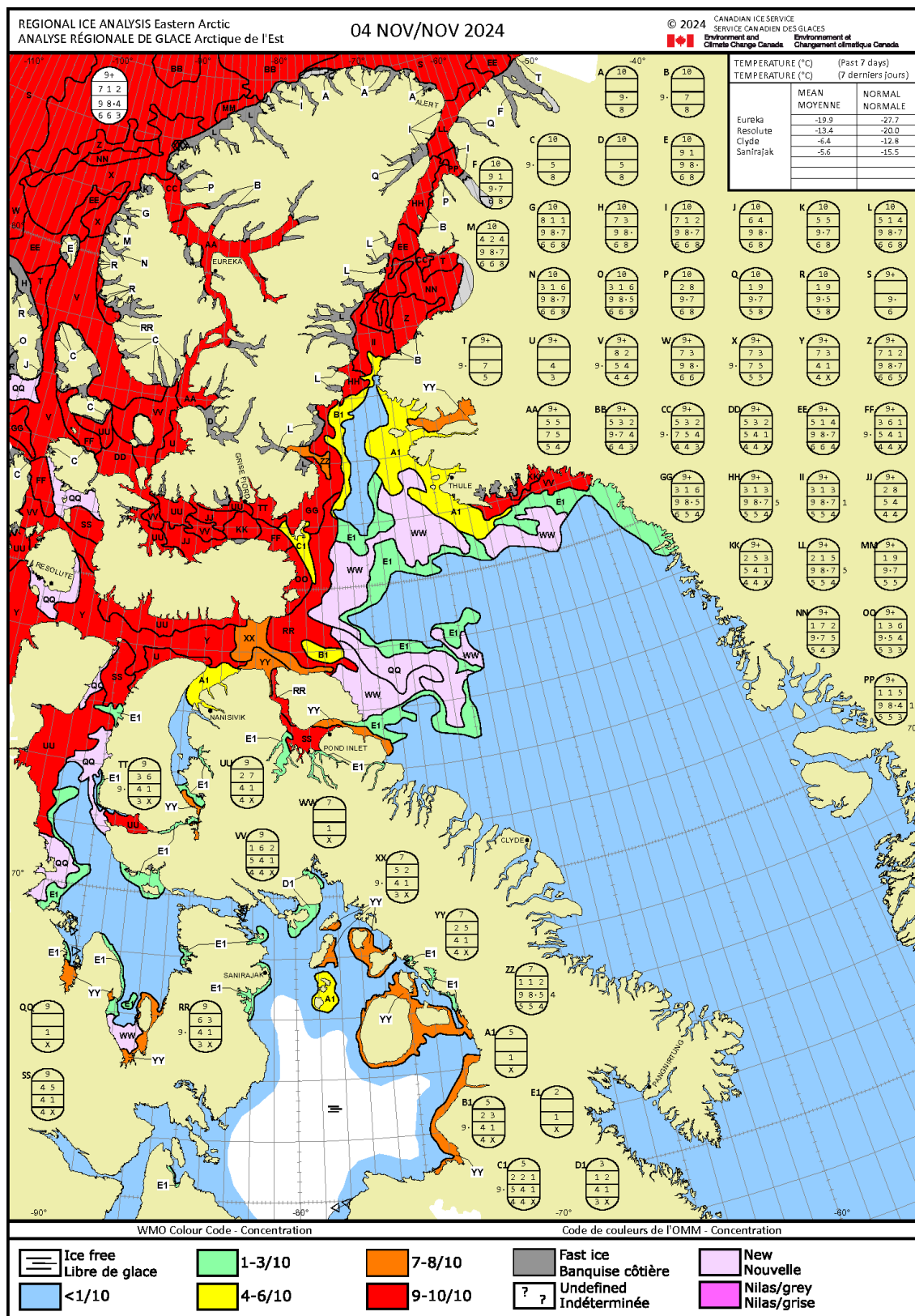


Figure 4 Eastern Canadian Arctic ice concentration (CIS)

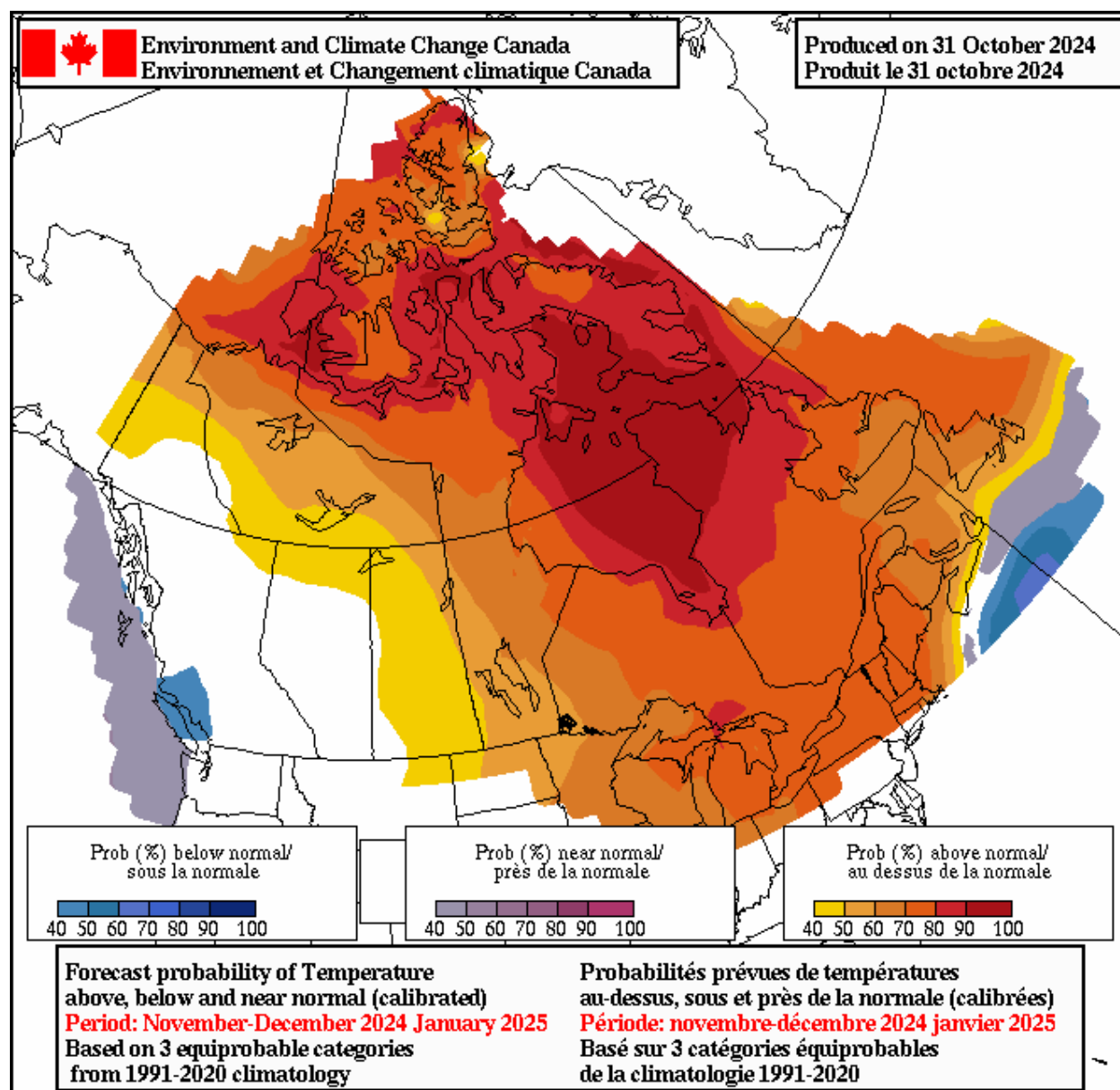


Figure 5 Three month probabilistic air temperature forecast (ECCC)