



#125838

Real Ice - November Field Test with CHARS in Cambridge Bay, Canada

: New

: Scientific Research

: 7/6/2023 7:42:28 AM

Period of operation: from 0001-01-01 to 0001-01-01

: from 0001-01-01 to 0001-01-01

: Cian Sherwin
Real Ice Development Company Limited
M-sparc
Gaerwen Isle of Anglesey LL60 6AG
United Kingdom
: 07719148331, :

alruyaqtuqtumullu imaqmik pakpautimut. Atuqhutik hydrogen-mik, kingighivaalliinnarialik aulapkaiviat imaqmik pakpautainik. Kivitaqtuq pakpautik kivipkaqtitauniaqtuq aglukkut (ikuutaqhimayuq ikuutakkut) talvani taryumi, imaqquqtuyumik pakpakktut imiqtarahuat qaanganut taryum hikua. Una taryum hikua qilamik qiqinniaqtuq hilighilugu hikuuyuq, imaukkautilugu aputik aputiqaqqtat, hangutitaiplugu niklaumayuq anuri taryuplu hikua, taimaa hakugighautauniaqtuq hikumik kinguani. Qauyihaitillugit paqittihimanahuaqtaqqut kititjutiit, taimaalu imaukkarnia, qanurininganianik hakugingnianiklu taryumi hikuliuqhimayuq, taryuplu hikua, aputik hilaplu niklaumania. Atuqtitauyumayugut (anginiqhakkut, ayuqnaitpat) taryum hikuanik aktigiyumik 5 acres-mik. 2.5 acres atuqtauniaqtuq qauyihaivighaq, 2.5 acres-lu atuqtauniaqtuq munaqhiviktut aallatqiingniinik qauyihaivighaat. Ayuqnaitpat munarihimmaarumayaqqut hamna atuqtughanit ukiumi tatqiqhiutinit, mihingnautait havaaqqut takuyumaplugu. Ilittuqhitikaffuktut, imaukkautiplugu 20 cm aputik taryumik imaqmik ukiulihaaqtumi, taimaa naahuriniaqtugut 70 cm-mik hilingnianik hikunnguriamik, aallanngayunik nayugaqnit havakvigihimaitaptingnik.

Personnel

Personnel on site: 5

Days on site: 10

Total Person days: 50

Operations Phase: from 2023-11-14 to 2023-11-24

Real Ice - CHARS Testing Area on Sea Ice (Exact area within polygon TBC by CHARS)	Scientific/International Polar Year Research	Marine	We will be seeking guidance from CHARS to operate at a site that does not present any disruption to residents or wildlife whilst also mitigating any damage to the environment. Guidance from local authorities will be needed to avoid known pathways/trails on the sea ice as well as hunting grounds for local residents.	We will operate in an area that not contain any archaeological/paleontological value.	Real Ice will be conducting research on the sea ice off the coast of Cambridge Bay within 10km of the CHARS facility.

	Robert Cooke & Rachel Mandel	Canadian High Arctic Research Station	2023-03-23

:
Kitikmeot

			/	
Hunters and Trappers Associations/Organizations	Will need authorization and guidance to ensure minimal impacts to local wildlife and environment that could harm food availability for the local community.	Not Yet Applied		
	We have been advised to submit a research proposal with the NRI in order to conduct research in Nunavut.	Not Yet Applied		
	We will need to meaningfully engage with local indigenous populations in Cambridge Bay before, during and after the research has taken place.	Not Yet Applied		

Project transportation types

Transportation Type		Length of Use
Water	Snow-machine rented/used from the CHARS facility to travel on to the sea ice. Required licences & training to be acquired by team member(s) before conducting research.	
Land	Pick-up truck/ATV's. Suitable transport will be needed for 3 people and equipment when travelling on roads/land.	

Project accomodation types

,

'''

		-	
Water Pump	1	10inx19in	Pumping seawater on to the surface of sea ice
Fuel Cell Power Station	1	26inx20inx16in	Power supply for pump

Other	fuel	14	29	406	Liters	Hydrogen gas

0		

Information is not available				

Scale of Test - We designed this test to be on a scale small enough that does not present any impacts across any of the physical, biological and socio-economic elements. Noise Pollution affecting Wildlife - Our prototype is designed to run almost silently with the noise of water flooding the sea ice dominating. Hunting grounds disruption - Having a presence or conducting activities in known hunting grounds could disrupt food availability for the local community. Guidance from the local HTO will aid in the selection of a site with minimal impacts. Sea Ice Trails/Pathways - Blocking routes across the sea ice could disrupt local communities. By including the community and Kitikmeot Inuit Association in this process, we can choose a site that presents no impact on transportation across the sea ice.

Additional Information

SECTION A1: Project Info

SECTION A2: Allweather Road

SECTION A3: Winter Road

SECTION B1: Project Info

SECTION B2: Exploration Activity

SECTION B3: Geosciences

SECTION B4: Drilling

SECTION B5: Stripping

SECTION B6: Underground Activity

SECTION B7: Waste Rock

SECTION B8: Stockpiles

SECTION B9: Mine Development

SECTION B10: Geology

SECTION B11: Mine

SECTION B12: Mill

SECTION C1: Pits

SECTION D1: Facility

SECTION D2: Facility Construction

SECTION D3: Facility Operation

SECTION D4: Vessel Use

SECTION E1: Offshore Survey

SECTION E2: Nearshore Survey

SECTION E3: Vessel Use

SECTION F1: Site Cleanup

SECTION G1: Well Authorization

SECTION G2: Onland Exploration

SECTION G3: Offshore Exploration

SECTION G4: Rig

SECTION H1: Vessel Use

SECTION H2: Disposal At Sea

SECTION I1: Municipal Development

:

We are working with CHARS and the community to identify the site to conduct testing in order to minimise impact with any existing roads/trails, marine routes, etc. that are in existence at present time

:

We are working with CHARS and the community to identify the site to conduct testing in order to minimise impact with any existing wildlife that are in existence at present time

:-

The test area will be within 10km of the CHARS facility and therefore the Cambridge Bay community. No other significant socioeconomic elements will be impacted or within the test site.

Miscellaneous Project Information

Noise Pollution affecting Wildlife - Our prototype is designed to run almost silently with the noise of water flooding the sea ice dominating. Hunting grounds disruption - Having a presence or conducting activities in known hunting grounds could disrupt food availability for the local community. Guidance from the local HTO will aid in the selection of a site with minimal impacts. Sea Ice Trails/Pathways - Blocking routes across the sea ice could disrupt local communities. By including the community and Kitikmeot Inuit Association in this process, we can choose a site that presents no impact on transportation across the sea ice.

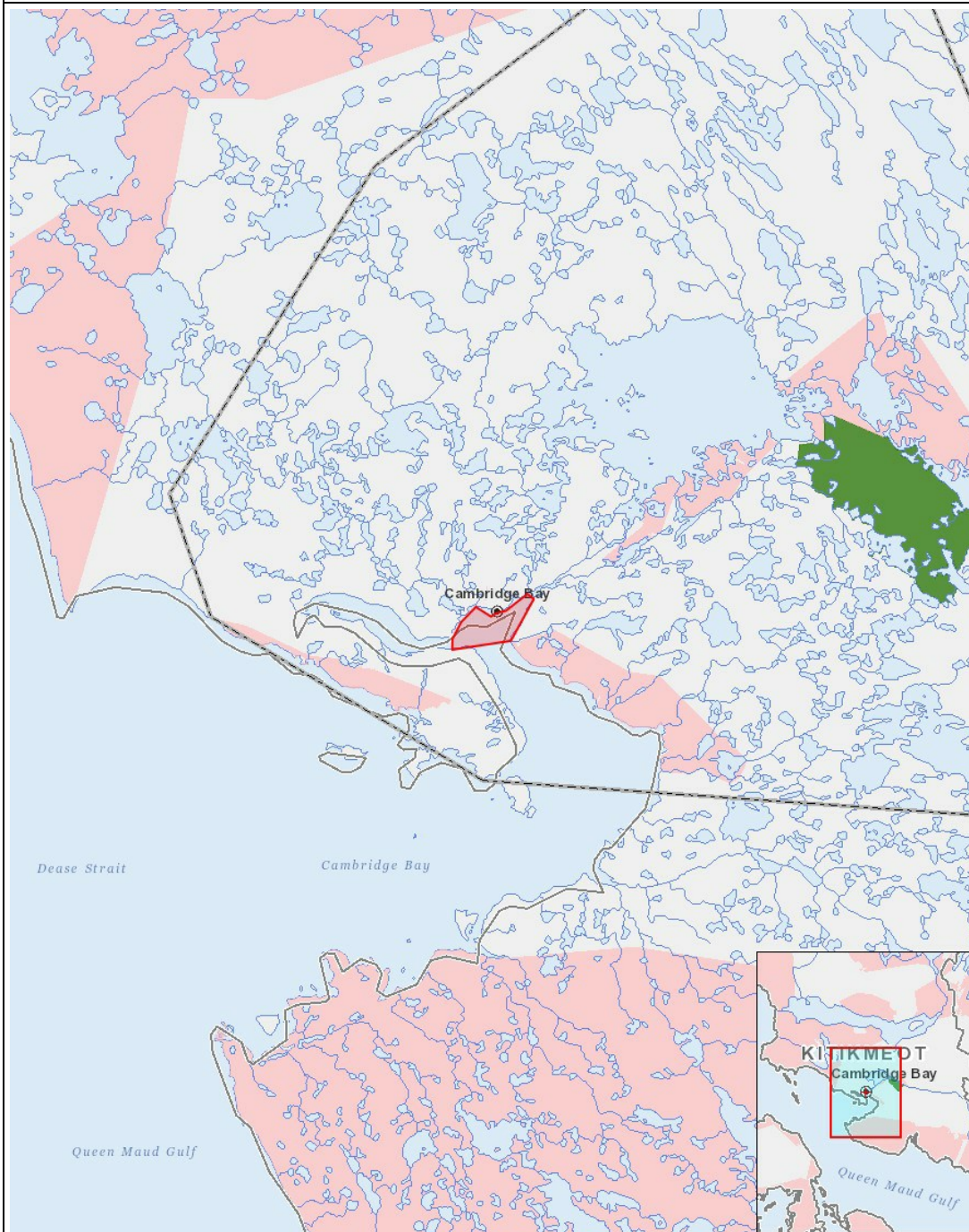
Cumulative Effects

Our activities take place in a localised area to test sea ice thickening using a water pump and therefore would not generate any significant impacts on the environment.

Impacts

[illegible]

(P = , N = , M =
 , U =)



List of Project Geometries

1 polygon Real Ice - CHARS Testing Area on Sea Ice (Exact area within polygon TBC by CHARS)