



NIRB Uuktuutinga Ihivriughikhamut #125847

Access Trail to campsite

Uuktuutinga Qanurittuq: New

Havaap Qanurittunia: Atuinakgiallgit Apkuutit

Uuktuutinga Ublua: 8/10/2023 9:51:31 AM

Period of operation: from 0001-01-01 to 0001-01-01

Piumayaat Angirutinga: from 0001-01-01 to 0001-01-01

Havauhikhaq Ikayuqtinga: Charlotte Zawadski
Pulaarvik Kablu Friendship Centre
PO Box 429
Rankin Inlet Nunavut X0C0G0
canada
Hivayautit Nampanga:: 867-645-2600, Kayumiktukkut Nampanga::

QANURITTUT

Tukihiannaqtunik havaariyaumayumik uqauhiuyun

Qablunaatitut: Access Trail to Pulaarvik Kablu Friendship Centre (PKFC) Campsite. Who: Local contractor What: Staff from PKFC, a local hunter, local contractor and surveyor will be going onsite to stake out an access trail from AEM All-weather Access Road to Addictions treatment program campsite. See map for location. Once a trail is chosen and stakes put in place. Local Contractor will haul gravel to site using dump trucks. The access trail will be wide enough for an emergency vehicle such as an ambulance and/or a pick-up truck. The company is experienced with building access trails surrounding Rankin Inlet for the Municipality of Rankin Inlet. Methods of transportation to site will be by ATV and UTV. Equipment to be used are dump trucks, loader, dozer, grader and compactor. Why: The access trail to the Addictions treatment program campsite is needed for emergency purposes. We will have 10-20 people on site for 3 months of the year. 8 of the individuals will be receiving addictions treatment for drugs, alcohol and gambling. This access trail will allow emergency personals such as an ambulance to drive up to camp to attend to any emergencies. It will allow easier access to the campsite for PKFC staff to attend to any urgent matters after hours. This access trail will also allow for easier access to the campsite from Rankin Inlet. As Camp employees will be driven to the campsite throughout the day. This will prevent further wear and tear to the current ATV trails. There is an area on the trail where after raining it becomes all mud. This area is approximately several meters long. Last year our equipment got stuck there in the mud it took an hour to get the UTV out of the mud. I wouldn't want that to happen again. Over all this access trail will make it easier to PKFC employees, participants and emergency crew to have access to the campsite. Where: Rankin Inlet, Nunavut 'Up the road' off Km 9 on AEM All-Weather Access Road to PKFC Addictions treatment Program campsite that is 2.5 km from the road. This area is not protected. When: To start as soon as we get approval by NIRB. Would like to start early August 2023. It will take 4-6 weeks.

Uiviititut: Access Trail to Pulaarvik Kablu Friendship Centre (PKFC) Campsite. Who: Local contractor What: Staff from PKFC, a local hunter, local contractor and surveyor will be going onsite to stake out an access trail from AEM All-weather Access Road to Addictions treatment program campsite. See map for location. Once a trail is chosen and stakes put in place. Local Contractor will haul gravel to site using dump trucks. The access trail will be wide enough for an emergency vehicle such as an ambulance and/or a pick-up truck. The company is experienced with building access trails surrounding Rankin Inlet for the Municipality of Rankin Inlet. Methods of transportation to site will be by ATV and UTV. Equipment to be used are dump trucks, loader, dozer, grader and compactor. Why: The access trail to the Addictions treatment program campsite is needed for emergency purposes. We will have 10-20 people on site for 3 months of the year. 8 of the individuals will be receiving addictions treatment for drugs, alcohol and gambling. This access trail will allow emergency personals such as an ambulance to drive up to camp to attend to any emergencies. It will allow easier access to the campsite for PKFC staff to attend to any urgent matters after hours. This access trail will also allow for easier access to the campsite from Rankin Inlet. As Camp employees will be driven to the campsite throughout the day. This will prevent further wear and tear to the current ATV trails. There is an area on the trail where after raining it becomes all mud. This area is approximately several meters long. Last year our equipment got stuck there in the mud it took an hour to get the UTV out of the mud. I wouldn't want that to happen again. Over all this access trail will make it easier to PKFC employees, participants and emergency crew to have access to the campsite. Where: Rankin Inlet, Nunavut 'Up the road' off Km 9 on AEM All-Weather Access Road to PKFC Addictions treatment Program campsite that is 2.5 km from the road. This area is not protected. When: To start as soon as we get approval by NIRB. Would like to start early August 2023. It will take 4-6 weeks.

Inuktitut: ???? ???? ?????? ??????????. ???? : ????? ??????????? ???? : ?????? ??????, ????, ??????????? ?? ?????? ?????????????? ?????????? ??????????, ?????? ??????????. ?????? ?????????????? ?? ??????????? ??????????? ?????????? ?????????? ?????????????? ??????????. ?????????? ?????????? ?????????? ?????????? ?????????? ?? ??????, ?????????? ?????? ?????????? ?????????????? ?? ??????. ???? : ??? ???? ?????????? ?????????? ?????????? ?????? ??????????????. ?????????? 10-20 ??? ?????? ?????? ??? ??????. ??? 8-??? ?????????? ??????????, ?????? ?? ??????????????. ?????????? ?????????????? ?????????????? ?????????? ?????????? ?????????? ?????????? ?????????? ?????? ?????? ??????????????. ??? ?? ?????????????? ?????????? ??????????. ?????? ?????????????? ??? ??????, ?????? ?????????????? ??????????????. ??? 7 ?? ??? ?????? ?????????? ?????????? ?????????? ?????? ?? ?????????????.. ?????????? ?????????????? ?????? ?????????? ?????????????? ?????????? ??????????????. ?? : ?????,???? "????? ??? ???? 9 ?????????? ?????? ?????? ?????????? ?????? ?????? 2.5 ??? ??????. ?? ?? ??? ??????????.

Inuinnaqtun: Access Trail to Pulaarvik Kablu Friendship Centre (PKFC) Campsite. Who: Local contractor What: Staff from PKFC, a local hunter, local contractor and surveyor will be going onsite to stake out an access trail from AEM All-weather Access Road to Addictions treatment program campsite. See map for location. Once a trail is chosen and stakes put in place. Local Contractor will haul gravel to site using dump

trucks. The access trail will be wide enough for an emergency vehicle such as an ambulance and/or a pick-up truck. The company is experienced with building access trails surrounding Rankin Inlet for the Municipality of Rankin Inlet. Methods of transportation to site will be by ATV and UTV. Equipment to be used are dump trucks, loader, dozer, grader and compactor. Why: The access trail to the Addictions treatment program campsite is needed for emergency purposes. We will have 10-20 people on site for 3 months of the year. 8 of the individuals will be receiving addictions treatment for drugs, alcohol and gambling. This access trail will allow emergency persons such as an ambulance to drive up to camp to attend to any emergencies. It will allow easier access to the campsite for PKFC staff to attend to any urgent matters after hours. This access trail will also allow for easier access to the campsite from Rankin Inlet. As Camp employees will be driven to the campsite throughout the day. This will prevent further wear and tear to the current ATV trails. There is an area on the trail where after raining it becomes all mud. This area is approximately several meters long. Last year our equipment got stuck there in the mud it took an hour to get the UTV out of the mud. I wouldn't want that to happen again. Over all this access trail will make it easier to PKFC employees, participants and emergency crew to have access to the campsite. Where: Rankin Inlet, Nunavut 'Up the road' off Km 9 on AEM All-Weather Access Road to PKFC Addictions treatment Program campsite that is 2.5 km from the road. This area is not protected. When: To start as soon as we get approval by NIRB. Would like to start early August 2023. It will take 4-6 weeks.

Personnel

Personnel on site: 20

Days on site: 100

Total Person days: 2000

Operations Phase: from 2023-03-10 to 2023-10-30

Hulilukaarutit

| Inigiya | Hulilukaarut Qanurittuq | Nunannga Qanurittaakhaanik | Initurlinga qanuritpa | Initurlinga utuqqarnitat unaluuniit Ingilraaqnitat Uyarannguqtut akhuurninnga | Qanitqiyauyuq qanitqiamut nunallaat kitulluuniit ahiruqtaliyainnit nuna |
|---|-------------------------|----------------------------|-----------------------|---|--|
| From the Meliadine Road. This is not a exact drawing of the access trail. | Access Road | Inuit Owned Surface Lands | I don't know | No archeological sites noted to the area | approximately 13 km access trail or road from Rankin Inlet. Or a 7 km distance by snowmobile |

Nunaliin Ilauyun, Aviktuqhimayuniitunullu Ikayuuhiarunguyun

| Nunauyuq | Atia | Timiuyuq | Upluani Uqaqatigiyaungmata |
|------------------------------|------|----------|----------------------------|
| Information is not available | | | |

Angiuttauvaktunik

Naunaiqlugu nunanga talvani havauhikhaq ittuq:

Kivalliq

Angiuttauvaktunik

| Munariniqmut Ayuittiaqtuq | Angirutinga Qanurittuq | Tadja Qanurittaakhaanik | Ublua Tuniyauyuq/Uuktuqtuq | Umikvikhaa Ublua |
|------------------------------|--|----------------------------|-------------------------------|------------------|
| Kivalliq Inuit Katimayiit | Instructed the process of an access trail approval. Support of an access trail because we are a non-profit Inuit organization provide services to the Kivalliq region. | Active | 2022-09-22 | |

Project transportation types

| Transportation Type | Qanuq Atuqtauniarmangaa | Length of Use |
|------------------------|-------------------------|---------------|
| Land | | |

Project accomodation types

Alaanut,

Ihuaqutivaluin Atuqtauyukhan

Hanalrutit atuqtaunahuat (ukuallu ikuutat, pampiutainnik, tingmitinik, akhaluutinik, hunaluuniit)

| Hanalrutit Qanurittuq | Qaffiuyut | Aktikkulaanga – Qanurittullu | Qanuq Atuqtauniarmangaa |
|-----------------------|-----------|------------------------------|-----------------------------------|
| dump truck | 2 | I don't know | to build an access trail |
| loader | 1 | I don't know | to build access trail to campsite |
| grador | 1 | I don't know | to build access trail to campsite |
| vehicles | 2 | I don't know | drive employees to site |

Qanurittuq Urhuqyuaq unalu Qayangnaqtut Hunavaluit Aturninnga

| Qanurittuq urhuqyuaq hunavaluit aturninnga: | Urhuqyuaq Qanurittuq | Qaffiuyut qattaryut | Qattaryuk Aktikkulaanga | Atauttimut Qaffiuyut | Ilanga | Qanuq Atuqtauniarmangaa |
|---|----------------------|---------------------|-------------------------|----------------------|--------|-------------------------|
| Diesel | fuel | 0 | 0 | 0 | Liters | for machineary |
| No hazardous material or chemicals will be used | hazardous | 0 | 0 | 0 | Kg | Nothing |

Imaqmik Aturninnga

| Ubluq qanuraaluk (m3) | Aturumayain imavaluin utiqtittagaani qanuq | Atulirumayain imavaluin utiqtittagani humi |
|-----------------------|--|--|
| 0 | | |

Iqqakuq

Ikkakunik Munakgiyauyunik

| Havauhikhaq Hulilukaarut | Qanurittuq Iqqakut | Ihumagiyauyuq Qanuraaluktut Atuqtait | Qanuq Iqqakuurniarmangaa | Halummaqtirarnirutikhan piyutin |
|------------------------------|-----------------------|--|-----------------------------|------------------------------------|
| Information is not available | | | | |

Avatiliriniqmut Ayurhautingit:

It is an access trail to a campsite. The trail will be 3 km. This will impact the environment by being an gravel access trail. No land will be dug up, gravel will be brought to site and put onto the tundra to create an access trail. The gravel will only be applied to the trail and to no other location. The access trail will be half a meter depth and 6 meters wide. The trail will not be going over any bodies of water only over the tundra.

Additional Information

SECTION A1: Project Info

SECTION A2: Allweather Road

SECTION A3: Winter Road

SECTION B1: Project Info

SECTION B2: Exploration Activity

SECTION B3: Geosciences

SECTION B4: Drilling

SECTION B5: Stripping

SECTION B6: Underground Activity

SECTION B7: Waste Rock

SECTION B8: Stockpiles

SECTION B9: Mine Development

SECTION B10: Geology

SECTION B11: Mine

SECTION B12: Mill

SECTION C1: Pits

SECTION D1: Facility

SECTION D2: Facility Construction

SECTION D3: Facility Operation

SECTION D4: Vessel Use

SECTION E1: Offshore Survey

SECTION E2: Nearshore Survey

SECTION E3: Vessel Use

SECTION F1: Site Cleanup

SECTION G1: Well Authorization

SECTION G2: Onland Exploration

SECTION G3: Offshore Exploration

SECTION G4: Rig

SECTION H1: Vessel Use

SECTION H2: Disposal At Sea

SECTION I1: Municipal Development

Qanurittuq Ittunik Avatinga: Avatingalluanga

Qanurittuq Ittunik Avatinga: Inuuhimayunut Avatinga

Qanurittuq Ittunik Avatinga: Inungit-maniliurutingit Avatinga

Miscellaneous Project Information

Naunaiyainiq ukuninnga Ayurhautingit unalu Piumayaat Ikikliyuumiutinahuarutit

Tamatkiumayunik Ihuikgutivaktunik

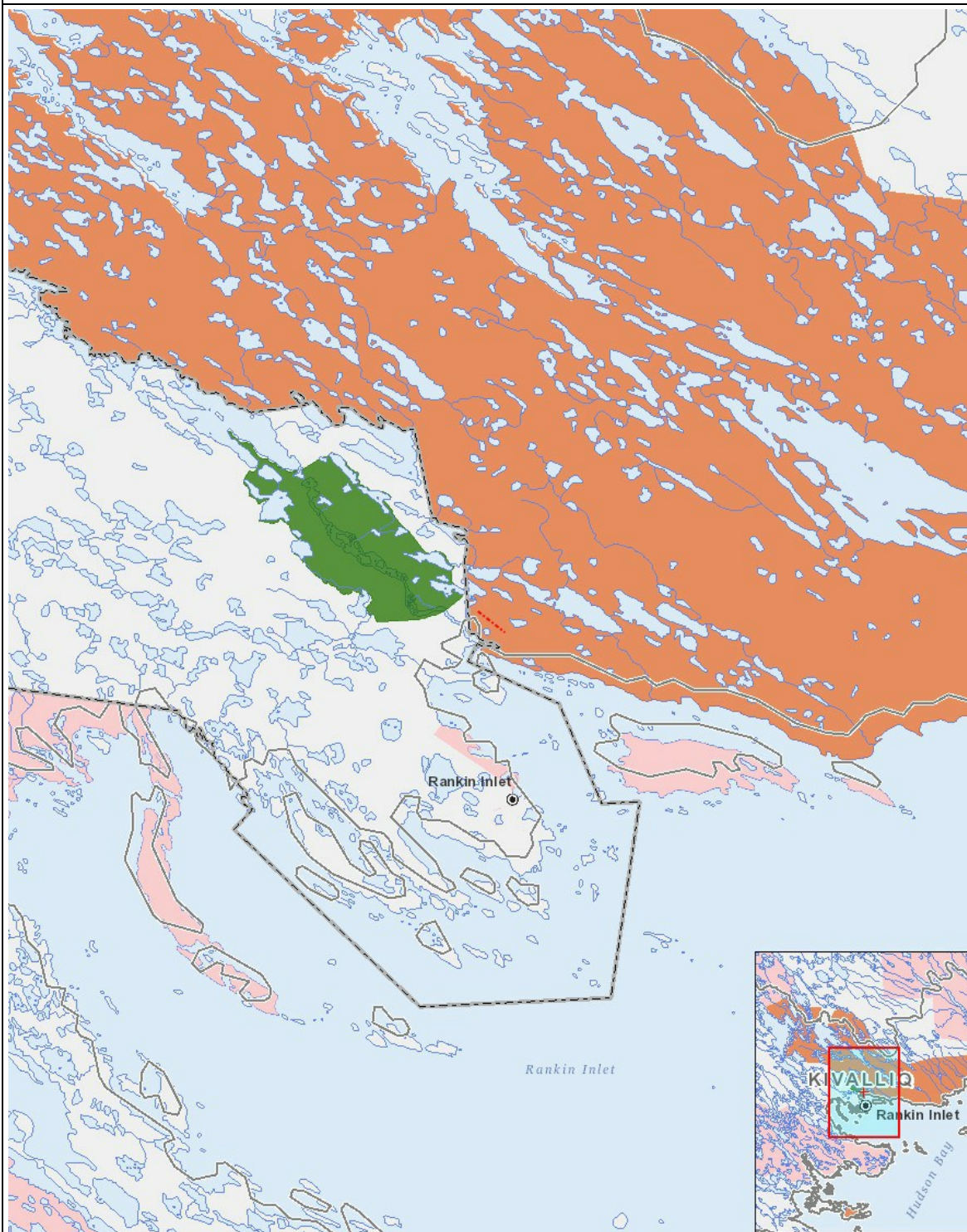
Impacts

Ilitariyauniq Avatiliriniqmut Ayurhautingit

| | | PHYSICAL | Designated environmental areas | Ground stability | Permafrost | Hydrology / Limnology | Water quality | Climate conditions | Eskers and other unique or fragile landscapes | Surface and bedrock geology | Sediment and soil quality | Tidal processes and bathymetry | Air quality | Noise levels | BIOLOGICAL | Vegetation | Wildlife, including habitat and migration patterns | Birds, including habitat and migration patterns | Aquatic species, incl. habitat and migration/spawning | Wildlife protected areas | SOCIO-ECONOMIC | Archaeological and cultural historic sites | Employment | Community wellness | Community infrastructure | Human health |
|----------------|--|----------|--------------------------------|------------------|------------|-----------------------|---------------|--------------------|---|-----------------------------|---------------------------|--------------------------------|-------------|--------------|------------|------------|--|---|---|--------------------------|----------------|--|------------|--------------------|--------------------------|--------------|
| Havakvinga | | | | | | | | | | | | | | | | | | | | | | | | | | |
| - | | - | - | - | - | - | - | - | - | - | - | - | - | - | | - | - | - | - | - | | - | - | - | - | - |
| Aulapkaininnga | | | | | | | | | | | | | | | | | | | | | | | | | | |
| - | | - | - | - | - | - | - | - | - | - | - | - | - | - | | - | - | - | - | - | | - | - | - | - | - |
| Piiqtauniq | | | | | | | | | | | | | | | | | | | | | | | | | | |
| - | | - | - | - | - | - | - | - | - | - | - | - | - | - | | - | - | - | - | - | | - | - | - | - | - |

(P = Nakuuyuq, N = Nakuungittut unalu mikhilimaittuq, M = Nakuungittut unalu mikhittaaqtuq, U = Naluyauyuq)

Havaariyauyukhamut Nayugaa



List of Project Geometries

- 1 polyline From the Meliadine Road. This is not a exact drawing of the access trail.