



NIRB Uuktuutinga Ihivriughikhamut #125847

Access Trail to campsite

Uuktuutinga Qanurittuq: New

Havaap Qanurittunia: Atuinakgiallgit Apkuutit

Uuktuutinga Ublua: 8/10/2023 9:51:31 AM

Period of operation: from 0001-01-01 to 0001-01-01

Piumayaat Angirutinga: from 0001-01-01 to 0001-01-01

Havauhikhaq Ikayuqtinga: Charlotte Zawadski
Pulaarvik Kablu Friendship Centre
PO Box 429
Rankin Inlet Nunavut X0C0G0
canada
Hivayautit Nampanga:: 867-645-2600, Kayumiktukkut Nampanga::

QANURITTUT

Tukihinnaqtunik havaariyaumayumik uqauhiuyun

Qablunaatitut: Access Trail to Pulaarvik Kablu Friendship Centre (PKFC) Campsite. **Who:** Local contractor **What:** Staff from PKFC, a local hunter, local contractor and surveyor will be going onsite to stake out an access trail from AEM All-weather Access Road to Addictions treatment program campsite. See map for location. Once a trail is chosen and stakes put in place. Local Contractor will haul gravel to site using dump trucks. The access trail will be wide enough for an emergency vehicle such as an ambulance and/or a pick-up truck. The company is experienced with building access trails surrounding Rankin Inlet for the Municipality of Rankin Inlet. Methods of transportation to site will be by ATV and UTV. Equipment to be used are dump trucks, loader, dozer, grader and compactor. **Why:** The access trail to the Addictions treatment program campsite is needed for emergency purposes. We will have 10-20 people on site for 3 months of the year. 8 of the individuals will be receiving addictions treatment for drugs, alcohol and gambling. This access trail will allow emergency personals such as an ambulance to drive up to camp to attend to any emergencies. It will allow easier access to the campsite for PKFC staff to attend to any urgent matters after hours. This access trail will also allow for easier access to the campsite from Rankin Inlet. As Camp employees will be driven to the campsite throughout the day. This will prevent further wear and tear to the current ATV trails. There is an area on the trail where after raining it becomes all mud. This area is approximately several meters long. Last year our equipment got stuck there in the mud it took an hour to get the UTV out of the mud. I wouldn't want that to happen again. Over all this access trail will make it easier to PKFC employees, participants and emergency crew to have access to the campsite. **Where:** Rankin Inlet, Nunavut 'Up the road' off Km 9 on AEM All-Weather Access Road to PKFC Addictions treatment Program campsite that is 2.5 km from the road. This area is not protected. **When:** To start as soon as we get approval by NIRB. Would like to start early August 2023. It will take 4-6 weeks.

Uiviititut: N/A

Inuktitut: . : :
 , ,
 , .
 .
 . ,
 . :
 . 10-20
 . 8- ,
 .
 .
 .
 , . 7
 ..
 . : , " 9
 .
 2.5 . . :
 . 2023
 . 4-6 .

Inuinnaqtun: N/A

Personnel

Personnel on site: 20

Days on site: 100

Total Person days: 2000

Operations Phase: from 2023-03-10 to 2023-10-30

Hulilukaarutit

Inigiya	Hulilukaarut Qanurittuq	Nunannga Qanurittaakhaanik	Initurlinga qanuritpa	Initurlinga utuqqarnitat unaluuniit Ingilraaqnitat Uyarannguqtut akhuurninnga	Qanitqiyauyuq qanitqiamut nunallaat kitulluuniit ahiruqtaliyainnit nuna
From the Meliadine Road. This is not a exact drawing of the access trail.	Access Road	Inuit Owned Surface Lands	I don't know	No archeological sites noted to the area	approximately 13 km access trail or road from Rankin Inlet. Or a 7 km distance by snowmobile

Nunaliin Ilauyun, Aviktuqhimayuniitunullu Ikayuuhiarunguyun

Nunauyuq	Atia	Timiuyuq	Upluani Uqaqatigiyaungmata
Information is not available			

Angiuttauvaktunik

Naunaiqlugu nunanga talvani havauhikhaq ittuq:

Kivalliq

Angiuttauvaktunik

Munariniqmut Ayuittiaqtuq	Angirutinga Qanurittuq	Tadja Qanurittaakhaanik	Ublua Tuniyauyuq/Uuktuqtuq	Umikvikhaa Ublua
Kivalliq Inuit Katimayiit	Instructed the process of an access trail approval. Support of an access trail because we are a non-profit Inuit organization provide services to the Kivalliq region.	Active	2022-09-22	

Project transportation types

Transportation Type	Qanuq Atuqtauniarmangaa	Length of Use
Land		

Project accomodation types

Alaanut,

Ihuaqutivaluin Atuqtauyukhan

Hanalrutit atuqtaunahuat (ukuallu ikuutat, pampiutainnik, tingmitinik, akhaluutinik, hunaluuniit)

Hanalrutit Qanurittuq	Qaffiuyut	Aktikkulaanga – Qanurittullu	Qanuq Atuqtauniarmangaa
dump truck	2	I don't know	to build an access trail
loader	1	I don't know	to build access trail to campsite
grador	1	I don't know	to build access trail to campsite
vehicles	2	I don't know	drive employees to site

Qanurittuq Urhuqyuaq unalu Qayangnaqtut Hunavaluit Aturninnga

Qanurittuq urhuqyuaq hunavaluit aturninnga:	Urhuqyuaq Qanurittuq	Qaffiuyut qattaryut	Qattaryuk Aktikkulaanga	Atauttimut Qaffiuyut	Ilanga	Qanuq Atuqtauniarmangaa
Diesel	fuel	0	0	0	Liters	for machineary
No hazardous material or chemicals will be used	hazardous	0	0	0	Kg	Nothing

Imaqmik Aturninnga

Ubluq qanuraaluk (m3)	Aturumayain imavaluin utiqtittagaani qanuq	Atulirumayain imavaluin utiqtittagani humi
0		

Iqqakuq

Ikkakunik Munakgiyauyunik

Havauhikhaq Hulilukaarut	Qanurittuq Iqqakut	Ihumagiyauyuq Qanuraaluktut Atuqtait	Qanuq Iqqakuurniarmangaa	Halummaqtirarnirutikhan piyutin
Information is not available				

Avatiliriniqmut Ayurhautingit:

It is an access trail to a campsite. The trail will be 3 km. This will impact the environment by being an gravel access trail. No land will be dug up, gravel will be brought to site and put onto the tundra to create an access trail. The gravel will only be applied to the trail and to no other location. The access trail will be half a meter depth and 6 meters wide. The trail will not be going over any bodies of water only over the tundra.

Additional Information

SECTION A1: Project Info

SECTION A2: Allweather Road

SECTION A3: Winter Road

SECTION B1: Project Info

SECTION B2: Exploration Activity

SECTION B3: Geosciences

SECTION B4: Drilling

SECTION B5: Stripping

SECTION B6: Underground Activity

SECTION B7: Waste Rock

SECTION B8: Stockpiles

SECTION B9: Mine Development

SECTION B10: Geology

SECTION B11: Mine

SECTION B12: Mill

SECTION C1: Pits

SECTION D1: Facility

SECTION D2: Facility Construction

SECTION D3: Facility Operation

SECTION D4: Vessel Use

SECTION E1: Offshore Survey

SECTION E2: Nearshore Survey

SECTION E3: Vessel Use

SECTION F1: Site Cleanup

SECTION G1: Well Authorization

SECTION G2: Onland Exploration

SECTION G3: Offshore Exploration

SECTION G4: Rig

SECTION H1: Vessel Use

SECTION H2: Disposal At Sea

SECTION I1: Municipal Development

Qanurittuq Ittunik Avatinga: Avatingalluanga

Qanurittuq Ittunik Avatinga: Inuuhimayunut Avatinga

Qanurittuq Ittunik Avatinga: Inungit-maniliurutingit Avatinga

Miscellaneous Project Information

Naunaiyainiq ukuninnga Ayurhautingit unalu Piumayaat Ikikliyuumiutinahuarutit

Tamatkiumayunik Ihuikgutivaktunik

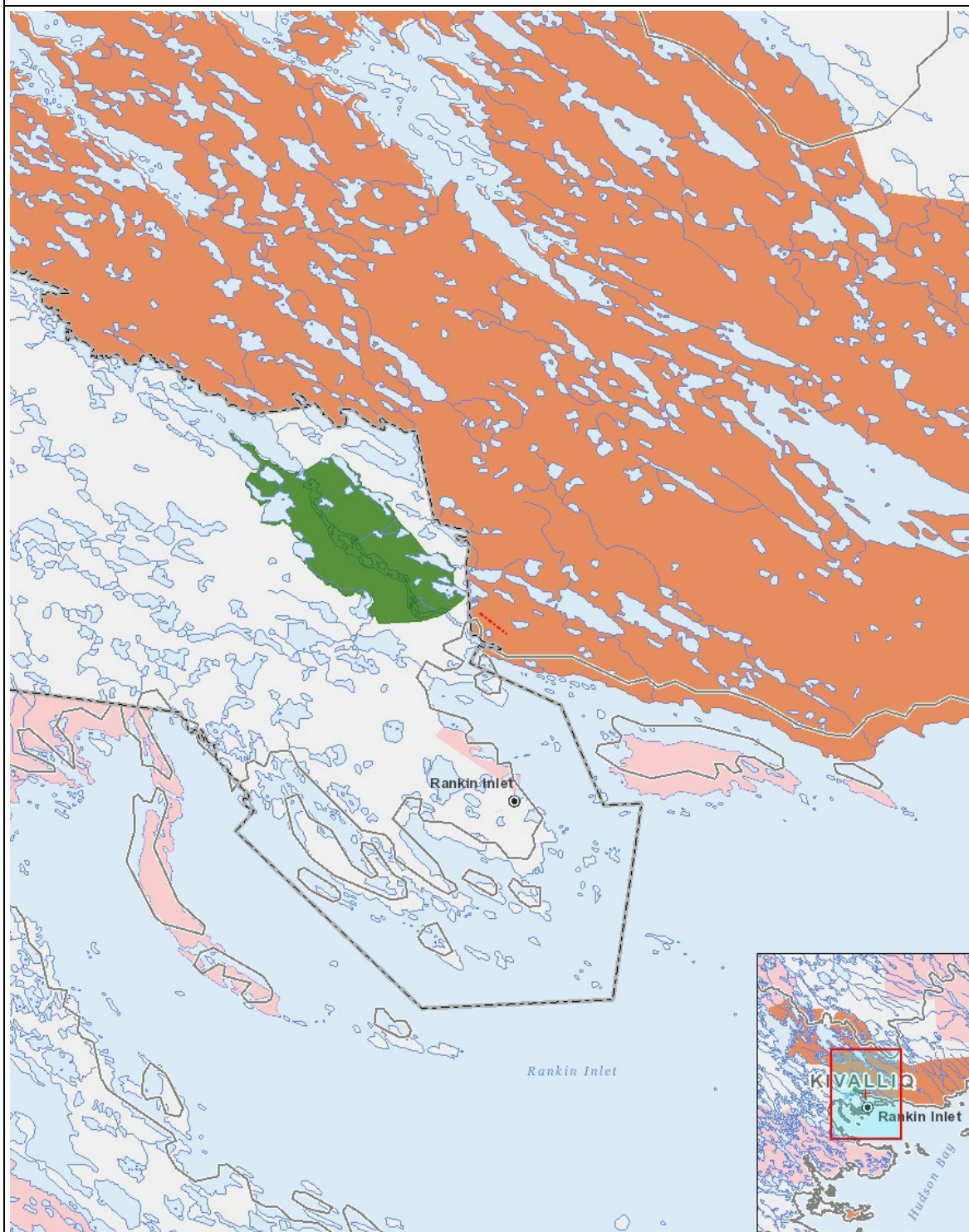
Impacts

Ilitariyauniq Avatiliriniqmut Ayurhautingit

		PHYSICAL	Designated environmental areas	Ground stability	Permafrost	Hydrology / Limnology	Water quality	Climate conditions	Eskers and other unique or fragile landscapes	Surface and bedrock geology	Sediment and soil quality	Tidal processes and bathymetry	Air quality	Noise levels	BIOLOGICAL	Vegetation	Wildlife, including habitat and migration patterns	Birds, including habitat and migration patterns	Aquatic species, incl. habitat and migration/spawning	Wildlife protected areas	SOCIO-ECONOMIC	Archaeological and cultural historic sites	Employment	Community wellness	Community infrastructure	Human health
Havakvinga																										
-		-	-	-	-	-	-	-	-	-	-	-	-	-	-	-	-	-	-	-	-	-	-	-	-	-
Aulapkaininnga																										
-		-	-	-	-	-	-	-	-	-	-	-	-	-	-	-	-	-	-	-	-	-	-	-	-	-
Piiqtauniq																										
-		-	-	-	-	-	-	-	-	-	-	-	-	-	-	-	-	-	-	-	-	-	-	-	-	-

(P = Nakuuyuq, N = Nakuungittut unalu mikhilimaittuq, M = Nakuungittut unalu mikhittaaqtuq, U = Naluyauyuq)

Havaariyauyukhamut Nayugaa



List of Project Geometries

- 1 polyline From the Meliadine Road. This is not a exact drawing of the access trail.