



NIRB Uuktuutinga Ihivriuqhikhamut #125847

Access Trail to campsite

Uuktuutinga Qanurittuq:	New
Havaap Qanurittunia:	Atuinakgiallgit Apkuutit
Uuktuutinga Ublua:	8/10/2023 9:51:31 AM
Period of operation:	from 2023-03-09 to 2023-10-29
Havauhikhaq Ikayuqtinga:	Linda Pulaarvik Kublu Friendship Centre Po Box 429 Rankin Inlet Nunavut X0C-0G0 Canada Hivayautit Nampanga:: 867-645-2600, Kayumiktukkut Nampanga::

Hulilukaarutit

Inigiya	Hulilukaarut Qanurittuq	Nunannga Qanurittaakhaanik	Initurlinga qanuritpa	Initurlinga utuqqarnitat unaluuniit Ingilraaqnitat Uyarannguqtut akhuurninnga	Qanitqiyauyuq qanitqiamut nunallaat kitulluuniit ahiruqtailiyainnit nuna
From the Meliadine Road. This is not a exact drawing of the access trail.	Access Road	Inuit Owned Surface Lands	I don't know	No archeological sites noted to the area	approximately 13 km access trail or road from Rankin Inlet. Or a 7 km distance by snowmobile
From the Meliadine Road. This is not a exact drawing of the access trail.	Access Road	Inuit Owned Sub-Surface Lands	None that we know of.	There is no archeological site noted in the area	approximately 13 km access trail or road from Rankin Inlet. Or a 7 km distance by snowmobile

Nunaliin Ilauyun, Aviktuqhimayuniitunullu Ikayuuhiarunguyun

Nunauyuq	Atia	Timiuyuq	Upluani Uqaqatigiyaungmata
Kangirliniq	Linda	Pulaarvik Kublu Friendship Centre	2024-03-13

Angiuttauvaktunik

Naunaiqlugu nunanga talvani havauhikhaq ittuq:

Kivalliq

Angiuttauvaktunik

Munariniqmut Ayuittiaqtuq	Angirutinga Qanurittuq	Tadja Qanurittaakhaanik	Ublua Tuniyauyuq/Uuktuqtuq	Umikvikhaa Ublua
Kivalliq Inuit Katimayiit	Instructed the process of an access trail approval. Support of an access trail because we are a non-profit Inuit organization provide services to the Kivalliq region.	Active	2022-09-22	
Kivalliq Inuit Katimayiit	Instructed the process of an access trail approval. Support of an access trail because we are a non-profit Inuit organization provide services to the Kivalliq region.	Active	2024-03-13	2026-10-27

Project transportation types

Transportation Type	Qanuq Atuqtauniarmangaa	Length of Use
Land		

Project accomodation types

Alaanut,

Ihuaqutivaluin Atuqtauyukhan

Hanalrutit atuqtaunahuat (ukuallu ikuutat, pampiutainnik, tingmitinik, akhaluutinik, hunaluuniit)

Hanalrutit Qanurittuq	Qaffiuyut	Aktikkulaanga – Qanurittullu	Qanuq Atuqtauniarmangaa
International Tandem Dump truck	2	16' 8'6 22'	Deliver Gravel
CAT Compactor/ Roller	1	W 2.29' L 5.51 H 3.07	To Smooth Road gravel
CAT 320 Excavator	1	W3.17 L9.53 H3.07	To Build access trail to campsite
CAT 950 Loader	1	W 7.9' L 20.25' H10.9'	To build access road to campsite
Grader CAT 140	1	L28.58' W 8.17'	To Build Access Road to Campsite
CAT D6 Dozer	1	L 5.435m W 2.54m H 3.172m	To Build access road to Campsite
Ford Pick up F150	2	Not sure	Drive employees to site

Qanurittuq Urhuqyuaq unalu Qayangnaqtut Hunavaluit Aturninnga

Qanurittuq urhuqyuaq hunavaluit aturninnga:	Urhuqyuaq Qanurittuq	Qaffiuyut qattaryut	Qattaryuk Aktikkulaanga	Atauttimut Qaffiuyut	Ilanga	Qanuq Atuqtauniarmangaa
Diesel	fuel	0	0	0	Liters	for machineary
No hazardous material or chemicals will be used	hazardous	0	0	0	Kg	Nothing

Imaqmik Aturninnga

Ubluq qanuraaluk (m3)	Aturumayain imavaluin utiqittagaani qanuq	Atulirumayain imavaluin utiqittagani humi
0		

Iqqakuq

Ikkakunik Munakgiyauyunik

Havauhikhaq Hulilukaarut	Qanurittuq Iqqakut	Ihumagiyauyuq Qanuraaluktut Atuqtait	Qanuq Iqqakuurniarmangaa	Halummaqtirarnirutikhan piyutin
Access Road	Other, None	0	No waste used	There was no waste used

Avatiliriniqmut Ayurhautingit:

It is an access trail to a campsite. The trail will be 3 km. This will impact the environment by being an gravel access trail. No land will be dug up, gravel will be brought to site and put onto the tundra to create an access trail. The gravel will only be applied to the trail and to no other location. The access trail will be half a meter depth and 6 meters wide. The trail will not be going over any bodies of water only over the tundra.

Additional Information

SECTION A1: Project Info

SECTION A2: Allweather Road

SECTION A3: Winter Road

SECTION B1: Project Info

SECTION B2: Exploration Activity

SECTION B3: Geosciences

SECTION B4: Drilling

SECTION B5: Stripping

SECTION B6: Underground Activity

SECTION B7: Waste Rock

SECTION B8: Stockpiles

SECTION B9: Mine Development

SECTION B10: Geology

SECTION B11: Mine

SECTION B12: Mill

SECTION C1: Pits

SECTION D1: Facility

SECTION D2: Facility Construction

SECTION D3: Facility Operation

SECTION D4: Vessel Use

SECTION E1: Offshore Survey

SECTION E2: Nearshore Survey

SECTION E3: Vessel Use

SECTION F1: Site Cleanup

SECTION G1: Well Authorization

SECTION G2: Onland Exploration

SECTION G3: Offshore Exploration

SECTION G4: Rig

SECTION H1: Vessel Use

SECTION H2: Disposal At Sea

SECTION I1: Municipal Development

Qanurittuq Ittunik Avatinga: Avatingalluanga

Qanurittuq Ittunik Avatinga: Inuuhimayunut Avatinga

Qanurittuq Ittunik Avatinga: Inungit-maniliurutingit Avatinga

Miscellaneous Project Information

Naunaiyainiq ukuninnga Ayurhautingit unalu Piumayaat Ikikliyuumiutinahuarutit

Tamatkiumayunik Ihuikgutivaktunik

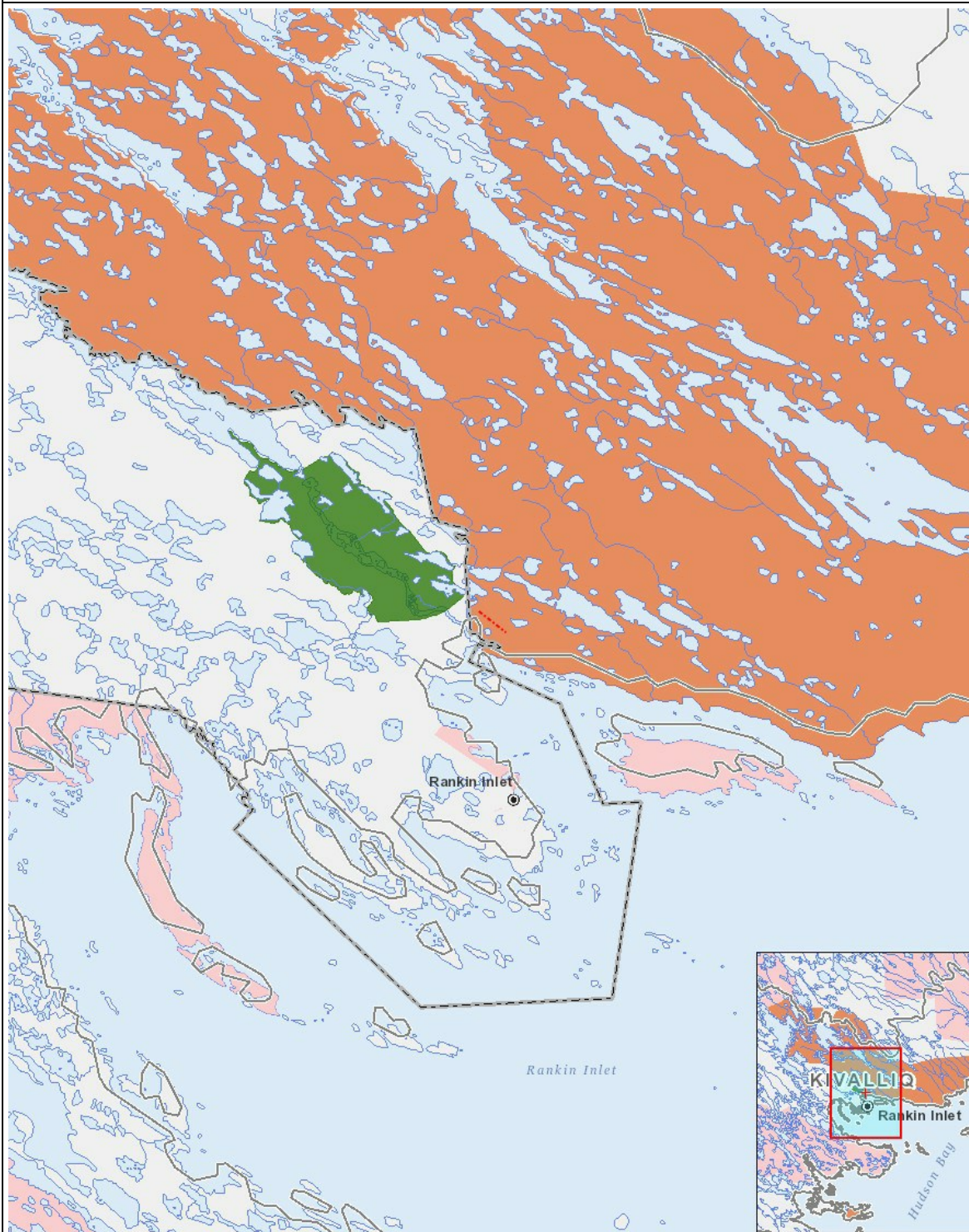
Impacts

Ilitariyauniq Avatiliriniqmut Ayurhautingit

	PHYSICAL	Designated environmental areas	Ground stability	Permafrost	Hydrology / Limnology	Water quality	Climate conditions	Eskers and other unique or fragile landscapes	Surface and bedrock geology	Sediment and soil quality	Tidal processes and bathymetry	Air quality	Noise levels	BIOLOGICAL	Vegetation	Wildlife, including habitat and migration patterns	Birds, including habitat and migration patterns	Aquatic species, incl. habitat and migration/spawning	Wildlife protected areas	SOCIO-ECONOMIC	Archaeological and cultural historic sites	Employment	Community wellness	Community infrastructure	Human health
Havakvinga	-	-	-	-	-	-	-	-	-	-	-	-	-	-	-	-	-	-	-	-	-	-	-	-	-
Aulapkaininnga																									
Access Road		-	U	-	-	-	-	-	-	-	-	-	U	U	U	U	-	-		-	P	P	P	P	P
Piiqtauniq	-	-	-	-	-	-	-	-	-	-	-	-	-	-	-	-	-	-	-	-	-	-	-	-	-

(P = Nakuuyuq, N = Nakuungittut unalu mikhilimaittuq, M = Nakuungittut unalu mikhittaaqtuq, U = Naluyauyuq)

Havaariyauyukhamut Nayugaa



List of Project Geometries

- 1 polyline From the Meliadine Road. This is not a exact drawing of the access trail.