



New

## Mineral Exploration

1/30/2024 5:31:04 PM

from 0001-01-01 to 0001-01-01

from 0001-01-01 to 0001-01-01

Samuel Robb  
Bronzite Exploration Corp.  
218 Holmwood Ave.  
Ottawa ON K1S 2P7  
Canada

▷ᵢᶜ▷ᵰᶜ: 6474027356, ᵰᵇᵈᵈᶜ:

כחלק מ

ፍጹሙ ጋር ለሥራ ለመገኘት ለሚችሉ ሰራተኞች

ᖃᓪᓗᓂᓂᓐ: The Somerset Trough Project is an early exploration program that will include the following activities: airborne and ground-based geophysical surveys, prospecting, sampling, and geological mapping. The program will be based out of an exploration camp constructed on Crown Land in the Western Somerset Island Watershed and will include a spring program to be conducted March to May, as well as a summer program to be conducted from July to early September. No drilling equipment or heavy machinery will be used for the 2024 program. Only hand tools and a power saw will be used to complete ground-based tasks. Helicopters and fixed-wing aircraft will be used to move personnel to and from field locations and to collect airborne geophysical data. Helicopter operations will be based mainly at the camp, but fixed-wing aircraft will be based off site and called in, as required, to conduct surveys and support operations. The camp will include a series of Weatherhavens for accommodations, dining, camp dries, storage, sample processing, and first aid as well as a small generator building and a small metal building to enclose the camp incinerator. The Weatherhavens will be heated with diesel heaters complete with spill protection. Any fuel caches associated with the program will be reported to the territorial engineer in accordance with the Territorial Land Use Regulations. Minimal water will be used for this exploration program. Surface water will be collected from a nearby water body with a pump or portable containers and used for cooking, drinking, and washing in camp. It is anticipated that 10 m<sup>3</sup> or less of water will be used each day to accommodate the staff members. Greywater will be deposited to a sump located more than 31 m from the ordinary high-water mark of any body of water. Human waste will be collected using Pacto toilets and the waste will be incinerated daily along with domestic waste. All water use and waste deposition will be documented and available for review as per requirements of the Nunavut Water Regulations.

▷Δ&∩D<sup>c</sup>: Le Somerset Trough Project est un programme d'exploration précoce qui inclura les activités suivantes : les levés géophysiques aériens et terrestres, la prospection, l'échantillonnage et la cartographie géologique. Le programme se basera à un camp d'exploration construit sur les terres de la Couronne dans le bassin ouest de l'île Somerset et inclura un programme de printemps réalisé entre mars et mai, ainsi qu'un programme d'été réalisé entre juillet et le début de septembre. Aucun équipement de forage ni de machinerie lourde sera employé pendant le programme de 2024. Seulement les outils à main et une scie mécanique vont être utilisés pour compléter les tâches sur le sol. Les membres du personnel utiliseront des hélicoptères et des aéronefs à voilure fixe pour se déménager sur le terrain et pour recueillir les données de levés géophysiques aériens. L'exploitation d'hélicoptères se fera surtout au camp, alors que les aéronefs à voilure fixe se baseront à l'extérieur du site et seront appelés pour compléter les levés et pour supporter les opérations. Le camp va contenir une série de Weatherhavens pour l'hébergement, l'espace repas, les vestiaires, le stockage, le traitement des échantillons et premiers secours, ainsi qu'un petit bâtiment pour la génératrice et un petit bâtiment en métal pour contenir l'incinérateur du camp. Les Weatherhavens seront chauffés avec des chauffages au diesel avec protection de déversement. Tous les dépôts de carburants seront portés à la connaissance de l'ingénieur territorial, conformément au Règlement sur l'utilisation des terres territoriales. Le programme d'exploration utilisera un minimum d'eau. L'eau de surface sera recueillie d'une masse d'eau avoisinante par pompe ou par un réservoir portatif et sera utilisée pour la cuisine, l'eau à boire et le lavage au camp. Il est anticipé que 10 m<sup>3</sup> ou moins vont être utilisés à chaque jour par les membres du personnel. L'eau usée sera déposée dans un puisard à une distance de plus de 31 m de la laisse des hautes eaux ordinaires de la masse d'eau la plus proche. Les déchets humains seront collectés par des toilettes Pacto et les déchets seront incinérés quotidiennement avec les déchets domestiques. Tous les utilisations d'eau et les dépôts de déchets vont être documentés et disponibles pour consultation, conformément aux exigences du Règlement sur les eaux du Nunavut.

[illegible]

[illegible]

Inuinnaqtun: Somerset Trough-mik Havaaq atulihaqhimayuuq nalvaqhiuqvikmik havaamik ilaqaqniaqtmik ukuniga hulijutininik: hilainakmik nunamiklu pijutiaqtut qanuriniginik naunaiyautit, qiniqhianik uyaraktaqvikhanik, ilituqhaujutit uyaqanik, uyaraktaakhaniklu nunaiyiurutini. Havaaq iniaqniaqtuq qiniaqhiayunit hiniktaqvianit hanahimayumik Kuin Nunagiyani Ualiqhiani Somerset-mi Qigigtami Immaqaqngani ilaqaqniaqhunilu upinaami havaamik atuqtukhamik March-mit May-mut, auyamilu havaamik atuqtukhamik July-mit atulihagnganut September. Ikutaqnik agiyunikluniit igniqutiliknik atulimagitut 2024-mi havaami. Algaknut hanalrutinik kihiani alruyaqtuqtumiklu uluunmik atuqtauniaqtut iniqtiriagani maniqami havaakhat. Halikaptat tikmijalu atuqtauniaqtut akyariagani havaktut talvuga talvangalu maniqami inigiyaayunit katitiriyaaganilu hilainaguuqtut nunamiutanik naunaiyutininik. Halikaptanik atuqnig it gluppaqavikmilua atuqtauniaqtut, kihiani tikmij at anianiiniaqtut inigiyaayut tikiyuqaulutiklu, piyariaqaliraagat, naunaiyaiyaagani havaktut ikayuqlutiklu aulaniginik. Inigiyaayut maniqami ilaqaqniaqtuq Anurailrumiuviknik hinikhaqvikhanik, nirivikhani, panighiiviknik, tamayaqavikmik, ilituqhaivikmik, munaqhivikmiklu aniaqtuqaqat ila mikiyuqlu igniqutinuq alruyaqtuutitavik igluqpak mikiyuqlu havigalik igluqpak iluaniitaagani ikulatavikmik iqagunik. Uquaquviit unaqtuqniaqtut uqhuqyuanik uunaqtunit kuviiyuqaqat akiutaqatunik. Kituliqaa uqhuqyuaqavik ilagiyaayut havaami uqautuniaqtut ukiuqatutumi hanayakhanik ihuaqhaiyut atuqlugit Ukiuqatutumi Nunanik Atuniginik Maliruaguyuuq. Mikiyuq immaq atuqtauniaqtuq uvani nalvaqhiuqvikmi havaami. Qaganit immaq katititqtauniaqtuq qanitanit immaqmit papautikut immiqtautinuluniit atuqtaulutiklu igayutikhani, immigakhanik, uaqtirutikhanik igluqpaqavikmi. Nahuriyaayuuq 10 m3 -mik mikitqiyamiluniit immaqnik atuqtauniaqtuq ublutuaraagat atuqtakhaenik havaktuni ilaayut. Atagut kuviyauniaqtut immarikhitiivikmi iniaqluni uganitqiyamik 31-miitanik imaukagniganit kituliqaa immaqaqnganit. Inuit annaguit/quvalu it katititqtauniaqtut Pacto-nik quiviknik atuqlutik ikulatiyaulutiklu ublutuaraagat ukualu iqaguvalu it inuknit. Tamaita immaqnik atuqnig it atagulu titiraqtauniaqtut qahaklutiklu ihivriutqauyaagani aturiaqaqnganit ukua Nunavumi Immaliqiyit Maliruagini.

## Personnel

Personnel on site: 14

Days on site: 120

Total Person days: 1680

Operations Phase: from 2024-03-15 to 2024-09-01

Λ Γ Δ Ε Ζ Η Θ Ι Κ Λ Μ Ν Ξ Ο Π Ρ Σ Τ Υ Φ Χ Ψ Ω

ᐱᓯ	ᖃᓄᐱᑦᑐᒥᑦ ᐱᓕᓚᐱᖃᑦᓂᐱᑦᐸ	ᑭᑦᑲᑦ ᓄᐱᑦᑳᑦᓂ	ᑐᔨᐅᒪᔭᔭᑦ ᓄᐱᐅᑦ ᖃᓄᖃ ᐱᑐᓚᐅᐱᐅᖃᑦᑭᒪᔭᓚᐱᖃᓚᓂᑦ	ᐱᑦᑭᓂᑦᓂᖃᑦᐱᐅᐱᐱᐅᖃᑦ ᐱᓄᖃᓄᑦ ᐱᑦᑭᑦᑲᑦᓂᖃᑦᓂᑳᐱᑦ ᑕᐱᑦᑭᒪᓂᑐᖃᐅᓕᖃᑐᖃᑦ	ᖃᓂᓇᓂᖃᑦᐸᖃᑦ ᓄᐱᓕᒥᔭᐅᑦᑶᖃᑦ ᐱᑦᒪᑐ ᔨᑦᑭᖃᑦᐱᐅᐱᑦ ᓴᓄᑦ
Somerset Trough Project Area	Mineral Exploration	Crown	A small exploration program was completed by Bronzite in 2023 on Somerset Island (the Crowberry Project), but the Somerset Trough Project will cover a more expansive area.	To be determined prior to any high-impact activities such as drilling.	The closest communities are Resolute Bay to the north and Taloyoak to the south of the project. Part of the project area overlaps with IOL in the QIA territory, but the QIA has determined that Bronzite does not require an authorization from QIA because no ground based work, fuel caches, or camps will be located on IOL.
Camp location	Camp	Crown	Area ground-truthed during the 2023 Bronzite Crowberry Project	To be determined prior to any high impact activities such as drilling. All findings will be reported to the proper authorities.	The closest communities are Resolute Bay to the north and Taloyoak to the south of the project. The camp is not located on a sensitive or protected area as defined by the North Baffin Land Use Plan or the Draft Nunavut Land Use Plan.

ፌዴራል ልረጅኔ ምኒስ ፌዴራል ልገጅ ምኒስ ልገጅ ምኒስ ልገጅ ምኒስ

<b>ᐃᓇᑦᕈᖅ</b>	<b>ᐱᐣ</b>	<b>ᔭᑐᙳᐸᑦᕆᐢᕈᖅ</b>	<b>ᑦᕿᕊ ᑐᙳᑦᕆᑐᐸᕋᐱᐸᐴᒃᓂ</b>
ᐸᑦᕊᐸ	Joel Fortier	QIA	2023-12-11
ᑦᕆᐸᐸᑐᑦ ᑲᙯᐸ	Aziz Kheraj	Hamlet Mayor	2023-09-29

ᖃᐅᐱᐅᐅᐅᐅ ᖃᖃᐅᐅ	Administrator	HTO	2024-01-31
ᐅᐅᐅᐅᐅᐅᐅ	Administrator	HTO	2023-12-11
ᐅᐅᐅᐅᐅᐅᐅ	Tannis Bolt	KitIA	2023-12-11



A<sup>c</sup>d<sup>c</sup> d<sup>a</sup>r<sup>c</sup><sup>b</sup> d<sup>c</sup><sup>b</sup>C<sup>b</sup>D<sup>b</sup>σd<sup>a</sup>r<sup>c</sup><sup>b</sup> ΔL<sup>c</sup>b<sup>a</sup>D<sup>a</sup>N<sup>a</sup>r<sup>c</sup> Δd<sup>c</sup>CΔ<sup>c</sup>, Γ<sup>c</sup>-<sup>a</sup>d<sup>a</sup>p<sup>a</sup>n<sup>c</sup>, <sup>b</sup>b<sup>a</sup>L<sup>c</sup>C<sup>a</sup>i<sup>b</sup>, m<sup>a</sup>e<sup>a</sup>r<sup>c</sup>D<sup>c</sup> d<sup>a</sup>r<sup>c</sup><sup>b</sup>-<sup>a</sup>

ᐃᓕᓕᓕᓕ ᐱᓕᓕ ᐃᐃᐃᐃᐃᐃᐃᐃᐃ ᐃᐃᐃᐃᐃᐃᐃᐃᐃ	ᐃᓕᓕᓕᓕᓕ	ᐃᓕᓕᓕᓕᓕ - ᐃᓕᓕᓕᓕᓕ	ᐃᓕᓕᓕᓕᓕ ᐃᐃᐃᐃᐃᐃᐃᐃᐃ
ATV	1	211 x 120 x 122 cm	Transporting personnel to nearby field sites, transporting supplies
Snowmobile	1	185 x 91 x 86 cm	Transporting personnel to nearby field sites, transporting supplies
A-Star B3 Helicopter	2	12.94 x 10.69 x 3.14 m	Transporting personnel, conducting airborne surveys

በበፍጥነታችን ምሳሌ ለሌሎች ለማሳሰብ ልንችልናል።

Aircraft fuel	fuel	400	205	82000	Liters	Aircraft fuel
Diesel	fuel	95	205	19475	Liters	Heating and incinerator fuel
Gasoline	fuel	5	205	1025	Liters	Generator fuel
Liquid nitrogen	hazardous	2	20	40	Liters	Used during ground geophysical surveys during Summer Program

AL<sup>5b</sup> ◀<sup>5b</sup> C ▶<sup>5b</sup> L<sup>5b</sup> ◀<sup>5b</sup>

ᐅᓪᓴ ᑕᐱᓪᓴ ᐱᐅᓪᓴᐅᓪᓴᐅᓪᓴ	ᓪᓴᓪᓴ ᐱᐅᓪᓴᑕᓪᓴᑕᓪᓴᐅᓪᓴᐅᓪᓴ	ᐱᐅᓪᓴ ᐱᐅᓪᓴᑕᓪᓴᑕᓪᓴᐅᓪᓴᐅᓪᓴ
10	Pump or portable containers	From a nearby watercourse

$$\Delta^b C d r n \sigma \Delta^c \sigma^c$$

$\triangleleft \nabla \cap \Gamma \triangleright C^{\circ} J^C \triangleleft^b J^{cb} C \triangleright L^c J^c$

Please see attached Environmental Protection Plan, Spill Contingency Plan, Waste Management Plan, and Wildlife Management Plan for complete details. Bronzite and its consultants are planning future baseline environmental studies to understand the biophysical and socio-economic components of the project area.



# **Additional Information**

## **SECTION A1: Project Info**

## **SECTION A2: Allweather Road**

## **SECTION A3: Winter Road**

## **SECTION B1: Project Info**

Copper exploration

## **SECTION B2: Exploration Activity**

Please see attached Project Description for details.

## **SECTION B3: Geosciences**

Please see attached Project Description for details.

## **SECTION B4: Drilling**

N/A

## **SECTION B5: Stripping**

N/A

## **SECTION B6: Underground Activity**

N/A

## **SECTION B7: Waste Rock**

N/A

## **SECTION B8: Stockpiles**

N/A

## **SECTION B9: Mine Development**

## **SECTION B10: Geology**

## **SECTION B11: Mine**

## **SECTION B12: Mill**

## **SECTION C1: Pits**

## **SECTION D1: Facility**

## **SECTION D2: Facility Construction**

The project camp is located on QIA territory, and the full project boundaries cover QIA and KIA territory. The closest communities to the project camp site are Taloyoak and Resolute Bay, both of which are roughly 300 km away. Bronzite will pursue archaeological surveys of the project area prior to any higher impact work such as drilling, and will report all archaeological findings. See Environmental Protection Plan for further details. Bronzite has been in communication with QIA and KIA about the project, and has reached out to the Resolute Bay Hunters and Trappers Organization to arrange a meeting to discuss how the land is used, issues of concern, and how the company can minimize impacts on wildlife and traditional activities in the area. Bronzite understands through engagement with QIA that the Inuit Owned Lands (IOL) on Somerset Island are particularly sensitive and sacred. Bronzite is not planning any ground-based work, fuel caches, or camps on IOL in 2024, but understands the process for applying with QIA in the future should that work become

necessary.

### Miscellaneous Project Information

Bronzite understands from engagement with QIA that Creswell Bay is a particularly sensitive area due to the abundance of Beluga Whales. Bronzite is not planning any high-impact work in the Creswell Bay area in 2024, but will continue to engage with QIA and the HTO to understand how best to mitigate risks in the area.

[illegible]

Please see attached Environmental Protection Plan, Waste Management Plan, Spill Contingency Plan, and Wildlife Management Plan.

## Cumulative Effects

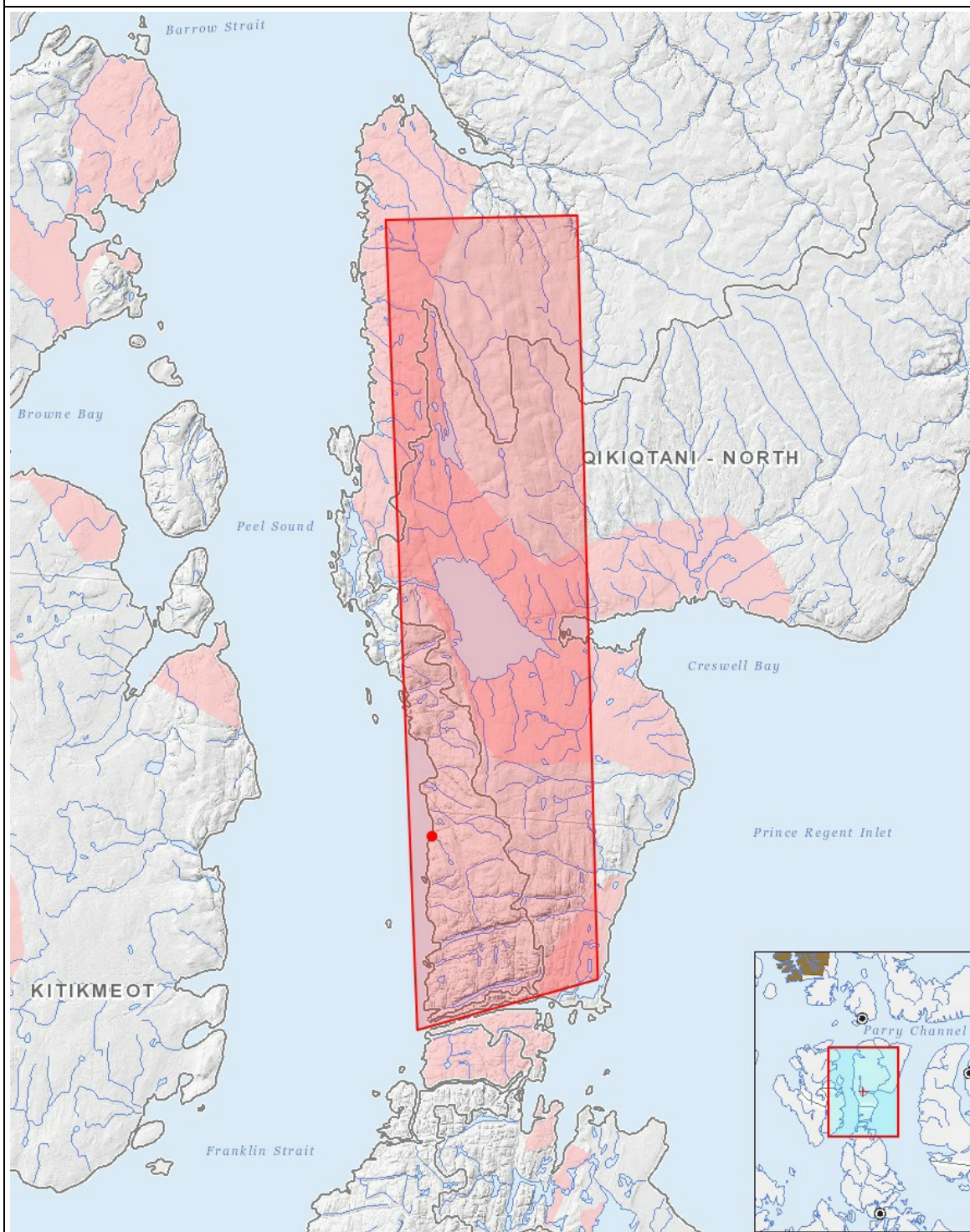
Bronzite will monitor cumulative impacts as the project progresses into more advanced mineral exploration (ie. drilling) and mine development. For 2024, the project remains a low-impact reconnaissance operation with ground-based mapping and surveys and airborne surveys.

## Impacts

$\mathbb{A}^1 \times \mathbb{A}^1 \xrightarrow{\sim} \mathbb{A}^1 \times \mathbb{A}^1$

[illegible]

( $P = \langle b \rangle_{\mathcal{A} \cap \mathcal{C}}$ ,  $N = \langle b \rangle_{\mathcal{A} \cap \mathcal{C}}$ ,  $M = \langle b \rangle_{\mathcal{A} \cap \mathcal{C}}$ ,  $U = \langle b \rangle_{\mathcal{A} \cap \mathcal{C}}$ )



List of Project Geometries

1	polygon	Somerset Trough Project Area
2	point	Camp location