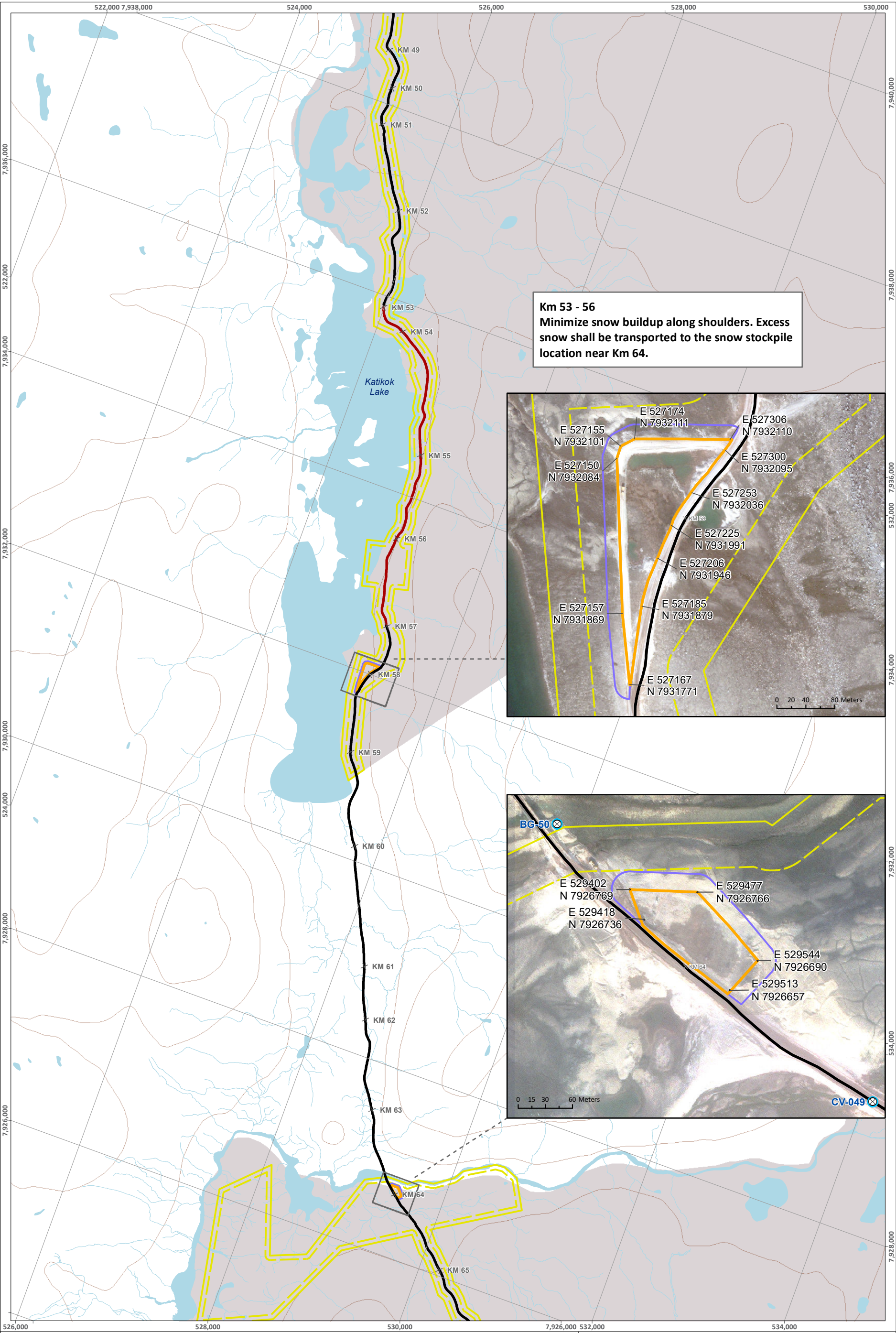


SAVED: C:\Users\katie.mcquinn\Documents\Mapa\Reporting2\_Management Plans\Snow MP\17 - 2310\BIM\_8\_ToteRoad - Snow 4.mxd; 01-Apr-24



LEGEND

- Water Crossing Monitored under Tote Road Monitoring Program
- Contour (20 m Interval)
- IOL Surface Only
- IOL Surface and Subsurface
- Commercial Lease Undisturbed Buffer Boundary
- Commercial Lease Boundary
- Snow to be Directed to the West Side of the Road
- Increased Environmental Risk/ Special Instruction
- Snow Stockpile**

Staked Boundary

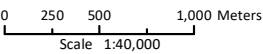
Ultimate Boundary (20 M Buffer)

ᓄᓄᓄᓄ ᓄᓄᓄᓄᓄᓄ

MARY RIVER PROJECT

Snow Management  
Tote Road (Sheet 4 of 6)

Projection: NAD 1983 UTM ZONE 17N.  
Base Map: © King's Printer for Ontario, 2023.  
© 2023 Digital Globe, Inc.  
Imagery and Infrastructure are representative as of July 2023.



ᓄᓄᓄᓄᓄᓄ ᓄᓄᓄᓄ  
FIGURE

8