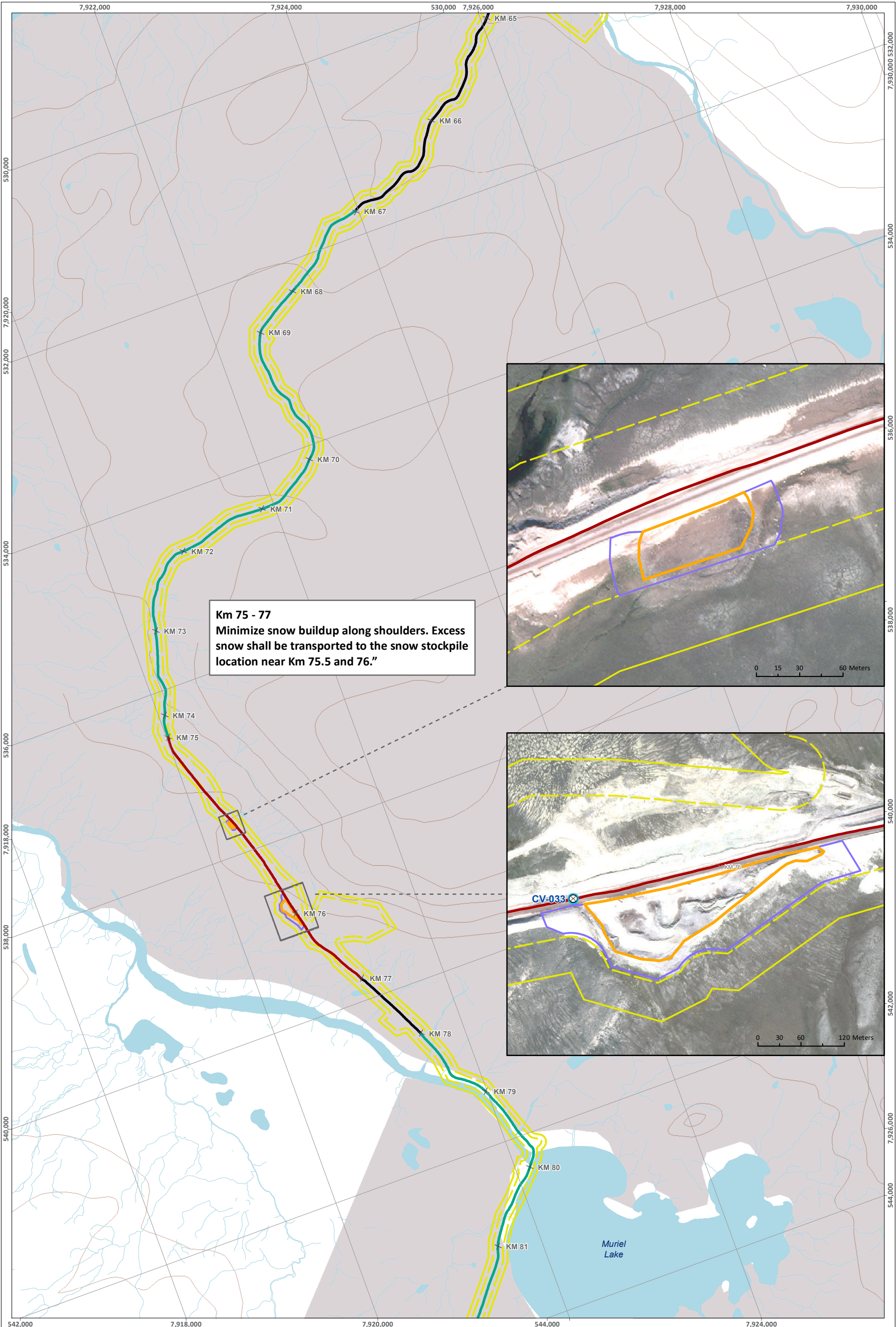


SAVED: C:\Users\skatie.mcquinn\Documents\4 - Maps\Reporting\2_Management Plans\Snow MP\17 - 2310\BM_9_ToteRoad - Snow 5.mxd; 02-Apr-24



LEGEND

- Water Crossing Monitored under Tote Road Monitoring Program
- Contour (20 m Interval)
- IOL Surface Only
- IOL Surface and Subsurface
- Commercial Lease Undisturbed Buffer Boundary
- Commercial Lease Boundary
- Snow to be Directed to the West Side of the Road
- Snow to be Directed to the East Side of the Road
- Increased Environmental Risk/ Special Instruction
- Snow Stockpile**

Staked Snow Stockpile Boundary

Approved Snow Stockpile Boundary

ᑭᓄᓐ ᑭᓄᓐ ᑭᓄᓐ

MARY RIVER PROJECT

Snow Management
Tote Road (Sheet 5 of 6)

Projection: NAD 1983 UTM ZONE 17N.
Base Map: © King's Printer for Ontario, 2023.
© 2023 Digital Globe, Inc.
Imagery and Infrastructure are representative as of July 2023.

0 250 500 1,000 Meters

Scale 1:40,000

ᑭᓄᓐ ᑭᓄᓐ ᑭᓄᓐ

FIGURE

9