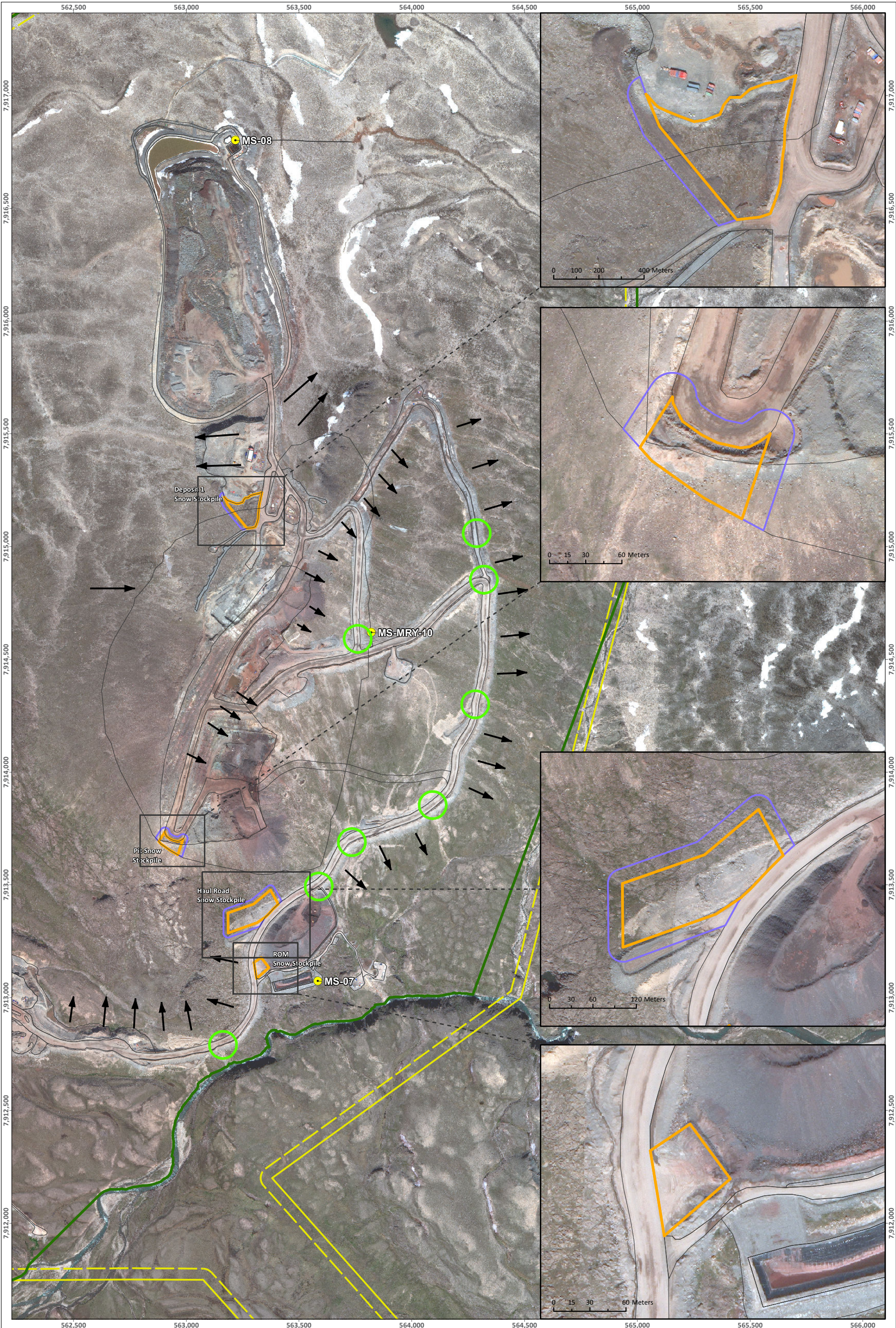


SAVED: C:\Users\katie.mcquinn\Documents\4 - Maps\Reporting\2 - Management Plans\Snow MP\17 - 2310\BIM\_11\_Haul Road - Snow.mxd; 02-Apr-24



**LEGEND**

- SNP Monitoring Location
- ⊗ Water Crossing
- ➔ Drainage Direction
- Do Not Place Snow within 31m of Culverts
- ▭ Project Development Area

- ▭ Commercial Lease Undisturbed Buffer Boundary
- ▭ Commercial Lease Boundary

**Snow Stockpile**

- ▭ Staked Snow Stockpile Boundary
- ▭ Approved Snow Stockpile Boundary

ᑭᓄᓐ ᑭᓄᓐ ᑭᓄᓐ

MARY RIVER PROJECT

**Snow Management  
Haul Road**

Projection: NAD 1983 UTM ZONE 17N.  
Base Map: © 2024 Digital Globe, Inc.  
Imagery and Infrastructure are representative as of July 2023.

0 100 200 400 Meters  
Scale 1:16,000

N

ᑭᓄᓐ ᑭᓄᓐ ᑭᓄᓐ  
**FIGURE**

**11**