



Demande de la CNER faisant l'objet d'un examen préalable #125979

Grise Fiord and Resolute Bay Field Program

Type de demande : New

Type de projet: Scientific Research

Date de la demande : 6/17/2024 11:45:42 AM

Period of operation: from 2024-06-26 to 2026-12-31

Promoteur du projet: Justin
Government of Nunavut
PO Box 1000 Stn 620
Iqaluit Nunavut (NU) X0A 0H0
Canada
Téléphone :: 867-975-5441, Télécopieur ::

DÉTAILS

Description non technique de la proposition de projet

Anglais: Worley Canada Services Ltd., operating as Worley Consulting, has been retained by the Government of Nunavut – Community & Government Services (GN-CGS) to support the detailed design of Community Harbour facilities in Grise Fiord and Resolute Bay in Nunavut. To inform the detailed design phase, several field programs will be undertaken over the next few years, initiating in the 2024 open-water season. This Project Description (PD) is specific to the field programs. The intention of the field programs, will be as below: •Conduct environmental, geoscience, geophysics, and archaeological baseline studies in each location. •Perform a geotechnical study to confirm seabed and quarry rock conditions. •Topographic and bathymetric surveys. •Existing conditions or effects studies prior to construction of the Community Harbours. Surveys will be conducted in two Study Areas: the Community Harbour and the Haul Road and Quarry. Maps depicting the Study Areas for each community are provided in Appendix A, Figure A-1 and Figure A-2 in the attached Application Letter. Field programs will largely be undertaken in open-water seasons, with the exception of the Geotechnical Drilling Program which may occur during the iced ocean condition. The initial 2024 existing conditions field program will be undertaken between July and September. Consultations on the Community Harbour facilities have been ongoing since the feasibility phase and have included six separate community visits from 2018 to 2022 to conduct meetings with the Hamlet, design workshops with the Hunters and Trappers Associations/Organizations (HTAs/HTOs), Inuit knowledge (Inuit Qaujimajatuqangit [IQ]) workshops with elders and active hunters, and community open houses. Meaningful consultation will be continued throughout the 'life cycle' of the Projects, including during the design and construction phases so that issues of concern can be identified and responded to in a timely manner and design and construction planning can be adjusted where possible to avoid and mitigate any adverse social or environmental effects. The next round of consultations is being planned for July 2024, before any field programs, and will focus on providing the communities with a Project update and general overview, confirming preferred options for the Community Harbour layouts, Quarries, and Haul Roads and discussing the field program activities including coordinating with the community for local support of workers and equipment for the field programs.

Français: NA

[illegible]

Inuinnaqtun: NA

Operations Phase: from 2024-06-26 to 2026-12-31

Activités

Emplacement	Type d'activité	Statut des terres	Historique du site	Site à valeur archéologique ou paléontologique	Proximité des collectivités les plus proches et de toute zone protégée
General location for Grise Fiord, located on the southern shore of Ellesmere Island in Jones Sound.	Scientific/International Polar Year Research	Municipal	Project area is an established longstanding community.	Archaeological field study is a component of the field program.	Community harbour located along 1.4 km of shoreline directly fronting the Grise Fiord community. Haul road: 14 km north of community. Quarry: 3 quarries of varying size.
General location for Resolute Bay, located on the south shore of Conwallis Island in Parry Channel.	Scientific/International Polar Year Research	Municipal	Project area is an established longstanding community.	Archaeological field study is a component of the field program.	Community harbour (CH) 1: 500 m along shoreline SW of the Resolute Bay community. CH 2: 1 km along shoreline fronting the community. Haul road: 3.3 km SE of CH 1 & 1.3 km SE of CH 2. Quarry 1: 7 km NW of CH study area. Quarry 2: 3.3 km SE of CH study area. Quarry 3: 1.7 km SE of CH study area

Engagement de la collectivité et avantages pour la région

Collectivité	Nom	Organisme	Date de la prise de contact
Grise Fiord	Amon Akeeagok	Iviq Hunters and Trappers' Organization	2024-05-27
Grise Fiord	Meeka Kigukta, Mayor	Hamlet of Grise Fiord	2024-05-27
Resolute Bay	Aziz, Mayor	Hamlet of Resolute Bay	2024-06-18

Resolute Bay	Nancy	Resolute Bay Hunters and Trappers' Organization	2024-06-18
--------------	-------	---	------------

Autorisations

Indiquez les zones dans lesquelles le projet est situé:

Autorisations

Organisme de régulation	Description des autorisations	État actuel	Date de l'émission/de la demande	Date d'échéance
Institut de recherche du Nunavut	Research Permit	Not Yet Applied		
Indigenous and Northern Affairs Canada	Land Use Permit	Not Yet Applied		
Gouvernement du Nunavut, Services communautaires et gouvernementaux	Land Use Permit- to be confirmed if required.	Not Yet Applied		
Pêches et Océans Canada	License to Fish for Scientific Purposes	Not Yet Applied		
Gouvernement du Nunavut, ministère de l'Environnement	Wildlife Research Permit	Not Yet Applied		
Gouvernement du Nunavut, ministère de l'Environnement	Vegetation (wildlife) export permit. (Local conservation officer)	Not Yet Applied		
Government of Nunavut, Department of Culture, Language, Elders, and Youth	Class 2 Permit	Not Yet Applied		
Office des eaux du Nunavut	Type B water license - to be confirmed if required	Not Yet Applied		

Project transportation types

Transportation Type	Utilisation proposée	Length of Use
Air	field crews will travel to the project area by plane from Vancouver	
Land	field crews will travel by foot or local truck within the communities	

Project accomodation types

Collectivité

Utilisation de matériel

Équipement à utiliser (y compris les perceuses, les pompes, les aéronefs, les véhicules, etc.)

Type d'équipement	Quantité	Taille – Dimensions	Utilisation proposée
Equipment	1	1	A variety of equipment will be required to undertake the planned Field Program. Please refer to Table 3-1 of the provided Application Letter which summarizes the equipment required for each of the Field Program components. Equipment may include small manual hand tools, iPads, transect line and quadrats, survey equipment such as remotely operated vehicles (ROVs) and unmanned aerial vehicles (UAVs), multi-beam survey equipment, and a track/skit mounted rotary drill rig.
Transportation Equipment	1	1	A variety of transportation equipment may be required, such as ATVs, vehicles, and boats. Transportation equipment required is provided in Table 3-1 of the provided Application Letter.

Décrivez l'utilisation du carburant et des marchandises dangereuses

Décrivez l'utilisation de carburant :	Type de carburant	Nombre de conteneurs	Capacité du conteneur	Quantité totale	Unités	Utilisation proposée
Sample Preservative	hazardous	1	1	1	Liters	Preservatives such as formalin, ethanol, and hydrochloric acid are required to preserve water and sediment quality samples for the marine-based Field Program components. Less than 1 millilitre of preservative will be required per sample bottle.

Consommation d'eau

Quantité quotidienne (m3)	Méthodes de récupération de l'eau proposées	Emplacement de récupération de l'eau proposé
0		

Déchets

Gestion des déchets

Activités du projet	Type des déchets	Quantité prévue	Méthode d'élimination	Procédures de traitement supplémentaires
Scientific/International Polar Year Research	Déchets non combustibles	limited amount (no bulk waste)	a 'pack in, pack out' policy	none required
Scientific/International Polar Year Research	Eaux usées (matières de vidange)	limited/ regular amount	use existing facilities.	none required

Répercussions environnementales :

Environmental impacts associated with the field programs are expected to be minimal. Potential impacts to terrestrial and marine habitat and wildlife may occur, however, all personnel will be accompanied by a local field assistant to confirm minimal disturbances. Minor disruptions to traditional land use may occur in the proposed study area, however, arrival of the research team will be advertised on local social media prior to arrival. There may be temporary sediment suspension in marine habitats due to grab sampling but the footprint of this activity is small and sediment disturbance will be minimal. Disturbance to heritage resources is possible, but unlikely. Measure to mitigate impacts are described in the Class 2 archaeological permit which was submitted to the C&H department. There will be an increase in anthropogenic presence in the Study Area but the research team is relatively small and are conducting non-invasive short term studies. Please see attached application letter Table 10-1.

Additional Information

SECTION A1: Project Info

SECTION A2: Allweather Road

SECTION A3: Winter Road

SECTION B1: Project Info

SECTION B2: Exploration Activity

SECTION B3: Geosciences

SECTION B4: Drilling

SECTION B5: Stripping

SECTION B6: Underground Activity

SECTION B7: Waste Rock

SECTION B8: Stockpiles

SECTION B9: Mine Development

SECTION B10: Geology

SECTION B11: Mine

SECTION B12: Mill

SECTION C1: Pits

SECTION D1: Facility

N/A

SECTION D2: Facility Construction

N/A

SECTION D3: Facility Operation

N/A

SECTION D4: Vessel Use

SECTION E1: Offshore Survey

SECTION E2: Nearshore Survey

SECTION E3: Vessel Use

SECTION F1: Site Cleanup

SECTION G1: Well Authorization

SECTION G2: Onland Exploration

SECTION G3: Offshore Exploration

SECTION G4: Rig

SECTION H1: Vessel Use

There will be a small vessel used for fish habitat, water quality, sediment quality, drogue, and bathymetric surveys.

SECTION H2: Disposal At Sea

N/A

SECTION I1: Municipal Development

Description de l'environnement existant : Environnement physique

Baseline studies of the physical environment were conducted in 2019 and will be conducted as a component of this field program. This will include surveys of the marine (subtidal and intertidal) and terrestrial habitats within the Study Areas.

Description de l'environnement existant : Environnement biologique

Baseline studies of the biological environment were conducted in 2019 and will be conducted as a component of the field program.

Description de l'environnement existant : Environnement socio-économique

Consultation programs have been ongoing since the feasibility stage of the project. Consultation program will be undertaken in each community prior to arrival of the field team to confirm local support and gather traditional knowledge to support the baseline assessments.

Miscellaneous Project Information

N/A

Identification des répercussions et mesures d'atténuation proposées

Potential impacts to terrestrial and marine habitat and wildlife may occur, however, all personnel will be accompanied by a local field assistant to confirm minimal disturbances. Minor disruptions to traditional land use may occur in the proposed study area, however, arrival of the research team will be advertised on local social media prior to arrival. There may be temporary sediment suspension in marine habitats due to grab sampling but the footprint of this activity is small and sediment disturbance will be minimal.

Disturbance to heritage resources is possible, but unlikely. Measure to mitigate impacts are described in the Class 2 archaeological permit which was submitted to the C&H department. There will be an increase in anthropogenic presence in the Study Area but the research team is relatively small and are conducting non-invasive short term studies. See Table 10-1 in application letter.

Répercussions cumulatives

Limited cumulative effects are anticipated, as most project components have mitigation measures in place that will limit impacts.

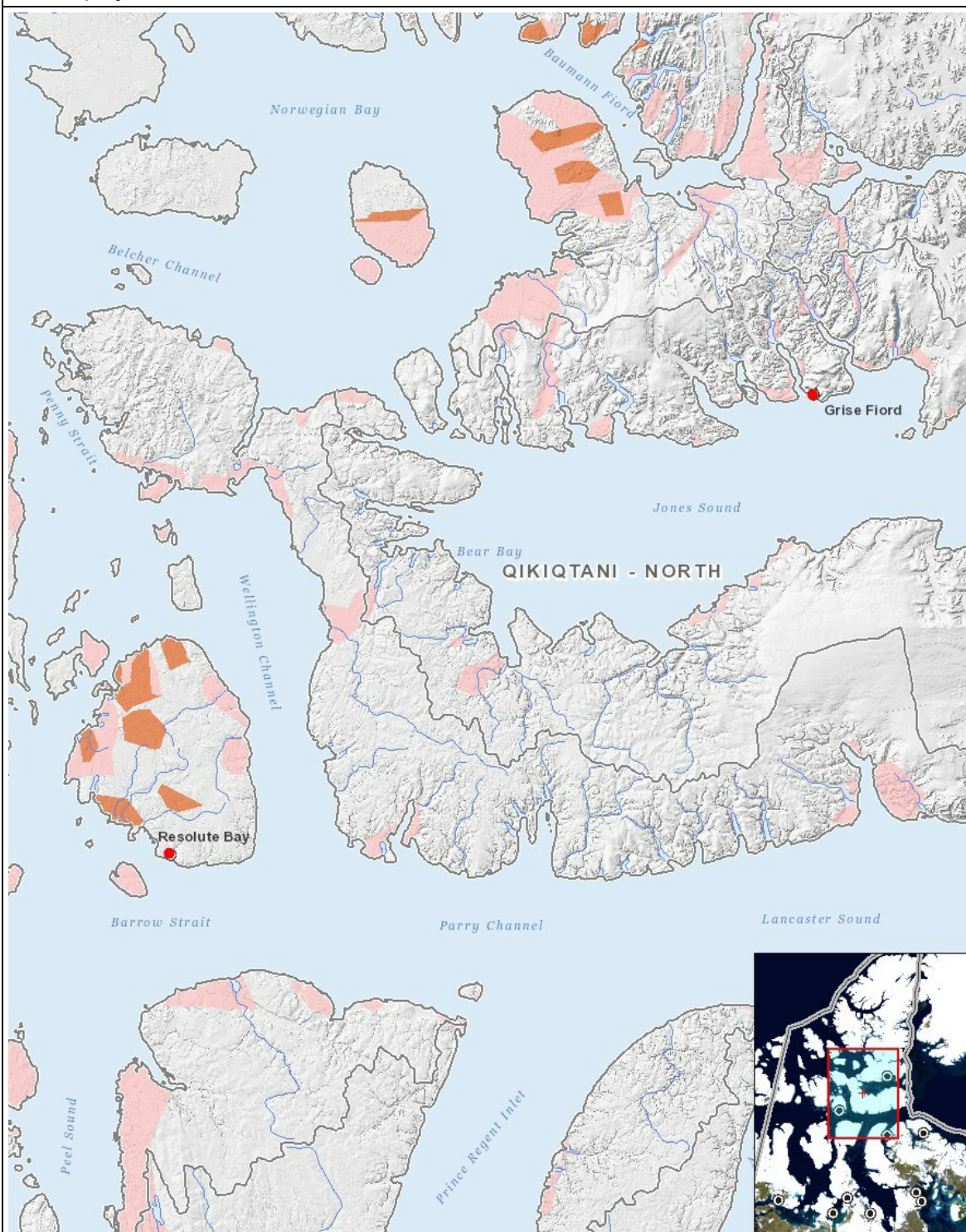
Impacts

Identification des répercussions environnementales

	PHYSICAL	Designated environmental areas	Ground stability	Permafrost	Hydrology / Limnology	Water quality	Climate conditions	Eskers and other unique or fragile landscapes	Surface and bedrock geology	Sediment and soil quality	Tidal processes and bathymetry	Air quality	Noise levels	BIOLOGICAL	Vegetation	Wildlife, including habitat and migration patterns	Birds, including habitat and migration patterns	Aquatic species, incl. habitat and migration/spawning	Wildlife protected areas	SOCIO-ECONOMIC	Archaeological and cultural historic sites	Employment	Community wellness	Community infrastructure	Human health
Construction																									
-	-	-	-	-	-	-	-	-	-	-	-	-	-	-	-	-	-	-	-	-	-	-	-	-	-
Exploitation																									
Scientific/International Polar Year Research	-	-	-	-	M	-	-	-	-	-	-	-	M	M	M	-	M	-	-	M	P	-	P	-	-
Désaffectation																									
-	-	-	-	-	-	-	-	-	-	-	-	-	-	-	-	-	-	-	-	-	-	-	-	-	-

(P = Positive, N = Négative et non gérable, M = Négative et gérable, U = Inconnue)

Site du projet



Liste des géométries de projet

- 1 point General location for Grise Fiord, located on the southern shore of Ellesmere Island in Jones Sound.
- 2 point General location for Resolute Bay, located on the south shore of Conwallis Island in Parry Channel.