



ፌዴራል ኮርት 1-1: ፖሊስ ለጥራት ማረጋገጫ ለሚያደርጉት

ለኖትረራሪ ለሞላው ስም	ለሞላው ስም ስም	ለሞላው/ጋራ ስም
ወይን ስም	ረብረብ ስም	150435
ወይን ስም ስም ስም	ስም ስም ስም	24YN030
ወይን ስም ስም ስም	ስም ስም ስም	02 045 24N-M
ስም ስም ስም ስም	ስም ስም ስም ስም	S-24/25-1071-NU
ስም ስም ስም ስም ስም ስም	ወይን ስም ስም ስም	N2024X0025 (ስም ስም ስም) N2024X0026 (ስም ስም ስም)
ወይን ስም ስም ስም ስም	ስም ስም ስም ስም ስም ስም	2024-59A (ስም ስም ስም) 2024-63A (ስም ስም ስም)

### 1.3. $\Lambda$ CDM-ის ობსერვაციები

[illegible]

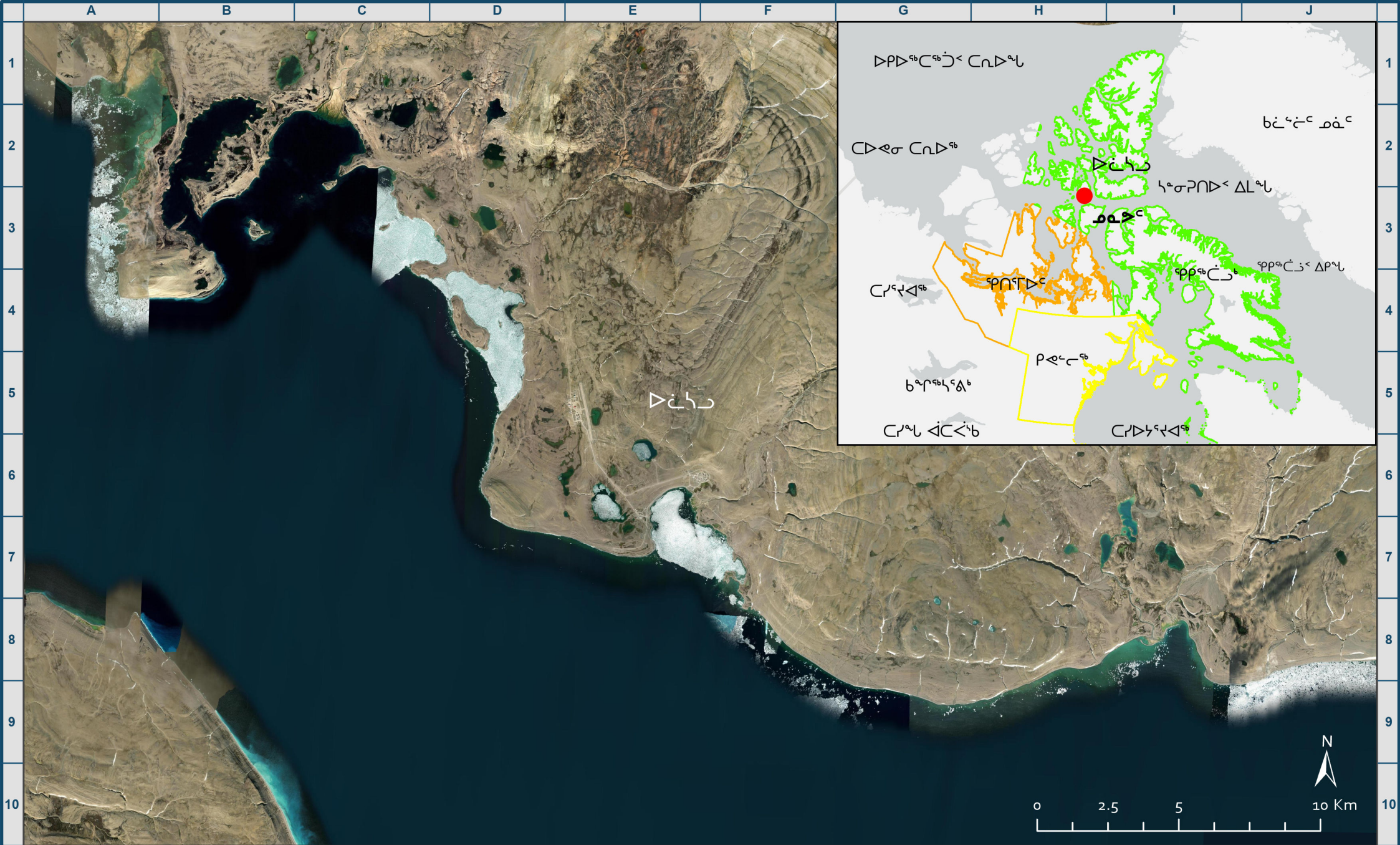
ᐃᓗᐃᐃᐃᐃᐃᐃ 1-2: ᐃᓕᐅ ᐱᓕᐅᐃᐃᐃᐃᐃᐃ ᐃᓂᐃᓂᐃᐃ

ደቡቅ	ደቡቅ-ምስራቅ ሰላሳጥንታዊ	ፊክራ	ፊክራ
ፊክራ	ደቡቅ-ምስራቅ ሰላሳጥንታዊ ርዕሰ ከተማ ነው።	76° 25.001'N	82° 54.935'W
ፊክራ	ደቡቅ-ምስራቅ ሰላሳጥንታዊ ርዕሰ ከተማ ነው።	74° 41.472'N	94° 51.549'W









Spatial Reference  
 Name: NAD 1983 CSRS UTM  
 Zone 15N  
 GCS: GCS North American 1983  
 CSRS  
 Projection: Transverse Mercator  
 Map Units: Meter

Figure 1-2: Resolute, Nunavut Location

20240411-001

Drawn By : CK

Edited By: CK

Approved By: VBC

"This drawing is prepared solely for the use of our customers as specified in the accompanying report.  
 Dynamic Ocean Consulting Ltd. assumes no liability to any other party for any representation contained in this drawing."



[illegible]

ዕጋዕፈፈርፍ 1-3: ለዕጋፍፍ ልዕሊ ምክርባዊና ምክርባዊ

[illegible]

2. የሥራ ልዩነት

## 2.1. $\Lambda$ CDM $\Delta\chi^2$ contours

[illegible]

- [illegible]

## 2.2. ንግድና ልማት ልማት

ክልሉ የጥቅም ሆኖ ሊያገለግል ይችላል፡፡ ለዚህም ማረጋገጫ ለጥቅም ሆኖ ሊያገለግል ይችላል፡፡ ለዚህም ማረጋገጫ ለጥቅም ሆኖ ሊያገለግል ይችላል፡፡

- $\mathcal{D} \triangleleft^b \mathcal{C} \triangleleft^b \mathcal{A}$ .

- $\mathcal{O}^b \subset \mathcal{O}^c \subset \mathcal{O}^d$
- $\mathcal{O}^b \subset \mathcal{O}^c \subset \mathcal{O}^d$

[illegible]

- [illegible]

ኖፕሊኖልድ ልማት ርእሰ ልማት ህጋዊ ርእሰ ልማት ለጥራት ሆኖ ኖፕሊኖልድ ልማት.

### 2.3. ሥርዓ ለጥራጥራጥራጥ ለጥራጥራጥ

[illegible]







SCH  $\Delta_{\sigma^2} \sigma^c \triangleleft \triangleright^{\sigma b} \triangleright \sigma \triangleright \sigma^c$

- ΛC<sup>+</sup>b<sub>2</sub>Δ<sup>0</sup> → ΔC<sup>+</sup>b<sub>2</sub>ΛC<sup>+</sup> Δ<sup>+</sup>b<sub>2</sub>Δ<sup>0</sup>
- ΛC<sup>+</sup>b<sub>2</sub>Δ<sup>+</sup> Δ<sup>+</sup>b<sub>2</sub>Δ<sup>+</sup> / Δ<sup>+</sup>Δ<sup>+</sup>Δ<sup>+</sup>
- Δ<sup>+</sup> Δ<sup>+</sup>Δ<sup>+</sup>Δ<sup>+</sup> Δ<sup>+</sup>b<sub>2</sub>Δ<sup>+</sup>

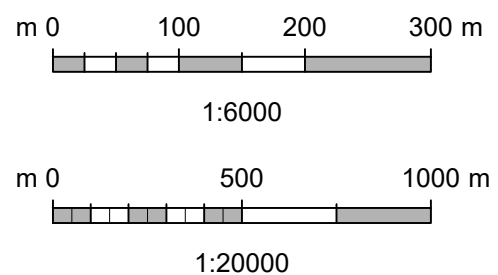
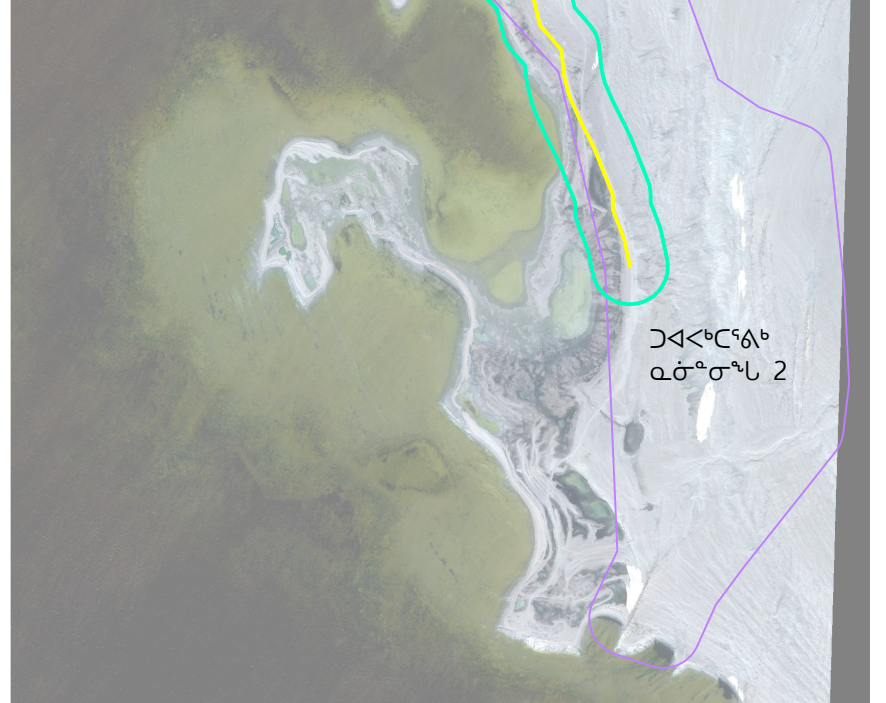
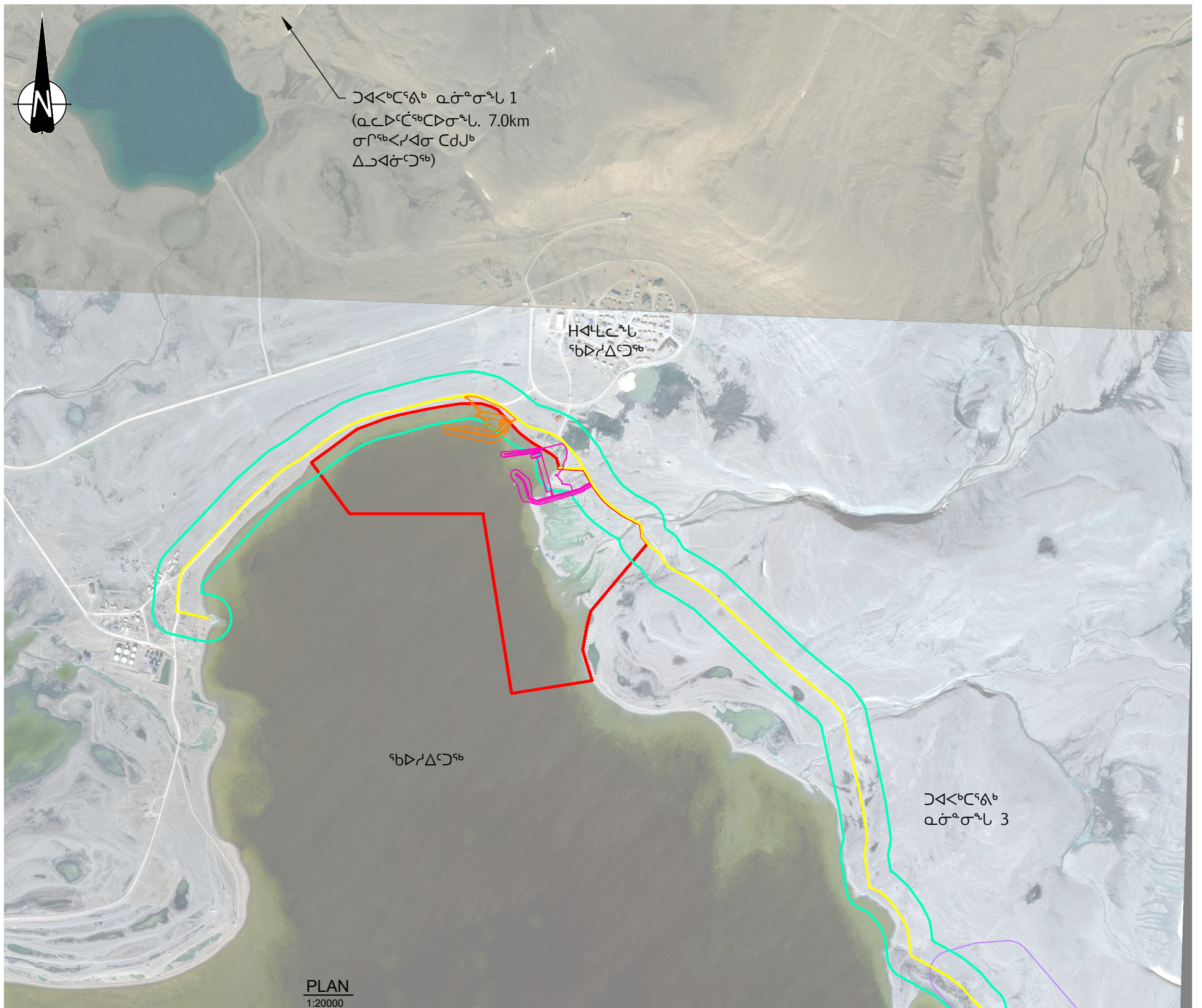
●  $\Delta L^c \cap \Delta L^b \neq \emptyset$

- ፍፅረኛል፡፡ ልዩ ልዩ

- [illegible]

<p style="text-align: center;">ᓄᓇᑭᐱ ᐸᕈᓂᓴ</p> <p style="text-align: center;">ᐋᐅᓯᐃᑦᑐᖅ ᓄᓇᓛᓂ ᐃᔭᖅᏗᔭ ᐱᕙᓛᓛᐋᐢᐣᐤᐃᓴᖅ</p>								
<p style="text-align: center;">ᐱᓛᓚᐊᓴᒃᓴᓴ ᐃᓛᓛᓴᓴ ᐋᓴᓴᓴ ᖅᐅᐃᔭᖅᏗᐃᓴᓴ ᐃᓂᓴᓴ (ᐋᓴᓴᓴᓴᓴᓴ, ᓄᓴᓴᓴᓴᓴᓴ ᐋᓴᓴᓴᓴᓴ, ᓄᓇᓛᓂ ᐃᔭᖅᏗᔭ)</p>								
	Date:	16-MAY-24	Drawn by:	JLC	Edited by:	JLC	App'd by:	VB
			Worley Project Number					
			317086-54170					
			DRG No		<b>Figure 2-1</b>			
						REV		<b>B</b>
<p style="text-align: center;">This drawing is prepared for the use of the contractual customer of Worley Canada Services Ltd. and Worley Canada Services Ltd. assumes no liability to any other party for any representations contained in this drawing.</p>								







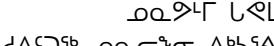

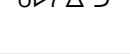
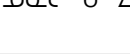
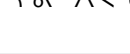





SCH  $\Delta_{\mathcal{O}^{\mathbb{A}}}$   $\mathcal{O}^{\mathbb{C}}$   $\triangleleft \mathcal{D}^{\text{rb}} \mathcal{C} \triangleright \sigma \triangleright \mathcal{L}^{\mathbb{C}}$

$\Delta^a \Delta^b \Delta^c \Delta^d$   $\Delta^a \Delta^b \Delta^c \Delta^d$

ኖልጋኒ፣ልጋ፣ ልፍጊ

	ᄒᄇᆫᆯ ᄇᆫᆫᆫᆫ
	ᄇᆫᆫᆫᆫᆫᆫ ᄇᆫᆫᆫᆫ
	ᄇᆫᆫᆫᆫᆫᆫ

<p style="text-align: center;">  </p>			
<p style="text-align: center;">  </p>			
<p style="text-align: center;">  </p>			
<p style="text-align: center;">  </p>			
<p style="text-align: center;">  </p>			
<p style="text-align: center;">  </p>			
<p style="text-align: center;">  </p>			
<p style="text-align: center;">  </p>			
<p style="text-align: center;">  </p>			
<p style="text-align: center;">  </p>			
<p style="text-align: center;">  </p>			
<p style="text-align: center;">  </p>			
<p style="text-align: center;">  </p>			
<p style="text-align: center;">  </p>			
<p style="text-align: center;">  </p>			
<p style="text-align: center;">  </p>			
<p style="text-align: center;">  </p>			
<p style="text-align: center;">  </p>			
<p style="text-align: center;">  </p>			
<p style="text-align: center;">  </p>			
<p style="text-align: center;">  </p>			
<p style="text-align: center;">  </p>			
<p style="text-align: center;">  </p>			
<p style="text-align: center;">  </p>			
<p style="text-align: center;">  </p>			
<p style="text-align: center;">  </p>			
<p style="text-align: center;">  </p>			
<p style="text-align: center;">  </p>			
<p style="text-align: center;">  </p>			
<p style="text-align: center;">  </p>			
<p style="text-align: center;">  </p>			
<p style="text-align: center;">  </p>			
<p style="text-align: center;">  </p>			
<p style="text-align: center;">  </p>			
<p style="text-align: center;">  </p>			
<p style="text-align: center;">  </p>			
<p style="text-align: center;">  </p>			
<p style="text-align: center;">  </p>			
<p style="text-align: center;">  </p>			
<p style="text-align: center;">  </p>			
<p style="text-align: center;">  </p>			
<p style="text-align: center;">  </p>			
<p style="text-align: center;">  </p>			
<p style="text-align: center;">  </p>			
<p style="text-align: center;">  </p>			
<p style="text-align: center;">  </p>			
<p style="text-align: center;">  </p>			
<p style="text-align: center;">  </p>			
<p style="text-align: center;">  </p>			
<p style="text-align: center;">  </p>			
<p style="text-align: center;">  </p>			
<p style="text-align: center;">  </p>			
<p style="text-align: center;">  </p>			
<p style="text-align: center;">  </p>			
<p style="text-align: center;">  </p>			
<p style="text-align: center;">  </p>			
<p style="text-align: center;">  </p>			
<p style="text-align: center;">  </p>			
<p style="text-align: center;">  </p>			
<p style="text-align: center;">  </p>			
<p style="text-align: center;">  </p>			
<p style="text-align: center;">  </p>			
<p style="text-align: center;">  </p>			
<p style="text-align: center;">  </p>			
<p style="text-align: center;">  </p>			
<p style="text-align: center;">  </p>			
<p style="text-align: center;">  </p>			
<p style="text-align: center;"> </p>			



[illegible]



10



11



## 2.4. ԴԸ ԼԵՆՏԱԿԱՆ ՓԵՐՄԱՆՈՒԹՅԱՆ ԴՆԵՔ

ክልሉን በሥልጣን ማሳደግና ለሥልጣን ማሳደግ የሚያስችሉ ሁኔታዎችን ማፍጠር ይቻላል። ለዚህም ምሳሌ ለሚገኝ የፌዴራል ፖሊስ ሰራተኛ ሰነድ ማሰባሰቢያ ማድረግና ለሥልጣን ማሳደግ የሚያስችሉ ሁኔታዎችን ማፍጠር ይቻላል።

### 2.4.1. ርኪጋፍ ሥርፍ ነፅጋዲኖፍ

ርሲፖርት ሥራ ማጠቃለያና ማጠቃለያ ለጥራት ማረጋገጫ ማጠቃለያ፡

- $\Delta^{\mathfrak{b}}\Delta^{\mathfrak{c}} \triangleleft \Delta^{\mathfrak{b}}\Delta^{\mathfrak{c}} \leq \Delta^{\mathfrak{b}}\Delta^{\mathfrak{c}}$ .
- $\Delta^{\mathfrak{b}}\Delta^{\mathfrak{c}} \leq \Delta^{\mathfrak{b}}\Delta^{\mathfrak{c}}$ .
- $\Delta^{\mathfrak{b}}\Delta^{\mathfrak{c}} \leq \Delta^{\mathfrak{b}}\Delta^{\mathfrak{c}}$ .
- $\Delta^{\mathfrak{b}}\Delta^{\mathfrak{c}}$ .

#### 2.4.1.1 $\Delta^{\text{fb}} \rightarrow \Delta^{\text{c}}$ $\triangleleft$ $\Delta^{\text{fb}} \rightarrow \Delta^{\text{c}}$ $\alpha_{\Delta^{\text{fb}} \rightarrow \Delta^{\text{c}}}$

[illegible]

#### 2.4.1.1.1 $\Delta^C \supseteq b$

[illegible][illegible]

#### 2.4.1.1.2 ၵᄃᄃᄃᄃᄃᄃ

[illegible]



[illegible]

#### 2.4.1.2 የዋና ንግድ ስራ

[illegible][illegible]

### 2.4.1.3 ΔL<sup>9</sup>Γ▷C<sub>9</sub>ζ<sup>9</sup>

[illegible]

#### 2.4.1.4 $\Delta L \triangleright^< \wedge \triangleright \sigma^a \mathcal{L}^a \sigma^c$

[illegible][illegible][illegible]



3.0 NTU -6 m-Γ ΔΠσርጊ. ስዳሚስ (pH) ርለልመር፤ኔ ልምደሙ ላፒፓ ለረቢማደሙ  
7.9-ፓ 8.3-ፓ ላዕመሲራሮሮኔፓኔ ላፓሙ ላሁሶፓፓ ስዳሚስሮሮኔፓኔ (pH) -25 m-Γ  
ΔΠσርጊ ልፒፑ ነፃሲፓ በየፓፓ. ሥፅዳሚስ ላሁሶፓፓልፒሮሮኔፓኔ ርለልመር፤ኔ ልምደሙ ላፒፓ  
ለረቢማደሙ.

#### 2.4.1.5 ביטחון

[illegible]

#### 2.4.2. ወደ ልዩነትና ልዩነት ስርዓት ማሳተፍ

[illegible][illegible][illegible]

### 2.4.3. ወርሃዊ ምርጫ

[illegible]

ᐱᓐᓇᓂᓂᓐ ᓂᐅᓂᓐᓂᓐ ᓂᐅᓂᓐᓂᓐ ᐅᓂᓂᓐᓂᓐ ᐅᓂᓂᓐᓂᓐ.



[illegible][illegible][illegible][illegible]

2.4.5. **ወደጃብረቢረሰናጋሪ ሳይረገጥናጋሪ ሳይገባ**

[illegible][illegible][illegible][illegible]

[illegible]

2.5.  $\Delta\phi\Delta^c$  ንፕላንክ ምዕራፍ ጋኒራሎስክ

[illegible][illegible][illegible][illegible]

፲፱ ወለድ ጥቅም ላይ የዋለው ወጪ ለግል ሥራ ለማድረግ ለተጠቀመ በሆኑ ሰዎች ላይ ለመጣጥፍ ይቻላል፡፡

- [illegible]



[illegible][illegible][illegible]

3. 2025-Г ҮЛГ АСНД<sup>9</sup>ҮЛ<sup>10</sup>

[illegible]

4.  $\Delta^b \subset \Delta^c$  ለሆነ ሁሉም  $\Delta^b$  ለ  $\Delta^c$  ሲካተት

[illegible]

*[Handwritten signature]*

$$\Delta^b \dot{\mathcal{Z}}_n \triangleleft \dot{\mathcal{Z}}_{C^c-d^c}$$

Dynamic Ocean Consulting Ltd.

( $C\Delta \dot{\Gamma}^b$   $\triangleright \gamma^a$   $b^a \dot{\Gamma}^c$   $c\Gamma^n$ )

 $\Delta^{\epsilon} d^L \leq \epsilon \rho^L L \rho^b$