

▷ᑭᓕ▷ᑎᓕ: 8673910285, ᐱᑲᔪᑦᑯᓕ:

ኖፌልጋጋቦሽ ለጥራጥፊና፡ጥራጥፊ፡ጥራጥፊ

Inuinnaqtun: Ukautait: Polar Knowledge Canadaami ovalo Avatiligiyit Hilat Aalangayulikiyit Kanatami uktumayut ililutik kungiagutikhainik halumaituligutainik (PM 2.5, PM 10 ovalo Puyuut) Ikaluktutiami, Nunavut. Halumailigutit pilaaktut amigaitunit nunalaani, ilauyut apkotini hiugaliat, ikualaaktut ukhukyuat ovalo ikualaaktut kuviit. Halumaituligutit ilauyut puyuut ihumaalugilikitait ilaa, ilaulaamata anialilaagutainut ovalo hilat aalangugutait. Huliniaiktut: Hulinahuaktut hamani hanayakhait kangikhinahualugit kanugitaakhaat ovalo nakitlu halumailigutit ovalo puyuut Ikaluktutiami, Nunavut. Hamna tuhagutikhait ikayuniaktut ikayugiaganik hapkoa kanugitaakhaat ilauyunit Inunut aniaktitailigiyiit ovalo hanalutik aalanut ihuakhilaagutainik puyuunit. Havaniaaktait: Hanayakhait ilauniaktut ililutik mikiyunik kimilguugutainik Ikaluktutiami. Qulliq Kuliligiyyit Kuapurisitkut ikayuniaktut ilitigutainik kimilguugutait kaangani apkotini kuliit ovalo unguvklugit inikata hanayakhait. Kimilguutit iliyauniaktut Ilihakvim kungiagiaganik kanugitaakhaat iluani anikhaagautit. Ubluunik: Hamna hivulik hanayakhait uktuniaktut pingahunik ukiumik (2024mit – 2027mut). Ilauniaktut mikinikhaanut malguunik ukiumik katitigutait ukiumik (2024mit-2026mut) ovalo atauhik ukiumik kimilguugutainik katitigutait ovalo hanalutik tunilaaktainik. Iniktigutait: Inikata hanayakhait, havakatigiiktut hananiaktut tuhaktitakhainik nanihimayainik, ilauyut aalangugutainut ihuakhilaaktait puyuut ovalo aktugutait. Hapkoa nanihimayait tuniyauniaktut nunakatigiiktunut ayoikhaitilutik katimayut nani ukakatiginiaktait iniktigutainik, aipaanutlu piniaktait ovalo ihuakhaitilutik naunaiautainik. Katitikhimayut pihimayut hanayakhait tuniyauniaktut, ilaukatigiyaanganik Hamletkunut Ikaluktutiami ikayugiaganik kanuk pilaaktait puyuut ihuakhilaagutainik naunaiautait. Ovalutauk, havakatigiiktut havaniaktut Ilihakvimi pipkaiaanganik ilihaktut takuyaanganik kanugitaakhaat halumailigutit katitilikpaktut ilihakvimi ovalo aalatkiinit ilihimayait Ikaluktutiami. Pigumik hamna hanayakhait nakuugumik Ikaluktutiami, hanayakhait aatjikutiliuniaktait/atuliklugit aalani Ukiuktaktumi nunalaat uktugumayunut. Ikpinagutait: Naniiniagutait hanayakhait iluani aktuktauhimaitumi (iluani Ikaluktutiaik), nipikangitut ovalo mikiyut hanalgutit (haniani Ikaluktutiami), nipikangitut ovalo mikiyut (angitjutait 1litre hikulautait) ovalo aktuktaulaitjutainik hanalgutikhait kaangani kuliit, ikpinaktilaitut avatiligiyinut, hugaanut ovaluniit Inunut.

Operations Phase: from 2024-08-30 to 2027-08-30

Λ Γ Δ Ε Ζ Η Θ Ι Κ Λ Μ Ν Ξ Ο Π Ρ Σ Τ Υ Φ Χ Ψ Ω

ᑭᓚ	ᖃᓄᐱᑐᒥᑦ ᐱᑕᓚᐳᖅ ᑭᓂᐳᖅ	ᑯᔪᑦ ᓄᓇᑲᑏᑦ	ᑕᓴᑉᐸᓗᑦ ᓄᓇᐳᑦ ᖃᓄᖅ ᐳᑕᓚᑈᑌᑎᓗᑦ ᑆᓚᓗᑦ ᑭᓂᑎᓗᑦ	ᐱᑕᓴᑭᑕᖅ ᐱᑉᐳᑌᑎᓗᑦ ᐳᓄᓗᑦ ᓇᓶᖅ ᑕᑎᓗᖅ ᑕᑦᑭᑎᓗᑦ ᑕᐱᑦ ᑆᓚᑎᓗᑦ ᖁᓗᑦ ᑕᓗᖅ	ᖃᓂᓗᑎᓗᑦ ᓄᓇᑕᓴᑎᓗᑦ ᐳᓄᓗᑦ ᓴᑵᓴᓴᑎᓗᑦ ᐱᑉᐳᑌᑎᓗᑦ ᓆᓄᑦ
Air quality monitors within the boundary of Cambridge Bay	Scientific/International Polar Year Research	Commissioners	Within municipal limits of Cambridge Bay	N/A - will be installed in pre-disturbed area on buildings and light posts	Within Cambridge Bay

[illegible]

ᐃᓇᓕᓯᓕᓐ	ᐱᓂᓐ	ᐅᐱᓐᐱᓐᐱᓐᐱᓐᐱᓐ	ᓐᓂᓂᓐ ᐱᓐᐱᓐᐱᓐᐱᓐᐱᓐᐱᓐᐱᓐ
ᐱᓐᐱᓐᐱᓐᐱᓐᐱᓐ	Angela Gerbrandt	Cambridge Bay Hamlet	2024-06-06

$\triangle^b C d^c$
$$\Delta^b C d r n \sigma \Delta^c \sigma^c$$

<p>ለርቢረቢኒኮቪች</p> <p>ለርቢረቢኒኮቪች</p>	<p>ፍጹም ምርት</p>	<p>ፍጹም ምርት</p> <p>ከፍተኛ ምርት</p>	<p>ፍጹም ምርት</p> <p>ፍጹም ምርት</p>	<p>ከፍተኛ ምርት</p>
Information is not available				

$\triangleleft \nabla \Gamma \triangleright C^{\circ} \supset C^{\circ} \quad \triangleleft^b \supset^{\circ b} C \triangleright \Gamma L \vee^{\circ}$

Potential environmental impacts are very low as the monitors are small (approximately the size of a nalgene water bottle), do not emit sound, and will be placed out of reach on light posts and buildings. The monitors are also being placed within the community in pre-disturbed areas. Potential for positive impacts on air quality, community wellness and human health as the results workshop from this project will discuss with community members, KIA and the Hamlet about current air quality and mitigation measures to improve air quality in the community.

Additional Information

SECTION A1: Project Info

SECTION A2: Allweather Road

SECTION A3: Winter Road

SECTION B1: Project Info

SECTION B2: Exploration Activity

SECTION B3: Geosciences

SECTION B4: Drilling

SECTION B5: Stripping

SECTION B6: Underground Activity

SECTION B7: Waste Rock

SECTION B8: Stockpiles

SECTION B9: Mine Development

SECTION B10: Geology

SECTION B11: Mine

SECTION B12: Mill

SECTION C1: Pits

SECTION D1: Facility

SECTION D2: Facility Construction

SECTION D3: Facility Operation

SECTION D4: Vessel Use

SECTION E1: Offshore Survey

SECTION E2: Nearshore Survey

SECTION E3: Vessel Use

SECTION F1: Site Cleanup

SECTION G1: Well Authorization

SECTION G2: Onland Exploration

SECTION G3: Offshore Exploration

SECTION G4: Rig

SECTION H1: Vessel Use

SECTION H2: Disposal At Sea

SECTION I1: Municipal Development

[illegible]

Pre-disturbed area

[illegible][illegible]

This project is in response to community concerns with air pollution from dust and burning of the dump. The air quality monitors will help measure impacts from these activities and will aid in determining mitigation measures.

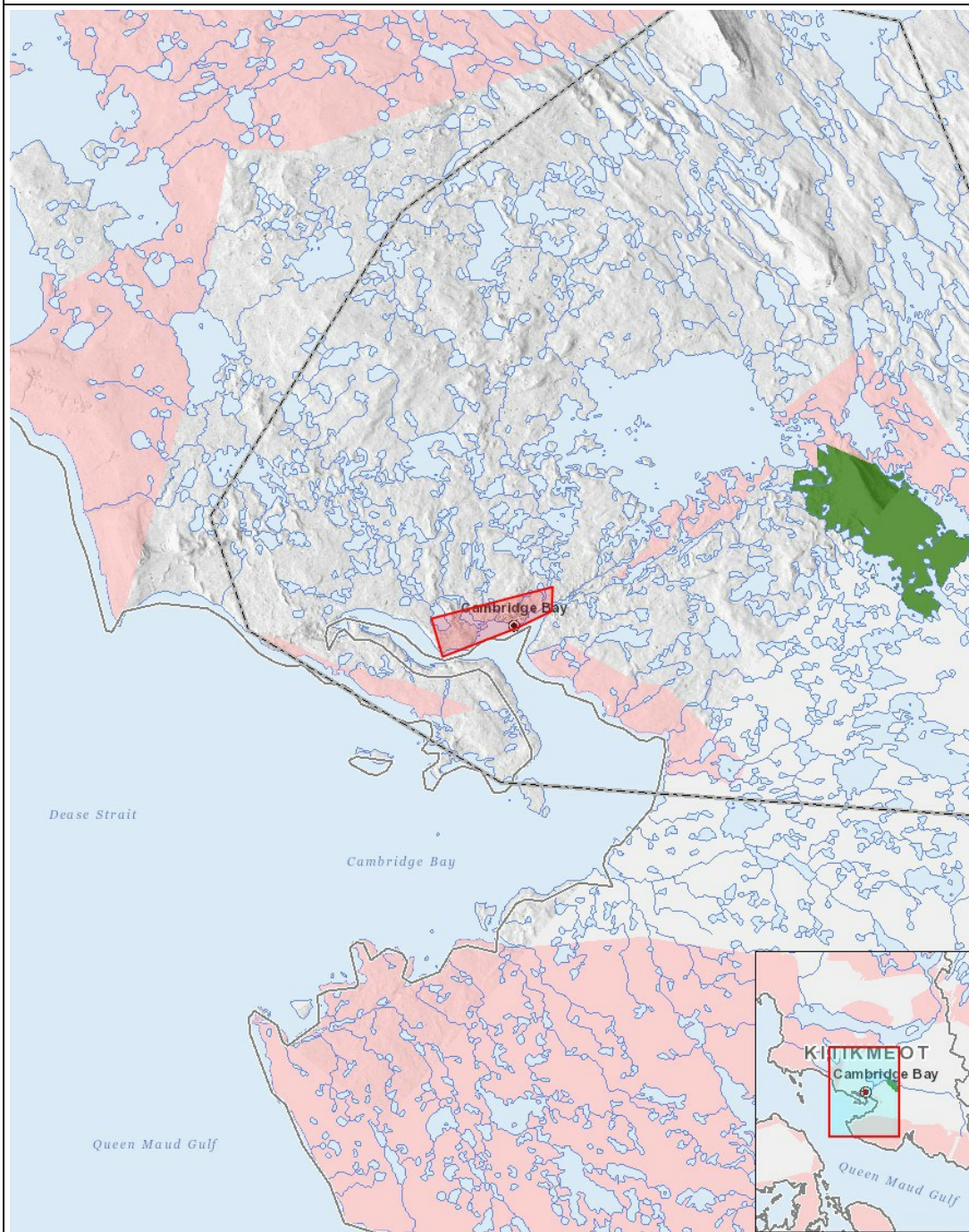
Miscellaneous Project Information

ᐃᓇᑦ ᐅᓂᓴᓯᑦ ᐱᓄᑦ ᐅᓲᒪᓴᑦ ᑭᓂᐱᑦᑐᓂᓴᓯᑦ ᐸᓲᓳᓴᓴᓴᑦ ᐅᓂᐱᓴᓂᓴᓯᑦ

Cumulative Effects

Impacts

[illegible][illegible][illegible]



List of Project Geometries

1	polygon	Air quality monitors within the boundary of Cambridge Bay
---	---------	---