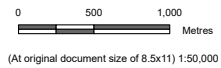


- Notes**
1. Coordinate System: WGS 1984 UTM Zone 12N
  2. Data Sources: Governments of Nunavut and Canada, Stantec, EDI
  3. Service Layer Credits: World Imagery: Vantor

**Landcover Class**

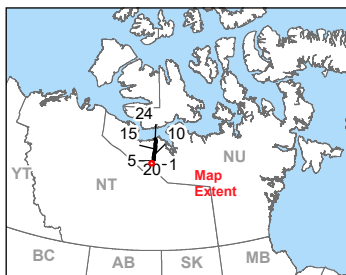
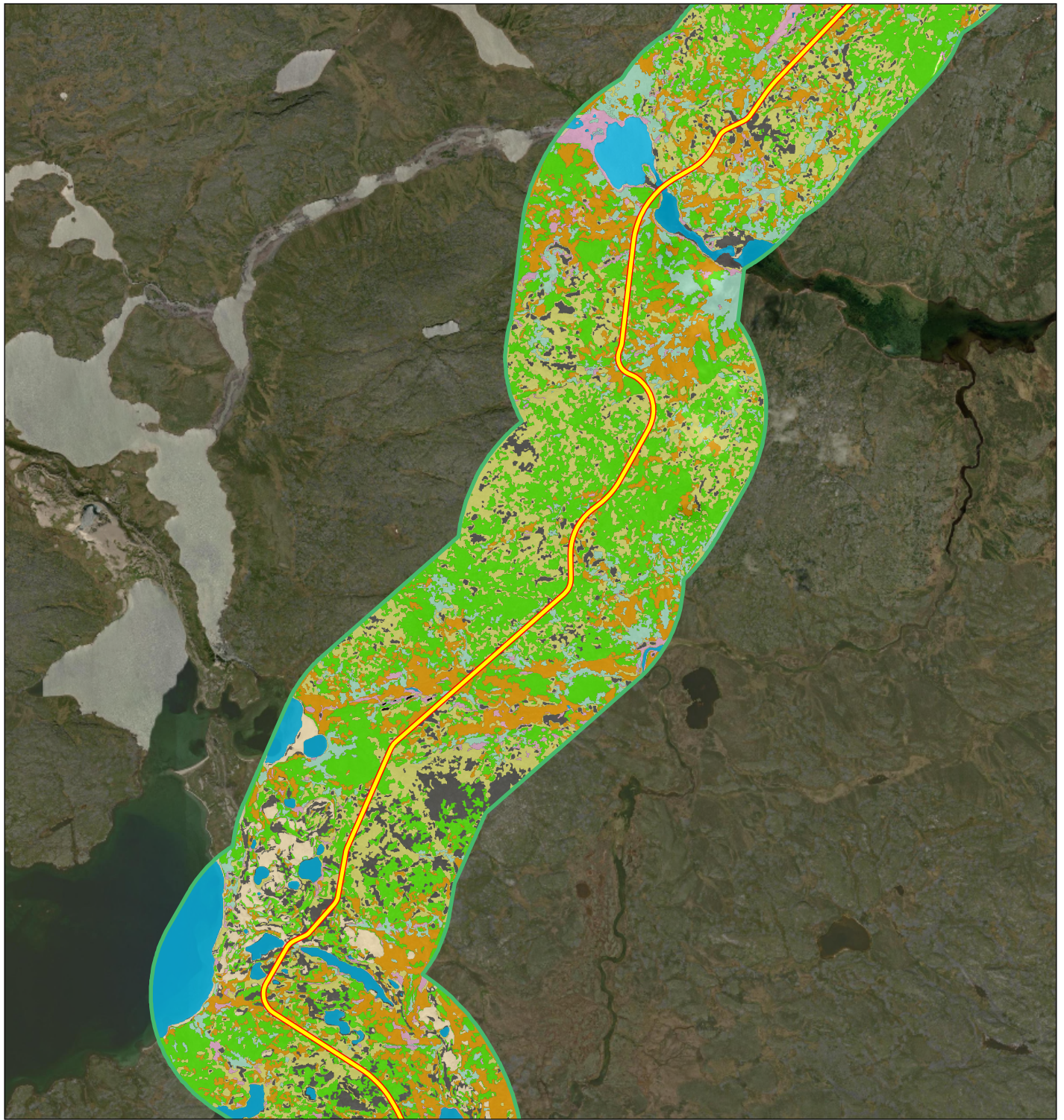
- |                                     |  |
|-------------------------------------|--|
| Boulder / Bedrock                   | Tall Shrub                               |
| Unvegetated Exposed Gravel / Cobble | Tussock Sedge                            |
| Exposed Silt Sand                   | Water                                    |
| Heath Crypturbated                  | Grays Bay Road                           |
| Heath Graminoid                     | Grays Bay Winter Road                    |
| Heath Bedrock / Boulder             | Grays Bay Winter Road Optional Alignment |
| Heath Tundra                        | Local Assessment Area (LAA)              |
| Low Shrub                           | <b>Project Development Area (PDA)</b>    |
| Mine Sites                          | Jericho Station                          |
| Non-Tussock Sedge                   | Tibbitt to Contwoyto Winter Road         |
| Shadow                              |  |



Project Location: Kitikmeot Region, Nunavut  
 Client/Project: West Kitikmeot Resources Corp, Grays Bay Road and Port

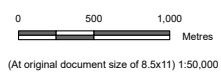
Figure No. **A.2**

**Landcover Classification within the Local Assessment Area**



**Landcover Class**

- Boulder / Bedrock
- Unvegetated Exposed Gravel / Cobble
- Exposed Silt Sand
- Heath Crypturbated
- Heath Graminoid
- Heath Bedrock / Boulder
- Heath Tundra
- Low Shrub
- Mine Sites
- Non-Tussock Sedge
- Shadow
- Tall Shrub
- Tussock Sedge
- Water
- Grays Bay Road
- Local Assessment Area (LAA)
- Tibbitt to Contwoyto Winter Road

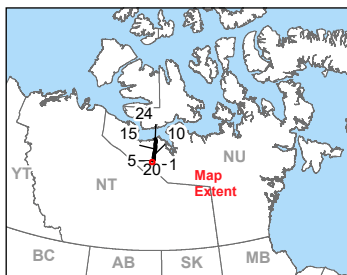
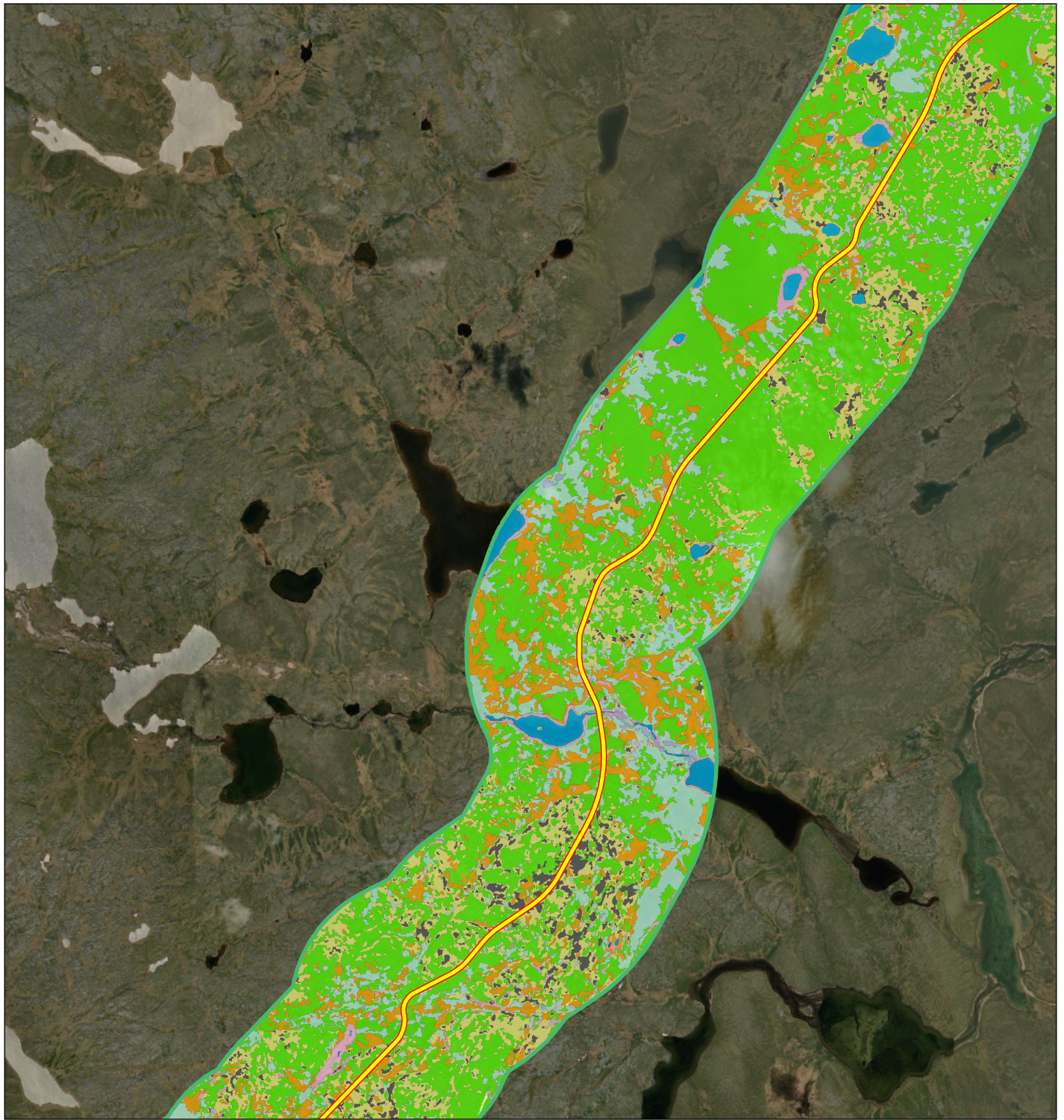


**Notes**  
 1. Coordinate System: WGS 1984 UTM Zone 12N  
 2. Data Sources: Governments of Nunavut and Canada, Stantec, EDI  
 3. Service Layer Credits: World Imagery: Earthstar Geographics

Project Location: Kitikmeot Region, Nunavut  
 Client/Project: West Kitikmeot Resources Corp  
 Grays Bay Road and Port

Figure No.: **A.2**  
 Title: **Landcover Classification within the Local Assessment Area**

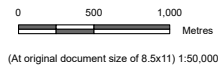
**Landcover Classification within the Local Assessment Area**



- Notes**
1. Coordinate System: WGS 1984 UTM Zone 12N
  2. Data Sources: Governments of Nunavut and Canada, Stantec, EDI
  3. Service Layer Credits: World Imagery: Vantor

**Landcover Class**

- Boulder / Bedrock
- Unvegetated Exposed Gravel / Cobble
- Exposed Silt Sand
- Heath Crypturbated
- Heath Graminoid
- Heath Bedrock / Boulder
- Heath Tundra
- Low Shrub
- Mine Sites
- Non-Tussock Sedge
- Shadow
- Tall Shrub
- Tussock Sedge
- Water
- Grays Bay Road
- Local Assessment Area (LAA)
- Tibbitt to Contwoyto Winter Road



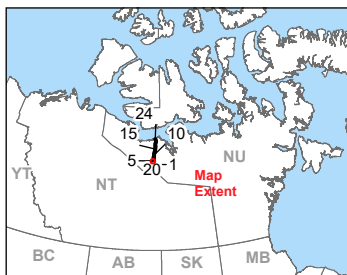
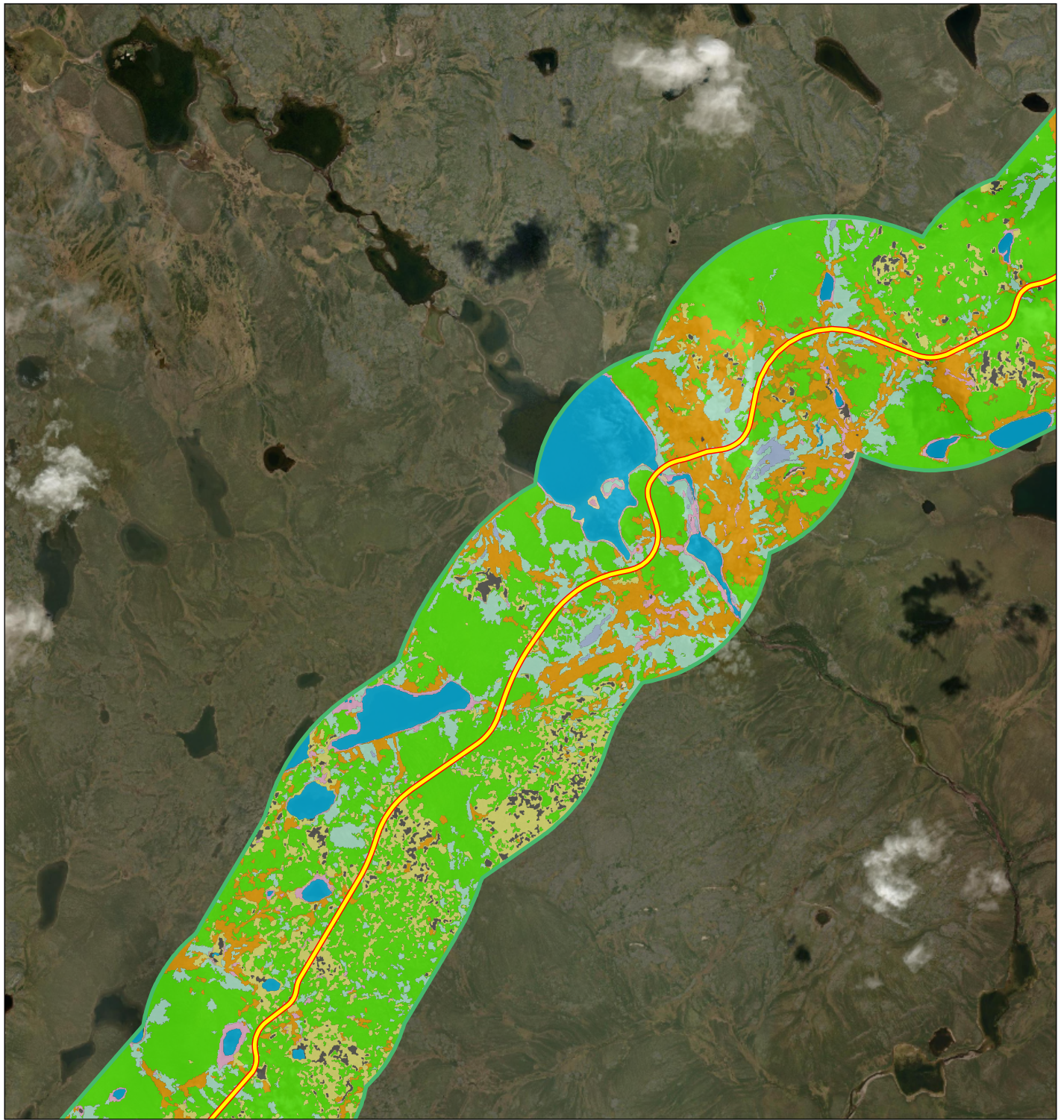
Project Location: Kitikmeot Region, Nunavut  
 Client/Project: West Kitikmeot Resources Corp, Grays Bay Road and Port

Figure No.: **A.2**

**Landcover Classification within the Local Assessment Area**

Y:\02002\epd\05\geomat\Client\Nunavut\_Stantec\GIS\BPOF\Parent\123514888\_089\_Vegetation\_EIS\_LAA.mxd - Revised: 2026-02-03 By: doory

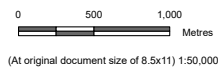
Disclaimer: This document has been prepared based on information provided by others as cited in the Notes section. Stantec has not verified the accuracy and/or completeness of this information and shall not be responsible for any errors or omissions which may be incorporated herein as a result. Stantec assumes no responsibility for data supplied in electronic format, and the recipient accepts full responsibility for verifying the accuracy and completeness of the data.



- Notes**
1. Coordinate System: WGS 1984 UTM Zone 12N
  2. Data Sources: Governments of Nunavut and Canada, Stantec, EDI
  3. Service Layer Credits: World Imagery: Vantor

**Landcover Class**

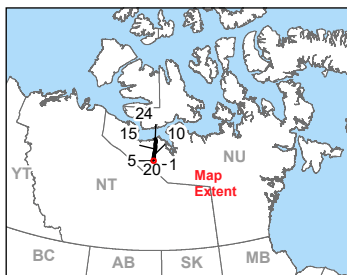
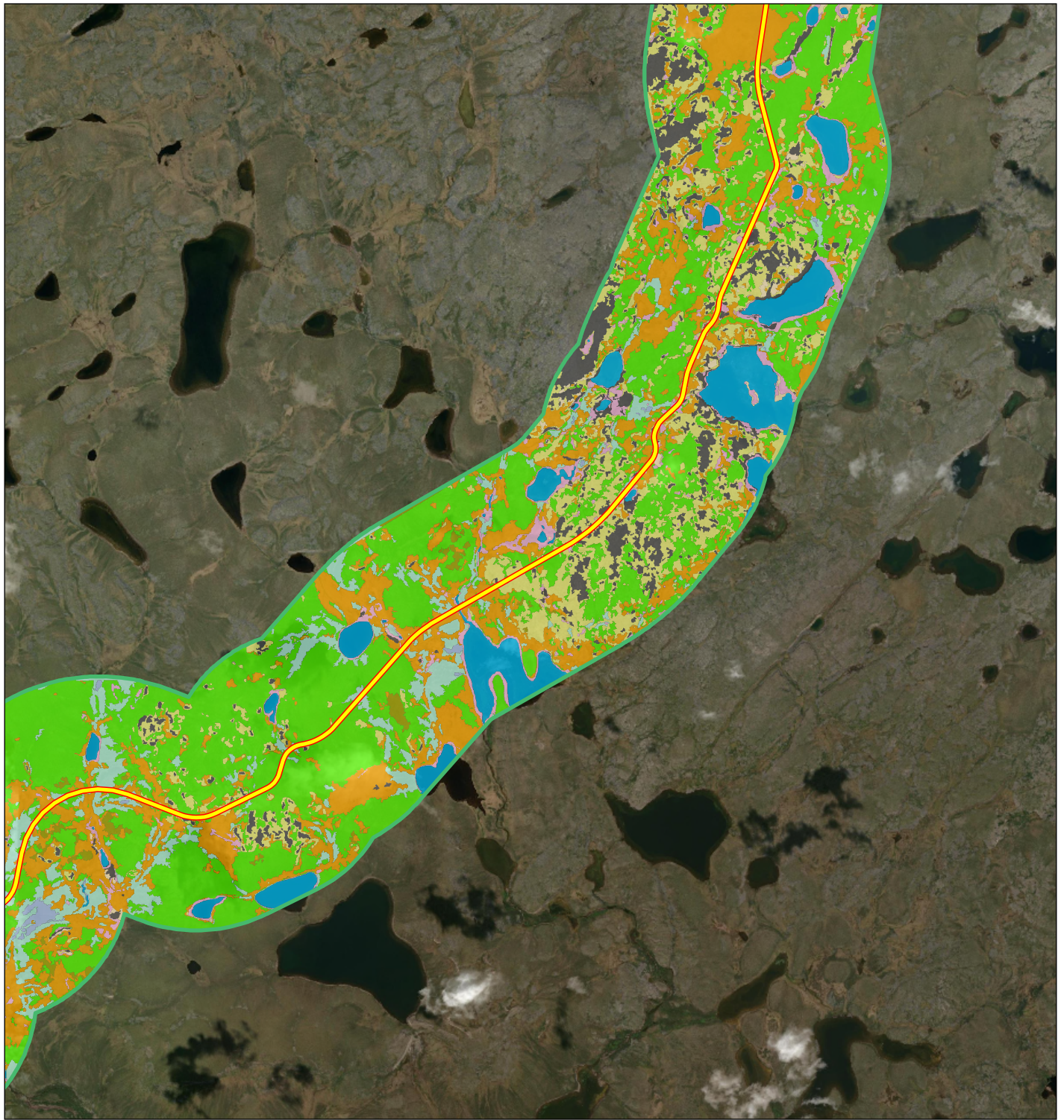
- |                                     |                                  |
|-------------------------------------|----------------------------------|
| Boulder / Bedrock                   | Tall Shrub                       |
| Unvegetated Exposed Gravel / Cobble | Tussock Sedge                    |
| Exposed Silt Sand                   | Water                            |
| Heath Crypturbated                  | Grays Bay Road                   |
| Heath Graminoid                     | Local Assessment Area (LAA)      |
| Heath Bedrock / Boulder             | Tibbitt to Contwoyto Winter Road |
| Heath Tundra                        |                                  |
| Low Shrub                           |                                  |
| Mine Sites                          |                                  |
| Non-Tussock Sedge                   |                                  |
| Shadow                              |                                  |



Project Location: Kitikmeot Region, Nunavut  
 Client/Project: West Kitikmeot Resources Corp, Grays Bay Road and Port  
 Prepared by DSP/RY on 2026-02-03  
 TR by SL on 2026-02-03  
 123514888\_089

Figure No. **A.2**

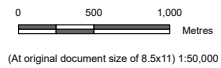
**Landcover Classification within the Local Assessment Area**



**Notes**  
 1. Coordinate System: WGS 1984 UTM Zone 12N  
 2. Data Sources: Governments of Nunavut and Canada, Stantec, EDI  
 3. Service Layer Credits: World Imagery: Earthstar Geographics

**Landcover Class**

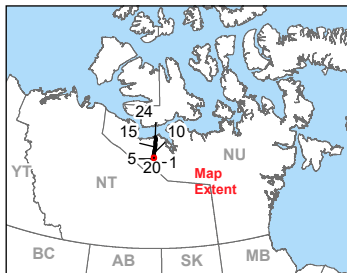
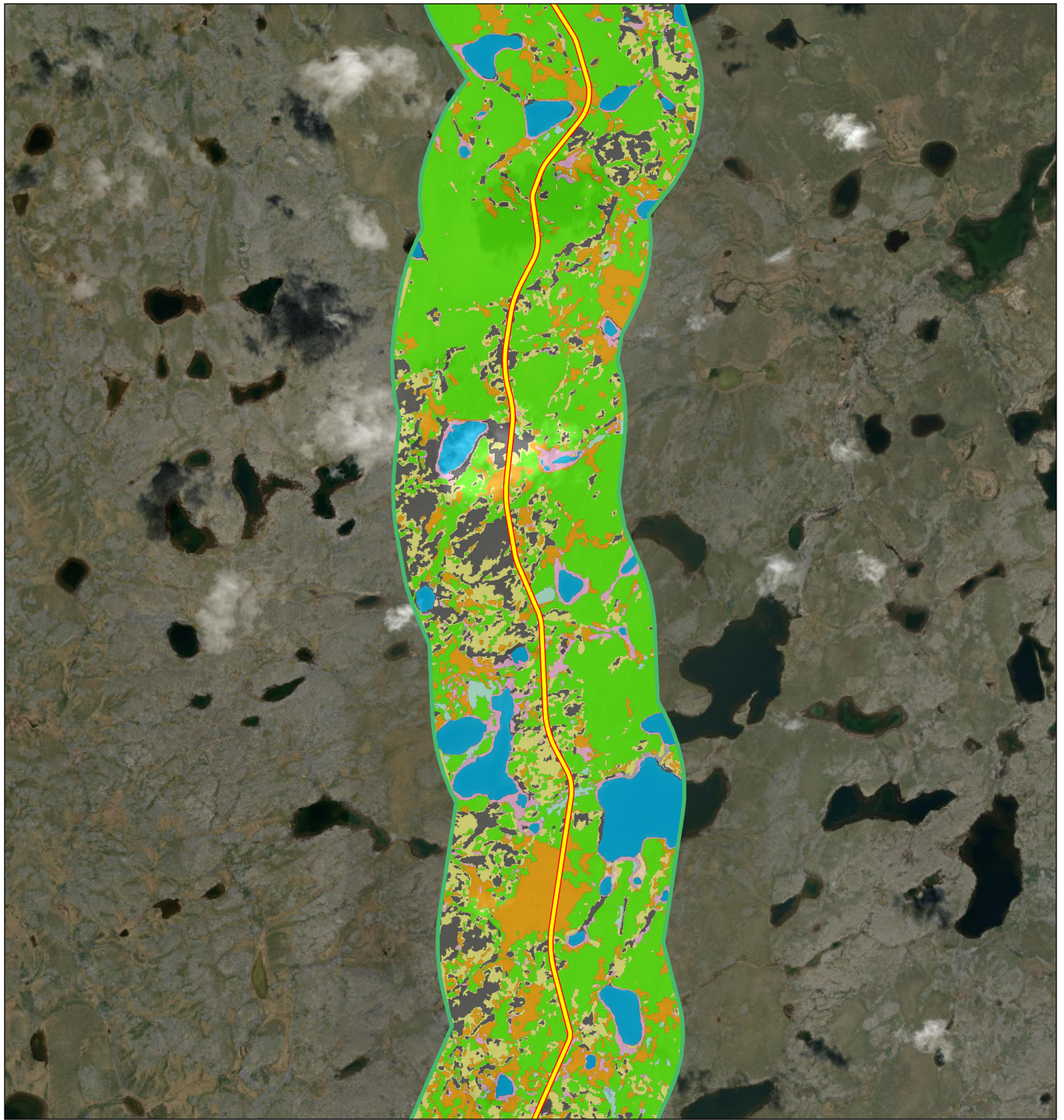
- Boulder / Bedrock
- Unvegetated Exposed Gravel / Cobble
- Exposed Silt Sand
- Heath Cryoturbated
- Heath Graminoid
- Heath Bedrock / Boulder
- Heath Tundra
- Low Shrub
- Mine Sites
- Non-Tussock Sedge
- Shadow
- Tall Shrub
- Tussock Sedge
- Water
- Grays Bay Road
- Local Assessment Area (LAA)
- Tibbitt to Contwoyto Winter Road



Project Location: Kitikmeot Region, Nunavut  
 Client/Project: West Kitikmeot Resources Corp, Grays Bay Road and Port  
 Prepared by DSPRY on 2026-02-03  
 TR by SL on 2026-02-03  
 123514888\_089

Figure No. **A.2**

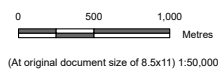
**Landcover Classification within the Local Assessment Area**



**Notes**  
 1. Coordinate System: WGS 1984 UTM Zone 12N  
 2. Data Sources: Governments of Nunavut and Canada, Stantec, EDI  
 3. Service Layer Credits: World Imagery: Earthstar Geographics

**Landcover Class**

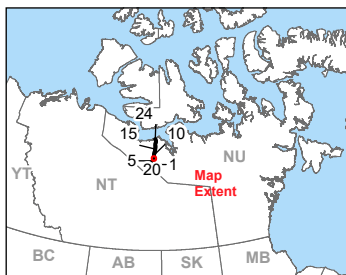
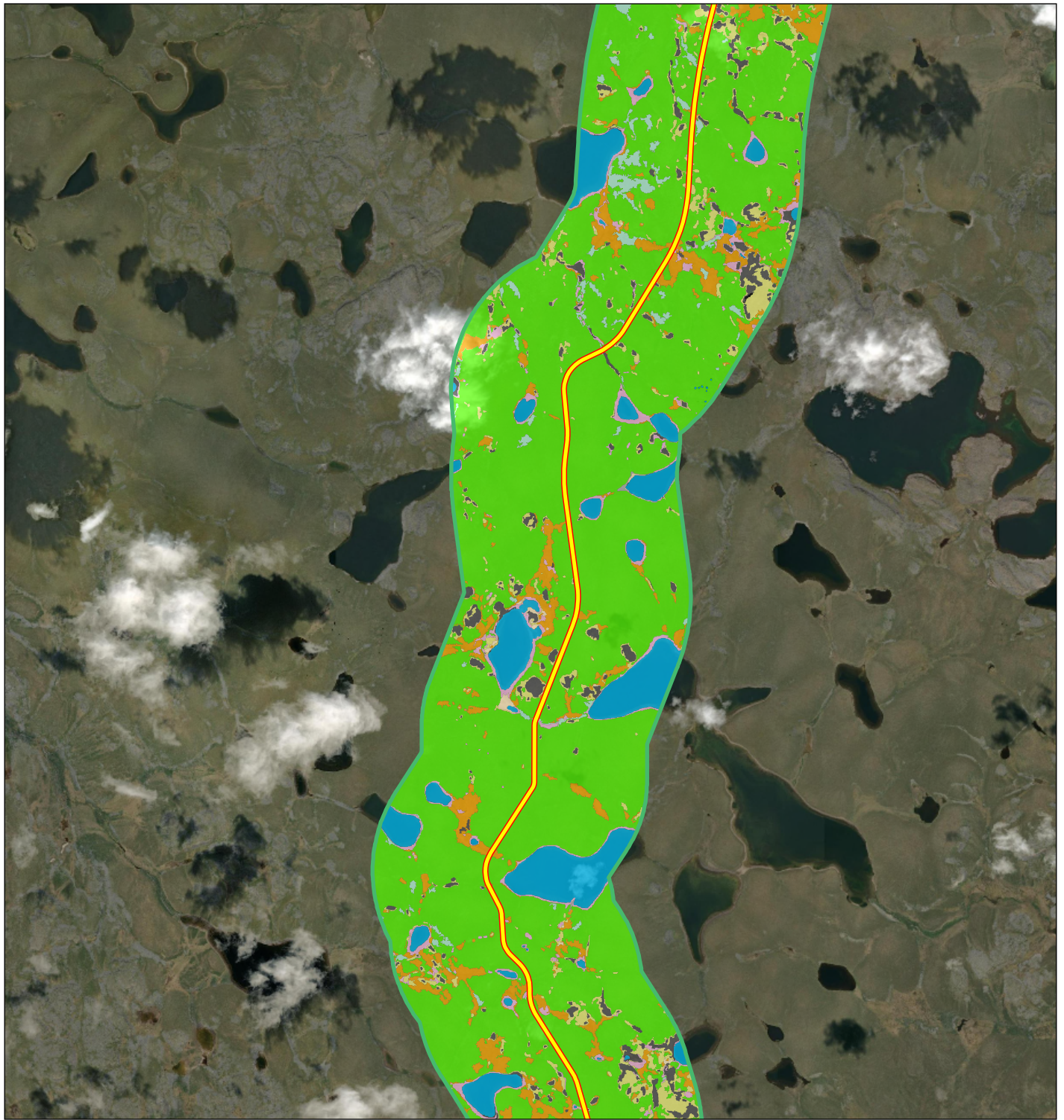
- Boulder / Bedrock
- Unvegetated Exposed Gravel / Cobble
- Exposed Silt Sand
- Heath Crypturbated
- Heath Graminoid
- Heath Bedrock / Boulder
- Heath Tundra
- Low Shrub
- Mine Sites
- Non-Tussock Sedge
- Shadow
- Tall Shrub
- Tussock Sedge
- Water
- Grays Bay Road
- Local Assessment Area (LAA)
- Tibbitt to Contwoyto Winter Road



Project Location: Kikmeot Region, Nunavut  
 Client/Project: West Kitikmeot Resources Corp  
 Grays Bay Road and Port

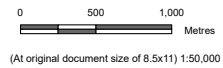
Figure No.: **A.2**

**Landcover Classification within the Local Assessment Area**



**Landcover Class**

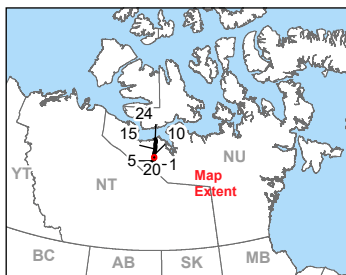
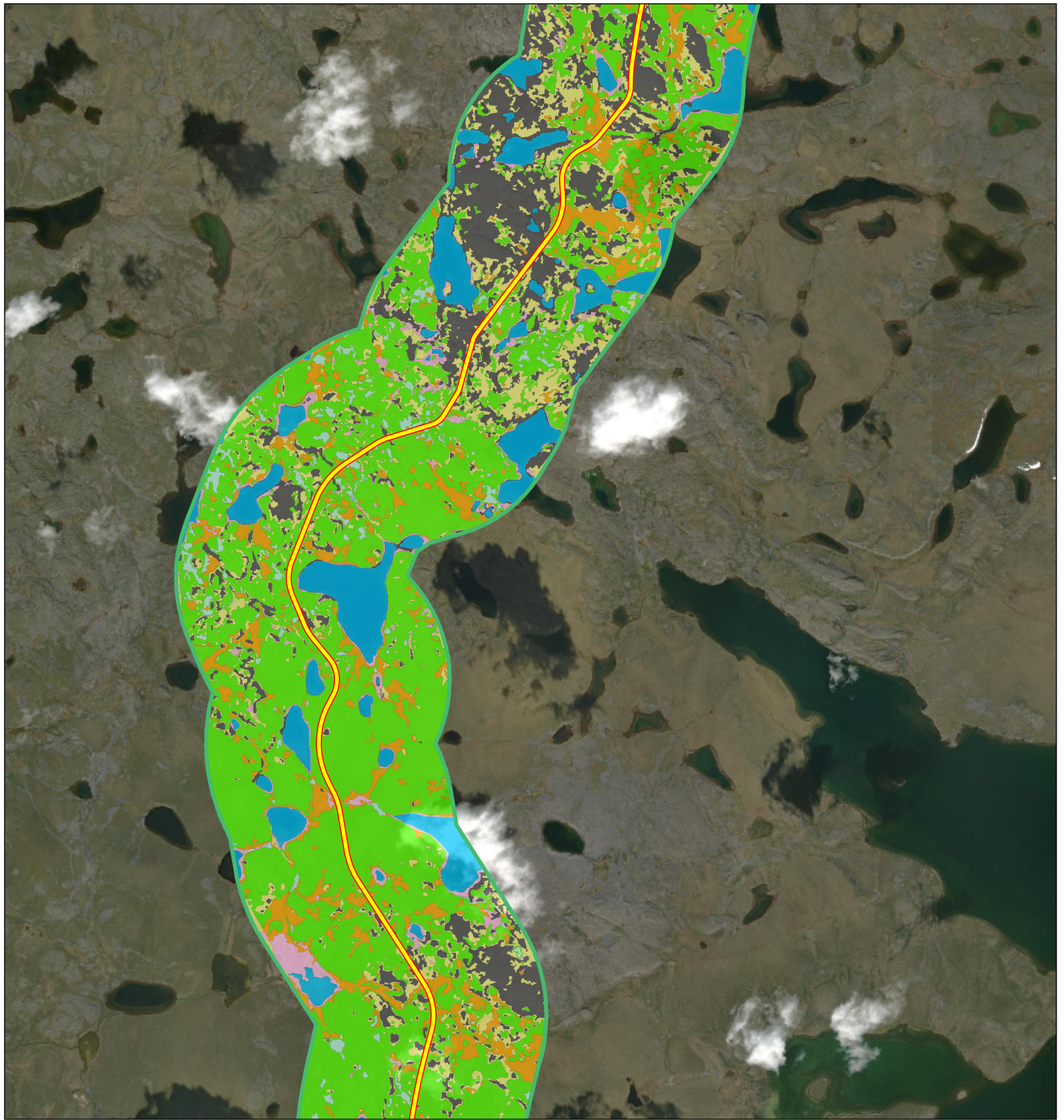
- Boulder / Bedrock
- Unvegetated Exposed Gravel / Cobble
- Exposed Silt Sand
- Heath Crypturbated
- Heath Graminoid
- Heath Bedrock / Boulder
- Heath Tundra
- Low Shrub
- Mine Sites
- Non-Tussock Sedge
- Shadow
- Tall Shrub
- Tussock Sedge
- Water
- Grays Bay Road
- Local Assessment Area (LAA)
- Tibbitt to Contwoyto Winter Road



Project Location: Kitikmeot Region, Nunavut  
 Client/Project: West Kitikmeot Resources Corp  
 Grays Bay Road and Port

Figure No.: **A.2**

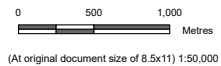
**Landcover Classification within the Local Assessment Area**



**Notes**  
 1. Coordinate System: WGS 1984 UTM Zone 12N  
 2. Data Sources: Governments of Nunavut and Canada, Stantec, EDI  
 3. Service Layer Credits: World Imagery: Earthstar Geographics

**Landcover Class**

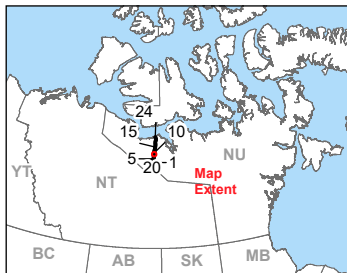
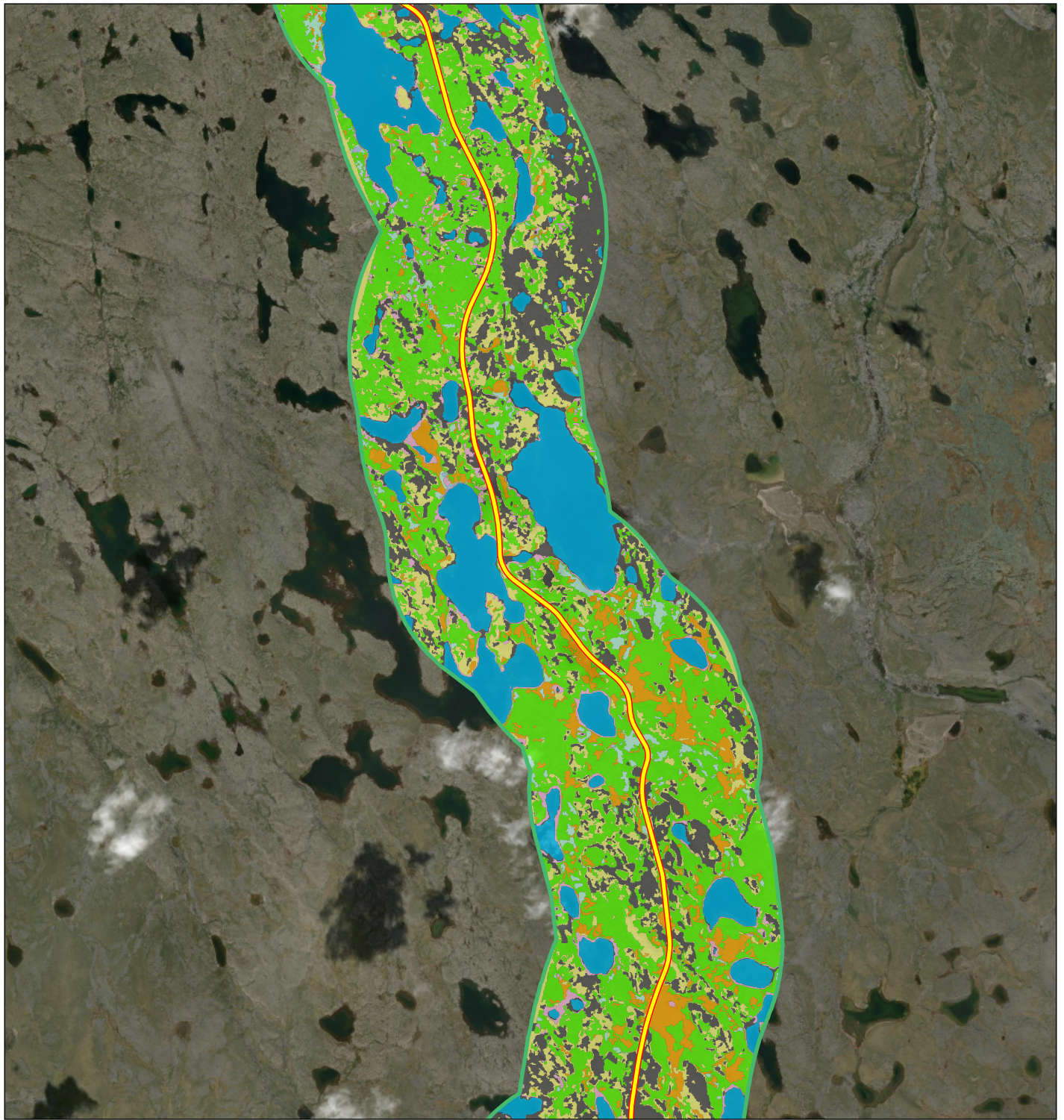
- Boulder / Bedrock
- Unvegetated Exposed Gravel / Cobble
- Exposed Silt Sand
- Heath Crypturbated
- Heath Graminoid
- Heath Bedrock / Boulder
- Heath Tundra
- Low Shrub
- Mine Sites
- Non-Tussock Sedge
- Shadow
- Tall Shrub
- Tussock Sedge
- Water
- Grays Bay Road
- Local Assessment Area (LAA)
- Tibbitt to Contwoyto Winter Road



Project Location: Kikmeot Region, Nunavut  
 Client/Project: West Kitikmeot Resources Corp  
 Grays Bay Road and Port

Figure No.: **A.2**

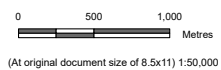
**Landcover Classification within the Local Assessment Area**



**Notes**  
 1. Coordinate System: WGS 1984 UTM Zone 12N  
 2. Data Sources: Governments of Nunavut and Canada, Stantec, EDI  
 3. Service Layer Credits: World Imagery: Earthstar Geographics

**Landcover Class**

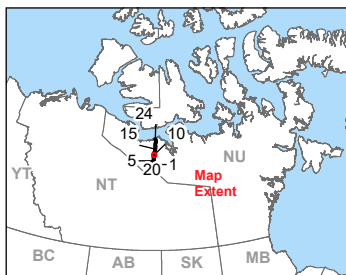
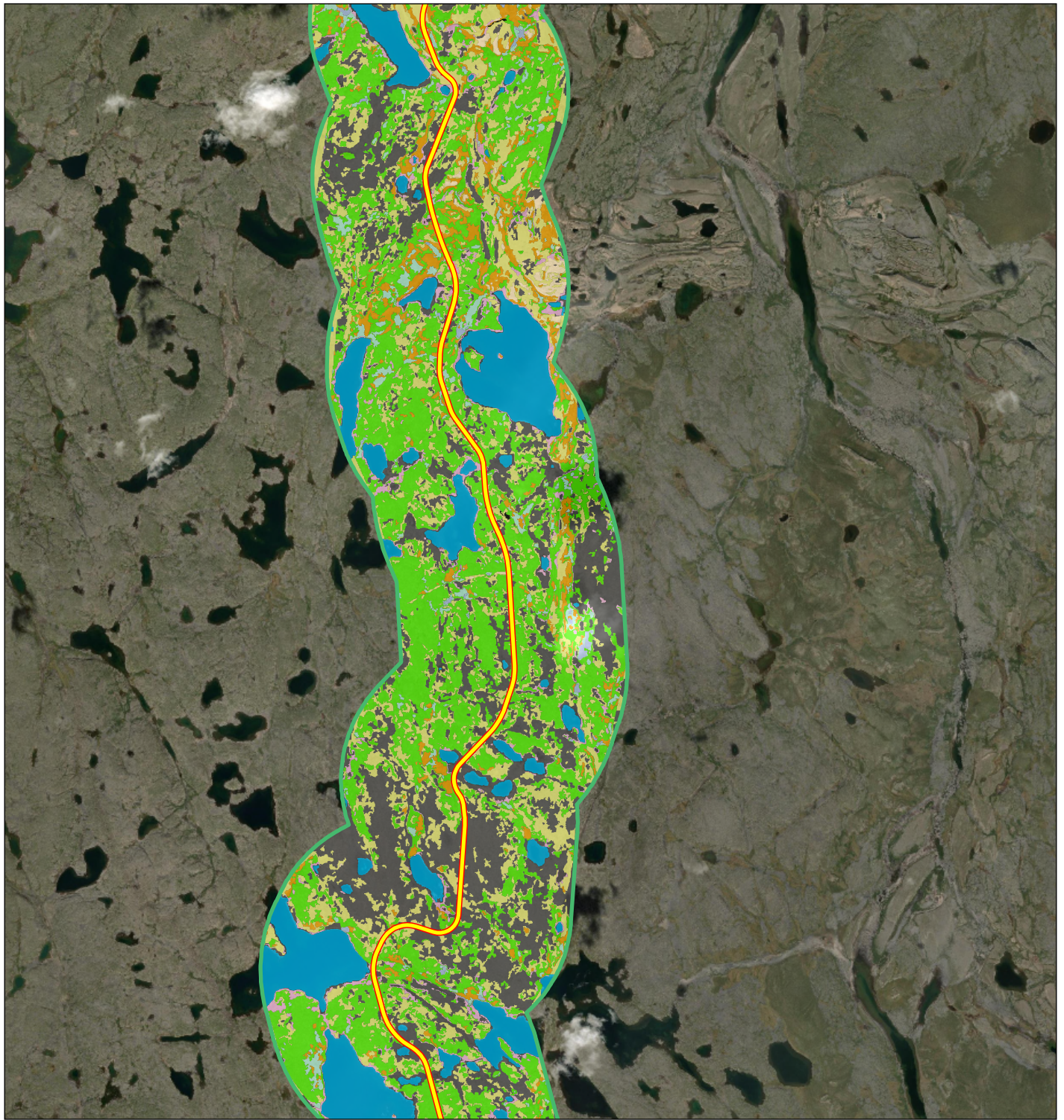
- Boulder / Bedrock
- Unvegetated Exposed Gravel / Cobble
- Exposed Silt Sand
- Heath Crypturbated
- Heath Graminoid
- Heath Bedrock / Boulder
- Heath Tundra
- Low Shrub
- Mine Sites
- Non-Tussock Sedge
- Shadow
- Tall Shrub
- Tussock Sedge
- Water
- Grays Bay Road
- Local Assessment Area (LAA)
- Tibbitt to Contwoyto Winter Road



Project Location: Kitikmeot Region, Nunavut  
 Client/Project: West Kitikmeot Resources Corp, Grays Bay Road and Port  
 Prepared by DSPRY on 2026-02-03  
 TR by SL on 2026-02-03  
 123514888\_089

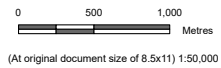
Figure No.: **A.2**

**Landcover Classification within the Local Assessment Area**



**Landcover Class**

- Boulder / Bedrock
- Unvegetated Exposed Gravel / Cobble
- Exposed Silt Sand
- Heath Crypturbated
- Heath Graminoid
- Heath Bedrock / Boulder
- Heath Tundra
- Low Shrub
- Mine Sites
- Non-Tussock Sedge
- Shadow
- Tall Shrub
- Tussock Sedge
- Water
- Grays Bay Road
- Local Assessment Area (LAA)
- Tibbitt to Contwoyto Winter Road

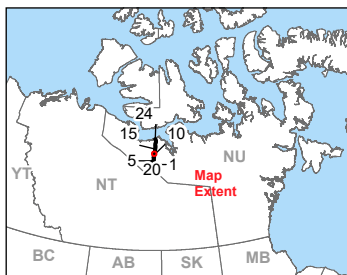
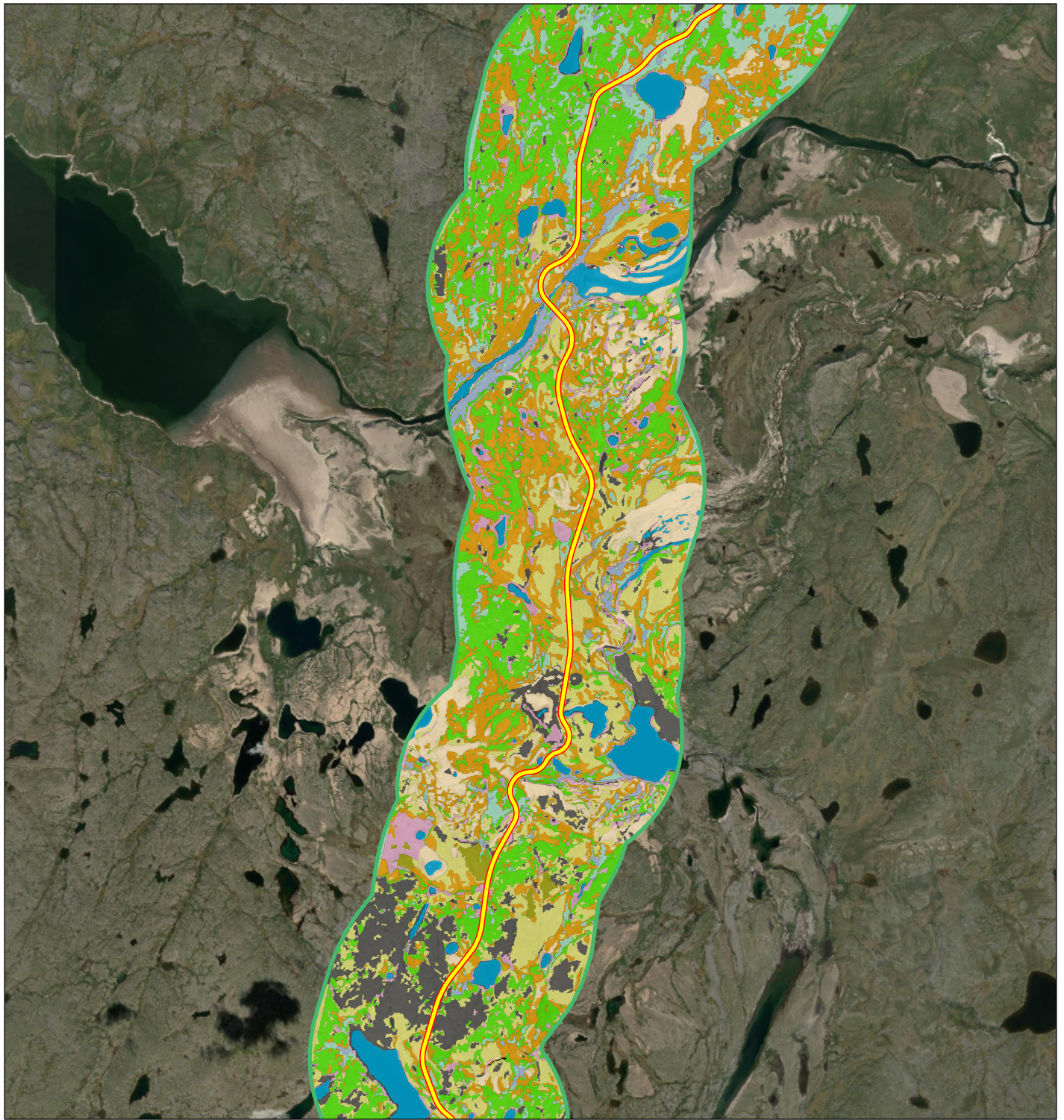


**Notes**  
 1. Coordinate System: WGS 1984 UTM Zone 12N  
 2. Data Sources: Governments of Nunavut and Canada, Stantec, EDI  
 3. Service Layer Credits: World Imagery: Earthstar Geographics

Project Location: Kitikmeot Region, Nunavut  
 Client/Project: West Kitikmeot Resources Corp  
 Grays Bay Road and Port

Figure No.: **A.2**

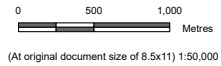
**Landcover Classification within the Local Assessment Area**



**Notes**  
 1. Coordinate System: WGS 1984 UTM Zone 12N  
 2. Data Sources: Governments of Nunavut and Canada, Stantec, EDI  
 3. Service Layer Credits: World Imagery: Earthstar Geographics

**Landcover Class**

- Boulder / Bedrock
- Unvegetated Exposed Gravel / Cobble
- Exposed Silt Sand
- Heath Crypturbated
- Heath Graminoid
- Heath Bedrock / Boulder
- Heath Tundra
- Low Shrub
- Mine Sites
- Non-Tussock Sedge
- Shadow
- Tall Shrub
- Tussock Sedge
- Water
- Grays Bay Road
- Local Assessment Area (LAA)
- Tibbitt to Contwoyto Winter Road



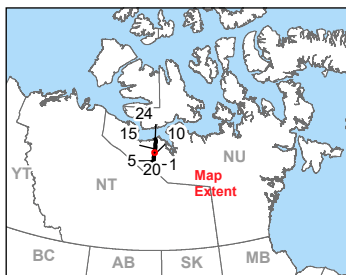
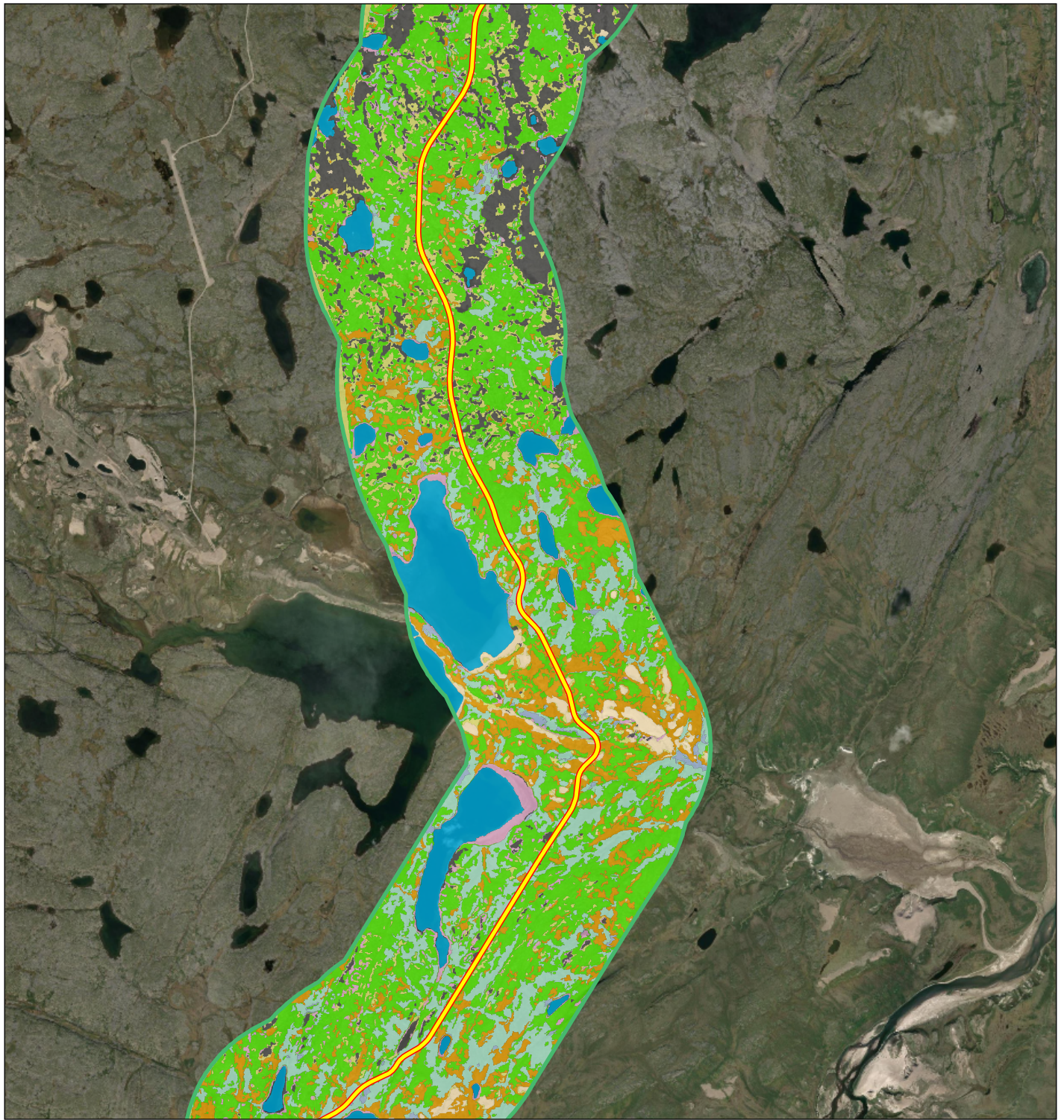
Project Location: Kitikmeot Region, Nunavut  
 Client/Project: West Kitikmeot Resources Corp  
 Grays Bay Road and Port

Figure No.: **A.2**

**Landcover Classification within the Local Assessment Area**

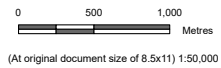
102002-epd-05-gommat-Client\Nunavut\_Stantec\GIS\BPR\Project\123514888\_089\_Vegetation\_EIS\_LAA.mxd - Revised: 2026-02-03 By: doory

Disclaimer: This document has been prepared based on information provided by others as cited in the Notes section. Stantec has not verified the accuracy and/or completeness of this information and shall not be responsible for any errors or omissions which may be incorporated herein as a result. Stantec assumes no responsibility for data supplied in electronic format, and the recipient accepts full responsibility for verifying the accuracy and completeness of the data.



**Landcover Class**

- Boulder / Bedrock
- Unvegetated Exposed Gravel / Cobble
- Exposed Silt Sand
- Heath Crypturbated
- Heath Graminoid
- Heath Bedrock / Boulder
- Heath Tundra
- Low Shrub
- Mine Sites
- Non-Tussock Sedge
- Shadow
- Tall Shrub
- Tussock Sedge
- Water
- Grays Bay Road
- Local Assessment Area (LAA)
- Tibbitt to Contwoyto Winter Road

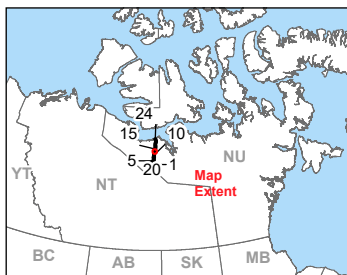
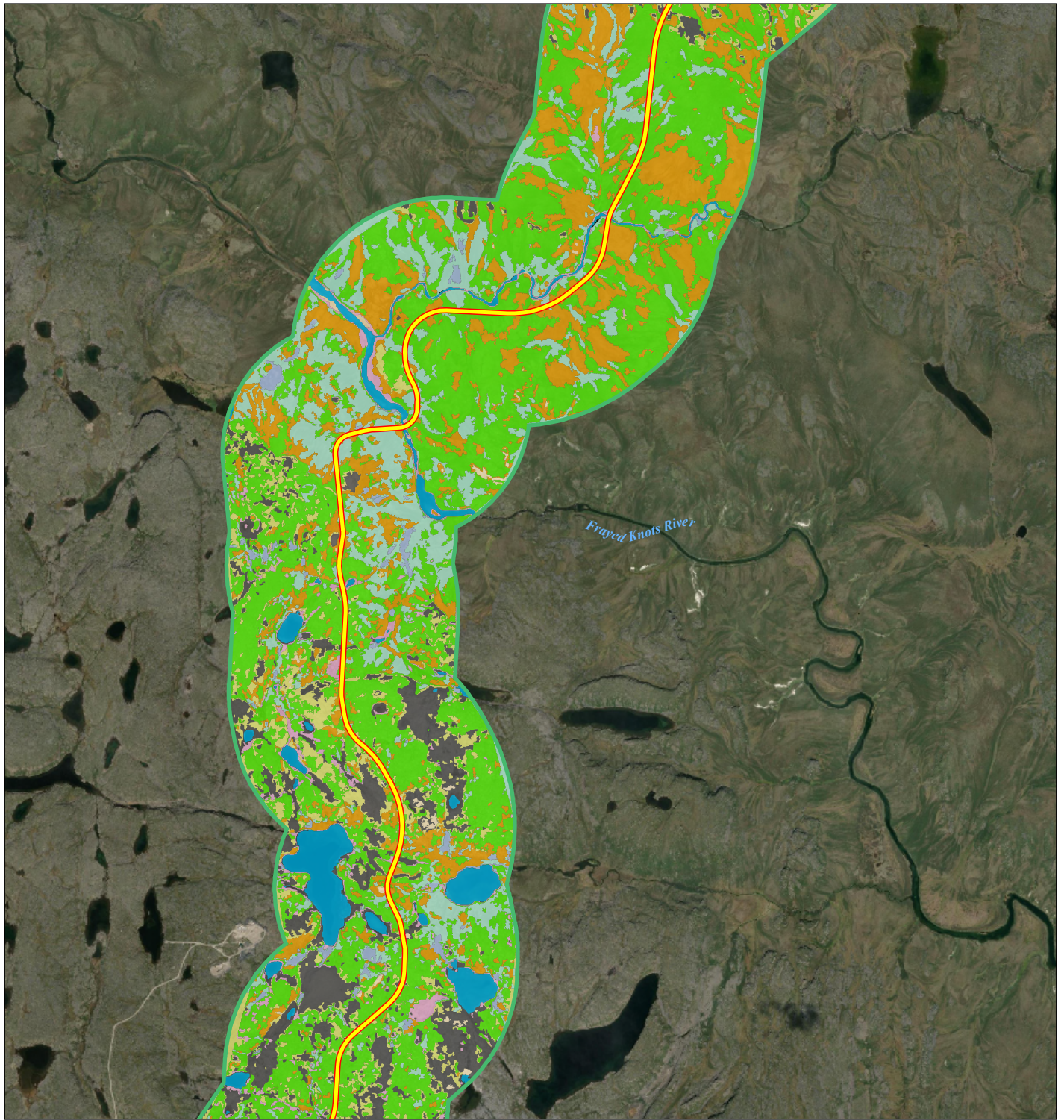


**Notes**  
 1. Coordinate System: WGS 1984 UTM Zone 12N  
 2. Data Sources: Governments of Nunavut and Canada, Stantec, EDI  
 3. Service Layer Credits: World Imagery: Earthstar Geographics

Project Location: Kikmeot Region, Nunavut  
 Client/Project: West Kitikmeot Resources Corp  
 Grays Bay Road and Port

Figure No.: **A.2**

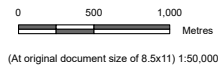
**Landcover Classification within the Local Assessment Area**



- Notes**
1. Coordinate System: WGS 1984 UTM Zone 12N
  2. Data Sources: Governments of Nunavut and Canada, Stantec, EDI
  3. Service Layer Credits: World Imagery: Vantor

**Landcover Class**

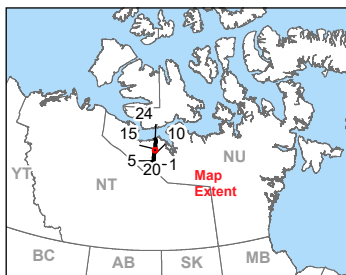
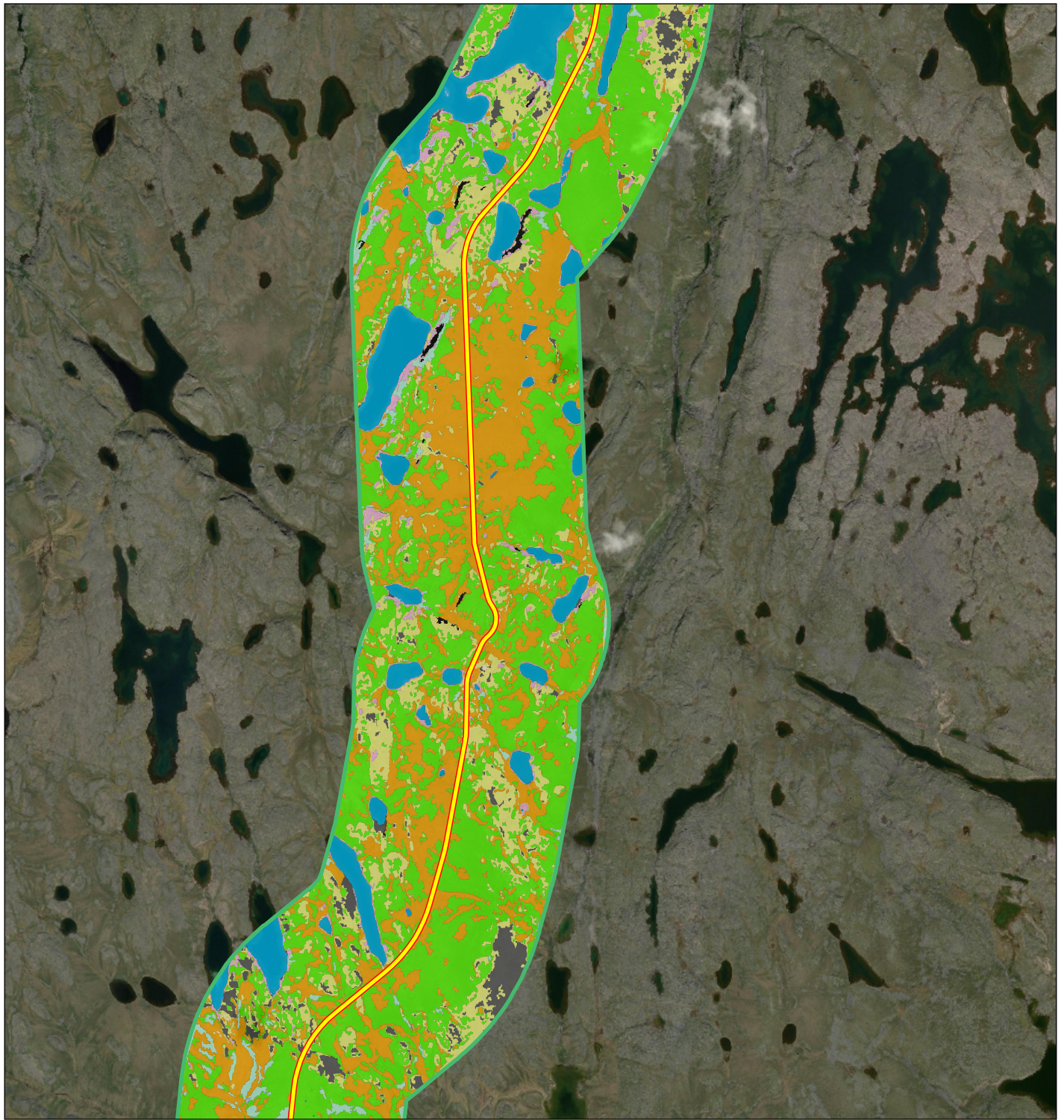
- |                                     |                                  |
|-------------------------------------|----------------------------------|
| Boulder / Bedrock                   | Tall Shrub                       |
| Unvegetated Exposed Gravel / Cobble | Tussock Sedge                    |
| Exposed Silt Sand                   | Water                            |
| Heath Crypturbated                  | Grays Bay Road                   |
| Heath Graminoid                     | Local Assessment Area (LAA)      |
| Heath Bedrock / Boulder             | Tibbitt to Contwoyto Winter Road |
| Heath Tundra                        |                                  |
| Low Shrub                           |                                  |
| Mine Sites                          |                                  |
| Non-Tussock Sedge                   |                                  |
| Shadow                              |                                  |



Project Location: Kitikmeot Region, Nunavut  
 Client/Project: West Kitikmeot Resources Corp, Grays Bay Road and Port

Figure No.: **A.2**

**Landcover Classification within the Local Assessment Area**

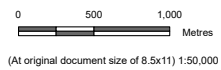


**Notes**  
 1. Coordinate System: WGS 1984 UTM Zone 12N  
 2. Data Sources: Governments of Nunavut and Canada, Stantec, EDI  
 3. Service Layer Credits: World Imagery: Earthstar Geographics

**Landcover Class**

- Boulder / Bedrock
- Unvegetated Exposed Gravel / Cobble
- Exposed Silt Sand
- Heath Crypturbated
- Heath Graminoid
- Heath Bedrock / Boulder
- Heath Tundra
- Low Shrub
- Mine Sites
- Non-Tussock Sedge
- Shadow

- Tall Shrub
- Tussock Sedge
- Water
- Grays Bay Road
- Local Assessment Area (LAA)
- Tibbitt to Contwoyto Winter Road



Project Location: Kitikmeot Region, Nunavut  
 Client/Project: West Kitikmeot Resources Corp  
 Grays Bay Road and Port

Figure No.: **A.2**

**Landcover Classification within the Local Assessment Area**

Y:\02002\epd\05\geomat\Client\Nunavut\_Stanec\GIS\BPF\Parent\123514888\_089\_Vegetation\_EIS\_LAA.mxd - Revised: 2026-02-03 By: doory

Disclaimer: This document has been prepared based on information provided by others as cited in the Notes section. Stantec has not verified the accuracy and/or completeness of this information and shall not be responsible for any errors or omissions which may be incorporated herein as a result. Stantec assumes no responsibility for data supplied in electronic format, and the recipient accepts full responsibility for verifying the accuracy and completeness of the data.