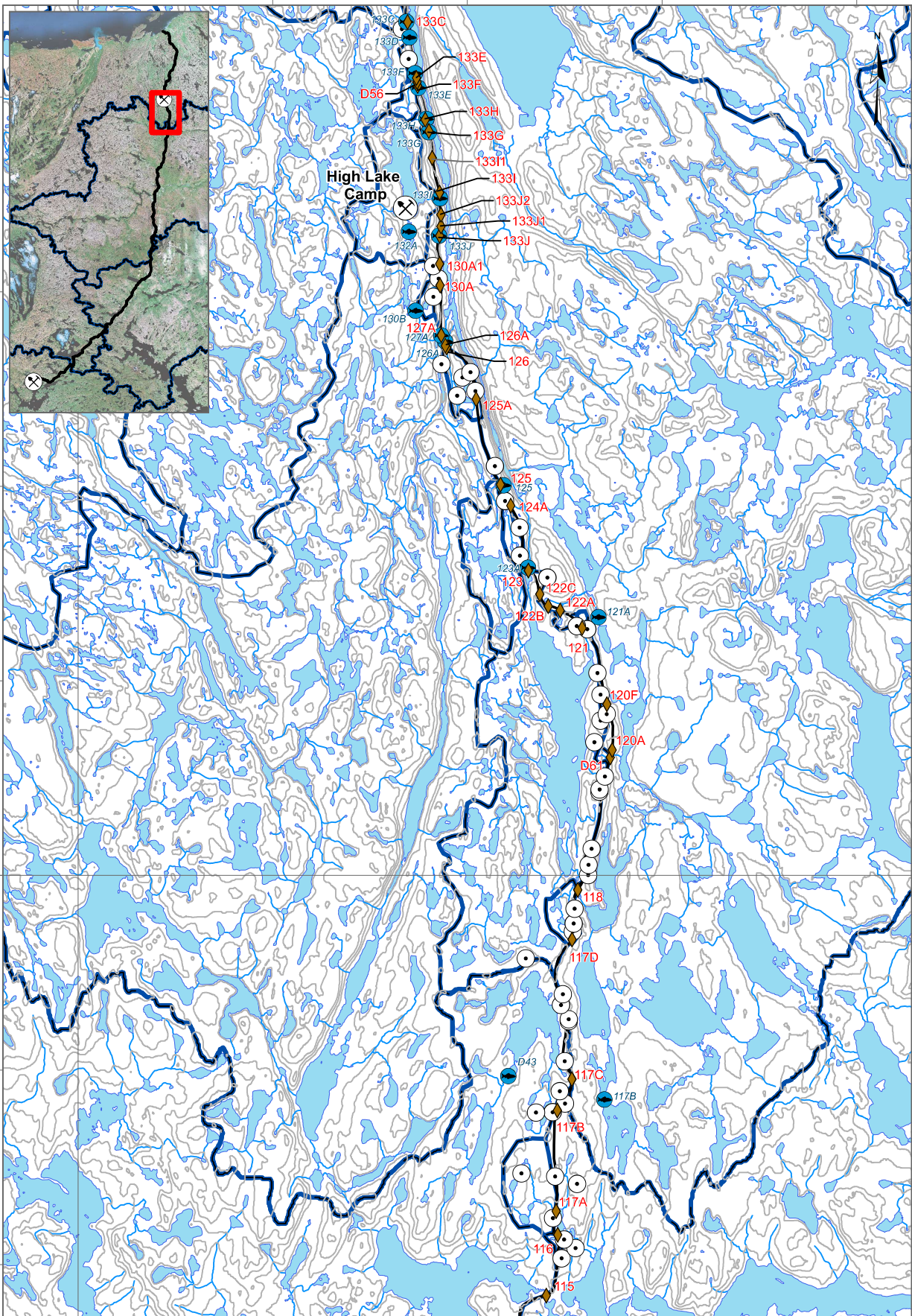


500,000



7,460,000

7,460,000

500,000

LEGEND

- Waterbodies
- Streams of Various Flow Volumes
- Contours (20m)
- Catchment boundaries delineated by Northwest Hydraulic Consultants
- Inferred catchment boundaries by Lorax Environmental
- Izok Road
- Mine Site
- Fisheries observations made by BGC at stream crossings
- Fisheries Data provided by RC Biosolutions
- Quarries and Rock Cuts

DATE SAVED: Jan 26, 2013
 DRAWN BY: GM
 REVIEWED BY: NM
 VERSION: 1

Coordinate System: NAD 1983 UTM Zone 12N
 Projection: Transverse Mercator
 Datum: North American 1983

Units: Meter
 1:75,000
 0 1 2 Km

CLIENT:

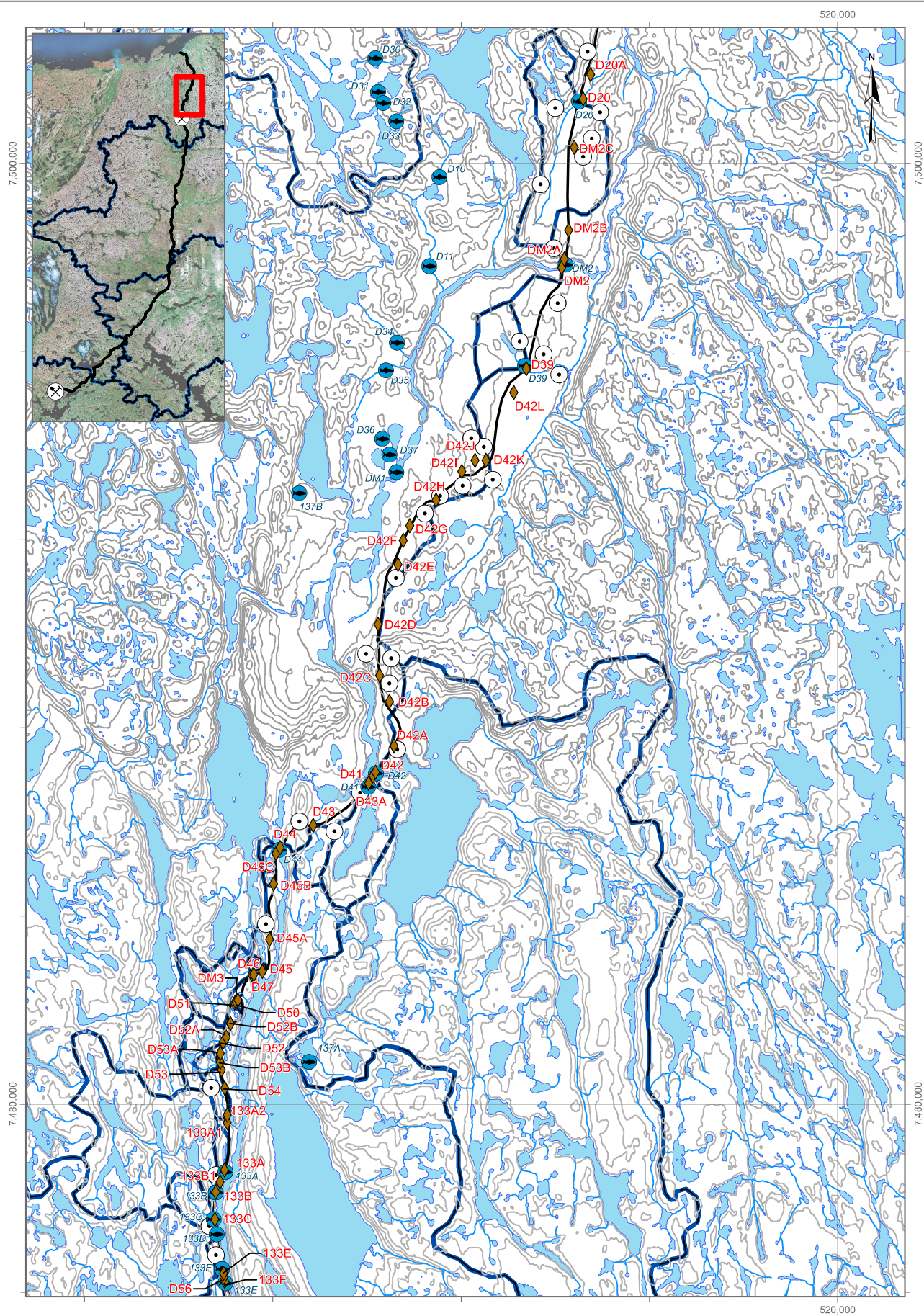




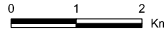

PROJECT:

**Izok Road
Risk Assessment**

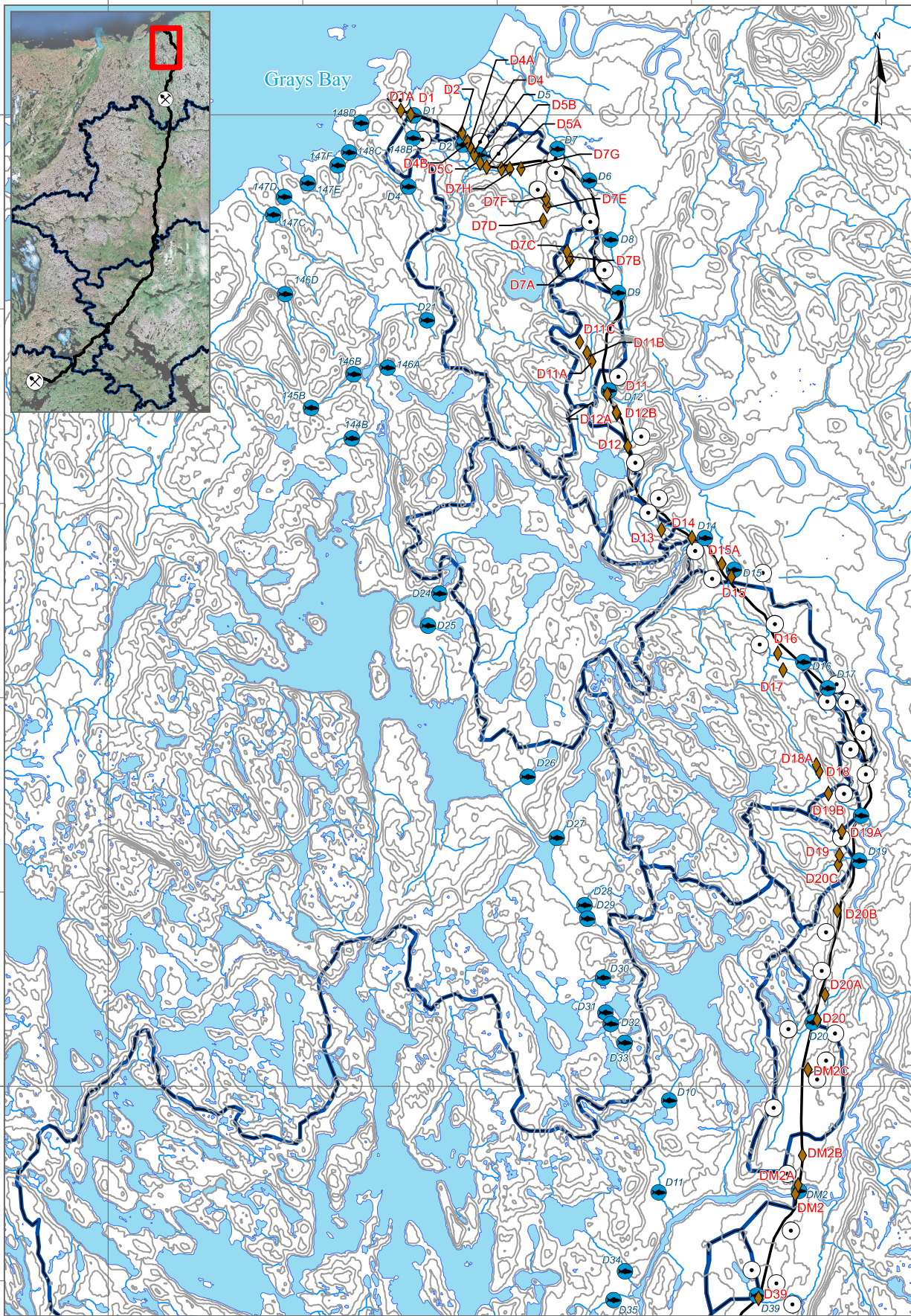
TITLE: Izok Road Catchment Boundaries and Fisheries Data Part 10

PROJECT #: J995-3 FIGURE: B.10



LEGEND <ul style="list-style-type: none"> — Waterbodies — Streams of Various Flow Volumes — Contours (20m) — Catchment boundaries delineated by Northwest Hydraulic Consultants — Inferred catchment boundaries by Lorax Environmental — Izok Road ⊗ Mine Site ◆ Fisheries observations made by BGC at stream crossings ● Fisheries Data provided by RC Biosolutions ○ Quarries and Rock Cuts 	DATE SAVED: Jan 26, 2013 DRAWN BY: GM REVIEWED: NM VERSION: 1	CLIENT:  	PROJECT: <h3 style="text-align: center;">Izok Road Risk Assessment</h3>
	Coordinate System: NAD 1983 UTM Zone 12N Projection: Transverse Mercator Datum: North American 1983 Units: Meter 1:75,000 	TITLE: Izok Road Catchment Boundaries and Fisheries Data Part 11	PROJECT #: J995-3 FIGURE: B.11

P:\995 (Izok High Lake)\Drafting\MXD\Road Maps\trains and fisheries_29Jan2013\IZOK road part 11.mxd



LEGEND	
	Waterbodies
	Streams of Various Flow Volumes
	Contours (20m)
	Catchment boundaries delineated by Northwest Hydraulic Consultants
	Inferred catchment boundaries by Lorax Environmental
	Izok Road
	Mine Site
	Fisheries observations made by BGC at stream crossings
	Fisheries Data provided by RC Biosolutions
	Quarries and Rock Cuts

DATE SAVED:	Jan 26, 2013
DRAWN BY:	GM
REVIEWED:	NM
VERSION:	1
Coordinate System: NAD 1983 UTM Zone 12N	
Projection: Transverse Mercator	
Datum: North American 1983	
Units: Meter	
1:75,000	
0 1 2 Km	

CLIENT:

PROJECT:	Izok Road Risk Assessment
TITLE:	Izok Road Catchment Boundaries and Fisheries Data Part 12
PROJECT #:	J995-3
FIGURE:	B.12