



## NIRB Uuktuutinga Ihivriuqhikhamut #125989

### Arviat new quarry sites

<b>Uuktuutinga Qanurittuq:</b>	New
<b>Havaap Qanurittunia:</b>	Pits and Quarries
<b>Uuktuutinga Ublua:</b>	8/14/2024 4:35:46 PM
<b>Period of operation:</b>	from 2024-06-23 to 2054-09-22
<b>Havauhikhaq Ikayuqtinga:</b>	Randy Mercer Government of Nunavut P.O. Box 272 Kugluktuk Nunavut X0B 0E0 Canada Hivayautit Nampanga:: 867-982-7657, Kayumiktukkut Nampanga:: NIL

# QANURITTUT

**Tukhiannaqtunik havaariyauyumayumik uqauhiuyun**

**Qablunaatitut:** This project proposes new Hamlet quarry sites within the Arviat municipal boundary. The proposed new quarry/aggregate sites will serve current and future aggregate needs of the Hamlet such as road construction and maintenance, land grading/scaping, and other similar hamlet needs. The quarry/aggregate sites will also be used by various private persons and entities to serve their aggregate needs once they apply to the Hamlet for a quarry permit.

Uiviititut: Ce projet propose de nouveaux sites de carrières pour le hameau dans les limites de la municipalité d'Arviat. Les nouveaux sites de carrières et de granulats proposés répondront aux besoins actuels et futurs du hameau en matière de granulats, tels que la construction et l'entretien des routes, le nivellement et l'aménagement du terrain, et d'autres besoins similaires du hameau. Les sites de carrières et de granulats seront également utilisés par diverses personnes et entités privées pour répondre à leurs besoins en granulats une fois qu'elles auront demandé au hameau un permis d'exploitation de carrière.

[illegible]

Inuinnaqtun: Una havauhikhaq pitqujait nutaaq Haamlatkut ujarakhiurviit talvani Arviani haamlangit kiklikhanganik. Tukhiqtauhimajuq nutaamik ujaraktaqvikhanik / inigijaujut kivgaqtuqniatut tadsja hivunikhamilu atautimuktirniginik ihariagijainik Hamliujuq ilaa apqutit hanajauniginik munariniganiklu, nunamik munakhaliurniq/ihuaqhaqtaujuukhaq ajikutavjainik hamliujuni ihariagijainik. Ujagaktaqvik/atuqtauhimaaqtuq inigijaujut atuqtauniaqtut aalatqiinit nanminik inuknit timiujulu kivgaqturiagani tamainit ihariagijamimiknik uuktuqata Hamliujut ujaraktaqviknik laisikharnik.

## Personnel

Personnel on site: 1

Days on site: 10950

Total Person days: 10950

Operations Phase: from 2024-06-23 to 2054-09-22

Closure Phase: from 2054-09-22 to 2054-10-22

Hulilukaarutit

Inigiya	Hulilukaarut Qanurittuq	Nunannga Qanurittaakhaanik	Initurlinga qanuritpa	Initurlinga utuqqarnitat unaluuniit Ingilraaqnitat Uyarannguqtut akhuurninnga	Qanitqiyauyuq qanitqiamut nunallaat kitulluuniit ahiruqtaliyainnit nuna
Quarry sites C,D, and E.	Quarry/Borrow pit	Commissioners	No previous history	A archeological assessment will be completed this summer.	Approx. 6.5 Kilometres North- west of the community of Arviat.
Quarry sites A and B.	Quarry/Borrow pit	Commissioners	Some areas within the site are being used recreationally by local residents (cabins, beach etc..)	A archeological assessment will be completed this summer.	Approx. 5.5 Kilometres North- west of the community of Arviat.

Nunaliin Ilauyun, Aviktuqhimayuniitunullu Ikayuuhiarunguyun

Nunauyuq	Atia	Timiuyuq	Upluani Uqaqatigiyaungmata
Arviat	John Hussey, Senior Administrative officer & Hamlet Council.	Hamlet of Arviat	2024-01-23

# Angiuttauvaktunik

Naunaiqlugu nunanga talvani havauhikhaq ittuq:

Angiuttauvaktunik

Munariniqmut Ayuittiaqtuq	Angirutinga Qanurittuq	Tadja Qanurittaakhaanik	Ublua Tuniyauyuq/Uuktuqtuq	Umikvikhaa Ublua
Government of Nunavut, Community Government & Services	CGS is the applicant on behalf of the Hamlet of Arviat	Active	2024-01-23	
Hamlets and Municipalities	Hamlet council approved CGS applying for NPC/NIRB approval through council motion # 10/24	Active	2024-01-23	

## Project transportation types

Transportation Type	Qanuq Atuqtauniarmangaa	Length of Use
Land	Local and private dump trucks, loaders, excavators, screeners, and crushing machines	

## Project accomodation types

Nunauyuq

# Ihuaqutivaluin Atuqtauyukhan

Hanalrutit atuqtaunahuat (ukuallu ikuutat, pampiutainnik, tingmitinik, akhaluutinik, hunaluuniit)

Hanalrutit Qanurittuq	Qaffiuyut	Aktikkulaanga – Qanurittullu	Qanuq Atuqtauniarmangaa
CAT Loader	1	5.7m x 2.7m x 1.5m	Excavate quarry material
Dump Truck	1	8m x 2.5m x 3.4m	haul quarry material
Track Excavator	1	10m(L) x 3.2m (H) x 3.2m (W)	excavate quarry material
Screener	1	14.2m(L) x 4m(H) x 4.9m (W)	Screen undesirable aggregate and large boulders

## Qanurittuq Urhuqyuaq unalu Qayangnaqtut Hunavaluit Aturninnga

Qanurittuq urhuqyuaq hunavaluit aturninnga:	Urhuqyuaq Qanurittuq	Qaffiuyut qattaryut	Qattaryuk Aktikkulaanga	Atauttimut Qaffiuyut	Ilanga	Qanuq Atuqtauniarmangaa
Diesel	fuel	1	535	535	Liters	fuel tank that attached to the CAT loader. Diesel will be taken from the community fuel station.
Diesel	fuel	1	567	567	Liters	fuel tank that attached to the Dump Truck. Diesel will be taken from the community fuel station.
Diesel	fuel	1	600	600	Liters	fuel tank that attached to the Track Excavator. Diesel will be taken from the community fuel station.
Diesel	fuel	1	276	276	Liters	fuel tank that attached to the Screener. Diesel will be taken from the community fuel station.

## Imaqmik Aturninnga

Ubluq qanuraaluk (m3)	Aturumayain imavaluin utiqittagaani qanuq	Atulirumayain imavaluin utiqittagani humi
0		

# Iqqakuq

## Ikkakunik Munakgiyauyunik

Havauhikhaq Hulilukaarut	Qanurittuq Iqqakut	Ihumagiyauyuq Qanuraaluktut Atuqtait	Qanuq Iqqakuurniarmangaa	Halummaqtirarnirutikhan piyutin
Quarry/Borrow pit	Atakuin (halumaiqtun nunan, iqqakuuvaluillu uyaqqiqivingmin)	1,000,000 cubic metres	Overburden will be stockpiled for specific uses as determined by the Hamlet or stored within the quarry sites to be recycled by way of reclamation once the quarry site is depleted of useable material.	NIL

### Avatiliriniqmut Ayurhautingit:

The natural vegetation such as moss and other arctic plants on the surface will be disturbed or destroyed within the excavation area within quarry boundaries. This is unavoidable due to the nature of quarry operations. Additional environmental impacts and the mitigation measures are outlined the Spill Contingency and the dust mitigation measures Plans attached to this application.

# **Additional Information**

## **SECTION A1: Project Info**

## **SECTION A2: Allweather Road**

## **SECTION A3: Winter Road**

## **SECTION B1: Project Info**

## **SECTION B2: Exploration Activity**

## **SECTION B3: Geosciences**

## **SECTION B4: Drilling**

## **SECTION B5: Stripping**

## **SECTION B6: Underground Activity**

## **SECTION B7: Waste Rock**

## **SECTION B8: Stockpiles**

## **SECTION B9: Mine Development**

## **SECTION B10: Geology**

## **SECTION B11: Mine**

## **SECTION B12: Mill**

## **SECTION C1: Pits**

Any unsuitable overburden material encountered will be stripped from the working area and stockpiled in separate, designated areas, or discarded. Excavation depth will depend on the terrain features but will typically involve digging 1 to 4 metres down from the surface. Proper drainage of the sites will be maintained to ensure medium to large size puddles/ponds do not form. The extraction face will maintain a safe angle to prevent landslides and personnel or public injury. Since each site contains a varying mixture of gravel, sand, and silt; a screener will filter aggregate to its desired specifications. Stockpiling will be permitted within the sites, but such piles will adhere to the restrictions outlined in the Dust Management Plan. All mobile equipment will not refuel on site, but instead will use the local gas station in Arviat. There will be no petroleum stored on site, but a screener and other mobile equipment may be parked overnight. These types of equipment are equipped with diesel tanks. The capacity of each tank is outlined in the Spill Contingency Plan. Prospective site #3 contains a publicly used road. To minimize any hazards or injury to the public, and if the Hamlet deems it necessary, boulders will be placed along the road certain heavy traffic areas within the quarry boundary to prevent traffic from entering the extraction area. The Hamlet has no set operating times regarding quarry extraction but activates usually cease at approximately 9:00PM. This prevents the possibility of traffic collisions during the night when visibility is low. The Hamlet extracts material using their own mobile equipment under an assumed municipal permit, but private individuals and contractors are required to obtain a quarry permit from the Hamlet. Once a permit is obtained, the private individual(s) or contractor(s) extract aggregate to the permitted amount using their own mobile equipment.

Due to limited municipal personnel and resources, supervision of extraction by private individuals or contractors may not occur. Annual extraction quantities are not known due to the sporadic nature of both the public and private sector construction projects. The permit will contain terms and conditions that will require the contractor to follow any conditions imposed by the Nunavut Planning Commission, Nunavut Impact Review Board, The department of Culture & Heritage, or other regulatory authorities. Once the quarry is depleted of useable material, quarry operations cease. Steep slopes will be levelled to a safe angle by the Hamlet. Any ditches will be filled and levelled with the quarry base. All mobile equipment will be removed. Unnatural waste, debris, scrap, and other garbage will be removed. Due to limited capacity and resources, replanting is not feasible.

#### **SECTION D1: Facility**

#### **SECTION D2: Facility Construction**

#### **SECTION D3: Facility Operation**

#### **SECTION D4: Vessel Use**

#### **SECTION E1: Offshore Survey**

#### **SECTION E2: Nearshore Survey**

#### **SECTION E3: Vessel Use**

#### **SECTION F1: Site Cleanup**

#### **SECTION G1: Well Authorization**

#### **SECTION G2: Onland Exploration**

#### **SECTION G3: Offshore Exploration**

#### **SECTION G4: Rig**

#### **SECTION H1: Vessel Use**

#### **SECTION H2: Disposal At Sea**

#### **SECTION I1: Municipal Development**

#### **Qanurittuq Ittunik Avatinga: Avatingalluanga**

All sites have similar terrain features and contain vegetation typically found in Nunavut such as moss and other arctic plants. All quarry sites are relatively flat and mostly contain construction grade aggregate. The other areas contain pit-run, sand, and other finer material that have limited uses will be stockpiled. There is a waterbody within prospect #3 with an approximate diameter of 193 metres with unknown marine biology and depth. Another notable narrow waterbody is contained with Prospect #3 with length of 283 metres and a width of 30 metres. The marine biology and depth of unknown. A 31-metre buffer zone will be maintained from the waterbody to ensure they are not disturbed. Prospect #3 contains a public recreational road through the middle that is used by the resident of the community to travel north of the community. The road will be unaltered, although there may be upgrades to certain portions of the road to accommodate heavier traffic. There is no evidence of thermokarst ponds, ice lensing, ground or rock



instability and seismicity within all sites. Surface and bedrock geology, permafrost, and sediment and soil quality for any site is not known.

### **Qanurittuq Ittunik Avatinga: Inuuhimayunut Avatinga**

All sites contain vegetation typically found in Nunavut such as moss and other arctic plants. There are no wildlife or bird migration routes nor is there any species of concern within any boundary.

### **Qanurittuq Ittunik Avatinga: Inungit-maniliurutingit Avatinga**

Quarry sites C, D, & E contain recreational cabins and a beach area within their boundaries. The Hamlet has not indicated what they plan to do with these sites but aggregate extraction during the early days will avoid and maintain a safe distance from these recreationally used areas. An archeological assessment study will be completed this summer to ensure there are no protected areas within all quarry boundaries. There is no subsistence harvesting, tourism, trapping or guiding operations within the quarry sites. Since both sites are 5 kilometres or further from the community of Arviat, quarry operations by way of the extraction process will minimally affect the well-being of the local residence.

### **Miscellaneous Project Information**

Additional information can be seen in the Dust Management and Spill contingency

### **Naunaiyainiq ukuninnga Ayurhautingit unalu Piumayaat Ikikliyuumiutinahuarutit**

The local Hamlet will be the administrator of all sites. They will be used by both the Hamlet and the public. The Hamlet will issue quarry permits to the public and these quarry permits will come with the following conditions: No extraction of aggregate will occur within 31 metres of any waterbody. The contractor will inform the Hamlet the date and time when they plan to extract the material to ensure the Hamlet, if deemed necessary, supervise the extraction of aggregate. The extraction of aggregate and their surroundings, is done in an environmentally sound manner that is satisfactory to the Hamlet and/or NIRB. Excavation is not to occur outside of the established quarry boundary. Stockpiling of aggregate will be located at least 31 metres from any waterbody to avoid water siltation and obstruction. Access to and from the quarry site will only be done through designated roads. Once extraction of aggregate is complete then the contractor will remove all types of their equipment from the site and slops grade reduction with use of unsuitable stockpiles and uncrushed rocks. The contractor will follow the quarry plans. There will be no petroleum stored on site, but the equipment used in the extraction of aggregate such as loaders and excavators do have diesel tanks attached to them. The Hamlet and private contractors will be required to follow the Spill contingency plan.

### **Tamatkiumayunik Ihuikgutivaktunik**

Since roads to all quarry sites already exists and services recreational traffic to and from Arviat. Any added cumulative effects from quarry operations relating to human activity will be minimal.

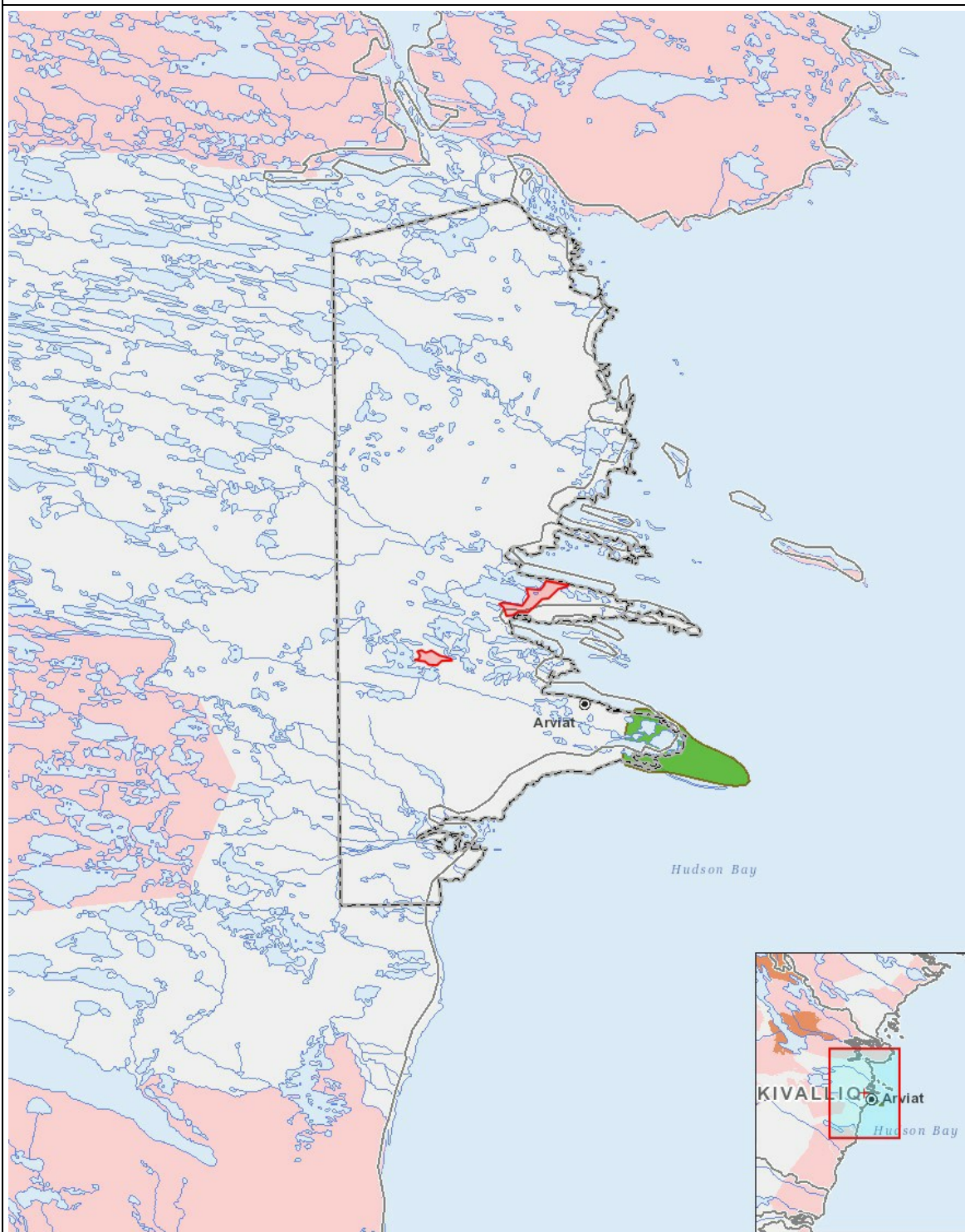
# Impacts

## Ilitariyauniq Avatiliriniqmut Ayurhautingit

	PHYSICAL	Designated environmental areas	Ground stability	Permafrost	Hydrology / Limnology	Water quality	Climate conditions	Eskers and other unique or fragile landscapes	Surface and bedrock geology	Sediment and soil quality	Tidal processes and bathymetry	Air quality	Noise levels	BIOLOGICAL	Vegetation	Wildlife, including habitat and migration patterns	Birds, including habitat and migration patterns	Aquatic species, incl. habitat and migration/spawning	Wildlife protected areas	SOCIO-ECONOMIC	Archaeological and cultural historic sites	Employment	Community wellness	Community infrastructure	Human health
<b>Havakvinga</b>	-	-	-	-	-	-	-	-	-	-	-	-	-	-	-	-	-	-	-	-	-	-	-	-	-
<b>Aulapkaininnga</b>																									
Quarry/Borrow pit		-	U	U	-	-	-	M	U	U	-	-	M		M	-	-	-	-	-	-	P	P	P	-
<b>Piiqtauniq</b>																									
Quarry/Borrow pit		-	U	U	-	-	-	N	U	U	-	-	N		N	-	-	-	-	-	-	P	P	P	P

(P = Nakuuyuq, N = Nakuungittut unalu mikhilimaittuq, M = Nakuungittut unalu mikhittaaqtuq, U = Naluyauyuq)

## Havaariyauyukhamut Nayugaa



### List of Project Geometries

- |   |         |                          |
|---|---------|--------------------------|
| 1 | polygon | Quarry sites C,D, and E. |
| 2 | polygon | Quarry sites A and B.    |