

መግባቱን ማረጋገጥ ለማድረግ ልዩ ልዩ ስራዎችን ያለፈውን 180,000-ራዕሰ ሰዓቶች ለማሟላት ማስፈጸም ይኖርባቸዋል። ስለዚህ ማረጋገጫ ስራዎችን ለማድረግ ልዩ ልዩ ስራዎችን ያለፈውን 180,000-ራዕሰ ሰዓቶች ለማሟላት ማስፈጸም ይኖርባቸዋል።

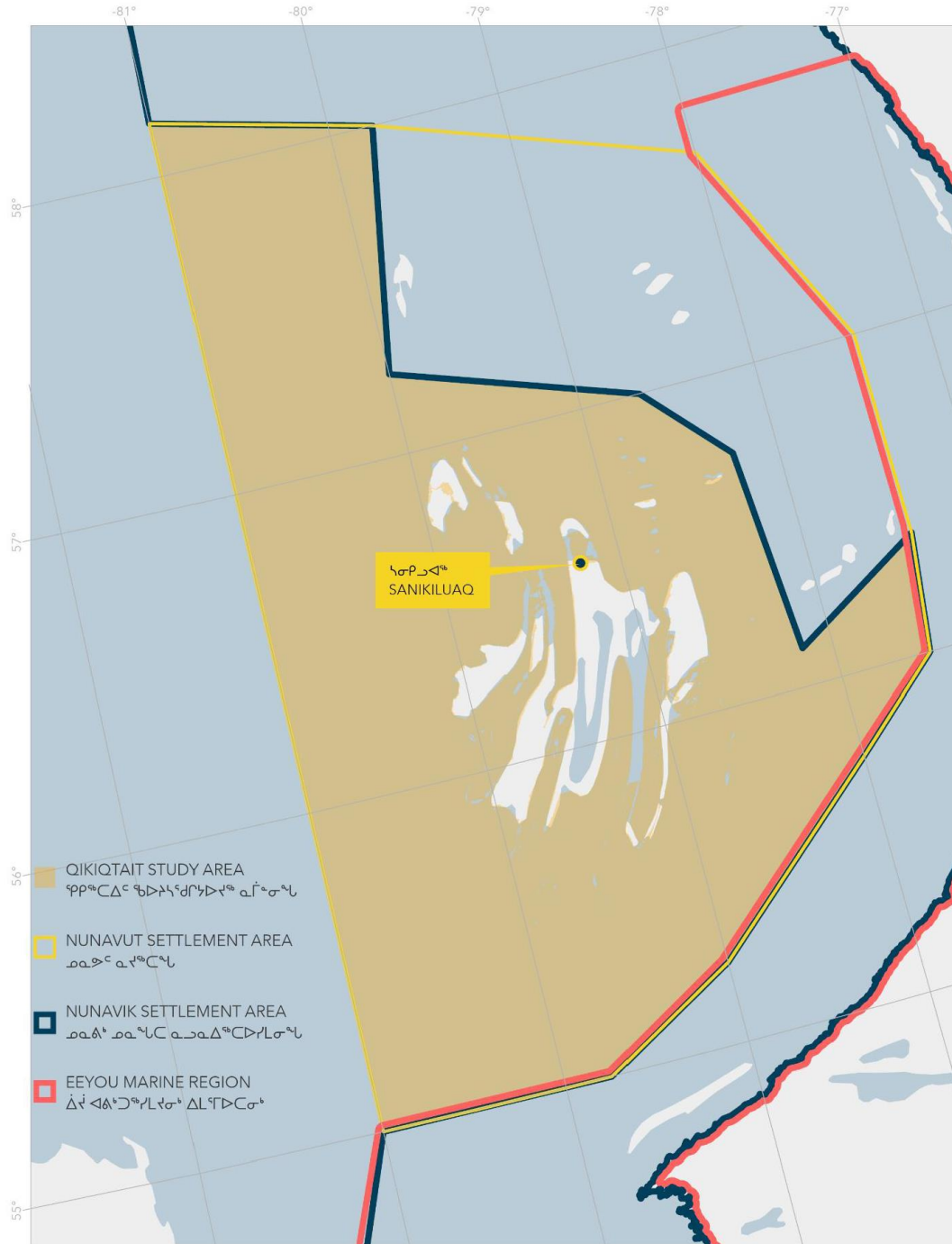


Figure 1. ማረጋገጫ ስራዎችን ለማድረግ ልዩ ልዩ ስራዎችን ያለፈውን 180,000-ራዕሰ ሰዓቶች ለማሟላት ማስፈጸም ይኖርባቸዋል።

² DFO. 2011. Identification of Ecologically and Biologically Significant Areas (EBSAs) in the Canadian Arctic. Sci. Advis. Rep.:2011/055. ለፍጥነት ለማድረግ ልዩ ልዩ ስራዎችን ያለፈውን 180,000-ራዕሰ ሰዓቶች ለማሟላት ማስፈጸም ይኖርባቸዋል። (Project Description, DOC ሰነድ ቁጥር 352370).

Margaret Friesen, Canadian Northern Economic Development Agency
Eva Walker, Environment and Climate Change Canada
Transport Canada
Richard Dwyer, Nunavut Water Board
Johnny Appaqaq, Municipality of Sanikiluaq
Robert Hedley, Hamlet of Sanikiluaq
Sanikiluaq Hunters & Trappers Association
Eeyou Marine Region Wildlife Management Board
Mark Basterfield, Nunavik Marine Region Wildlife Board
Adamie Delisle Alaku, Makivvik Corporation
Andy Moorhouse, Makivvik Corporations