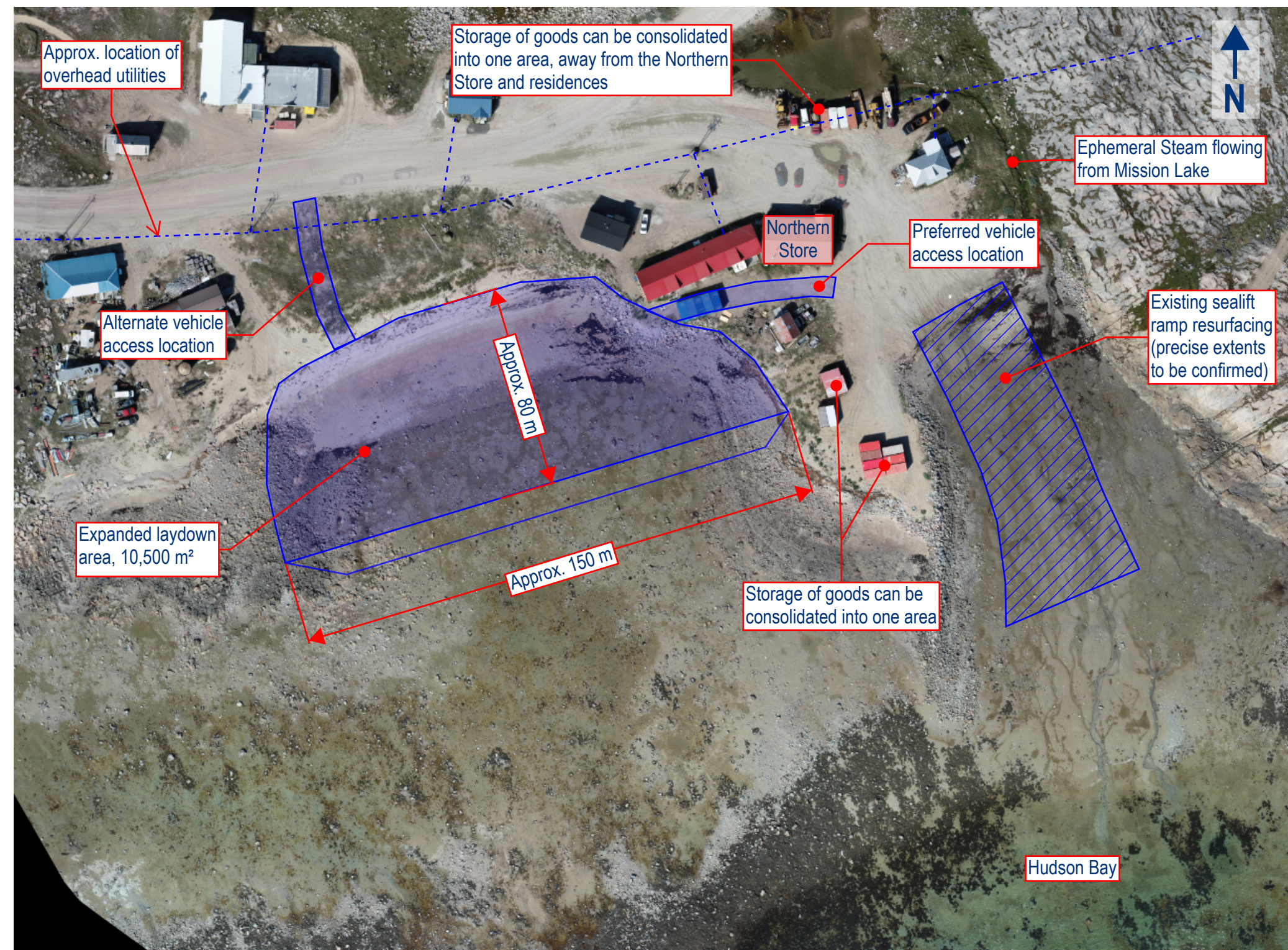


CHESTERFIELD INLET SEALIFT IMPROVEMENTS - LAYDOWN AREA EXPANSION

OPTION 1: INFILL SMALL BAY WEST OF THE SEALIFT RAMP



DESCRIPTION:

- Creates approximately **10,500 m²** of additional laydown area (approximately **5.3 times more space** than existing).
- Approx. 11,700 m² of sea floor infilled and 175 m of existing shoreline impacted.
- Construction will require approximately 6,500 m³ to 9,000 m³ of fill material (rock and crushed gravel).
- Allows goods to be temporarily stored in one area away from houses and the Northern Store entrance and parking area.
- Construction of new accesses required. Relocation of some shipping containers required.