

## **1. Project Overview**

### **1.1. Introduction**

This document is the Application Letter for the Nunavut Impact Review Board (NIRB) for the Resolute Bay Community Harbour Project (the Project).

The Tallurutiup Imanga National Marine Conservation Area (TI NMCA) is an important designated area located in the Canadian Arctic, specifically in Lancaster Sound (Tallurutiup Imanga) and its adjacent waterways. This conservation area was established to protect and preserve the unique and ecologically important marine environment for Inuit and all Canadians. Establishment of protected areas within Canada's high Arctic basin, such as the TI NMCA, is a requirement of the Inuit Impact and Benefit Agreement (IIBA). A Memorandum of Understanding (MoU) between the Qikiqtani Inuit Association (QIA), the Government of Nunavut (GN), and the Government of Canada has resulted from the creation of the TI NMCA and was signed in the summer of 2021. The purpose of this agreement is to recognize that marine infrastructure is connected to community wellbeing as well as economic and social development, and to address the marine infrastructure deficit in several communities, including Resolute Bay and Grise Fiord. A portion of the waterfront within the several communities (such as Resolute Bay) that are within the TI NMCA is excluded through Article 4 of the IIBA (IIBA, 2019) to allow for the development of marine infrastructure. This will be accomplished with funding from the Government of Canada for a community harbour in both Resolute Bay and Grise Fiord.

The Project is being managed by the GN, where GN-Community and Government Services (CGS) is the proponent during the construction stage, and ownership will transfer to GN-Economic Development and Transportation (EDT) during the operations stage. The two GN departments are working collaboratively on the Project and are collectively referred to as GN-CGS/EDT as the proponent for the permitting of the Resolute Bay community harbour. Effective 01 April 2025, GN-CGS and GN-EDT, will be merged and referred to as the Departments of Transportation and Infrastructure (GN-TIN) (GN, 2024).

Worley Canada Services Ltd., operating as Worley Consulting, has been retained by the GN-CGS/EDT to support the detailed design of a community harbour facility in Resolute Bay, Nunavut (Figure 1-1). Dynamic Ocean Consulting Ltd. (Dynamic Ocean) is supporting Worley Consulting on the permitting requirements for the Project. The Resolute Bay community harbour was a component of an earlier feasibility study, completed by Fisheries and Oceans Canada – Small Craft Harbour (DFO-SCH) in 2019.

### **1.2. Project Location**

The Project is located at Resolute Bay, a Hamlet on the southern shore of Cornwallis Island in Parry Channel (74° 41.472'N, 94° 51.549'W; Figure 1-1). The community is located in the Qikiqtaaluk Region, and conforms with the North Baffin Regional Land Use Plan (NBRLUP) (Nunavut Planning Commission (NPC, 2000)). While Resolute Bay is within the NBRLUP, the Recommended Nunavut Wide Land Use Plan (RNLP) (NPC, 2023) will replace the NBRLUP once it is approved.





LEGEND

- HAUL ROAD ON EXISTING ROAD/TRACK
- ALTERNATE/ADDITIONAL HAUL ROUTE
- COMMUNITY STUDY AREA
- QUARRIES STUDY AREA
- EXISTING ROAD STUDY AREA
- STOCKPILE/LAYDOWN AREA
- QUARRY

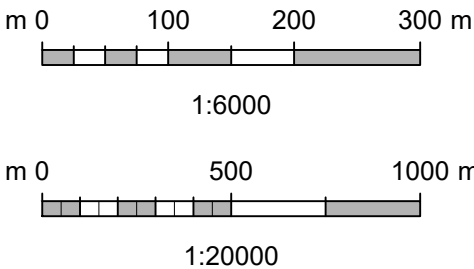




Figure 1-1		GOVERNMENT OF NUNAVUT RESOLUTE BAY COMMUNITY HARBOUR DEVELOPMENT			
PROJECT COMPONENTS (QUARRY, HAUL ROAD, COMMUNITY HARBOUR)					
	Date: 03-APR-25	Drawn by: JLC	Edited by: JLC	App'd by: CM	
			Worley Project Number		
			317086-54175		
			DRG No	1	REV
This drawing is prepared for the use of the contractual customer of Worley Canada Services Ltd. and Worley Canada Services Ltd. assumes no liability to any other party for any representations contained in this drawing.					



### 1.3. Project Name

Resolute Bay Community Harbour Project (hereafter referred to as the Project).

### 1.4. Proponent and Representative Details

Contact information for the proponent and representative are provided in Table 1-1.

**Table 1-1: Proponent and Contact Information**

Contact Category	Details
<b>Proponent: Government of Nunavut</b>	
Applicant's Name	Justin McDonell Project Manager, Capital Projects
Address	PO Box 1000 Station 200 Community and Government Services Iqaluit, Nunavut X0A 0H0
Telephone / Fax	1-867-975-5114
Email	<a href="mailto:JMcDonell@gov.nu.ca">JMcDonell@gov.nu.ca</a>
<b>Applicant Representative: Dynamic Ocean Consulting Ltd.</b>	
Name	Victoria Burdett-Coutts, MSc, RPBio Senior Marine Scientist and Regulatory Professional
Address	2901 Murray Street Port Moody, British Columbia V3H 1X3
Telephone / Fax	1-778-839-2372
Email	<a href="mailto:Victoria@dynamicocean.ca">Victoria@dynamicocean.ca</a>
<b>Design Engineer: Worley Canada Services Ltd.</b>	
Name	Chris Meisl Project Manager, Marine Engineering Lead
Address	Suite 200, 2930 Virtual Way Vancouver, British Columbia V5M 0A5
Telephone / Fax	1-418-730-2965
Email	<a href="mailto:Chris.Meisl@worley.com">Chris.Meisl@worley.com</a>

## **2. Project Description**

### **2.1. Project Scope**

The scope of the Project addresses all construction components of the Community Harbour in Resolute Bay.

### **2.2. Project Purpose and Need**

The Project is designed to serve existing small boat users, such as hunters, fishers, outfitters, and recreational users, with the objective of improving access and safety for existing and future users. The community of Resolute Bay may also allow the facility to be used by other industries such as cruise ship tenders. The construction of a community harbour in Resolute Bay is being proposed to support safe access to the land and sea in the context of rapid environmental changes in the Arctic and in support of community fish and marine mammal harvesting.

The objective of the Project is to improve access and safety for existing and future users. It is acknowledged that the community will continue to grow, likely resulting in increased boaters and vessel traffic to Resolute Bay.

The new breakwater will provide protection from winds and waves, which was a safety concern expressed during consultation with the community. The new boat launch will provide all tide access and ample manoeuvring space on shore. The Project will also improve day-to-day operations and safety for users by providing a laydown area adjacent to the shoreline. This will allow ample space for parking and provisioning. Further amenities of the design include an improved shoreline (grading and levelling to create a driving surface) and lighting, including navigation lights at the harbour entrance.

### **2.3. Study Areas**

The Project Study Area includes the footprint of the Project components plus a 100m buffer.

### **2.4. Project Components**

The Project components include temporary and permanent components, which are marine and terrestrial. Temporary components are terrestrial and include a quarry and haul road; the quarry to supply rock for construction, and a haul road to transport rock from the quarry to the community harbour. The permanent component is the community harbour and is primarily marine with small portions that are terrestrial (Figure 1-1 (community harbour location and components); Drawing 2-1 (general arrangement of community harbour)).

The permanent components of the Project include the construction of:

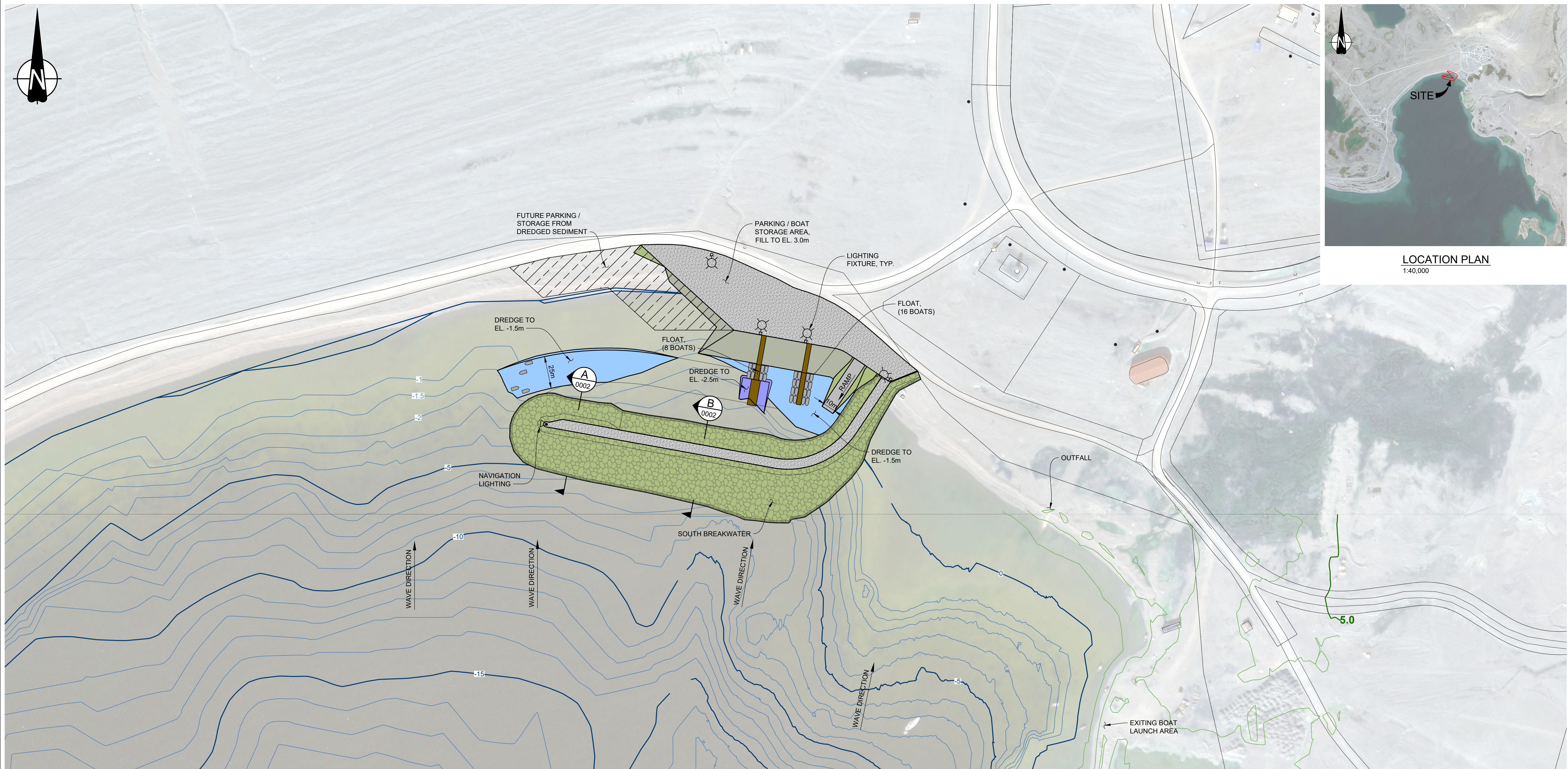
- A new breakwater (to create a protected harbour).
- Boat launch ramp.
- Small craft floating docks to support mooring of small craft vessels.



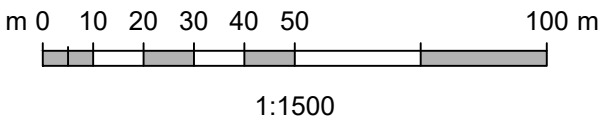
- Laydown area.
- Navigational aids.
- Harbour lighting.

The final arrangement of the community harbour may change through the design development phase of the Project as GN-CGS/EDT plans to continue consulting with the community to refine the Project design; however, any design modifications that do occur, are not expected to change the predicted environmental effects discussed in this PSIR. Temporary components to support construction include a quarry and haul road, with the quarry required to supply rock for construction, and a haul road to transport rock from the quarry to the community harbour. Project components are further described in Section 2.1.1 of the PSIR Report (Dynamic Ocean & Worley Consulting, 2025b).





PLAN  
1:1500



- NOTES:
- WATER DEPTHS PROVIDED BY CANADIAN HYDROGRAPHIC SERVICE, DEPARTMENT OF FISHERIES AND OCEANS IN A "LAS" FILE.

--	--	--	--	--	--	--	--	--	--	--	--	--	--	--	--	--	--	--	--	--	--	--	--	--	--	--	--	--	--	--	--	--	--	--	--	--	--	--	--	--	--	--	--	--	--	--	--	--	--	--	--	--	--	--	--	--	--	--	--	--	--	--	--	--	--	--	--	--	--	--	--	--	--	--	--	--	--	--	--	--	--	--	--	--	--	--	--	--	--	--	--	--	--	--	--	--	--	--	--	--	--	--	--	--	--	--	--	--	--	--	--	--	--	--	--	--	--	--	--	--	--	--	--	--	--	--	--	--	--	--	--	--	--	--	--	--	--	--	--	--	--	--	--	--	--	--	--	--	--	--	--	--	--	--	--	--	--	--	--	--	--	--	--	--	--	--	--	--	--	--	--	--	--	--	--	--	--	--	--	--	--	--	--	--	--	--	--	--	--	--	--	--	--	--	--	--	--	--	--	--	--	--	--	--	--	--	--	--	--	--	--	--	--	--	--	--	--	--	--	--	--	--	--	--	--	--	--	--	--	--	--	--	--	--	--	--	--	--	--	--	--	--	--	--	--	--	--	--	--	--	--	--	--	--	--	--	--	--	--	--	--	--	--	--	--	--	--	--	--	--	--	--	--	--	--	--	--	--	--	--	--	--	--	--	--	--	--	--	--	--	--	--	--	--	--	--	--	--	--	--	--	--	--	--	--	--	--	--	--	--	--	--	--	--	--	--	--	--	--	--	--	--	--	--	--	--	--	--	--	--	--	--	--	--	--	--	--	--	--	--	--	--	--	--	--	--	--	--	--	--	--	--	--	--	--	--	--	--	--	--	--	--	--	--	--	--	--	--	--	--	--	--	--	--	--	--	--	--	--	--	--	--	--	--	--	--	--	--	--	--	--	--	--	--	--	--	--	--	--	--	--	--	--	--	--	--	--	--	--	--	--	--	--	--	--	--	--	--	--	--	--	--	--	--	--	--	--	--	--	--	--	--	--	--	--	--	--	--	--	--	--	--	--	--	--	--	--	--	--	--	--	--	--	--	--	--	--	--	--	--	--	--	--	--	--	--	--	--	--	--	--	--	--	--	--	--	--	--	--	--	--	--	--	--	--	--	--	--	--	--	--	--	--	--	--	--	--	--	--	--	--	--	--	--	--	--	--	--	--	--	--	--	--	--	--	--	--	--	--	--	--	--	--	--	--	--	--	--	--	--	--	--	--	--	--	--	--	--	--	--	--	--	--	--	--	--	--	--	--	--	--	--	--	--	--	--	--	--	--	--	--	--	--	--	--	--	--	--	--	--	--	--	--	--	--	--	--	--	--	--	--	--	--	--	--	--	--	--	--	--	--	--	--	--	--	--	--	--	--	--	--	--	--	--	--	--	--	--	--	--	--	--	--	--	--	--	--	--	--	--	--	--	--	--	--	--	--	--	--	--	--	--	--	--	--	--	--	--	--	--	--	--	--	--	--	--	--	--	--	--	--	--	--	--	--	--	--	--	--	--	--	--	--	--	--	--	--	--	--	--	--	--	--	--	--	--	--	--	--	--	--	--	--	--	--	--	--	--	--	--	--	--	--	--	--	--	--	--	--	--	--	--	--	--	--	--	--	--	--	--	--	--	--	--	--	--	--	--	--	--	--	--	--	--	--	--	--	--	--	--	--	--	--	--	--	--	--	--	--	--	--	--	--	--	--	--	--	--	--	--	--	--	--	--	--	--	--	--	--	--	--	--	--	--	--	--	--	--	--	--	--	--	--	--	--	--	--	--	--	--	--	--	--	--	--	--	--	--	--	--	--	--	--	--	--	--	--	--	--	--	--	--	--	--	--	--	--	--	--	--	--	--	--	--	--	--	--	--	--	--	--	--	--	--	--	--	--	--	--	--	--	--	--	--	--	--	--	--	--	--	--	--	--	--	--	--	--	--	--	--	--	--	--	--	--	--	--	--	--	--	--	--	--	--	--	--	--	--	--	--	--	--	--	--	--	--	--	--	--	--	--	--	--	--	--	--	--	--	--	--	--	--	--	--	--	--	--	--	--	--	--	--	--	--	--	--	--	--	--	--	--	--	--	--	--	--	--	--	--	--	--	--	--	--	--	--	--	--	--	--	--	--	--	--	--	--	--	--	--	--	--	--	--	--	--	--	--	--	--	--	--	--	--	--	--	--	--	--	--	--	--	--	--	--	--	--	--	--	--	--	--	--	--	--	--	--	--	--	--	--	--	--	--	--	--	--	--	--	--	--	--	--	--	--	--	--	--	--	--	--	--	--	--	--	--	--	--	--	--	--	--	--	--	--	--	--	--	--	--	--	--	--	--	--	--	--	--	--	--	--	--	--	--	--	--	--	--	--	--	--	--	--	--	--	--	--	--	--	--	--	--	--	--	--	--	--	--	--	--	--	--	--	--	--	--	--	--	--	--	--	--	--	--	--	--	--	--	--	--	--	--	--	--	--	--	--	--	--	--	--	--	--	--	--	--	--	--	--	--	--	--	--	--	--	--	--	--	--	--	--	--	--	--	--	--	--	--	--	--	--	--	--	--	--	--	--	--	--	--	--	--	--	--	--	--	--	--	--	--	--	--	--	--	--	--	--	--	--	--	--	--	--	--	--	--	--	--	--	--	--	--	--	--	--	--	--	--	--	--	--	--	--	--	--	--	--	--	--	--	--	--	--	--	--	--	--	--	--	--	--	--	--	--	--	--	--	--	--	--	--	--	--	--	--	--	--	--	--	--	--	--	--	--	--	--	--	--	--	--	--	--	--	--	--	--	--	--	--	--	--	--	--	--	--	--	--	--	--	--	--	--	--	--	--	--	--	--	--	--	--	--	--	--	--	--	--	--	--	--	--	--	--	--	--	--	--	--	--	--	--	--	--	--	--	--	--	--	--	--	--	--	--	--	--	--	--	--	--	--	--	--	--	--	--	--	--	--	--	--	--	--	--	--	--	--	--	--	--	--	--	--	--	--	--	--	--	--	--	--	--	--	--	--	--	--	--	--	--	--	--	--	--	--	--	--	--	--	--	--	--	--	--	--	--	--	--	--	--	--	--	--	--	--	--	--	--	--	--	--	--	--	--	--	--	--	--	--	--	--	--	--	--	--	--	--	--	--	--	--	--	--	--	--	--	--	--	--	--	--	--	--	--	--	--	--	--	--	--	--	--	--	--	--	--	--	--	--	--	--	--	--	--	--	--	--	--	--	--	--	--	--	--	--	--	--	--	--	--	--	--	--	--	--	--	--	--	--	--	--	--	--	--	--	--	--	--	--	--	--	--	--	--	--	--	--	--	--	--	--	--	--	--	--	--	--	--	--	--	--	--	--	--	--	--	--	--	--	--	--	--	--	--	--	--	--	--	--	--	--	--	--	--	--	--	--	--	--	--	--	--	--	--



## 2.5. Project Information

Project information requirements to support the screening by the Nunavut Impact Review Board (NIRB) are detailed in the Project Specific Information Requirement (PSIR) Report (Dynamic Ocean & Worley Consulting, 2025b), and summarized in Table 2-1.

**Table 2-1: Nunavut Impact Review Board Project Information Requirements**

Project Details	Summary	PSIR Report Section
Schedule	<ul style="list-style-type: none"> <li>Construction is scheduled to begin in 2026 and will conclude in 2029, with works largely occurring in the open-water season. The Project is expected to be operational in the open-water season of 2030.</li> </ul>	Section 1.12, Table 1-2
Workforce and Human Resources	<ul style="list-style-type: none"> <li>A crew of approximately 30 is anticipated to be at the Project site during construction. With construction occurring during the open-water season, there will be approximately 125 construction days per year for a total of 500 days over 4 years.</li> </ul>	Section 1.18, Table 1-7
Consultation	<ul style="list-style-type: none"> <li>Consultations have been conducted since the feasibility phase of the Project and are designed to ensure that residents, hunters, fishers, and stakeholders are consulted using a variety of methods and materials. To date, seven separate community visits from 2018 to 2024 have been conducted including meetings with the Hamlet, design workshops with the HTA, and Inuit knowledge (Inuit Qaujimajatuqangit [IQ]) workshops with elders and active hunters. Additionally, open houses were conducted in May 2022 and December 2024 to provide all residents with a chance to learn about the community harbour concepts and construction plans and provide their feedback. Community notices were posted in the community, on the radio, and on Facebook 10 days prior to the open houses and again on the day of the public meetings. Presentation slides were projected and large-scale posters of the harbour layouts, quarry locations, haul routes, permitting processes, and photos depicting harbour equipment and construction activities were displayed.</li> </ul>	Section 3, Table 3-1, Table 3-2

Project Details	Summary		PSIR Report Section
Proposed use of Local and Inuit Knowledge (Inuit Qaujimajatuqangit – IQ)	<ul style="list-style-type: none"> <li>Traditional land use and environmental knowledge workshops and interviews with local knowledge holders will guide and complement the overall field baseline study, detailed design and construction planning for the Project.</li> </ul>		Section 4, Figure 4-1
Land Use and Licensing	<b>Administrative Boundary</b>	Qikiqtaaluk Region	Sections 1.7, 5, Table 5-1
	<b>Planning Region</b>	North Baffin	
	<b>Land Use</b>	Construction of marine infrastructure which by NPC's descriptions would be most closely categorized as permanent structures	
	<b>Land Ownership</b>	Crown	
Equipment	<ul style="list-style-type: none"> <li>Construction is expected to be completed using land-based equipment; however, the contractor may decide to support with marine-based equipment. Equipment will arrive in Resolute Bay by sealift.</li> </ul>		Section 1.16.1, Table 1-4
Fuel Use	<ul style="list-style-type: none"> <li>Based on recent conversations with the GN-PPD and the Hamlet, the community's current fuel storage capacity and/or fuel resupply schedule is likely insufficient to support the Project's construction fuel needs. The Project is engaging with GN-PPD to confirm if the Project's estimated fuel consumption can be met without impacting the communities fuel requirements. Initial assessments of current capacity and fuel surpluses indicate that there will likely be insufficient fuel to support the construction works.</li> </ul>		Sections 1.16.2, 8.3.4, Table 1-5
Chemicals and Hazardous Materials	<ul style="list-style-type: none"> <li>Anticipated chemical or hazardous materials required for the community harbour construction have been estimated based on equipment and material types anticipated to be required by the contractor.</li> </ul>		Section 1.16.3, Table 1-6



Project Details	Summary	PSIR Report Section
Water Use	<ul style="list-style-type: none"> <li>Water for construction use will be obtained from the existing water supply infrastructure in Resolute Bay. It is anticipated that water will be delivered by a local contracted water truck, or the contractor's own water truck. If the local water supply is unable to meet the water needs of the community, the contractor will be responsible for the appropriate permitting from the Nunavut Water Board (NWB).</li> </ul>	Section 1.14
Waste Management	<ul style="list-style-type: none"> <li>Wastewater management estimated volumes consider the construction sites and the construction camp.</li> </ul>	Section 1.15, Table 1-3
Potential Environmental and Social Impacts and implementation of mitigation measures.	<ul style="list-style-type: none"> <li>Valued Ecosystem Component and Valued Socio-Economic Components were determined from collaboration with the community and key stakeholders, while being guided by NIRB's Proponent Guidance document (NIRB, 2020). Assessment of the potential environmental and socio-economic effects of the Project include the anticipated impacts on VECs and VSECs of residents and community harbour users.</li> <li>A Construction Environmental Management Plan (CEMP) has been developed to support permitting and to confirm mitigation and monitoring measures that will be incorporated during construction to minimize negative effects to socio-economic and environmental factors (Dynamic Ocean &amp; Worley Consulting, 2025a). The Contractor will be required to generate their own CEMP (CCEMP), which at a minimum meets the commitments made in the permitting CEMP and outline how all monitoring commitments will be met.</li> <li>In addition to the CEMP, the CWP's provide specific task execution methodologies and outline situational plans to confirm the forethought of construction. Detail on the CWP's can be found in Section 8.3 of the PSIR Report (Dynamic Ocean &amp; Worley Consulting, 2025b). CWP's required for the Project prior to construction will include but may not be limited to the following:</li> </ul>	Section 7, Tables 7-1, 7.2



Project Details	Summary	PSIR Report Section
	<ul style="list-style-type: none"> <li>• Contractor Marine Safety Plan (CMSP): Outlines how to minimize the impacts of water works.</li> <li>• Contractor Traffic Management Plan (CTMP): Outlines procedures and protocols for site access, traffic routing and management.</li> <li>• Contractor Spill Prevention and Response Plan (CSPRP): outlines measures to be followed in the event of accidental spills, and how safe fueling and fuel storage practices will be followed.</li> <li>• Contractor Quarry and Blasting Management Plan (CQBMP): Outlines manage measures necessary for aggregate production.</li> <li>• Contractor Health and Safety and Emergency Response Plan (CMSERP): Outlines a plan to protect the workers, community and environment.</li> </ul>	



## References

- Dynamic Ocean, & Worley Consulting. (2025a). Resolute Bay Community Harbour: Construction Environmental Management Plan. Prepared for the Government of Nunavut. Doc No: PLN-WRL-07-Resolute Bay Community HRB CEMP-0001. 26 March 2025. Rev4.
- Dynamic Ocean, & Worley Consulting. (2025b). Resolute Bay Community Harbour: Project Specific Information Requirements. Prepared for Nunavut Impact Review Board. Doc No: REP-WRL-08-Resolute Bay Community HRB PSIR-0003. 26 March 2025. Rev7.
- GN. (2024). Internal Memo: Transitional Notices for Procurement Documents for the 2025 Government Reorganization. Issued 03 December. Accessed: January 2025.
- IIBA. (2019). Tallurutiup Imanga National Marine Conservation Area. Inuit Impact and Benefit Agreement. August 1, 2019. Available at: [https://www.qia.ca/wp-content/uploads/2019/09/2019-08-01\\_TINMCA-IIBA\\_FULLY-SIGNED-1.pdf](https://www.qia.ca/wp-content/uploads/2019/09/2019-08-01_TINMCA-IIBA_FULLY-SIGNED-1.pdf) Accessed: November 2024.
- NIRB. (2020). Proponent's Guide. NIRB Technical Guide Series. Updated February 2020. Available at: <https://www.nirb.ca/publications/guides/NIRB%20Proponents%20Guide.pdf>. Accessed: October 2024.
- NPC. (2000). North Baffin Regional Land Use Plan. Available at: <https://www.nunavut.ca/land-use-plans/north-baffin-region-land-use-plan>. Accessed: November 2024.
- NPC. (2023). Recommended Nunavut Land Use Plan (RNLUP). Available at: [https://www.nunavut.ca/sites/default/files/23-001e-2023-06-20-recommended\\_nunavut\\_land\\_use\\_plan-eng\\_r.pdf](https://www.nunavut.ca/sites/default/files/23-001e-2023-06-20-recommended_nunavut_land_use_plan-eng_r.pdf). Accessed: November 2024. 136p.